

Data Path : Z:\pestpcbsrv\HPCHEM1\ECD_S\Data\PS022019\
 Data File : PS003281.D
 Signal(s) : Signal #1: ECD1A.ch Signal #2: ECD2B.ch
 Acq On : 20 Feb 2019 16:15
 Operator : EI\SJ
 Sample : K1510-01
 Misc :
 ALS Vial : 5 Sample Multiplier: 1

Instrument :
 ECD_S
 ClientSampleId :
 FK-GF-02-030-A

Integration File signal 1: autoint1.e
 Integration File signal 2: autoint2.e
 Quant Time: Feb 20 21:56:57 2019
 Quant Method : Z:\pestpcbsrv\HPCHEM1\ECD_S\Method\PS012819.M
 Quant Title : 8080.M
 QLast Update : Tue Jan 29 06:11:45 2019
 Response via : Initial Calibration
 Integrator: ChemStation

Volume Inj. : 2 µl
 Signal #1 Phase : Rtx-CLPesticides Signal #2 Phase: Rtx-CLPesticides2
 Signal #1 Info : 30M x 0.32mm x0.5 Signal #2 Info : 30M x 0.32mm x 0.25µm

Compound	RT#1	RT#2	Resp#1	Resp#2	ng/ml	ng/ml
----------	------	------	--------	--------	-------	-------

System Monitoring Compounds

4) S	2,4-DCAA	11.297	10.797	154.3E6	147.9E6	406.529	345.879
------	----------	--------	--------	---------	---------	---------	---------

Target Compounds

6) T	MCPP	11.965	11.315	41673810	2525807	34.783	2.290 #
10) T	Pentachlo...	13.520	13.209	41201123	37044278	6.425	5.994
13) T	2,4-DB	15.556	0.000	2398676	0	9.175	N.D. #
14) T	DINOSEB	0.000	15.520	0	7619503	N.D.	4.347 #
15) T	Picloram	0.000	16.724	0	23899185	N.D.	7.949 #
16) T	DCPA	17.437	16.724	-4723871	23899185	N.D.	7.715

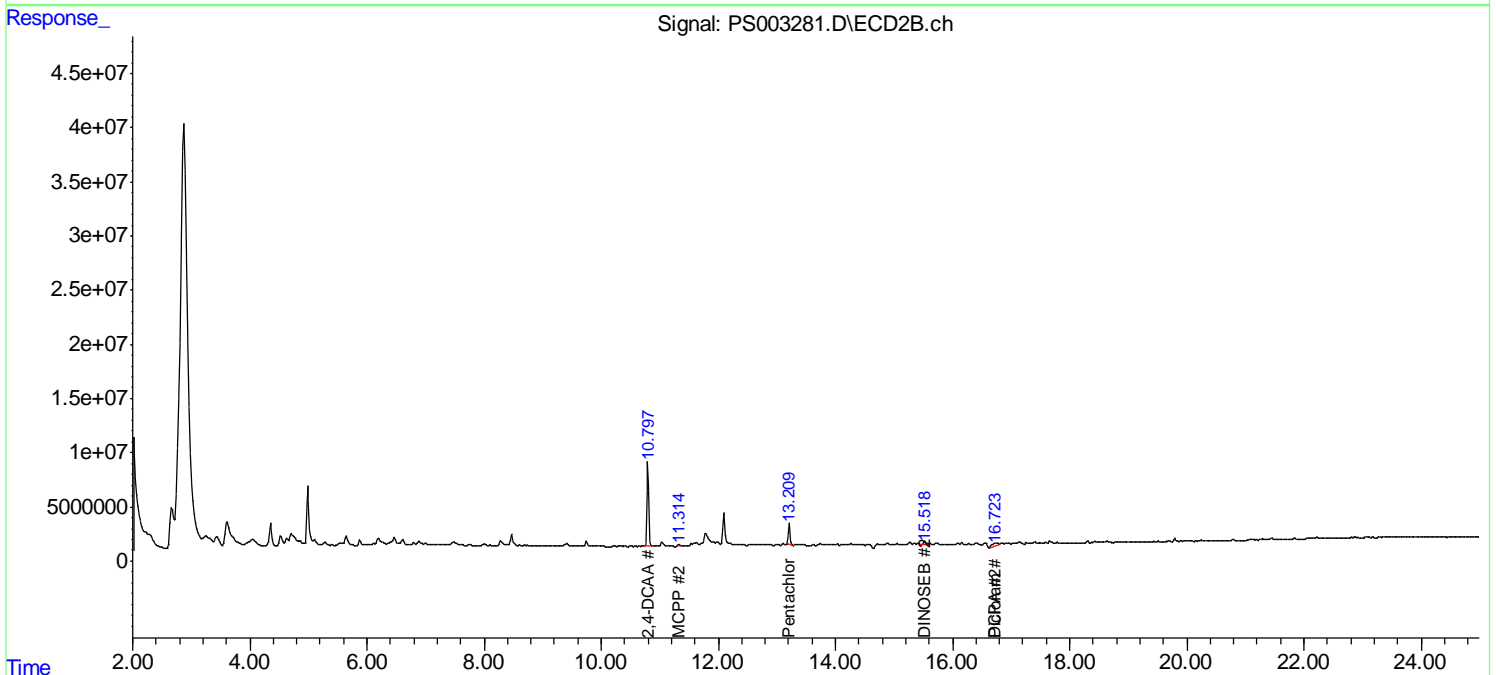
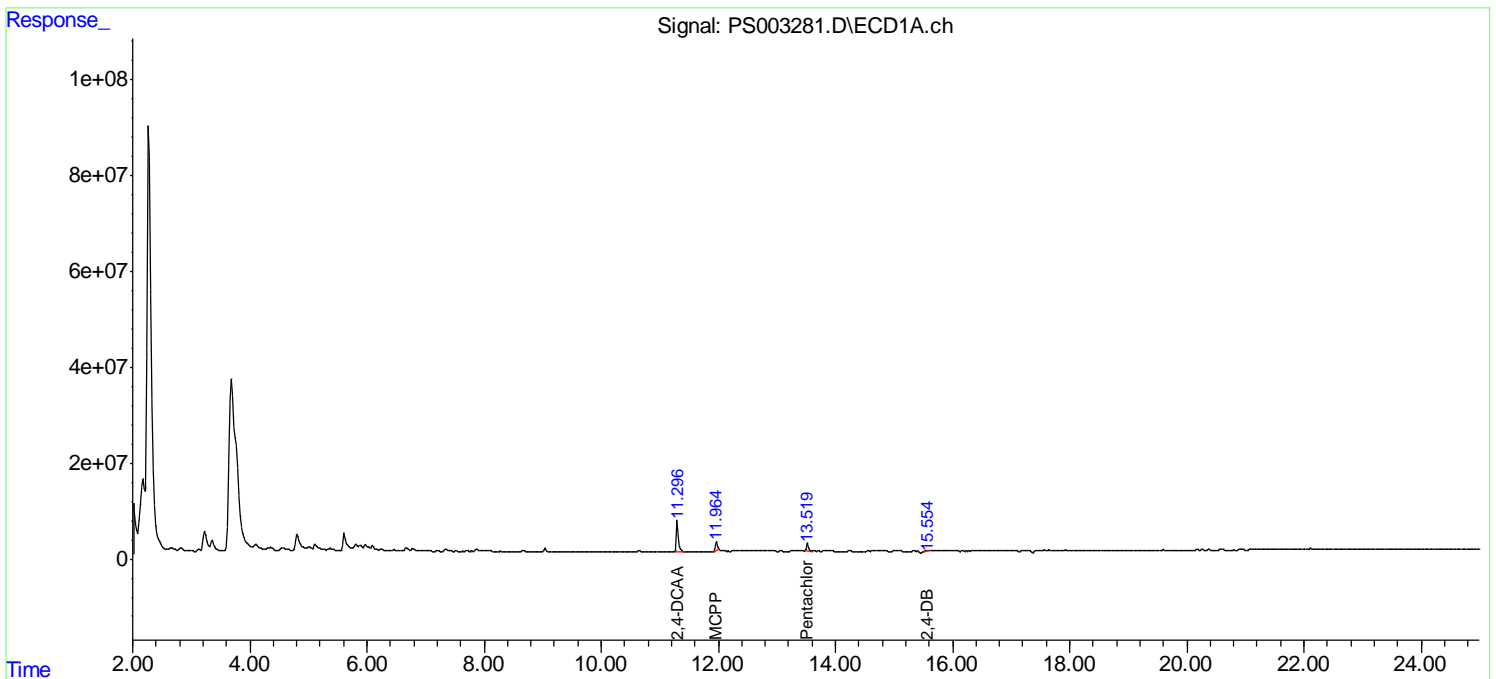
(f)=RT Delta > 1/2 Window (#)=Amounts differ by > 25% (m)=manual int.

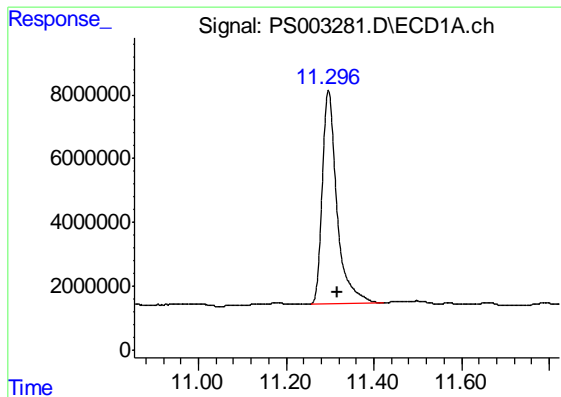
Data Path : Z:\pestpcbsrv\HPCHEM1\ECD_S\Data\PS022019\
 Data File : PS003281.D
 Signal(s) : Signal #1: ECD1A.ch Signal #2: ECD2B.ch
 Acq On : 20 Feb 2019 16:15
 Operator : EI\SJ
 Sample : K1510-01
 Misc :
 ALS Vial : 5 Sample Multiplier: 1

Instrument :
 ECD_S
 ClientSampleId :
 FK-GF-02-030-A

Integration File signal 1: autoint1.e
 Integration File signal 2: autoint2.e
 Quant Time: Feb 20 21:56:57 2019
 Quant Method : Z:\pestpcbsrv\HPCHEM1\ECD_S\Method\PS012819.M
 Quant Title : 8080.M
 QLast Update : Tue Jan 29 06:11:45 2019
 Response via : Initial Calibration
 Integrator: ChemStation

Volume Inj. : 2 µl
 Signal #1 Phase : Rtx-CLPesticides Signal #2 Phase: Rtx-CLPesticides2
 Signal #1 Info : 30M x 0.32mm x0.5 Signal #2 Info : 30M x 0.32mm x 0.25µm

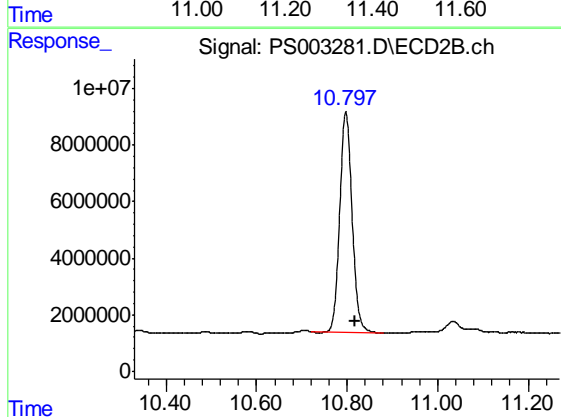




#4 2,4-DCAA

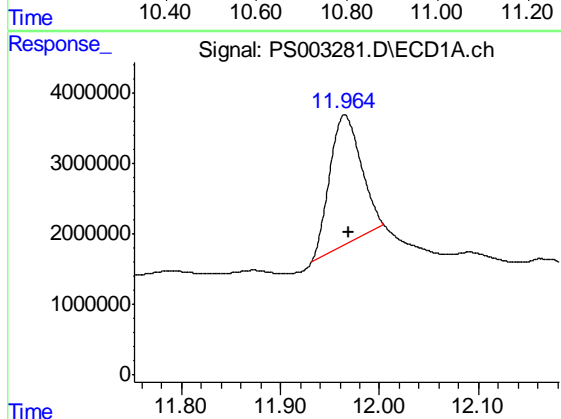
R.T.: 11.297 min
 Delta R.T.: -0.021 min
 Response: 154335010
 Conc: 406.53 ng/ml

Instrument :
 ECD_S
 ClientSampleId :
 FK-GF-02-030-A



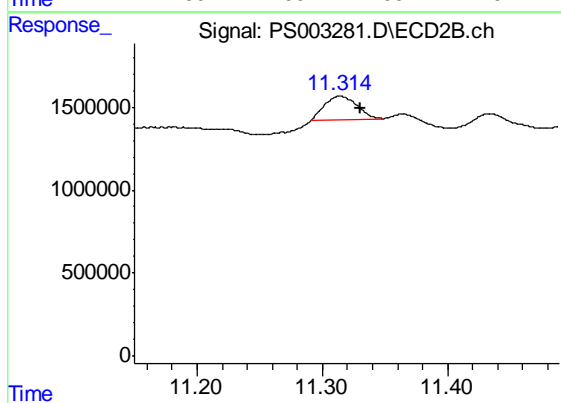
#4 2,4-DCAA

R.T.: 10.797 min
 Delta R.T.: -0.020 min
 Response: 147879282
 Conc: 345.88 ng/ml



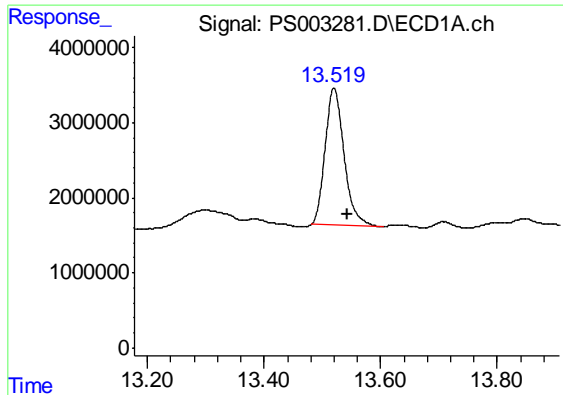
#6 MCPP

R.T.: 11.965 min
 Delta R.T.: -0.004 min
 Response: 41673810
 Conc: 34.78 ug/ml



#6 MCPP

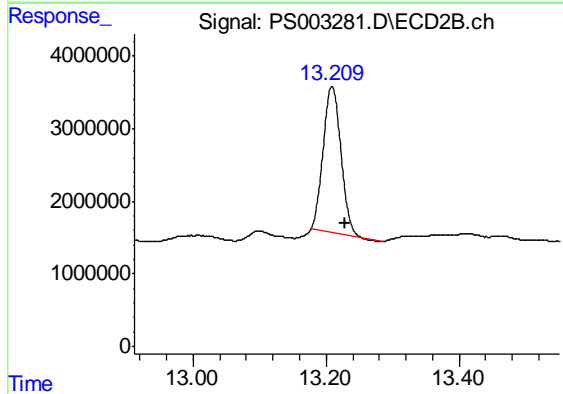
R.T.: 11.315 min
 Delta R.T.: -0.016 min
 Response: 2525807
 Conc: 2.29 ug/ml



#10 Pentachlorophenol

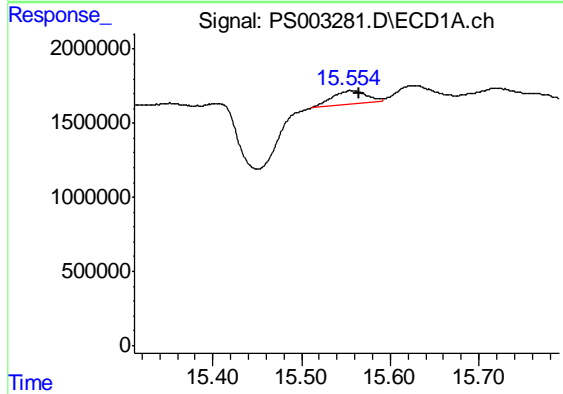
R.T.: 13.520 min
 Delta R.T.: -0.023 min
 Response: 41201123
 Conc: 6.42 ng/ml

Instrument :
 ECD_S
 ClientSampleId :
 FK-GF-02-030-A



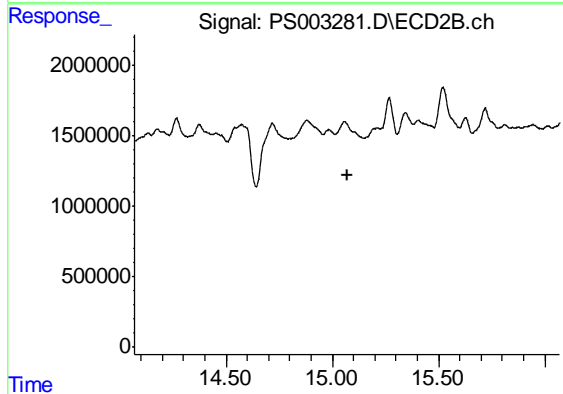
#10 Pentachlorophenol

R.T.: 13.209 min
 Delta R.T.: -0.021 min
 Response: 37044278
 Conc: 5.99 ng/ml



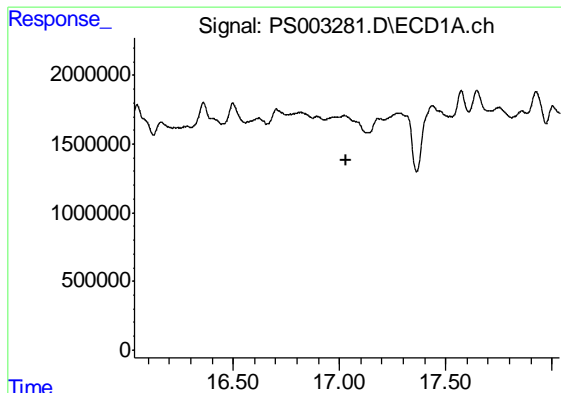
#13 2,4-DB

R.T.: 15.556 min
 Delta R.T.: -0.009 min
 Response: 2398676
 Conc: 9.18 ng/ml



#13 2,4-DB

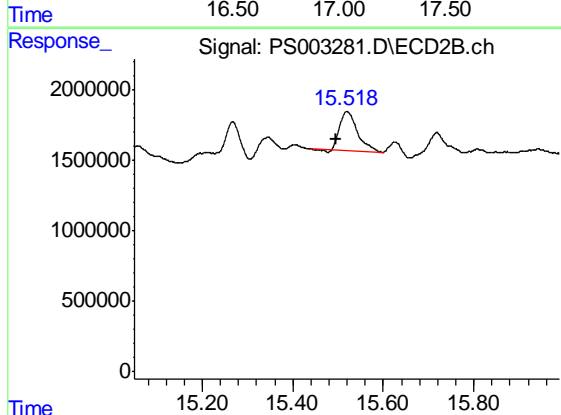
R.T.: 0.000 min
 Exp R.T. : 15.069 min
 Response: 0
 Conc: N.D.



#14 DINOSEB

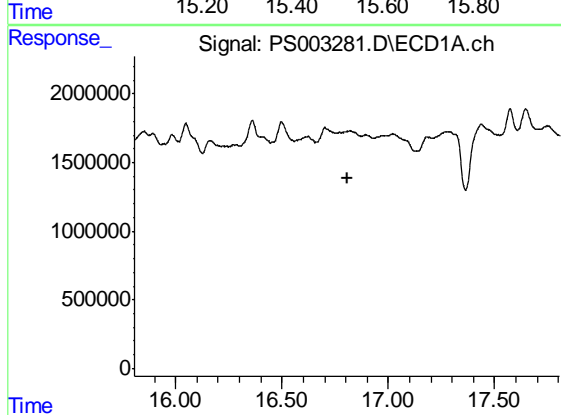
R.T.: 0.000 min
 Exp R.T. : 17.035 min
 Response: 0
 Conc: N.D.

Instrument :
 ECD_S
 ClientSampleId :
 FK-GF-02-030-A



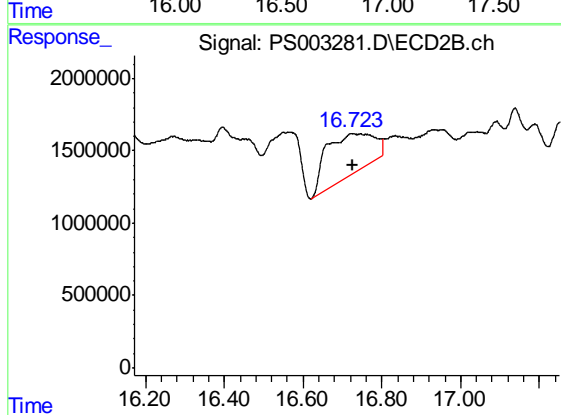
#14 DINOSEB

R.T.: 15.520 min
 Delta R.T.: 0.025 min
 Response: 7619503
 Conc: 4.35 ng/ml



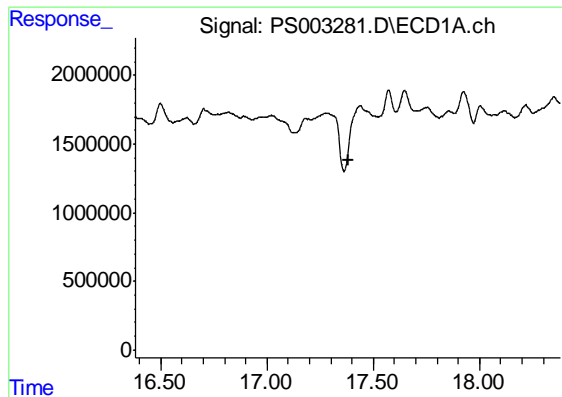
#15 Picloram

R.T.: 0.000 min
 Exp R.T. : 16.806 min
 Response: 0
 Conc: N.D.



#15 Picloram

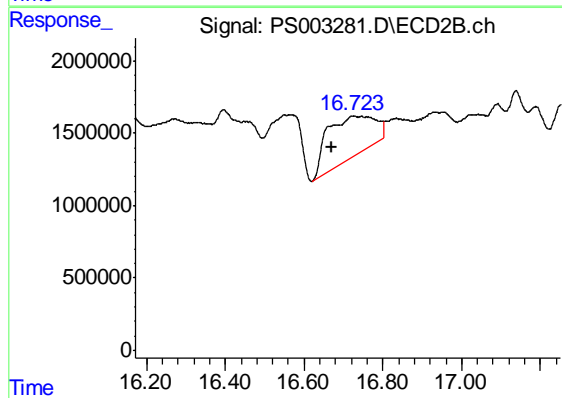
R.T.: 16.724 min
 Delta R.T.: 0.000 min
 Response: 23899185
 Conc: 7.95 ng/ml



#16 DCPA

R.T.: 17.437 min
Delta R.T.: 0.056 min
Response: -4723871
Conc: N.D.

Instrument :
ECD_S
ClientSampleId :
FK-GF-02-030-A



#16 DCPA

R.T.: 16.724 min
Delta R.T.: 0.054 min
Response: 23899185
Conc: 7.72 ng/ml