

Data Path : Z:\pestpcbsrv\HPCHEM1\ECD_S\Data\PS022119\
 Data File : PS003299.D
 Signal(s) : Signal #1: ECD1A.ch Signal #2: ECD2B.ch
 Acq On : 21 Feb 2019 20:43
 Operator : EI\SJ
 Sample : K1344098
 Misc :
 ALS Vial : 10 Sample Multiplier: 1

Instrument :
 ECD_S
 ClientSampleId :
 NB-07-022019-B

Integration File signal 1: autoint1.e
 Integration File signal 2: autoint2.e
 Quant Time: Feb 21 23:59:46 2019
 Quant Method : Z:\pestpcbsrv\HPCHEM1\ECD_S\Method\PS012819.M
 Quant Title : 8080.M
 QLast Update : Tue Jan 29 06:11:45 2019
 Response via : Initial Calibration
 Integrator: ChemStation

Volume Inj. : 2 µl
 Signal #1 Phase : Rtx-CLPesticides Signal #2 Phase: Rtx-CLPesticides2
 Signal #1 Info : 30M x 0.32mm x0.5 Signal #2 Info : 30M x 0.32mm x 0.25µm

Compound	RT#1	RT#2	Resp#1	Resp#2	ng/ml	ng/ml

System Monitoring Compounds						
4) S 2,4-DCAA	11.285	10.784	102.9E6	129.5E6	271.019	302.992
Target Compounds						
1) T Dalapon	0.000	2.284	0	14236255	N.D.	26.564 #
2) T 3,5-DICHL...	0.000	9.033	0	1671358	N.D.	2.966 #
5) T DICAMBA	11.689	0.000	2004065	0	1.250	N.D. #
6) T MCPP	11.975	0.000	6911387	0	5.769	N.D. #

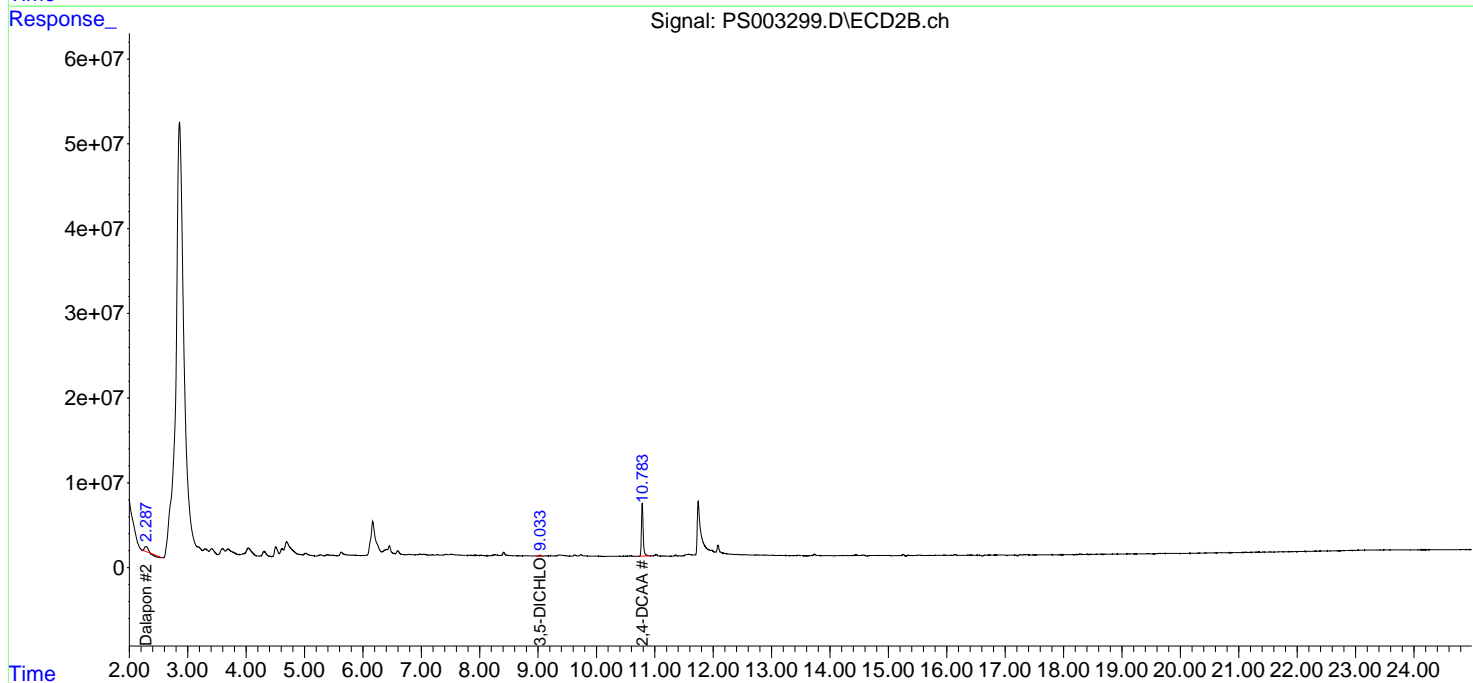
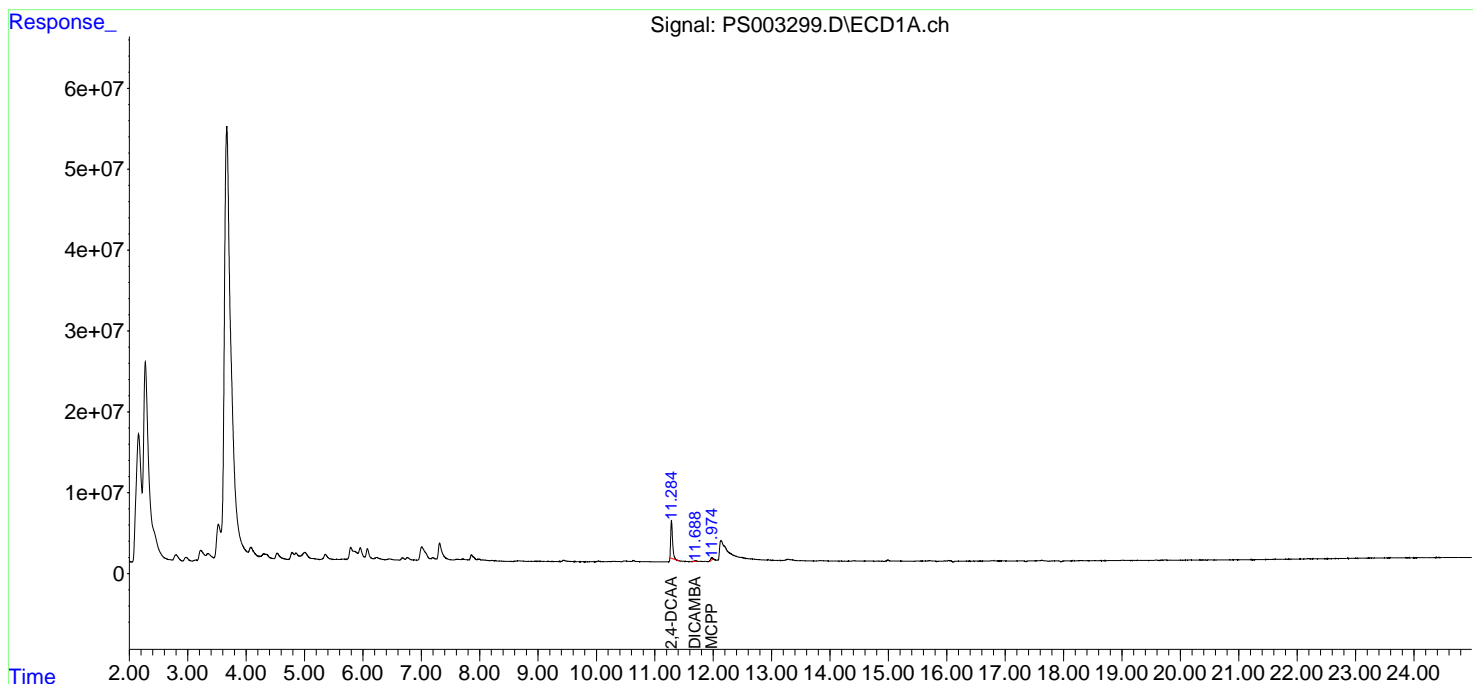
(f)=RT Delta > 1/2 Window (#)=Amounts differ by > 25% (m)=manual int.

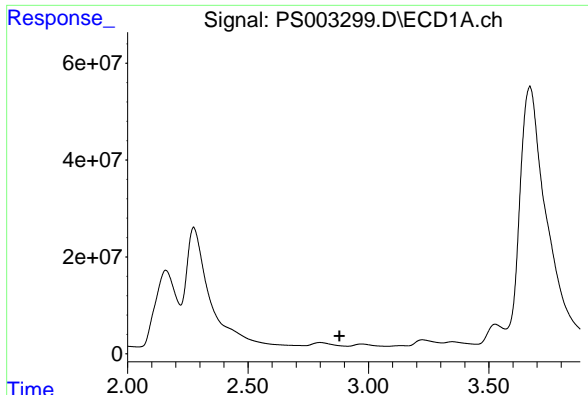
Data Path : Z:\pestpcbsrv\HPCHEM1\ECD_S\Data\PS022119\
 Data File : PS003299.D
 Signal(s) : Signal #1: ECD1A.ch Signal #2: ECD2B.ch
 Acq On : 21 Feb 2019 20:43
 Operator : EI\SJ
 Sample : K1344098
 Misc :
 ALS Vial : 10 Sample Multiplier: 1

Instrument :
 ECD_S
 ClientSampleID :
 NB-07-022019-B

Integration File signal 1: autoint1.e
 Integration File signal 2: autoint2.e
 Quant Time: Feb 21 23:59:46 2019
 Quant Method : Z:\pestpcbsrv\HPCHEM1\ECD_S\Method\PS012819.M
 Quant Title : 8080.M
 QLast Update : Tue Jan 29 06:11:45 2019
 Response via : Initial Calibration
 Integrator: ChemStation

Volume Inj. : 2 µl
 Signal #1 Phase : Rtx-CLPesticides Signal #2 Phase: Rtx-CLPesticides2
 Signal #1 Info : 30M x 0.32mm x 0.5 Signal #2 Info : 30M x 0.32mm x 0.25µm

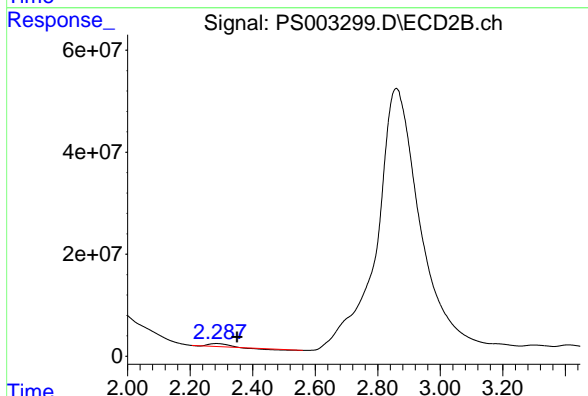




#1 Dalapon

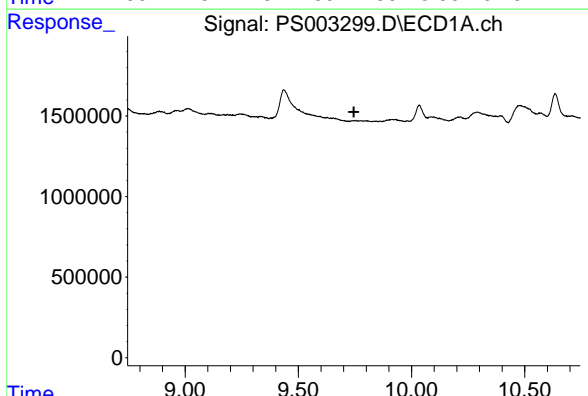
R.T.: 0.000 min
 Exp R.T.: 2.880 min
 Response: 0
 Conc: N.D.

Instrument :
 ECD_S
 ClientSampleId :
 NB-07-022019-B



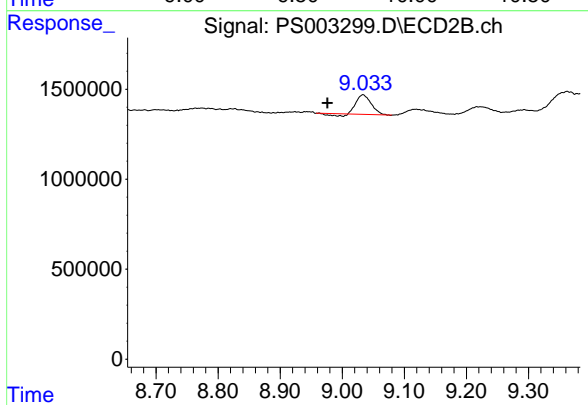
#1 Dalapon

R.T.: 2.284 min
 Delta R.T.: -0.066 min
 Response: 14236255
 Conc: 26.56 ng/ml



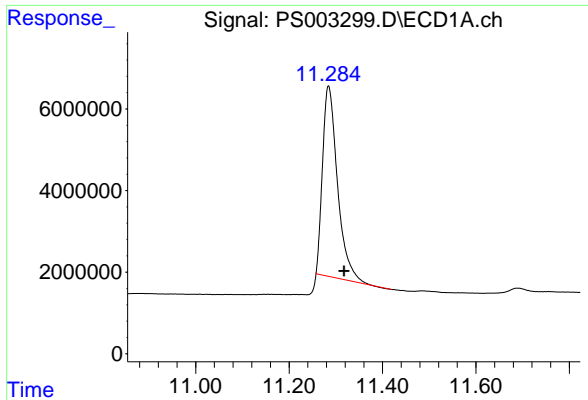
#2 3,5-DICHLOROBENZOIC ACID

R.T.: 0.000 min
 Exp R.T.: 9.745 min
 Response: 0
 Conc: N.D.



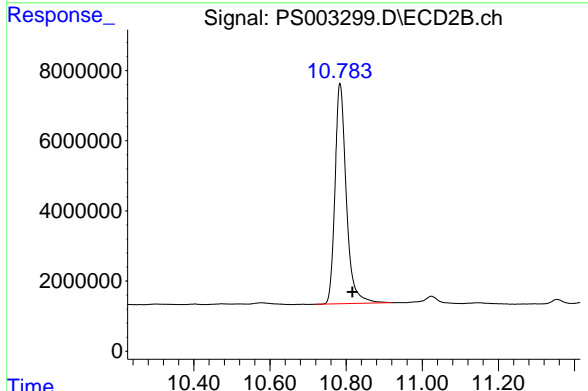
#2 3,5-DICHLOROBENZOIC ACID

R.T.: 9.033 min
 Delta R.T.: 0.057 min
 Response: 1671358
 Conc: 2.97 ng/ml

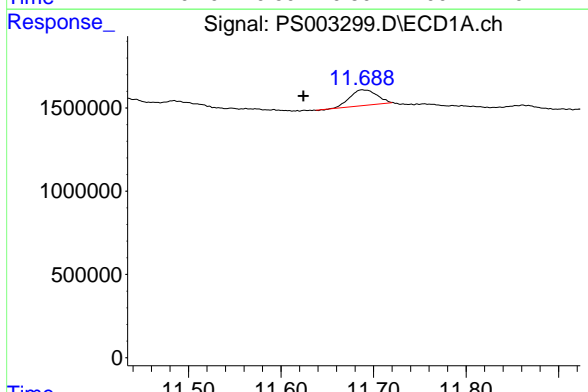


#4 2,4-DCAA
 R.T.: 11.285 min
 Delta R.T.: -0.033 min
 Response: 102889797
 Conc: 271.02 ng/ml

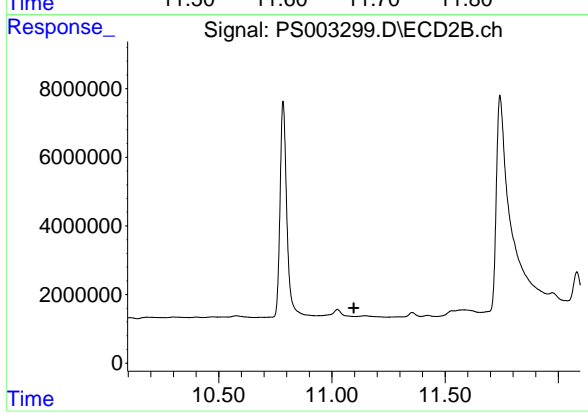
Instrument :
 ECD_S
ClientSampled :
 NB-07-022019-B



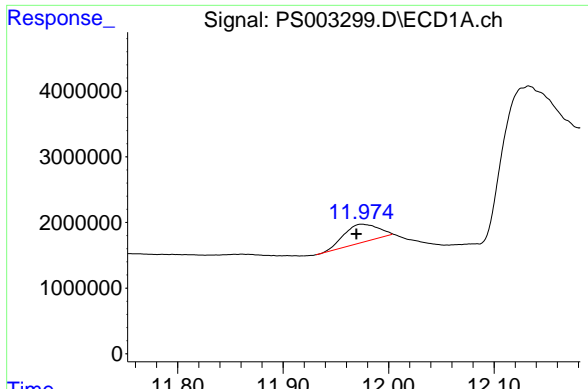
#4 2,4-DCAA
 R.T.: 10.784 min
 Delta R.T.: -0.032 min
 Response: 129543019
 Conc: 302.99 ng/ml



#5 DICAMBA
 R.T.: 11.689 min
 Delta R.T.: 0.065 min
 Response: 2004065
 Conc: 1.25 ng/ml

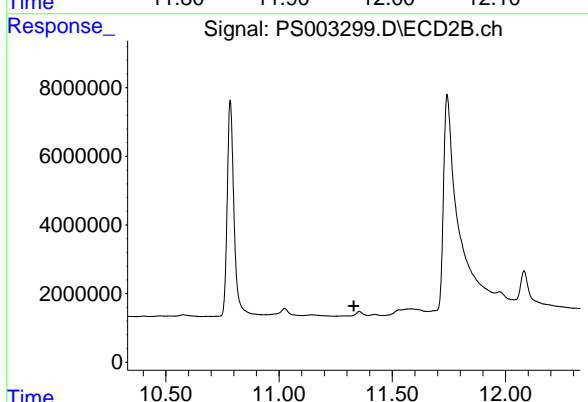


#5 DICAMBA
 R.T.: 0.000 min
 Exp R.T. : 11.097 min
 Response: 0
 Conc: N.D.



#6 MCPP
R.T.: 11.975 min
Delta R.T.: 0.006 min
Response: 6911387
Conc: 5.77 ug/ml

Instrument :
ECD_S
ClientSampled :
NB-07-022019-B



#6 MCPP
R.T.: 0.000 min
Exp R.T. : 11.330 min
Response: 0
Conc: N.D.