

Data Path : Z:\pestpcbsrv\HPCHEM1\ECD_S\Data\PS022119\
 Data File : PS003303.D
 Signal(s) : Signal #1: ECD1A.ch Signal #2: ECD2B.ch
 Acq On : 21 Feb 2019 22:48
 Operator : EI\SJ
 Sample : K1349-10
 Misc :
 ALS Vial : 12 Sample Multiplier: 1

Instrument :
 ECD_S
 ClientSampleId :
 OR-02-021919-A

Integration File signal 1: autoint1.e
 Integration File signal 2: autoint2.e
 Quant Time: Feb 22 00:00:50 2019
 Quant Method : Z:\pestpcbsrv\HPCHEM1\ECD_S\Method\PS012819.M
 Quant Title : 8080.M
 QLast Update : Tue Jan 29 06:11:45 2019
 Response via : Initial Calibration
 Integrator: ChemStation

Volume Inj. : 2 µl
 Signal #1 Phase : Rtx-CLPesticides Signal #2 Phase: Rtx-CLPesticides2
 Signal #1 Info : 30M x 0.32mm x0.5 Signal #2 Info : 30M x 0.32mm x 0.25µm

Compound	RT#1	RT#2	Resp#1	Resp#2	ng/ml	ng/ml

System Monitoring Compounds						
4) S 2,4-DCAA	11.310	10.811	154.9E6	157.2E6	407.970	367.714
Target Compounds						
1) T Dalapon	2.830	0.000	6425880	0	11.649	N.D. #
7) T MCPA	0.000	11.771	0	245.9E6	N.D.	156.334 #
12) T 2,4,5-T	0.000	14.437	0	4101894	N.D.	2.144 #
15) T Picloram	0.000	16.742	0	5987090	N.D.	1.991 #

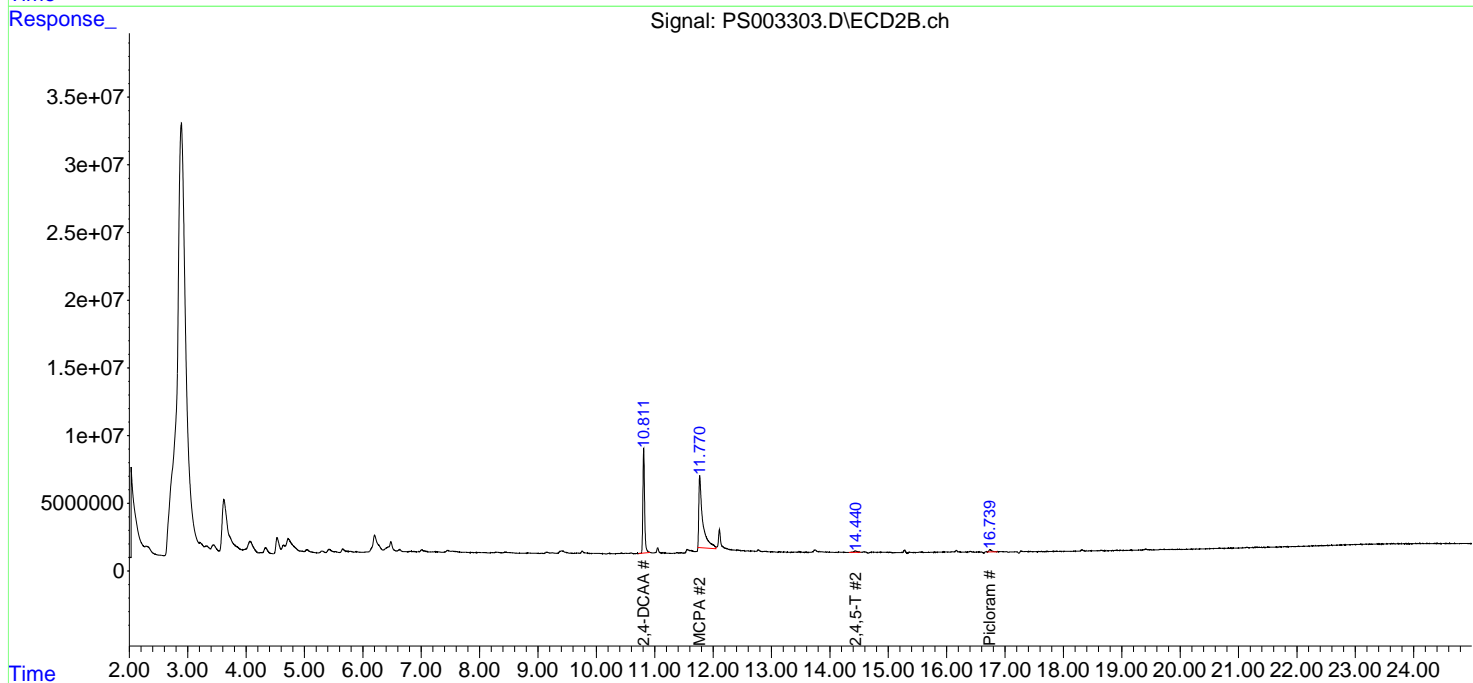
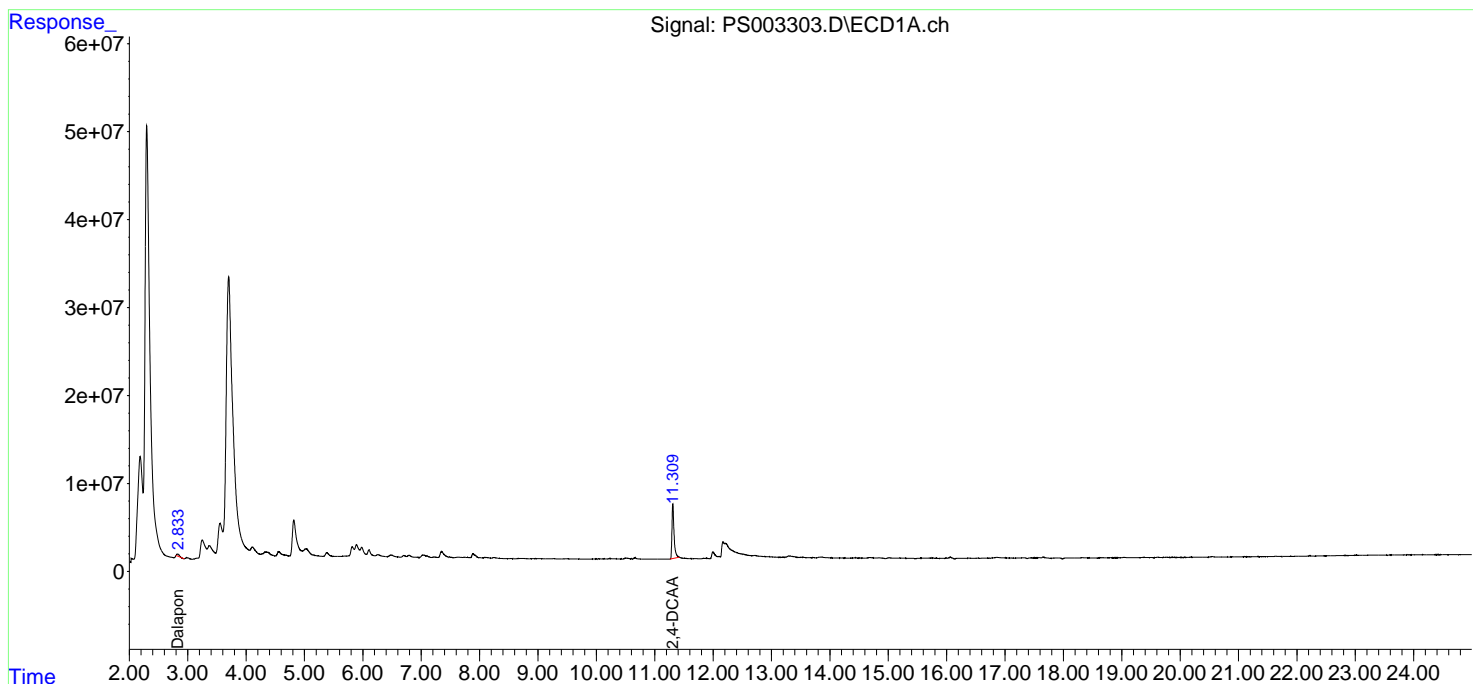
(f)=RT Delta > 1/2 Window (#)=Amounts differ by > 25% (m)=manual int.

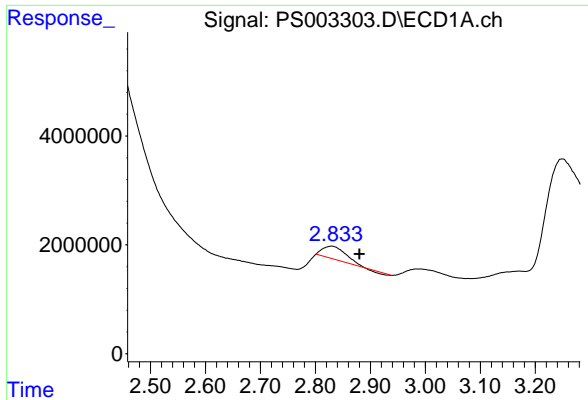
Data Path : Z:\pestpcbsrv\HPCHEM1\ECD_S\Data\PS022119\
 Data File : PS003303.D
 Signal(s) : Signal #1: ECD1A.ch Signal #2: ECD2B.ch
 Acq On : 21 Feb 2019 22:48
 Operator : EI\SJ
 Sample : K1349-10
 Misc :
 ALS Vial : 12 Sample Multiplier: 1

Instrument :
 ECD_S
 ClientSampleId :
 OR-02-021919-A

Integration File signal 1: autoint1.e
 Integration File signal 2: autoint2.e
 Quant Time: Feb 22 00:00:50 2019
 Quant Method : Z:\pestpcbsrv\HPCHEM1\ECD_S\Method\PS012819.M
 Quant Title : 8080.M
 QLast Update : Tue Jan 29 06:11:45 2019
 Response via : Initial Calibration
 Integrator: ChemStation

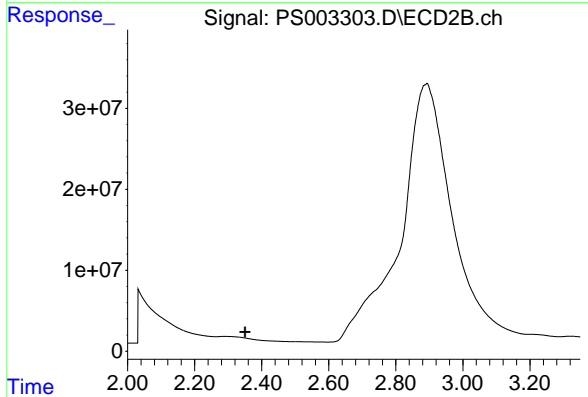
Volume Inj. : 2 µl
 Signal #1 Phase : Rtx-CLPesticides Signal #2 Phase: Rtx-CLPesticides2
 Signal #1 Info : 30M x 0.32mm x 0.5 Signal #2 Info : 30M x 0.32mm x 0.25µm



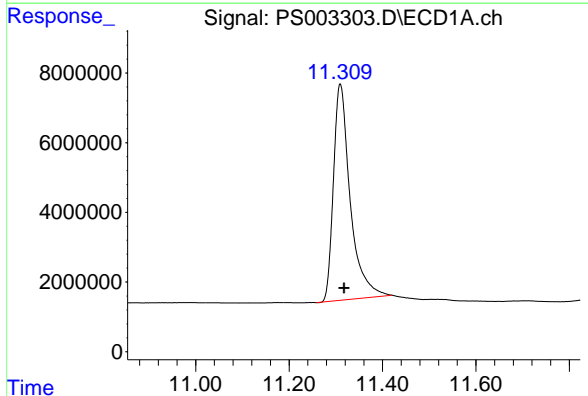


#1 Dalapon
 R.T.: 2.830 min
 Delta R.T.: -0.050 min
 Response: 6425880
 Conc: 11.65 ng/ml

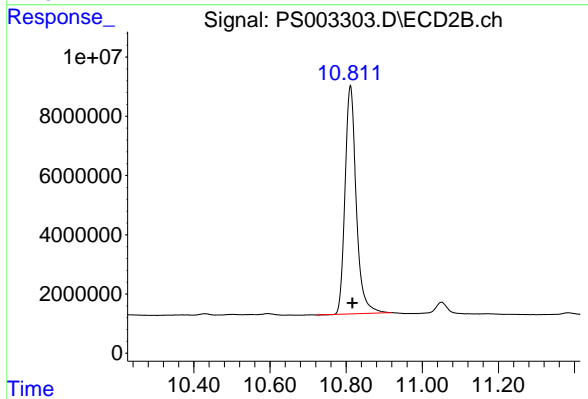
Instrument :
 ECD_S
 ClientSampled :
 OR-02-021919-A



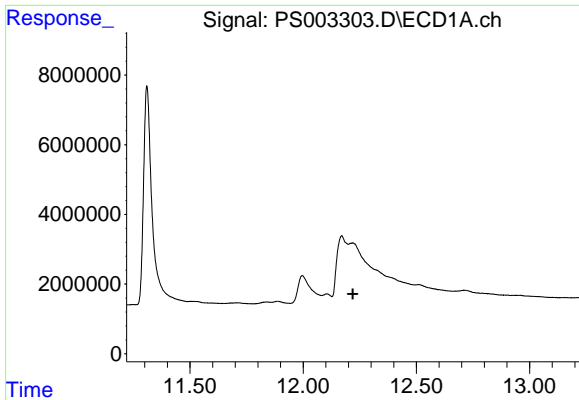
#1 Dalapon
 R.T.: 0.000 min
 Exp R.T. : 2.351 min
 Response: 0
 Conc: N.D.



#4 2,4-DCAA
 R.T.: 11.310 min
 Delta R.T.: -0.008 min
 Response: 154881978
 Conc: 407.97 ng/ml

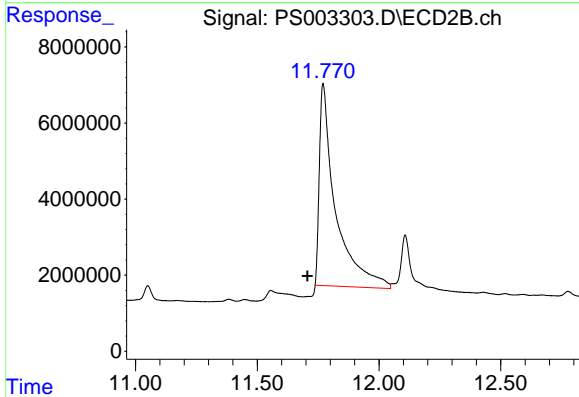


#4 2,4-DCAA
 R.T.: 10.811 min
 Delta R.T.: -0.006 min
 Response: 157214610
 Conc: 367.71 ng/ml

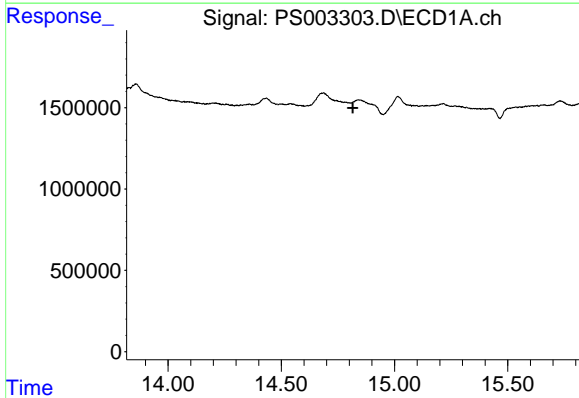


#7 MCPA
 R.T.: 0.000 min
 Exp R.T. : 12.219 min
 Response: 0
 Conc: N.D.

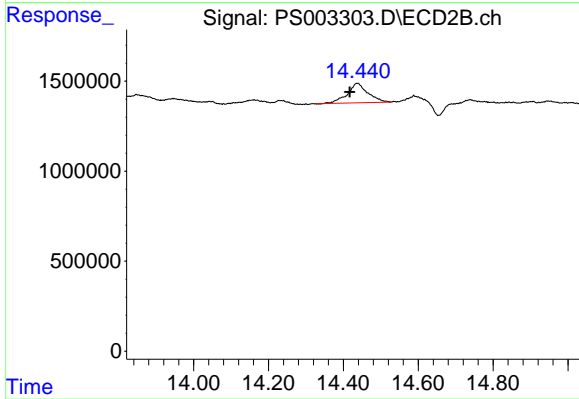
Instrument :
 ECD_S
 ClientSampleId :
 OR-02-021919-A



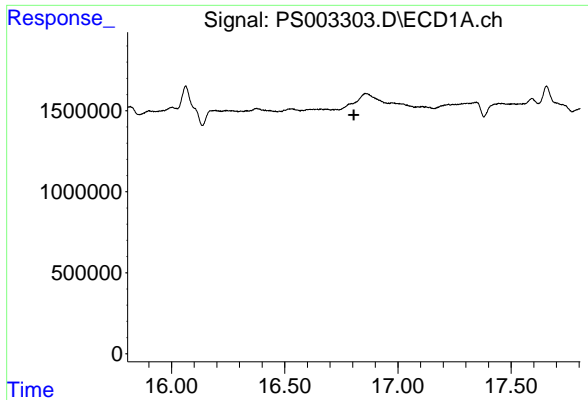
#7 MCPA
 R.T.: 11.771 min
 Delta R.T.: 0.065 min
 Response: 245923991
 Conc: 156.33 ug/ml



#12 2,4,5-T
 R.T.: 0.000 min
 Exp R.T. : 14.817 min
 Response: 0
 Conc: N.D.



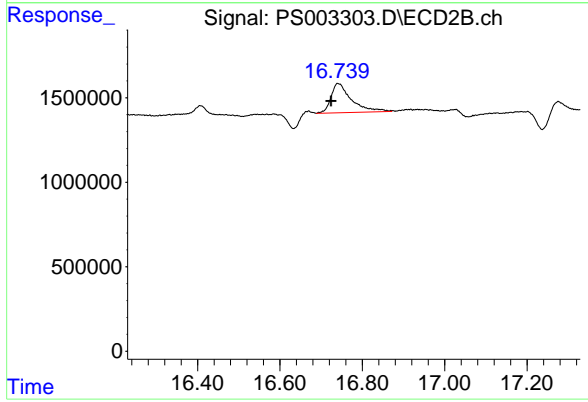
#12 2,4,5-T
 R.T.: 14.437 min
 Delta R.T.: 0.020 min
 Response: 4101894
 Conc: 2.14 ng/ml



#15 Picloram

R.T.: 0.000 min
Exp R.T. : 16.806 min
Response: 0
Conc: N.D.

Instrument :
ECD_S
ClientSampled :
OR-02-021919-A



#15 Picloram

R.T.: 16.742 min
Delta R.T.: 0.017 min
Response: 5987090
Conc: 1.99 ng/ml