

Data Path : Z:\pestpcbsrv\HPCHEM1\ECD_S\Data\PS022119\
 Data File : PS003317.D
 Signal(s) : Signal #1: ECD1A.ch Signal #2: ECD2B.ch
 Acq On : 22 Feb 2019 06:02
 Operator : EI\SJ
 Sample : K1547-04
 Misc :
 ALS Vial : 24 Sample Multiplier: 1

Instrument :
 ECD_S
 ClientSampleId :

Integration File signal 1: autoint1.e
 Integration File signal 2: autoint2.e
 Quant Time: Feb 22 07:11:03 2019
 Quant Method : Z:\pestpcbsrv\HPCHEM1\ECD_S\Method\PS012819.M
 Quant Title : 8080.M
 QLast Update : Tue Jan 29 06:11:45 2019
 Response via : Initial Calibration
 Integrator: ChemStation

Volume Inj. : 2 µl
 Signal #1 Phase : Rtx-CLPesticides Signal #2 Phase: Rtx-CLPesticides2
 Signal #1 Info : 30M x 0.32mm x0.5 Signal #2 Info : 30M x 0.32mm x 0.25µm

Compound	RT#1	RT#2	Resp#1	Resp#2	ng/ml	ng/ml

System Monitoring Compounds						
4) S 2,4-DCAA	11.297	10.799	173.9E6	174.1E6	458.133	407.223
Target Compounds						
6) T MCPP	11.983	0.000	6699406	0	5.592	N.D. #
9) T 2,4-D	13.210	0.000	1740398	0	3.775	N.D. #
15) T Picloram	0.000	16.745	0	11161153	N.D.	3.712 #
16) T DCPA	17.435	0.000	3203315	0	1.065	N.D. #

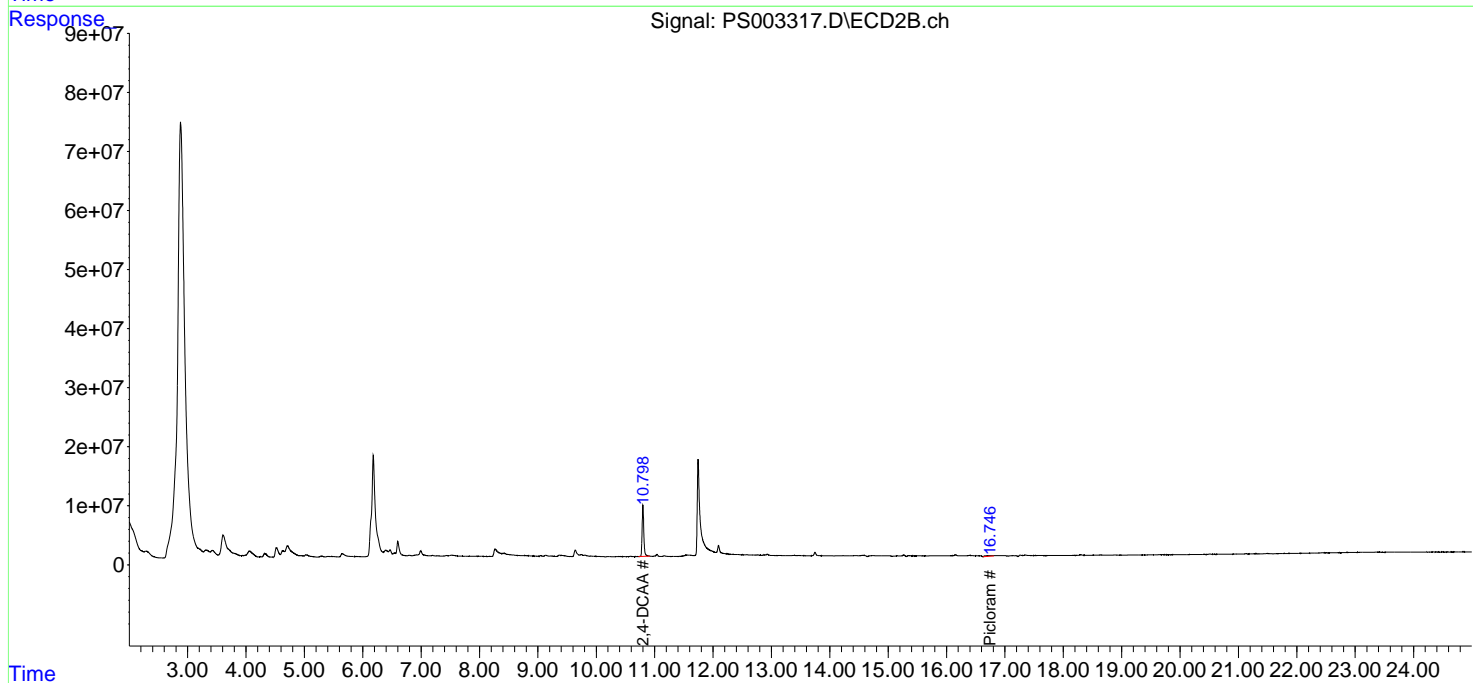
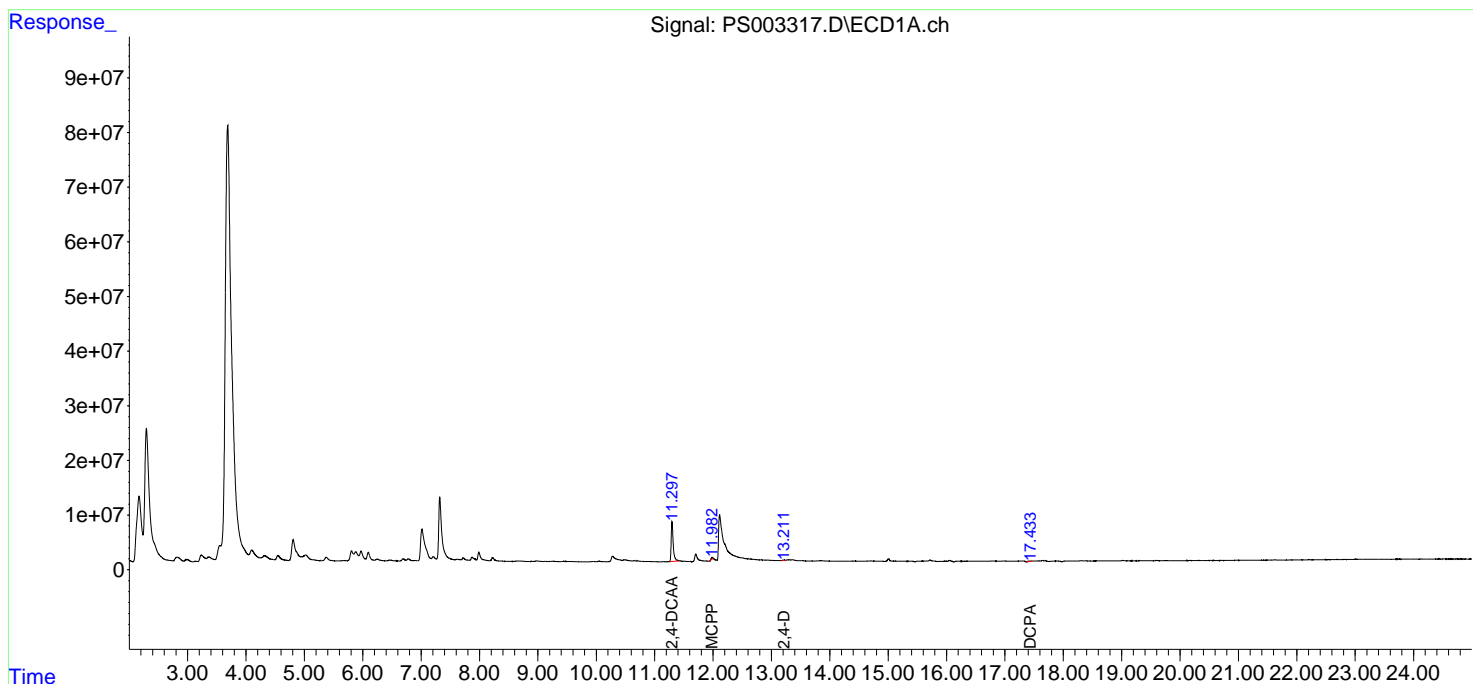
(f)=RT Delta > 1/2 Window (#)=Amounts differ by > 25% (m)=manual int.

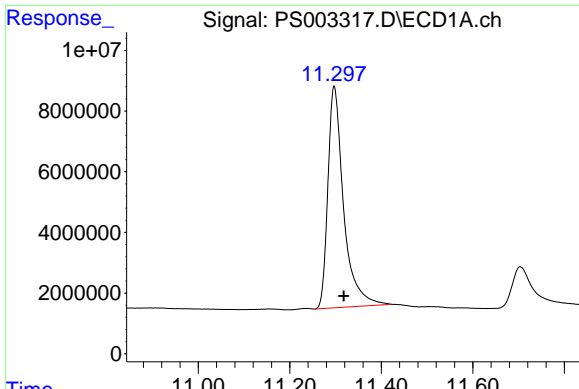
Data Path : Z:\pestpcbsrv\HPCHEM1\ECD_S\Data\PS022119\
 Data File : PS003317.D
 Signal(s) : Signal #1: ECD1A.ch Signal #2: ECD2B.ch
 Acq On : 22 Feb 2019 06:02
 Operator : EI\SJ
 Sample : K1547-04
 Misc :
 ALS Vial : 24 Sample Multiplier: 1

Instrument :
 ECD_S
 ClientSampleId :

Integration File signal 1: autoint1.e
 Integration File signal 2: autoint2.e
 Quant Time: Feb 22 07:11:03 2019
 Quant Method : Z:\pestpcbsrv\HPCHEM1\ECD_S\Method\PS012819.M
 Quant Title : 8080.M
 QLast Update : Tue Jan 29 06:11:45 2019
 Response via : Initial Calibration
 Integrator: ChemStation

Volume Inj. : 2 µl
 Signal #1 Phase : Rtx-CLPesticides Signal #2 Phase: Rtx-CLPesticides2
 Signal #1 Info : 30M x 0.32mm x 0.5 Signal #2 Info : 30M x 0.32mm x 0.25µm

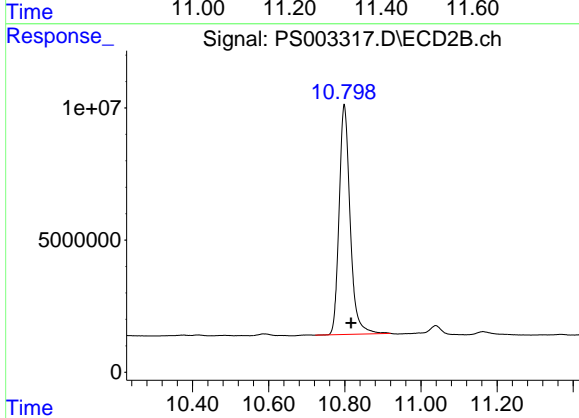




#4 2,4-DCAA

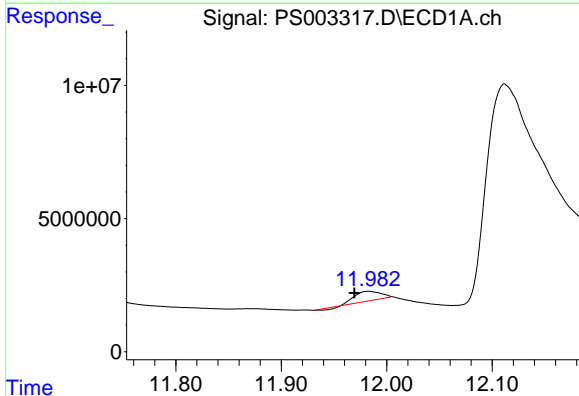
R.T.: 11.297 min
 Delta R.T.: -0.021 min
 Response: 173925838
 Conc: 458.13 ng/ml

Instrument :
 ECD_S
 ClientSampleId :



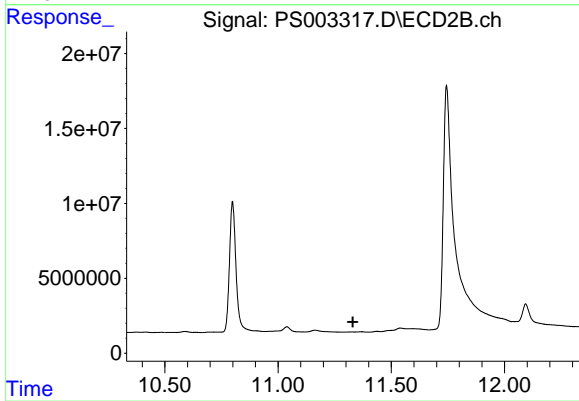
#4 2,4-DCAA

R.T.: 10.799 min
 Delta R.T.: -0.018 min
 Response: 174106547
 Conc: 407.22 ng/ml



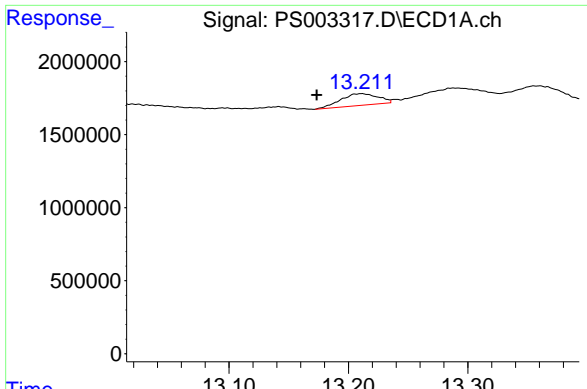
#6 MCP

R.T.: 11.983 min
 Delta R.T.: 0.013 min
 Response: 6699406
 Conc: 5.59 ug/ml



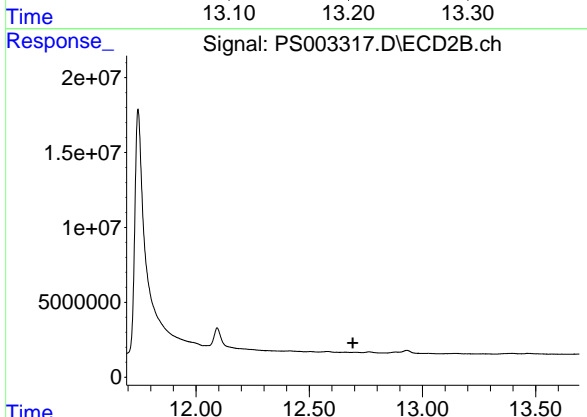
#6 MCP

R.T.: 0.000 min
 Exp R.T. : 11.330 min
 Response: 0
 Conc: N.D.

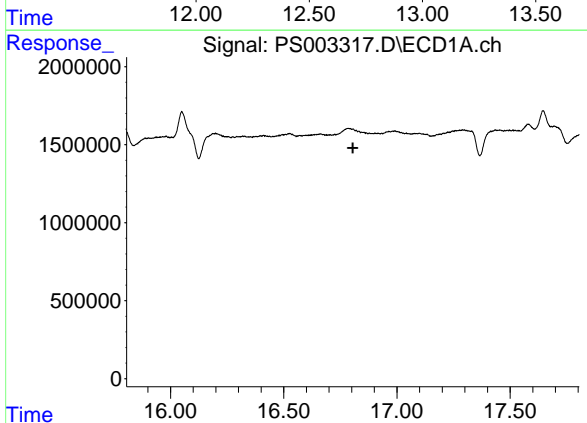


#9 2,4-D
 R.T.: 13.210 min
 Delta R.T.: 0.037 min
 Response: 1740398
 Conc: 3.77 ng/ml

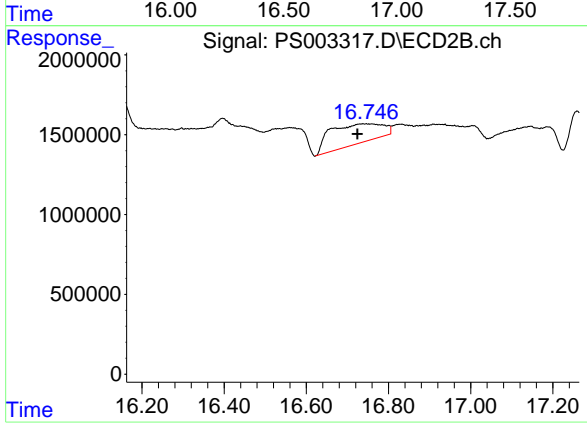
Instrument :
 ECD_S
 ClientSampled :



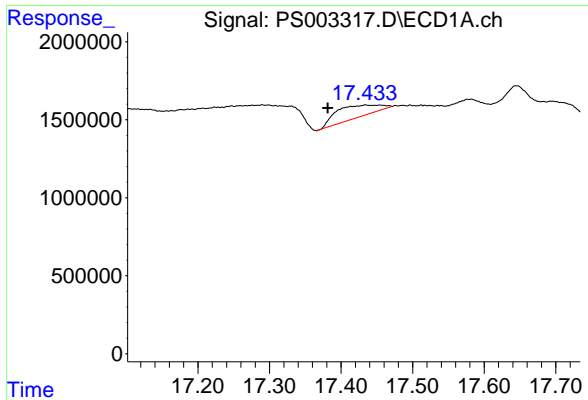
#9 2,4-D
 R.T.: 0.000 min
 Exp R.T. : 12.693 min
 Response: 0
 Conc: N.D.



#15 Picloram
 R.T.: 0.000 min
 Exp R.T. : 16.806 min
 Response: 0
 Conc: N.D.

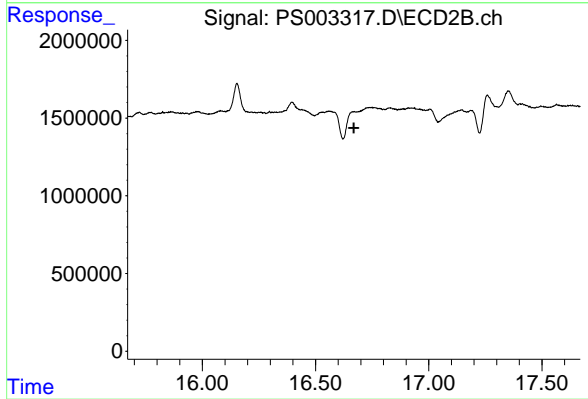


#15 Picloram
 R.T.: 16.745 min
 Delta R.T.: 0.021 min
 Response: 11161153
 Conc: 3.71 ng/ml



#16 DCPA
 R.T.: 17.435 min
 Delta R.T.: 0.053 min
 Response: 3203315
 Conc: 1.07 ng/ml

Instrument :
 ECD_S
 ClientSampleId :



#16 DCPA
 R.T.: 0.000 min
 Exp R.T. : 16.670 min
 Response: 0
 Conc: N.D.