

Data Path : Z:\pestpcbsrv\HPCHEM1\ECD_S\Data\PS022123\
 Data File : PS022220.D
 Signal(s) : Signal #1: ECD1A.ch Signal #2: ECD2B.ch
 Acq On : 21 Feb 2023 18:10
 Operator : AR\AJ
 Sample : PB150978BS
 Misc :
 ALS Vial : 9 Sample Multiplier: 1

Instrument :
 ECD_S
 ClientSampleId :

Integration File signal 1: autoint1.e
 Integration File signal 2: autoint2.e
 Quant Time: Feb 22 01:36:24 2023
 Quant Method : Z:\pestpcbsrv\HPCHEM1\ECD_S\Method\PS022023.M
 Quant Title : 8080.M
 QLast Update : Mon Feb 20 13:26:02 2023
 Response via : Initial Calibration
 Integrator: ChemStation

Volume Inj. : 2 µl
 Signal #1 Phase : Rtx-CLPesticides Signal #2 Phase: Rtx-CLPesticides2
 Signal #1 Info : 30M x 0.32mm x0.5 Signal #2 Info : 30M x 0.32mm x 0.25µm

Compound	RT#1	RT#2	Resp#1	Resp#2	ng/ml	ng/ml

System Monitoring Compounds						
4) S 2,4-DCAA	6.302	6.724	1377.6E6	1112.8E6	555.780	530.163
Target Compounds						
1) T Dalapon	2.408	2.482	1549.9E6	1608.2E6	488.891	499.423
2) T 3,5-DICHL...	5.682	5.924	1936.5E6	1638.6E6	520.924	529.901
3) T 4-Nitroph...	6.150	6.354	658.2E6	684.2E6	517.253	512.267
5) T DICAMBA	6.436	6.881	5506.1E6	5217.1E6	530.626	539.855
6) T MCPP	6.587	6.978	393.7E6	402.8E6	51.603	52.762
7) T MCPA	6.709	7.188	538.1E6	532.4E6	51.672	52.232
8) T DICHLORPROP	7.023	7.503	1405.1E6	1293.1E6	520.305	525.987
9) T 2,4-D	7.228	7.796	1733.0E6	1542.9E6	528.573	532.833
10) T Pentachlo...	7.443	8.211	20078.1E6	18192.3E6	557.680	561.461
11) T 2,4,5-TP ...	7.972	8.575	8311.0E6	7360.7E6	538.888	547.218
12) T 2,4,5-T	8.233	8.951	9215.5E6	6630.1E6	531.181	551.267
13) T 2,4-DB	8.740	9.456	1335.7E6	918.8E6	492.706	553.435
14) T DINOSEB	9.781	9.778	7173.4E6	5097.3E6	521.972	534.257
15) T Picloram	9.624	10.750	12176.8E6	9813.8E6	494.310	500.553
16) T DCPA	10.048	10.702	11488.5E6	8666.9E6	539.402	553.977

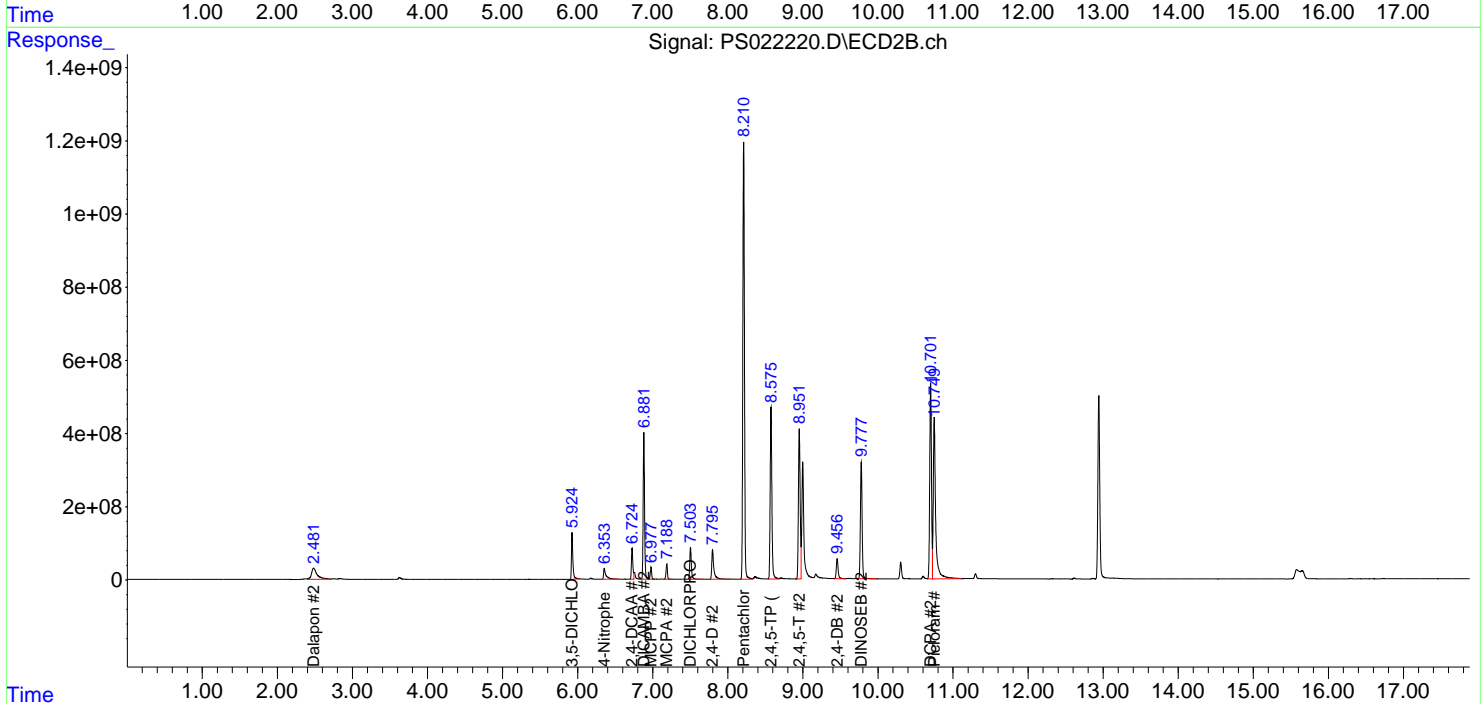
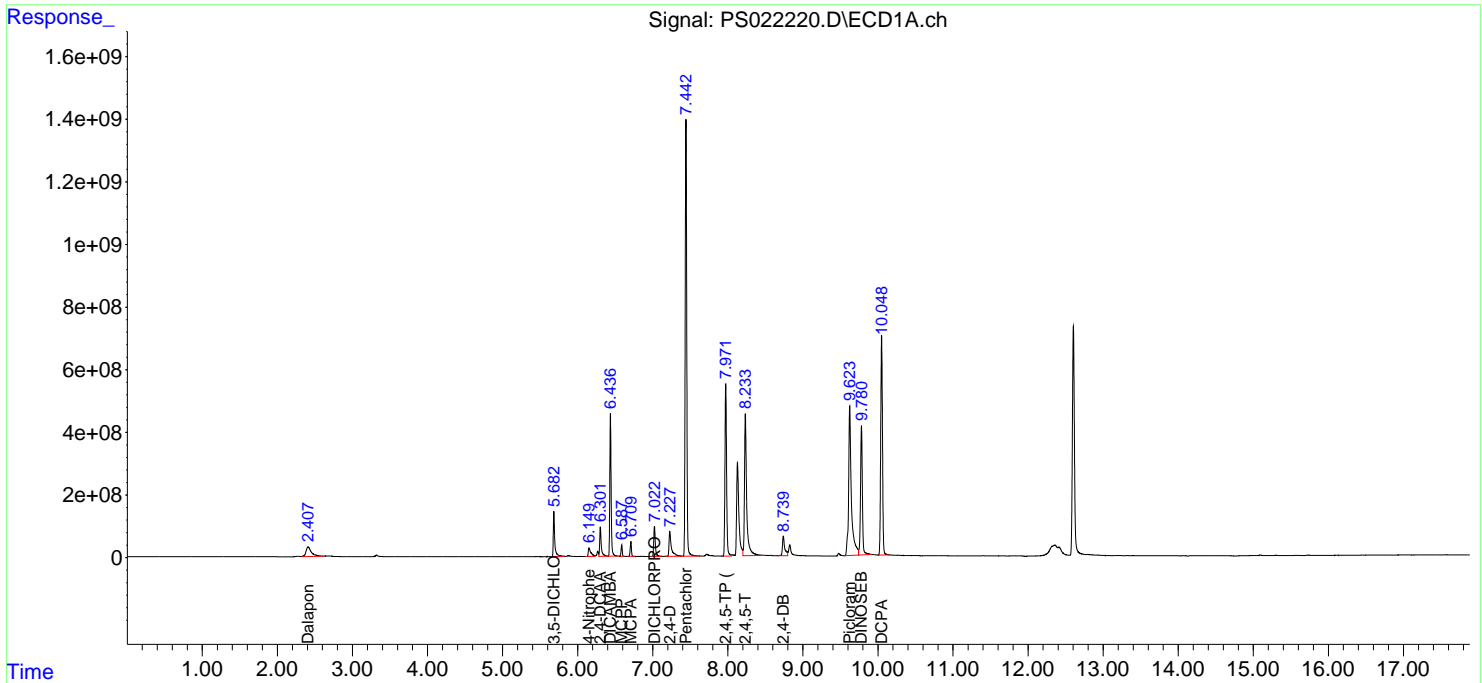
(f)=RT Delta > 1/2 Window (#)=Amounts differ by > 25% (m)=manual int.

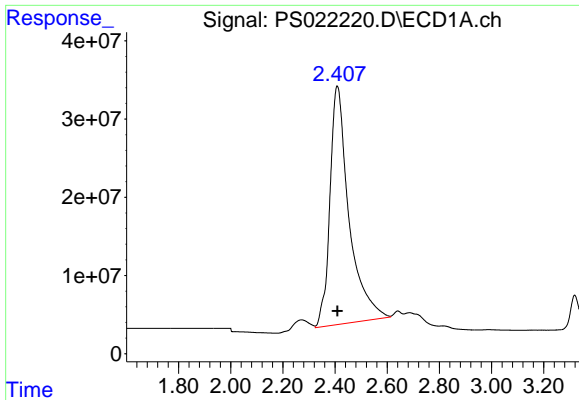
Data Path : Z:\pestpcbsrv\HPCHEM1\ECD_S\Data\PS022123\
 Data File : PS022220.D
 Signal(s) : Signal #1: ECD1A.ch Signal #2: ECD2B.ch
 Acq On : 21 Feb 2023 18:10
 Operator : AR\AJ
 Sample : PB150978BS
 Misc :
 ALS Vial : 9 Sample Multiplier: 1

Instrument :
 ECD_S
 ClientSampleId :

Integration File signal 1: autoint1.e
 Integration File signal 2: autoint2.e
 Quant Time: Feb 22 01:36:24 2023
 Quant Method : Z:\pestpcbsrv\HPCHEM1\ECD_S\Method\PS022023.M
 Quant Title : 8080.M
 QLast Update : Mon Feb 20 13:26:02 2023
 Response via : Initial Calibration
 Integrator: ChemStation

Volume Inj. : 2 µl
 Signal #1 Phase : Rtx-CLPesticides Signal #2 Phase: Rtx-CLPesticides2
 Signal #1 Info : 30M x 0.32mm x0.5 Signal #2 Info : 30M x 0.32mm x 0.25µm

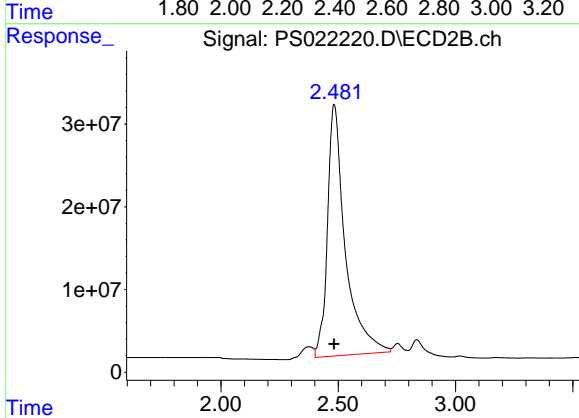




#1 Dalapon

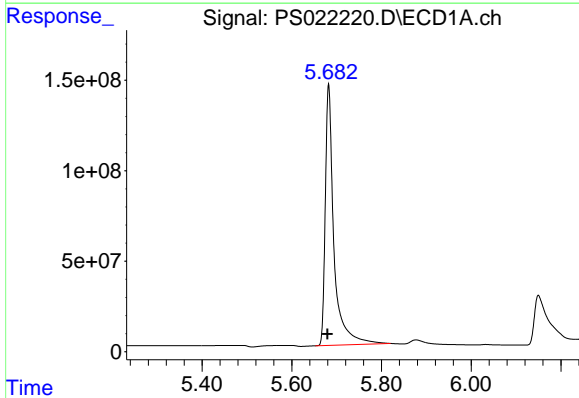
R.T.: 2.408 min
 Delta R.T.: 0.000 min
 Response: 1549921299
 Conc: 488.89 ng/ml

Instrument :
 ECD_S
 ClientSampleId :



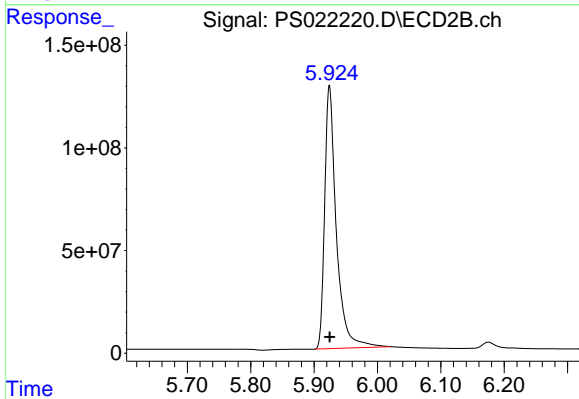
#1 Dalapon

R.T.: 2.482 min
 Delta R.T.: -0.001 min
 Response: 1608219277
 Conc: 499.42 ng/ml



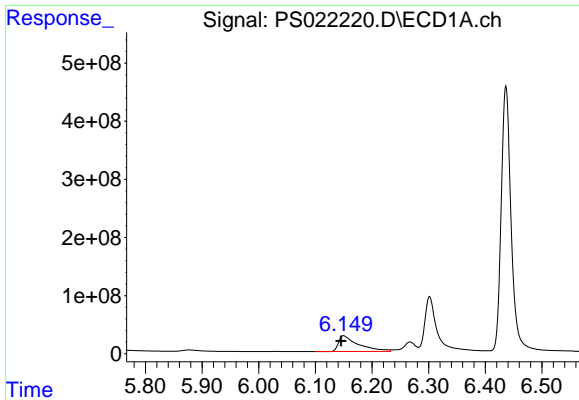
#2 3,5-DICHLOROBENZOIC ACID

R.T.: 5.682 min
 Delta R.T.: 0.003 min
 Response: 1936480555
 Conc: 520.92 ng/ml



#2 3,5-DICHLOROBENZOIC ACID

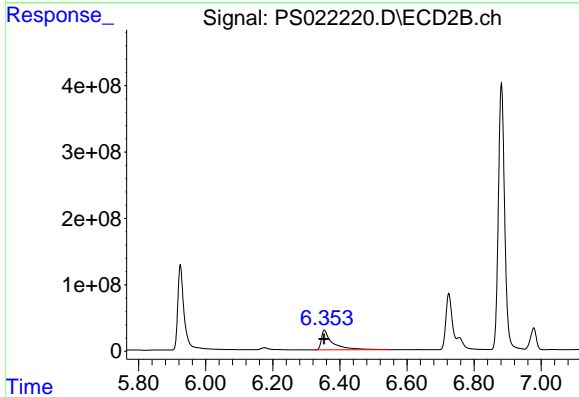
R.T.: 5.924 min
 Delta R.T.: 0.000 min
 Response: 1638626397
 Conc: 529.90 ng/ml



#3 4-Nitrophenol

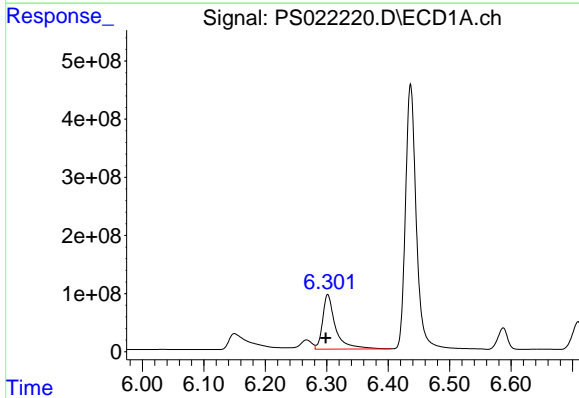
R.T.: 6.150 min
 Delta R.T.: 0.005 min
 Response: 658213791
 Conc: 517.25 ng/ml

Instrument :
 ECD_S
 ClientSampleId :



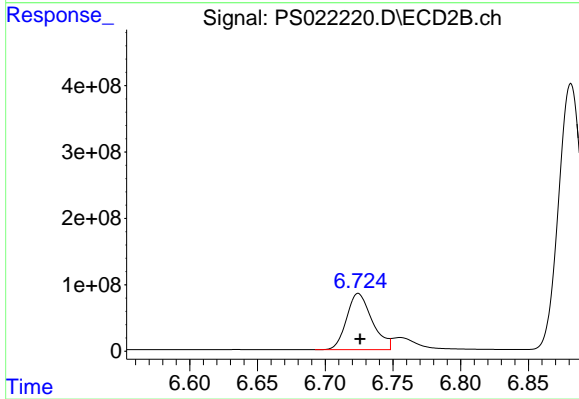
#3 4-Nitrophenol

R.T.: 6.354 min
 Delta R.T.: 0.000 min
 Response: 684152326
 Conc: 512.27 ng/ml



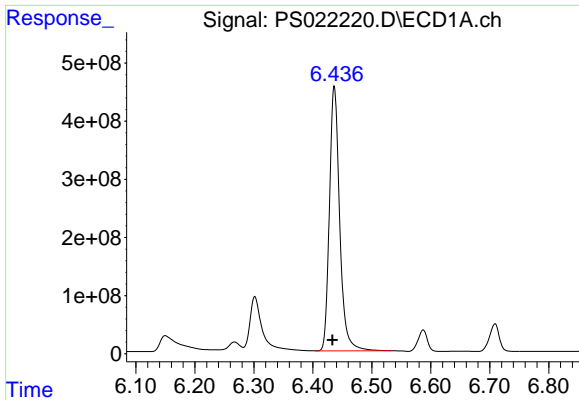
#4 2,4-DCAA

R.T.: 6.302 min
 Delta R.T.: 0.003 min
 Response: 1377606103
 Conc: 555.78 ng/ml



#4 2,4-DCAA

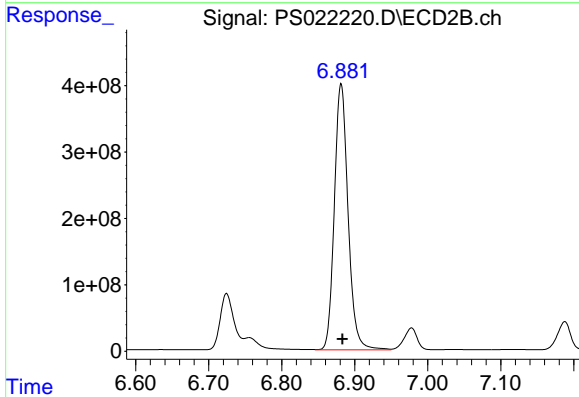
R.T.: 6.724 min
 Delta R.T.: -0.001 min
 Response: 1112793384
 Conc: 530.16 ng/ml



#5 DICAMBA

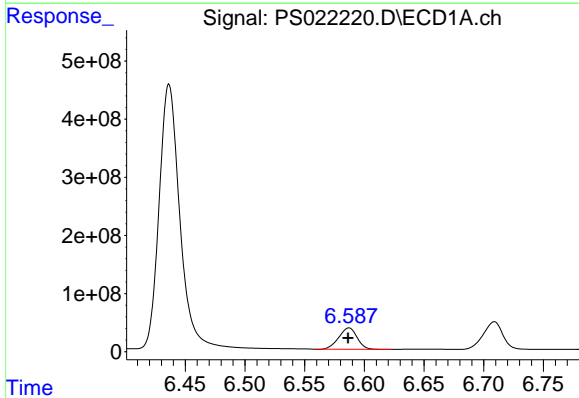
R.T.: 6.436 min
 Delta R.T.: 0.003 min
 Response: 5506090121
 Conc: 530.63 ng/ml

Instrument :
 ECD_S
 ClientSampleId :



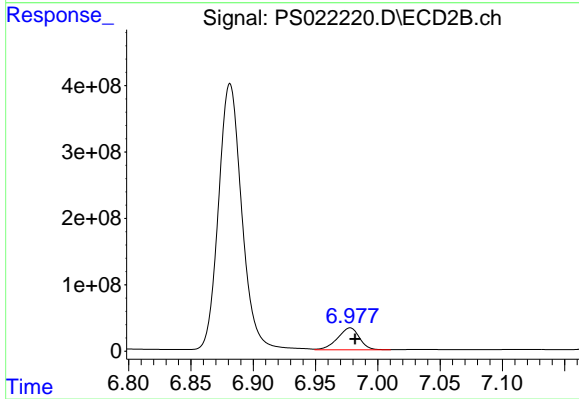
#5 DICAMBA

R.T.: 6.881 min
 Delta R.T.: -0.002 min
 Response: 5217142782
 Conc: 539.85 ng/ml



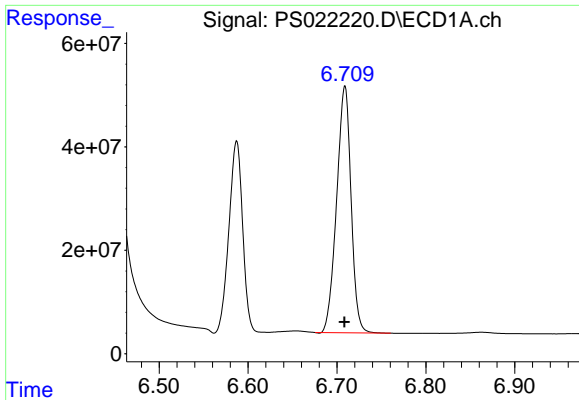
#6 MCP

R.T.: 6.587 min
 Delta R.T.: 0.000 min
 Response: 393747292
 Conc: 51.60 ug/ml



#6 MCP

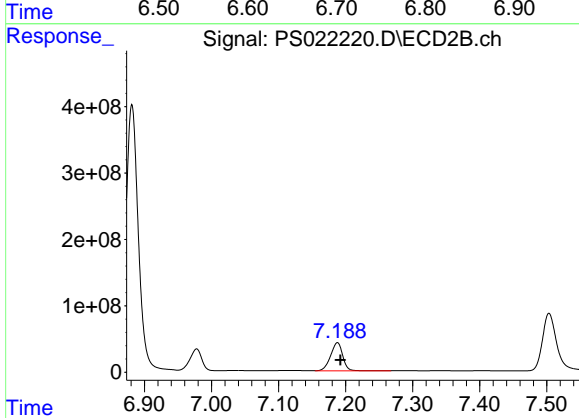
R.T.: 6.978 min
 Delta R.T.: -0.004 min
 Response: 402816919
 Conc: 52.76 ug/ml



#7 MCPA

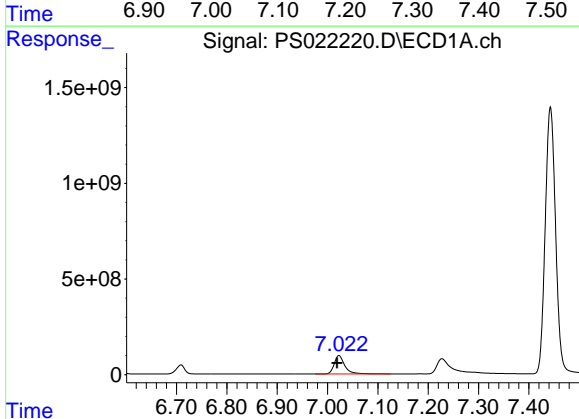
R.T.: 6.709 min
 Delta R.T.: 0.000 min
 Response: 538123812
 Conc: 51.67 ug/ml

Instrument :
 ECD_S
 ClientSampleId :



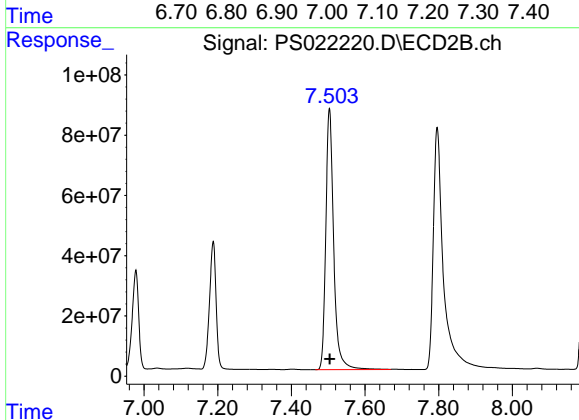
#7 MCPA

R.T.: 7.188 min
 Delta R.T.: -0.005 min
 Response: 532385039
 Conc: 52.23 ug/ml



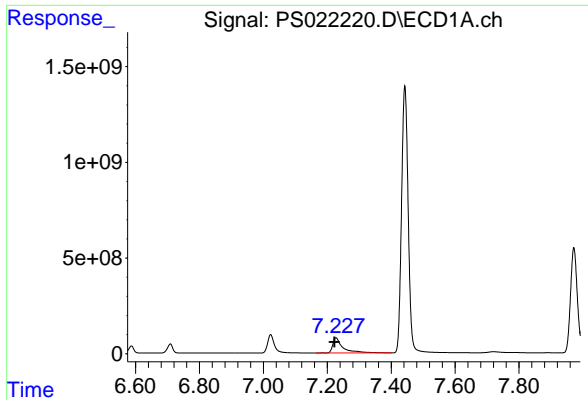
#8 DICHLORPROP

R.T.: 7.023 min
 Delta R.T.: 0.004 min
 Response: 1405143122
 Conc: 520.30 ng/ml



#8 DICHLORPROP

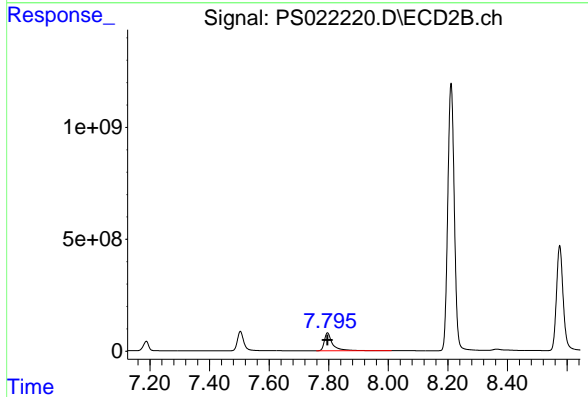
R.T.: 7.503 min
 Delta R.T.: 0.000 min
 Response: 1293102214
 Conc: 525.99 ng/ml



#9 2,4-D

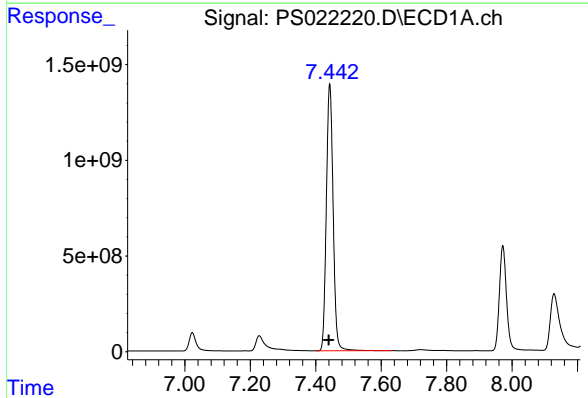
R.T.: 7.228 min
Delta R.T.: 0.005 min
Response: 1733048497
Conc: 528.57 ng/ml

Instrument :
ECD_S
ClientSampleId :



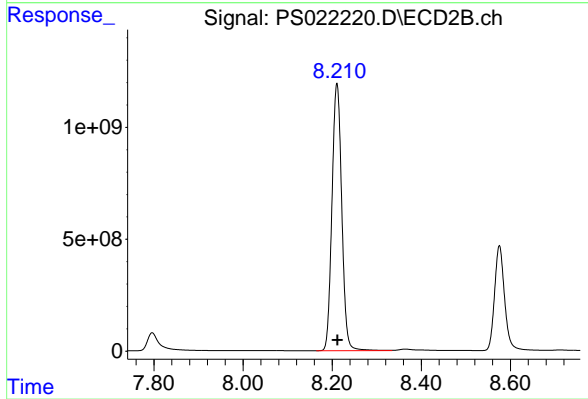
#9 2,4-D

R.T.: 7.796 min
Delta R.T.: 0.000 min
Response: 1542932895
Conc: 532.83 ng/ml



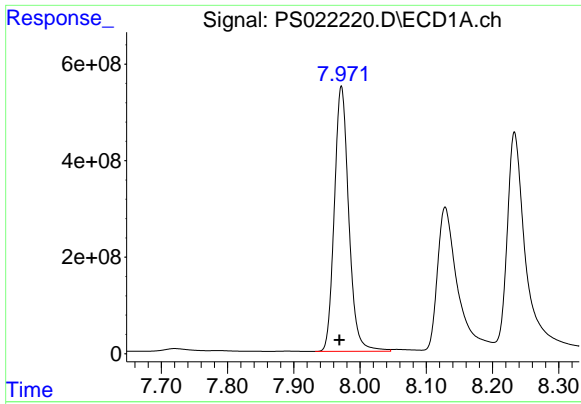
#10 Pentachlorophenol

R.T.: 7.443 min
Delta R.T.: 0.003 min
Response: 20078065396
Conc: 557.68 ng/ml



#10 Pentachlorophenol

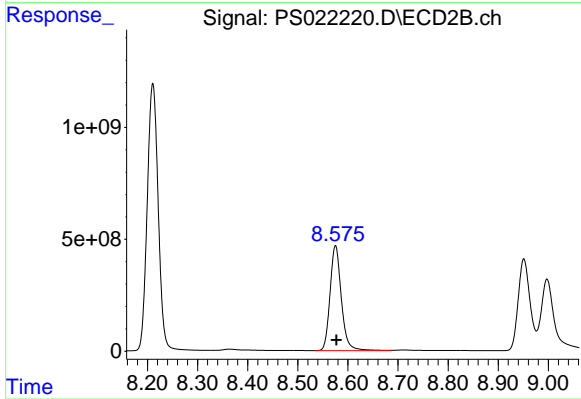
R.T.: 8.211 min
Delta R.T.: -0.001 min
Response: 18192305287
Conc: 561.46 ng/ml



#11 2,4,5-TP (SILVEX)

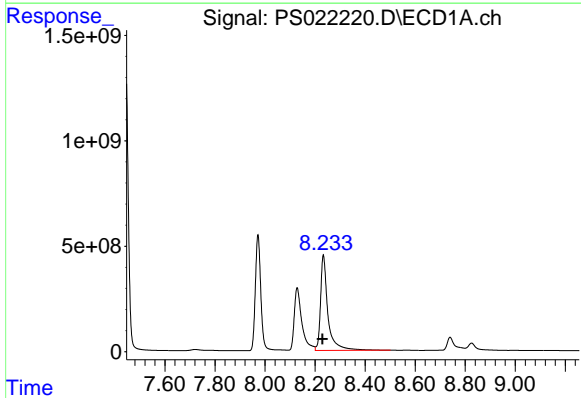
R.T.: 7.972 min
 Delta R.T.: 0.003 min
 Response: 8310975549
 Conc: 538.89 ng/ml

Instrument :
 ECD_S
 ClientSampleId :



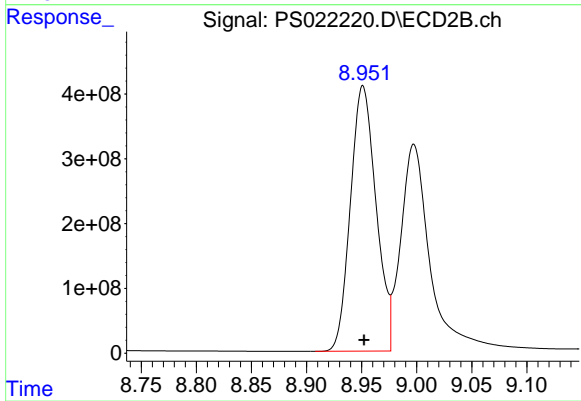
#11 2,4,5-TP (SILVEX)

R.T.: 8.575 min
 Delta R.T.: -0.002 min
 Response: 7360674802
 Conc: 547.22 ng/ml



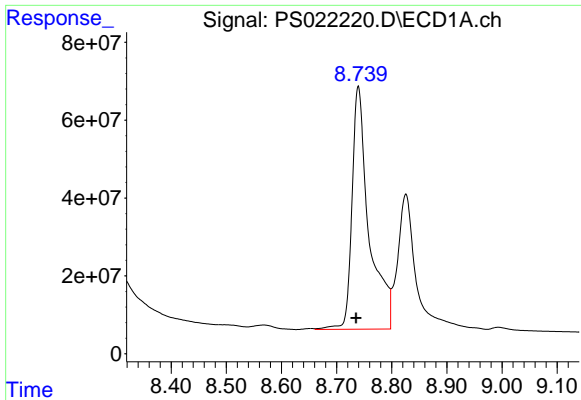
#12 2,4,5-T

R.T.: 8.233 min
 Delta R.T.: 0.004 min
 Response: 9215503591
 Conc: 531.18 ng/ml



#12 2,4,5-T

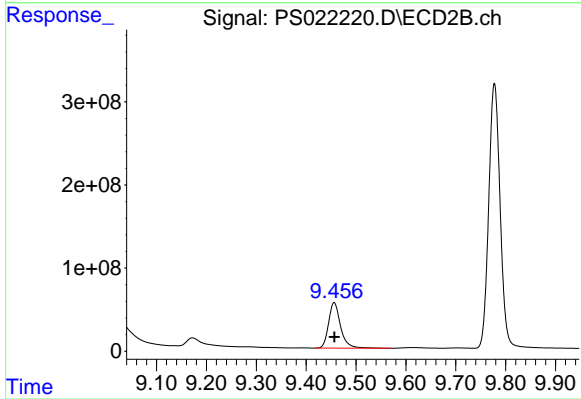
R.T.: 8.951 min
 Delta R.T.: -0.001 min
 Response: 6630121076
 Conc: 551.27 ng/ml



#13 2,4-DB

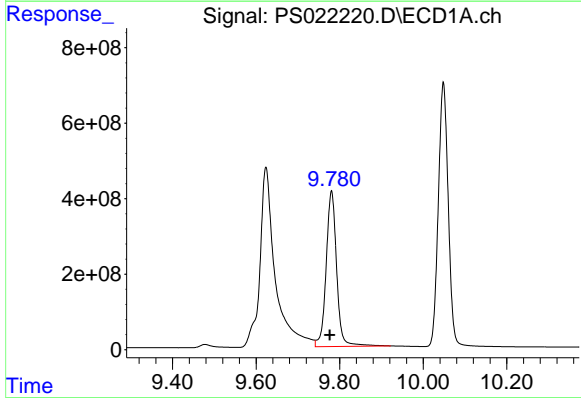
R.T.: 8.740 min
 Delta R.T.: 0.004 min
 Response: 1335692233
 Conc: 492.71 ng/ml

Instrument :
 ECD_S
 ClientSampleId :



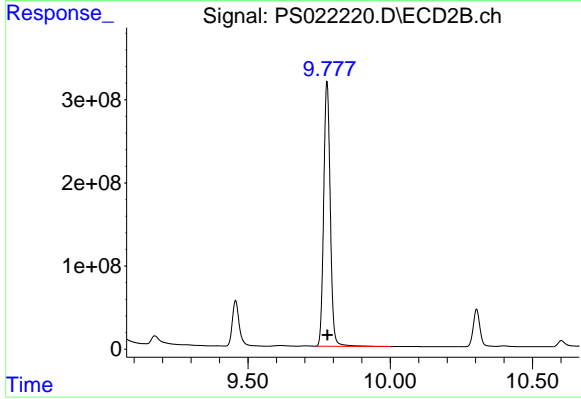
#13 2,4-DB

R.T.: 9.456 min
 Delta R.T.: 0.000 min
 Response: 918847506
 Conc: 553.43 ng/ml



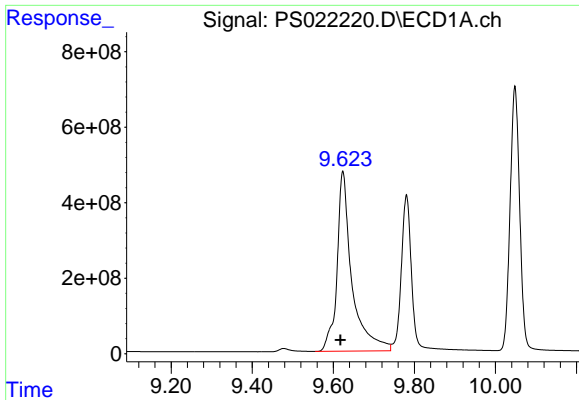
#14 DINOSEB

R.T.: 9.781 min
 Delta R.T.: 0.004 min
 Response: 7173445370
 Conc: 521.97 ng/ml



#14 DINOSEB

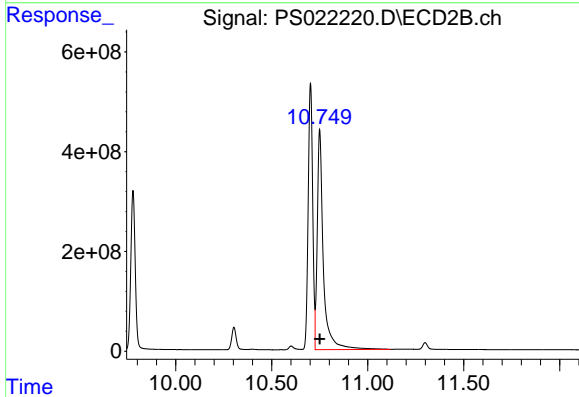
R.T.: 9.778 min
 Delta R.T.: -0.001 min
 Response: 5097325638
 Conc: 534.26 ng/ml



#15 Picloram

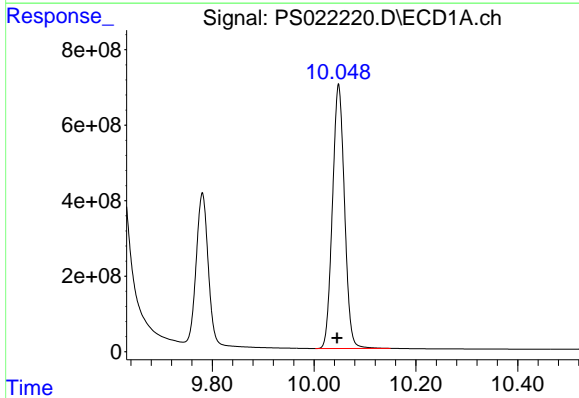
R.T.: 9.624 min
 Delta R.T.: 0.006 min
 Response: 12176834897
 Conc: 494.31 ng/ml

Instrument :
 ECD_S
 ClientSampleId :



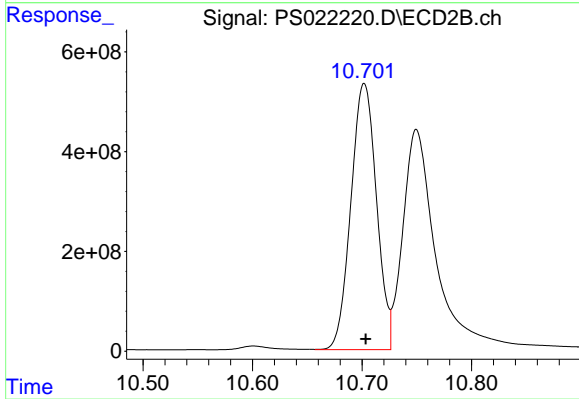
#15 Picloram

R.T.: 10.750 min
 Delta R.T.: 0.000 min
 Response: 9813832574
 Conc: 500.55 ng/ml



#16 DCPA

R.T.: 10.048 min
 Delta R.T.: 0.003 min
 Response: 11488458204
 Conc: 539.40 ng/ml



#16 DCPA

R.T.: 10.702 min
 Delta R.T.: -0.001 min
 Response: 8666893411
 Conc: 553.98 ng/ml