

Data Path : Z:\pestpcbsrv\HPCHEM1\ECD\_S\Data\PS022324\  
 Data File : PS026026.D  
 Signal(s) : Signal #1: ECD1A.ch Signal #2: ECD2B.ch  
 Acq On : 23 Feb 2024 14:48  
 Operator : AR\AJ  
 Sample : PB159220BS  
 Misc :  
 ALS Vial : 9 Sample Multiplier: 1

Instrument :  
 ECD\_S  
 ClientSampleId :

Integration File signal 1: autoint1.e  
 Integration File signal 2: autoint2.e  
 Quant Time: Feb 23 23:06:44 2024  
 Quant Method : Z:\pestpcbsrv\HPCHEM1\ECD\_S\Method\PS022224.M  
 Quant Title : 8080.M  
 QLast Update : Thu Feb 22 12:24:27 2024  
 Response via : Initial Calibration  
 Integrator: ChemStation

Volume Inj. : 2 µl  
 Signal #1 Phase : Rtx-CLPesticides Signal #2 Phase: Rtx-CLPesticides2  
 Signal #1 Info : 30M x 0.32mm x0.5 Signal #2 Info : 30M x 0.32mm x 0.25µm

	Compound	RT#1	RT#2	Resp#1	Resp#2	ng/ml	ng/ml
-----							
System Monitoring Compounds							
4) S	2,4-DCAA	7.245	7.779	1438.6E6	412.6E6	553.972	542.584
Target Compounds							
1) T	Dalapon	2.668	2.719	2145.8E6	800.2E6	480.513	487.456
2) T	3,5-DICHL...	6.416	6.730	1921.8E6	592.6E6	503.307	499.374
3) T	4-Nitroph...	7.045	7.306	693.4E6	186.7E6	537.439	545.009
5) T	DICAMBA	7.433	7.979	5590.7E6	1730.4E6	510.394	494.417
6) T	MCP P	7.614	8.080	379.2E6	133.7E6	49.501	50.233
7) T	MCPA	7.765	8.324	554.9E6	175.3E6	52.331	50.981
8) T	DICHLORPROP	8.144	8.695	1454.9E6	429.7E6	520.103	502.617
9) T	2,4-D	8.376	9.025	1450.3E6	402.6E6	540.983	537.334
10) T	Pentachlo...	8.674	9.553	21082.2E6	6604.7E6	537.736	512.168
11) T	2,4,5-TP ...	9.257	9.928	8049.3E6	2464.5E6	535.837	526.045
12) T	2,4,5-T	9.550	10.348	7594.1E6	2083.8E6	557.109	558.097
13) T	2,4-DB	10.128	10.914	931.9E6	228.4E6	570.990	595.903
14) T	DINOSEB	11.343	11.292	5373.6E6	1593.6E6	498.852	507.790
15) T	Picloram	11.146	12.387	7377.6E6	1787.6E6	512.564	510.195
16) T	DCPA	11.636	12.335	10229.5E6	2812.3E6	544.954	542.064

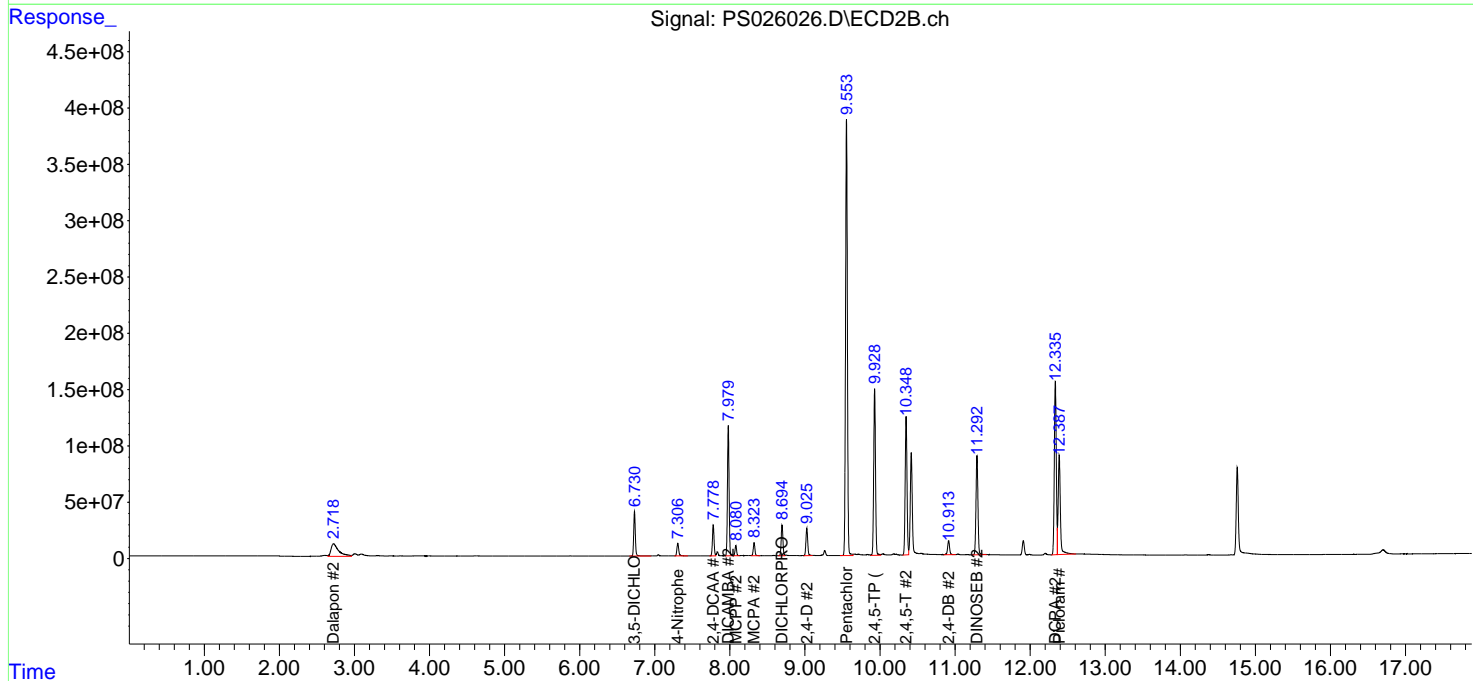
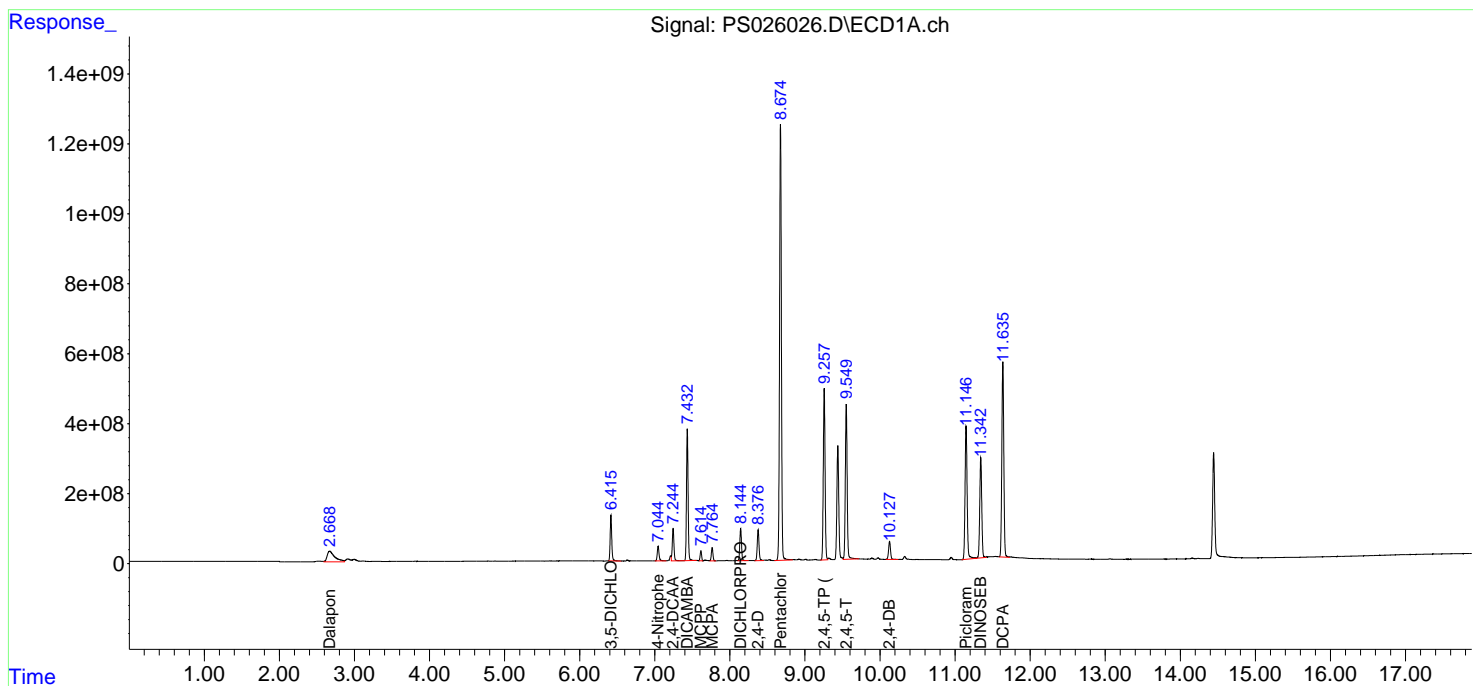
(f)=RT Delta > 1/2 Window (#)=Amounts differ by > 25% (m)=manual int.

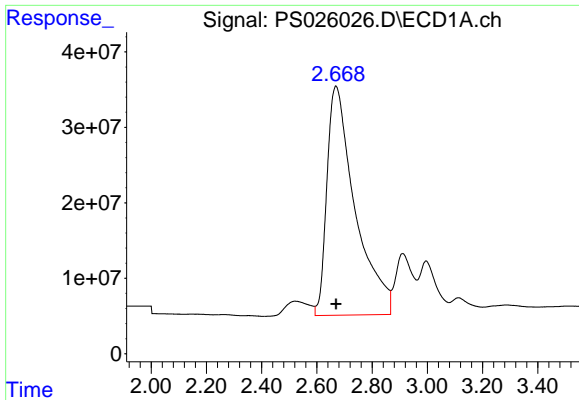
Data Path : Z:\pestpcbsrv\HPCHEM1\ECD\_S\Data\PS022324\  
 Data File : PS026026.D  
 Signal(s) : Signal #1: ECD1A.ch Signal #2: ECD2B.ch  
 Acq On : 23 Feb 2024 14:48  
 Operator : AR\AJ  
 Sample : PB159220BS  
 Misc :  
 ALS Vial : 9 Sample Multiplier: 1

Instrument :  
 ECD\_S  
 ClientSampleId :

Integration File signal 1: autoint1.e  
 Integration File signal 2: autoint2.e  
 Quant Time: Feb 23 23:06:44 2024  
 Quant Method : Z:\pestpcbsrv\HPCHEM1\ECD\_S\Method\PS022224.M  
 Quant Title : 8080.M  
 QLast Update : Thu Feb 22 12:24:27 2024  
 Response via : Initial Calibration  
 Integrator: ChemStation

Volume Inj. : 2 µl  
 Signal #1 Phase : Rtx-CLPesticides Signal #2 Phase: Rtx-CLPesticides2  
 Signal #1 Info : 30M x 0.32mm x0.5 Signal #2 Info : 30M x 0.32mm x 0.25µm

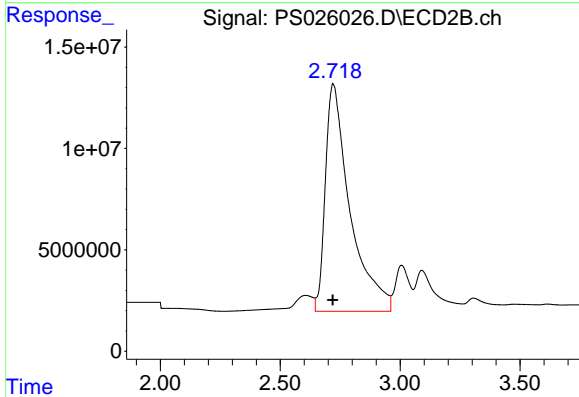




#1 Dalapon

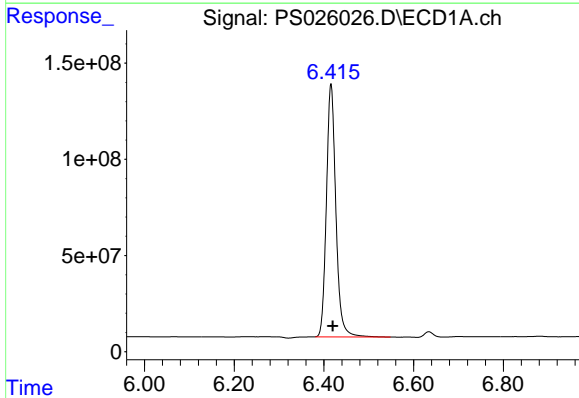
R.T.: 2.668 min  
 Delta R.T.: -0.002 min  
 Response: 2145829206  
 Conc: 480.51 ng/ml

Instrument :  
 ECD\_S  
 ClientSampleId :



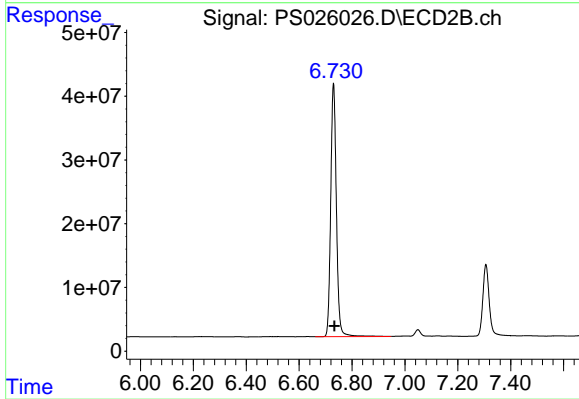
#1 Dalapon

R.T.: 2.719 min  
 Delta R.T.: 0.000 min  
 Response: 800191270  
 Conc: 487.46 ng/ml



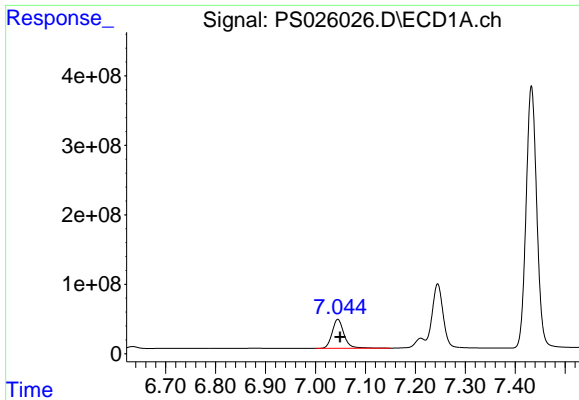
#2 3,5-DICHLOROBENZOIC ACID

R.T.: 6.416 min  
 Delta R.T.: -0.004 min  
 Response: 1921777331  
 Conc: 503.31 ng/ml



#2 3,5-DICHLOROBENZOIC ACID

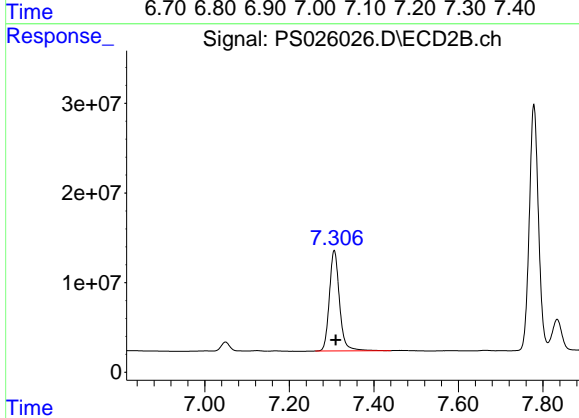
R.T.: 6.730 min  
 Delta R.T.: -0.003 min  
 Response: 592572414  
 Conc: 499.37 ng/ml



#3 4-Nitrophenol

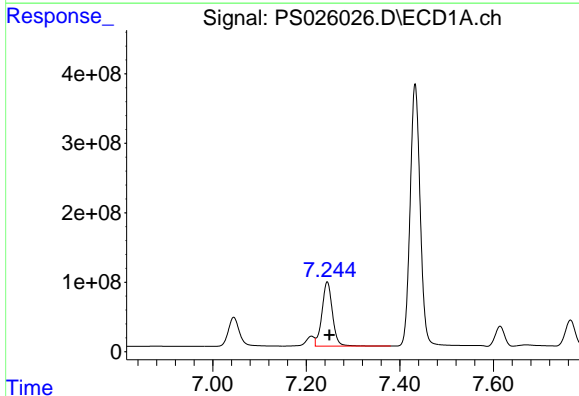
R.T.: 7.045 min  
Delta R.T.: -0.005 min  
Response: 693441182  
Conc: 537.44 ng/ml

Instrument :  
ECD\_S  
ClientSampleId :



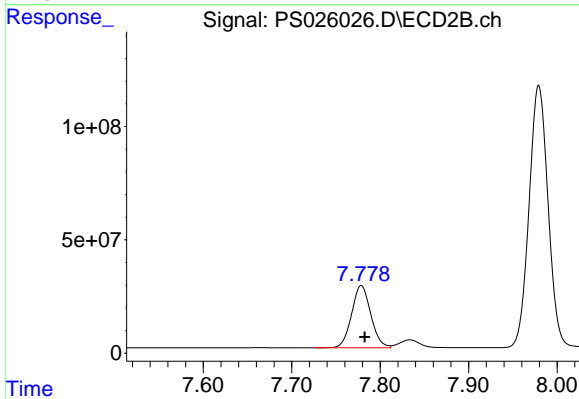
#3 4-Nitrophenol

R.T.: 7.306 min  
Delta R.T.: -0.003 min  
Response: 186698337  
Conc: 545.01 ng/ml



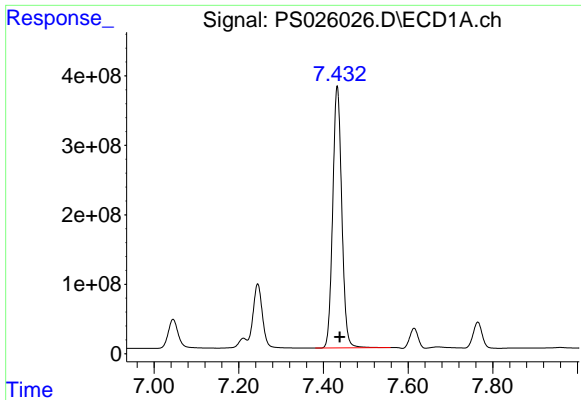
#4 2,4-DCAA

R.T.: 7.245 min  
Delta R.T.: -0.005 min  
Response: 1438594516  
Conc: 553.97 ng/ml



#4 2,4-DCAA

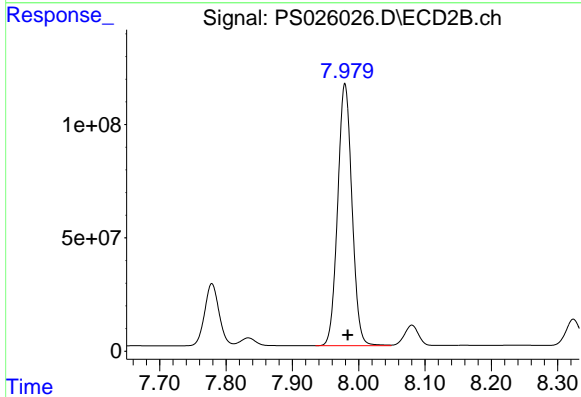
R.T.: 7.779 min  
Delta R.T.: -0.004 min  
Response: 412563357  
Conc: 542.58 ng/ml



#5 DICAMBA

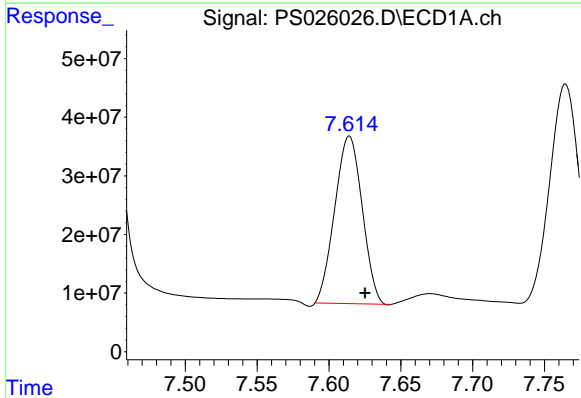
R.T.: 7.433 min  
 Delta R.T.: -0.006 min  
 Response: 5590741860  
 Conc: 510.39 ng/ml

Instrument :  
 ECD\_S  
 ClientSampleId :



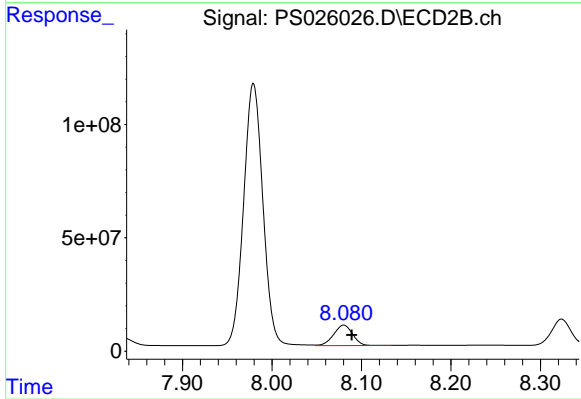
#5 DICAMBA

R.T.: 7.979 min  
 Delta R.T.: -0.004 min  
 Response: 1730364310  
 Conc: 494.42 ng/ml



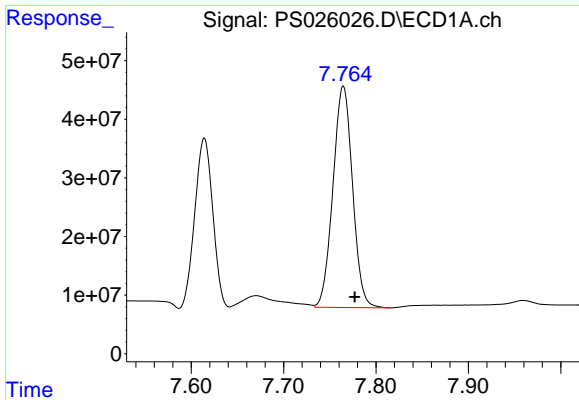
#6 MCPP

R.T.: 7.614 min  
 Delta R.T.: -0.011 min  
 Response: 379166502  
 Conc: 49.50 ug/ml



#6 MCPP

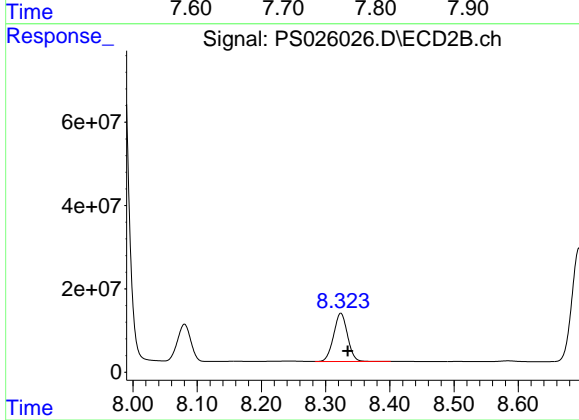
R.T.: 8.080 min  
 Delta R.T.: -0.009 min  
 Response: 133703367  
 Conc: 50.23 ug/ml



#7 MCPA

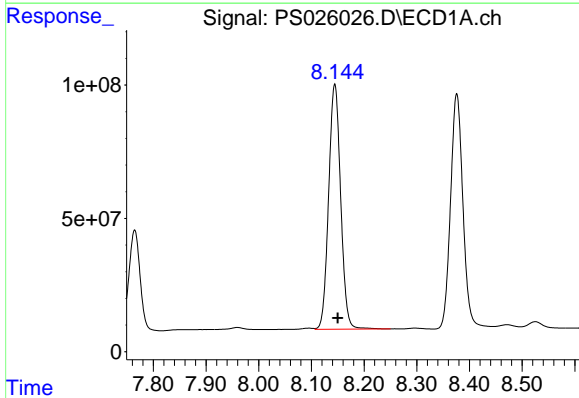
R.T.: 7.765 min  
Delta R.T.: -0.013 min  
Response: 554900256  
Conc: 52.33 ug/ml

Instrument :  
ECD\_S  
ClientSampleId :



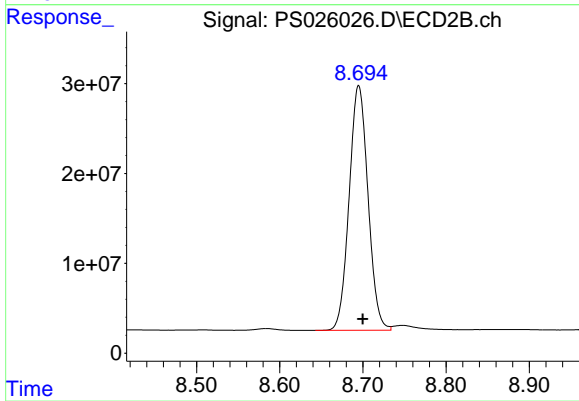
#7 MCPA

R.T.: 8.324 min  
Delta R.T.: -0.011 min  
Response: 175281372  
Conc: 50.98 ug/ml



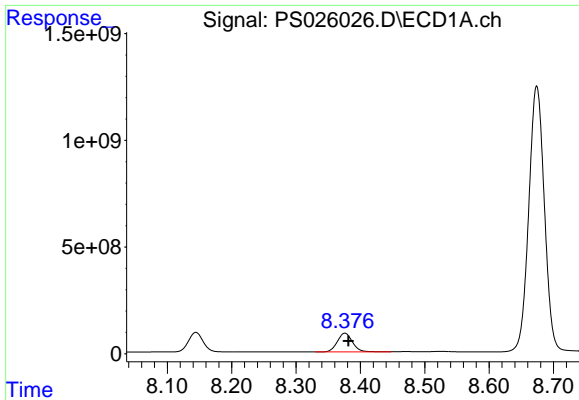
#8 DICHLORPROP

R.T.: 8.144 min  
Delta R.T.: -0.005 min  
Response: 1454947473  
Conc: 520.10 ng/ml



#8 DICHLORPROP

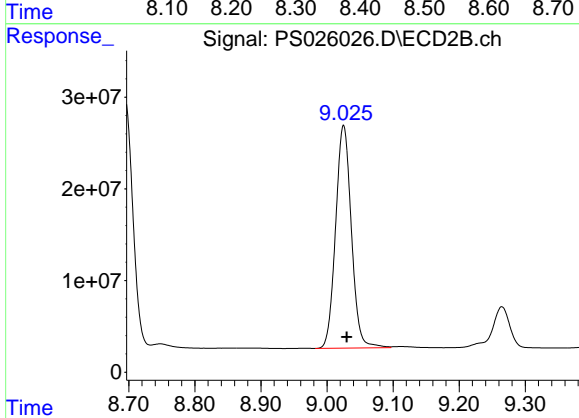
R.T.: 8.695 min  
Delta R.T.: -0.005 min  
Response: 429657873  
Conc: 502.62 ng/ml



#9 2,4-D

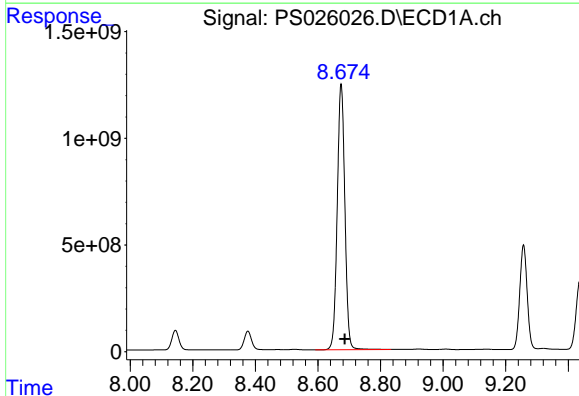
R.T.: 8.376 min  
 Delta R.T.: -0.006 min  
 Response: 1450348390  
 Conc: 540.98 ng/ml

Instrument :  
 ECD\_S  
 ClientSampleId :



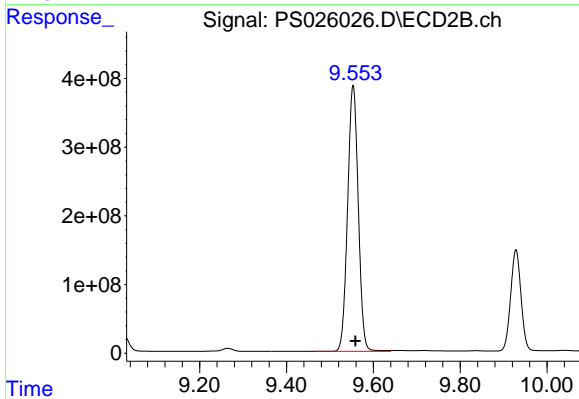
#9 2,4-D

R.T.: 9.025 min  
 Delta R.T.: -0.005 min  
 Response: 402613121  
 Conc: 537.33 ng/ml



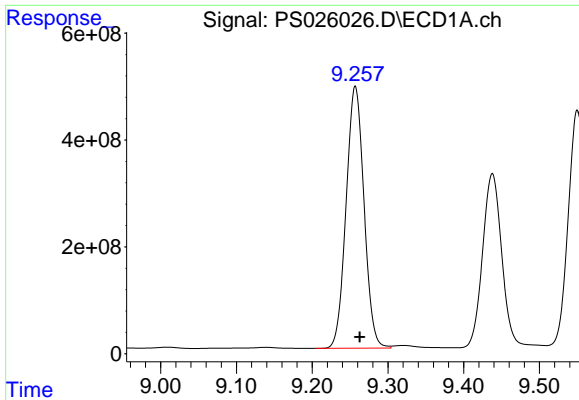
#10 Pentachlorophenol

R.T.: 8.674 min  
 Delta R.T.: -0.012 min  
 Response: 21082236738  
 Conc: 537.74 ng/ml



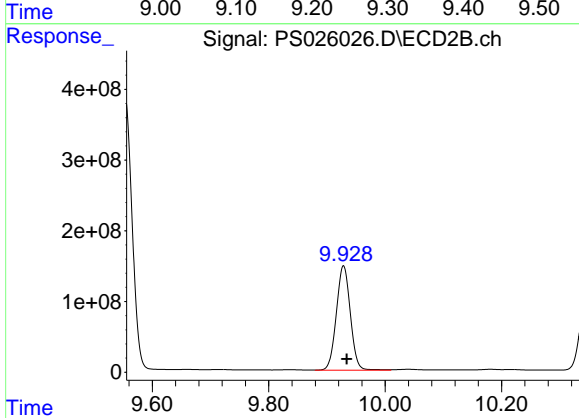
#10 Pentachlorophenol

R.T.: 9.553 min  
 Delta R.T.: -0.005 min  
 Response: 6604679090  
 Conc: 512.17 ng/ml

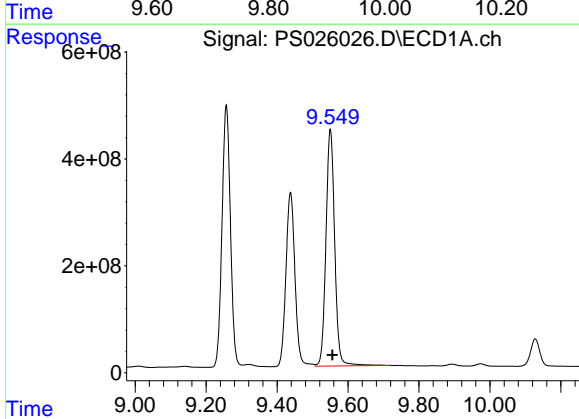


#11 2,4,5-TP (SILVEX)  
 R.T.: 9.257 min  
 Delta R.T.: -0.006 min  
 Response: 8049297323  
 Conc: 535.84 ng/ml

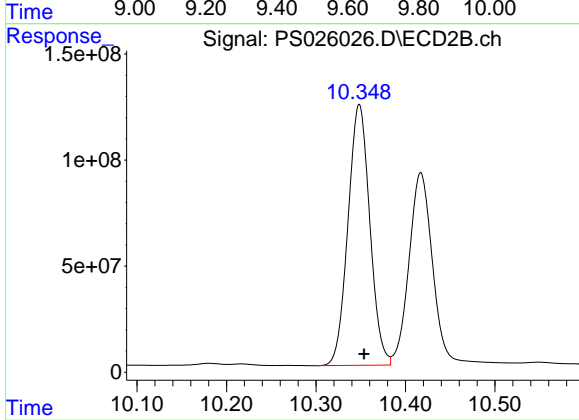
Instrument :  
 ECD\_S  
 ClientSampleId :



#11 2,4,5-TP (SILVEX)  
 R.T.: 9.928 min  
 Delta R.T.: -0.005 min  
 Response: 2464451484  
 Conc: 526.04 ng/ml

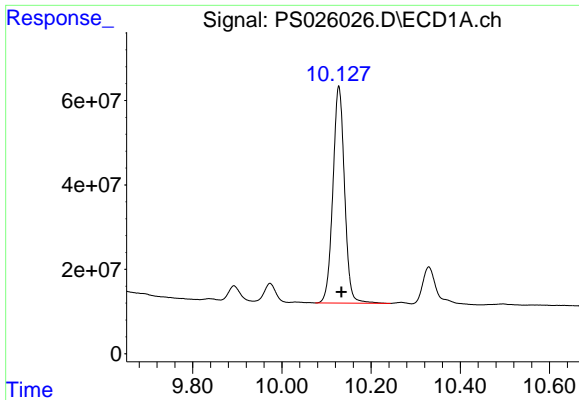


#12 2,4,5-T  
 R.T.: 9.550 min  
 Delta R.T.: -0.005 min  
 Response: 7594139245  
 Conc: 557.11 ng/ml



#12 2,4,5-T  
 R.T.: 10.348 min  
 Delta R.T.: -0.005 min  
 Response: 2083844882  
 Conc: 558.10 ng/ml

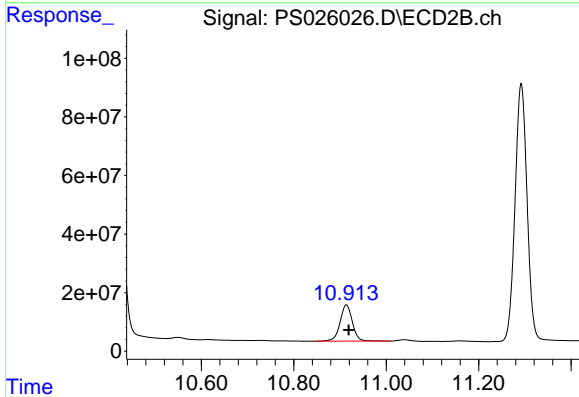




#13 2,4-DB

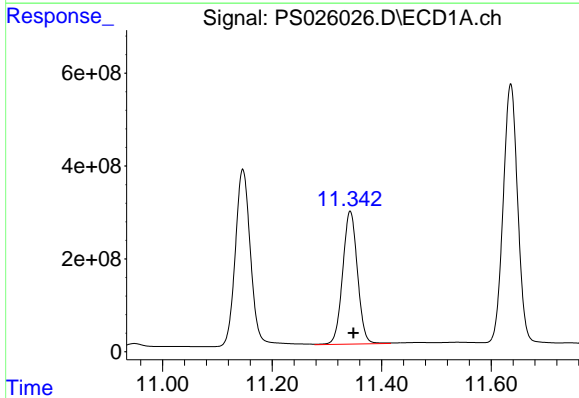
R.T.: 10.128 min  
 Delta R.T.: -0.006 min  
 Response: 931902393  
 Conc: 570.99 ng/ml

Instrument :  
 ECD\_S  
 ClientSampleId :



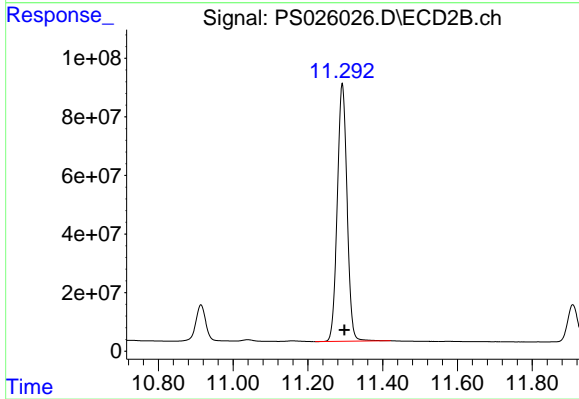
#13 2,4-DB

R.T.: 10.914 min  
 Delta R.T.: -0.006 min  
 Response: 228389587  
 Conc: 595.90 ng/ml



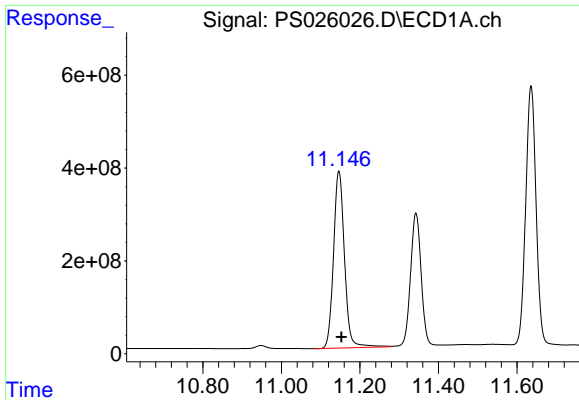
#14 DINOSEB

R.T.: 11.343 min  
 Delta R.T.: -0.006 min  
 Response: 5373648080  
 Conc: 498.85 ng/ml



#14 DINOSEB

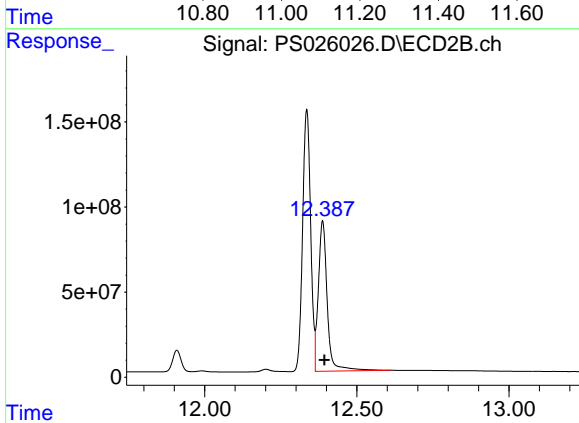
R.T.: 11.292 min  
 Delta R.T.: -0.006 min  
 Response: 1593573154  
 Conc: 507.79 ng/ml



#15 Picloram

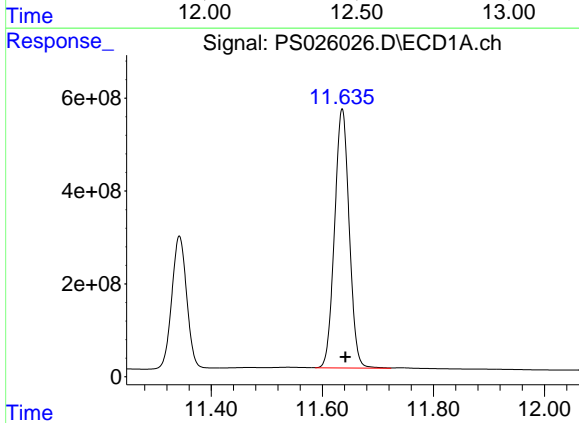
R.T.: 11.146 min  
 Delta R.T.: -0.007 min  
 Response: 7377589768  
 Conc: 512.56 ng/ml

Instrument :  
 ECD\_S  
 ClientSampleId :



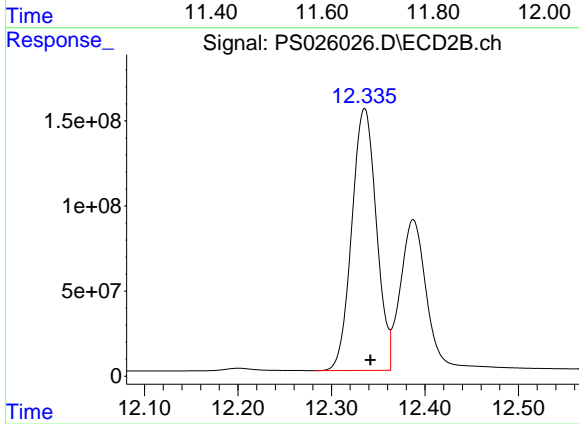
#15 Picloram

R.T.: 12.387 min  
 Delta R.T.: -0.007 min  
 Response: 1787575149  
 Conc: 510.19 ng/ml



#16 DCPA

R.T.: 11.636 min  
 Delta R.T.: -0.006 min  
 Response: 10229499723  
 Conc: 544.95 ng/ml



#16 DCPA

R.T.: 12.335 min  
 Delta R.T.: -0.006 min  
 Response: 2812250330  
 Conc: 542.06 ng/ml