

Data Path : Z:\pestpcbsrv\HPCHEM1\ECD_S\Data\PS022420\
 Data File : PS008988.D
 Signal(s) : Signal #1: ECD1A.ch Signal #2: ECD2B.ch
 Acq On : 25 Feb 2020 03:36
 Operator : DD\AJ
 Sample : HSTDCCC750
 Misc :
 ALS Vial : 3 Sample Multiplier: 1

Instrument :
 ECD_S
 ClientSampleId :
 HSTDCCC750

Integration File signal 1: autoint1.e
 Integration File signal 2: autoint2.e
 Quant Time: Feb 25 04:40:10 2020
 Quant Method : Z:\pestpcbsrv\HPCHEM1\ECD_S\Method\PS022020.M
 Quant Title : 8080.M
 QLast Update : Thu Feb 20 11:30:26 2020
 Response via : Initial Calibration
 Integrator: ChemStation

Volume Inj. : 2 µl
 Signal #1 Phase : Rtx-CLPesticides Signal #2 Phase: Rtx-CLPesticides2
 Signal #1 Info : 30M x 0.32mm x0.5 Signal #2 Info : 30M x 0.32mm x 0.25µm

Compound	RT#1	RT#2	Resp#1	Resp#2	ng/ml	ng/ml
System Monitoring Compounds						
4) S 2,4-DCAA	7.247	6.940	1644.7E6	754.0E6	752.195	782.471
Target Compounds						
1) T Dalapon	3.049	2.631	1968.9E6	934.1E6	658.101	638.845
2) T 3,5-DICHL...	6.454	6.083	2022.3E6	1027.5E6	706.189	704.117
3) T 4-Nitroph...	7.076	6.541	764.6E6	411.7E6	714.672	712.175
5) T DICAMBA	7.440	7.111	5893.4E6	3001.0E6	725.446	725.006
6) T MCPP	7.611	7.209	446.8E6	229.4E6	74.290	75.679
7) T MCPA	7.761	7.425	614.3E6	318.1E6	76.371	71.909
8) T DICHLORPROP	8.134	7.738	1407.4E6	727.3E6	724.507	725.876
9) T 2,4-D	8.363	8.032	1527.1E6	864.5E6	736.876	729.693
10) T Pentachlo...	8.677	8.466	20391.5E6	10074.5E6	702.650	709.099
11) T 2,4,5-TP ...	9.227	8.827	7929.6E6	3957.7E6	721.162	730.613
12) T 2,4,5-T	9.511	9.206	7771.9E6	3971.6E6	726.881	733.712
13) T 2,4-DB	10.064	9.715	1086.8E6	523.4E6	753.169	745.115
14) T DINOSEB	11.231	10.050	5873.6E6	2807.6E6	694.252	710.065
15) T Picloram	11.044	11.030	8755.9E6	4624.4E6	639.538	636.399
16) T DCPA	11.496	10.982	9811.3E6	5074.2E6	714.029	733.336

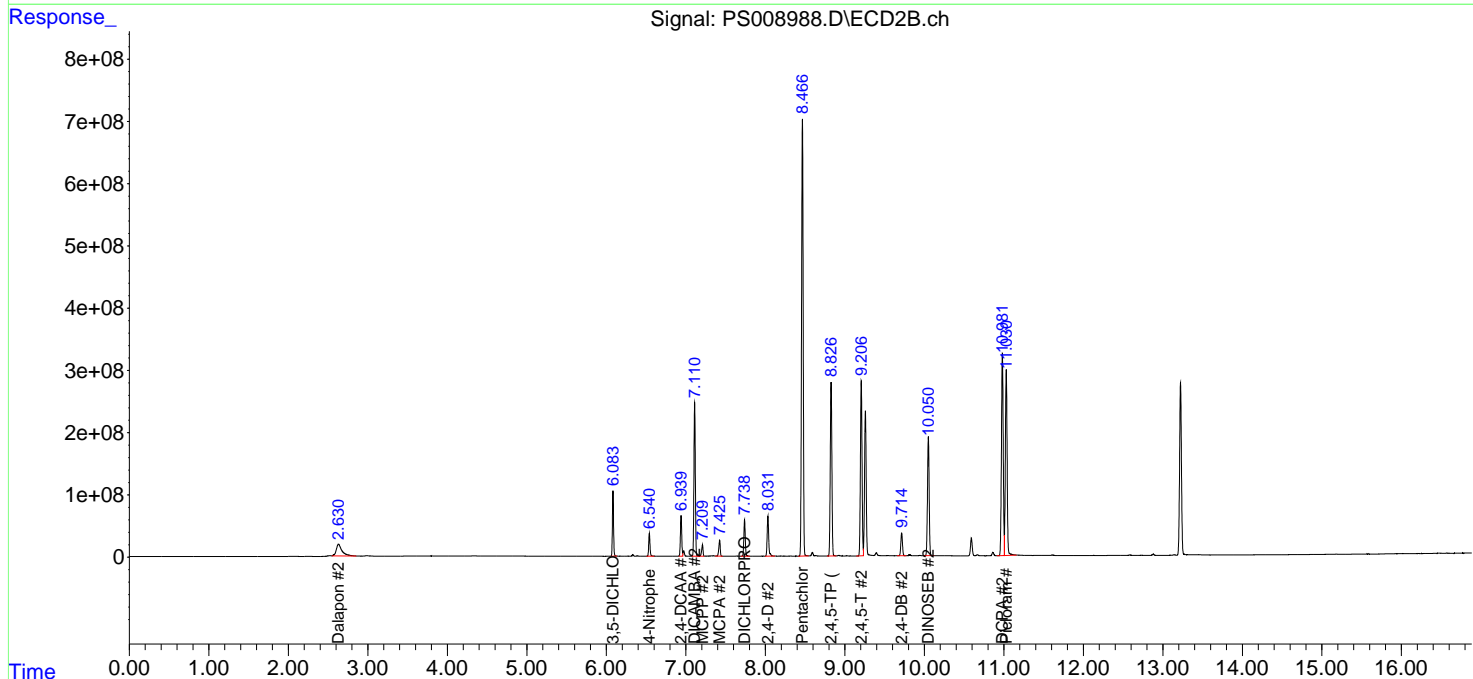
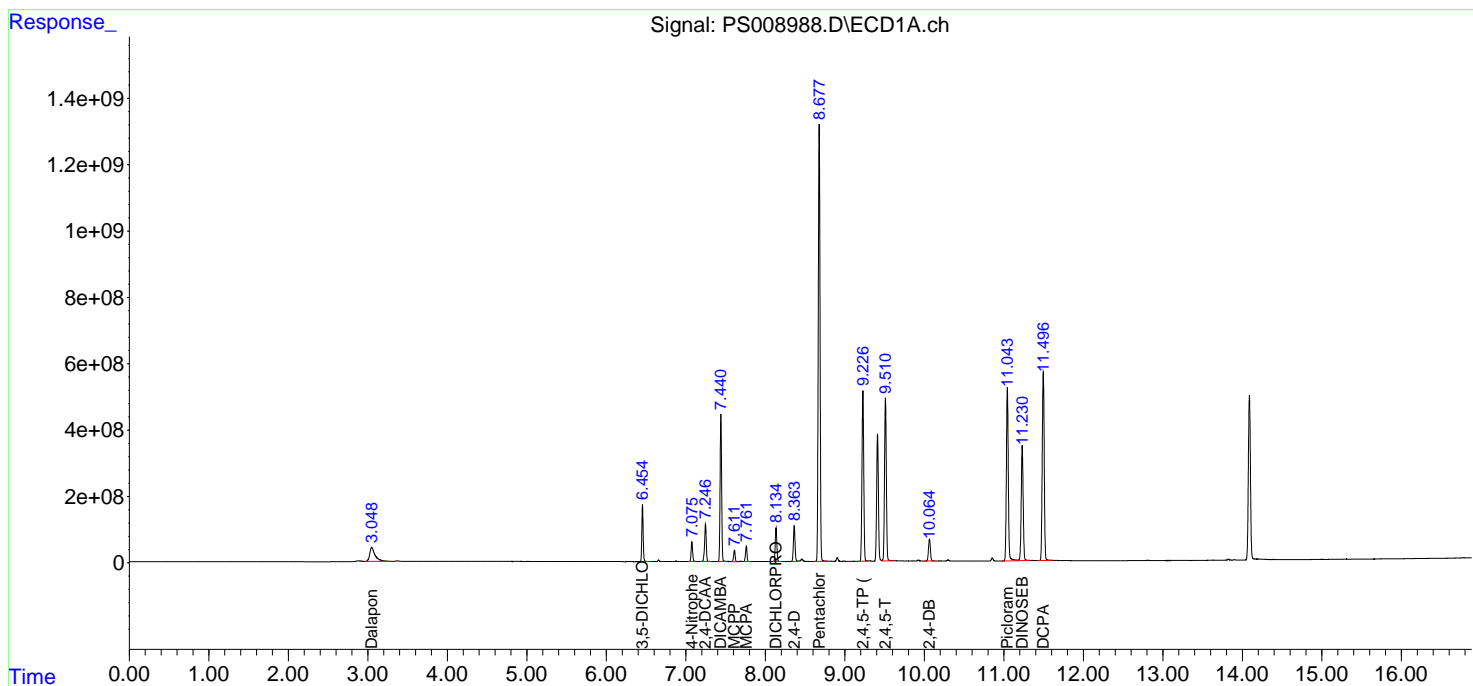
(f)=RT Delta > 1/2 Window (#)=Amounts differ by > 25% (m)=manual int.

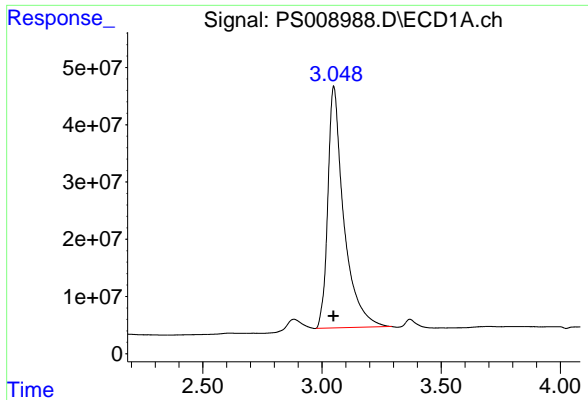
Data Path : Z:\pestpcbsrv\HPCHEM1\ECD_S\Data\PS022420\
 Data File : PS008988.D
 Signal(s) : Signal #1: ECD1A.ch Signal #2: ECD2B.ch
 Acq On : 25 Feb 2020 03:36
 Operator : DD\AJ
 Sample : HSTDCCC750
 Misc :
 ALS Vial : 3 Sample Multiplier: 1

Instrument :
 ECD_S
 ClientSampleId :
 HSTDCCC750

Integration File signal 1: autoint1.e
 Integration File signal 2: autoint2.e
 Quant Time: Feb 25 04:40:10 2020
 Quant Method : Z:\pestpcbsrv\HPCHEM1\ECD_S\Method\PS022020.M
 Quant Title : 8080.M
 QLast Update : Thu Feb 20 11:30:26 2020
 Response via : Initial Calibration
 Integrator: ChemStation

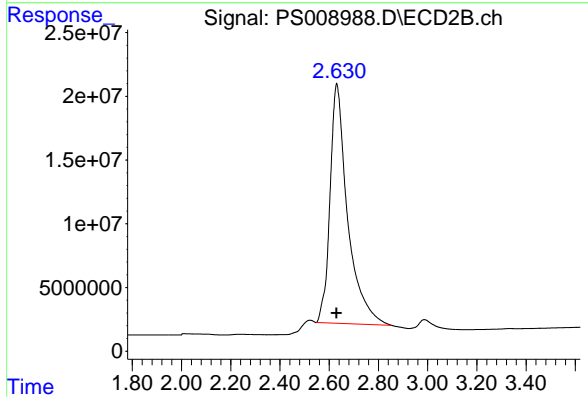
Volume Inj. : 2 µl
 Signal #1 Phase : Rtx-CLPesticides Signal #2 Phase: Rtx-CLPesticides2
 Signal #1 Info : 30M x 0.32mm x0.5 Signal #2 Info : 30M x 0.32mm x 0.25µm



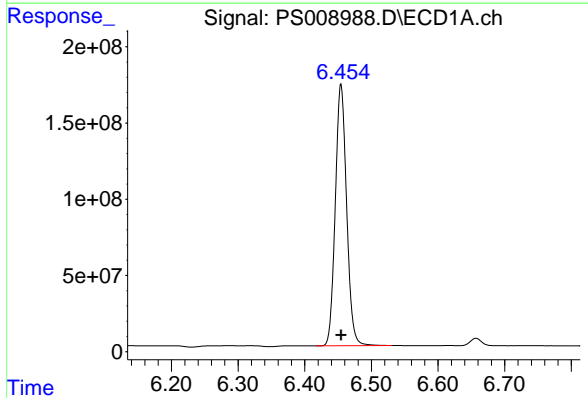


#1 Dalapon
 R.T.: 3.049 min
 Delta R.T.: 0.000 min
 Response: 1968889207
 Conc: 658.10 ng/ml

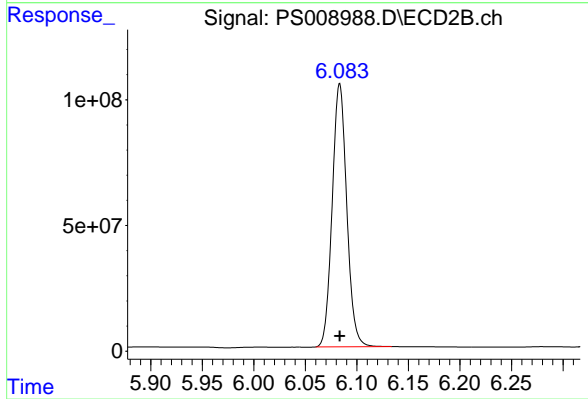
Instrument :
 ECD_S
 ClientSampleId :
 HSTDCCC750



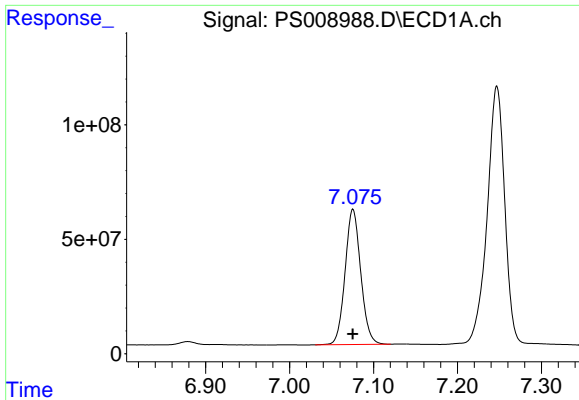
#1 Dalapon
 R.T.: 2.631 min
 Delta R.T.: 0.000 min
 Response: 934131676
 Conc: 638.84 ng/ml



#2 3,5-DICHLOROBENZOIC ACID
 R.T.: 6.454 min
 Delta R.T.: 0.000 min
 Response: 2022261200
 Conc: 706.19 ng/ml

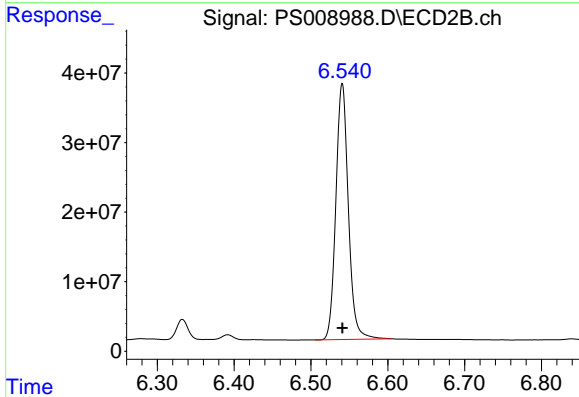


#2 3,5-DICHLOROBENZOIC ACID
 R.T.: 6.083 min
 Delta R.T.: 0.000 min
 Response: 1027497134
 Conc: 704.12 ng/ml

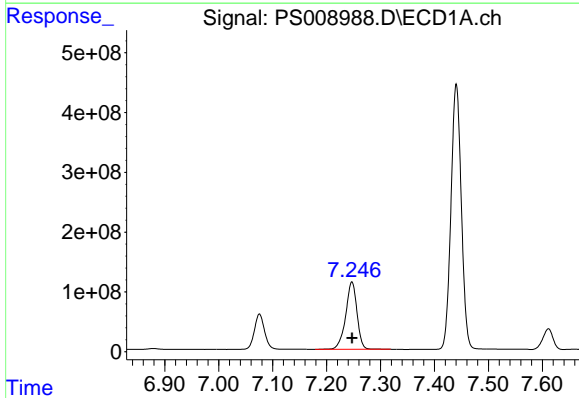


#3 4-Nitrophenol
 R.T.: 7.076 min
 Delta R.T.: 0.000 min
 Response: 764591061
 Conc: 714.67 ng/ml

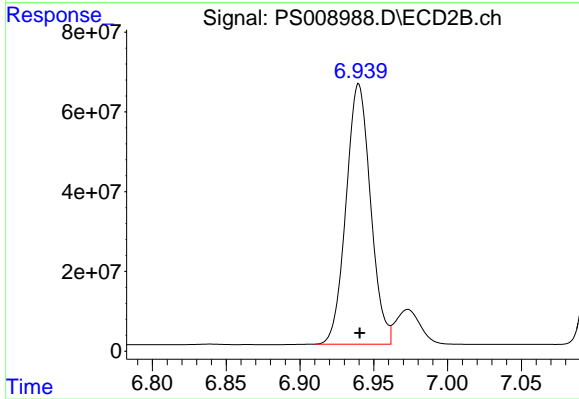
Instrument :
 ECD_S
 ClientSampleId :
 HSTDCCC750



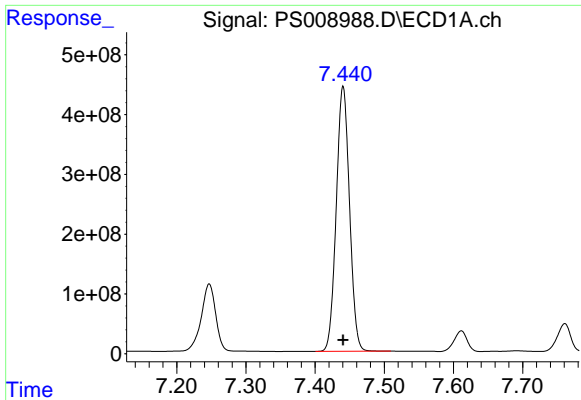
#3 4-Nitrophenol
 R.T.: 6.541 min
 Delta R.T.: 0.000 min
 Response: 411663579
 Conc: 712.17 ng/ml



#4 2,4-DCAA
 R.T.: 7.247 min
 Delta R.T.: 0.000 min
 Response: 1644744670
 Conc: 752.20 ng/ml

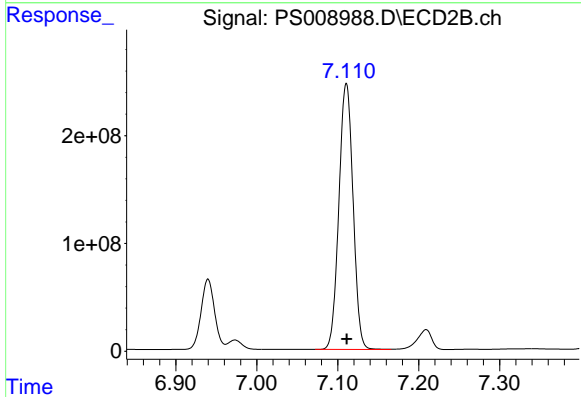


#4 2,4-DCAA
 R.T.: 6.940 min
 Delta R.T.: 0.000 min
 Response: 753954482
 Conc: 782.47 ng/ml

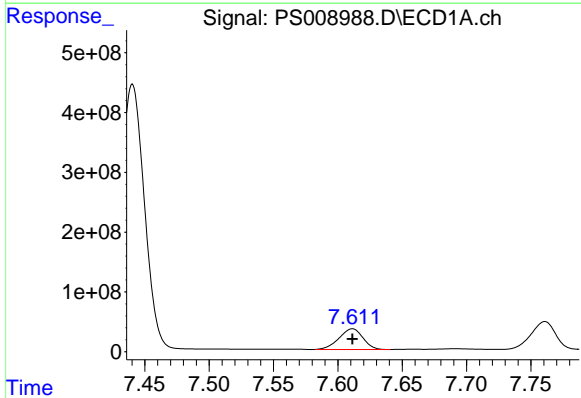


#5 DICAMBA
 R.T.: 7.440 min
 Delta R.T.: 0.000 min
 Response: 5893401747
 Conc: 725.45 ng/ml

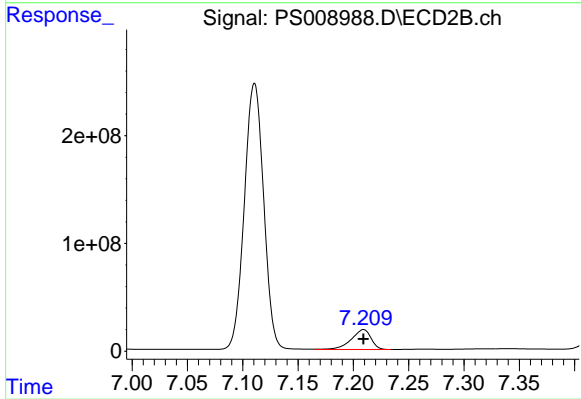
Instrument :
 ECD_S
 ClientSampleId :
 HSTDCCC750



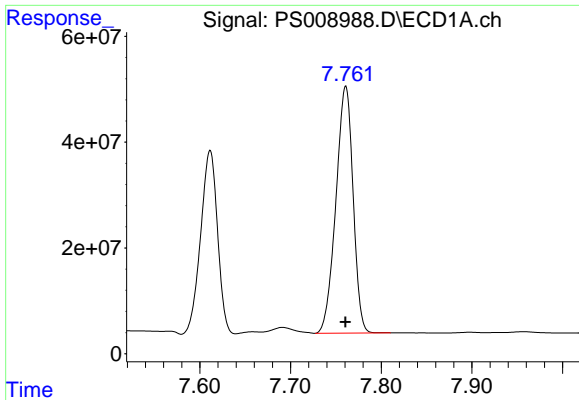
#5 DICAMBA
 R.T.: 7.111 min
 Delta R.T.: 0.000 min
 Response: 3001039700
 Conc: 725.01 ng/ml



#6 MCP
 R.T.: 7.611 min
 Delta R.T.: 0.000 min
 Response: 446816536
 Conc: 74.29 ug/ml

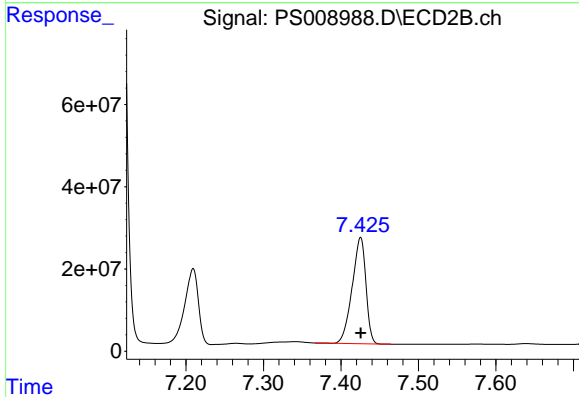


#6 MCP
 R.T.: 7.209 min
 Delta R.T.: 0.000 min
 Response: 229415002
 Conc: 75.68 ug/ml

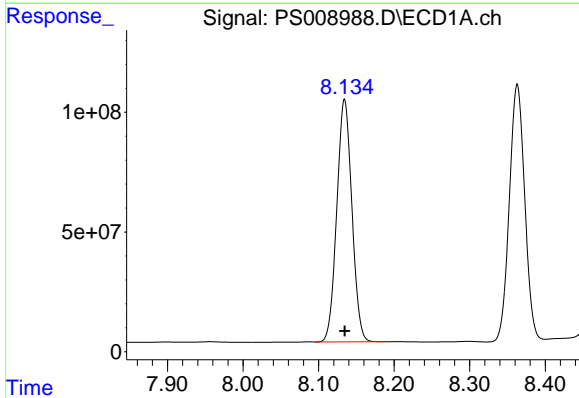


#7 MCPA
 R.T.: 7.761 min
 Delta R.T.: 0.000 min
 Response: 614326175
 Conc: 76.37 ug/ml

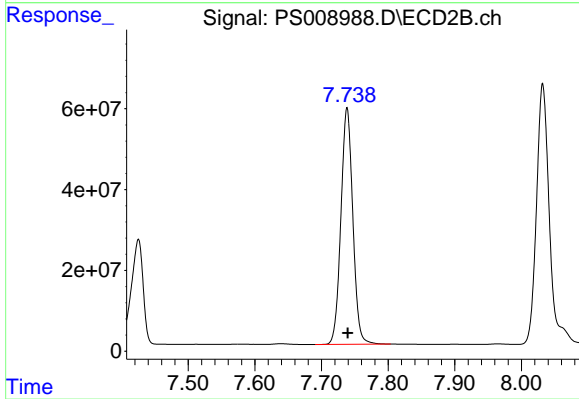
Instrument :
 ECD_S
 ClientSampleId :
 HSTDCCC750



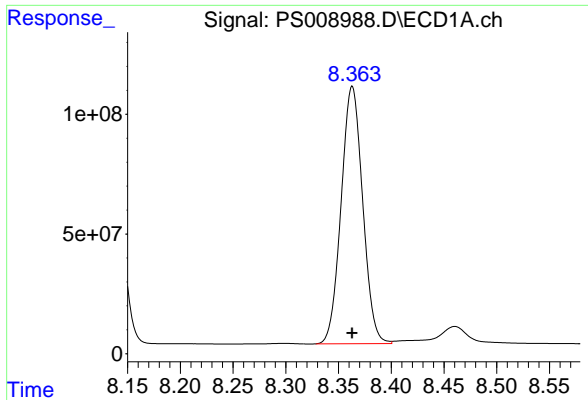
#7 MCPA
 R.T.: 7.425 min
 Delta R.T.: 0.000 min
 Response: 318143545
 Conc: 71.91 ug/ml



#8 DICHLORPROP
 R.T.: 8.134 min
 Delta R.T.: 0.000 min
 Response: 1407362767
 Conc: 724.51 ng/ml



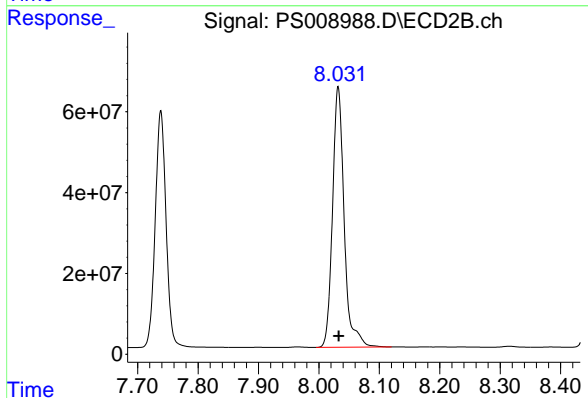
#8 DICHLORPROP
 R.T.: 7.738 min
 Delta R.T.: 0.000 min
 Response: 727278210
 Conc: 725.88 ng/ml



#9 2,4-D

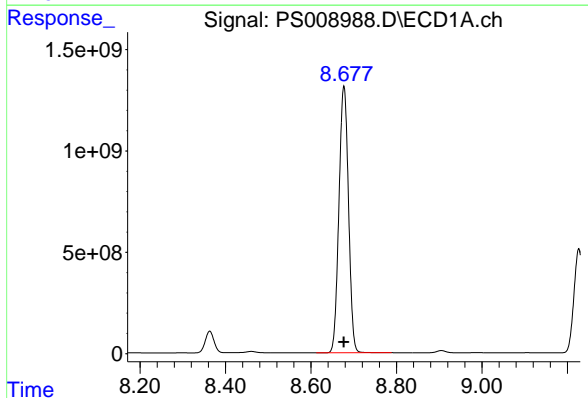
R.T.: 8.363 min
Delta R.T.: 0.000 min
Response: 1527050567
Conc: 736.88 ng/ml

Instrument :
ECD_S
ClientSampleId :
HSTDCCC750



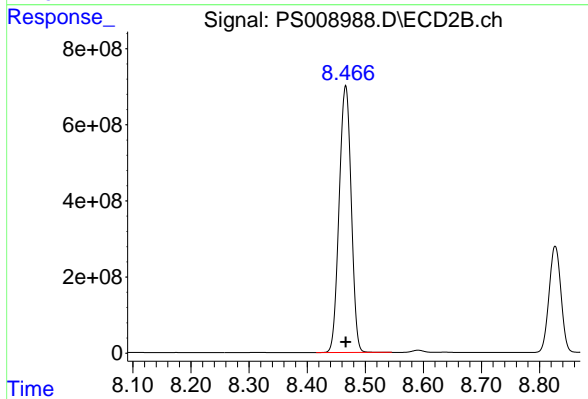
#9 2,4-D

R.T.: 8.032 min
Delta R.T.: -0.001 min
Response: 864541421
Conc: 729.69 ng/ml



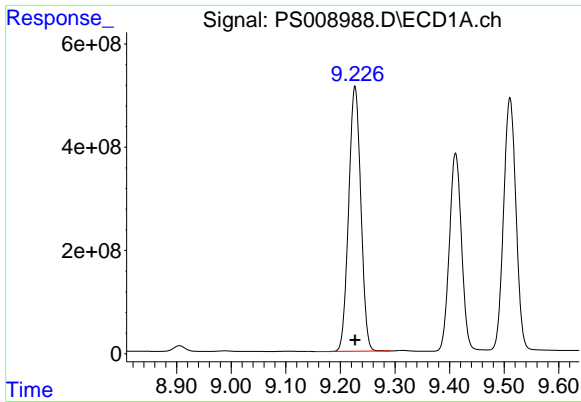
#10 Pentachlorophenol

R.T.: 8.677 min
Delta R.T.: 0.000 min
Response: 20391509168
Conc: 702.65 ng/ml



#10 Pentachlorophenol

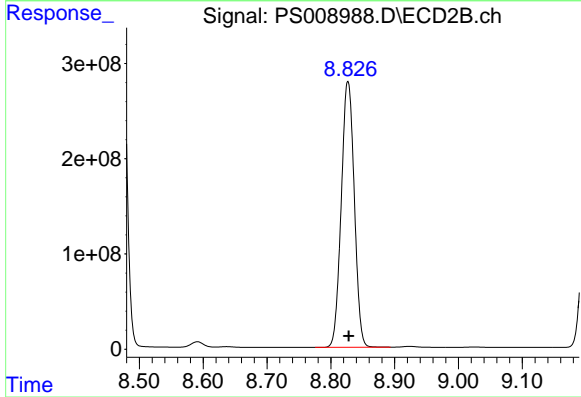
R.T.: 8.466 min
Delta R.T.: 0.000 min
Response: 10074450846
Conc: 709.10 ng/ml



#11 2,4,5-TP (SILVEX)

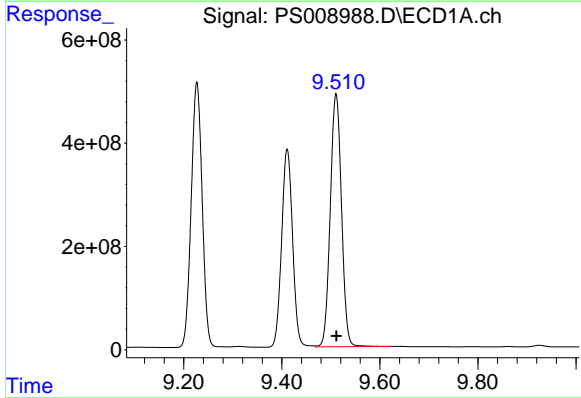
R.T.: 9.227 min
 Delta R.T.: 0.000 min
 Response: 7929645834
 Conc: 721.16 ng/ml

Instrument :
 ECD_S
 ClientSampleId :
 HSTDCCC750



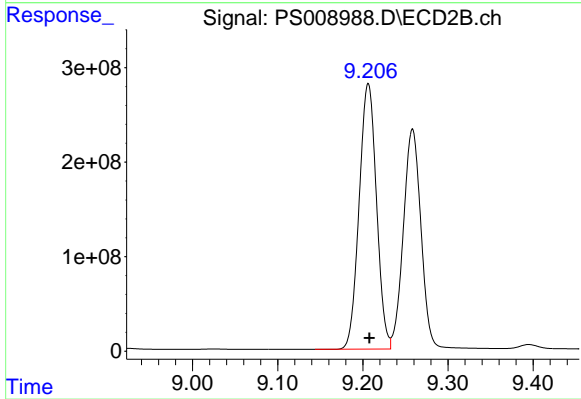
#11 2,4,5-TP (SILVEX)

R.T.: 8.827 min
 Delta R.T.: -0.001 min
 Response: 3957670328
 Conc: 730.61 ng/ml



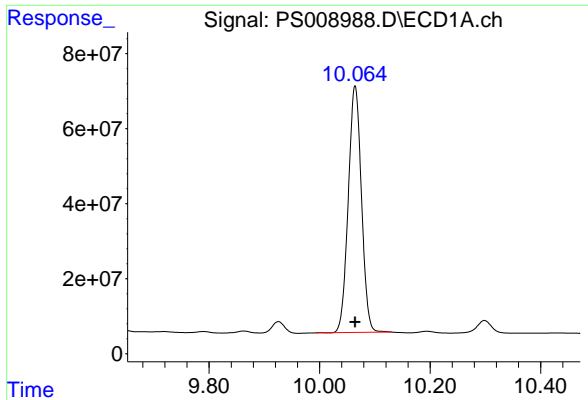
#12 2,4,5-T

R.T.: 9.511 min
 Delta R.T.: 0.000 min
 Response: 7771867917
 Conc: 726.88 ng/ml



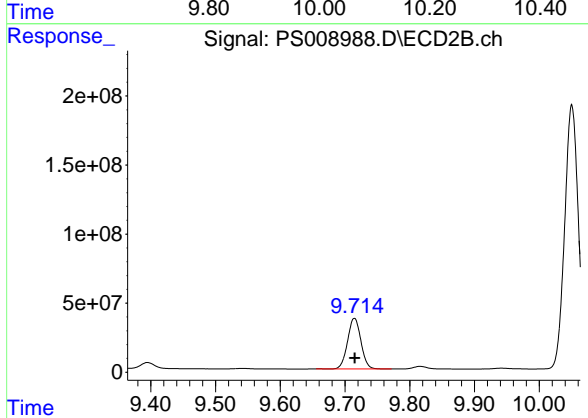
#12 2,4,5-T

R.T.: 9.206 min
 Delta R.T.: -0.001 min
 Response: 3971647735
 Conc: 733.71 ng/ml

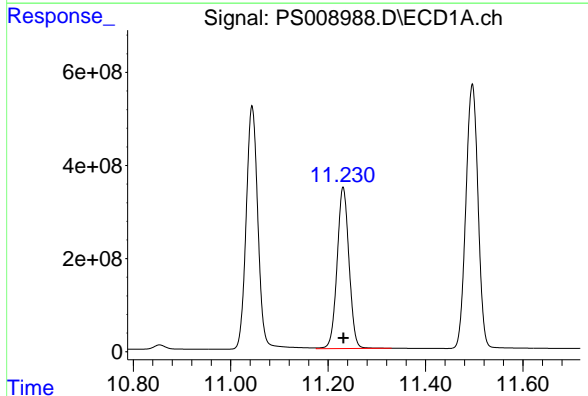


#13 2,4-DB
 R.T.: 10.064 min
 Delta R.T.: 0.000 min
 Response: 1086849697
 Conc: 753.17 ng/ml

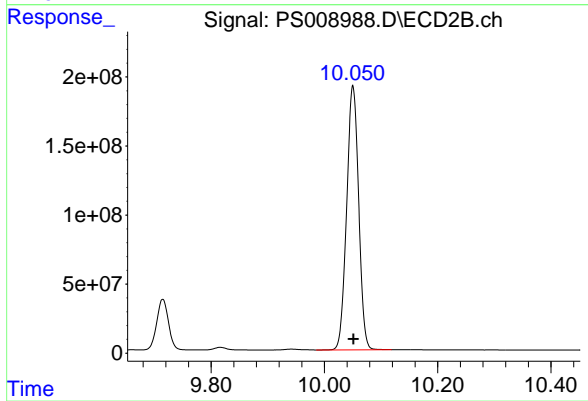
Instrument :
 ECD_S
 ClientSampleId :
 HSTDCCC750



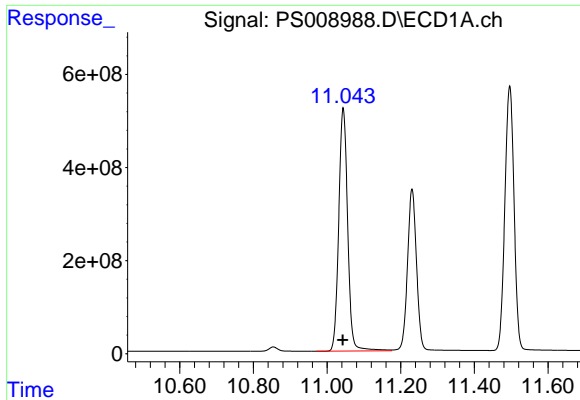
#13 2,4-DB
 R.T.: 9.715 min
 Delta R.T.: 0.000 min
 Response: 523396571
 Conc: 745.11 ng/ml



#14 DINOSEB
 R.T.: 11.231 min
 Delta R.T.: 0.000 min
 Response: 5873593572
 Conc: 694.25 ng/ml

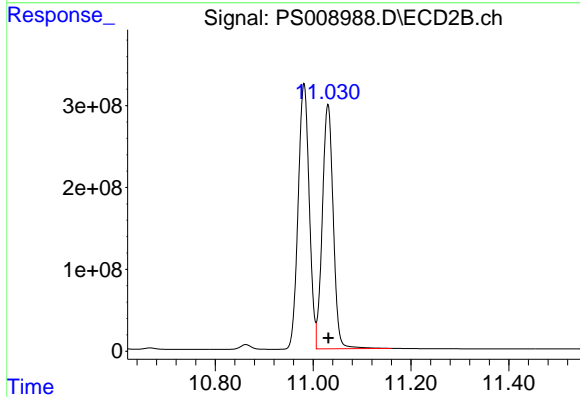


#14 DINOSEB
 R.T.: 10.050 min
 Delta R.T.: -0.001 min
 Response: 2807640951
 Conc: 710.07 ng/ml

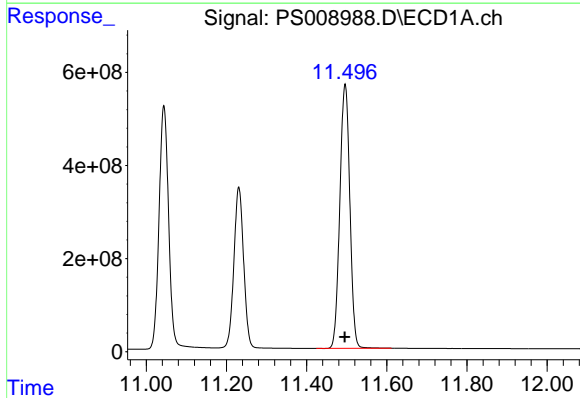


#15 Picloram
 R.T.: 11.044 min
 Delta R.T.: 0.000 min
 Response: 8755896789
 Conc: 639.54 ng/ml

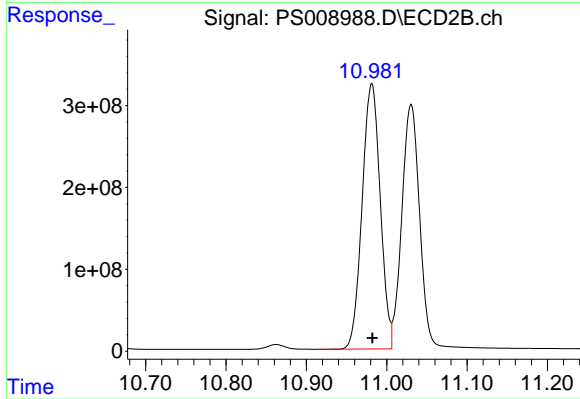
Instrument :
 ECD_S
 ClientSampleId :
 HSTDCCC750



#15 Picloram
 R.T.: 11.030 min
 Delta R.T.: 0.000 min
 Response: 4624406628
 Conc: 636.40 ng/ml



#16 DCPA
 R.T.: 11.496 min
 Delta R.T.: 0.001 min
 Response: 9811326213
 Conc: 714.03 ng/ml



#16 DCPA
 R.T.: 10.982 min
 Delta R.T.: 0.000 min
 Response: 5074206121
 Conc: 733.34 ng/ml