

Data Path : Z:\pestpcbsrv\HPCHEM1\ECD_S\Data\PS022724\
 Data File : PS026040.D
 Signal(s) : Signal #1: ECD1A.ch Signal #2: ECD2B.ch
 Acq On : 27 Feb 2024 13:04
 Operator : AR\AJ
 Sample : P1564-03
 Misc :
 ALS Vial : 11 Sample Multiplier: 1

Instrument :
 ECD_S
 ClientSampleId :
 LKWD-BACKFILL-10

Integration File signal 1: autoint1.e
 Integration File signal 2: autoint2.e
 Quant Time: Feb 28 03:16:20 2024
 Quant Method : Z:\pestpcbsrv\HPCHEM1\ECD_S\Method\PS022224.M
 Quant Title : 8080.M
 QLast Update : Thu Feb 22 12:24:27 2024
 Response via : Initial Calibration
 Integrator: ChemStation

Volume Inj. : 2 µl
 Signal #1 Phase : Rtx-CLPesticides Signal #2 Phase: Rtx-CLPesticides2
 Signal #1 Info : 30M x 0.32mm x0.5 Signal #2 Info : 30M x 0.32mm x 0.25µm

Compound	RT#1	RT#2	Resp#1	Resp#2	ng/ml	ng/ml

System Monitoring Compounds						
4) S 2,4-DCAA	7.240	7.774	947.9E6	197.6E6	365.025	259.861 #
Target Compounds						
1) T Dalapon	2.633	2.682	415.2E6	209.1E6	92.973	127.366 #
2) T 3,5-DICHL...	6.433	6.733	4250498	3577577	1.113	3.015 #
3) T 4-Nitroph...	7.051	7.340	38127510	11721805	29.550	34.218
5) T DICAMBA	7.467	7.969	19358890	2196295	1.767	<MDL #
6) T MCPP	7.665	8.074	296.6E6	6131730	38.727	2.304 #
7) T MCPA	7.760	8.320	41691635	21396308	3.932	6.223 #
8) T DICHLORPROP	8.178	8.663	33698789	6917646	12.046	8.092 #
9) T 2,4-D	8.384	9.009	30544373	10754179	11.393	14.353 #
10) T Pentachlo...	8.665	9.546	27219312	11702375	<MDL	<MDL #
11) T 2,4,5-TP ...	9.262	9.889f	9039698	329.6E6	<MDL	70.362 #
12) T 2,4,5-T	9.511f	10.369	6402099	31681568	<MDL	8.485 #
13) T 2,4-DB	10.154	10.935	252.6E6	24878428	154.772	64.912 #
14) T DINOSEB	11.403f	11.289	13820232	43543651	1.283	13.875 #
15) T Picloram	11.124	12.377	47513046	6272891	3.301	1.790 #
16) T DCPA	0.000	12.328	0	12695237	N.D.	2.447

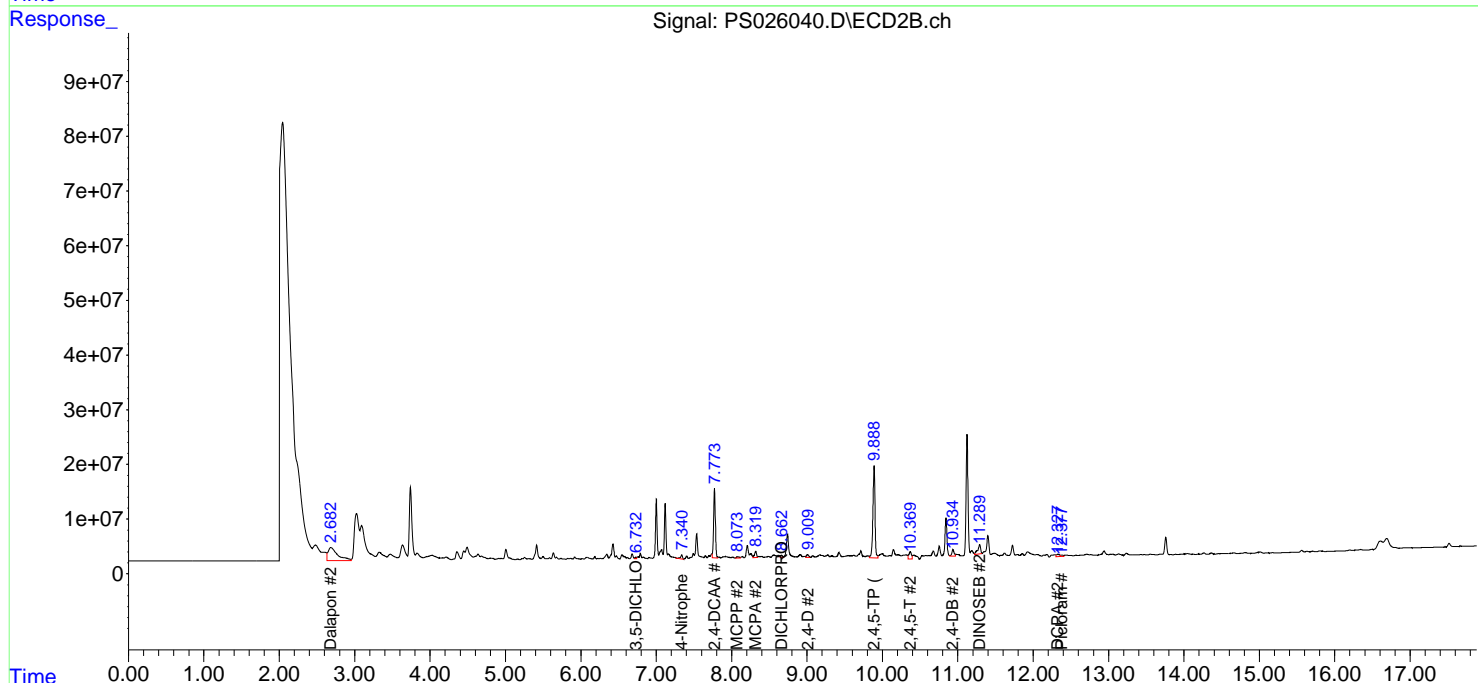
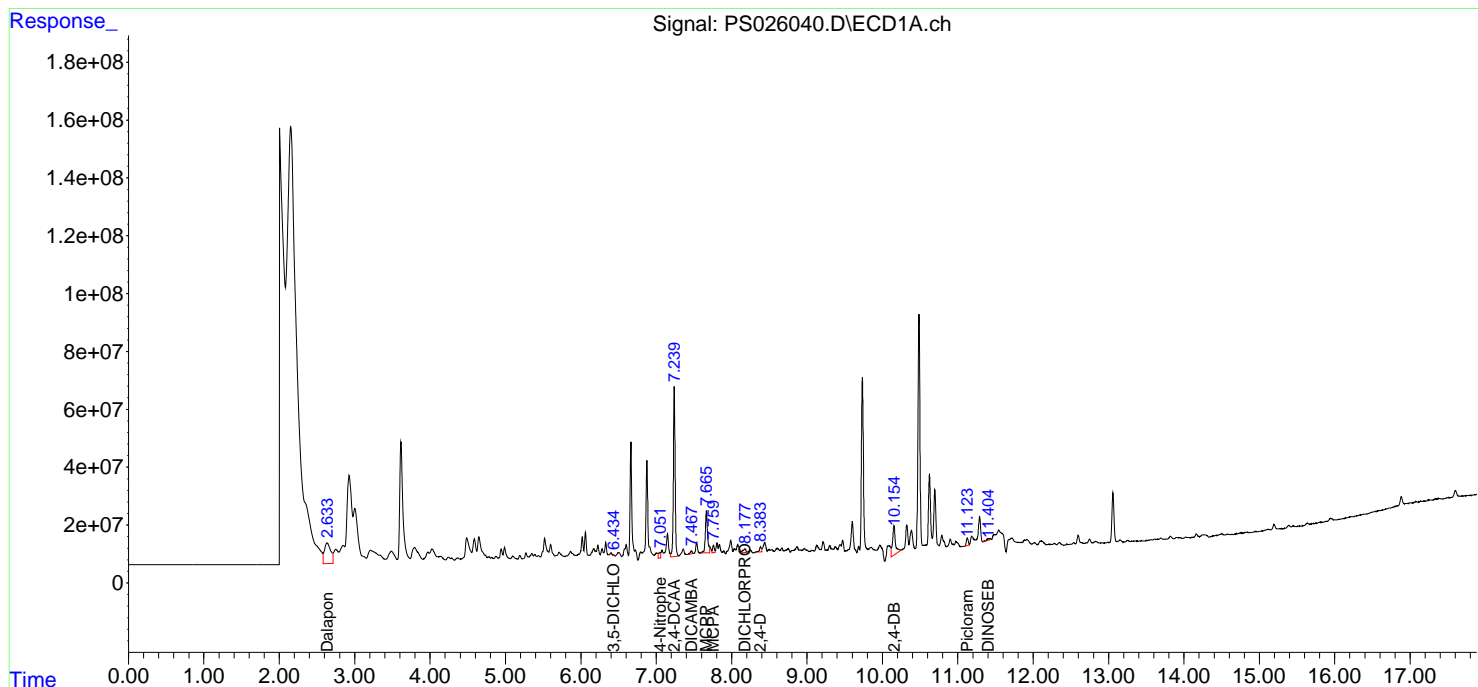
(f)=RT Delta > 1/2 Window (#)=Amounts differ by > 25% (m)=manual int.

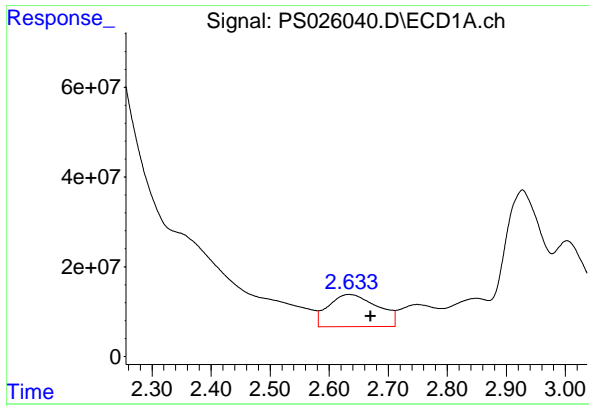
Data Path : Z:\pestpcbsrv\HPCHEM1\ECD_S\Data\PS022724\
 Data File : PS026040.D
 Signal(s) : Signal #1: ECD1A.ch Signal #2: ECD2B.ch
 Acq On : 27 Feb 2024 13:04
 Operator : AR\AJ
 Sample : P1564-03
 Misc :
 ALS Vial : 11 Sample Multiplier: 1

Instrument :
 ECD_S
 ClientSampleId :
 LKWD-BACKFILL-10

Integration File signal 1: autoint1.e
 Integration File signal 2: autoint2.e
 Quant Time: Feb 28 03:16:20 2024
 Quant Method : Z:\pestpcbsrv\HPCHEM1\ECD_S\Method\PS022224.M
 Quant Title : 8080.M
 QLast Update : Thu Feb 22 12:24:27 2024
 Response via : Initial Calibration
 Integrator: ChemStation

Volume Inj. : 2 µl
 Signal #1 Phase : Rtx-CLPesticides Signal #2 Phase: Rtx-CLPesticides2
 Signal #1 Info : 30M x 0.32mm x 0.5 Signal #2 Info : 30M x 0.32mm x 0.25µm

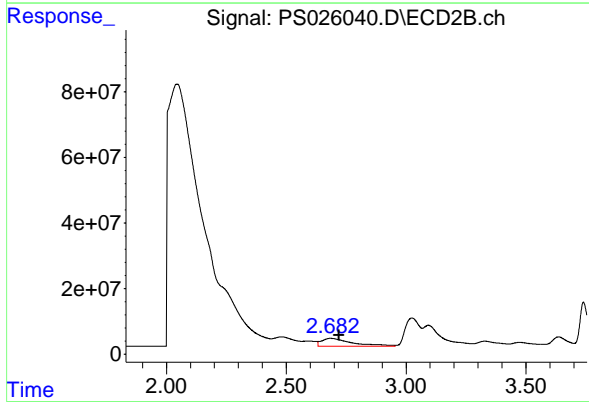




#1 Dalapon

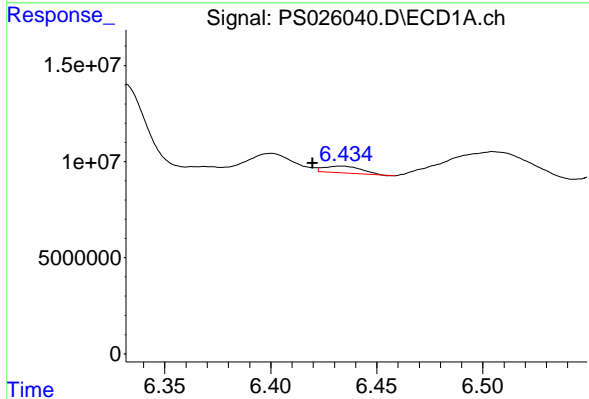
R.T.: 2.633 min
 Delta R.T.: -0.037 min
 Response: 415188964
 Conc: 92.97 ng/ml

Instrument :
 ECD_S
 ClientSampleId :
 LKWD-BACKFILL-10



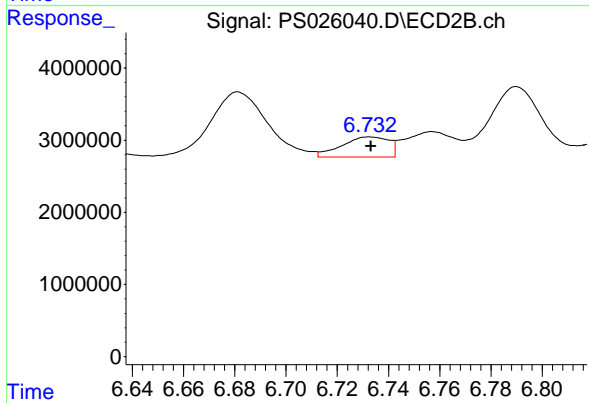
#1 Dalapon

R.T.: 2.682 min
 Delta R.T.: -0.038 min
 Response: 209080356
 Conc: 127.37 ng/ml



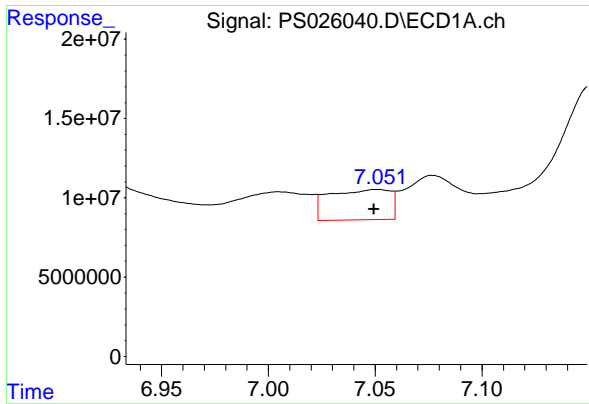
#2 3,5-DICHLOROBENZOIC ACID

R.T.: 6.433 min
 Delta R.T.: 0.013 min
 Response: 4250498
 Conc: 1.11 ng/ml



#2 3,5-DICHLOROBENZOIC ACID

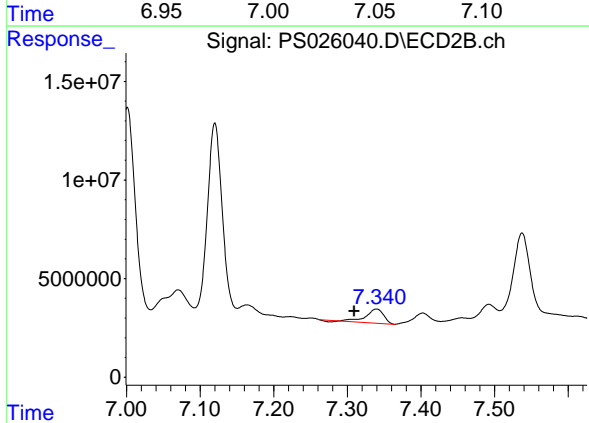
R.T.: 6.733 min
 Delta R.T.: 0.000 min
 Response: 3577577
 Conc: 3.01 ng/ml



#3 4-Nitrophenol

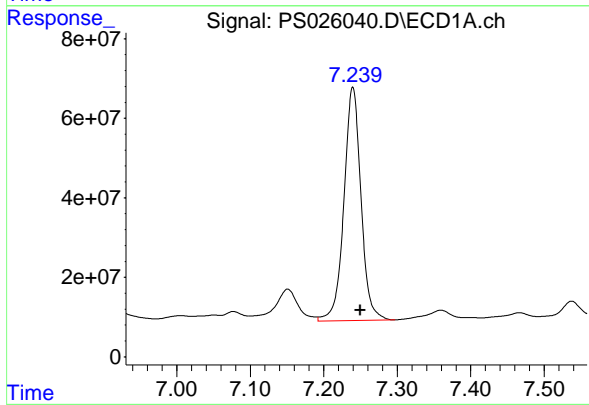
R.T.: 7.051 min
 Delta R.T.: 0.001 min
 Response: 38127510
 Conc: 29.55 ng/ml

Instrument :
 ECD_S
 ClientSampleId :
 LKWD-BACKFILL-10



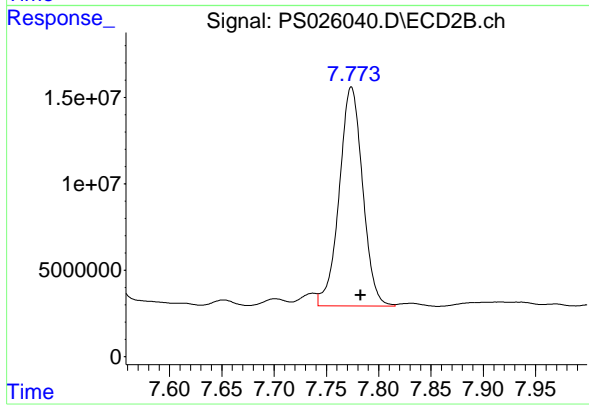
#3 4-Nitrophenol

R.T.: 7.340 min
 Delta R.T.: 0.030 min
 Response: 11721805
 Conc: 34.22 ng/ml



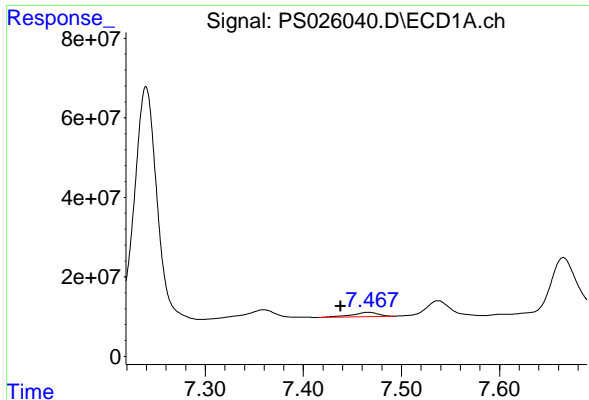
#4 2,4-DCAA

R.T.: 7.240 min
 Delta R.T.: -0.010 min
 Response: 947922653
 Conc: 365.02 ng/ml



#4 2,4-DCAA

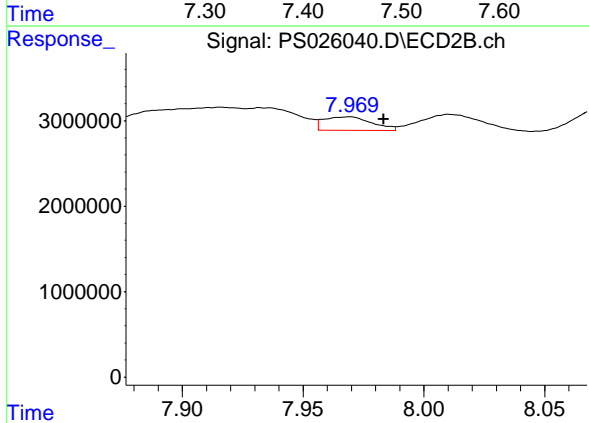
R.T.: 7.774 min
 Delta R.T.: -0.009 min
 Response: 197590334
 Conc: 259.86 ng/ml



#5 DICAMBA

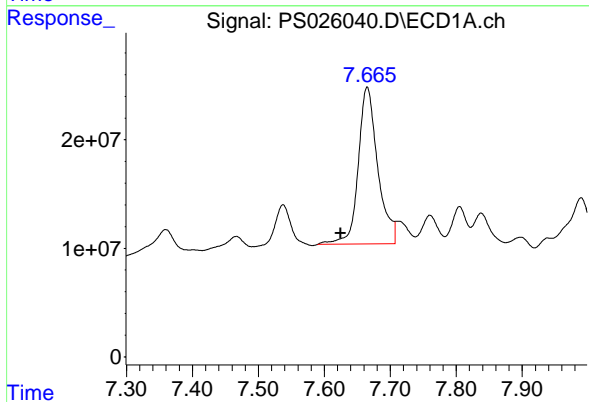
R.T.: 7.467 min
 Delta R.T.: 0.028 min
 Response: 19358890
 Conc: 1.77 ng/ml

Instrument : ECD_S
 ClientSampleId : LKWD-BACKFILL-10



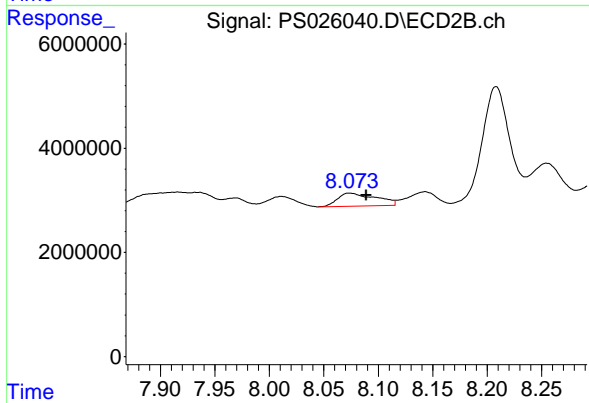
#5 DICAMBA

R.T.: 7.969 min
 Delta R.T.: -0.014 min
 Response: 2196295
 Conc: N.D.



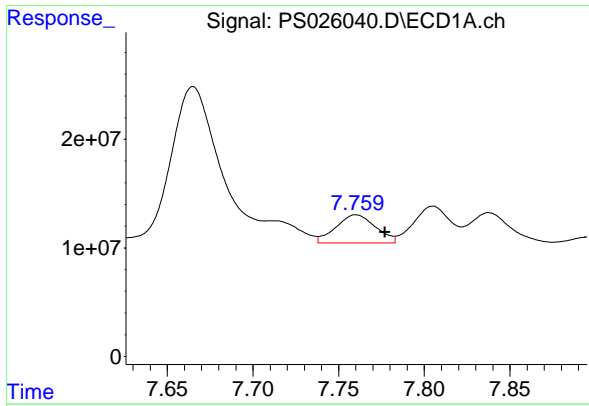
#6 MCPP

R.T.: 7.665 min
 Delta R.T.: 0.040 min
 Response: 296638180
 Conc: 38.73 ug/ml



#6 MCPP

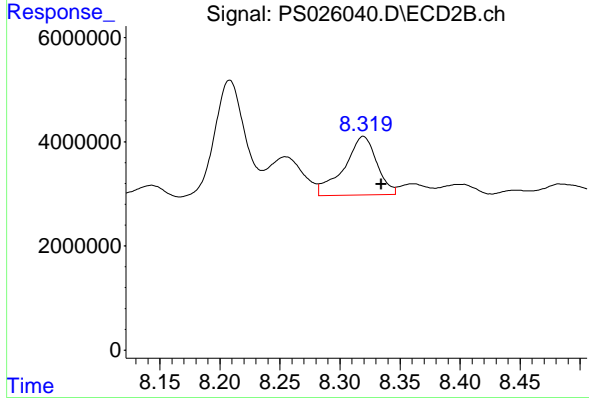
R.T.: 8.074 min
 Delta R.T.: -0.016 min
 Response: 6131730
 Conc: 2.30 ug/ml



#7 MCPA

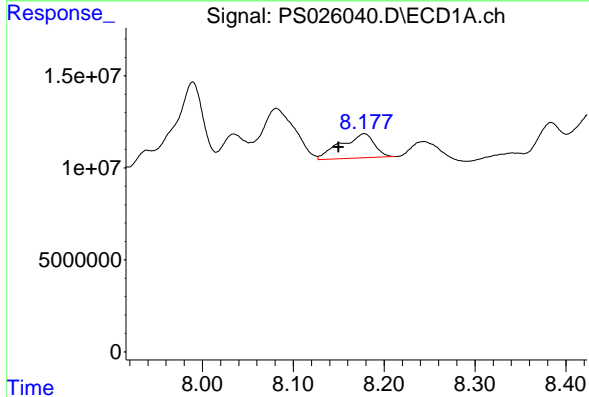
R.T.: 7.760 min
 Delta R.T.: -0.017 min
 Response: 41691635
 Conc: 3.93 ug/ml

Instrument :
 ECD_S
 ClientSampleId :
 LKWD-BACKFILL-10



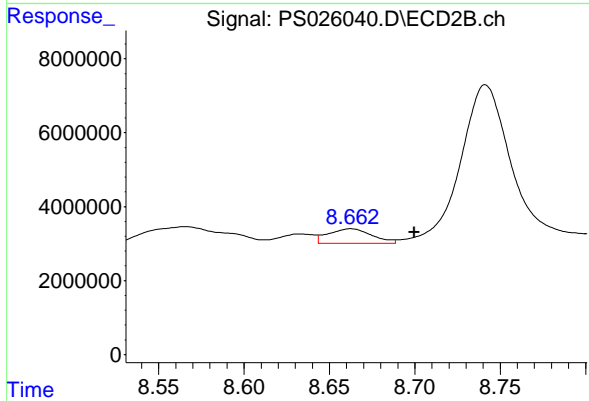
#7 MCPA

R.T.: 8.320 min
 Delta R.T.: -0.015 min
 Response: 21396308
 Conc: 6.22 ug/ml



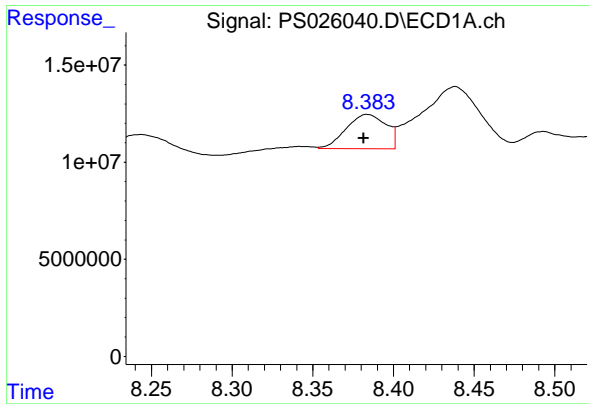
#8 DICHLORPROP

R.T.: 8.178 min
 Delta R.T.: 0.028 min
 Response: 33698789
 Conc: 12.05 ng/ml



#8 DICHLORPROP

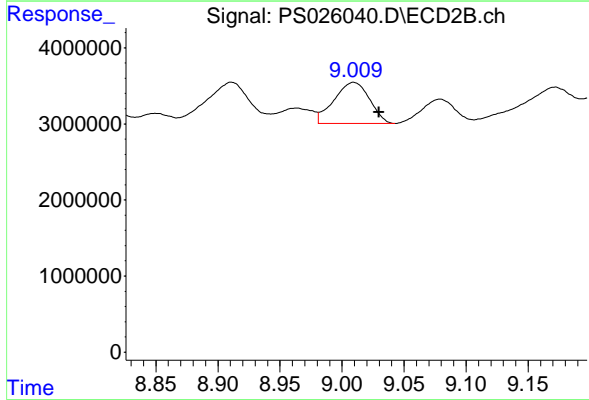
R.T.: 8.663 min
 Delta R.T.: -0.037 min
 Response: 6917646
 Conc: 8.09 ng/ml



#9 2,4-D

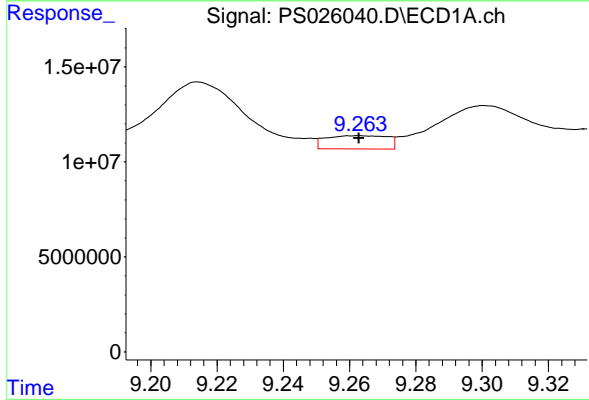
R.T.: 8.384 min
 Delta R.T.: 0.002 min
 Response: 30544373
 Conc: 11.39 ng/ml

Instrument : ECD_S
 ClientSampleId : LKWD-BACKFILL-10



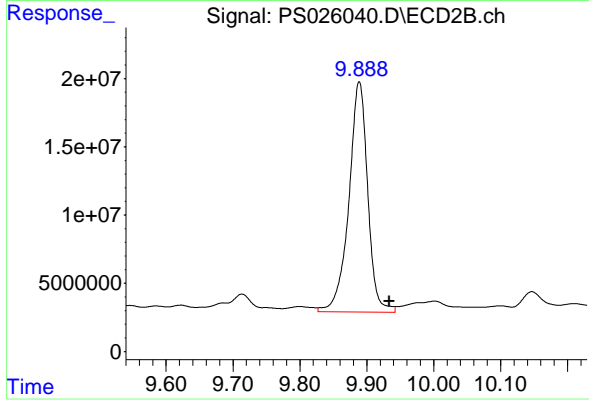
#9 2,4-D

R.T.: 9.009 min
 Delta R.T.: -0.020 min
 Response: 10754179
 Conc: 14.35 ng/ml



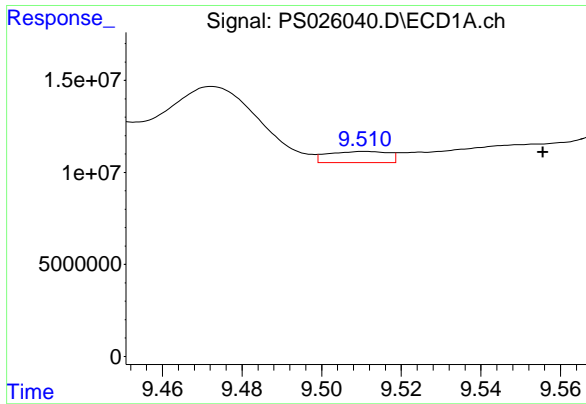
#11 2,4,5-TP (SILVEX)

R.T.: 9.262 min
 Delta R.T.: 0.000 min
 Response: 9039698
 Conc: N.D.



#11 2,4,5-TP (SILVEX)

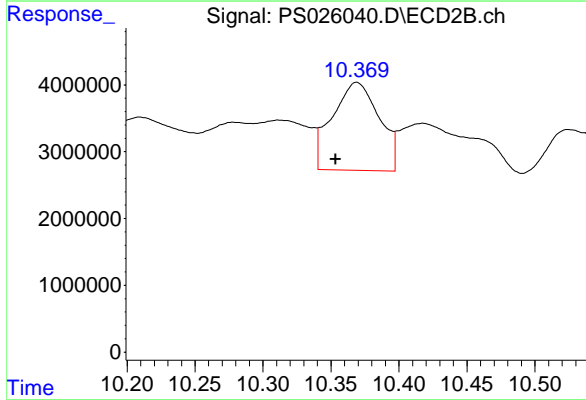
R.T.: 9.889 min
 Delta R.T.: -0.045 min
 Response: 329638575
 Conc: 70.36 ng/ml



#12 2,4,5-T

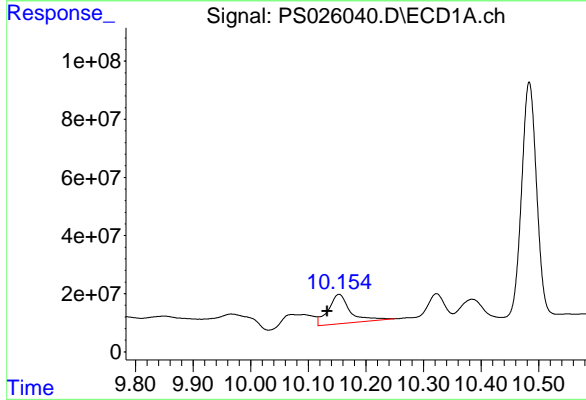
R.T.: 9.511 min
 Delta R.T.: -0.045 min
 Response: 6402099
 Conc: N.D.

Instrument :
 ECD_S
 ClientSampleId :
 LKWD-BACKFILL-10



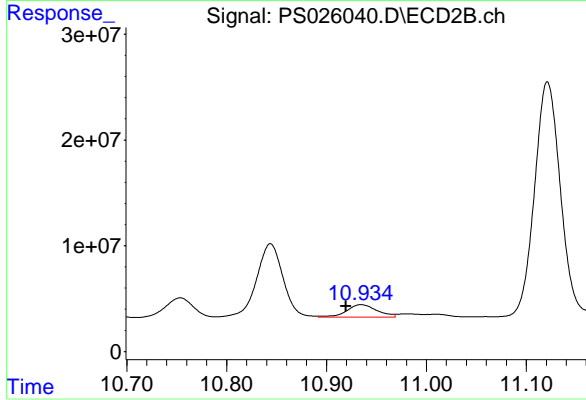
#12 2,4,5-T

R.T.: 10.369 min
 Delta R.T.: 0.015 min
 Response: 31681568
 Conc: 8.48 ng/ml



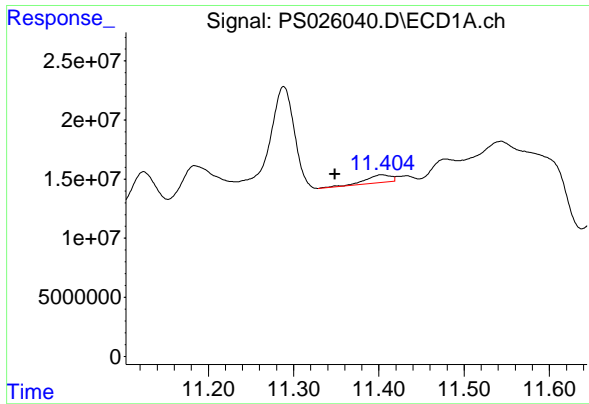
#13 2,4-DB

R.T.: 10.154 min
 Delta R.T.: 0.020 min
 Response: 252600328
 Conc: 154.77 ng/ml



#13 2,4-DB

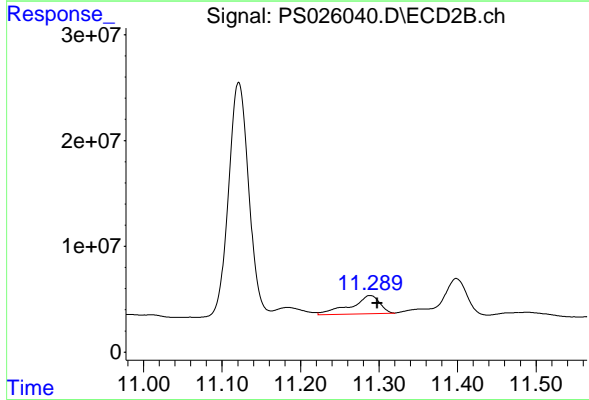
R.T.: 10.935 min
 Delta R.T.: 0.015 min
 Response: 24878428
 Conc: 64.91 ng/ml



#14 DINOSEB

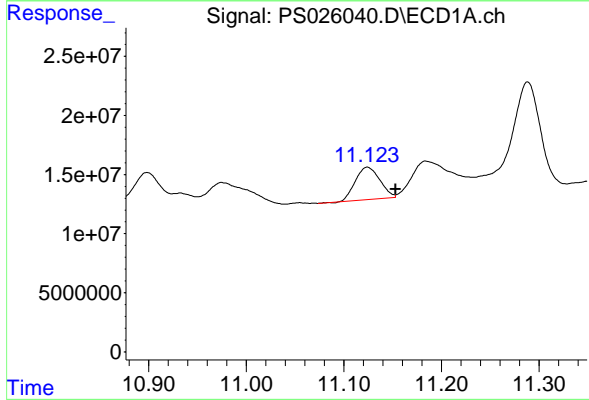
R.T.: 11.403 min
 Delta R.T.: 0.055 min
 Response: 13820232
 Conc: 1.28 ng/ml

Instrument : ECD_S
 ClientSampleId : LKWD-BACKFILL-10



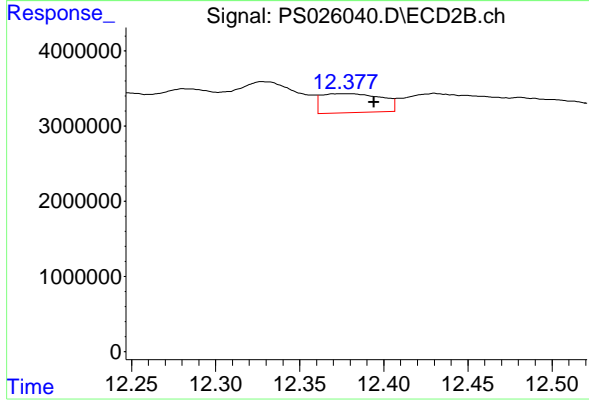
#14 DINOSEB

R.T.: 11.289 min
 Delta R.T.: -0.009 min
 Response: 43543651
 Conc: 13.88 ng/ml



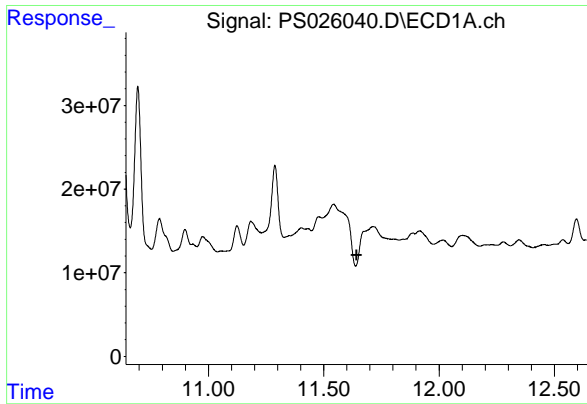
#15 Picloram

R.T.: 11.124 min
 Delta R.T.: -0.029 min
 Response: 47513046
 Conc: 3.30 ng/ml



#15 Picloram

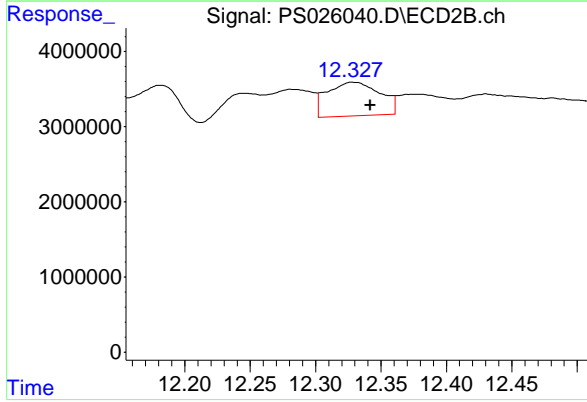
R.T.: 12.377 min
 Delta R.T.: -0.017 min
 Response: 6272891
 Conc: 1.79 ng/ml



#16 DCPA

R.T.: 0.000 min
 Exp R.T.: 11.642 min
 Response: 0
 Conc: N.D.

Instrument :
 ECD_S
 ClientSampleId :
 LKWD-BACKFILL-10



#16 DCPA

R.T.: 12.328 min
 Delta R.T.: -0.014 min
 Response: 12695237
 Conc: 2.45 ng/ml