

Data Path : Z:\pestpcbsrv\HPCHEM1\ECD_S\Data\PS022819\
 Data File : PS003384.D
 Signal(s) : Signal #1: ECD1A.ch Signal #2: ECD2B.ch
 Acq On : 28 Feb 2019 21:18
 Operator : EI\SJ
 Sample : PB117494BL
 Misc :
 ALS Vial : 11 Sample Multiplier: 1

Instrument :
 ECD_S
 ClientSampleId :
 PB117494BL

Integration File signal 1: autoint1.e
 Integration File signal 2: autoint2.e
 Quant Time: Mar 01 03:45:29 2019
 Quant Method : Z:\pestpcbsrv\HPCHEM1\ECD_S\Method\PS022719.M
 Quant Title : 8080.M
 QLast Update : Thu Feb 28 03:00:19 2019
 Response via : Initial Calibration
 Integrator: ChemStation

Volume Inj. : 2 µl
 Signal #1 Phase : Rtx-CLPesticides Signal #2 Phase: Rtx-CLPesticides2
 Signal #1 Info : 30M x 0.32mm x0.5 Signal #2 Info : 30M x 0.32mm x 0.25µm

	Compound	RT#1	RT#2	Resp#1	Resp#2	ng/ml	ng/ml

System Monitoring Compounds							
4) S	2,4-DCAA	11.298	10.800	279.2E6	269.4E6	635.948	573.640
Target Compounds							
1) T	Dalapon	2.817	2.308	57916972	89451787	89.111	141.273 #
3) T	4-Nitroph...	0.000	9.925	0	305003	N.D.	1.357 #
5) T	DICAMBA	11.613	11.042	2105222	4665034	1.194	2.792 #
8) T	DICHLORPROP	0.000	12.212	0	9954449	N.D.	24.089 #
9) T	2,4-D	13.154	12.704	2350604	566211	5.068	1.079 #
10) T	Pentachlo...	0.000	13.213	0	362006	N.D.	0.055 #
11) T	2,4,5-TP ...	0.000	13.814	0	2254773	N.D.	0.885 #
12) T	2,4,5-T	0.000	14.402	0	31552588	N.D.	15.645 #
13) T	2,4-DB	0.000	15.073	0	51685261	N.D.	202.404 #
14) T	DINOSEB	0.000	15.467	0	7847120	N.D.	4.396 #
15) T	Picloram	0.000	16.739	0	53020223	N.D.	20.889 #
16) T	DCPA	0.000	16.574	0	14072403	N.D.	4.524 #

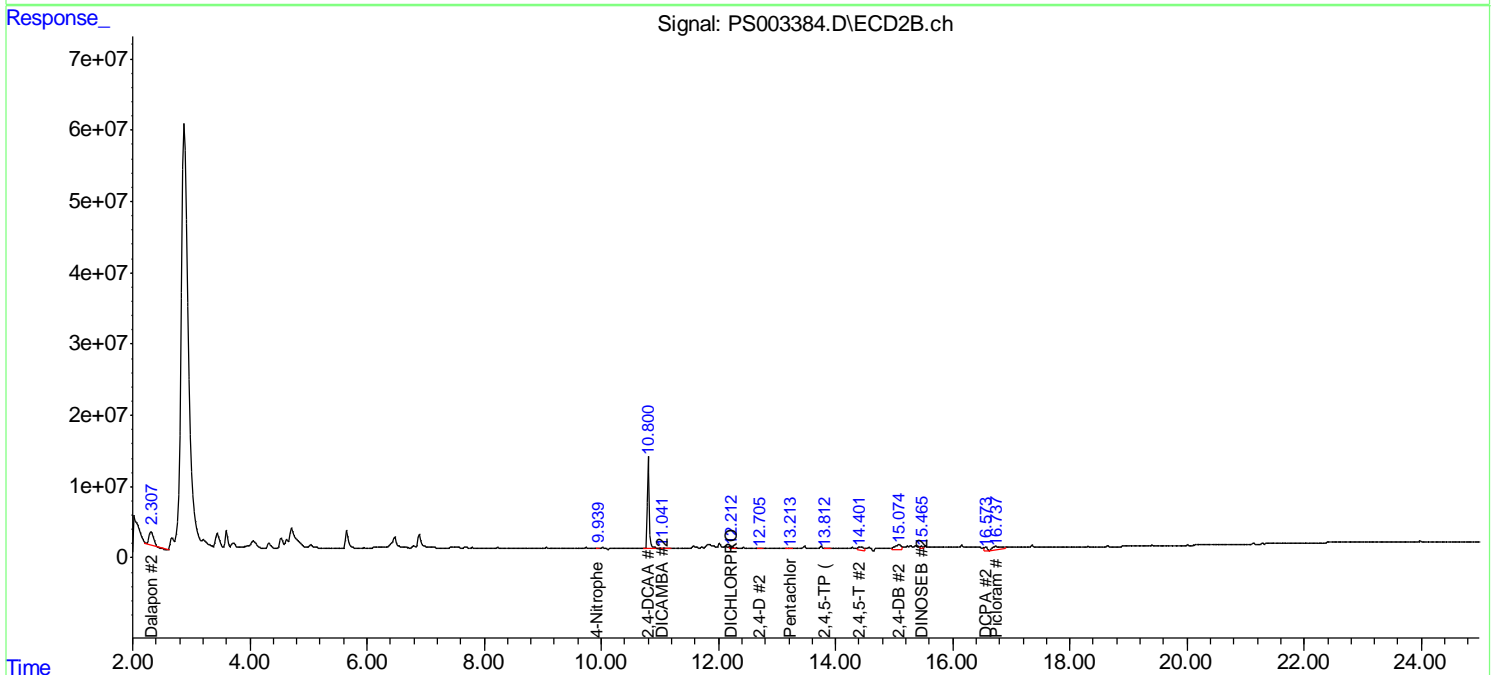
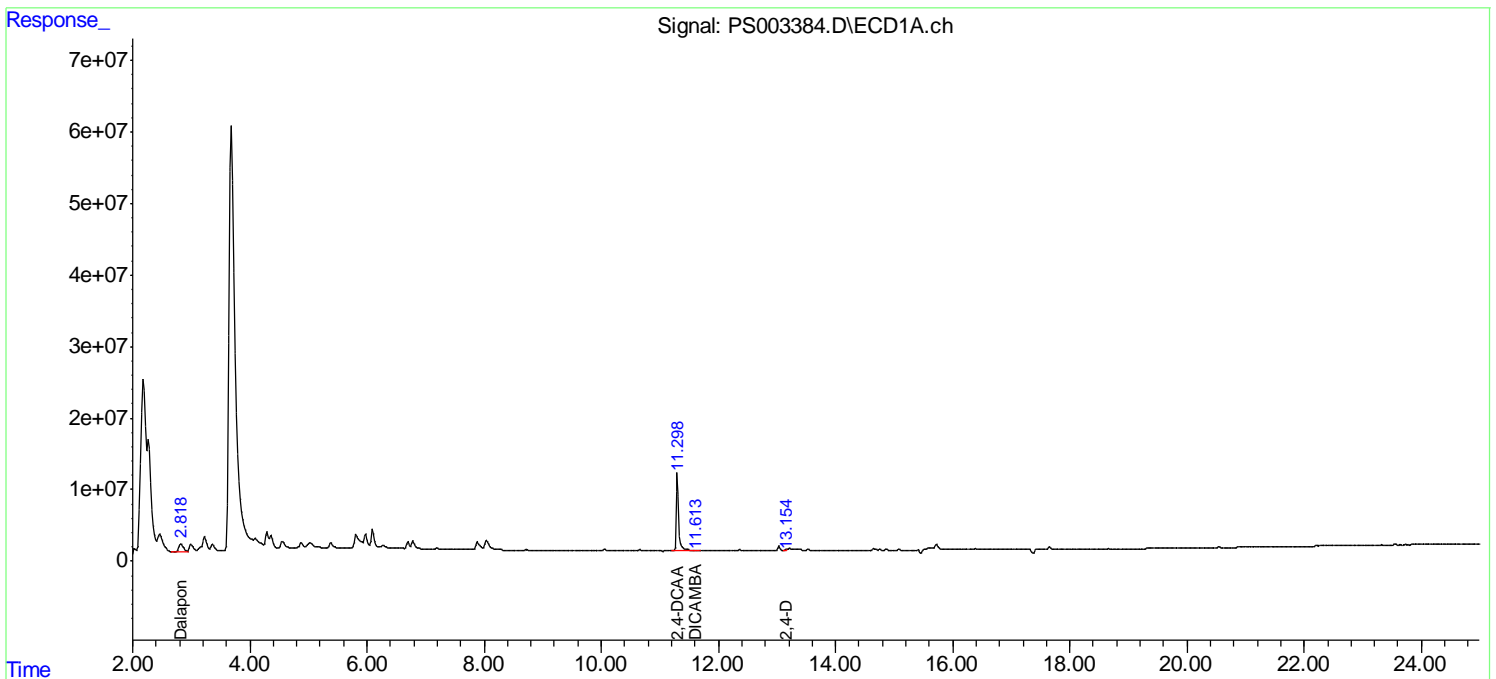
(f)=RT Delta > 1/2 Window (#)=Amounts differ by > 25% (m)=manual int.

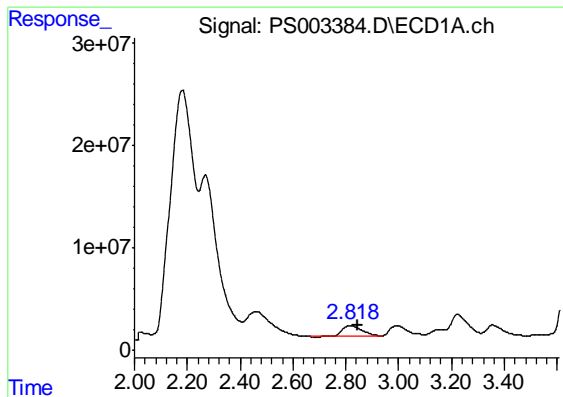
Data Path : Z:\pestpcbsrv\HPCHEM1\ECD_S\Data\PS022819\
 Data File : PS003384.D
 Signal(s) : Signal #1: ECD1A.ch Signal #2: ECD2B.ch
 Acq On : 28 Feb 2019 21:18
 Operator : EI\SJ
 Sample : PB117494BL
 Misc :
 ALS Vial : 11 Sample Multiplier: 1

Instrument :
 ECD_S
 ClientSampleId :
 PB117494BL

Integration File signal 1: autoint1.e
 Integration File signal 2: autoint2.e
 Quant Time: Mar 01 03:45:29 2019
 Quant Method : Z:\pestpcbsrv\HPCHEM1\ECD_S\Method\PS022719.M
 Quant Title : 8080.M
 QLast Update : Thu Feb 28 03:00:19 2019
 Response via : Initial Calibration
 Integrator: ChemStation

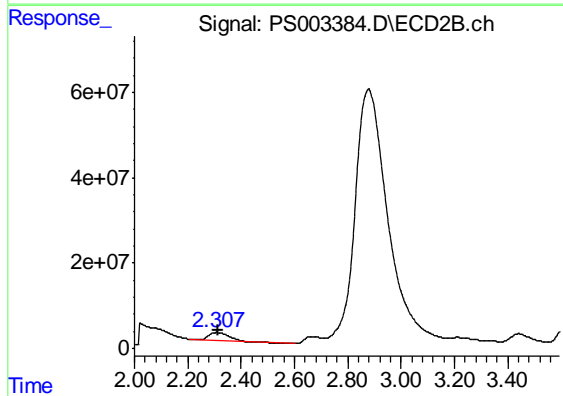
Volume Inj. : 2 µl
 Signal #1 Phase : Rtx-CLPesticides Signal #2 Phase: Rtx-CLPesticides2
 Signal #1 Info : 30M x 0.32mm x0.5 Signal #2 Info : 30M x 0.32mm x 0.25µm



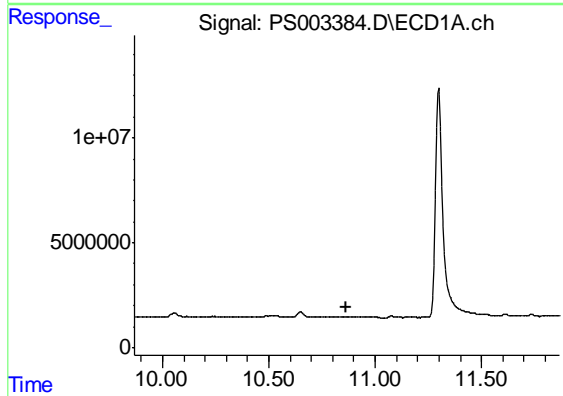


#1 Dalapon
 R.T.: 2.817 min
 Delta R.T.: -0.027 min
 Response: 57916972
 Conc: 89.11 ng/ml

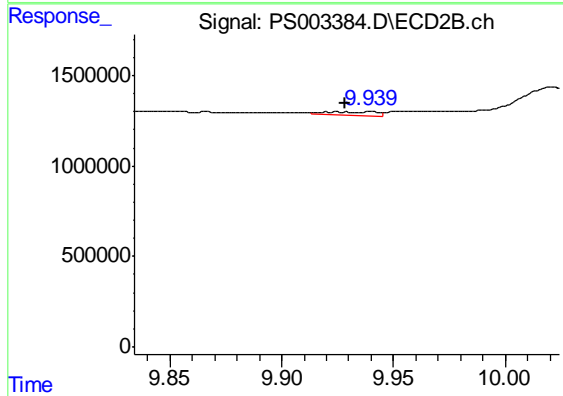
Instrument :
 ECD_S
 ClientSampleId :
 PB117494BL



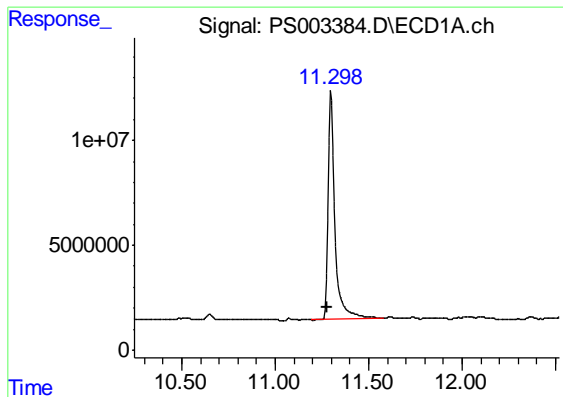
#1 Dalapon
 R.T.: 2.308 min
 Delta R.T.: -0.008 min
 Response: 89451787
 Conc: 141.27 ng/ml



#3 4-Nitrophenol
 R.T.: 0.000 min
 Exp R.T. : 10.867 min
 Response: 0
 Conc: N.D.



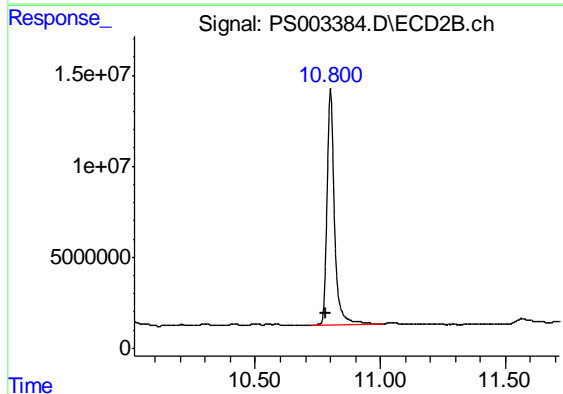
#3 4-Nitrophenol
 R.T.: 9.925 min
 Delta R.T.: -0.003 min
 Response: 305003
 Conc: 1.36 ng/ml



#4 2,4-DCAA

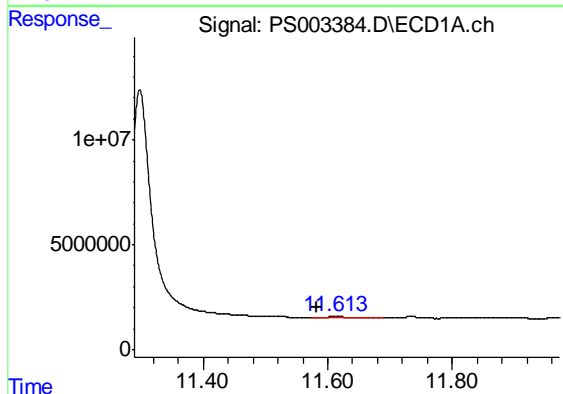
R.T.: 11.298 min
Delta R.T.: 0.020 min
Response: 279196930
Conc: 635.95 ng/ml

Instrument :
ECD_S
ClientSampleId :
PB117494BL



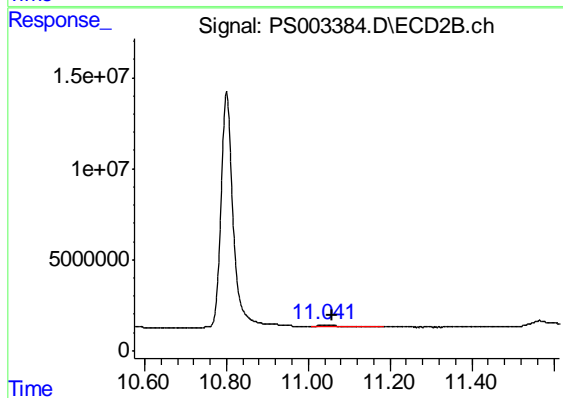
#4 2,4-DCAA

R.T.: 10.800 min
Delta R.T.: 0.021 min
Response: 269363641
Conc: 573.64 ng/ml



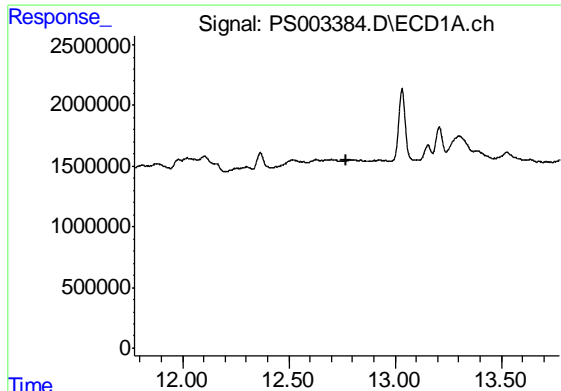
#5 DICAMBA

R.T.: 11.613 min
Delta R.T.: 0.031 min
Response: 2105222
Conc: 1.19 ng/ml



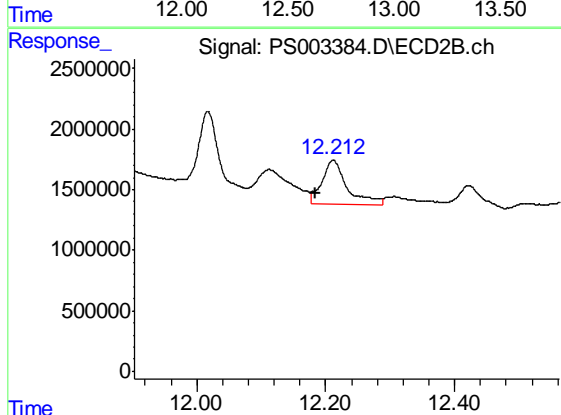
#5 DICAMBA

R.T.: 11.042 min
Delta R.T.: -0.017 min
Response: 4665034
Conc: 2.79 ng/ml

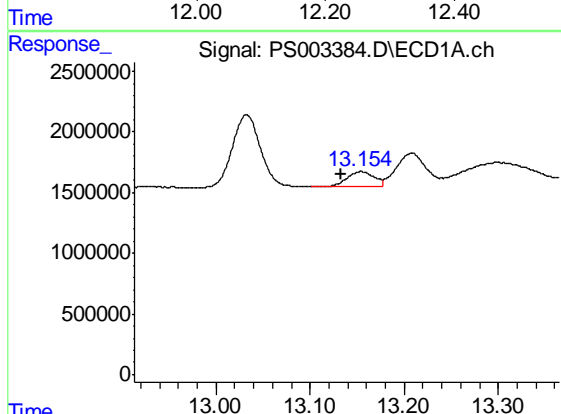


#8 DICHLORPROP
 R.T.: 0.000 min
 Exp R.T. : 12.773 min
 Response: 0
 Conc: N.D.

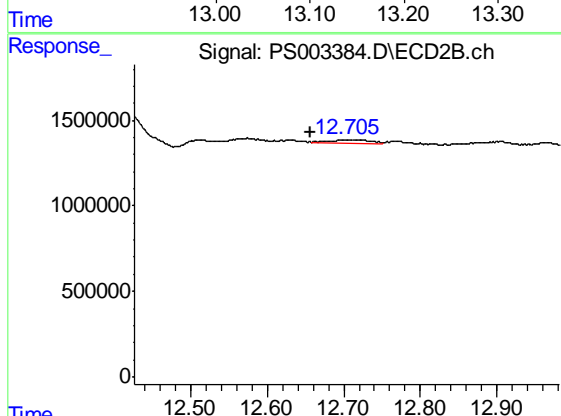
Instrument :
 ECD_S
 ClientSampleId :
 PB117494BL



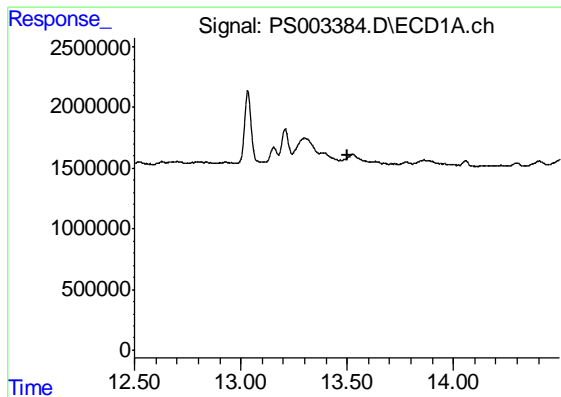
#8 DICHLORPROP
 R.T.: 12.212 min
 Delta R.T.: 0.027 min
 Response: 9954449
 Conc: 24.09 ng/ml



#9 2,4-D
 R.T.: 13.154 min
 Delta R.T.: 0.022 min
 Response: 2350604
 Conc: 5.07 ng/ml

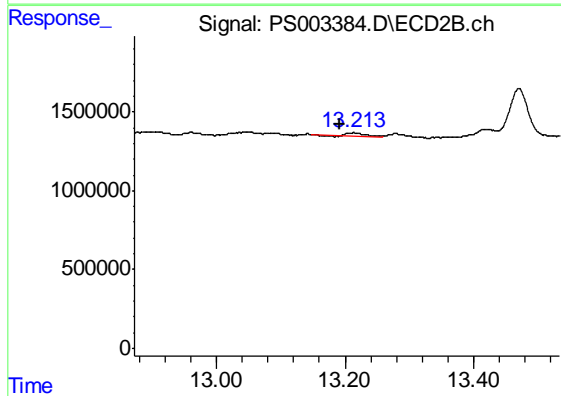


#9 2,4-D
 R.T.: 12.704 min
 Delta R.T.: 0.047 min
 Response: 566211
 Conc: 1.08 ng/ml

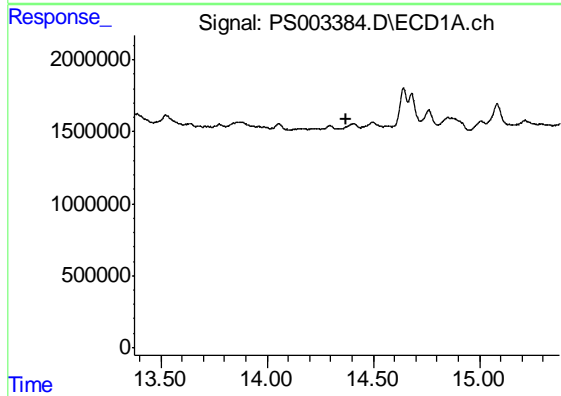


#10 Pentachlorophenol
 R.T.: 0.000 min
 Exp R.T. : 13.499 min
 Response: 0
 Conc: N.D.

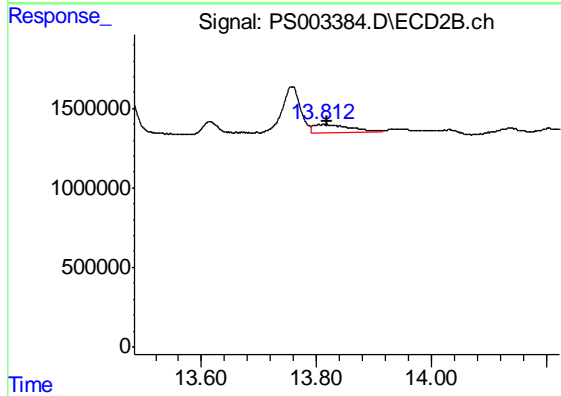
Instrument :
 ECD_S
 ClientSampleId :
 PB117494BL



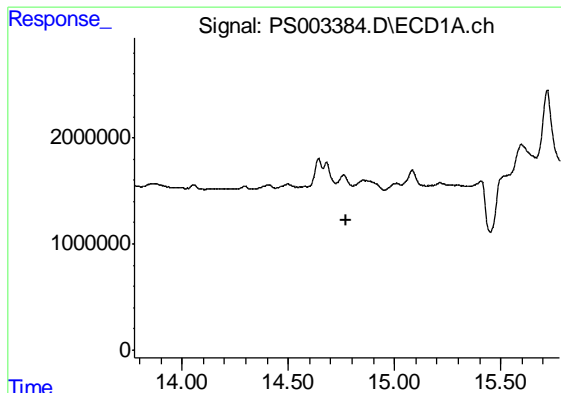
#10 Pentachlorophenol
 R.T.: 13.213 min
 Delta R.T.: 0.022 min
 Response: 362006
 Conc: 0.05 ng/ml



#11 2,4,5-TP (SILVEX)
 R.T.: 0.000 min
 Exp R.T. : 14.376 min
 Response: 0
 Conc: N.D.



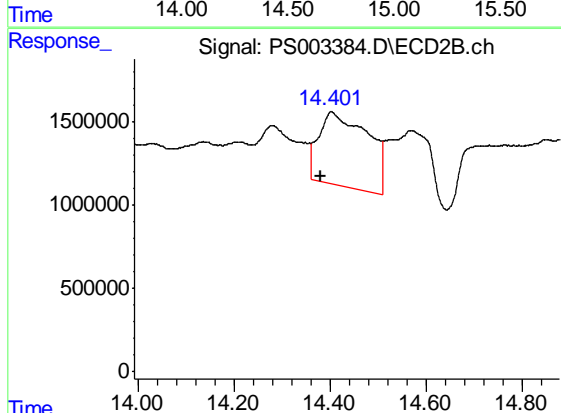
#11 2,4,5-TP (SILVEX)
 R.T.: 13.814 min
 Delta R.T.: -0.003 min
 Response: 2254773
 Conc: 0.89 ng/ml



#12 2,4,5-T

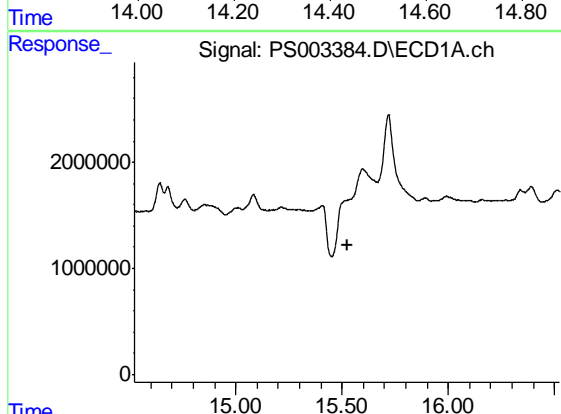
R.T.: 0.000 min
 Exp R.T. : 14.776 min
 Response: 0
 Conc: N.D.

Instrument :
 ECD_S
 ClientSampleId :
 PB117494BL



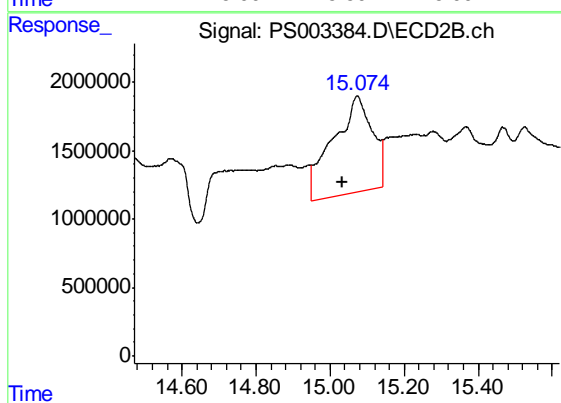
#12 2,4,5-T

R.T.: 14.402 min
 Delta R.T.: 0.022 min
 Response: 31552588
 Conc: 15.65 ng/ml



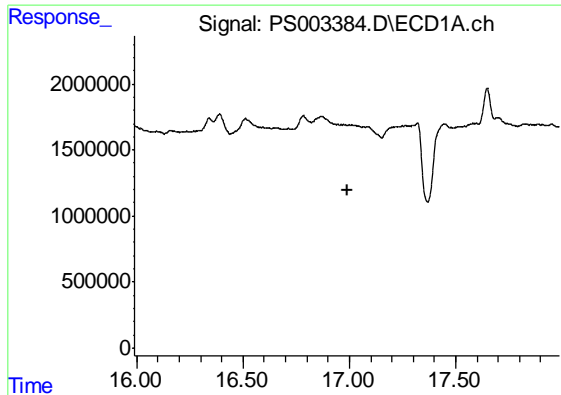
#13 2,4-DB

R.T.: 0.000 min
 Exp R.T. : 15.523 min
 Response: 0
 Conc: N.D.



#13 2,4-DB

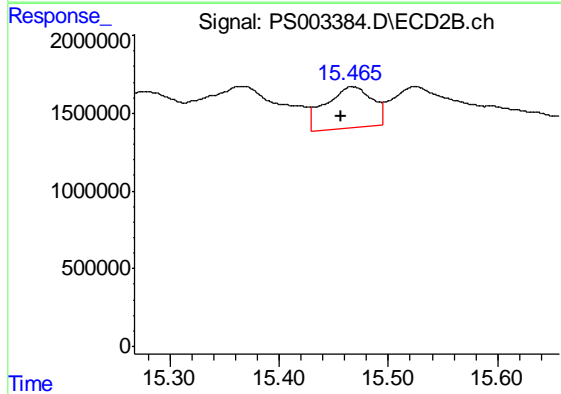
R.T.: 15.073 min
 Delta R.T.: 0.040 min
 Response: 51685261
 Conc: 202.40 ng/ml



#14 DINOSEB

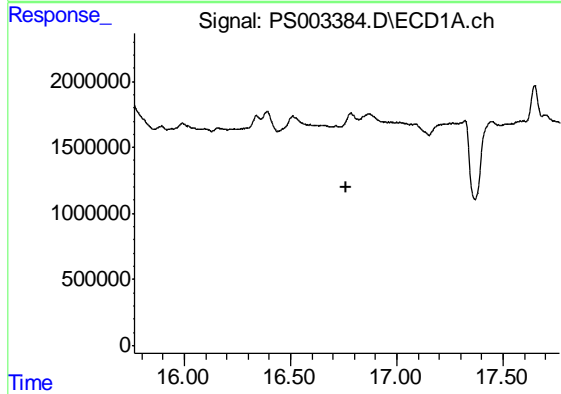
R.T.: 0.000 min
 Exp R.T. : 16.989 min
 Response: 0
 Conc: N.D.

Instrument :
 ECD_S
 ClientSampleId :
 PB117494BL



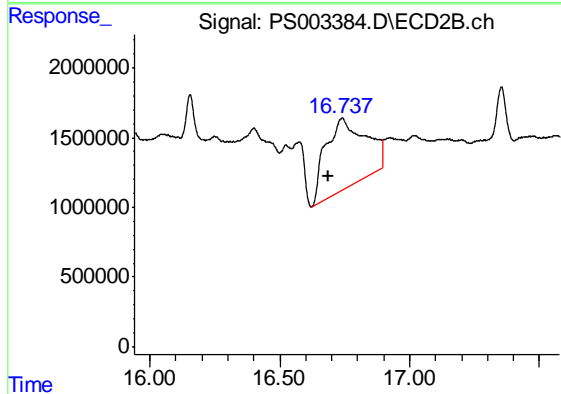
#14 DINOSEB

R.T.: 15.467 min
 Delta R.T.: 0.010 min
 Response: 7847120
 Conc: 4.40 ng/ml



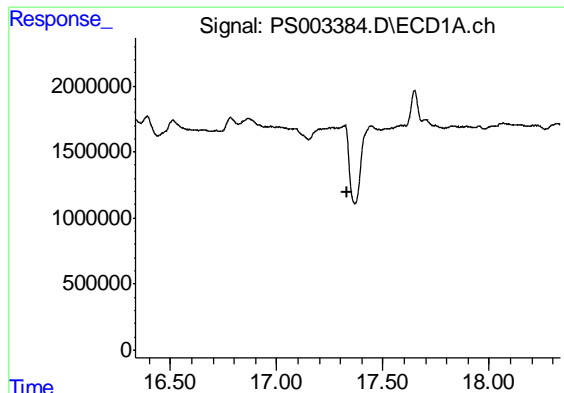
#15 Picloram

R.T.: 0.000 min
 Exp R.T. : 16.765 min
 Response: 0
 Conc: N.D.



#15 Picloram

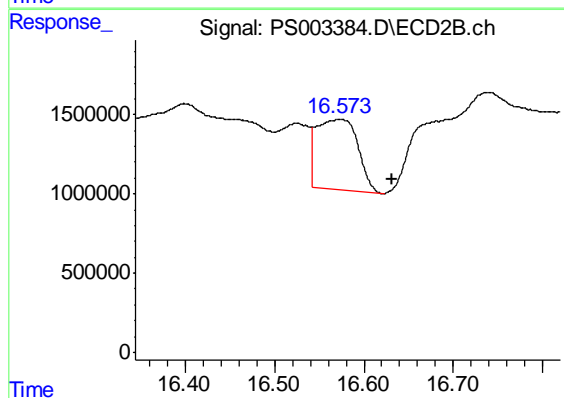
R.T.: 16.739 min
 Delta R.T.: 0.050 min
 Response: 53020223
 Conc: 20.89 ng/ml



#16 DCPA

R.T.: 0.000 min
 Exp R.T.: 17.335 min
 Response: 0
 Conc: N.D.

Instrument :
 ECD_S
 ClientSampleId :
 PB117494BL



#16 DCPA

R.T.: 16.574 min
 Delta R.T.: -0.058 min
 Response: 14072403
 Conc: 4.52 ng/ml