

Data Path : Z:\pestpcbsrv\HPCHEM1\ECD_S\Data\PS022822\
 Data File : PS018470.D
 Signal(s) : Signal #1: ECD1A.ch Signal #2: ECD2B.ch
 Acq On : 28 Feb 2022 18:59
 Operator : AJ\MA
 Sample : HSTDCCC750
 Misc :
 ALS Vial : 3 Sample Multiplier: 1

Instrument :
 ECD_S
 ClientSampleId :
 HSTDCCC750

Integration File signal 1: autoint1.e
 Integration File signal 2: autoint2.e
 Quant Time: Mar 01 00:08:51 2022
 Quant Method : Z:\pestpcbsrv\HPCHEM1\ECD_S\Method\PS022122.M
 Quant Title : 8080.M
 QLast Update : Tue Feb 22 00:27:26 2022
 Response via : Initial Calibration
 Integrator: ChemStation

Volume Inj. : 2 µl
 Signal #1 Phase : Rtx-CLPesticides Signal #2 Phase: Rtx-CLPesticides2
 Signal #1 Info : 30M x 0.32mm x0.5 Signal #2 Info : 30M x 0.32mm x 0.25µm

	Compound	RT#1	RT#2	Resp#1	Resp#2	ng/ml	ng/ml

System Monitoring Compounds							
4) S	2,4-DCAA	7.023	6.636	1303.1E6	529.1E6	783.083	794.075
Target Compounds							
1) T	Dalapon	2.886	2.404	1875.6E6	593.4E6	691.460	694.463
2) T	3,5-DICHL...	6.268	5.856	1677.1E6	742.9E6	705.955	728.663
3) T	4-Nitroph...	6.858	6.278	611.2E6	317.3E6	709.980	726.291
5) T	DICAMBA	7.206	6.788	4863.4E6	2125.6E6	739.767	756.981
6) T	MCP P	7.375	6.883	372.8E6	174.6E6	77.026	76.747
7) T	MCPA	7.523	7.092	527.8E6	252.0E6	75.060	75.231
8) T	DICHLORPROP	7.891	7.398	1232.6E6	554.1E6	728.832	752.541
9) T	2,4-D	8.121	7.690	1481.7E6	698.0E6	726.351	745.653
10) T	Pentachlo...	8.413	8.096	17045.6E6	6936.4E6	719.867	727.762
11) T	2,4,5-TP ...	8.963	8.459	6925.4E6	3179.4E6	727.397	770.097
12) T	2,4,5-T	9.246	8.836	7409.2E6	3029.1E6	736.561	769.552
13) T	2,4-DB	9.795	9.339	1328.4E6	420.6E6	764.416	778.426
14) T	DINOSEB	10.933	9.657	5604.5E6	2186.2E6	721.387	752.036
15) T	Picloram	10.767	10.640	9097.1E6	4125.2E6	715.963	713.330
16) T	DCPA	11.202	10.581	8891.1E6	3760.6E6	739.374	757.370

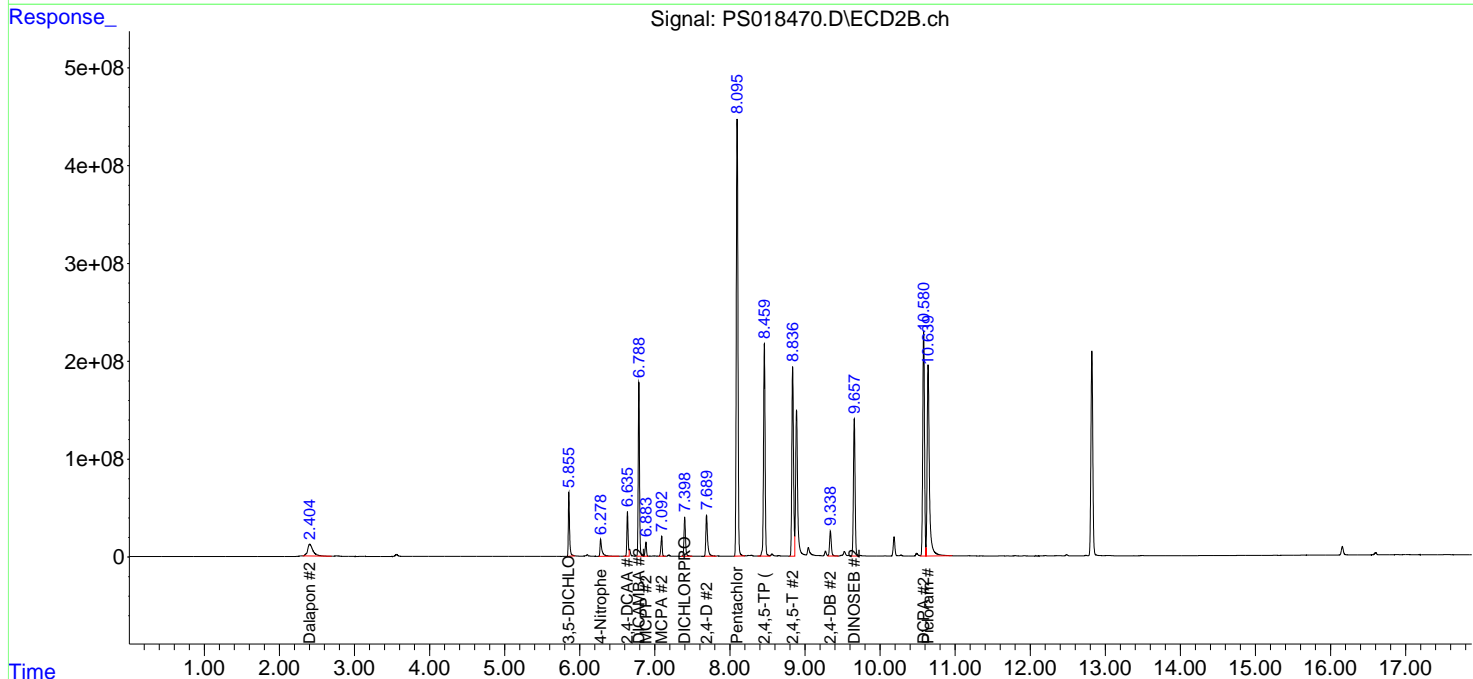
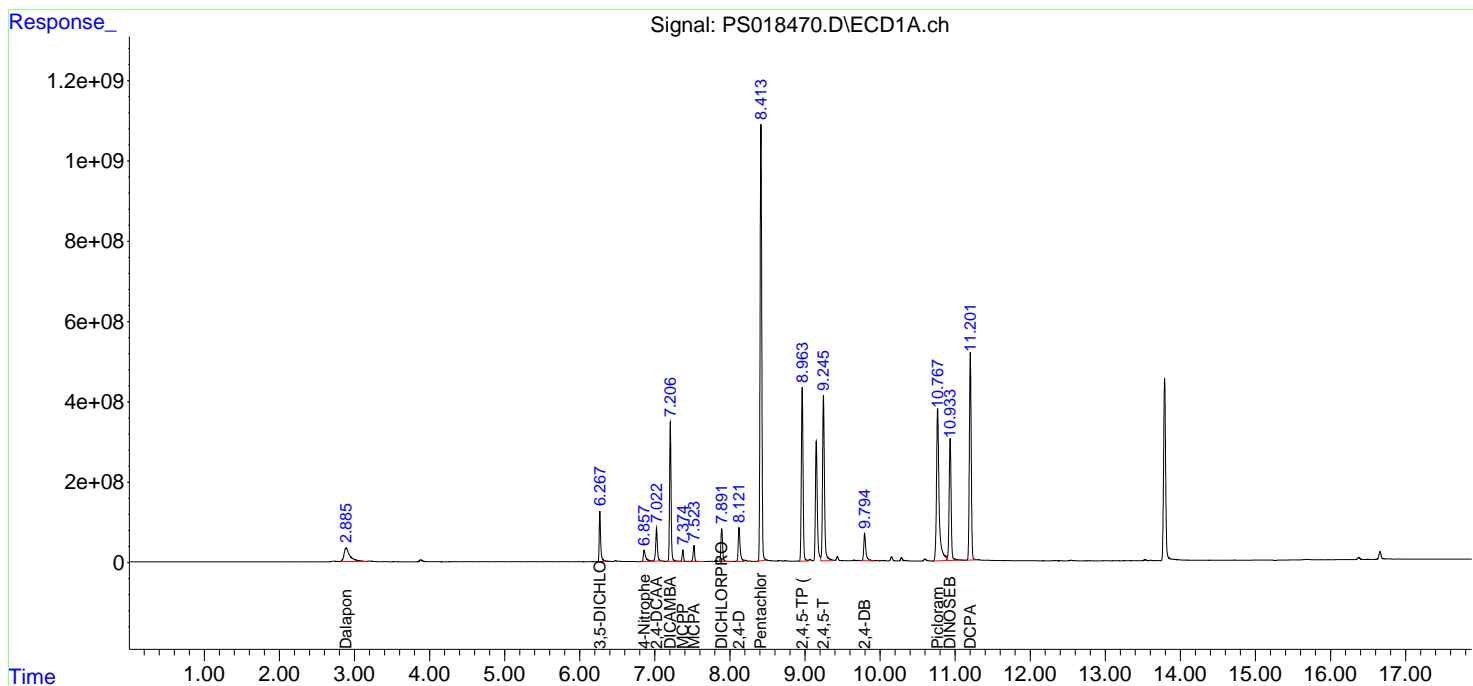
(f)=RT Delta > 1/2 Window (#)=Amounts differ by > 25% (m)=manual int.

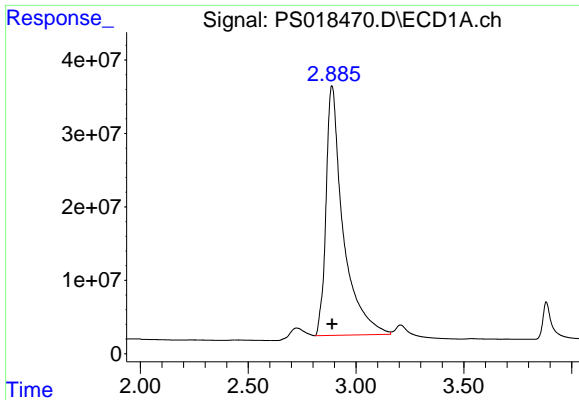
Data Path : Z:\pestpcbsrv\HPCHEM1\ECD_S\Data\PS022822\
 Data File : PS018470.D
 Signal(s) : Signal #1: ECD1A.ch Signal #2: ECD2B.ch
 Acq On : 28 Feb 2022 18:59
 Operator : AJ\MA
 Sample : HSTDCCC750
 Misc :
 ALS Vial : 3 Sample Multiplier: 1

Instrument :
 ECD_S
 ClientSampleId :
 HSTDCCC750

Integration File signal 1: autoint1.e
 Integration File signal 2: autoint2.e
 Quant Time: Mar 01 00:08:51 2022
 Quant Method : Z:\pestpcbsrv\HPCHEM1\ECD_S\Method\PS022122.M
 Quant Title : 8080.M
 QLast Update : Tue Feb 22 00:27:26 2022
 Response via : Initial Calibration
 Integrator: ChemStation

Volume Inj. : 2 µl
 Signal #1 Phase : Rtx-CLPesticides Signal #2 Phase: Rtx-CLPesticides2
 Signal #1 Info : 30M x 0.32mm x0.5 Signal #2 Info : 30M x 0.32mm x 0.25µm

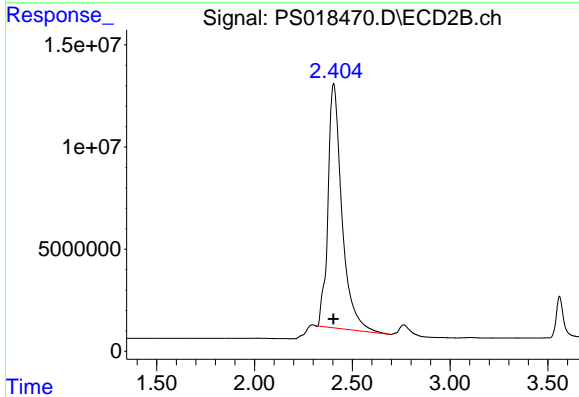




#1 Dalapon

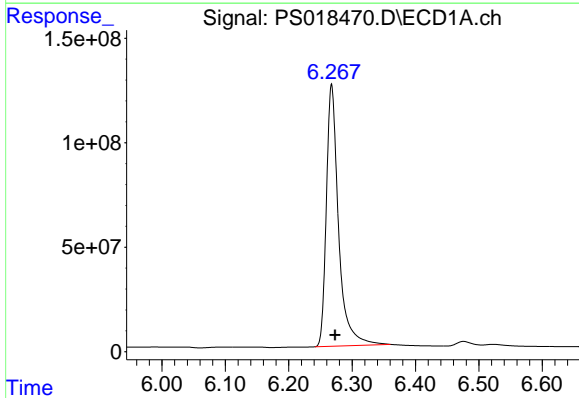
R.T.: 2.886 min
 Delta R.T.: -0.002 min
 Response: 1875590478
 Conc: 691.46 ng/ml

Instrument :
 ECD_S
 ClientSampleId :
 HSTDCCC750



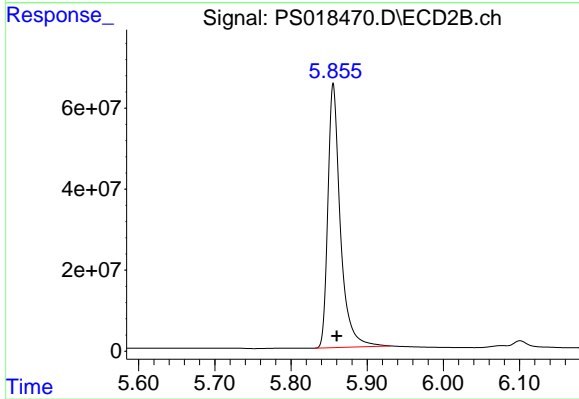
#1 Dalapon

R.T.: 2.404 min
 Delta R.T.: 0.000 min
 Response: 593379511
 Conc: 694.46 ng/ml



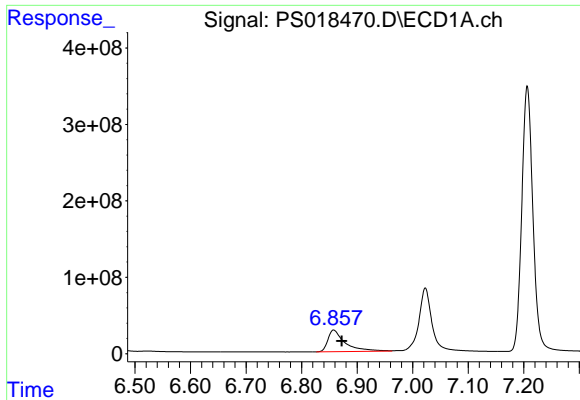
#2 3,5-DICHLOROBENZOIC ACID

R.T.: 6.268 min
 Delta R.T.: -0.005 min
 Response: 1677083825
 Conc: 705.95 ng/ml



#2 3,5-DICHLOROBENZOIC ACID

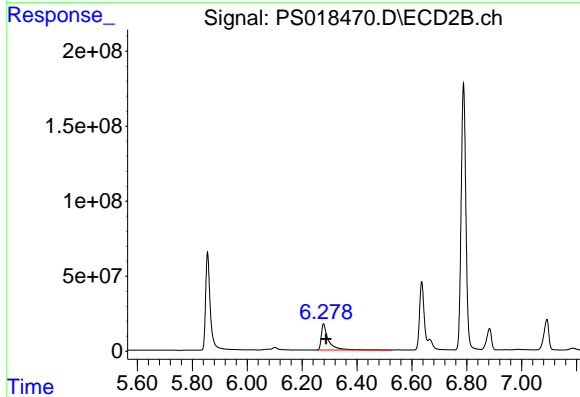
R.T.: 5.856 min
 Delta R.T.: -0.005 min
 Response: 742860276
 Conc: 728.66 ng/ml



#3 4-Nitrophenol

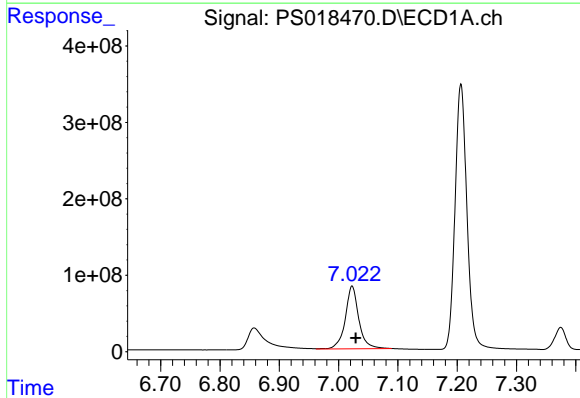
R.T.: 6.858 min
Delta R.T.: -0.015 min
Response: 611211688
Conc: 709.98 ng/ml

Instrument :
ECD_S
ClientSampleId :
HSTDCCC750



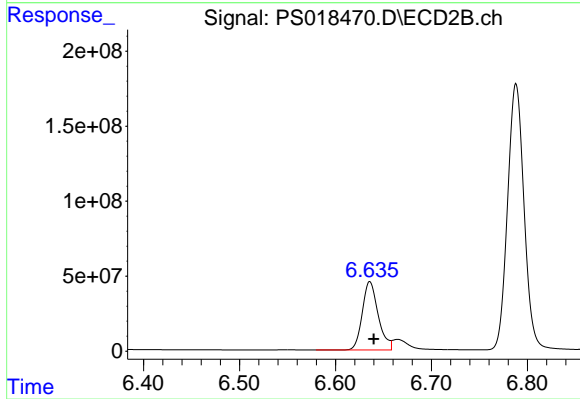
#3 4-Nitrophenol

R.T.: 6.278 min
Delta R.T.: -0.009 min
Response: 317289444
Conc: 726.29 ng/ml



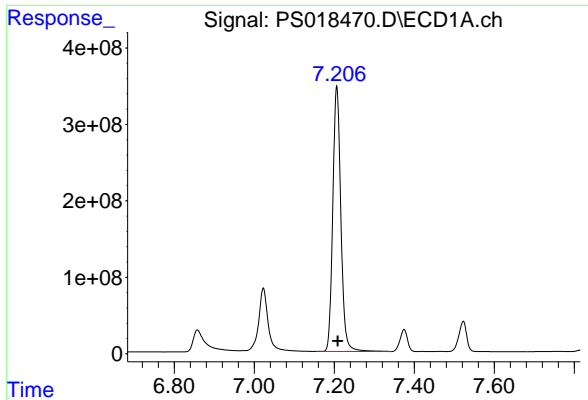
#4 2,4-DCAA

R.T.: 7.023 min
Delta R.T.: -0.006 min
Response: 1303089614
Conc: 783.08 ng/ml



#4 2,4-DCAA

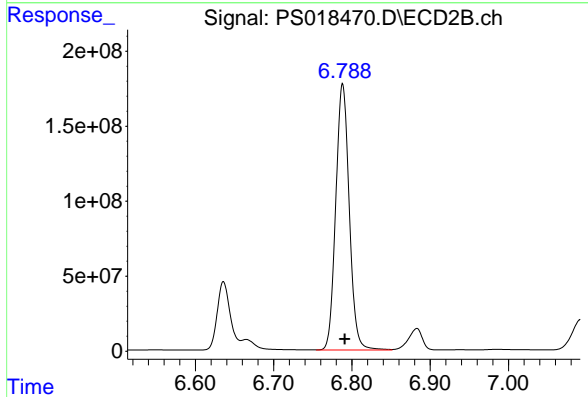
R.T.: 6.636 min
Delta R.T.: -0.004 min
Response: 529126027
Conc: 794.08 ng/ml



#5 DICAMBA

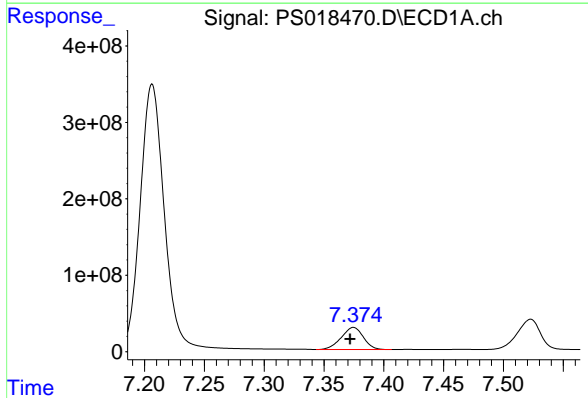
R.T.: 7.206 min
 Delta R.T.: -0.003 min
 Response: 4863356454
 Conc: 739.77 ng/ml

Instrument :
 ECD_S
 ClientSampleId :
 HSTDCCC750



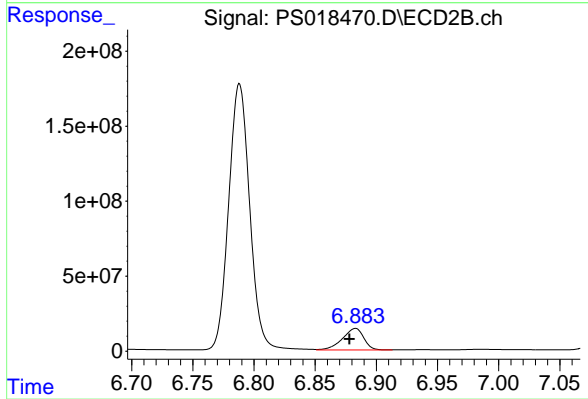
#5 DICAMBA

R.T.: 6.788 min
 Delta R.T.: -0.003 min
 Response: 2125607329
 Conc: 756.98 ng/ml



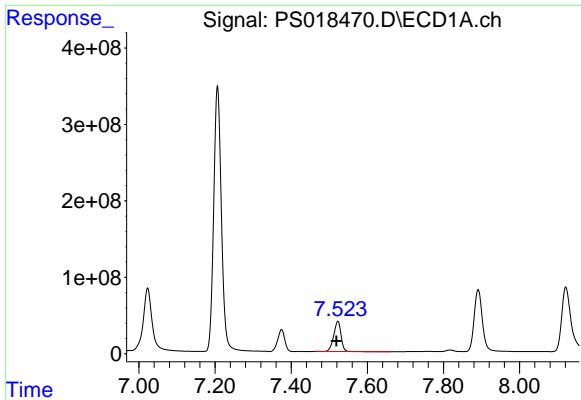
#6 MCP

R.T.: 7.375 min
 Delta R.T.: 0.003 min
 Response: 372844100
 Conc: 77.03 ug/ml



#6 MCP

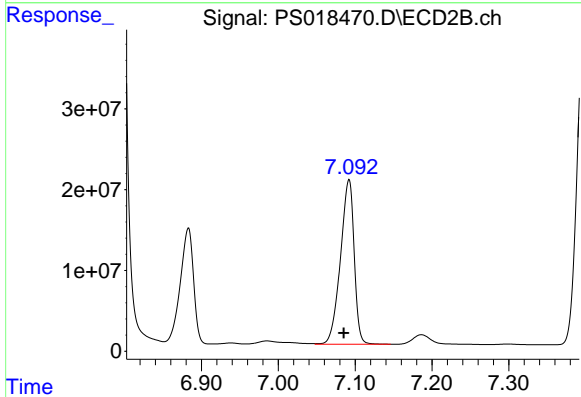
R.T.: 6.883 min
 Delta R.T.: 0.005 min
 Response: 174609432
 Conc: 76.75 ug/ml



#7 MCPA

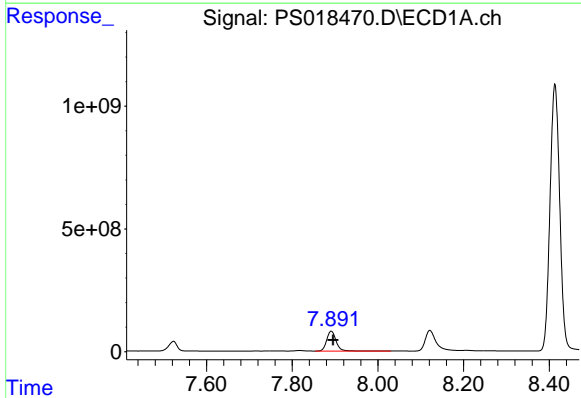
R.T.: 7.523 min
 Delta R.T.: 0.005 min
 Response: 527782796
 Conc: 75.06 ug/ml

Instrument :
 ECD_S
 ClientSampleId :
 HSTDCCC750



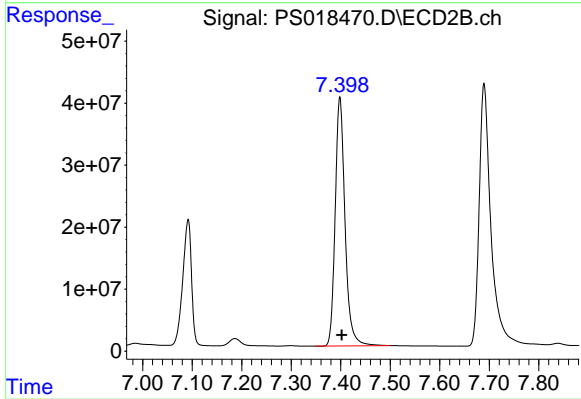
#7 MCPA

R.T.: 7.092 min
 Delta R.T.: 0.007 min
 Response: 251997324
 Conc: 75.23 ug/ml



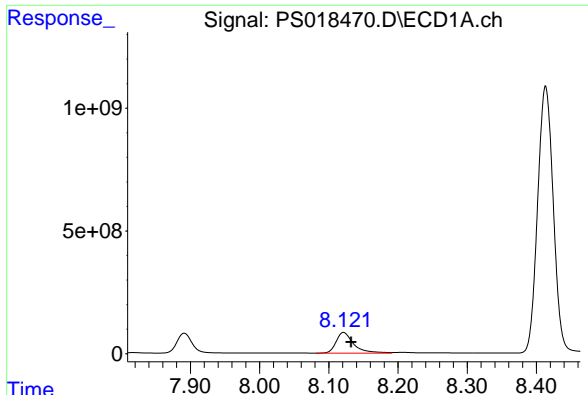
#8 DICHLORPROP

R.T.: 7.891 min
 Delta R.T.: -0.005 min
 Response: 1232630122
 Conc: 728.83 ng/ml



#8 DICHLORPROP

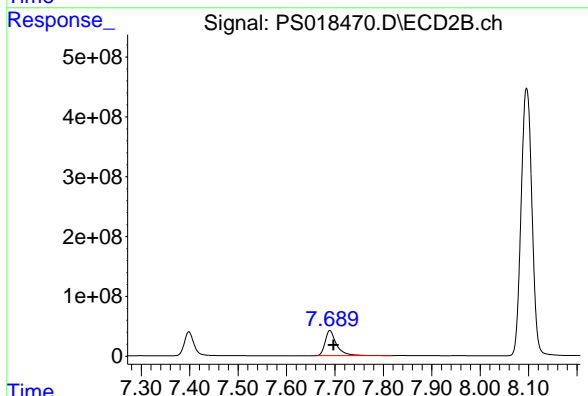
R.T.: 7.398 min
 Delta R.T.: -0.004 min
 Response: 554088020
 Conc: 752.54 ng/ml



#9 2,4-D

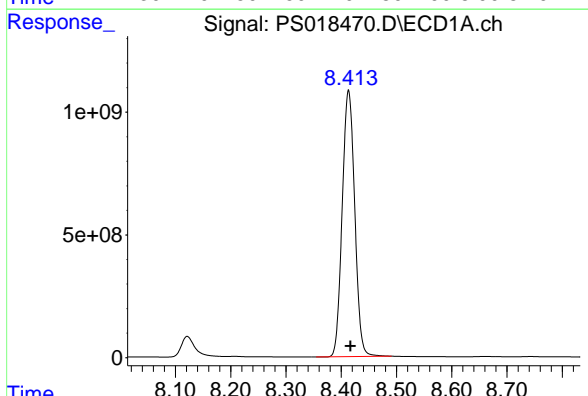
R.T.: 8.121 min
 Delta R.T.: -0.011 min
 Response: 1481710916
 Conc: 726.35 ng/ml

Instrument :
 ECD_S
 ClientSampleId :
 HSTDCCC750



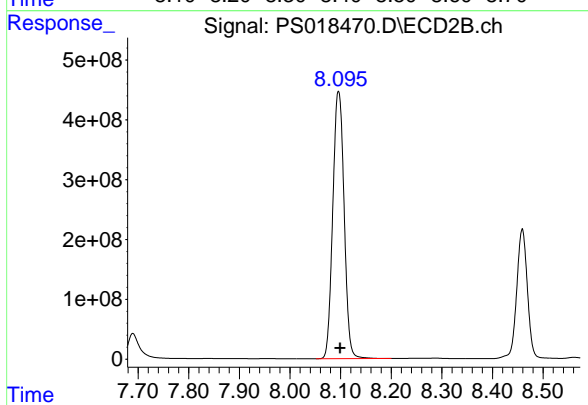
#9 2,4-D

R.T.: 7.690 min
 Delta R.T.: -0.008 min
 Response: 698002868
 Conc: 745.65 ng/ml



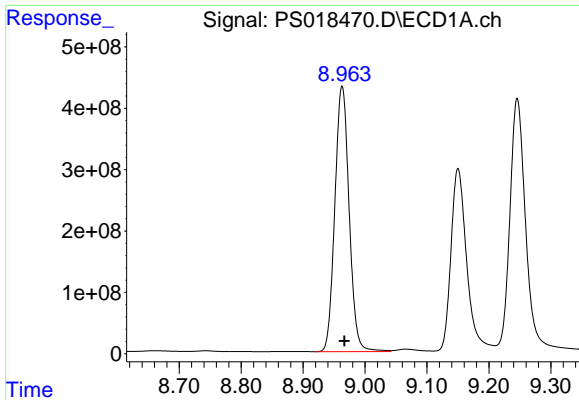
#10 Pentachlorophenol

R.T.: 8.413 min
 Delta R.T.: -0.003 min
 Response: 17045559481
 Conc: 719.87 ng/ml



#10 Pentachlorophenol

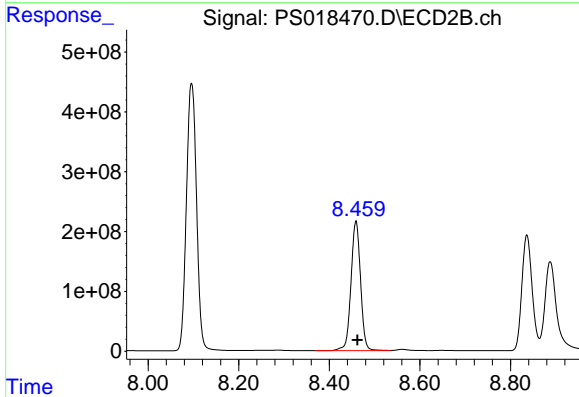
R.T.: 8.096 min
 Delta R.T.: -0.003 min
 Response: 6936410002
 Conc: 727.76 ng/ml



#11 2,4,5-TP (SILVEX)

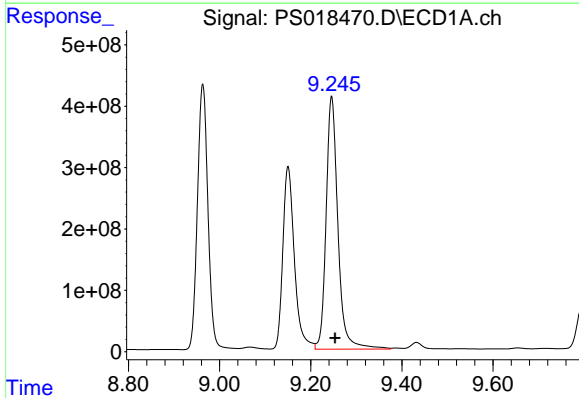
R.T.: 8.963 min
 Delta R.T.: -0.004 min
 Response: 6925422476
 Conc: 727.40 ng/ml

Instrument :
 ECD_S
 ClientSampleId :
 HSTDCCC750



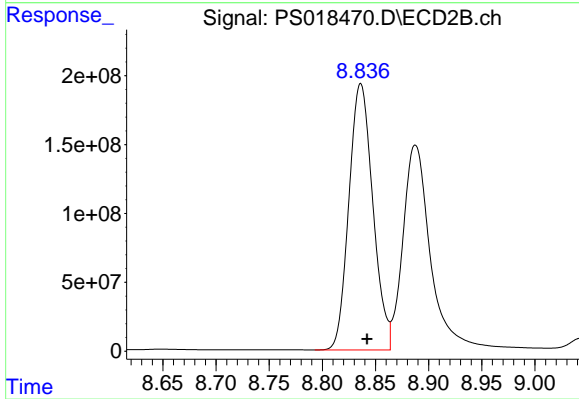
#11 2,4,5-TP (SILVEX)

R.T.: 8.459 min
 Delta R.T.: -0.003 min
 Response: 3179415160
 Conc: 770.10 ng/ml



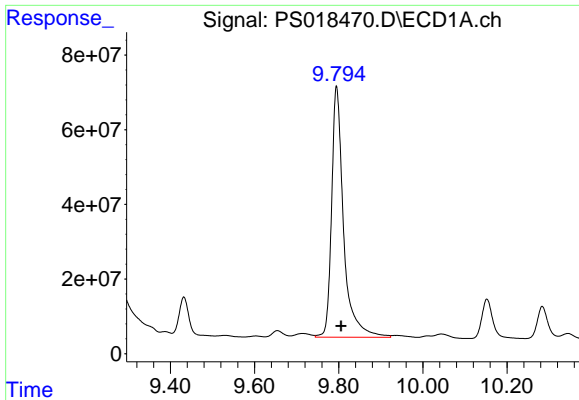
#12 2,4,5-T

R.T.: 9.246 min
 Delta R.T.: -0.008 min
 Response: 7409249389
 Conc: 736.56 ng/ml



#12 2,4,5-T

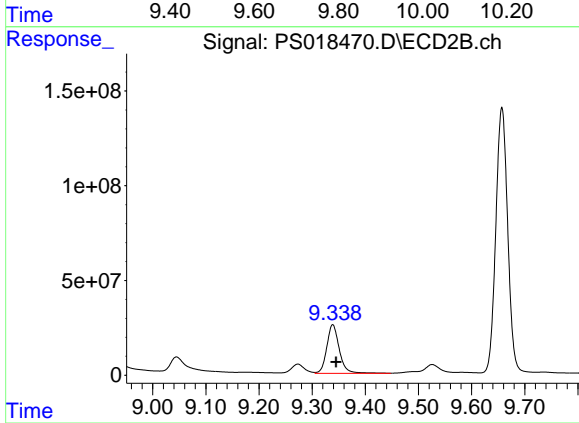
R.T.: 8.836 min
 Delta R.T.: -0.006 min
 Response: 3029148025
 Conc: 769.55 ng/ml



#13 2,4-DB

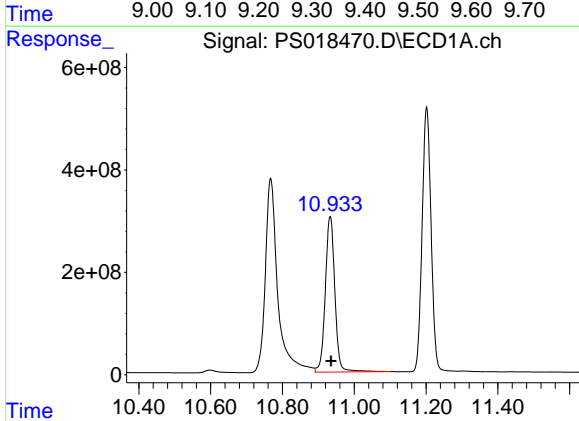
R.T.: 9.795 min
 Delta R.T.: -0.011 min
 Response: 1328406305
 Conc: 764.42 ng/ml

Instrument :
 ECD_S
 ClientSampleId :
 HSTDCCC750



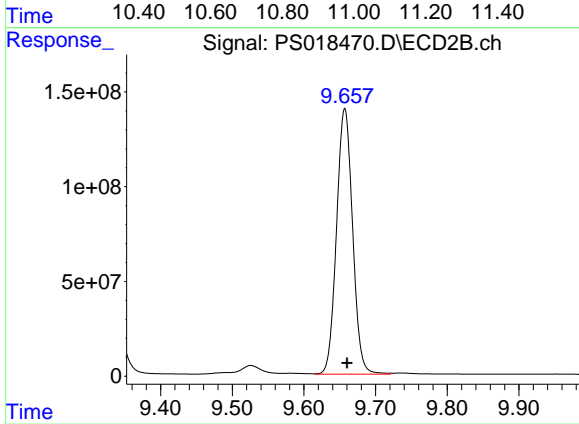
#13 2,4-DB

R.T.: 9.339 min
 Delta R.T.: -0.006 min
 Response: 420560872
 Conc: 778.43 ng/ml



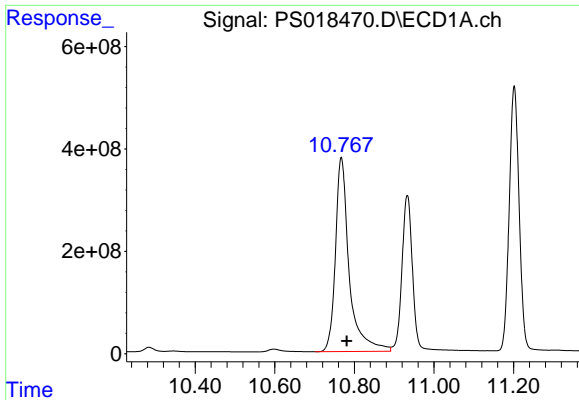
#14 DINOSEB

R.T.: 10.933 min
 Delta R.T.: -0.003 min
 Response: 5604545266
 Conc: 721.39 ng/ml



#14 DINOSEB

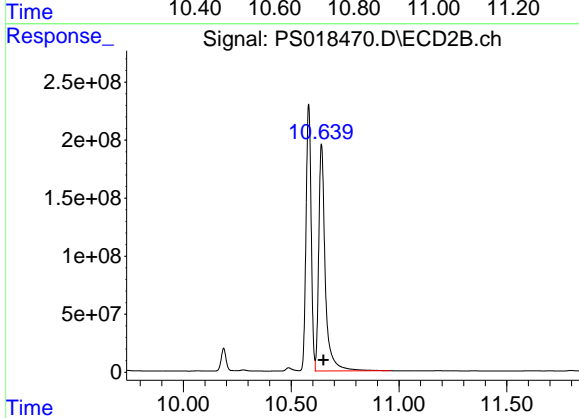
R.T.: 9.657 min
 Delta R.T.: -0.003 min
 Response: 2186169711
 Conc: 752.04 ng/ml



#15 Picloram

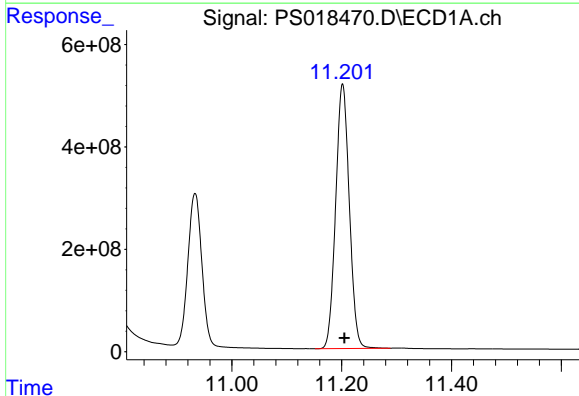
R.T.: 10.767 min
Delta R.T.: -0.014 min
Response: 9097058350
Conc: 715.96 ng/ml

Instrument :
ECD_S
ClientSampleId :
HSTDCCC750



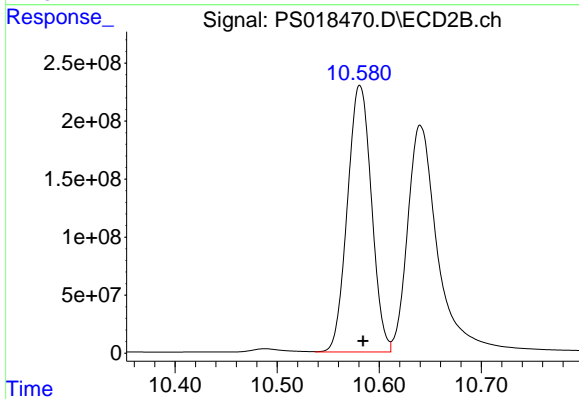
#15 Picloram

R.T.: 10.640 min
Delta R.T.: -0.009 min
Response: 4125160961
Conc: 713.33 ng/ml



#16 DCPA

R.T.: 11.202 min
Delta R.T.: -0.003 min
Response: 8891056808
Conc: 739.37 ng/ml



#16 DCPA

R.T.: 10.581 min
Delta R.T.: -0.003 min
Response: 3760592985
Conc: 757.37 ng/ml