

Data Path : Z:\pestpcbsrv\HPCHEM1\ECD_S\Data\PS030221\
 Data File : PS014106.D
 Signal(s) : Signal #1: ECD1A.ch Signal #2: ECD2B.ch
 Acq On : 02 Mar 2021 09:24
 Operator : DD\AJ
 Sample : HSTDCCC750
 Misc :
 ALS Vial : 3 Sample Multiplier: 1

Instrument :
 ECD_S
 ClientSampleId :
 HSTDCCC750

Integration File signal 1: autoint1.e
 Integration File signal 2: autoint2.e
 Quant Time: Mar 02 18:05:00 2021
 Quant Method : Z:\pestpcbsrv\HPCHEM1\ECD_S\Method\PS021521.M
 Quant Title : 8080.M
 QLast Update : Tue Feb 16 01:39:40 2021
 Response via : Initial Calibration
 Integrator: ChemStation

Volume Inj. : 2 µl
 Signal #1 Phase : Rtx-CLPesticides Signal #2 Phase: Rtx-CLPesticides2
 Signal #1 Info : 30M x 0.32mm x0.5 Signal #2 Info : 30M x 0.32mm x 0.25µm

	Compound	RT#1	RT#2	Resp#1	Resp#2	ng/ml	ng/ml

System Monitoring Compounds							
4) S	2,4-DCAA	7.203	6.901	794.1E6	300.7E6	792.065	786.077
Target Compounds							
1) T	Dalapon	3.027	2.620	785.2E6	349.5E6	673.716	681.107
2) T	3,5-DICHL...	6.422	6.059	1011.1E6	427.9E6	735.158	740.056
3) T	4-Nitroph...	7.039	6.518	355.5E6	171.8E6	697.335	700.998
5) T	DICAMBA	7.393	7.067	3051.6E6	1250.0E6	760.916	766.939
6) T	MCPD	7.560	7.161	227.0E6	101.7E6	77.857	77.788
7) T	MCPA	7.709	7.376	319.6E6	143.2E6	75.812	74.162
8) T	DICHLORPROP	8.083	7.692	755.9E6	318.4E6	747.292	755.272
9) T	2,4-D	8.316	7.990	867.0E6	390.2E6	741.639	743.912
10) T	Pentachlo...	8.622	8.413	11056.2E6	4184.3E6	754.290	765.336
11) T	2,4,5-TP ...	9.170	8.774	4399.3E6	1746.2E6	754.817	774.040
12) T	2,4,5-T	9.458	9.156	4492.1E6	1651.4E6	751.745	756.849
13) T	2,4-DB	10.013	9.663	716.5E6	211.5E6	668.565	719.094
14) T	DINOSEB	11.161	9.988	3512.9E6	1210.6E6	781.153	790.989
15) T	Picloram	11.002	10.989	5444.2E6	2251.1E6	661.308	687.538
16) T	DCPA	11.427	10.915	5612.7E6	2253.3E6	753.921	773.192

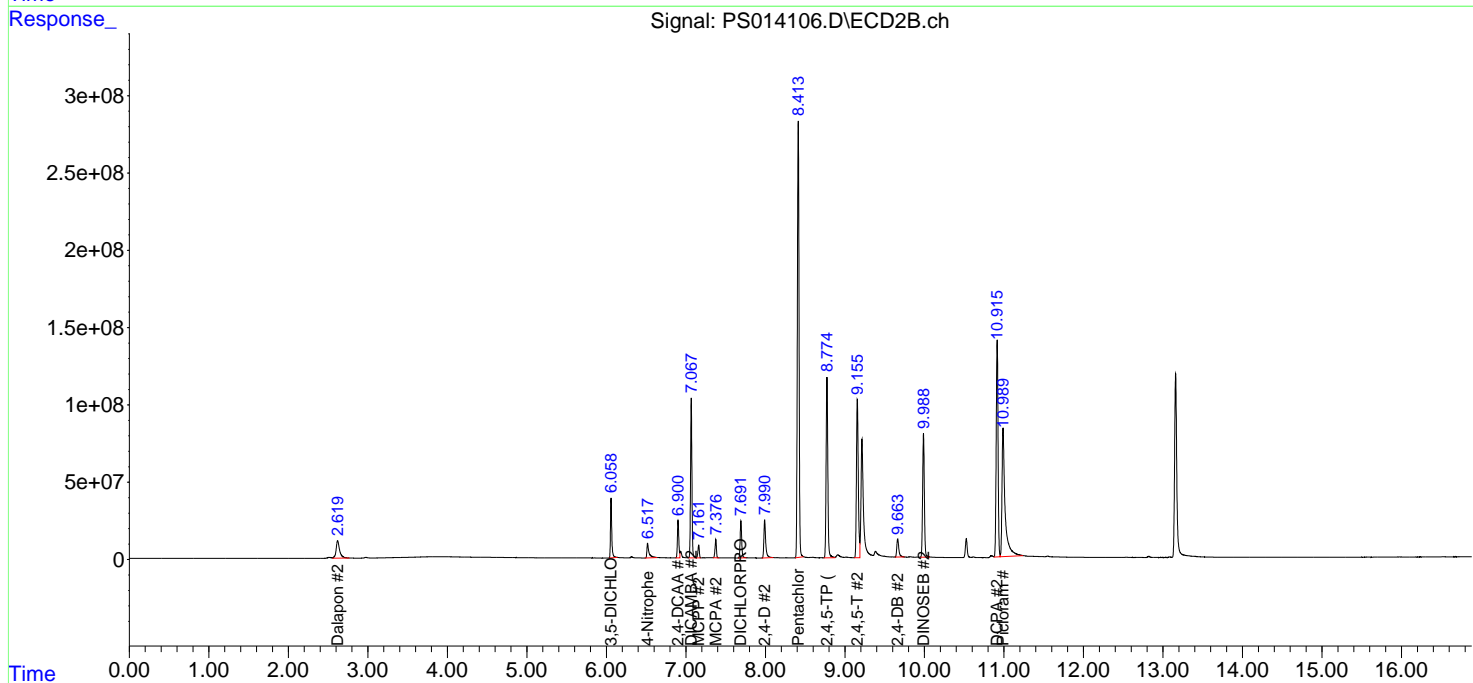
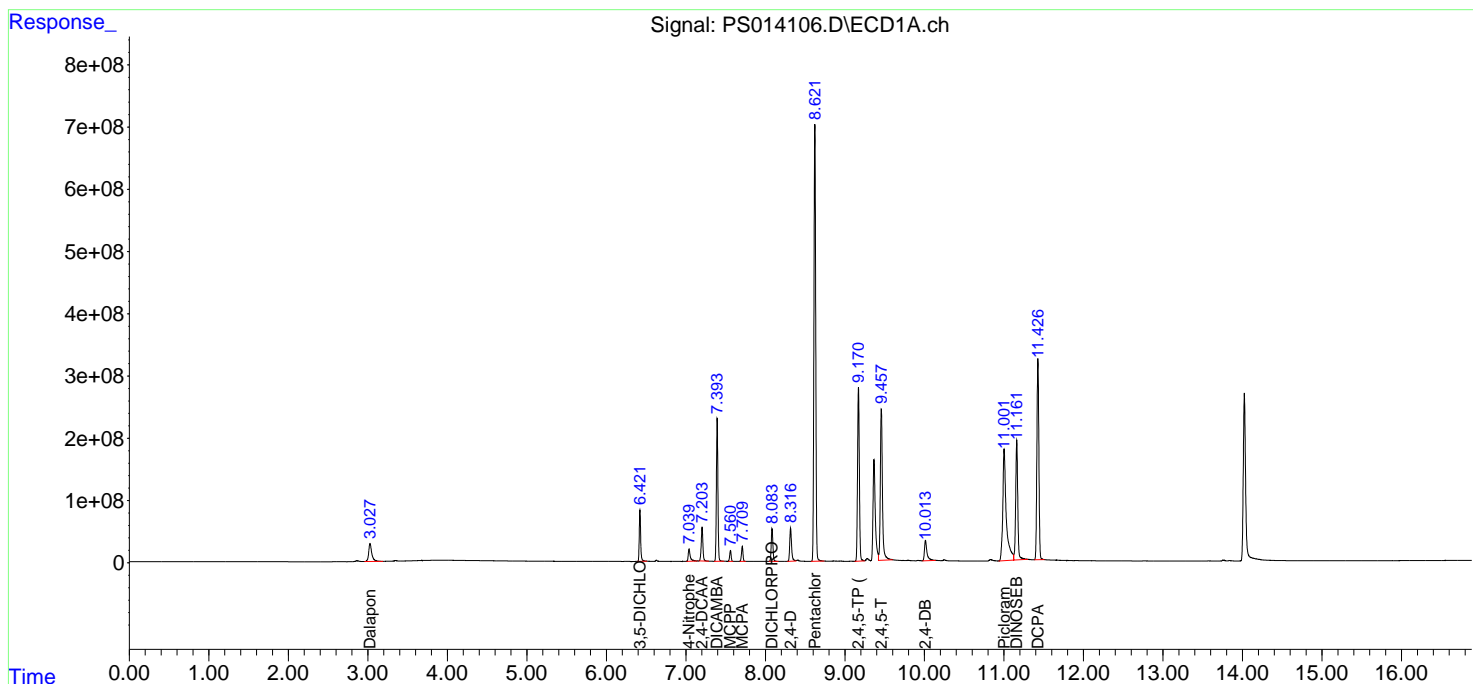
(f)=RT Delta > 1/2 Window (#)=Amounts differ by > 25% (m)=manual int.

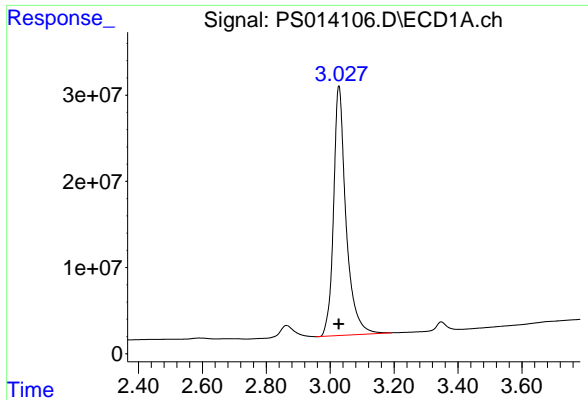
Data Path : Z:\pestpcbsrv\HPCHEM1\ECD_S\Data\PS030221\
 Data File : PS014106.D
 Signal(s) : Signal #1: ECD1A.ch Signal #2: ECD2B.ch
 Acq On : 02 Mar 2021 09:24
 Operator : DD\AJ
 Sample : HSTDCCC750
 Misc :
 ALS Vial : 3 Sample Multiplier: 1

Instrument :
 ECD_S
 ClientSampleId :
 HSTDCCC750

Integration File signal 1: autoint1.e
 Integration File signal 2: autoint2.e
 Quant Time: Mar 02 18:05:00 2021
 Quant Method : Z:\pestpcbsrv\HPCHEM1\ECD_S\Method\PS021521.M
 Quant Title : 8080.M
 QLast Update : Tue Feb 16 01:39:40 2021
 Response via : Initial Calibration
 Integrator: ChemStation

Volume Inj. : 2 µl
 Signal #1 Phase : Rtx-CLPesticides Signal #2 Phase: Rtx-CLPesticides2
 Signal #1 Info : 30M x 0.32mm x0.5 Signal #2 Info : 30M x 0.32mm x 0.25µm

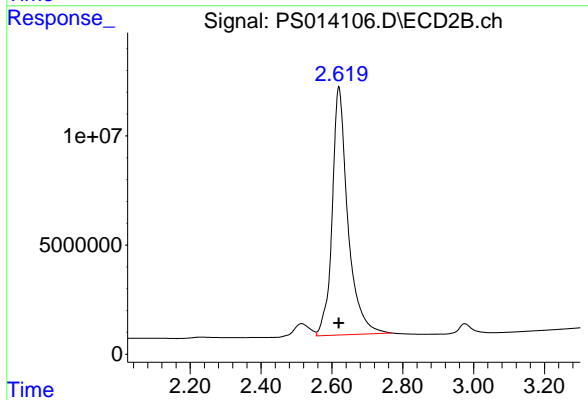




#1 Dalapon

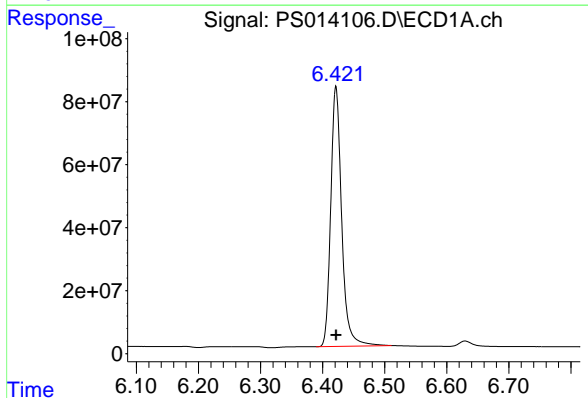
R.T.: 3.027 min
 Delta R.T.: 0.000 min
 Response: 785218139
 Conc: 673.72 ng/ml

Instrument :
 ECD_S
 ClientSampleId :
 HSTDCCC750



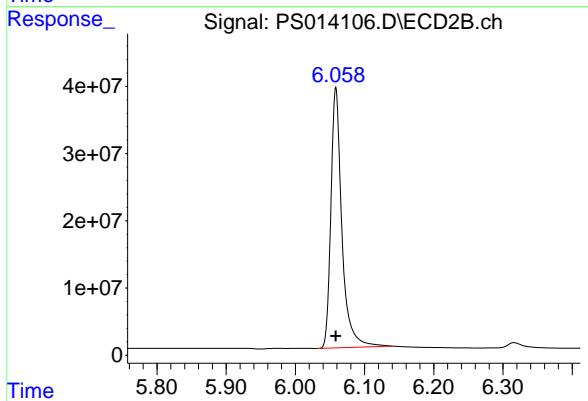
#1 Dalapon

R.T.: 2.620 min
 Delta R.T.: 0.000 min
 Response: 349544698
 Conc: 681.11 ng/ml



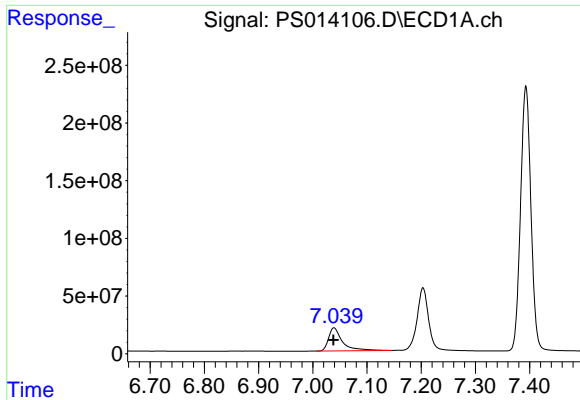
#2 3,5-DICHLOROBENZOIC ACID

R.T.: 6.422 min
 Delta R.T.: 0.000 min
 Response: 1011093818
 Conc: 735.16 ng/ml



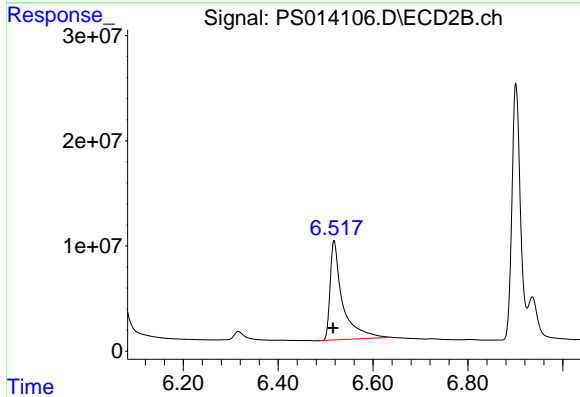
#2 3,5-DICHLOROBENZOIC ACID

R.T.: 6.059 min
 Delta R.T.: 0.000 min
 Response: 427940770
 Conc: 740.06 ng/ml

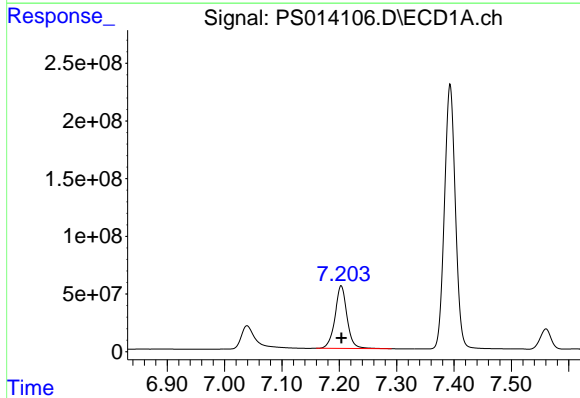


#3 4-Nitrophenol
R.T.: 7.039 min
Delta R.T.: 0.001 min
Response: 355494817
Conc: 697.34 ng/ml

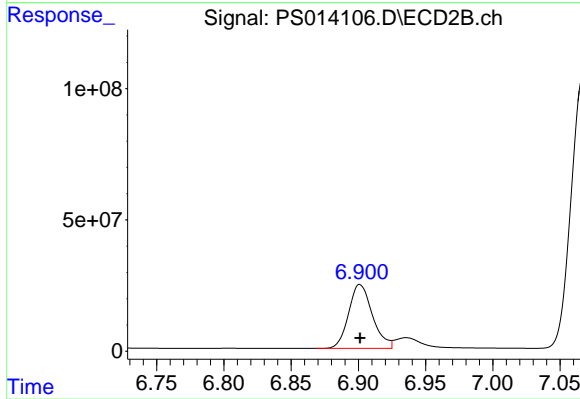
Instrument :
ECD_S
ClientSampleId :
HSTDCCC750



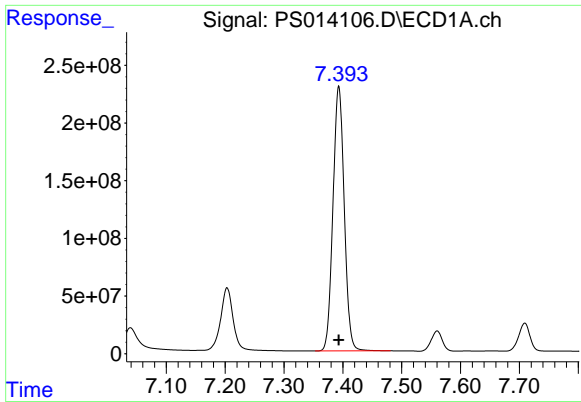
#3 4-Nitrophenol
R.T.: 6.518 min
Delta R.T.: 0.002 min
Response: 171809873
Conc: 701.00 ng/ml



#4 2,4-DCAA
R.T.: 7.203 min
Delta R.T.: 0.000 min
Response: 794053655
Conc: 792.06 ng/ml



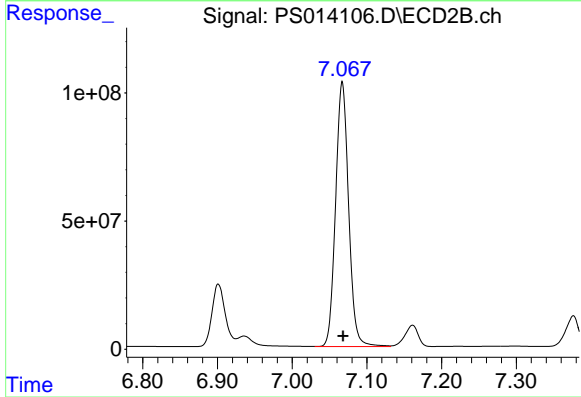
#4 2,4-DCAA
R.T.: 6.901 min
Delta R.T.: 0.000 min
Response: 300669436
Conc: 786.08 ng/ml



#5 DICAMBA

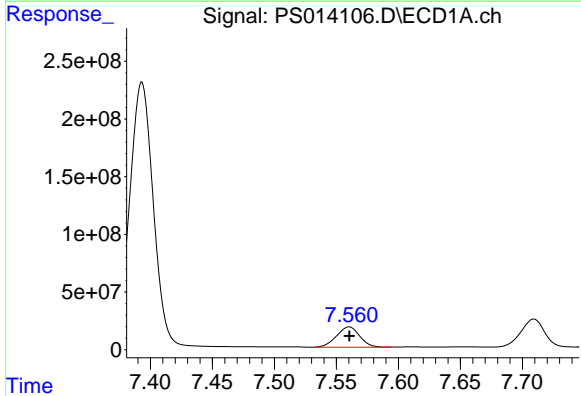
R.T.: 7.393 min
 Delta R.T.: 0.000 min
 Response: 3051572580
 Conc: 760.92 ng/ml

Instrument :
 ECD_S
 ClientSampleId :
 HSTDCCC750



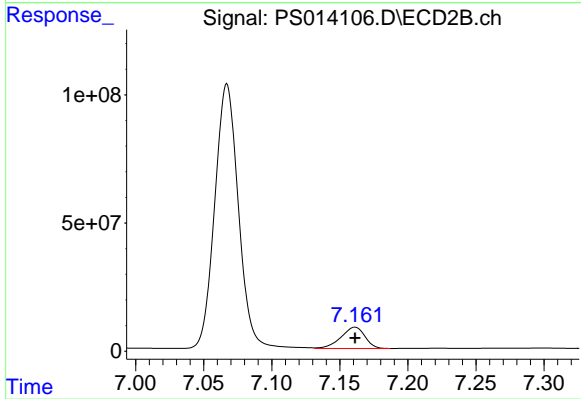
#5 DICAMBA

R.T.: 7.067 min
 Delta R.T.: 0.000 min
 Response: 1249991313
 Conc: 766.94 ng/ml



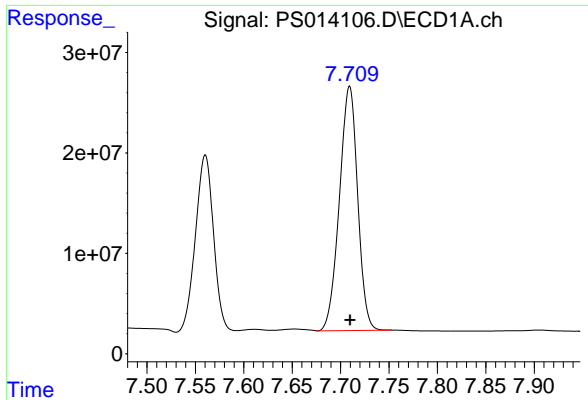
#6 MCPP

R.T.: 7.560 min
 Delta R.T.: 0.000 min
 Response: 227022631
 Conc: 77.86 ug/ml



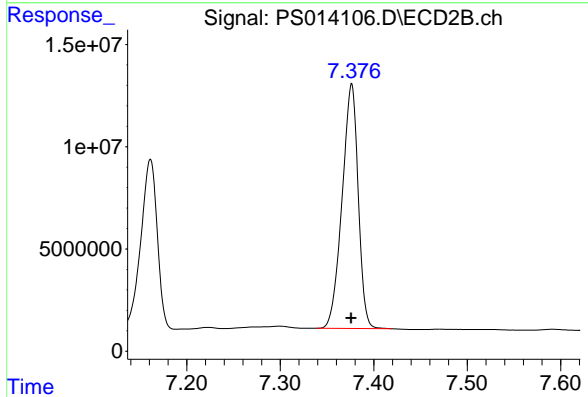
#6 MCPP

R.T.: 7.161 min
 Delta R.T.: 0.000 min
 Response: 101713233
 Conc: 77.79 ug/ml

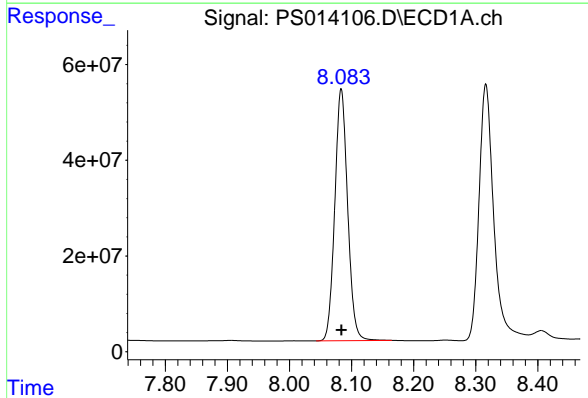


#7 MCPA
 R.T.: 7.709 min
 Delta R.T.: 0.000 min
 Response: 319595451
 Conc: 75.81 ug/ml

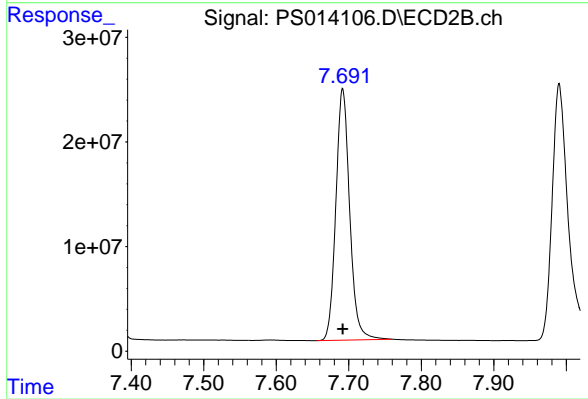
Instrument :
 ECD_S
 ClientSampleId :
 HSTDCCC750



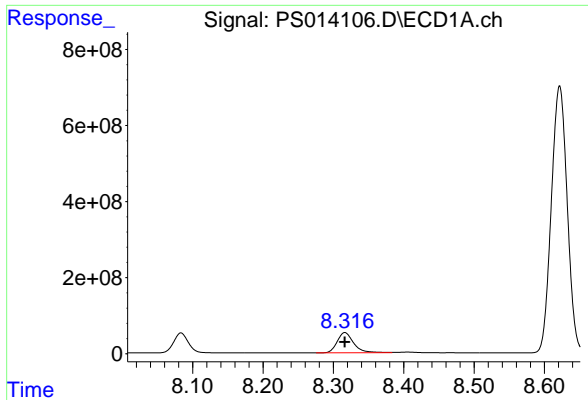
#7 MCPA
 R.T.: 7.376 min
 Delta R.T.: 0.000 min
 Response: 143162058
 Conc: 74.16 ug/ml



#8 DICHLORPROP
 R.T.: 8.083 min
 Delta R.T.: 0.000 min
 Response: 755888013
 Conc: 747.29 ng/ml

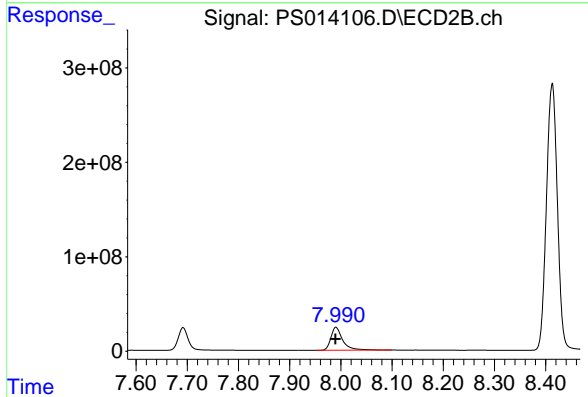


#8 DICHLORPROP
 R.T.: 7.692 min
 Delta R.T.: 0.000 min
 Response: 318364574
 Conc: 755.27 ng/ml

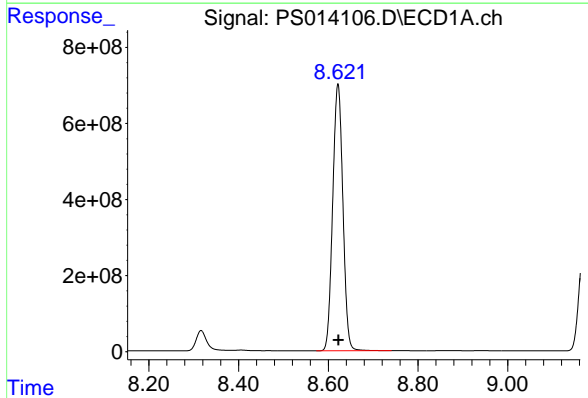


#9 2,4-D
 R.T.: 8.316 min
 Delta R.T.: 0.000 min
 Response: 867001572
 Conc: 741.64 ng/ml

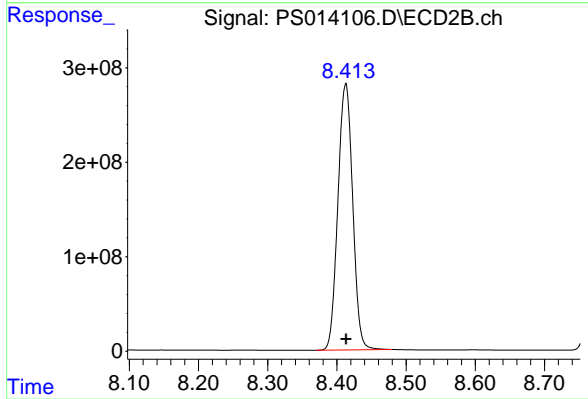
Instrument :
 ECD_S
 ClientSampleId :
 HSTDCCC750



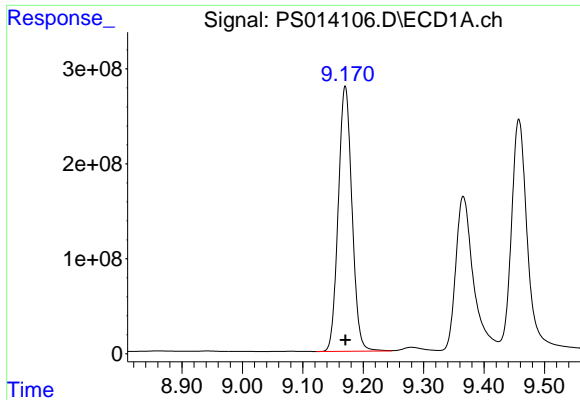
#9 2,4-D
 R.T.: 7.990 min
 Delta R.T.: 0.000 min
 Response: 390218596
 Conc: 743.91 ng/ml



#10 Pentachlorophenol
 R.T.: 8.622 min
 Delta R.T.: 0.000 min
 Response: 11056203428
 Conc: 754.29 ng/ml

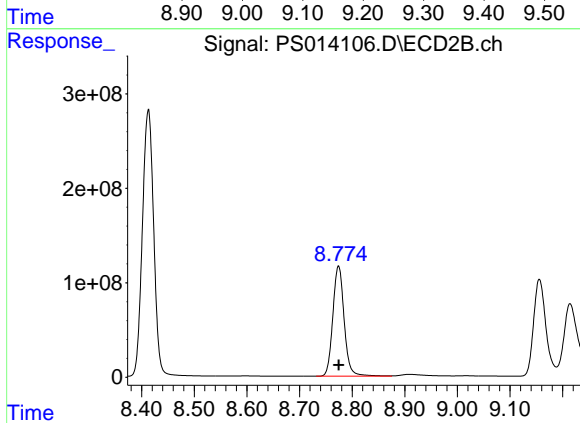


#10 Pentachlorophenol
 R.T.: 8.413 min
 Delta R.T.: 0.000 min
 Response: 4184276581
 Conc: 765.34 ng/ml

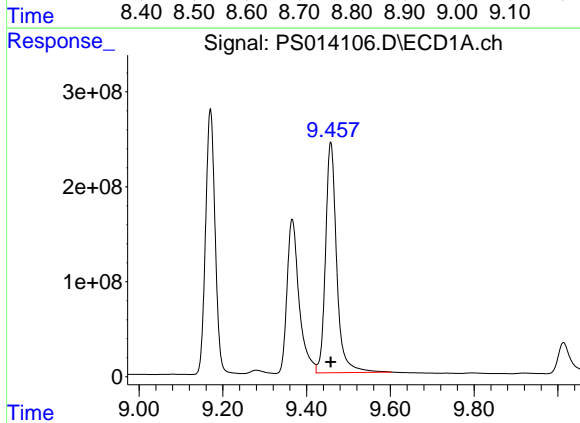


#11 2,4,5-TP (SILVEX)
 R.T.: 9.170 min
 Delta R.T.: 0.000 min
 Response: 4399254751
 Conc: 754.82 ng/ml

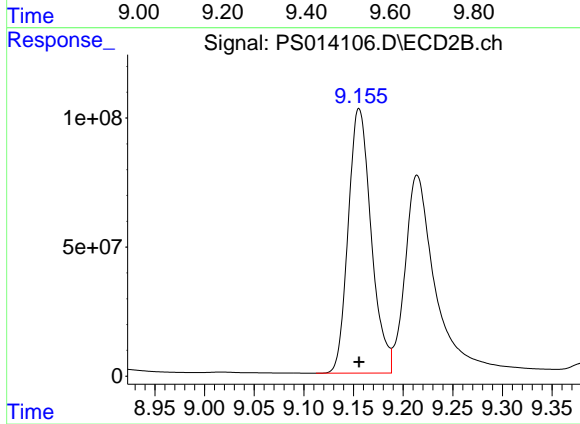
Instrument :
 ECD_S
 ClientSampleId :
 HSTDCCC750



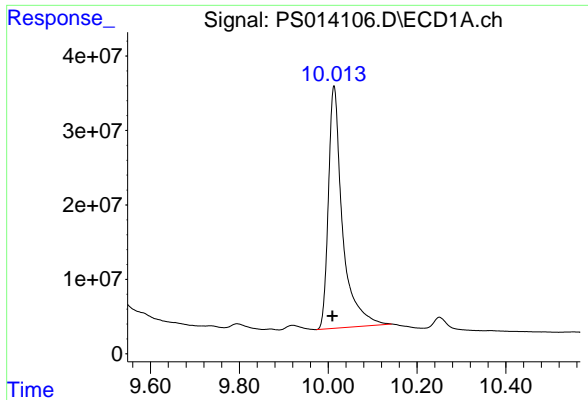
#11 2,4,5-TP (SILVEX)
 R.T.: 8.774 min
 Delta R.T.: 0.000 min
 Response: 1746224409
 Conc: 774.04 ng/ml



#12 2,4,5-T
 R.T.: 9.458 min
 Delta R.T.: 0.000 min
 Response: 4492103216
 Conc: 751.75 ng/ml

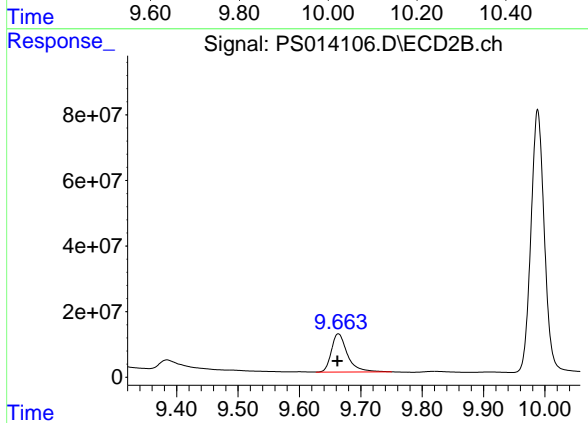


#12 2,4,5-T
 R.T.: 9.156 min
 Delta R.T.: 0.000 min
 Response: 1651437087
 Conc: 756.85 ng/ml

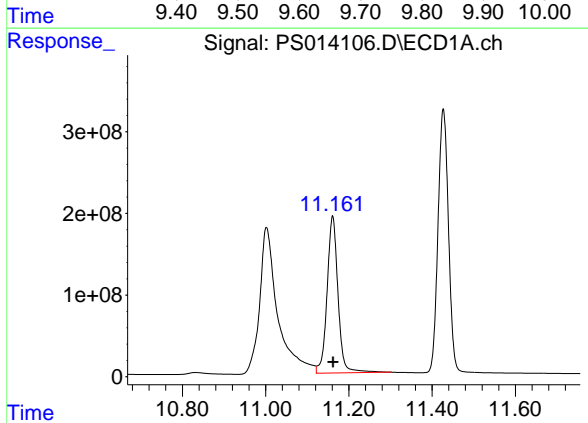


#13 2,4-DB
 R.T.: 10.013 min
 Delta R.T.: 0.004 min
 Response: 716509047
 Conc: 668.56 ng/ml

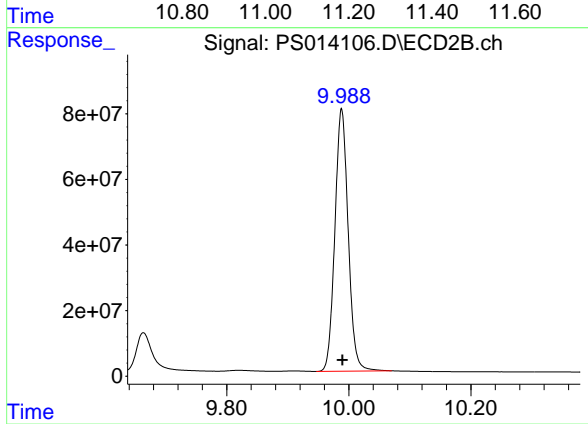
Instrument :
 ECD_S
 ClientSampleId :
 HSTDCCC750



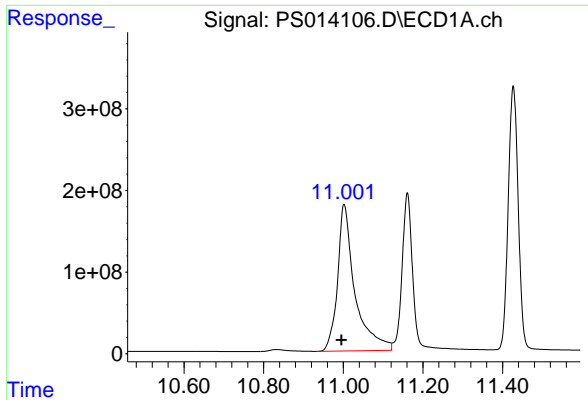
#13 2,4-DB
 R.T.: 9.663 min
 Delta R.T.: 0.002 min
 Response: 211544909
 Conc: 719.09 ng/ml



#14 DINOSEB
 R.T.: 11.161 min
 Delta R.T.: -0.001 min
 Response: 3512868977
 Conc: 781.15 ng/ml



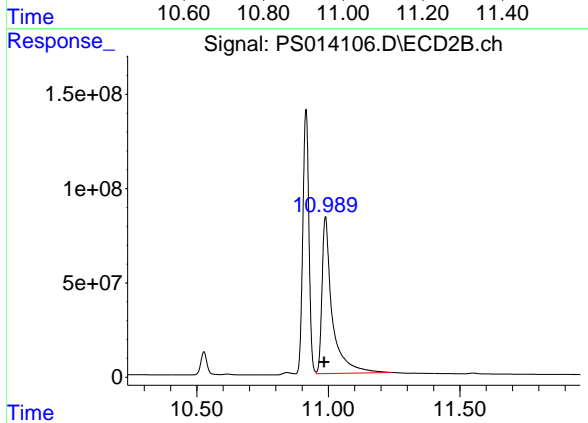
#14 DINOSEB
 R.T.: 9.988 min
 Delta R.T.: -0.001 min
 Response: 1210567444
 Conc: 790.99 ng/ml



#15 Picloram

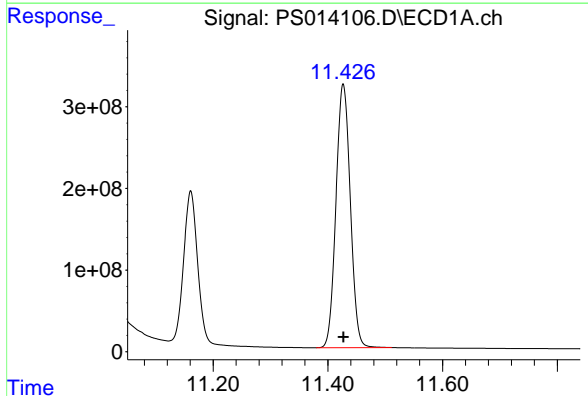
R.T.: 11.002 min
 Delta R.T.: 0.007 min
 Response: 5444200124
 Conc: 661.31 ng/ml

Instrument :
 ECD_S
 ClientSampleId :
 HSTDCCC750



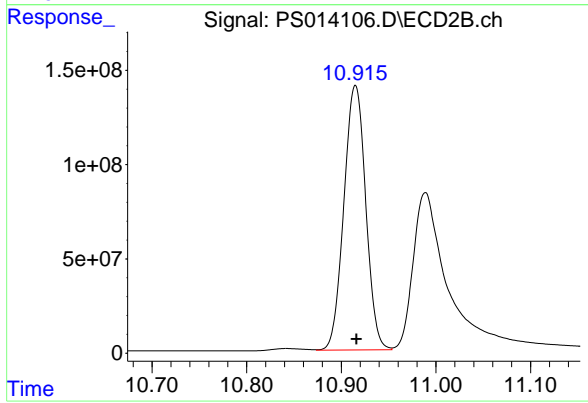
#15 Picloram

R.T.: 10.989 min
 Delta R.T.: 0.005 min
 Response: 2251073381
 Conc: 687.54 ng/ml



#16 DCPA

R.T.: 11.427 min
 Delta R.T.: 0.000 min
 Response: 5612722667
 Conc: 753.92 ng/ml



#16 DCPA

R.T.: 10.915 min
 Delta R.T.: 0.000 min
 Response: 2253321391
 Conc: 773.19 ng/ml