

Data Path : Z:\pestpcbsrv\HPCHEM1\ECD\_S\Data\PS030223\  
 Data File : PS022290.D  
 Signal(s) : Signal #1: ECD1A.ch Signal #2: ECD2B.ch  
 Acq On : 02 Mar 2023 12:47  
 Operator : AR\AJ  
 Sample : 01727-01MS  
 Misc :  
 ALS Vial : 5 Sample Multiplier: 1

Instrument :  
 ECD\_S  
 ClientSampleId :

Integration File signal 1: autoint1.e  
 Integration File signal 2: autoint2.e  
 Quant Time: Mar 02 21:35:33 2023  
 Quant Method : Z:\pestpcbsrv\HPCHEM1\ECD\_S\Method\PS022023.M  
 Quant Title : 8080.M  
 QLast Update : Mon Feb 20 13:26:02 2023  
 Response via : Initial Calibration  
 Integrator: ChemStation

Volume Inj. : 2 µl  
 Signal #1 Phase : Rtx-CLPesticides Signal #2 Phase: Rtx-CLPesticides2  
 Signal #1 Info : 30M x 0.32mm x0.5 Signal #2 Info : 30M x 0.32mm x 0.25µm

	Compound	RT#1	RT#2	Resp#1	Resp#2	ng/ml	ng/ml
-----							
System Monitoring Compounds							
4) S	2,4-DCAA	6.296	6.719	1448.3E6	986.4E6	584.294	469.924
Target Compounds							
1) T	Dalapon	2.408	2.483	1077.8E6	1909.5E6	339.973	592.978 #
2) T	3,5-DICHL...	5.679	5.921	1237.4E6	1075.5E6	332.860	347.789
3) T	4-Nitroph...	6.165	6.375	325.1E6	13640492	255.513	10.213 #
5) T	DICAMBA	6.433	6.878	3723.4E6	3463.0E6	358.823	358.339
6) T	MCP P	6.607	6.973	815.8E6	277.7E6	106.923	36.370 #
7) T	MCPA	6.704	7.180	319.3E6	1022.6E6	30.665	100.325 #
8) T	DICHLORPROP	7.017	7.502	988.2E6	1349.8E6	365.920	549.060 #
9) T	2,4-D	7.219	7.788	1510.9E6	1032.0E6	460.818	356.398
10) T	Pentachlo...	7.440	8.207	3205.4E6	2403.8E6	89.032	74.187
11) T	2,4,5-TP ...	7.966	8.570	4505.7E6	3825.2E6	292.155	284.380
12) T	2,4,5-T	8.225	8.946	5021.2E6	4044.0E6	289.424	336.239
13) T	2,4-DB	8.731	9.452	1040.3E6	379.0E6	383.750	228.279 #
14) T	DINOSEB	9.725f	9.765	530.4E6	204.1E6	38.594	21.394 #
15) T	Picloram	9.612	10.743	9329.5E6	6475.2E6	378.723	330.265
16) T	DCPA	10.042	10.699	8641.1E6	7816.8E6	405.712	499.642
-----							

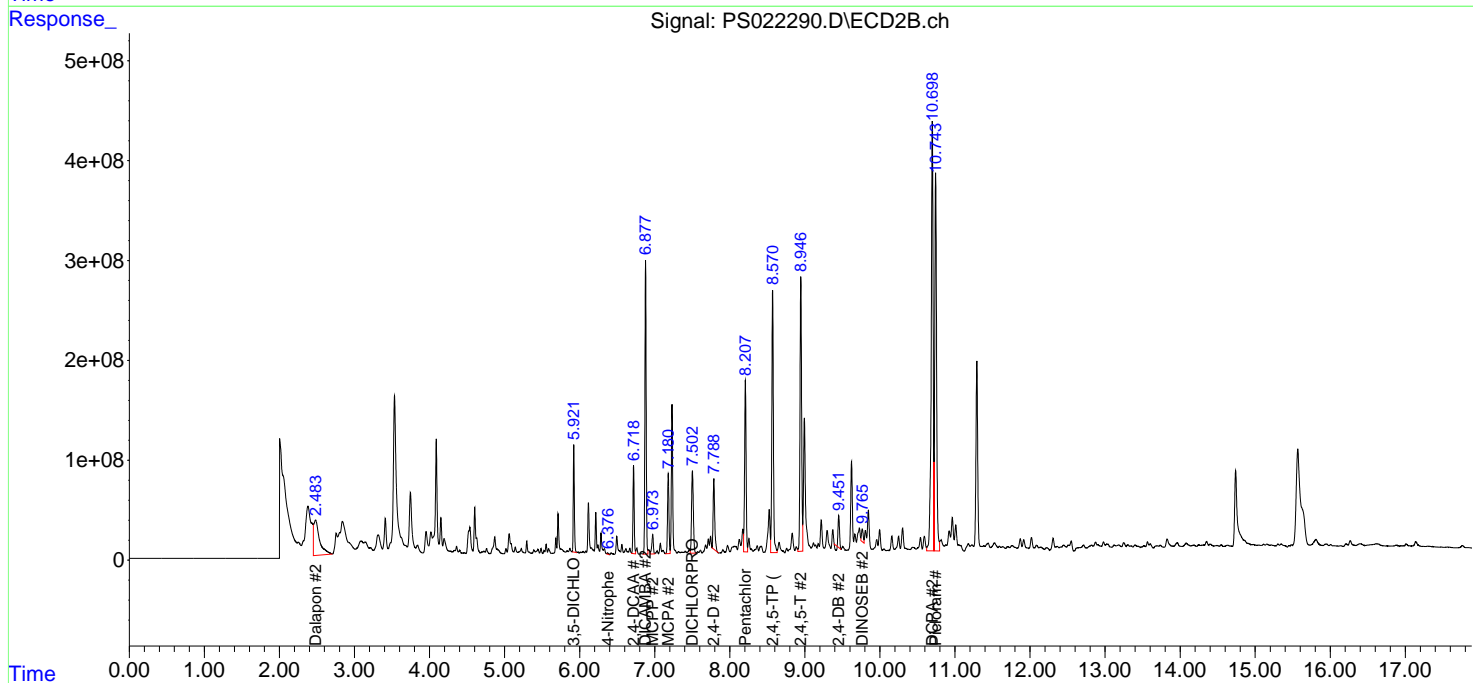
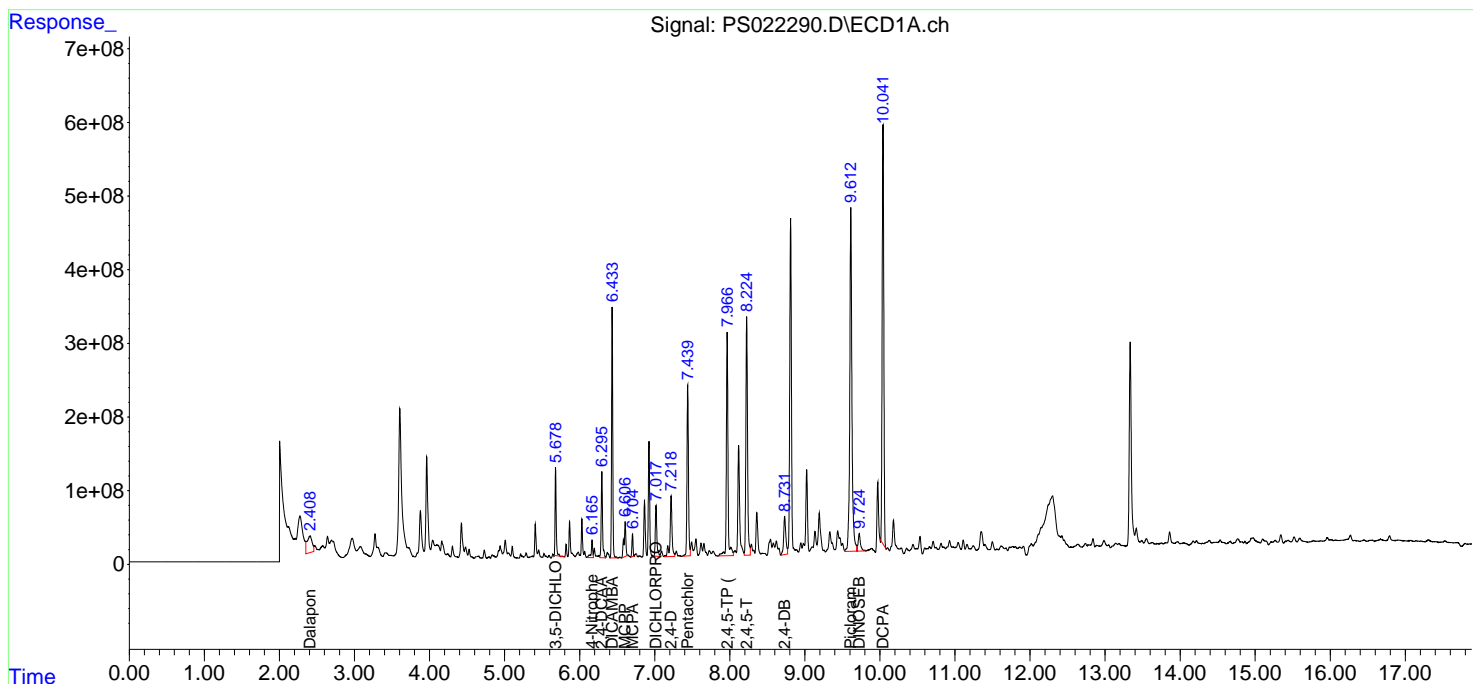
(f)=RT Delta > 1/2 Window (#)=Amounts differ by > 25% (m)=manual int.

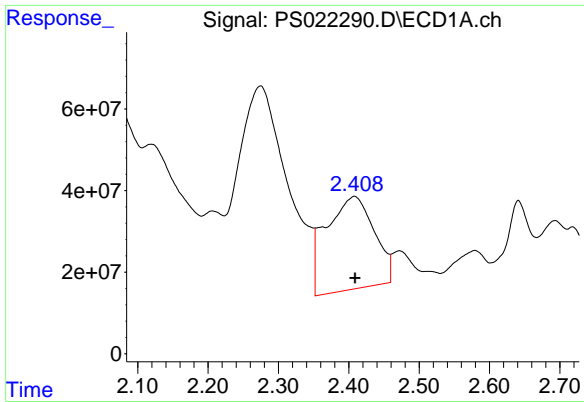
Data Path : Z:\pestpcbsrv\HPCHEM1\ECD\_S\Data\PS030223\  
 Data File : PS022290.D  
 Signal(s) : Signal #1: ECD1A.ch Signal #2: ECD2B.ch  
 Acq On : 02 Mar 2023 12:47  
 Operator : AR\AJ  
 Sample : 01727-01MS  
 Misc :  
 ALS Vial : 5 Sample Multiplier: 1

Instrument :  
 ECD\_S  
 ClientSampleId :

Integration File signal 1: autoint1.e  
 Integration File signal 2: autoint2.e  
 Quant Time: Mar 02 21:35:33 2023  
 Quant Method : Z:\pestpcbsrv\HPCHEM1\ECD\_S\Method\PS022203.M  
 Quant Title : 8080.M  
 QLast Update : Mon Feb 20 13:26:02 2023  
 Response via : Initial Calibration  
 Integrator: ChemStation

Volume Inj. : 2 µl  
 Signal #1 Phase : Rtx-CLPesticides Signal #2 Phase: Rtx-CLPesticides2  
 Signal #1 Info : 30M x 0.32mm x0.5 Signal #2 Info : 30M x 0.32mm x 0.25µm

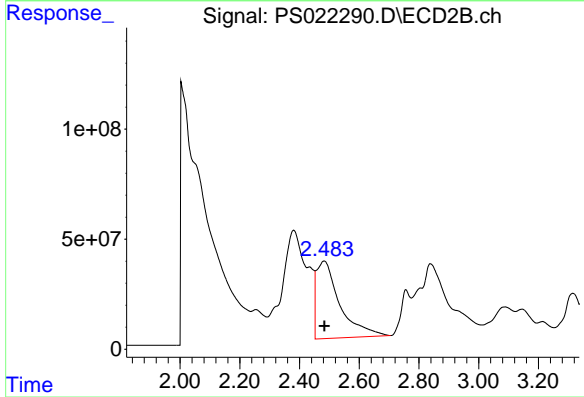




#1 Dalapon

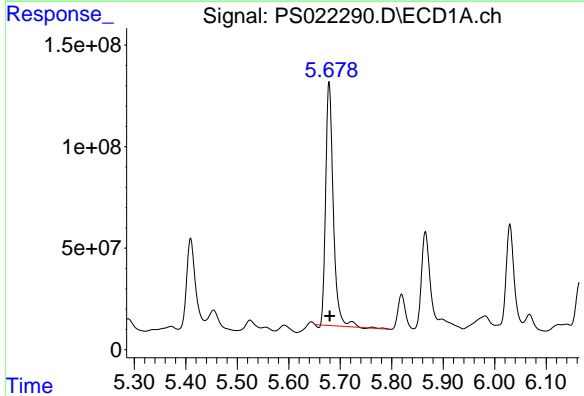
R.T.: 2.408 min  
 Delta R.T.: -0.001 min  
 Response: 1077809005  
 Conc: 339.97 ng/ml

Instrument :  
 ECD\_S  
 ClientSampleId :



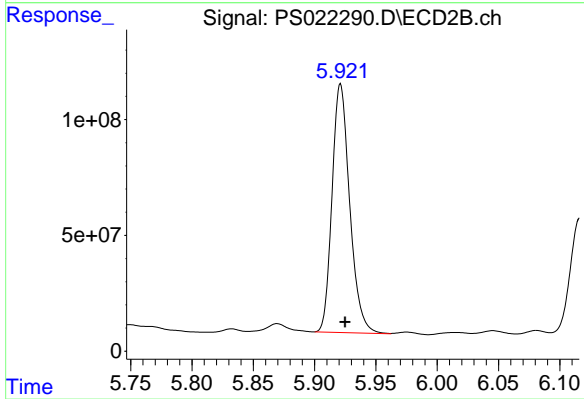
#1 Dalapon

R.T.: 2.483 min  
 Delta R.T.: 0.000 min  
 Response: 1909480273  
 Conc: 592.98 ng/ml



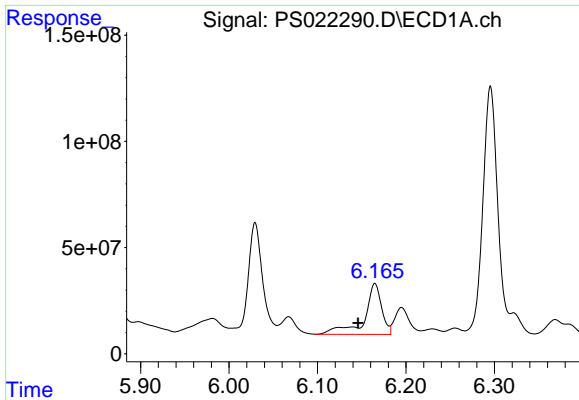
#2 3,5-DICHLOROBENZOIC ACID

R.T.: 5.679 min  
 Delta R.T.: 0.000 min  
 Response: 1237371967  
 Conc: 332.86 ng/ml



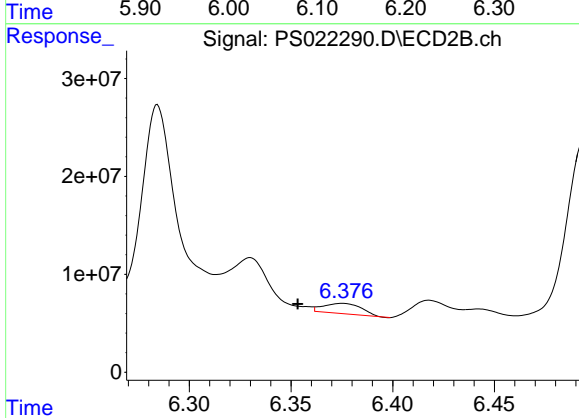
#2 3,5-DICHLOROBENZOIC ACID

R.T.: 5.921 min  
 Delta R.T.: -0.004 min  
 Response: 1075478346  
 Conc: 347.79 ng/ml

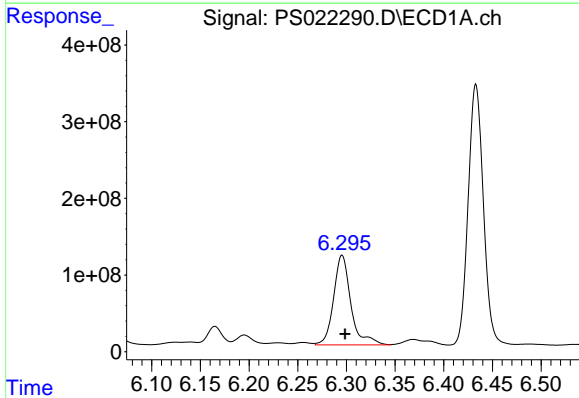


#3 4-Nitrophenol  
 R.T.: 6.165 min  
 Delta R.T.: 0.019 min  
 Response: 325144926  
 Conc: 255.51 ng/ml

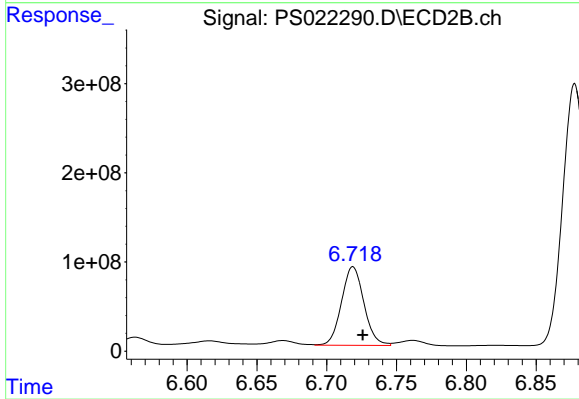
Instrument :  
 ECD\_S  
 ClientSampleId :



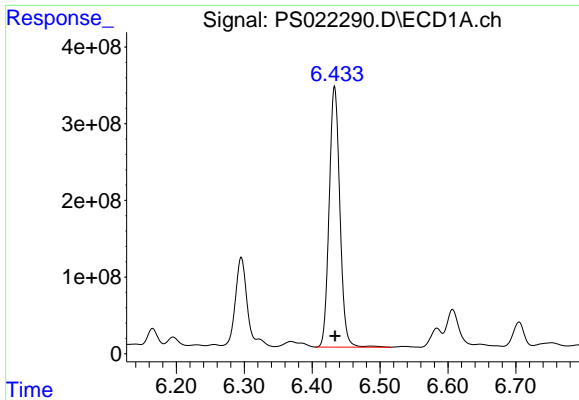
#3 4-Nitrophenol  
 R.T.: 6.375 min  
 Delta R.T.: 0.022 min  
 Response: 13640492  
 Conc: 10.21 ng/ml



#4 2,4-DCAA  
 R.T.: 6.296 min  
 Delta R.T.: -0.003 min  
 Response: 1448282989  
 Conc: 584.29 ng/ml



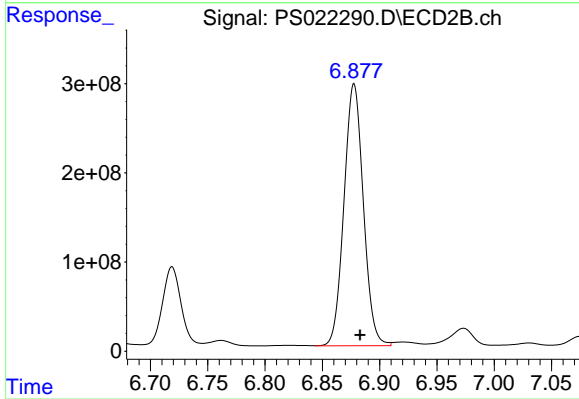
#4 2,4-DCAA  
 R.T.: 6.719 min  
 Delta R.T.: -0.007 min  
 Response: 986352642  
 Conc: 469.92 ng/ml



#5 DICAMBA

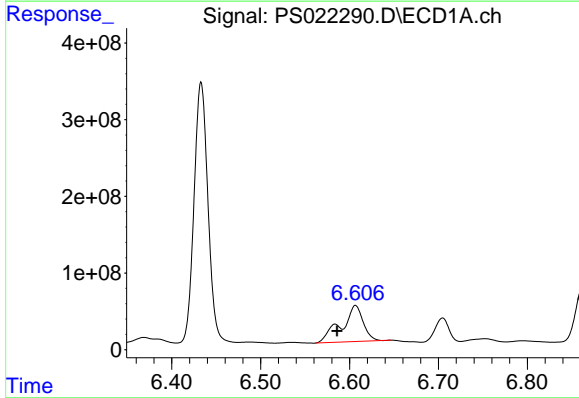
R.T.: 6.433 min  
 Delta R.T.: 0.000 min  
 Response: 3723353146  
 Conc: 358.82 ng/ml

Instrument :  
 ECD\_S  
 ClientSampleId :



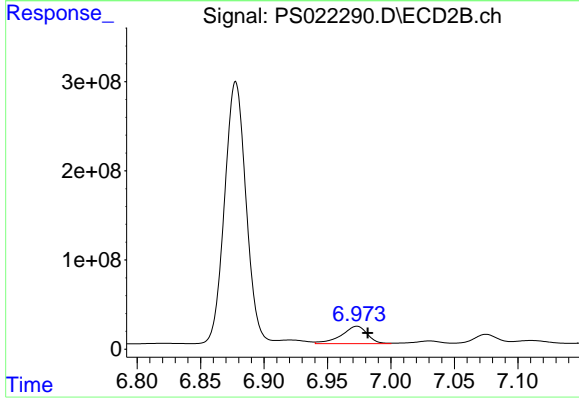
#5 DICAMBA

R.T.: 6.878 min  
 Delta R.T.: -0.005 min  
 Response: 3462975687  
 Conc: 358.34 ng/ml



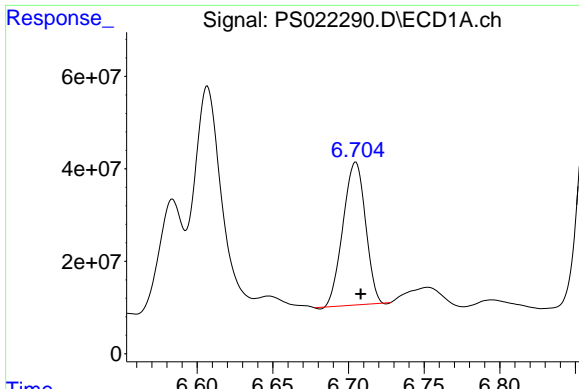
#6 MCP

R.T.: 6.607 min  
 Delta R.T.: 0.021 min  
 Response: 815846897  
 Conc: 106.92 ug/ml



#6 MCP

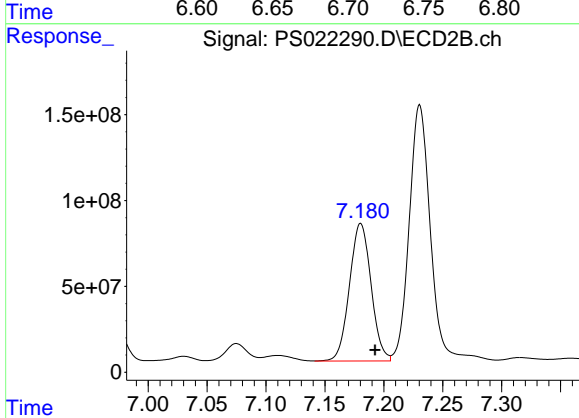
R.T.: 6.973 min  
 Delta R.T.: -0.009 min  
 Response: 277672723  
 Conc: 36.37 ug/ml



#7 MCPA

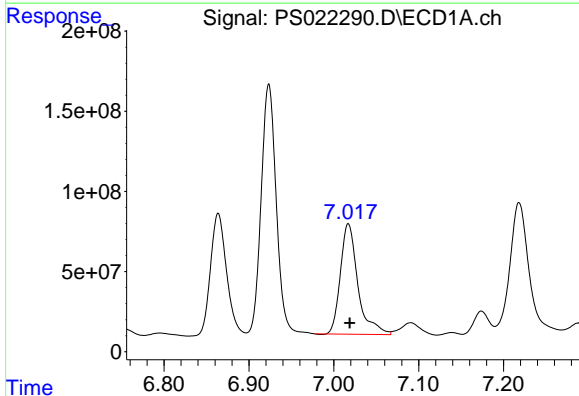
R.T.: 6.704 min  
 Delta R.T.: -0.004 min  
 Response: 319345170  
 Conc: 30.66 ug/ml

Instrument :  
 ECD\_S  
 ClientSampleId :



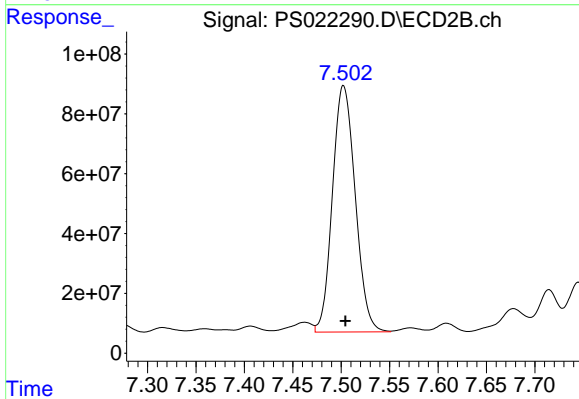
#7 MCPA

R.T.: 7.180 min  
 Delta R.T.: -0.012 min  
 Response: 1022575179  
 Conc: 100.33 ug/ml



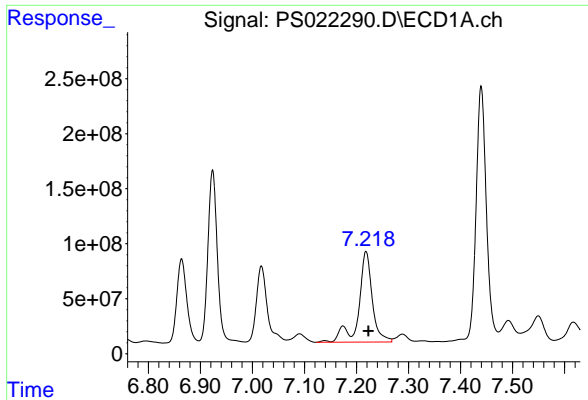
#8 DICHLORPROP

R.T.: 7.017 min  
 Delta R.T.: -0.001 min  
 Response: 988210052  
 Conc: 365.92 ng/ml



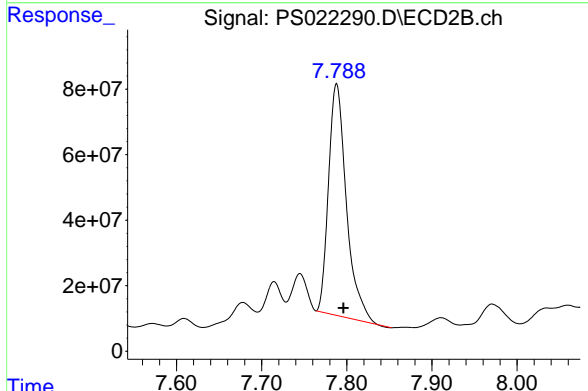
#8 DICHLORPROP

R.T.: 7.502 min  
 Delta R.T.: -0.002 min  
 Response: 1349824390  
 Conc: 549.06 ng/ml

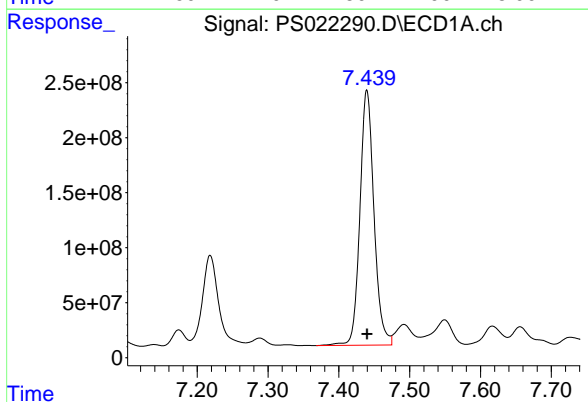


#9 2,4-D  
 R.T.: 7.219 min  
 Delta R.T.: -0.004 min  
 Response: 1510896547  
 Conc: 460.82 ng/ml

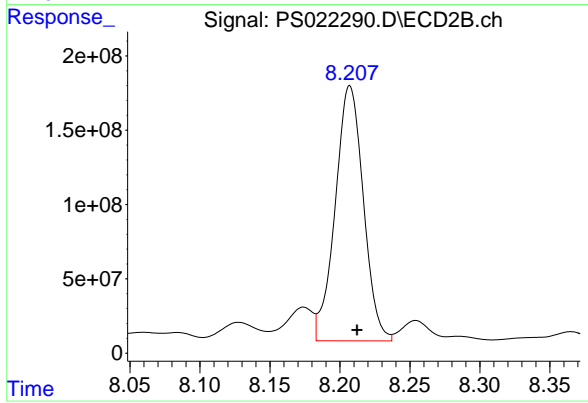
Instrument :  
 ECD\_S  
 ClientSampleId :



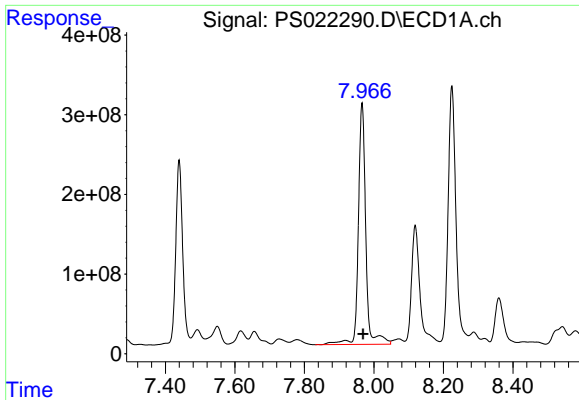
#9 2,4-D  
 R.T.: 7.788 min  
 Delta R.T.: -0.008 min  
 Response: 1032028499  
 Conc: 356.40 ng/ml



#10 Pentachlorophenol  
 R.T.: 7.440 min  
 Delta R.T.: 0.000 min  
 Response: 3205415491  
 Conc: 89.03 ng/ml



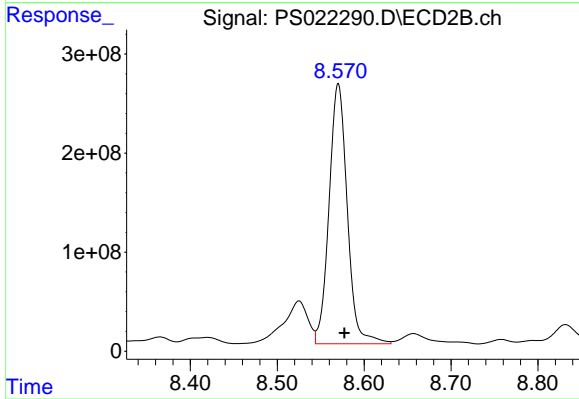
#10 Pentachlorophenol  
 R.T.: 8.207 min  
 Delta R.T.: -0.005 min  
 Response: 2403802466  
 Conc: 74.19 ng/ml



#11 2,4,5-TP (SILVEX)

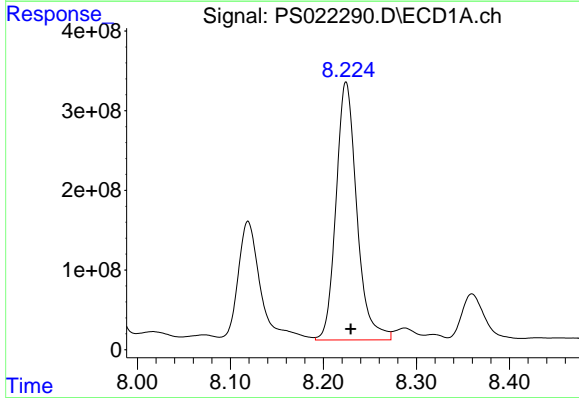
R.T.: 7.966 min  
 Delta R.T.: -0.003 min  
 Response: 4505741634  
 Conc: 292.15 ng/ml

Instrument :  
 ECD\_S  
 ClientSampleId :



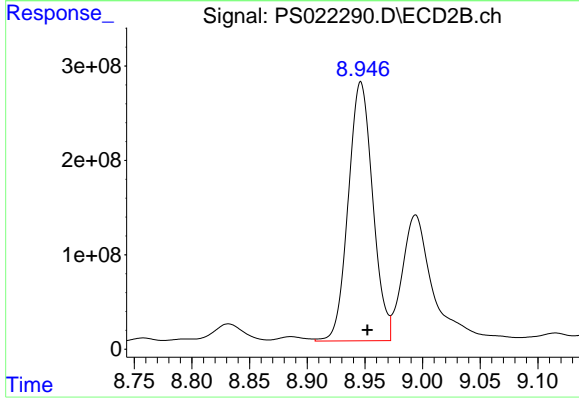
#11 2,4,5-TP (SILVEX)

R.T.: 8.570 min  
 Delta R.T.: -0.007 min  
 Response: 3825223058  
 Conc: 284.38 ng/ml



#12 2,4,5-T

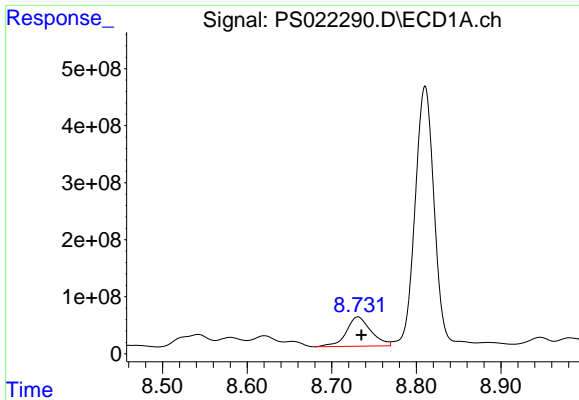
R.T.: 8.225 min  
 Delta R.T.: -0.005 min  
 Response: 5021238342  
 Conc: 289.42 ng/ml



#12 2,4,5-T

R.T.: 8.946 min  
 Delta R.T.: -0.006 min  
 Response: 4043969950  
 Conc: 336.24 ng/ml

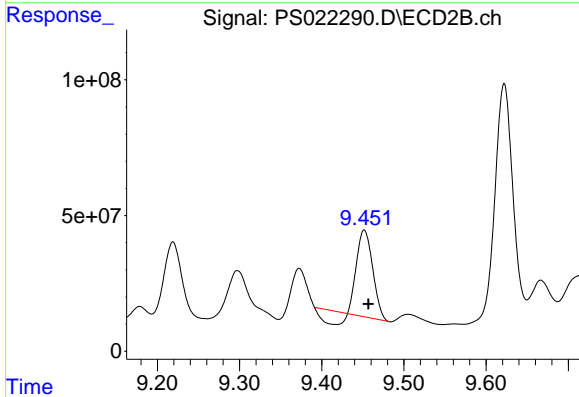




#13 2,4-DB

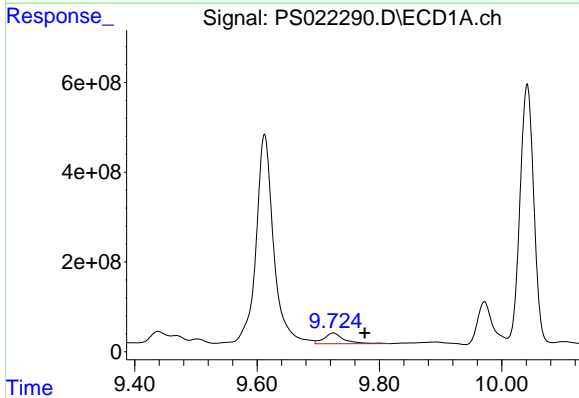
R.T.: 8.731 min  
 Delta R.T.: -0.004 min  
 Response: 1040317953  
 Conc: 383.75 ng/ml

Instrument :  
 ECD\_S  
 ClientSampleId :



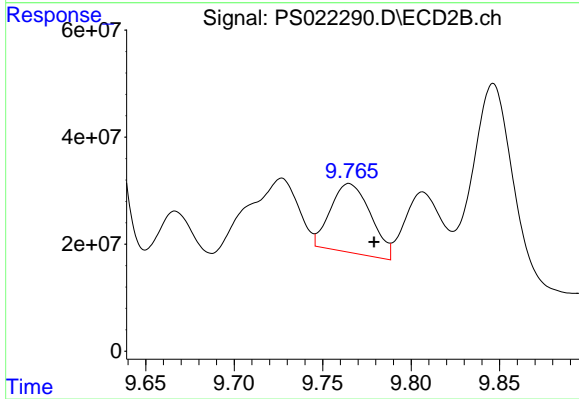
#13 2,4-DB

R.T.: 9.452 min  
 Delta R.T.: -0.005 min  
 Response: 379003300  
 Conc: 228.28 ng/ml



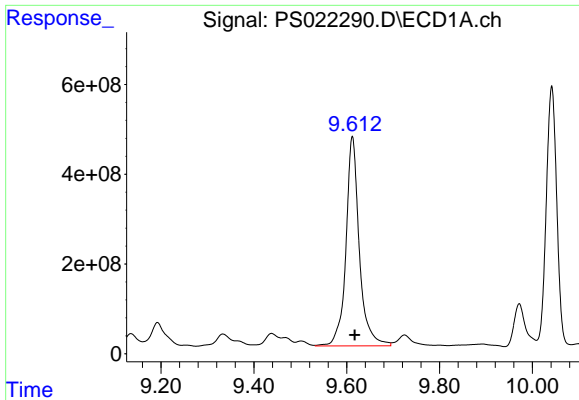
#14 DINOSEB

R.T.: 9.725 min  
 Delta R.T.: -0.052 min  
 Response: 530397096  
 Conc: 38.59 ng/ml



#14 DINOSEB

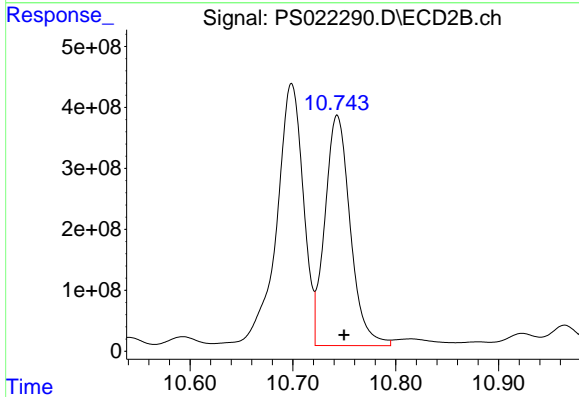
R.T.: 9.765 min  
 Delta R.T.: -0.014 min  
 Response: 204122843  
 Conc: 21.39 ng/ml



#15 Picloram

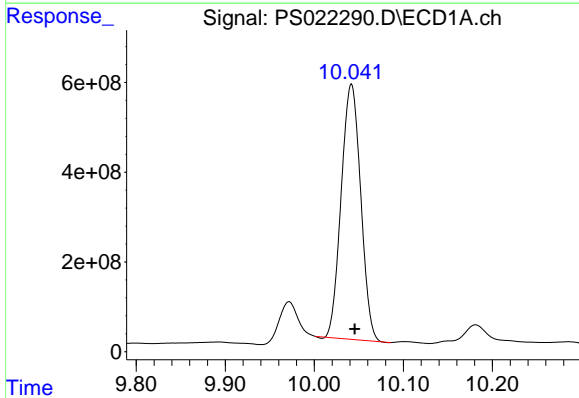
R.T.: 9.612 min  
 Delta R.T.: -0.005 min  
 Response: 9329463413  
 Conc: 378.72 ng/ml

Instrument :  
 ECD\_S  
 ClientSampleId :



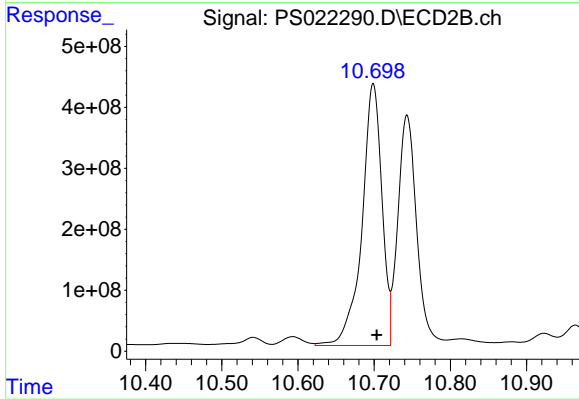
#15 Picloram

R.T.: 10.743 min  
 Delta R.T.: -0.007 min  
 Response: 6475174748  
 Conc: 330.27 ng/ml



#16 DCPA

R.T.: 10.042 min  
 Delta R.T.: -0.004 min  
 Response: 8641059496  
 Conc: 405.71 ng/ml



#16 DCPA

R.T.: 10.699 min  
 Delta R.T.: -0.005 min  
 Response: 7816822842  
 Conc: 499.64 ng/ml