

Data Path : Z:\pestpcbsrv\HPCHEM1\ECD_S\Data\PS030223\
 Data File : PS022293.D
 Signal(s) : Signal #1: ECD1A.ch Signal #2: ECD2B.ch
 Acq On : 02 Mar 2023 14:00
 Operator : AR\AJ
 Sample : PB151128BS
 Misc :
 ALS Vial : 8 Sample Multiplier: 1

Instrument :
 ECD_S
 ClientSampleId :

Integration File signal 1: autoint1.e
 Integration File signal 2: autoint2.e
 Quant Time: Mar 02 21:38:33 2023
 Quant Method : Z:\pestpcbsrv\HPCHEM1\ECD_S\Method\PS022023.M
 Quant Title : 8080.M
 QLast Update : Mon Feb 20 13:26:02 2023
 Response via : Initial Calibration
 Integrator: ChemStation

Volume Inj. : 2 µl
 Signal #1 Phase : Rtx-CLPesticides Signal #2 Phase: Rtx-CLPesticides2
 Signal #1 Info : 30M x 0.32mm x0.5 Signal #2 Info : 30M x 0.32mm x 0.25µm

Compound	RT#1	RT#2	Resp#1	Resp#2	ng/ml	ng/ml

System Monitoring Compounds						
4) S 2,4-DCAA	6.299	6.722	1380.0E6	1141.4E6	556.742	543.809
Target Compounds						
1) T Dalapon	2.409	2.482	1485.2E6	1545.7E6	468.467	480.007
2) T 3,5-DICHL...	5.680	5.922	1952.7E6	1672.5E6	525.286	540.846
3) T 4-Nitroph...	6.145	6.351	691.2E6	705.3E6	543.150	528.137
5) T DICAMBA	6.434	6.879	5528.8E6	5269.5E6	532.813	545.277
6) T MCPP	6.585	6.976	400.1E6	405.0E6	52.437	53.050
7) T MCPA	6.707	7.185	542.6E6	537.7E6	52.107	52.757
8) T DICHLORPROP	7.018	7.499	1402.8E6	1306.7E6	519.447	531.530
9) T 2,4-D	7.221	7.791	1752.6E6	1549.0E6	534.537	534.942
10) T Pentachlo...	7.439	8.207	20123.5E6	18357.9E6	558.942	566.571
11) T 2,4,5-TP ...	7.967	8.572	8282.2E6	7395.7E6	537.023	549.819
12) T 2,4,5-T	8.226	8.947	9079.5E6	6796.7E6	523.344	565.120
13) T 2,4-DB	8.732	9.451	1463.8E6	931.3E6	539.946	560.925
14) T DINOSEB	9.774	9.774	7077.2E6	5180.1E6	514.965	542.928
15) T Picloram	9.613	10.744	13409.6E6	10807.1E6	544.352	551.214
16) T DCPA	10.041	10.698	11554.5E6	8728.8E6	542.501	557.931

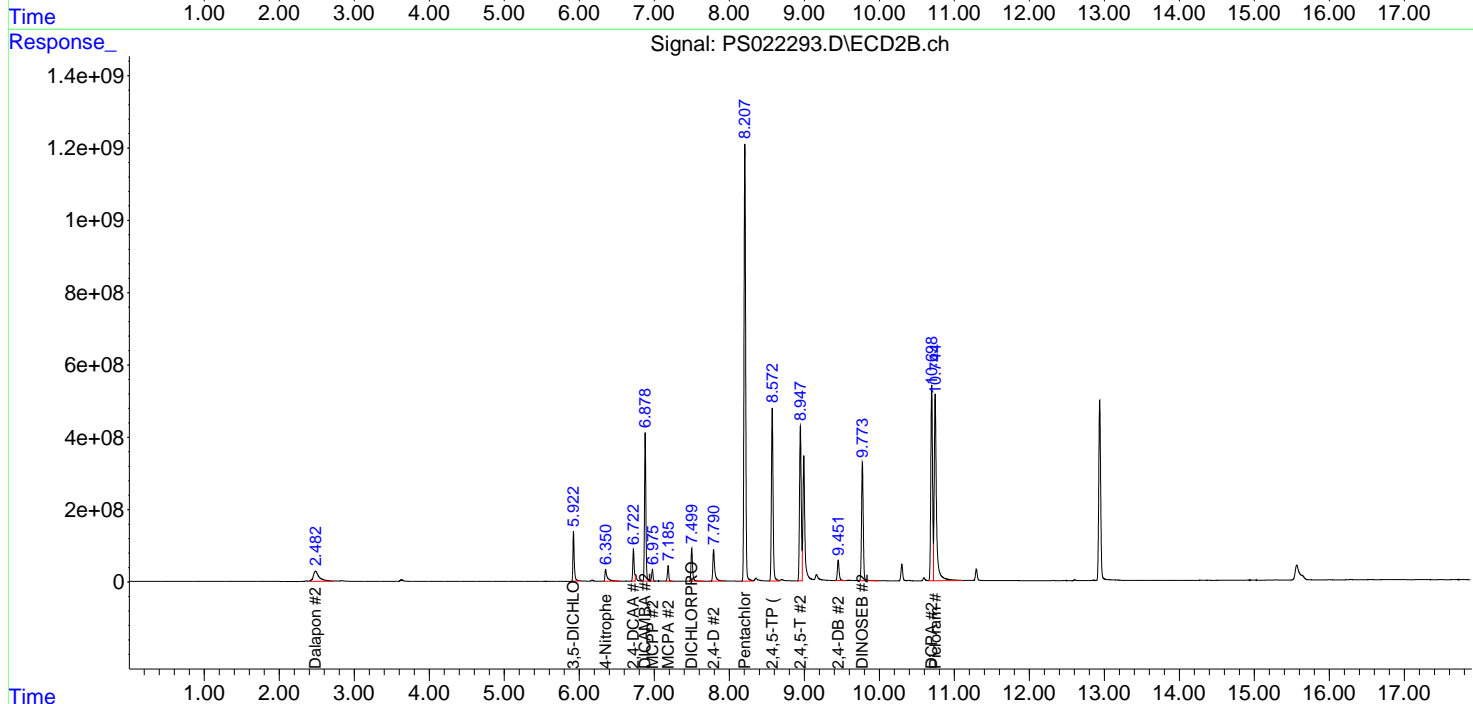
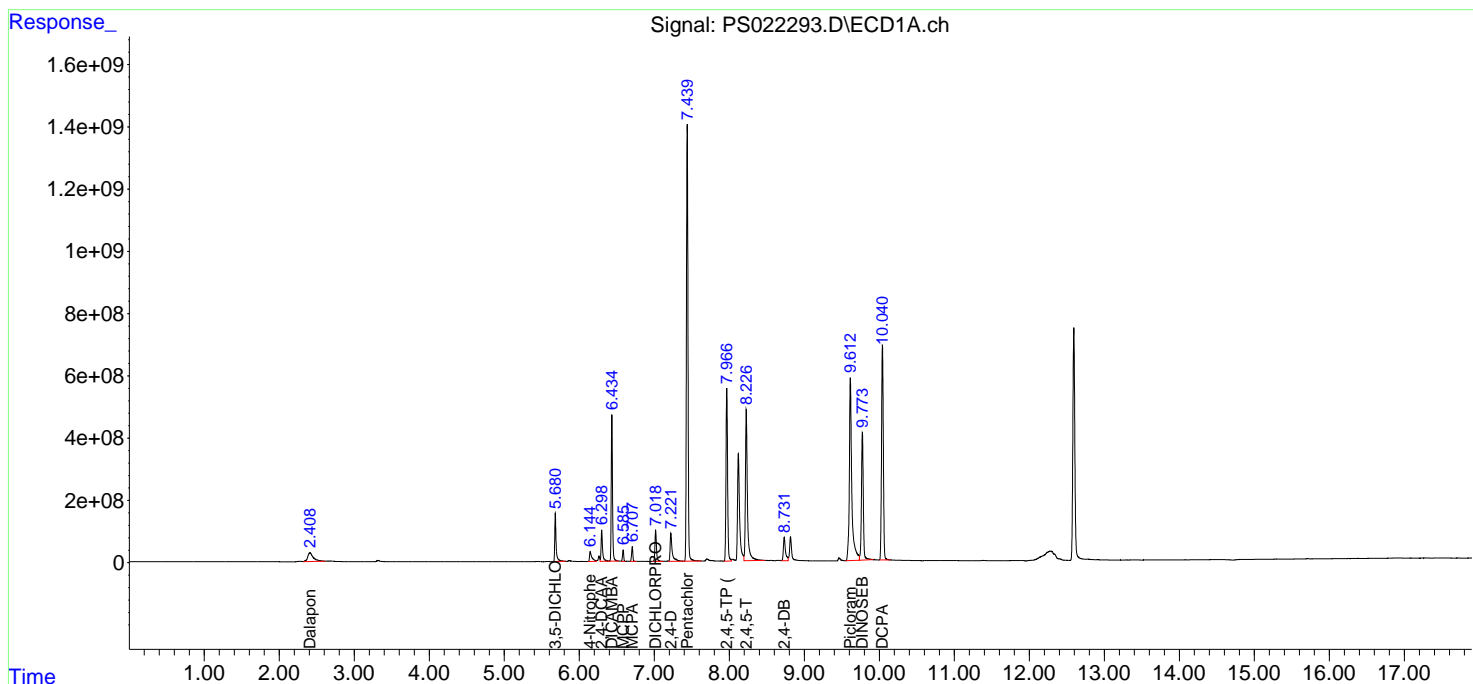
(f)=RT Delta > 1/2 Window (#)=Amounts differ by > 25% (m)=manual int.

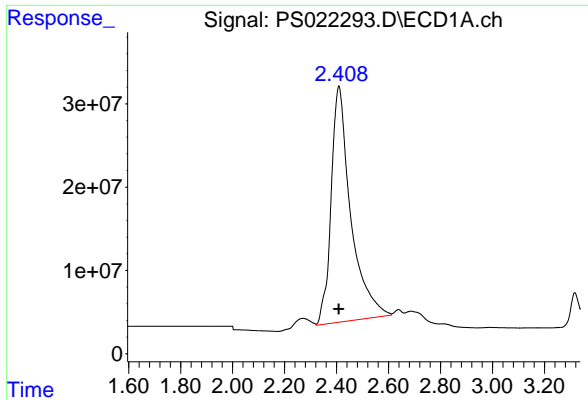
Data Path : Z:\pestpcbsrv\HPCHEM1\ECD_S\Data\PS030223\
 Data File : PS022293.D
 Signal(s) : Signal #1: ECD1A.ch Signal #2: ECD2B.ch
 Acq On : 02 Mar 2023 14:00
 Operator : AR\AJ
 Sample : PB151128BS
 Misc :
 ALS Vial : 8 Sample Multiplier: 1

Instrument :
 ECD_S
 ClientSampleId :

Integration File signal 1: autoint1.e
 Integration File signal 2: autoint2.e
 Quant Time: Mar 02 21:38:33 2023
 Quant Method : Z:\pestpcbsrv\HPCHEM1\ECD_S\Method\PS022023.M
 Quant Title : 8080.M
 QLast Update : Mon Feb 20 13:26:02 2023
 Response via : Initial Calibration
 Integrator: ChemStation

Volume Inj. : 2 µl
 Signal #1 Phase : Rtx-CLPesticides Signal #2 Phase: Rtx-CLPesticides2
 Signal #1 Info : 30M x 0.32mm x0.5 Signal #2 Info : 30M x 0.32mm x 0.25µm

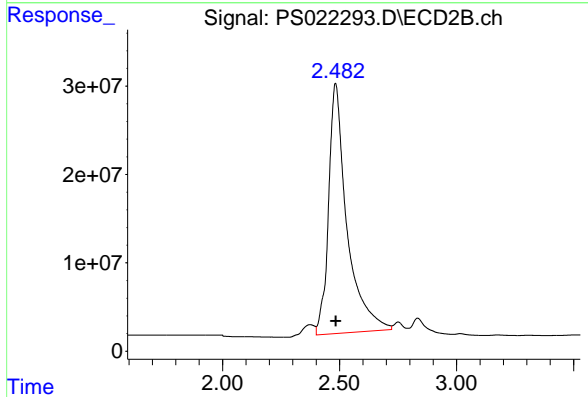




#1 Dalapon

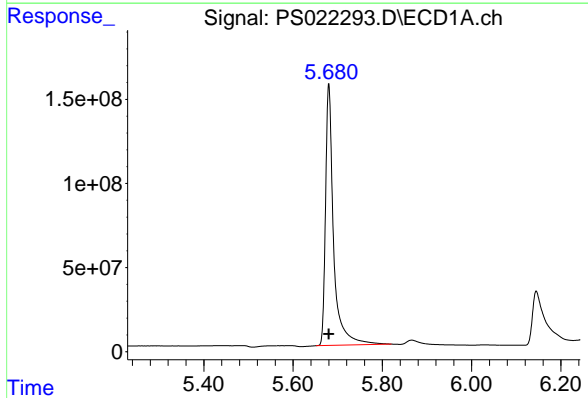
R.T.: 2.409 min
 Delta R.T.: 0.000 min
 Response: 1485172206
 Conc: 468.47 ng/ml

Instrument :
 ECD_S
 ClientSampleId :



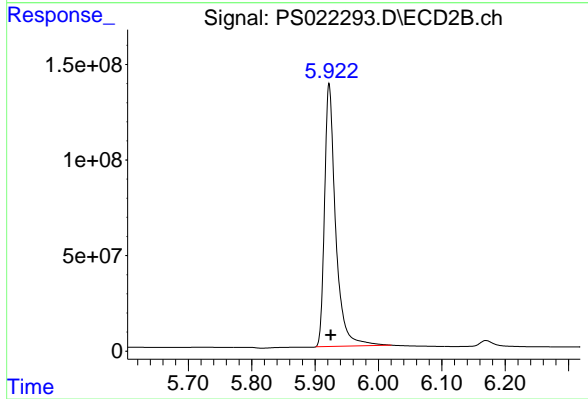
#1 Dalapon

R.T.: 2.482 min
 Delta R.T.: 0.000 min
 Response: 1545696560
 Conc: 480.01 ng/ml



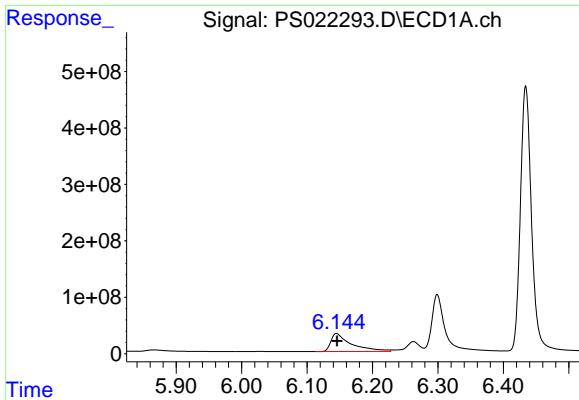
#2 3,5-DICHLOROBENZOIC ACID

R.T.: 5.680 min
 Delta R.T.: 0.000 min
 Response: 1952695214
 Conc: 525.29 ng/ml



#2 3,5-DICHLOROBENZOIC ACID

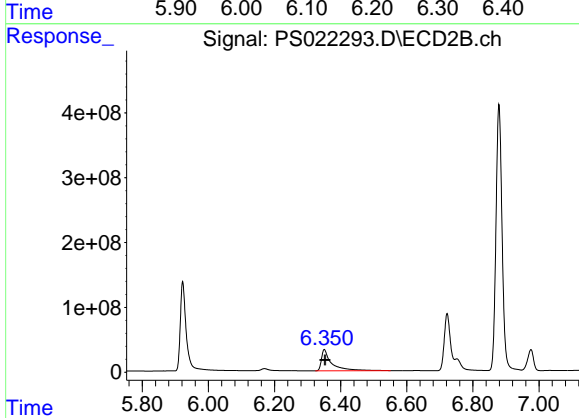
R.T.: 5.922 min
 Delta R.T.: -0.003 min
 Response: 1672471094
 Conc: 540.85 ng/ml



#3 4-Nitrophenol

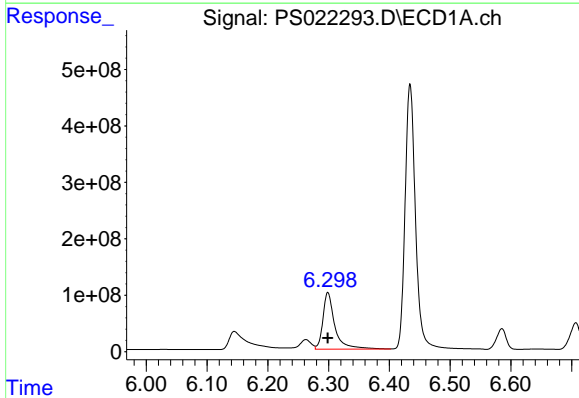
R.T.: 6.145 min
Delta R.T.: 0.000 min
Response: 691168632
Conc: 543.15 ng/ml

Instrument :
ECD_S
ClientSampleId :



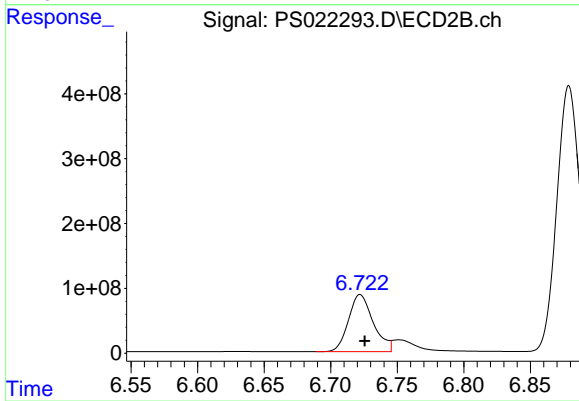
#3 4-Nitrophenol

R.T.: 6.351 min
Delta R.T.: -0.003 min
Response: 705347891
Conc: 528.14 ng/ml



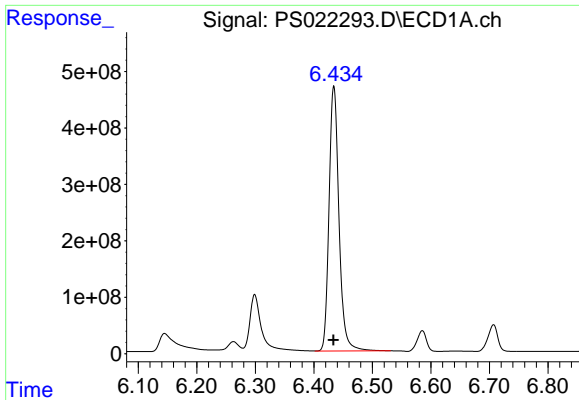
#4 2,4-DCAA

R.T.: 6.299 min
Delta R.T.: 0.000 min
Response: 1379990889
Conc: 556.74 ng/ml



#4 2,4-DCAA

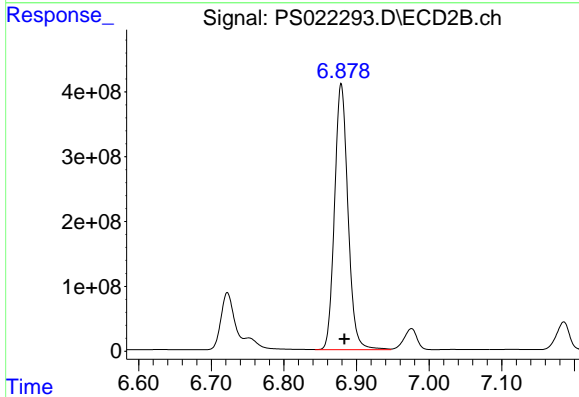
R.T.: 6.722 min
Delta R.T.: -0.004 min
Response: 1141434119
Conc: 543.81 ng/ml



#5 DICAMBA

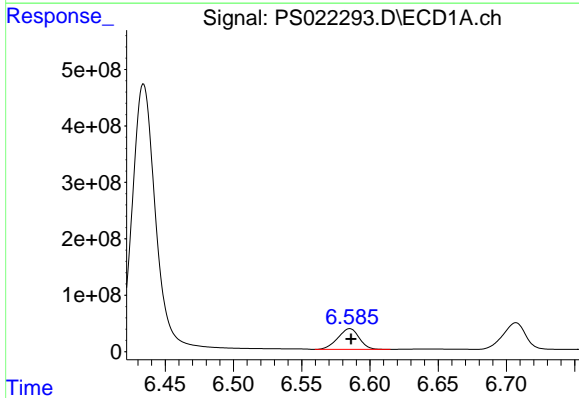
R.T.: 6.434 min
 Delta R.T.: 0.000 min
 Response: 5528783626
 Conc: 532.81 ng/ml

Instrument :
 ECD_S
 ClientSampleId :



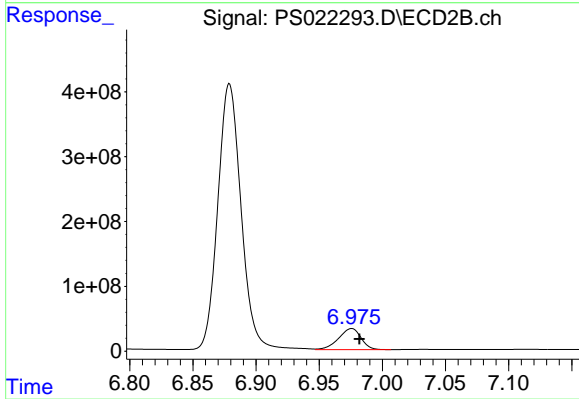
#5 DICAMBA

R.T.: 6.879 min
 Delta R.T.: -0.004 min
 Response: 5269541717
 Conc: 545.28 ng/ml



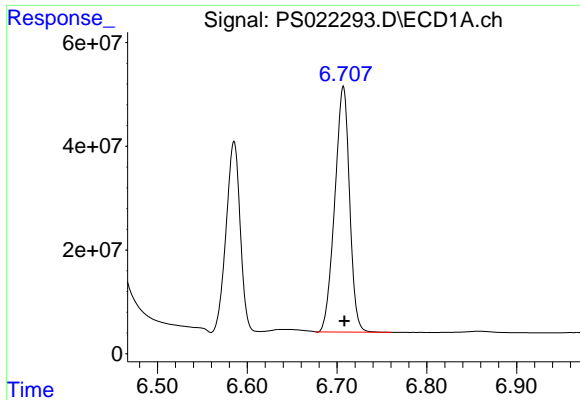
#6 MCP

R.T.: 6.585 min
 Delta R.T.: -0.001 min
 Response: 400111678
 Conc: 52.44 ug/ml



#6 MCP

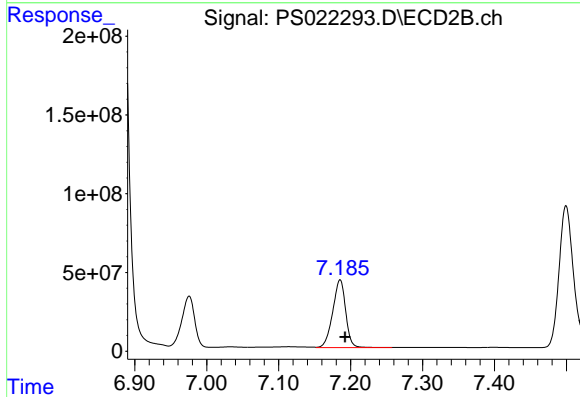
R.T.: 6.976 min
 Delta R.T.: -0.006 min
 Response: 405014591
 Conc: 53.05 ug/ml



#7 MCPA

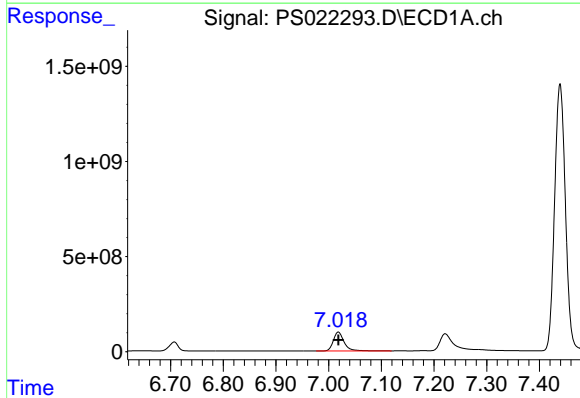
R.T.: 6.707 min
 Delta R.T.: -0.001 min
 Response: 542649930
 Conc: 52.11 ug/ml

Instrument :
 ECD_S
 ClientSampleId :



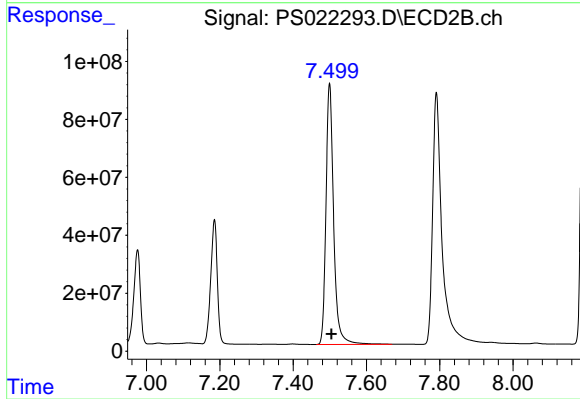
#7 MCPA

R.T.: 7.185 min
 Delta R.T.: -0.007 min
 Response: 537731401
 Conc: 52.76 ug/ml



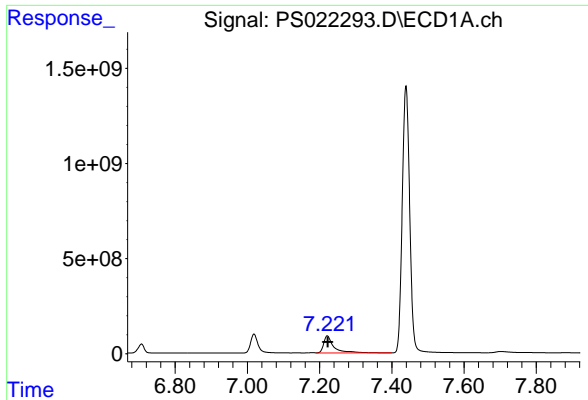
#8 DICHLORPROP

R.T.: 7.018 min
 Delta R.T.: 0.000 min
 Response: 1402827774
 Conc: 519.45 ng/ml



#8 DICHLORPROP

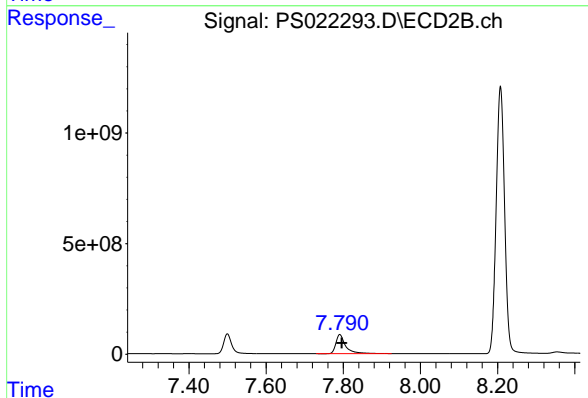
R.T.: 7.499 min
 Delta R.T.: -0.005 min
 Response: 1306728956
 Conc: 531.53 ng/ml



#9 2,4-D

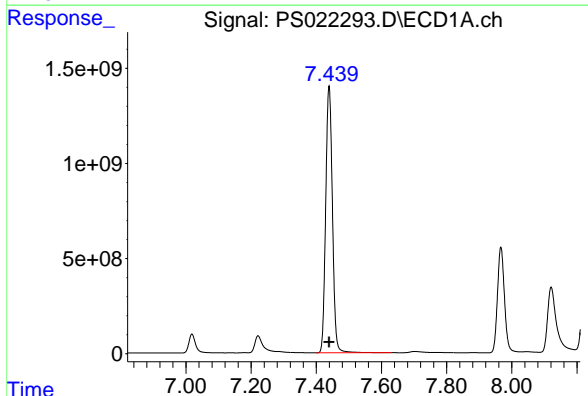
R.T.: 7.221 min
 Delta R.T.: -0.001 min
 Response: 1752602915
 Conc: 534.54 ng/ml

Instrument :
 ECD_S
 ClientSampleId :



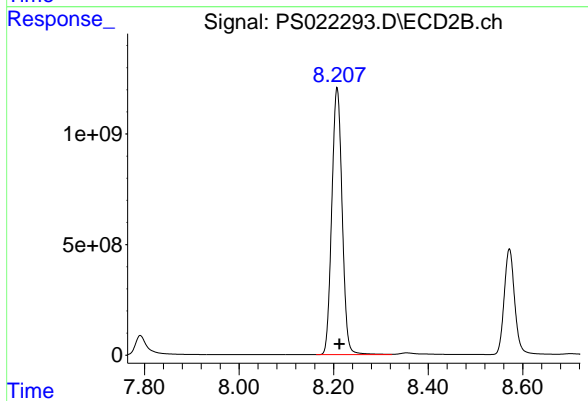
#9 2,4-D

R.T.: 7.791 min
 Delta R.T.: -0.005 min
 Response: 1549039298
 Conc: 534.94 ng/ml



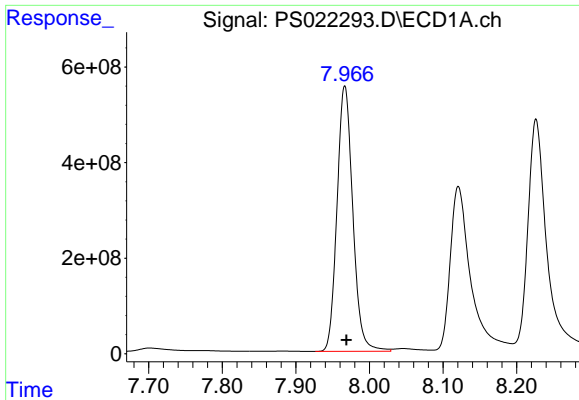
#10 Pentachlorophenol

R.T.: 7.439 min
 Delta R.T.: 0.000 min
 Response: 20123512267
 Conc: 558.94 ng/ml



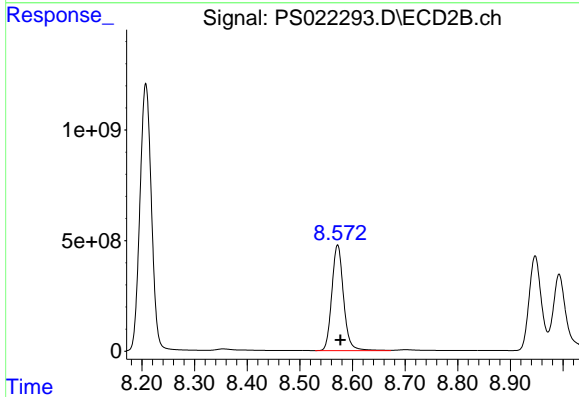
#10 Pentachlorophenol

R.T.: 8.207 min
 Delta R.T.: -0.005 min
 Response: 18357880450
 Conc: 566.57 ng/ml

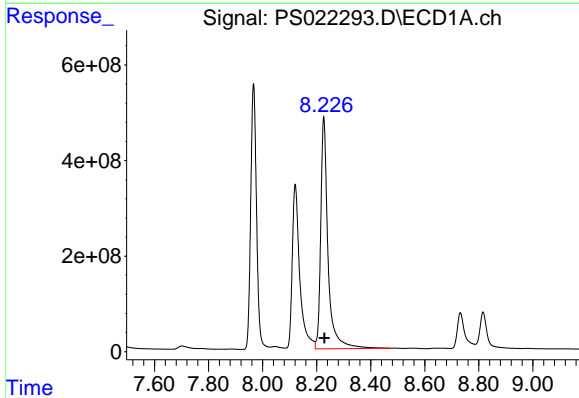


#11 2,4,5-TP (SILVEX)
 R.T.: 7.967 min
 Delta R.T.: -0.002 min
 Response: 8282211099
 Conc: 537.02 ng/ml

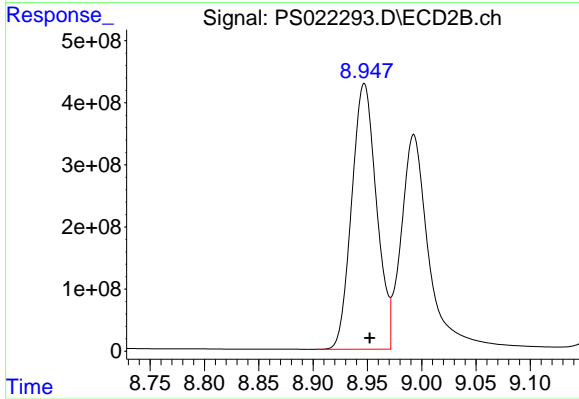
Instrument :
 ECD_S
 ClientSampleId :



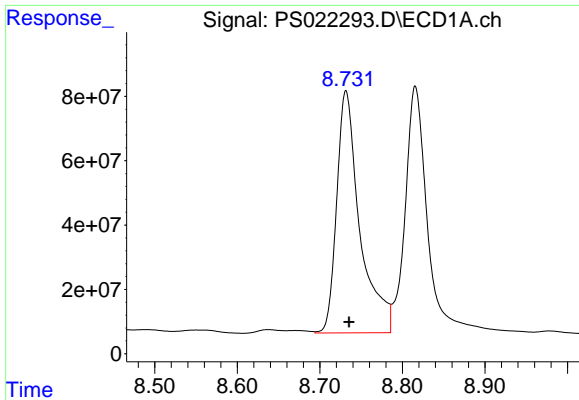
#11 2,4,5-TP (SILVEX)
 R.T.: 8.572 min
 Delta R.T.: -0.005 min
 Response: 7395669825
 Conc: 549.82 ng/ml



#12 2,4,5-T
 R.T.: 8.226 min
 Delta R.T.: -0.003 min
 Response: 9079545146
 Conc: 523.34 ng/ml



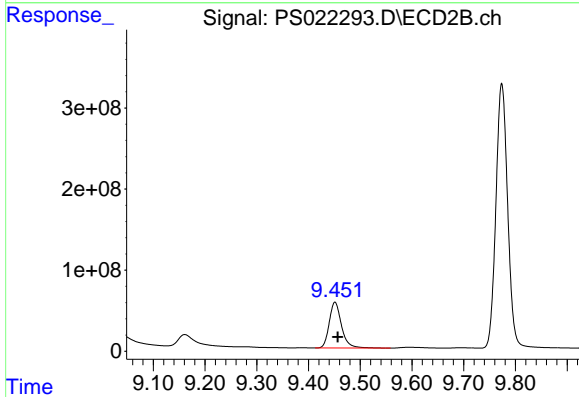
#12 2,4,5-T
 R.T.: 8.947 min
 Delta R.T.: -0.005 min
 Response: 6796733887
 Conc: 565.12 ng/ml



#13 2,4-DB

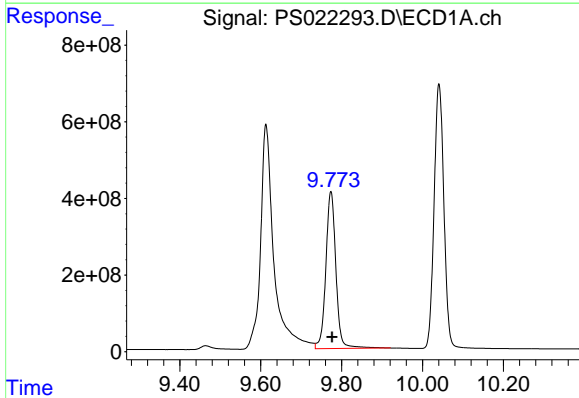
R.T.: 8.732 min
 Delta R.T.: -0.004 min
 Response: 1463753935
 Conc: 539.95 ng/ml

Instrument :
 ECD_S
 ClientSampleId :



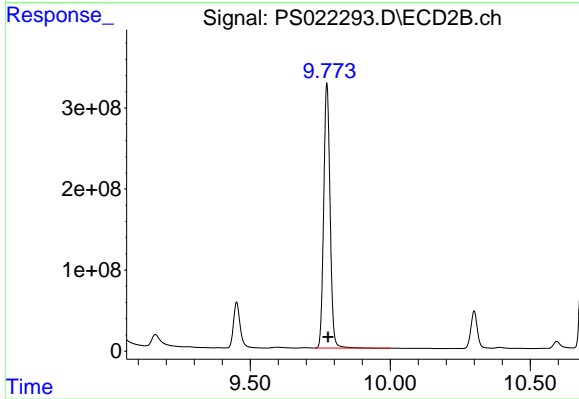
#13 2,4-DB

R.T.: 9.451 min
 Delta R.T.: -0.006 min
 Response: 931282966
 Conc: 560.92 ng/ml



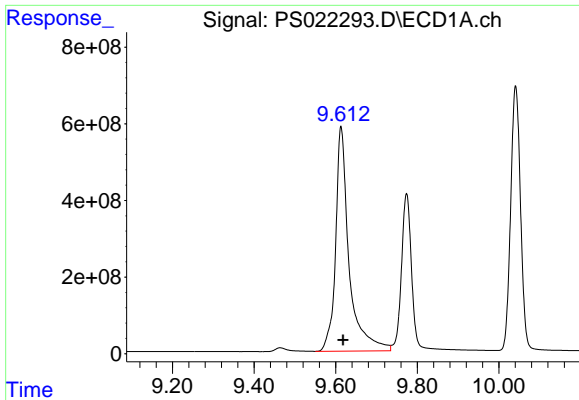
#14 DINOSEB

R.T.: 9.774 min
 Delta R.T.: -0.002 min
 Response: 7077151627
 Conc: 514.97 ng/ml



#14 DINOSEB

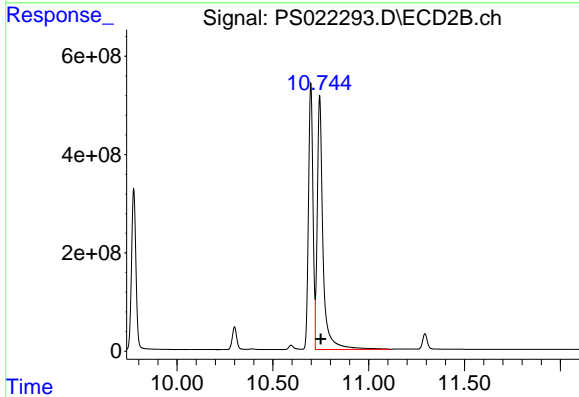
R.T.: 9.774 min
 Delta R.T.: -0.005 min
 Response: 5180061861
 Conc: 542.93 ng/ml



#15 Picloram

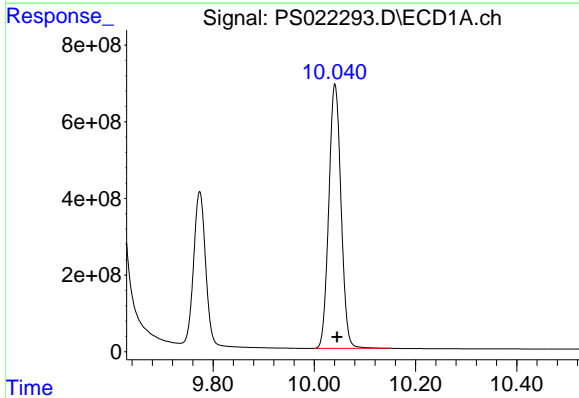
R.T.: 9.613 min
 Delta R.T.: -0.004 min
 Response: 13409566515
 Conc: 544.35 ng/ml

Instrument :
 ECD_S
 ClientSampleId :



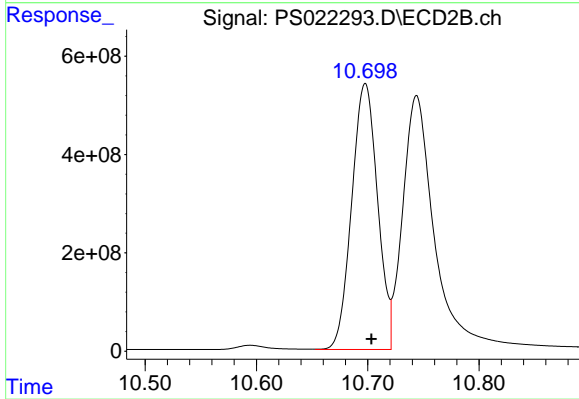
#15 Picloram

R.T.: 10.744 min
 Delta R.T.: -0.006 min
 Response: 10807095707
 Conc: 551.21 ng/ml



#16 DCPA

R.T.: 10.041 min
 Delta R.T.: -0.004 min
 Response: 11554466821
 Conc: 542.50 ng/ml



#16 DCPA

R.T.: 10.698 min
 Delta R.T.: -0.005 min
 Response: 8728750230
 Conc: 557.93 ng/ml