

Data Path : Z:\pestpcbsrv\HPCHEM1\ECD_S\Data\PS030420\
 Data File : PS009106.D
 Signal(s) : Signal #1: ECD1A.ch Signal #2: ECD2B.ch
 Acq On : 04 Mar 2020 17:39
 Operator : DD\AJ
 Sample : L1735-03
 Misc :
 ALS Vial : 23 Sample Multiplier: 1

Instrument :
 ECD_S
 ClientSampleId :
 FK-SF-01-009-B

Integration File signal 1: autoint1.e
 Integration File signal 2: autoint2.e
 Quant Time: Mar 05 01:13:52 2020
 Quant Method : Z:\pestpcbsrv\HPCHEM1\ECD_S\Method\PS022020.M
 Quant Title : 8080.M
 QLast Update : Thu Feb 20 11:30:26 2020
 Response via : Initial Calibration
 Integrator: ChemStation

Volume Inj. : 2 µl
 Signal #1 Phase : Rtx-CLPesticides Signal #2 Phase: Rtx-CLPesticides2
 Signal #1 Info : 30M x 0.32mm x0.5 Signal #2 Info : 30M x 0.32mm x 0.25µm

	Compound	RT#1	RT#2	Resp#1	Resp#2	ng/ml	ng/ml

System Monitoring Compounds							
4) S	2,4-DCAA	7.246	6.939	238.9E6	101.8E6	109.243	105.646
Target Compounds							
1) T	Dalapon	3.003	2.590	105.7E6	269.9E6	35.326	184.599 #
2) T	3,5-DICHL...	6.394	6.114	14505033	158.4E6	5.065	108.570 #
3) T	4-Nitroph...	7.085	0.000	4919931	0	4.599	N.D. #
5) T	DICAMBA	7.430	7.073	11273766	35679355	1.388	8.620 #
6) T	MCP P	7.606	0.000	19444956	0	3.233	N.D. #
7) T	MCPA	7.740	7.406	55138550	71782674	6.855	16.225 #
8) T	DICHLORPROP	8.083	7.759	19607750	22077474	10.094	22.035 #
9) T	2,4-D	8.432	0.000	29742780	0	14.352	N.D. #
10) T	Pentachlo...	8.674	8.463	71529374	58688577	2.465	4.131 #
11) T	2,4,5-TP ...	9.219	8.793	58229874	155.8E6	5.296	28.760 #
12) T	2,4,5-T	9.535	9.197	64671244	29616910	6.049	5.471
13) T	2,4-DB	10.106	9.654	118.5E6	11719934	82.116	16.685 #
14) T	DINOSEB	11.195	10.062	66924165	53143879	7.910	13.440 #
15) T	Picloram	11.039	11.057	10011772	22219776	<MDL	3.058 #
16) T	DCPA	11.499	10.980	-22011447	22170965	N.D.	3.204

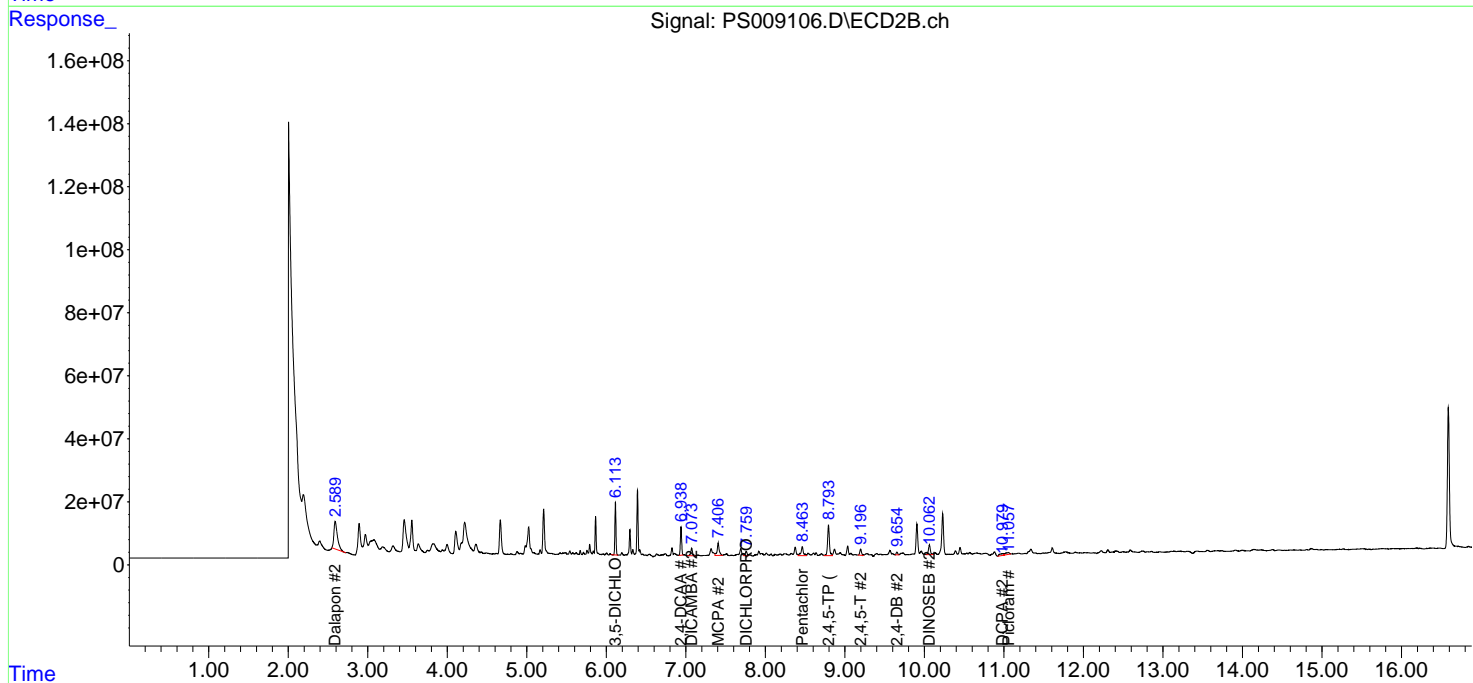
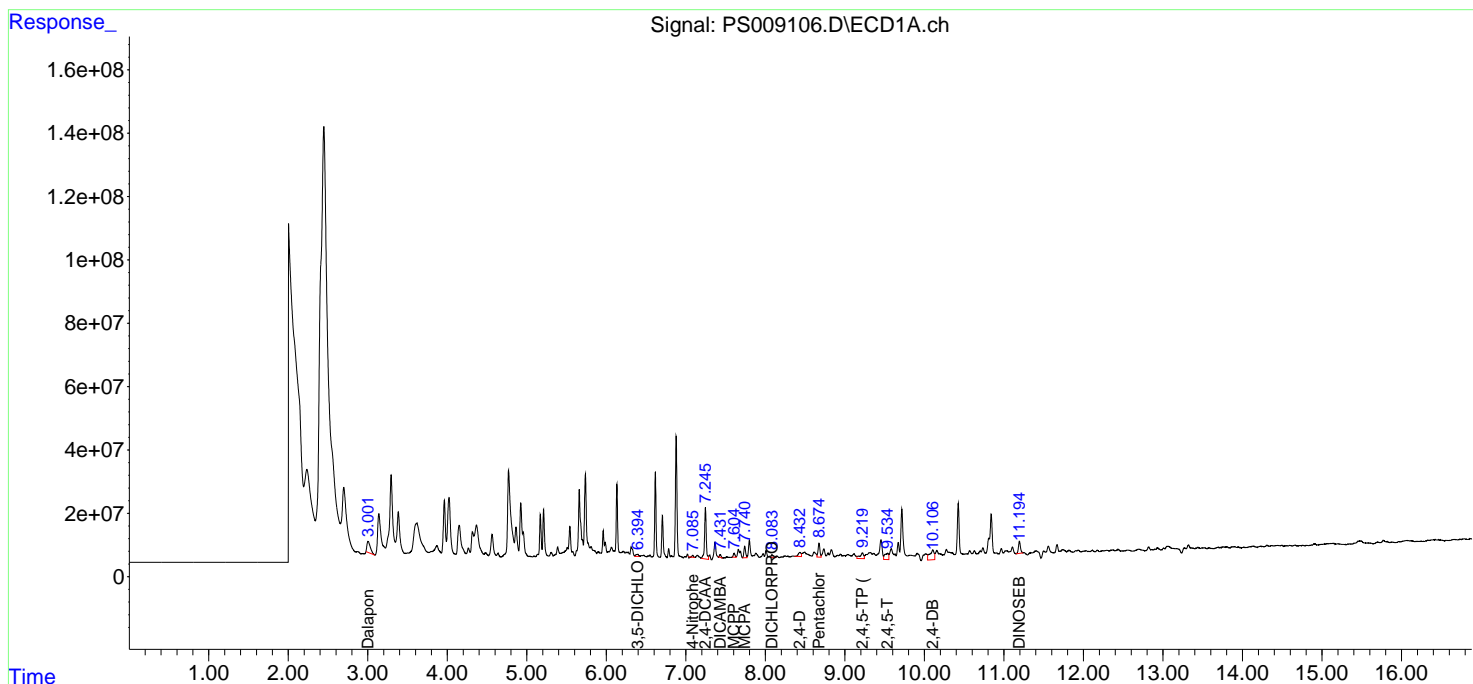
(f)=RT Delta > 1/2 Window (#)=Amounts differ by > 25% (m)=manual int.

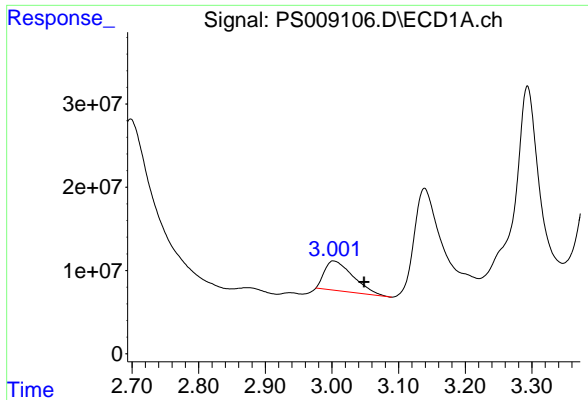
Data Path : Z:\pestpcbsrv\HPCHEM1\ECD_S\Data\PS030420\
 Data File : PS009106.D
 Signal(s) : Signal #1: ECD1A.ch Signal #2: ECD2B.ch
 Acq On : 04 Mar 2020 17:39
 Operator : DD\AJ
 Sample : L1735-03
 Misc :
 ALS Vial : 23 Sample Multiplier: 1

Instrument :
 ECD_S
Client Sampled :
 FK-SF-01-009-B

Integration File signal 1: autoint1.e
 Integration File signal 2: autoint2.e
 Quant Time: Mar 05 01:13:52 2020
 Quant Method : Z:\pestpcbsrv\HPCHEM1\ECD_S\Method\PS022020.M
 Quant Title : 8080.M
 QLast Update : Thu Feb 20 11:30:26 2020
 Response via : Initial Calibration
 Integrator: ChemStation

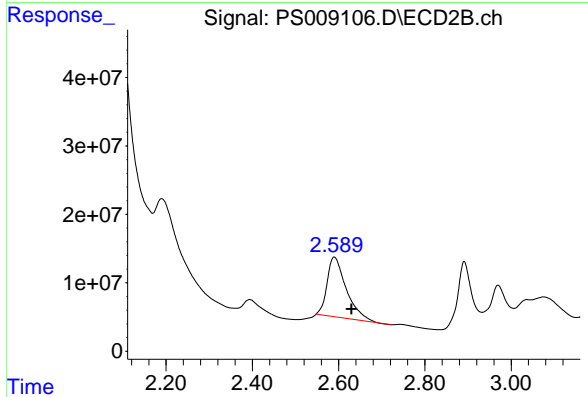
Volume Inj. : 2 µl
 Signal #1 Phase : Rtx-CLPesticides Signal #2 Phase: Rtx-CLPesticides2
 Signal #1 Info : 30M x 0.32mm x0.5 Signal #2 Info : 30M x 0.32mm x 0.25µm



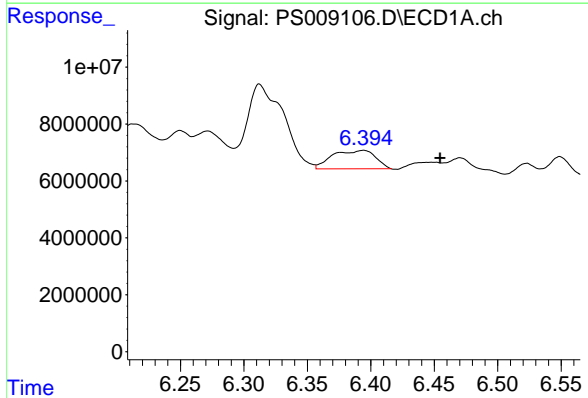


#1 Dalapon
 R.T.: 3.003 min
 Delta R.T.: -0.045 min
 Response: 105686542
 Conc: 35.33 ng/ml

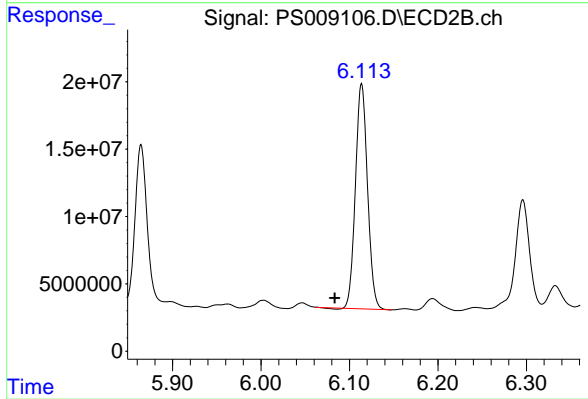
Instrument :
 ECD_S
 ClientSampleId :
 FK-SF-01-009-B



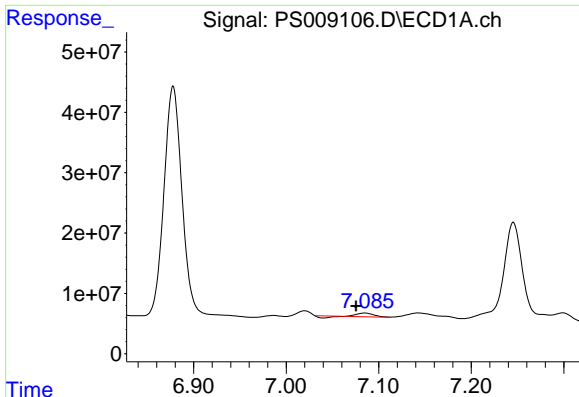
#1 Dalapon
 R.T.: 2.590 min
 Delta R.T.: -0.040 min
 Response: 269923850
 Conc: 184.60 ng/ml



#2 3,5-DICHLOROBENZOIC ACID
 R.T.: 6.394 min
 Delta R.T.: -0.061 min
 Response: 14505033
 Conc: 5.07 ng/ml



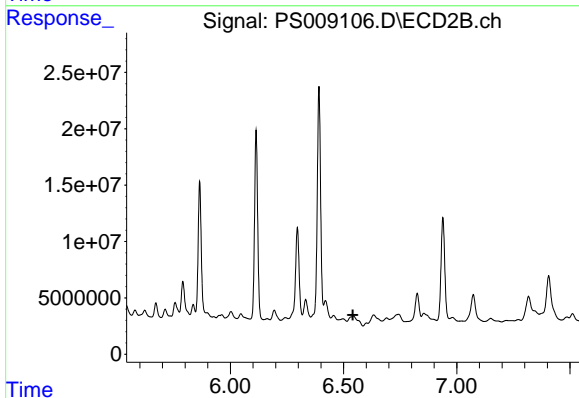
#2 3,5-DICHLOROBENZOIC ACID
 R.T.: 6.114 min
 Delta R.T.: 0.030 min
 Response: 158432342
 Conc: 108.57 ng/ml



#3 4-Nitrophenol

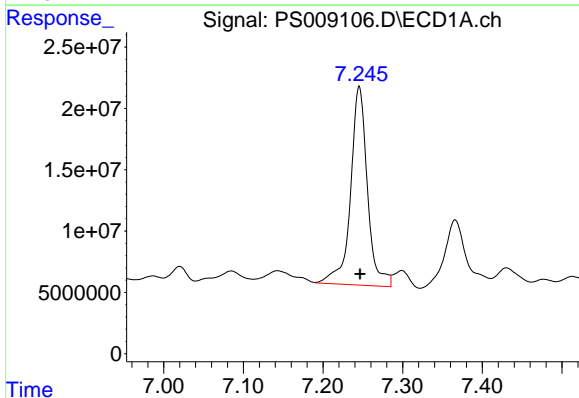
R.T.: 7.085 min
 Delta R.T.: 0.009 min
 Response: 4919931
 Conc: 4.60 ng/ml

Instrument :
 ECD_S
 ClientSampleId :
 FK-SF-01-009-B



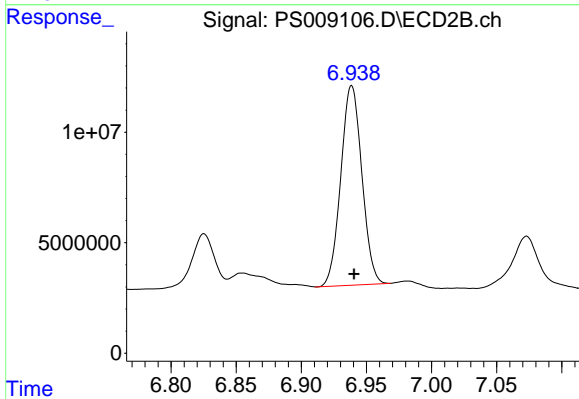
#3 4-Nitrophenol

R.T.: 0.000 min
 Exp R.T. : 6.541 min
 Response: 0
 Conc: N.D.



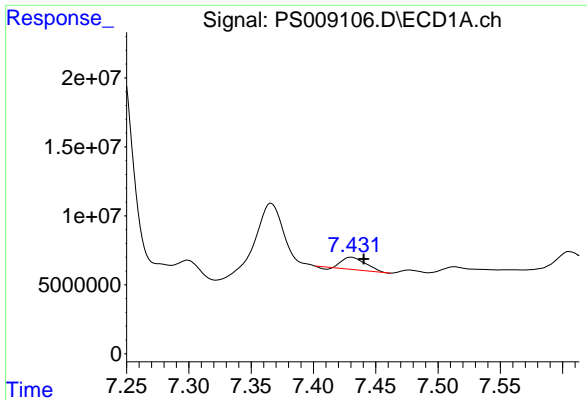
#4 2,4-DCAA

R.T.: 7.246 min
 Delta R.T.: -0.001 min
 Response: 238870598
 Conc: 109.24 ng/ml



#4 2,4-DCAA

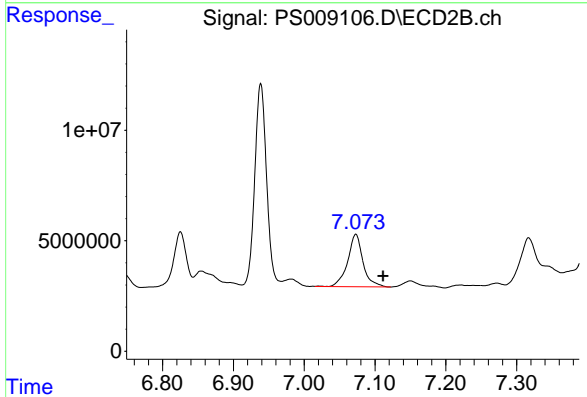
R.T.: 6.939 min
 Delta R.T.: -0.002 min
 Response: 101796198
 Conc: 105.65 ng/ml



#5 DICAMBA

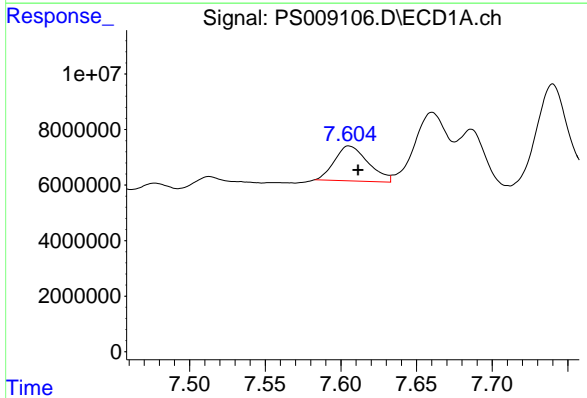
R.T.: 7.430 min
 Delta R.T.: -0.010 min
 Response: 11273766
 Conc: 1.39 ng/ml

Instrument :
 ECD_S
 ClientSampled :
 FK-SF-01-009-B



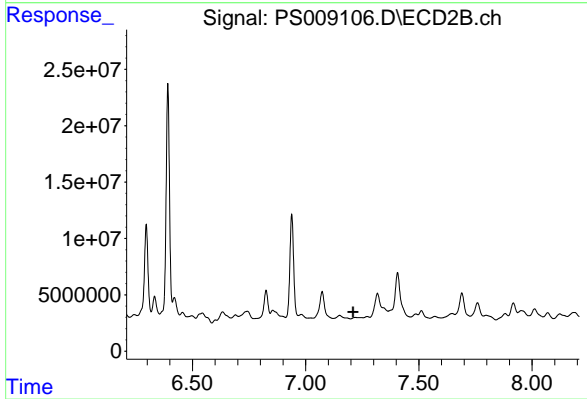
#5 DICAMBA

R.T.: 7.073 min
 Delta R.T.: -0.038 min
 Response: 35679355
 Conc: 8.62 ng/ml



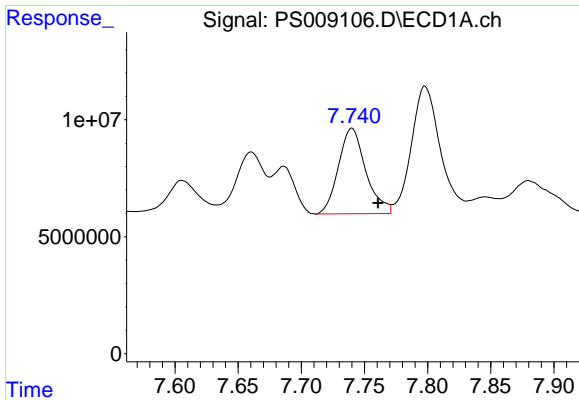
#6 MCP

R.T.: 7.606 min
 Delta R.T.: -0.006 min
 Response: 19444956
 Conc: 3.23 ug/ml



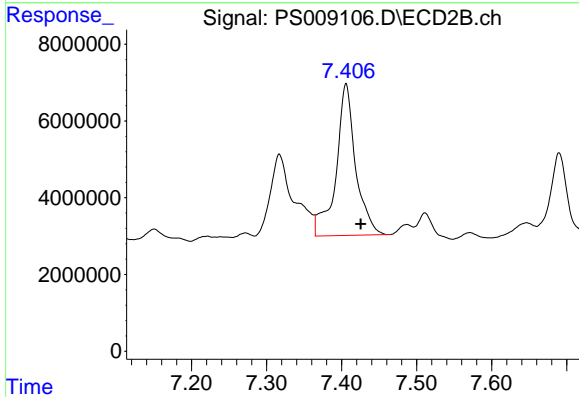
#6 MCP

R.T.: 0.000 min
 Exp R.T. : 7.209 min
 Response: 0
 Conc: N.D.

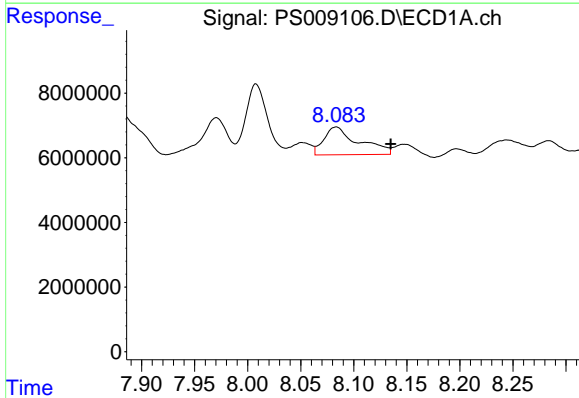


#7 MCPA
 R.T.: 7.740 min
 Delta R.T.: -0.021 min
 Response: 55138550
 Conc: 6.85 ug/ml

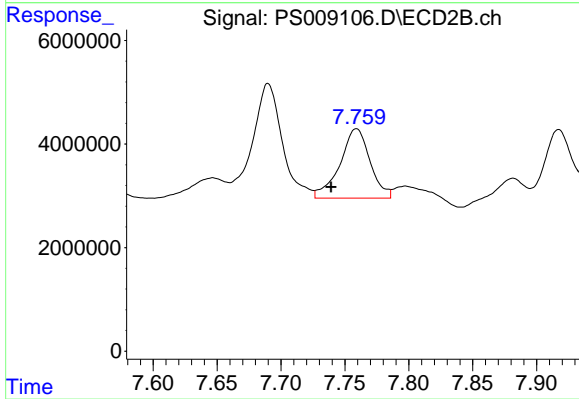
Instrument :
 ECD_S
 ClientSampled :
 FK-SF-01-009-B



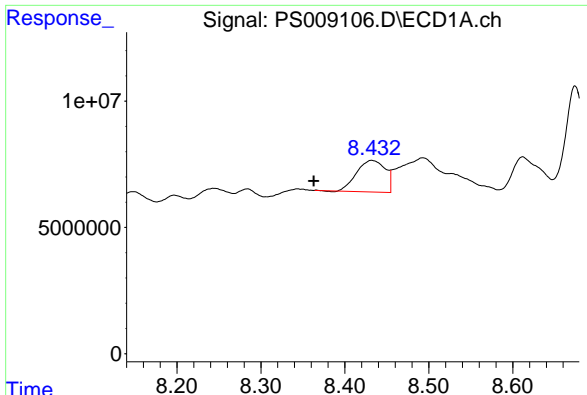
#7 MCPA
 R.T.: 7.406 min
 Delta R.T.: -0.020 min
 Response: 71782674
 Conc: 16.22 ug/ml



#8 DICHLORPROP
 R.T.: 8.083 min
 Delta R.T.: -0.052 min
 Response: 19607750
 Conc: 10.09 ng/ml

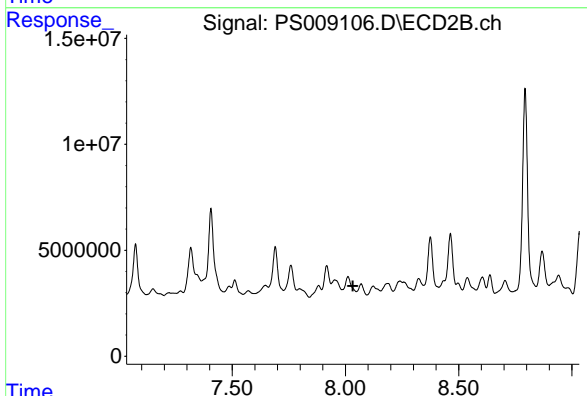


#8 DICHLORPROP
 R.T.: 7.759 min
 Delta R.T.: 0.020 min
 Response: 22077474
 Conc: 22.03 ng/ml

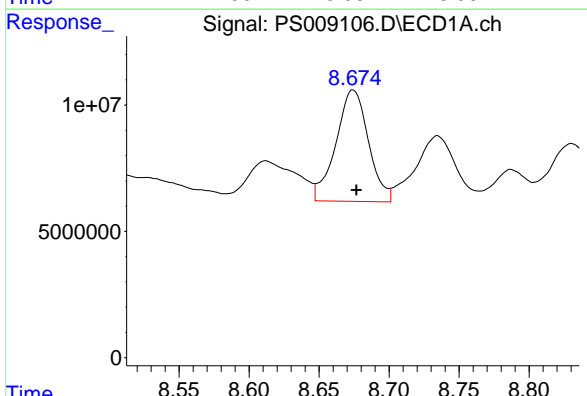


#9 2,4-D
 R.T.: 8.432 min
 Delta R.T.: 0.069 min
 Response: 29742780
 Conc: 14.35 ng/ml

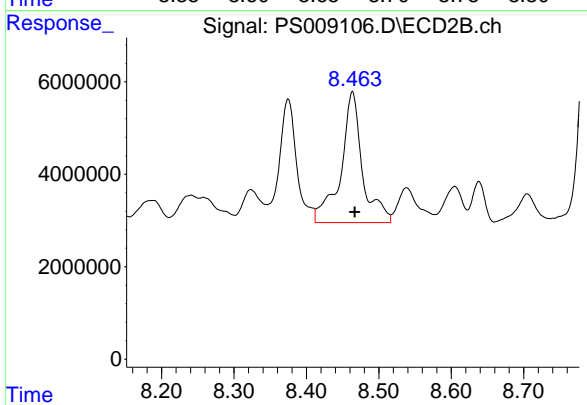
Instrument :
 ECD_S
 ClientSampleId :
 FK-SF-01-009-B



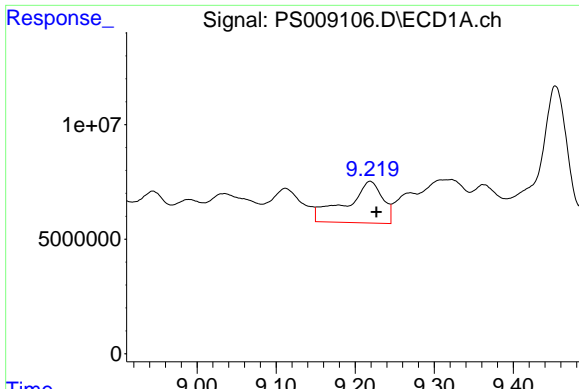
#9 2,4-D
 R.T.: 0.000 min
 Exp R.T. : 8.033 min
 Response: 0
 Conc: N.D.



#10 Pentachlorophenol
 R.T.: 8.674 min
 Delta R.T.: -0.002 min
 Response: 71529374
 Conc: 2.46 ng/ml

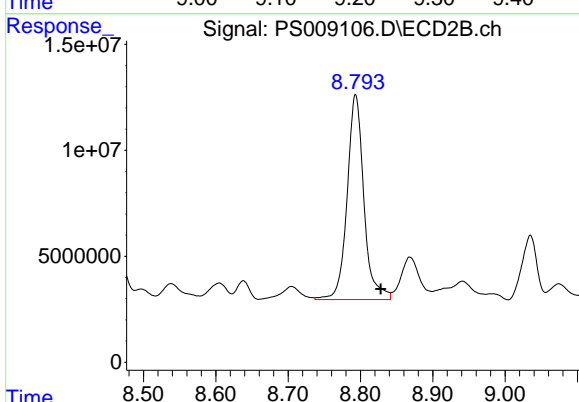


#10 Pentachlorophenol
 R.T.: 8.463 min
 Delta R.T.: -0.003 min
 Response: 58688577
 Conc: 4.13 ng/ml

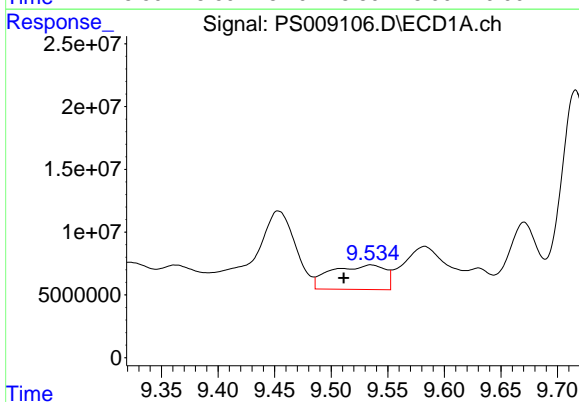


#11 2,4,5-TP (SILVEX)
 R.T.: 9.219 min
 Delta R.T.: -0.008 min
 Response: 58229874
 Conc: 5.30 ng/ml

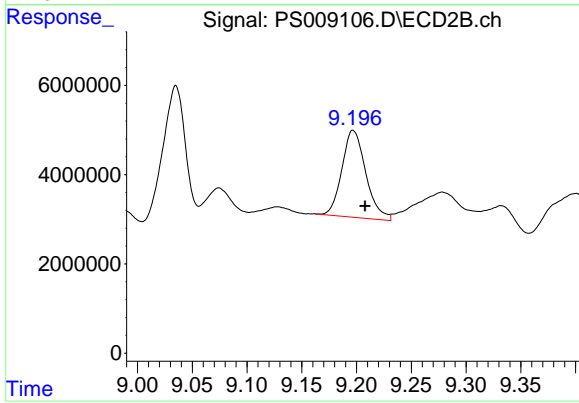
Instrument :
 ECD_S
ClientSampled :
 FK-SF-01-009-B



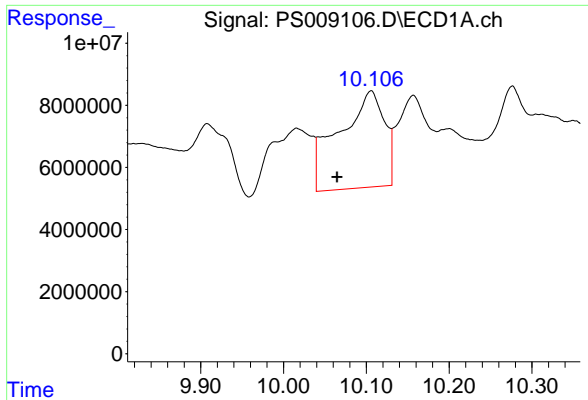
#11 2,4,5-TP (SILVEX)
 R.T.: 8.793 min
 Delta R.T.: -0.035 min
 Response: 155788957
 Conc: 28.76 ng/ml



#12 2,4,5-T
 R.T.: 9.535 min
 Delta R.T.: 0.024 min
 Response: 64671244
 Conc: 6.05 ng/ml

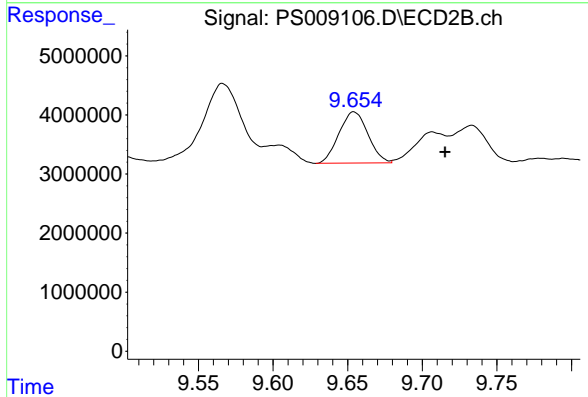


#12 2,4,5-T
 R.T.: 9.197 min
 Delta R.T.: -0.011 min
 Response: 29616910
 Conc: 5.47 ng/ml

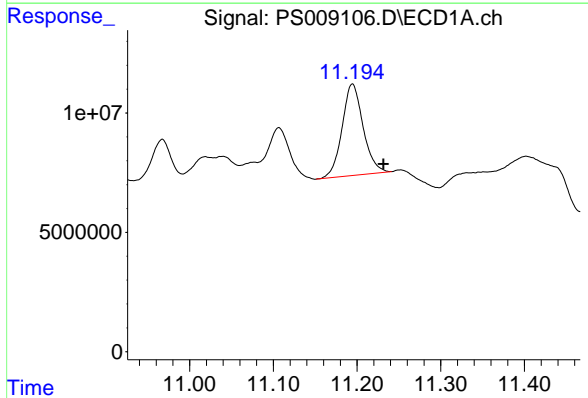


#13 2,4-DB
 R.T.: 10.106 min
 Delta R.T.: 0.041 min
 Response: 118495927
 Conc: 82.12 ng/ml

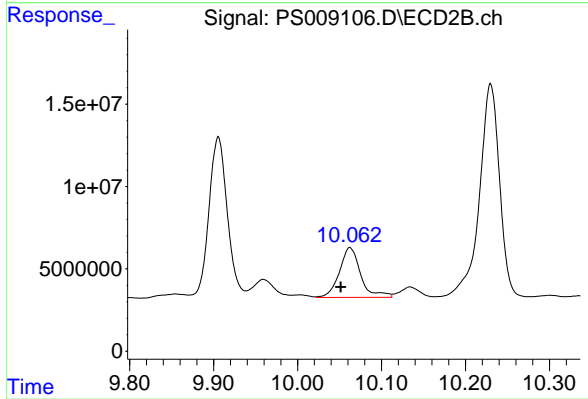
Instrument :
 ECD_S
 ClientSampleId :
 FK-SF-01-009-B



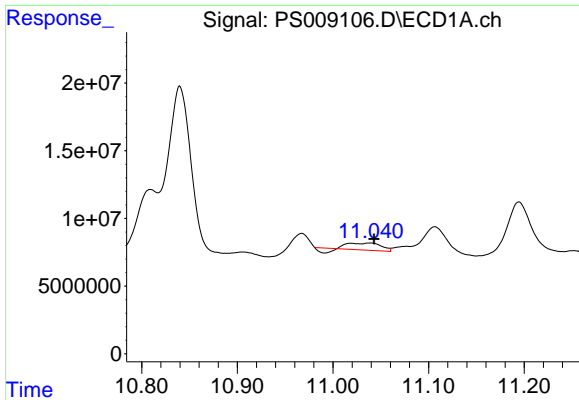
#13 2,4-DB
 R.T.: 9.654 min
 Delta R.T.: -0.061 min
 Response: 11719934
 Conc: 16.68 ng/ml



#14 DINOSEB
 R.T.: 11.195 min
 Delta R.T.: -0.037 min
 Response: 66924165
 Conc: 7.91 ng/ml

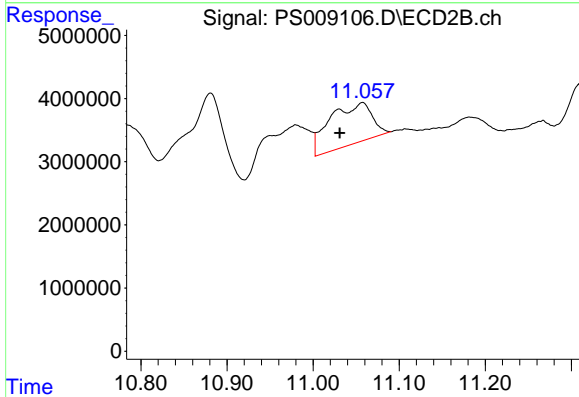


#14 DINOSEB
 R.T.: 10.062 min
 Delta R.T.: 0.011 min
 Response: 53143879
 Conc: 13.44 ng/ml

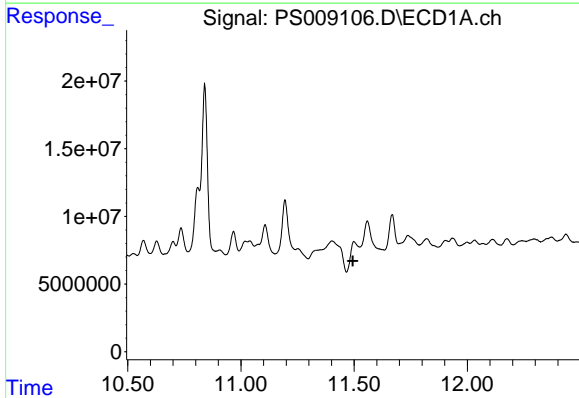


#15 Picloram
 R.T.: 11.039 min
 Delta R.T.: -0.004 min
 Response: 10011772
 Conc: N.D.

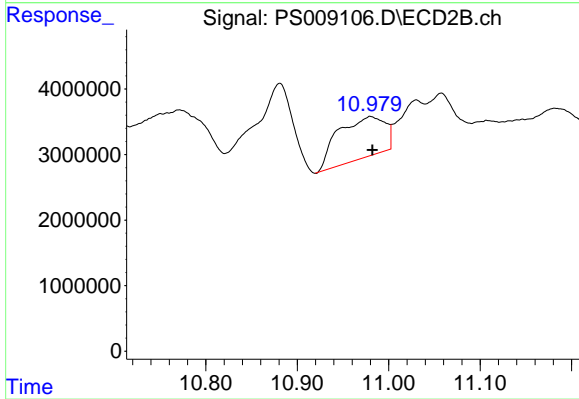
Instrument :
 ECD_S
 ClientSampleId :
 FK-SF-01-009-B



#15 Picloram
 R.T.: 11.057 min
 Delta R.T.: 0.026 min
 Response: 22219776
 Conc: 3.06 ng/ml



#16 DCPA
 R.T.: 11.499 min
 Delta R.T.: 0.004 min
 Response: -22011447
 Conc: N.D.



#16 DCPA
 R.T.: 10.980 min
 Delta R.T.: -0.002 min
 Response: 22170965
 Conc: 3.20 ng/ml