

Data Path : Z:\pestpcbsrv\HPCHEM1\ECD\_S\Data\PS030420\  
 Data File : PS009126.D  
 Signal(s) : Signal #1: ECD1A.ch Signal #2: ECD2B.ch  
 Acq On : 05 Mar 2020 02:49  
 Operator : DD\AJ  
 Sample : I.BLK  
 Misc :  
 ALS Vial : 2 Sample Multiplier: 1

Instrument :  
 ECD\_S  
 ClientSampleId :  
 I.BLK

Integration File signal 1: autoint1.e  
 Integration File signal 2: autoint2.e  
 Quant Time: Mar 05 04:07:34 2020  
 Quant Method : Z:\pestpcbsrv\HPCHEM1\ECD\_S\Method\PS022020.M  
 Quant Title : 8080.M  
 QLast Update : Thu Feb 20 11:30:26 2020  
 Response via : Initial Calibration  
 Integrator: ChemStation

Volume Inj. : 2 µl  
 Signal #1 Phase : Rtx-CLPesticides Signal #2 Phase: Rtx-CLPesticides2  
 Signal #1 Info : 30M x 0.32mm x0.5 Signal #2 Info : 30M x 0.32mm x 0.25µm

Compound	RT#1	RT#2	Resp#1	Resp#2	ng/ml	ng/ml
System Monitoring Compounds						
4) S 2,4-DCAA	7.245	6.938	919.5E6	499.5E6	420.513	518.368
Target Compounds						
11) T 2,4,5-TP ...	9.223	0.000	7108802	0	<MDL	N.D. #
12) T 2,4,5-T	9.508	9.258	16558027	15016242	1.549	2.774 #
15) T Picloram	11.042	11.029	31843705	15030148	2.326	2.068
16) T DCPA	11.492	11.029	9641501	15030148	<MDL	2.172 #

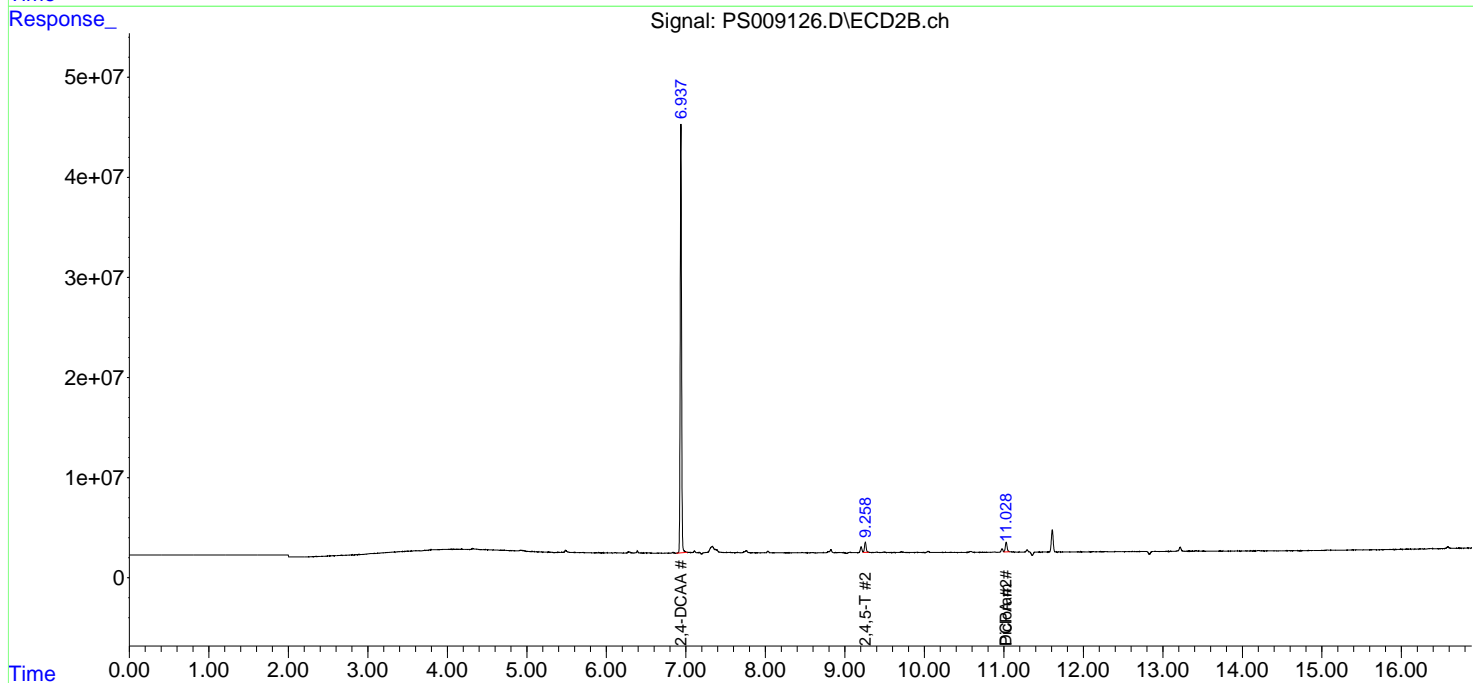
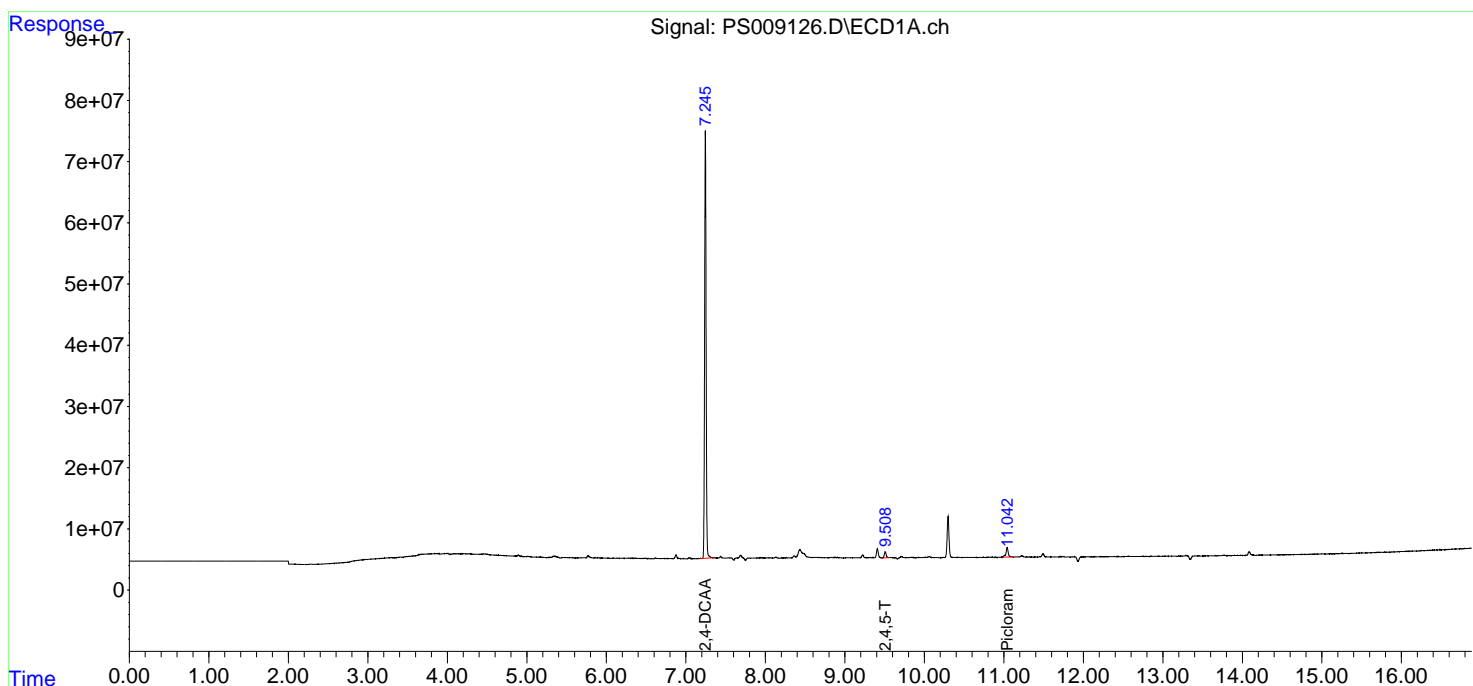
(f)=RT Delta > 1/2 Window (#)=Amounts differ by > 25% (m)=manual int.

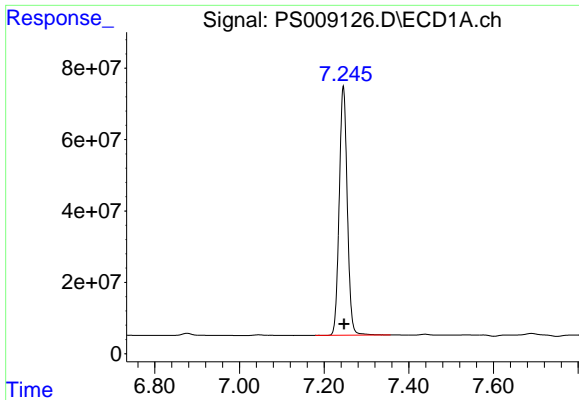
Data Path : Z:\pestpcbsrv\HPCHEM1\ECD\_S\Data\PS030420\  
 Data File : PS009126.D  
 Signal(s) : Signal #1: ECD1A.ch Signal #2: ECD2B.ch  
 Acq On : 05 Mar 2020 02:49  
 Operator : DD\AJ  
 Sample : I.BLK  
 Misc :  
 ALS Vial : 2 Sample Multiplier: 1

Instrument :  
 ECD\_S  
 ClientSampled :  
 I.BLK

Integration File signal 1: autoint1.e  
 Integration File signal 2: autoint2.e  
 Quant Time: Mar 05 04:07:34 2020  
 Quant Method : Z:\pestpcbsrv\HPCHEM1\ECD\_S\Method\PS022020.M  
 Quant Title : 8080.M  
 QLast Update : Thu Feb 20 11:30:26 2020  
 Response via : Initial Calibration  
 Integrator: ChemStation

Volume Inj. : 2 µl  
 Signal #1 Phase : Rtx-CLPesticides Signal #2 Phase: Rtx-CLPesticides2  
 Signal #1 Info : 30M x 0.32mm x0.5 Signal #2 Info : 30M x 0.32mm x 0.25µm

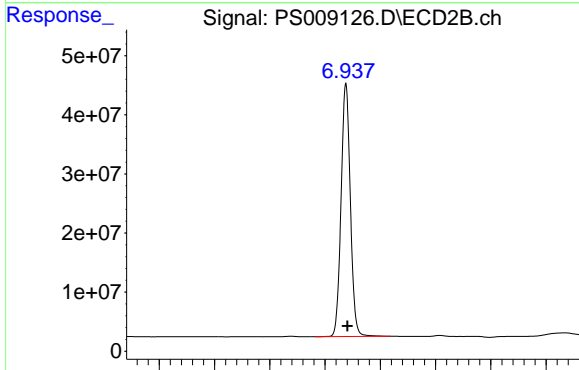




#4 2,4-DCAA

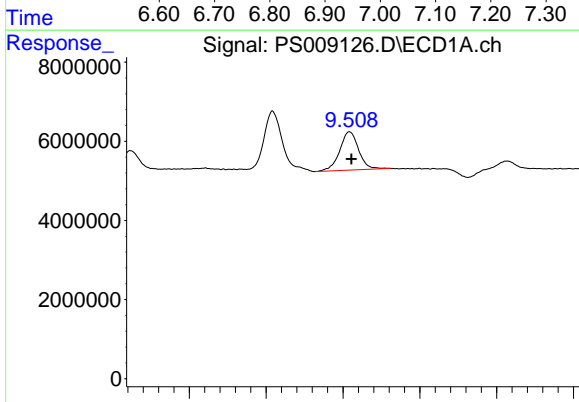
R.T.: 7.245 min  
 Delta R.T.: -0.002 min  
 Response: 919490613  
 Conc: 420.51 ng/ml

Instrument :  
 ECD\_S  
 ClientSampleId :  
 I.BLK



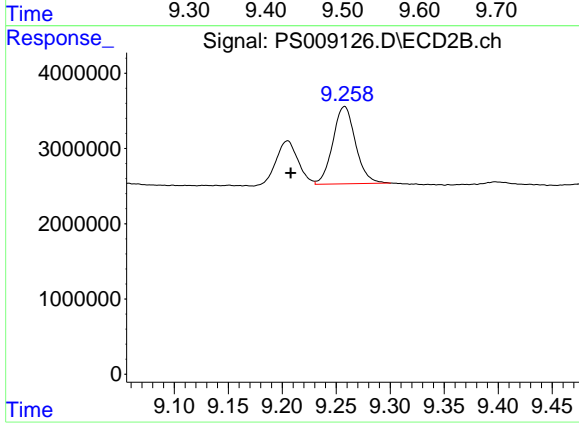
#4 2,4-DCAA

R.T.: 6.938 min  
 Delta R.T.: -0.003 min  
 Response: 499476442  
 Conc: 518.37 ng/ml



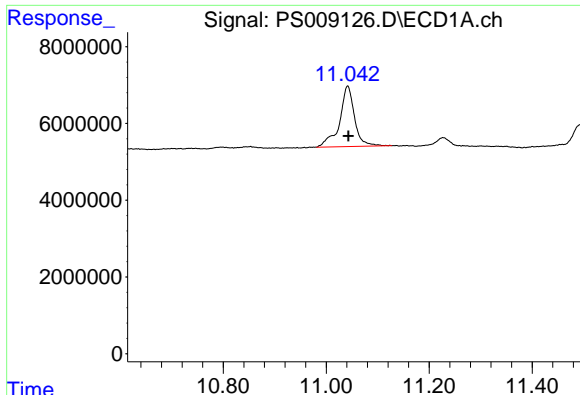
#12 2,4,5-T

R.T.: 9.508 min  
 Delta R.T.: -0.003 min  
 Response: 16558027  
 Conc: 1.55 ng/ml



#12 2,4,5-T

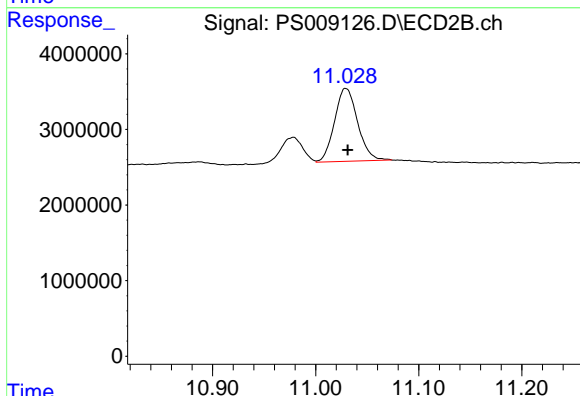
R.T.: 9.258 min  
 Delta R.T.: 0.050 min  
 Response: 15016242  
 Conc: 2.77 ng/ml



#15 Picloram

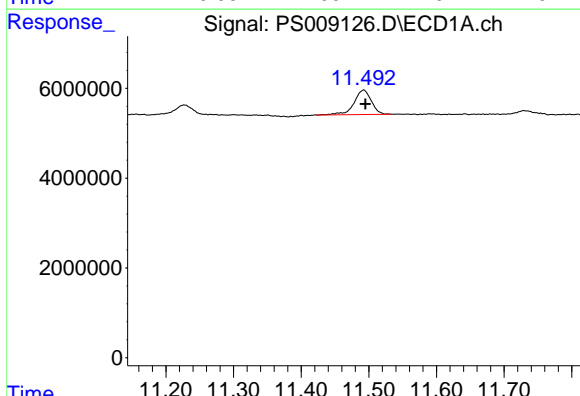
R.T.: 11.042 min  
 Delta R.T.: -0.002 min  
 Response: 31843705  
 Conc: 2.33 ng/ml

Instrument :  
 ECD\_S  
 ClientSampled :  
 I.BLK



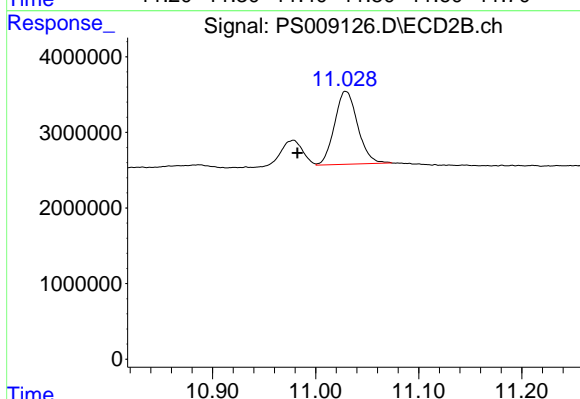
#15 Picloram

R.T.: 11.029 min  
 Delta R.T.: -0.002 min  
 Response: 15030148  
 Conc: 2.07 ng/ml



#16 DCPA

R.T.: 11.492 min  
 Delta R.T.: -0.002 min  
 Response: 9641501  
 Conc: N.D.



#16 DCPA

R.T.: 11.029 min  
 Delta R.T.: 0.047 min  
 Response: 15030148  
 Conc: 2.17 ng/ml