

Data Path : Z:\pestpcbsrv\HPCHEM1\ECD_S\Data\PS030420\
 Data File : PS009127.D
 Signal(s) : Signal #1: ECD1A.ch Signal #2: ECD2B.ch
 Acq On : 05 Mar 2020 03:12
 Operator : DD\AJ
 Sample : HSTDCCC750
 Misc :
 ALS Vial : 3 Sample Multiplier: 1

Instrument :
 ECD_S
 ClientSampleId :
 HSTDCCC750

Integration File signal 1: autoint1.e
 Integration File signal 2: autoint2.e
 Quant Time: Mar 05 04:11:24 2020
 Quant Method : Z:\pestpcbsrv\HPCHEM1\ECD_S\Method\PS022020.M
 Quant Title : 8080.M
 QLast Update : Thu Feb 20 11:30:26 2020
 Response via : Initial Calibration
 Integrator: ChemStation

Volume Inj. : 2 µl
 Signal #1 Phase : Rtx-CLPesticides Signal #2 Phase: Rtx-CLPesticides2
 Signal #1 Info : 30M x 0.32mm x0.5 Signal #2 Info : 30M x 0.32mm x 0.25µm

	Compound	RT#1	RT#2	Resp#1	Resp#2	ng/ml	ng/ml

System Monitoring Compounds							
4) S	2,4-DCAA	7.244	6.938	1632.9E6	771.4E6	746.797	800.574
Target Compounds							
1) T	Dalapon	3.050	2.633	1798.2E6	873.4E6	601.053	597.278
2) T	3,5-DICHL...	6.453	6.082	1986.2E6	1046.1E6	693.595	716.866
3) T	4-Nitroph...	7.074	6.539	715.5E6	410.7E6	668.762	710.495
5) T	DICAMBA	7.438	7.108	5790.7E6	3087.8E6	712.800	745.975
6) T	MCP P	7.608	7.207	417.6E6	238.5E6	69.437	78.688
7) T	MCPA	7.758	7.424	598.1E6	327.5E6	74.358	74.032
8) T	DICHLORPROP	8.132	7.736	1381.3E6	742.9E6	711.105	741.517
9) T	2,4-D	8.360	8.030	1426.2E6	869.8E6	688.226	734.172
10) T	Pentachlo...	8.674	8.464	19896.3E6	10296.3E6	685.587	724.713
11) T	2,4,5-TP ...	9.224	8.825	7715.2E6	4054.2E6	701.663	748.435
12) T	2,4,5-T	9.508	9.204	7494.8E6	3975.4E6	700.966	734.397
13) T	2,4-DB	10.061	9.712	1048.3E6	523.9E6	726.435	745.765
14) T	DINOSEB	11.227	10.046	5668.7E6	2836.7E6	670.037	717.409
15) T	Picloram	11.040	11.027	7484.7E6	4408.9E6	546.686	606.737
16) T	DCPA	11.492	10.978	9715.3E6	5206.0E6	707.039	752.379

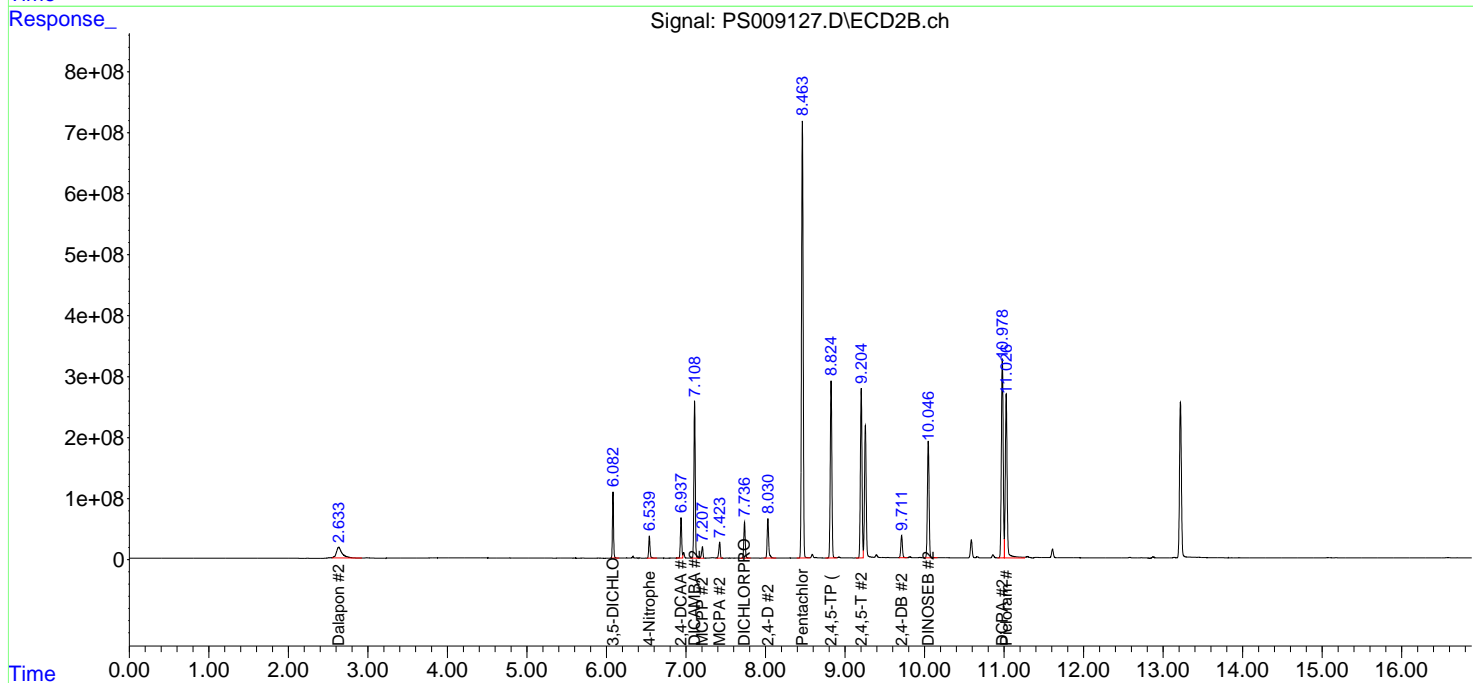
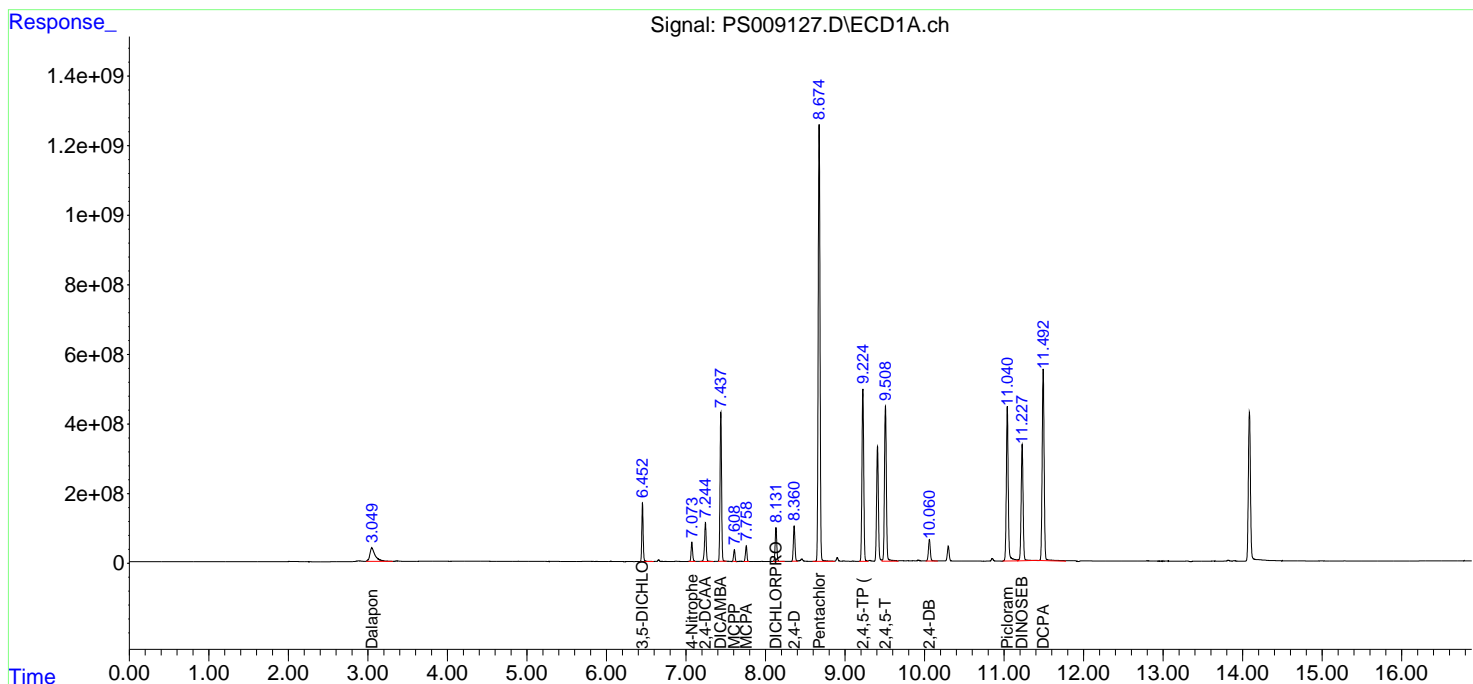
(f)=RT Delta > 1/2 Window (#)=Amounts differ by > 25% (m)=manual int.

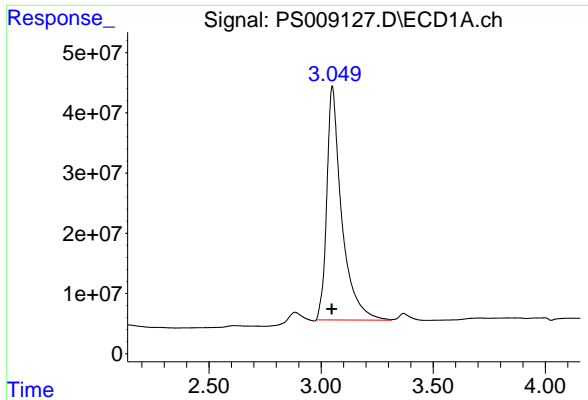
Data Path : Z:\pestpcbsrv\HPCHEM1\ECD_S\Data\PS030420\
 Data File : PS009127.D
 Signal(s) : Signal #1: ECD1A.ch Signal #2: ECD2B.ch
 Acq On : 05 Mar 2020 03:12
 Operator : DD\AJ
 Sample : HSTDCCC750
 Misc :
 ALS Vial : 3 Sample Multiplier: 1

Instrument :
 ECD_S
 ClientSampleId :
 HSTDCCC750

Integration File signal 1: autoint1.e
 Integration File signal 2: autoint2.e
 Quant Time: Mar 05 04:11:24 2020
 Quant Method : Z:\pestpcbsrv\HPCHEM1\ECD_S\Method\PS022020.M
 Quant Title : 8080.M
 QLast Update : Thu Feb 20 11:30:26 2020
 Response via : Initial Calibration
 Integrator: ChemStation

Volume Inj. : 2 µl
 Signal #1 Phase : Rtx-CLPesticides Signal #2 Phase: Rtx-CLPesticides2
 Signal #1 Info : 30M x 0.32mm x0.5 Signal #2 Info : 30M x 0.32mm x 0.25µm

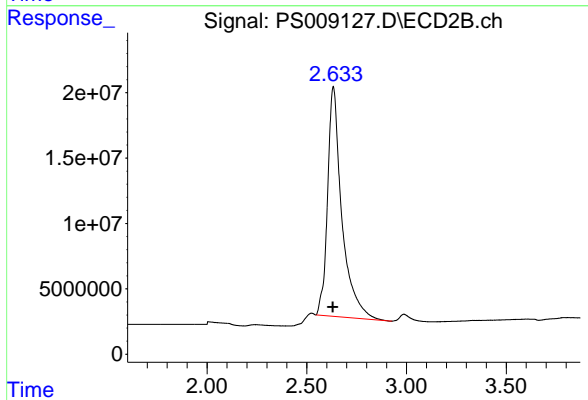




#1 Dalapon

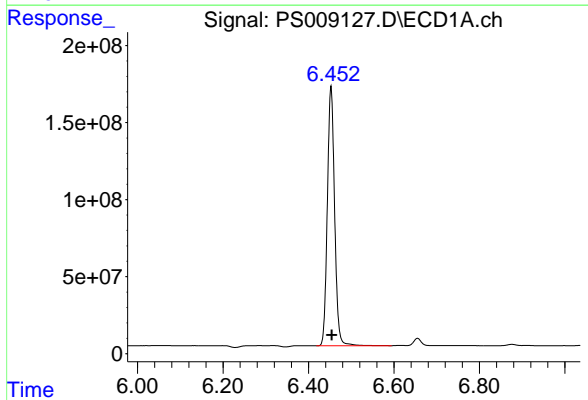
R.T.: 3.050 min
 Delta R.T.: 0.002 min
 Response: 1798214556
 Conc: 601.05 ng/ml

Instrument :
 ECD_S
 ClientSampleId :
 HSTDCCC750



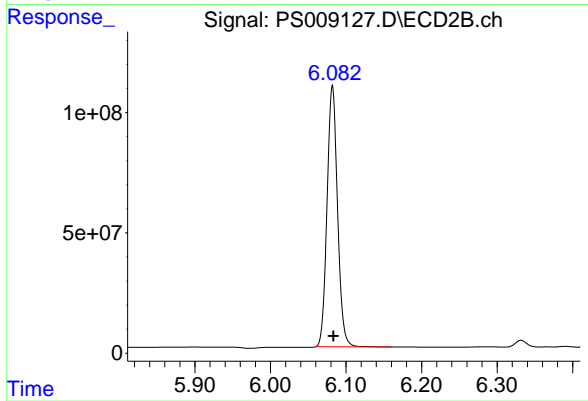
#1 Dalapon

R.T.: 2.633 min
 Delta R.T.: 0.003 min
 Response: 873352666
 Conc: 597.28 ng/ml



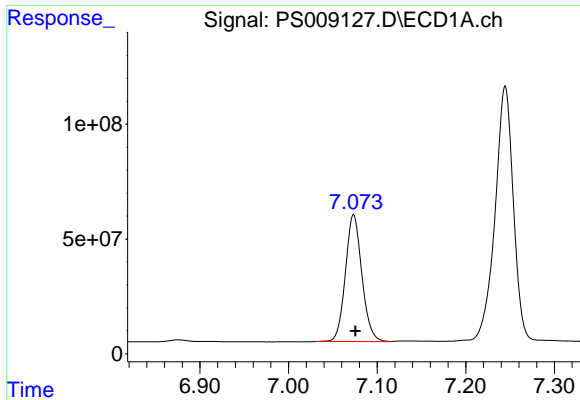
#2 3,5-DICHLOROBENZOIC ACID

R.T.: 6.453 min
 Delta R.T.: -0.002 min
 Response: 1986194914
 Conc: 693.59 ng/ml



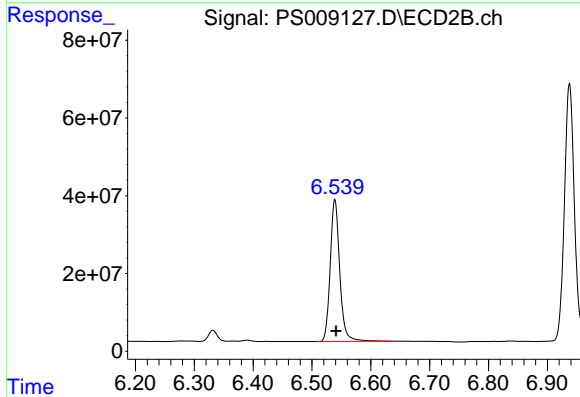
#2 3,5-DICHLOROBENZOIC ACID

R.T.: 6.082 min
 Delta R.T.: -0.001 min
 Response: 1046101586
 Conc: 716.87 ng/ml

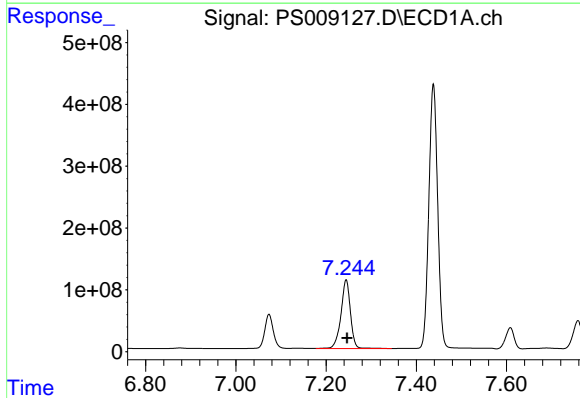


#3 4-Nitrophenol
 R.T.: 7.074 min
 Delta R.T.: -0.002 min
 Response: 715474202
 Conc: 668.76 ng/ml

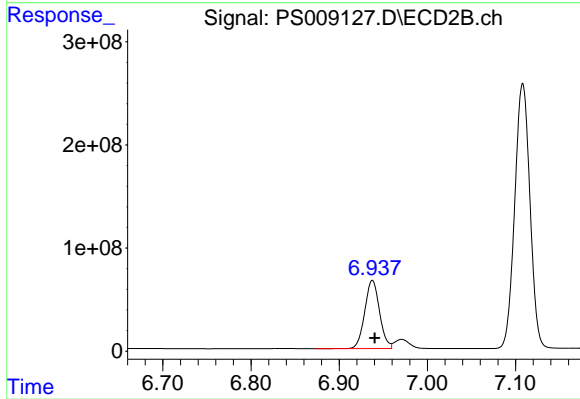
Instrument :
 ECD_S
 ClientSampleId :
 HSTDCCC750



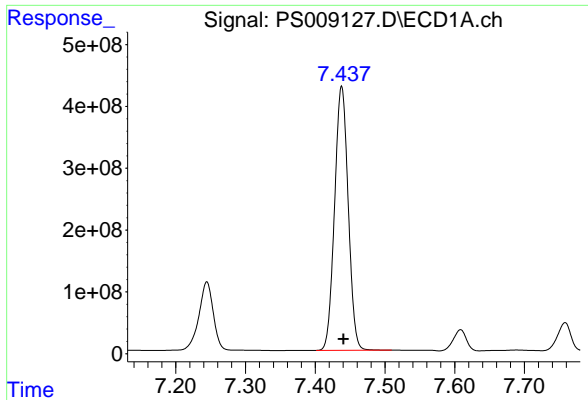
#3 4-Nitrophenol
 R.T.: 6.539 min
 Delta R.T.: -0.002 min
 Response: 410692804
 Conc: 710.50 ng/ml



#4 2,4-DCAA
 R.T.: 7.244 min
 Delta R.T.: -0.002 min
 Response: 1632939521
 Conc: 746.80 ng/ml

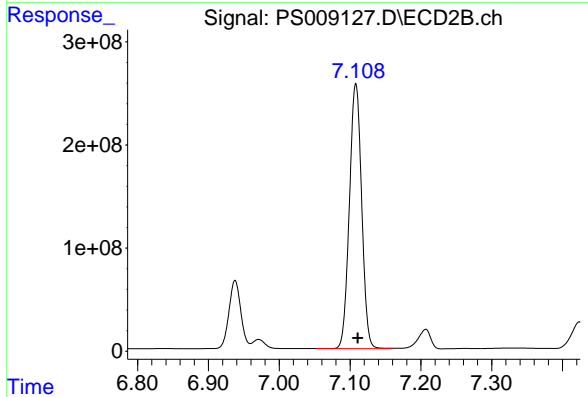


#4 2,4-DCAA
 R.T.: 6.938 min
 Delta R.T.: -0.003 min
 Response: 771397812
 Conc: 800.57 ng/ml

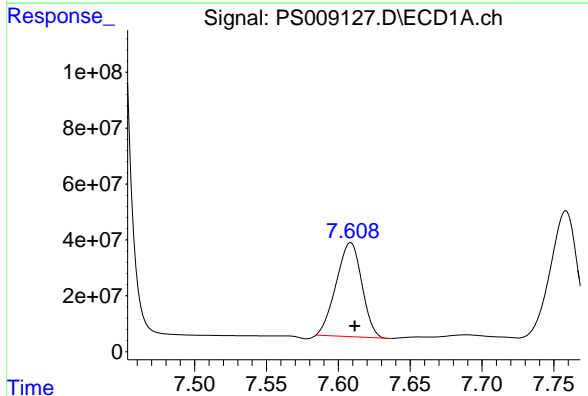


#5 DICAMBA
 R.T.: 7.438 min
 Delta R.T.: -0.002 min
 Response: 5790669325
 Conc: 712.80 ng/ml

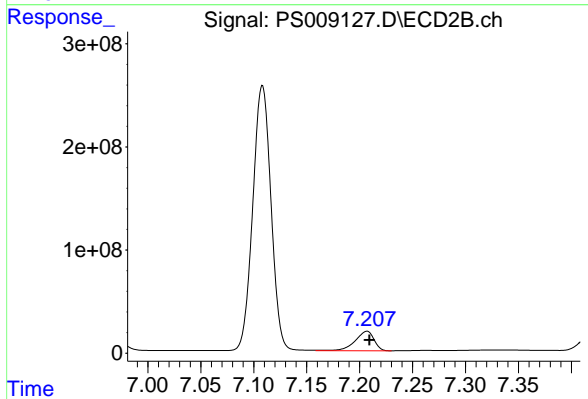
Instrument :
 ECD_S
 ClientSampleId :
 HSTDCCC750



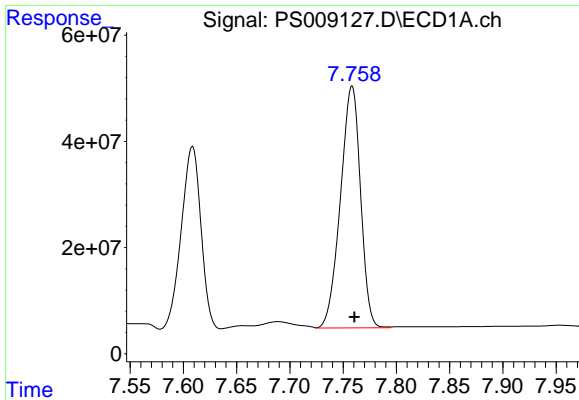
#5 DICAMBA
 R.T.: 7.108 min
 Delta R.T.: -0.003 min
 Response: 3087835394
 Conc: 745.97 ng/ml



#6 MCP
 R.T.: 7.608 min
 Delta R.T.: -0.003 min
 Response: 417630415
 Conc: 69.44 ug/ml

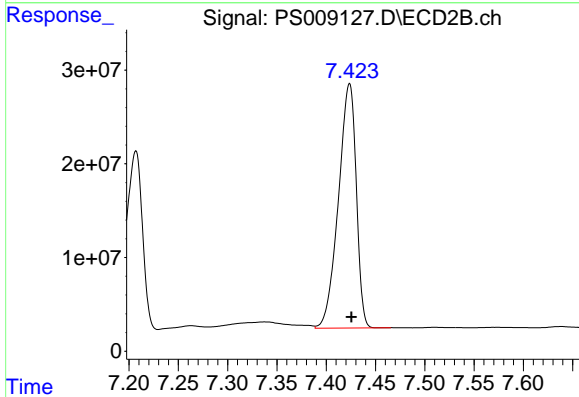


#6 MCP
 R.T.: 7.207 min
 Delta R.T.: -0.002 min
 Response: 238534693
 Conc: 78.69 ug/ml

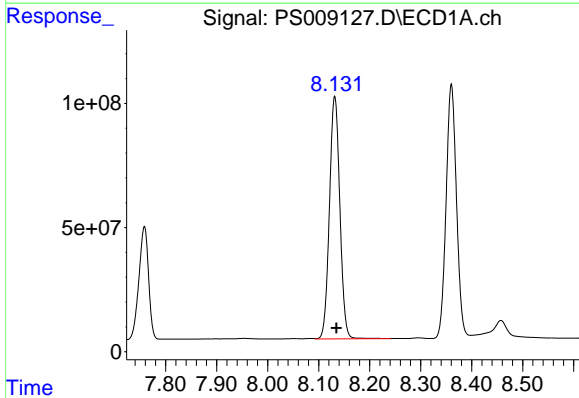


#7 MCPA
 R.T.: 7.758 min
 Delta R.T.: -0.003 min
 Response: 598129575
 Conc: 74.36 ug/ml

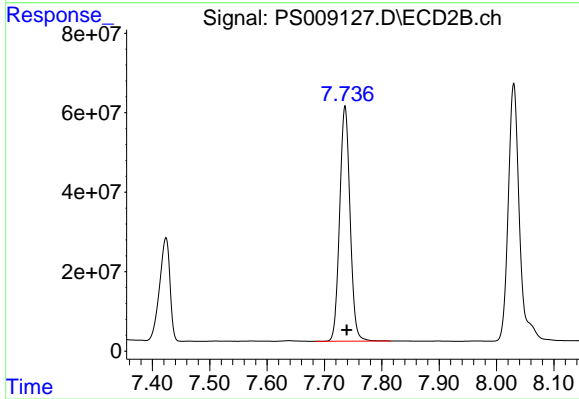
Instrument :
 ECD_S
 ClientSampleId :
 HSTDCCC750



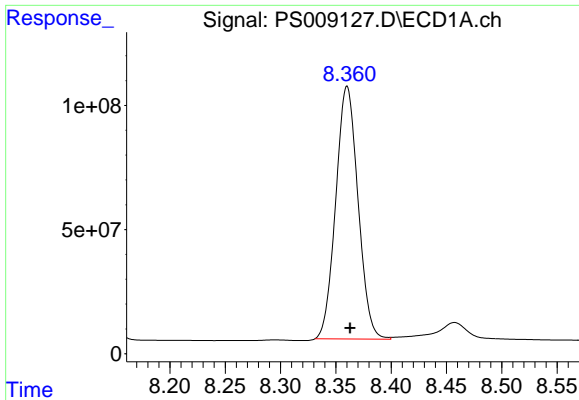
#7 MCPA
 R.T.: 7.424 min
 Delta R.T.: -0.002 min
 Response: 327537003
 Conc: 74.03 ug/ml



#8 DICHLORPROP
 R.T.: 8.132 min
 Delta R.T.: -0.003 min
 Response: 1381328633
 Conc: 711.11 ng/ml

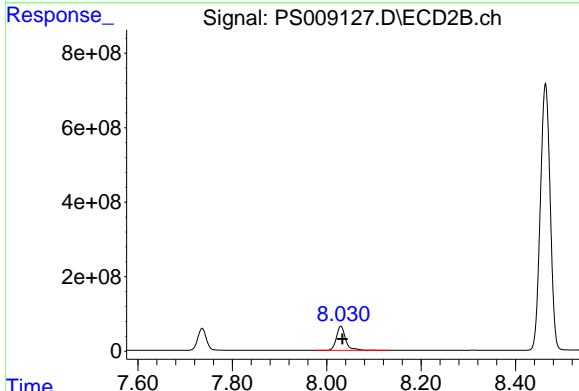


#8 DICHLORPROP
 R.T.: 7.736 min
 Delta R.T.: -0.003 min
 Response: 742949409
 Conc: 741.52 ng/ml

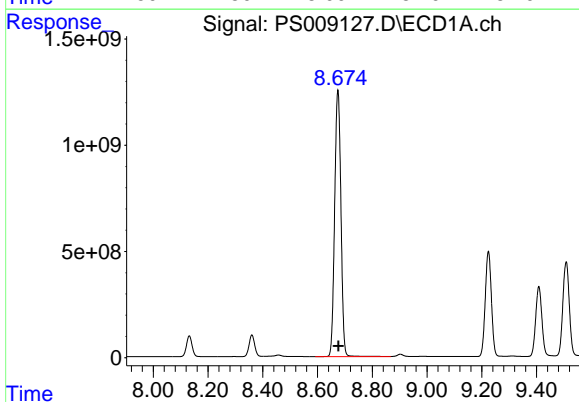


#9 2,4-D
 R.T.: 8.360 min
 Delta R.T.: -0.003 min
 Response: 1426231529
 Conc: 688.23 ng/ml

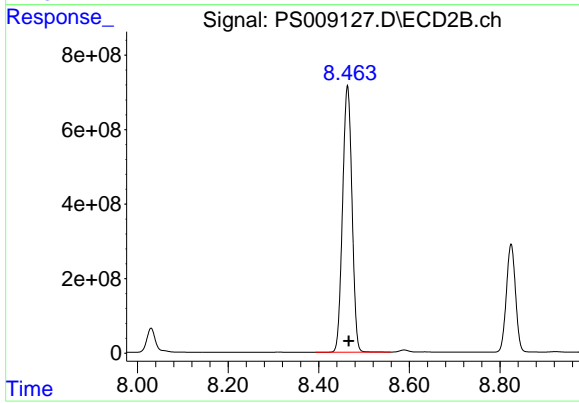
Instrument :
 ECD_S
 ClientSampleId :
 HSTDCCC750



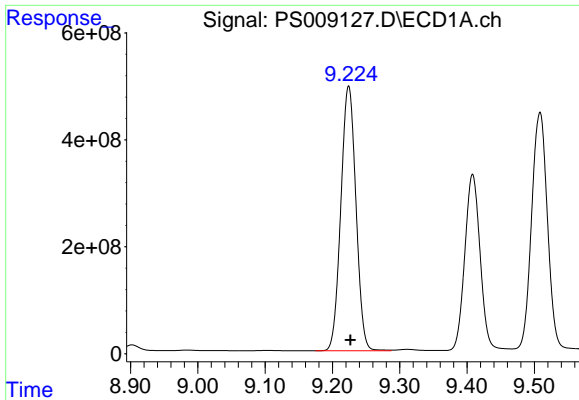
#9 2,4-D
 R.T.: 8.030 min
 Delta R.T.: -0.003 min
 Response: 869847273
 Conc: 734.17 ng/ml



#10 Pentachlorophenol
 R.T.: 8.674 min
 Delta R.T.: -0.002 min
 Response: 19896320401
 Conc: 685.59 ng/ml

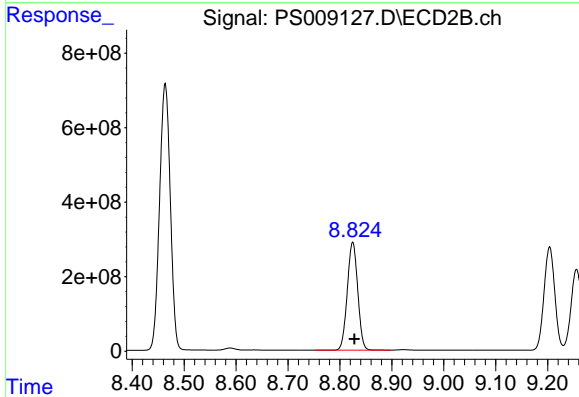


#10 Pentachlorophenol
 R.T.: 8.464 min
 Delta R.T.: -0.003 min
 Response: 10296280718
 Conc: 724.71 ng/ml

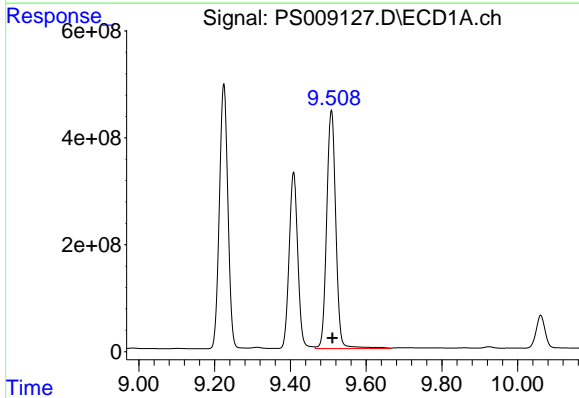


#11 2,4,5-TP (SILVEX)
 R.T.: 9.224 min
 Delta R.T.: -0.003 min
 Response: 7715238794
 Conc: 701.66 ng/ml

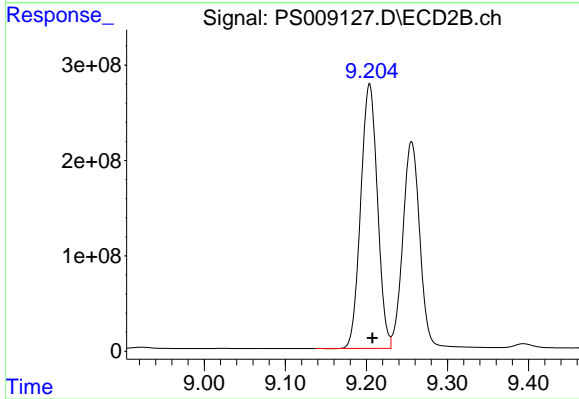
Instrument :
 ECD_S
 ClientSampleId :
 HSTDCCC750



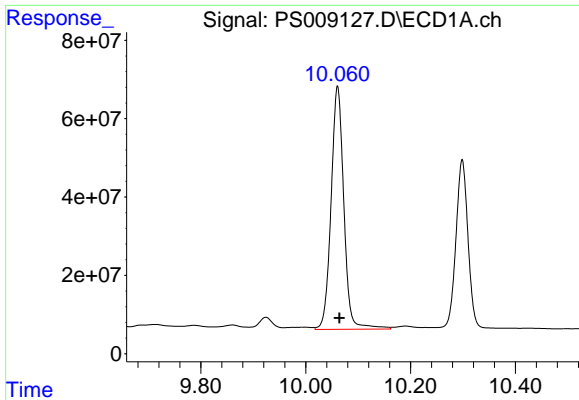
#11 2,4,5-TP (SILVEX)
 R.T.: 8.825 min
 Delta R.T.: -0.003 min
 Response: 4054207279
 Conc: 748.43 ng/ml



#12 2,4,5-T
 R.T.: 9.508 min
 Delta R.T.: -0.003 min
 Response: 7494785266
 Conc: 700.97 ng/ml

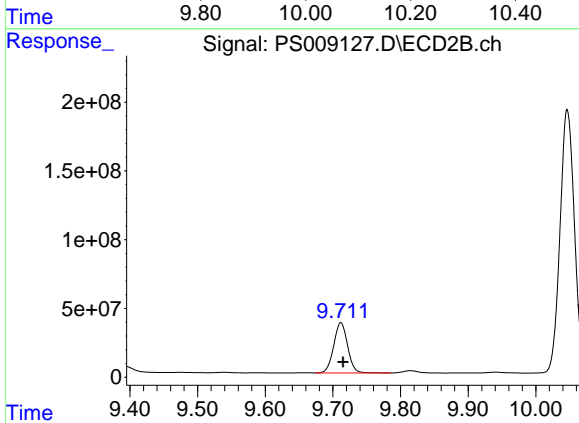


#12 2,4,5-T
 R.T.: 9.204 min
 Delta R.T.: -0.004 min
 Response: 3975359265
 Conc: 734.40 ng/ml

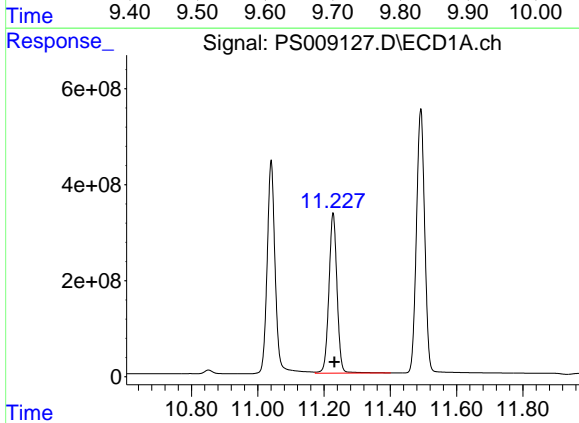


#13 2,4-DB
R.T.: 10.061 min
Delta R.T.: -0.004 min
Response: 1048271597
Conc: 726.43 ng/ml

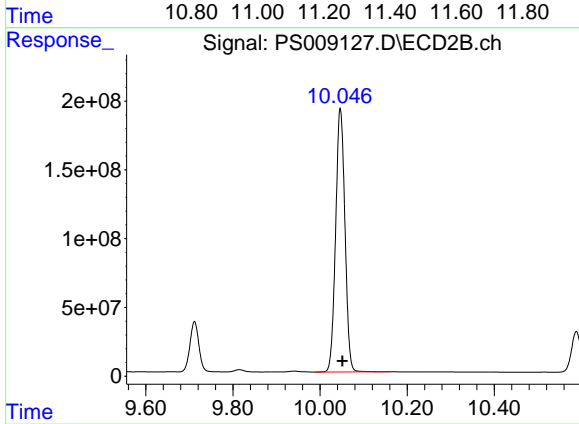
Instrument :
ECD_S
ClientSampleId :
HSTDCCC750



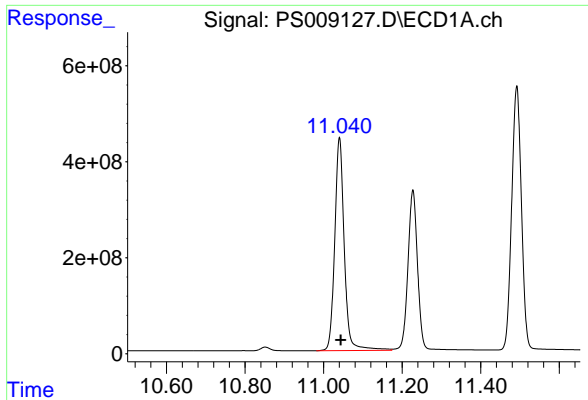
#13 2,4-DB
R.T.: 9.712 min
Delta R.T.: -0.003 min
Response: 523853075
Conc: 745.76 ng/ml



#14 DINOSEB
R.T.: 11.227 min
Delta R.T.: -0.004 min
Response: 5668725494
Conc: 670.04 ng/ml

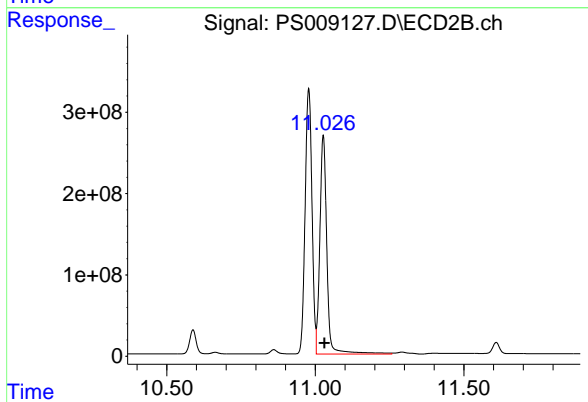


#14 DINOSEB
R.T.: 10.046 min
Delta R.T.: -0.005 min
Response: 2836677810
Conc: 717.41 ng/ml

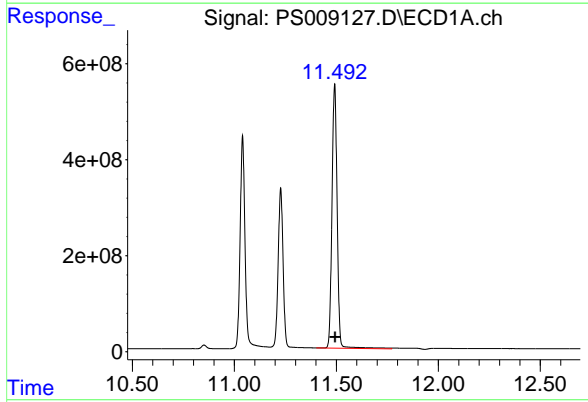


#15 Picloram
R.T.: 11.040 min
Delta R.T.: -0.003 min
Response: 7484659476
Conc: 546.69 ng/ml

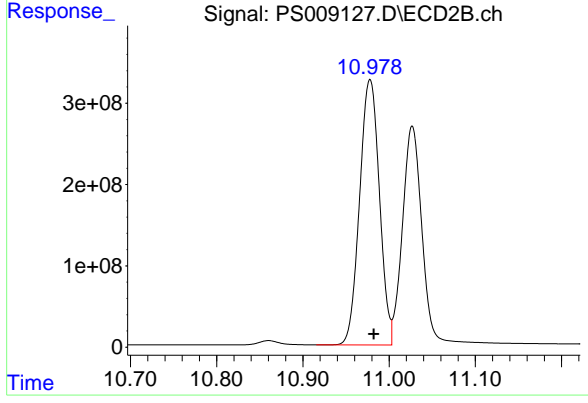
Instrument :
ECD_S
ClientSampleId :
HSTDCCC750



#15 Picloram
R.T.: 11.027 min
Delta R.T.: -0.004 min
Response: 4408866842
Conc: 606.74 ng/ml



#16 DCPA
R.T.: 11.492 min
Delta R.T.: -0.003 min
Response: 9715278106
Conc: 707.04 ng/ml



#16 DCPA
R.T.: 10.978 min
Delta R.T.: -0.004 min
Response: 5205976845
Conc: 752.38 ng/ml