

Data Path : Z:\pestpcbsrv\HPCHEM1\ECD_S\Data\PS030521\
 Data File : PS014160.D
 Signal(s) : Signal #1: ECD1A.ch Signal #2: ECD2B.ch
 Acq On : 05 Mar 2021 18:32
 Operator : DD\AJ
 Sample : PB134956BS
 Misc :
 ALS Vial : 23 Sample Multiplier: 1

Instrument :
 ECD_S
 ClientSampleId :
 PB134956BS

Integration File signal 1: autoint1.e
 Integration File signal 2: autoint2.e
 Quant Time: Mar 06 04:28:50 2021
 Quant Method : Z:\pestpcbsrv\HPCHEM1\ECD_S\Method\PS030521.M
 Quant Title : 8080.M
 QLast Update : Sat Mar 06 03:17:26 2021
 Response via : Initial Calibration
 Integrator: ChemStation

Volume Inj. : 2 µl
 Signal #1 Phase : Rtx-CLPesticides Signal #2 Phase: Rtx-CLPesticides2
 Signal #1 Info : 30M x 0.32mm x0.5 Signal #2 Info : 30M x 0.32mm x 0.25µm

| | Compound | RT#1 | RT#2 | Resp#1 | Resp#2 | ng/ml | ng/ml |
|-----------------------------|--------------|--------|--------|----------|----------|---------|-----------|
| ----- | | | | | | | |
| System Monitoring Compounds | | | | | | | |
| 4) S | 2,4-DCAA | 7.204 | 6.900 | 604.9E6 | 276.7E6 | 600.737 | 727.431 |
| Target Compounds | | | | | | | |
| 1) T | Dalapon | 3.023 | 2.617 | 631.5E6 | 331.1E6 | 537.946 | 628.178 |
| 2) T | 3,5-DICHL... | 6.420 | 6.057 | 788.1E6 | 361.7E6 | 569.906 | 628.276 |
| 3) T | 4-Nitroph... | 7.038 | 6.516 | 256.4E6 | 115.5E6 | 493.565 | 470.945 |
| 5) T | DICAMBA | 7.393 | 7.066 | 2170.5E6 | 890.8E6 | 543.295 | 550.975 |
| 6) T | MCP P | 7.559 | 7.159 | 186.5E6 | 74212808 | 63.217 | 55.990 |
| 7) T | MCPA | 7.707 | 7.372 | 220.8E6 | 127.3E6 | 50.942 | 64.633 # |
| 8) T | DICHLORPROP | 8.083 | 7.691 | 559.9E6 | 236.3E6 | 573.469 | 577.426 |
| 9) T | 2,4-D | 8.315 | 7.988 | 697.6E6 | 300.5E6 | 645.266 | 622.615 |
| 10) T | Pentachlo... | 8.621 | 8.412 | 8657.7E6 | 3268.3E6 | 589.956 | 595.492 |
| 11) T | 2,4,5-TP ... | 9.169 | 8.772 | 3539.0E6 | 1427.7E6 | 619.750 | 643.215 |
| 12) T | 2,4,5-T | 9.455 | 9.154 | 3428.7E6 | 1269.4E6 | 572.009 | 586.326 |
| 13) T | 2,4-DB | 10.008 | 9.661 | 449.3E6 | 169.5E6 | 424.818 | 591.600 # |
| 14) T | DINOSEB | 11.161 | 9.988 | 2486.7E6 | 850.8E6 | 537.612 | 540.520 |
| 15) T | Picloram | 11.000 | 10.987 | 3297.5E6 | 1368.1E6 | 413.119 | 414.431 |
| 16) T | DCPA | 11.428 | 10.914 | 3889.9E6 | 1650.0E6 | 454.681 | 491.555 |
| ----- | | | | | | | |

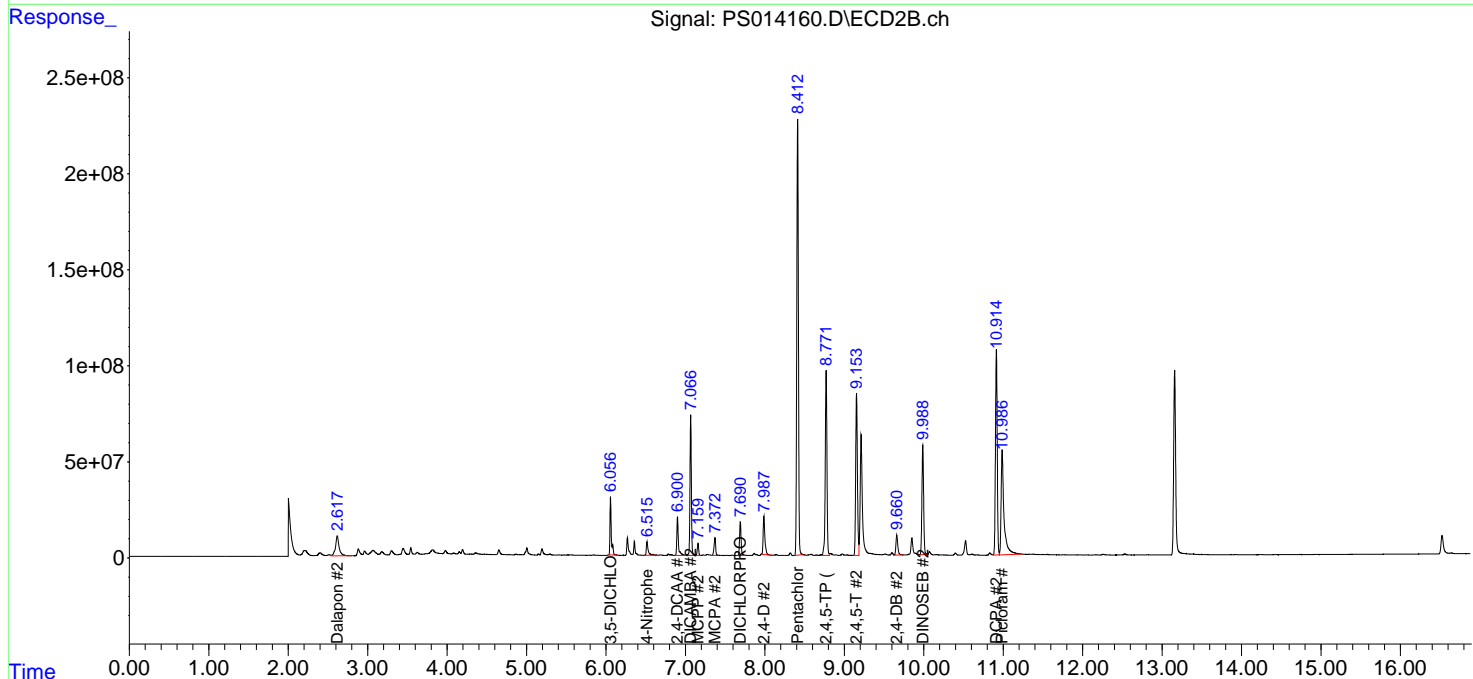
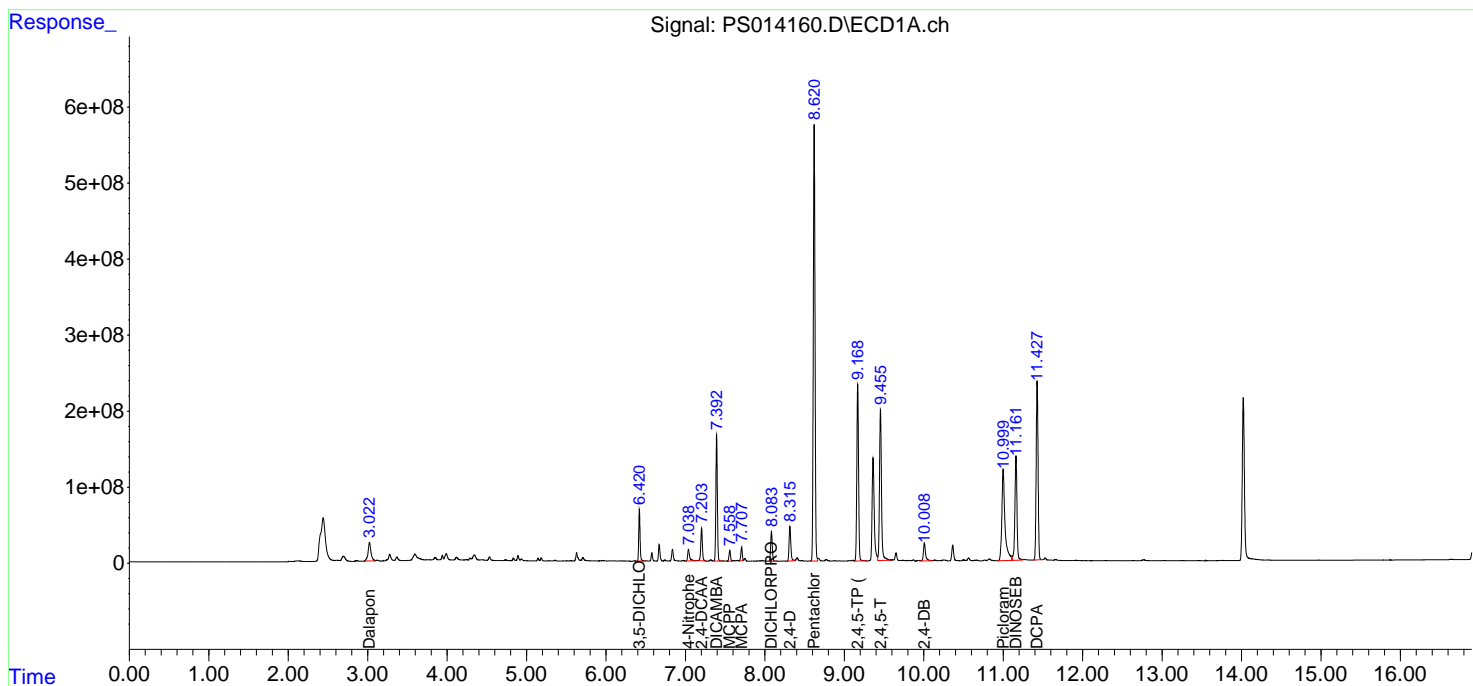
(f)=RT Delta > 1/2 Window (#)=Amounts differ by > 25% (m)=manual int.

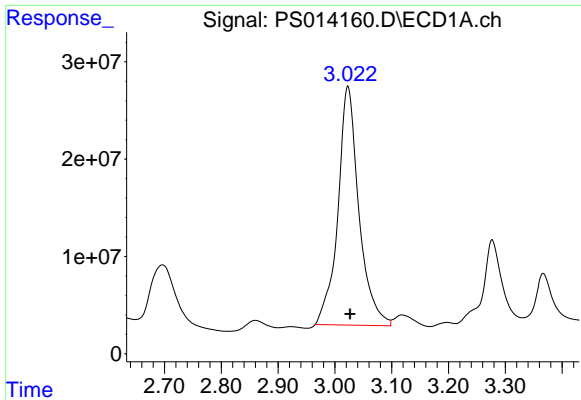
Data Path : Z:\pestpcbsrv\HPCHEM1\ECD_S\Data\PS030521\
 Data File : PS014160.D
 Signal(s) : Signal #1: ECD1A.ch Signal #2: ECD2B.ch
 Acq On : 05 Mar 2021 18:32
 Operator : DD\AJ
 Sample : PB134956BS
 Misc :
 ALS Vial : 23 Sample Multiplier: 1

Instrument :
 ECD_S
 ClientSampled :
 PB134956BS

Integration File signal 1: autoint1.e
 Integration File signal 2: autoint2.e
 Quant Time: Mar 06 04:28:50 2021
 Quant Method : Z:\pestpcbsrv\HPCHEM1\ECD_S\Method\PS030521.M
 Quant Title : 8080.M
 QLast Update : Sat Mar 06 03:17:26 2021
 Response via : Initial Calibration
 Integrator: ChemStation

Volume Inj. : 2 µl
 Signal #1 Phase : Rtx-CLPesticides Signal #2 Phase: Rtx-CLPesticides2
 Signal #1 Info : 30M x 0.32mm x0.5 Signal #2 Info : 30M x 0.32mm x 0.25µm

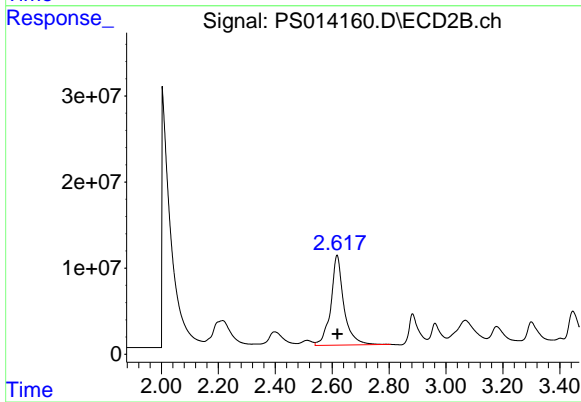




#1 Dalapon

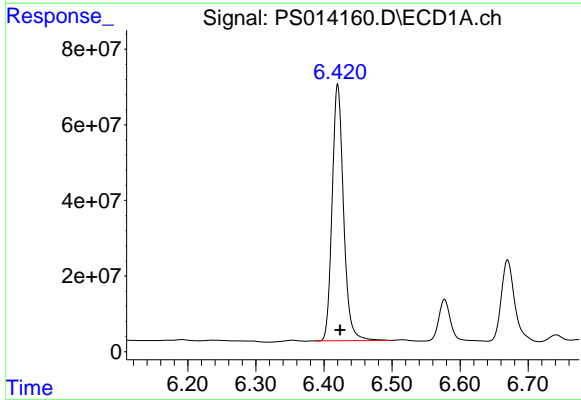
R.T.: 3.023 min
Delta R.T.: -0.004 min
Response: 631493703
Conc: 537.95 ng/ml

Instrument :
ECD_S
ClientSampleId :
PB134956BS



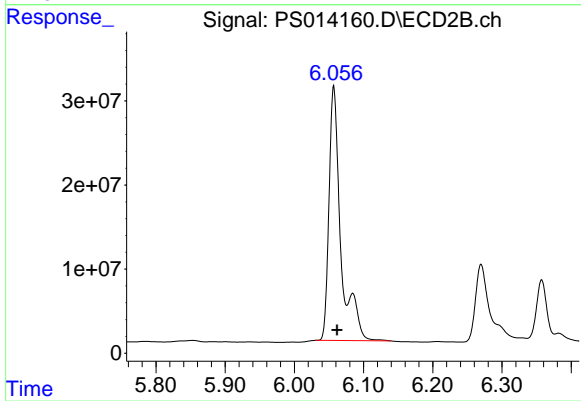
#1 Dalapon

R.T.: 2.617 min
Delta R.T.: -0.001 min
Response: 331130391
Conc: 628.18 ng/ml



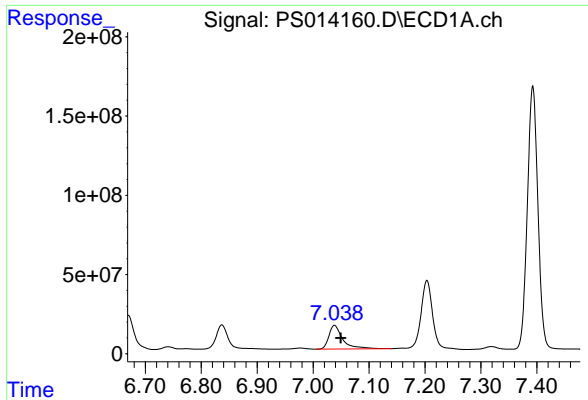
#2 3,5-DICHLOROBENZOIC ACID

R.T.: 6.420 min
Delta R.T.: -0.003 min
Response: 788123540
Conc: 569.91 ng/ml



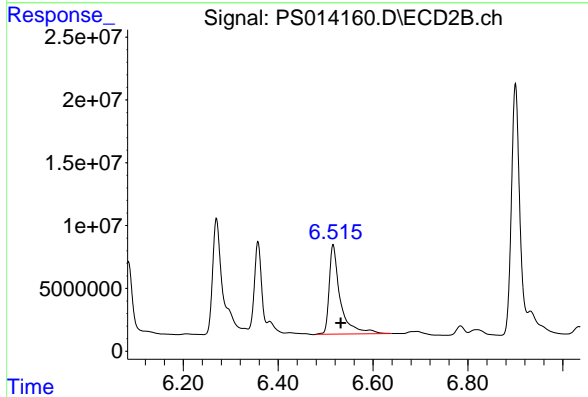
#2 3,5-DICHLOROBENZOIC ACID

R.T.: 6.057 min
Delta R.T.: -0.005 min
Response: 361670192
Conc: 628.28 ng/ml

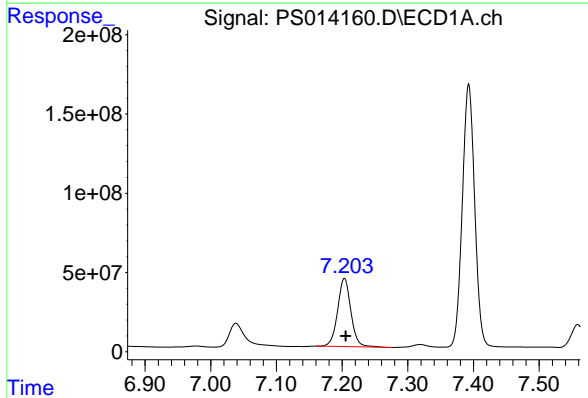


#3 4-Nitrophenol
 R.T.: 7.038 min
 Delta R.T.: -0.011 min
 Response: 256359933
 Conc: 493.56 ng/ml

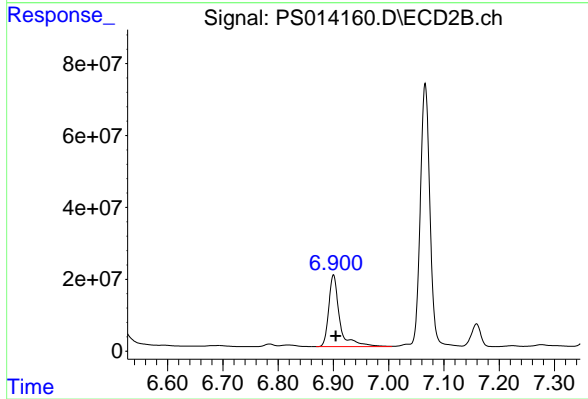
Instrument :
 ECD_S
 ClientSampleId :
 PB134956BS



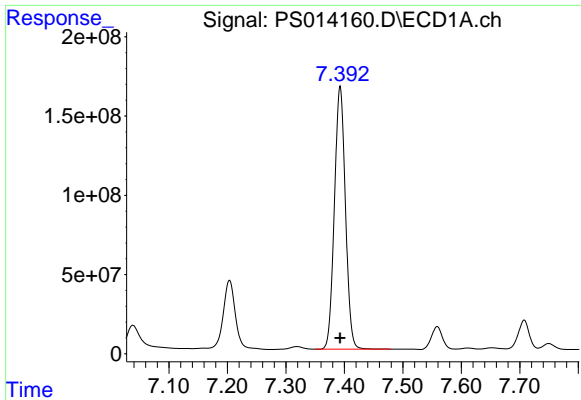
#3 4-Nitrophenol
 R.T.: 6.516 min
 Delta R.T.: -0.016 min
 Response: 115478713
 Conc: 470.95 ng/ml



#4 2,4-DCAA
 R.T.: 7.204 min
 Delta R.T.: -0.002 min
 Response: 604926109
 Conc: 600.74 ng/ml

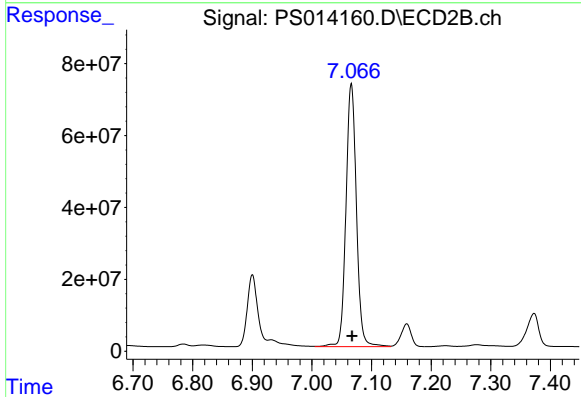


#4 2,4-DCAA
 R.T.: 6.900 min
 Delta R.T.: -0.004 min
 Response: 276749179
 Conc: 727.43 ng/ml

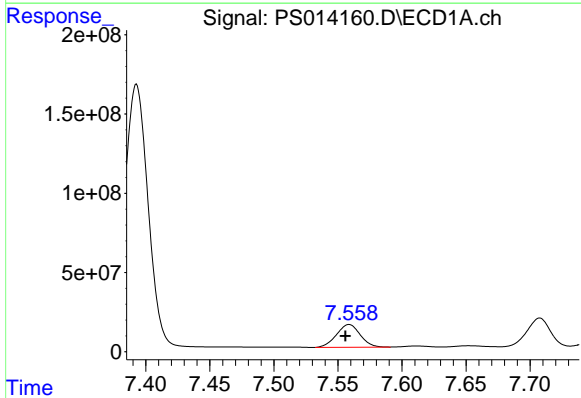


#5 DICAMBA
 R.T.: 7.393 min
 Delta R.T.: 0.000 min
 Response: 2170537153
 Conc: 543.29 ng/ml

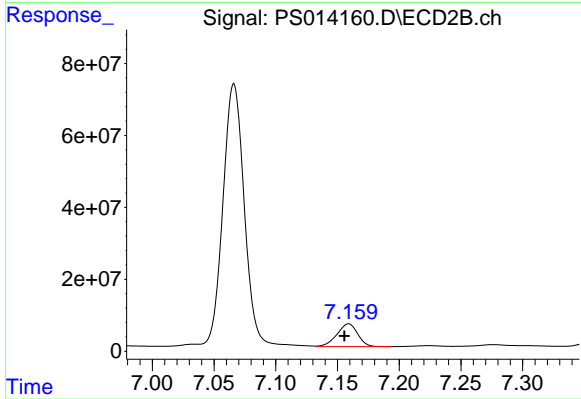
Instrument :
 ECD_S
 ClientSampleId :
 PB134956BS



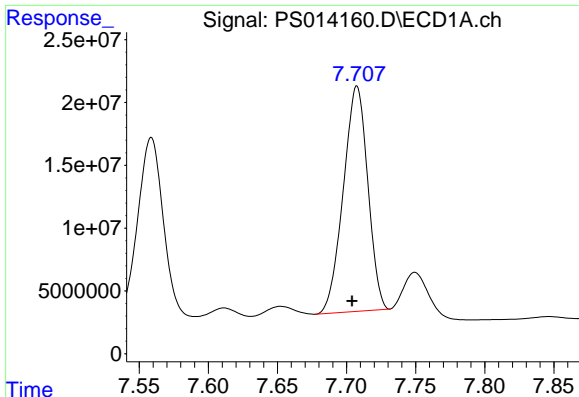
#5 DICAMBA
 R.T.: 7.066 min
 Delta R.T.: -0.001 min
 Response: 890793950
 Conc: 550.98 ng/ml



#6 MCPP
 R.T.: 7.559 min
 Delta R.T.: 0.003 min
 Response: 186490266
 Conc: 63.22 ug/ml



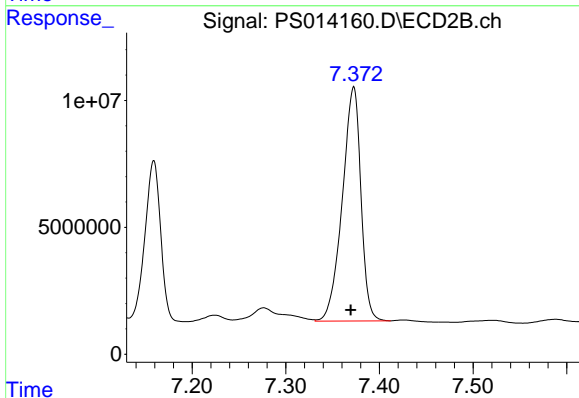
#6 MCPP
 R.T.: 7.159 min
 Delta R.T.: 0.003 min
 Response: 74212808
 Conc: 55.99 ug/ml



#7 MCPA

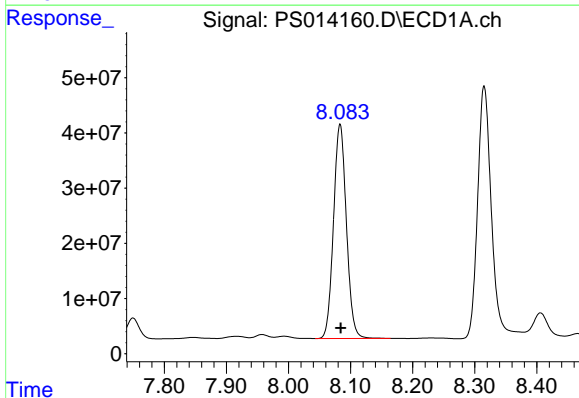
R.T.: 7.707 min
 Delta R.T.: 0.003 min
 Response: 220817680
 Conc: 50.94 ug/ml

Instrument :
 ECD_S
 ClientSampleId :
 PB134956BS



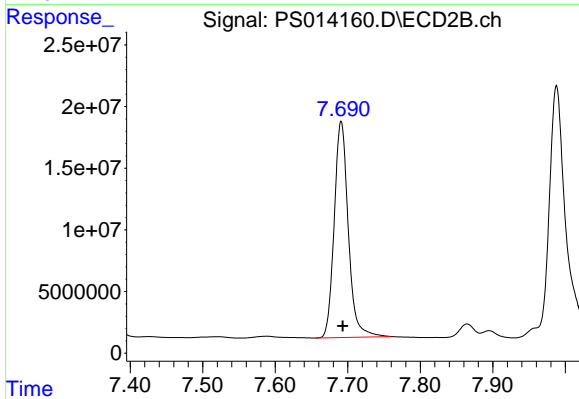
#7 MCPA

R.T.: 7.372 min
 Delta R.T.: 0.003 min
 Response: 127260780
 Conc: 64.63 ug/ml



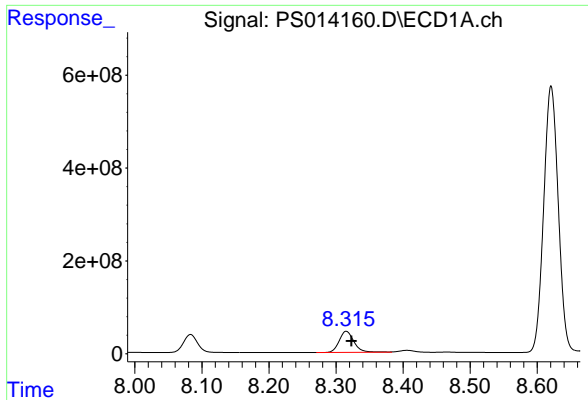
#8 DICHLORPROP

R.T.: 8.083 min
 Delta R.T.: -0.001 min
 Response: 559922441
 Conc: 573.47 ng/ml



#8 DICHLORPROP

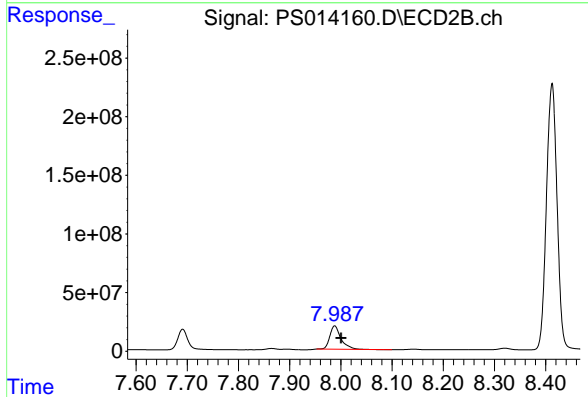
R.T.: 7.691 min
 Delta R.T.: -0.002 min
 Response: 236257663
 Conc: 577.43 ng/ml



#9 2,4-D

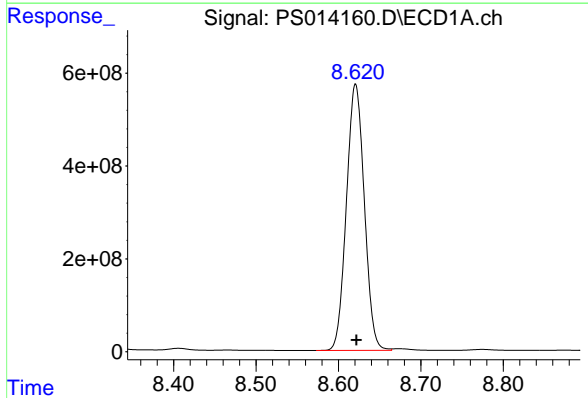
R.T.: 8.315 min
 Delta R.T.: -0.008 min
 Response: 697645062
 Conc: 645.27 ng/ml

Instrument :
 ECD_S
 ClientSampleId :
 PB134956BS



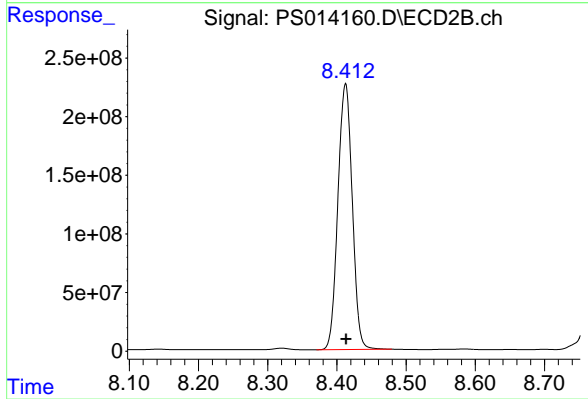
#9 2,4-D

R.T.: 7.988 min
 Delta R.T.: -0.012 min
 Response: 300511466
 Conc: 622.61 ng/ml



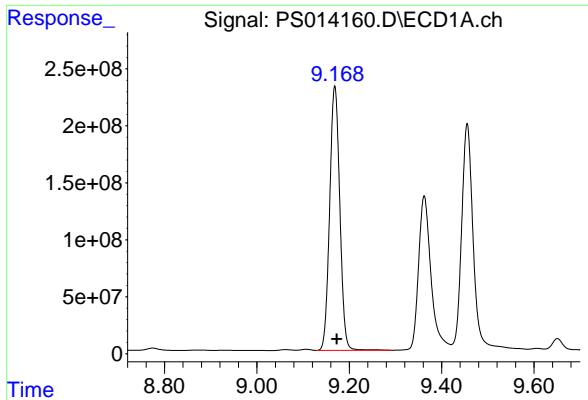
#10 Pentachlorophenol

R.T.: 8.621 min
 Delta R.T.: 0.000 min
 Response: 8657735070
 Conc: 589.96 ng/ml



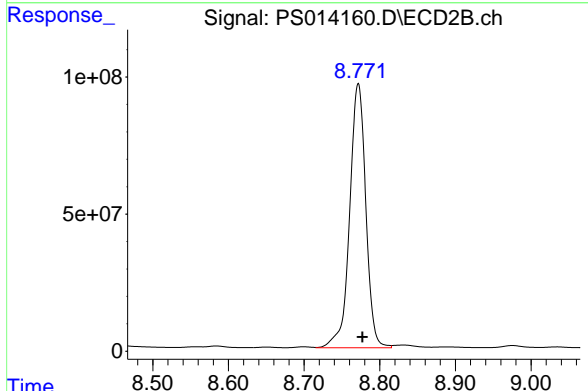
#10 Pentachlorophenol

R.T.: 8.412 min
 Delta R.T.: -0.001 min
 Response: 3268263993
 Conc: 595.49 ng/ml

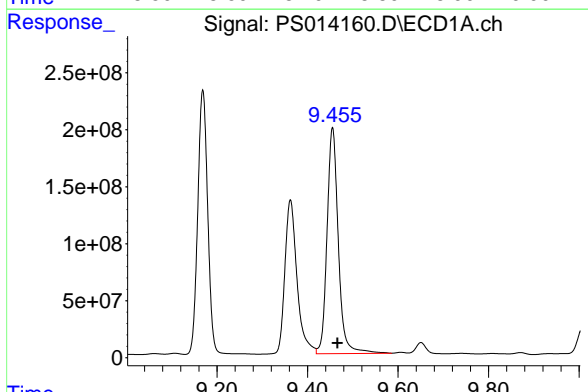


#11 2,4,5-TP (SILVEX)
 R.T.: 9.169 min
 Delta R.T.: -0.004 min
 Response: 3538993066
 Conc: 619.75 ng/ml

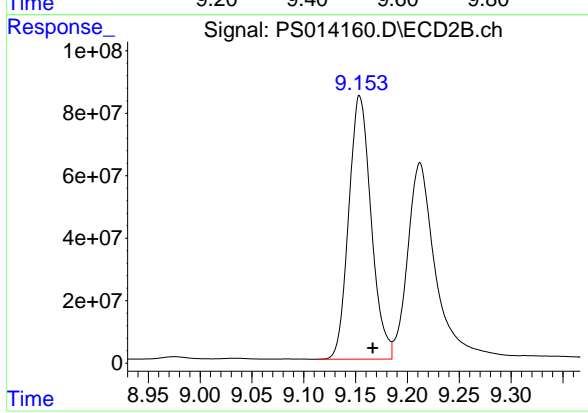
Instrument :
 ECD_S
 ClientSampleId :
 PB134956BS



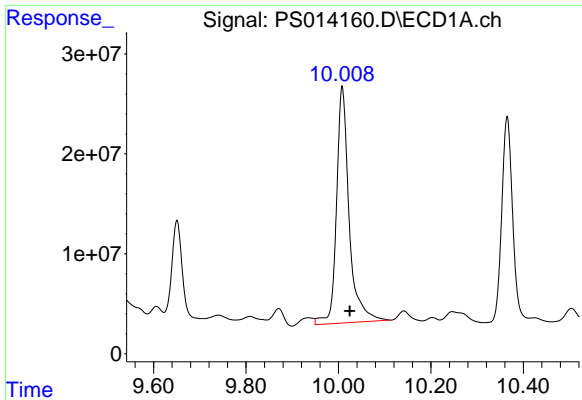
#11 2,4,5-TP (SILVEX)
 R.T.: 8.772 min
 Delta R.T.: -0.005 min
 Response: 1427655104
 Conc: 643.22 ng/ml



#12 2,4,5-T
 R.T.: 9.455 min
 Delta R.T.: -0.011 min
 Response: 3428670176
 Conc: 572.01 ng/ml

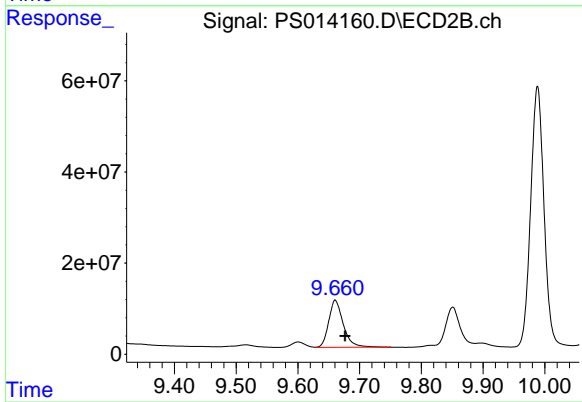


#12 2,4,5-T
 R.T.: 9.154 min
 Delta R.T.: -0.012 min
 Response: 1269440414
 Conc: 586.33 ng/ml

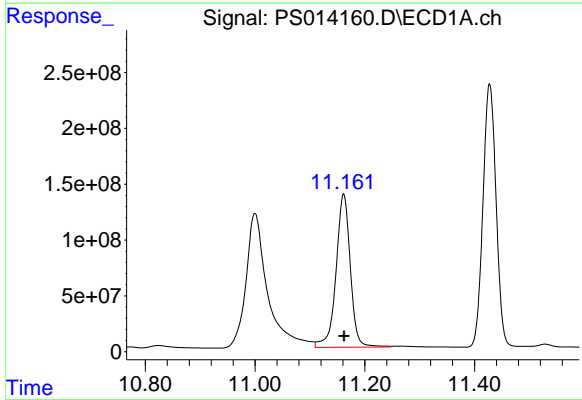


#13 2,4-DB
 R.T.: 10.008 min
 Delta R.T.: -0.016 min
 Response: 449309984
 Conc: 424.82 ng/ml

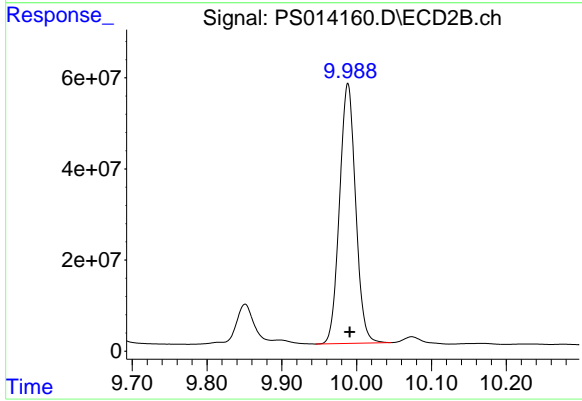
Instrument :
 ECD_S
 ClientSampleId :
 PB134956BS



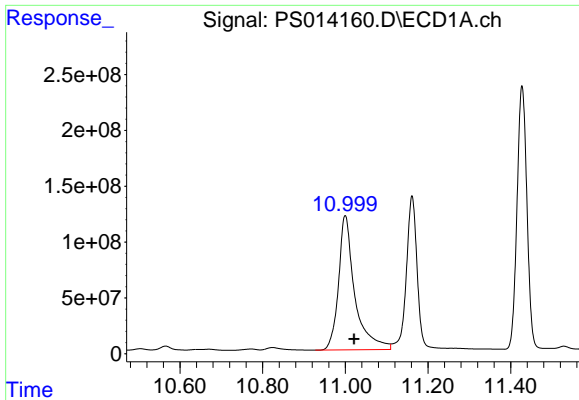
#13 2,4-DB
 R.T.: 9.661 min
 Delta R.T.: -0.016 min
 Response: 169506665
 Conc: 591.60 ng/ml



#14 DINOSEB
 R.T.: 11.161 min
 Delta R.T.: 0.000 min
 Response: 2486670634
 Conc: 537.61 ng/ml



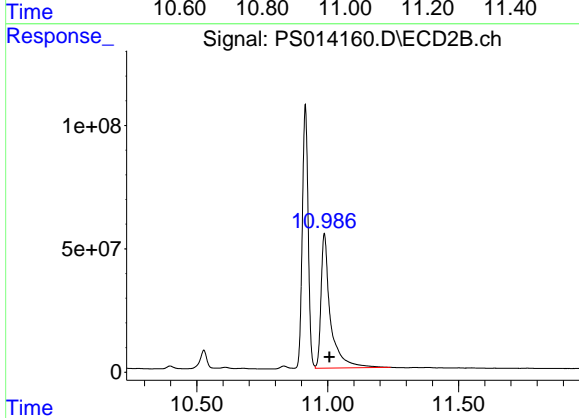
#14 DINOSEB
 R.T.: 9.988 min
 Delta R.T.: -0.003 min
 Response: 850807324
 Conc: 540.52 ng/ml



#15 Picloram

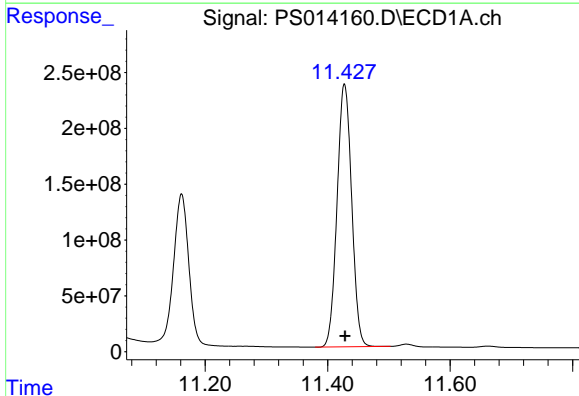
R.T.: 11.000 min
Delta R.T.: -0.021 min
Response: 3297471138
Conc: 413.12 ng/ml

Instrument :
ECD_S
ClientSampleId :
PB134956BS



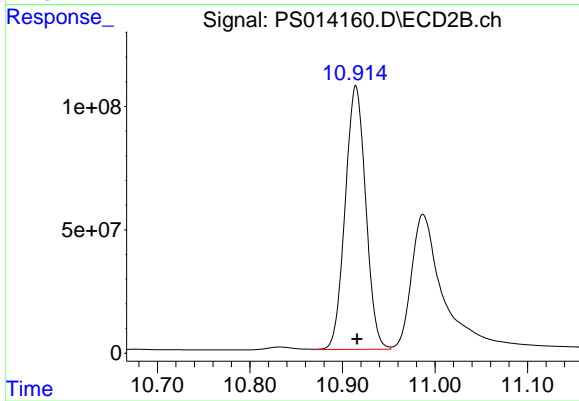
#15 Picloram

R.T.: 10.987 min
Delta R.T.: -0.020 min
Response: 1368134086
Conc: 414.43 ng/ml



#16 DCPA

R.T.: 11.428 min
Delta R.T.: 0.000 min
Response: 3889889231
Conc: 454.68 ng/ml



#16 DCPA

R.T.: 10.914 min
Delta R.T.: -0.001 min
Response: 1650006548
Conc: 491.56 ng/ml