

Data Path : Z:\pestpcbsrv\HPCHEM1\ECD_S\Data\PS030521\
 Data File : PS014164.D
 Signal(s) : Signal #1: ECD1A.ch Signal #2: ECD2B.ch
 Acq On : 05 Mar 2021 20:04
 Operator : DD\AJ
 Sample : HSTDCCC750
 Misc :
 ALS Vial : 10 Sample Multiplier: 1

Instrument :
 ECD_S
 ClientSampleId :

Integration File signal 1: autoint1.e
 Integration File signal 2: autoint2.e
 Quant Time: Mar 06 04:29:49 2021
 Quant Method : Z:\pestpcbsrv\HPCHEM1\ECD_S\Method\PS030521.M
 Quant Title : 8080.M
 QLast Update : Sat Mar 06 03:17:26 2021
 Response via : Initial Calibration
 Integrator: ChemStation

Volume Inj. : 2 µl
 Signal #1 Phase : Rtx-CLPesticides Signal #2 Phase: Rtx-CLPesticides2
 Signal #1 Info : 30M x 0.32mm x0.5 Signal #2 Info : 30M x 0.32mm x 0.25µm

	Compound	RT#1	RT#2	Resp#1	Resp#2	ng/ml	ng/ml

System Monitoring Compounds							
4) S	2,4-DCAA	7.203	6.900	799.9E6	298.0E6	794.398	783.342
Target Compounds							
1) T	Dalapon	3.027	2.619	820.3E6	360.9E6	698.785	684.587
2) T	3,5-DICHL...	6.421	6.057	1010.6E6	421.1E6	730.753	731.565
3) T	4-Nitroph...	7.038	6.516	361.9E6	171.3E6	696.664	698.415
5) T	DICAMBA	7.392	7.066	3000.3E6	1208.6E6	750.996	747.530
6) T	MCP P	7.560	7.160	224.4E6	98883213	76.056	74.602
7) T	MCPA	7.709	7.375	324.5E6	143.9E6	74.851	73.085
8) T	DICHLORPROP	8.083	7.691	727.4E6	302.2E6	744.971	738.515
9) T	2,4-D	8.316	7.989	812.9E6	359.7E6	751.886	745.209
10) T	Pentachlo...	8.621	8.412	11132.3E6	4140.4E6	758.580	754.401
11) T	2,4,5-TP ...	9.170	8.773	4340.2E6	1684.4E6	760.050	758.896
12) T	2,4,5-T	9.457	9.155	4544.6E6	1657.9E6	758.180	765.740
13) T	2,4-DB	10.010	9.662	782.7E6	217.4E6	740.044	758.921
14) T	DINOSEB	11.161	9.988	3423.3E6	1167.1E6	740.112	741.445
15) T	Picloram	10.998	10.985	6077.1E6	2459.2E6	761.364	744.949
16) T	DCPA	11.427	10.915	6466.3E6	2553.2E6	755.833	760.640

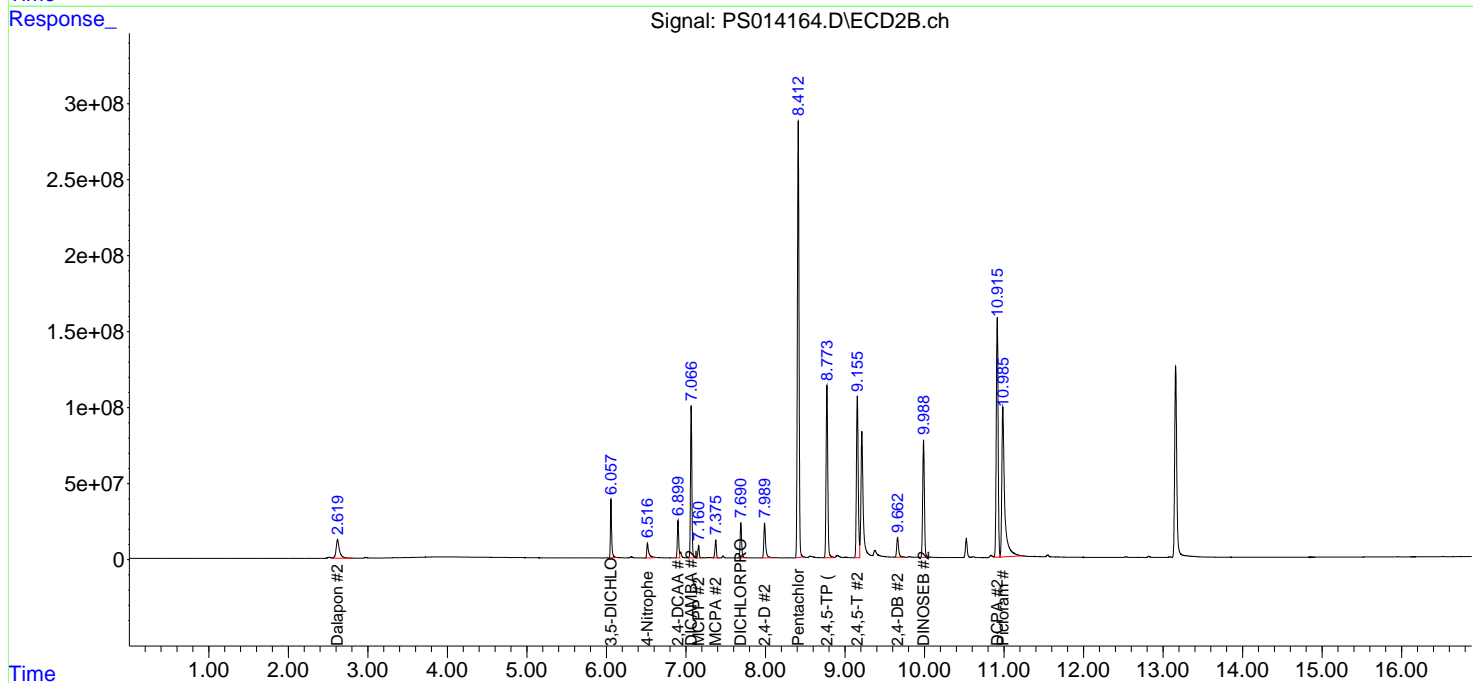
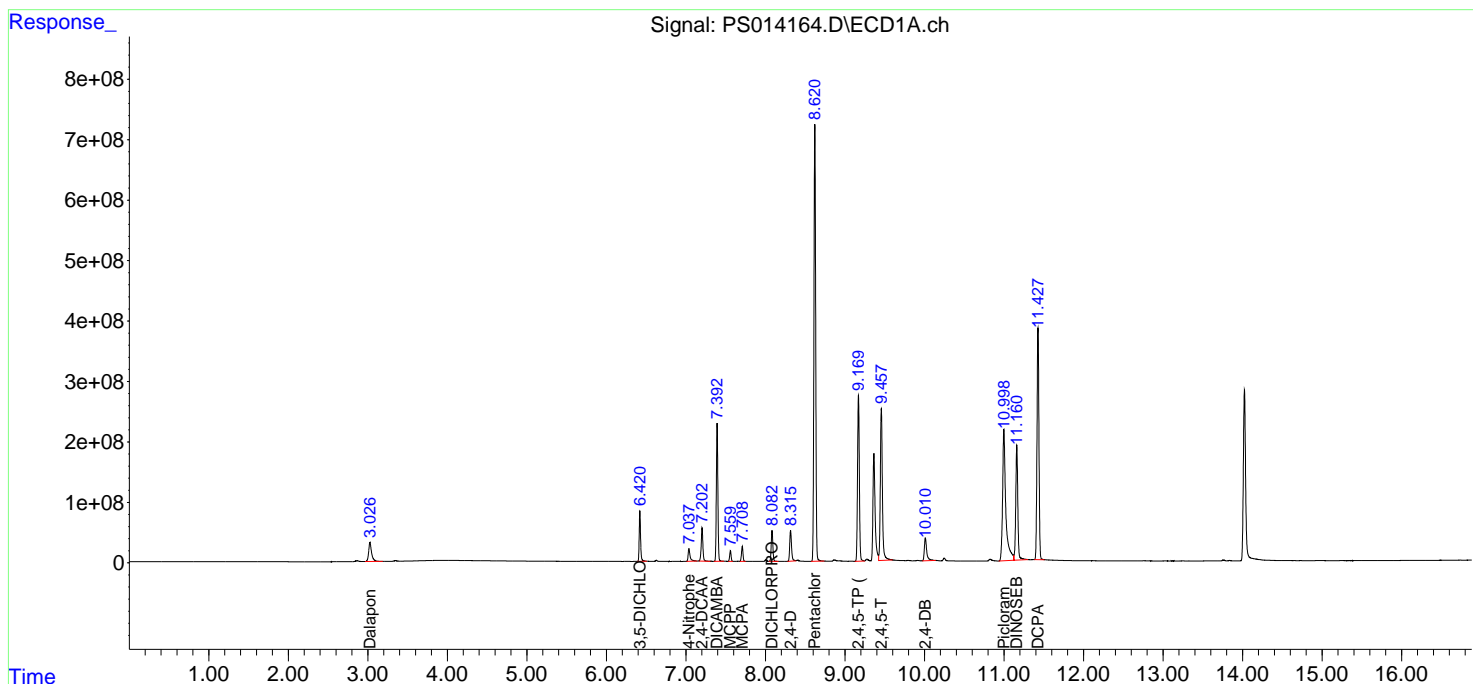
(f)=RT Delta > 1/2 Window (#)=Amounts differ by > 25% (m)=manual int.

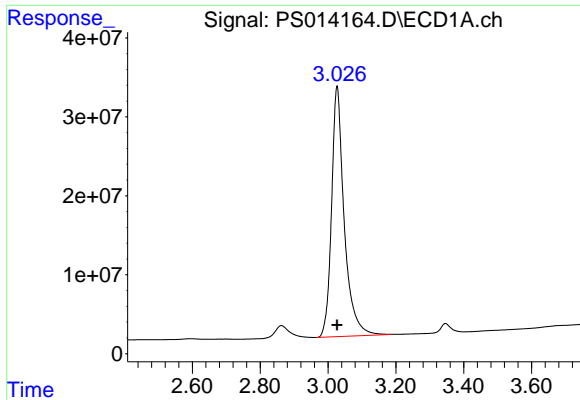
Data Path : Z:\pestpcbsrv\HPCHEM1\ECD_S\Data\PS030521\
 Data File : PS014164.D
 Signal(s) : Signal #1: ECD1A.ch Signal #2: ECD2B.ch
 Acq On : 05 Mar 2021 20:04
 Operator : DD\AJ
 Sample : HSTDCCC750
 Misc :
 ALS Vial : 10 Sample Multiplier: 1

Instrument :
 ECD_S
 ClientSampled :

Integration File signal 1: autoint1.e
 Integration File signal 2: autoint2.e
 Quant Time: Mar 06 04:29:49 2021
 Quant Method : Z:\pestpcbsrv\HPCHEM1\ECD_S\Method\PS030521.M
 Quant Title : 8080.M
 QLast Update : Sat Mar 06 03:17:26 2021
 Response via : Initial Calibration
 Integrator: ChemStation

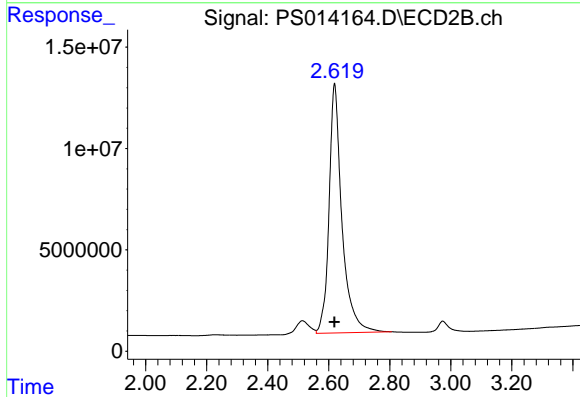
Volume Inj. : 2 µl
 Signal #1 Phase : Rtx-CLPesticides Signal #2 Phase: Rtx-CLPesticides2
 Signal #1 Info : 30M x 0.32mm x0.5 Signal #2 Info : 30M x 0.32mm x 0.25µm



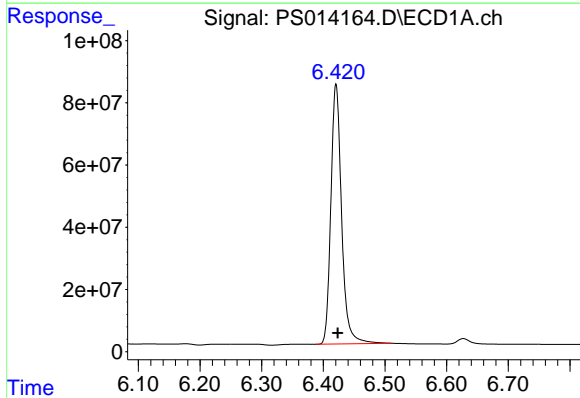


#1 Dalapon
R.T.: 3.027 min
Delta R.T.: 0.000 min
Response: 820302109
Conc: 698.79 ng/ml

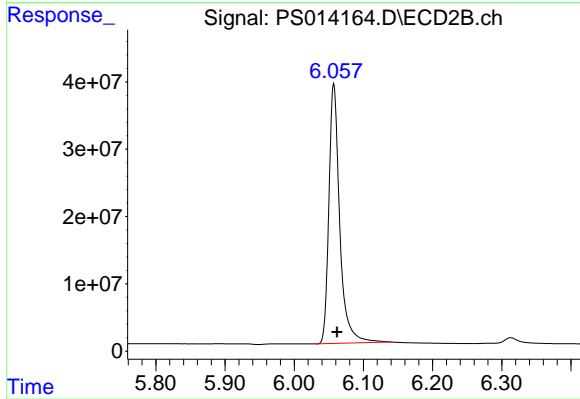
Instrument :
ECD_S
ClientSampleId :



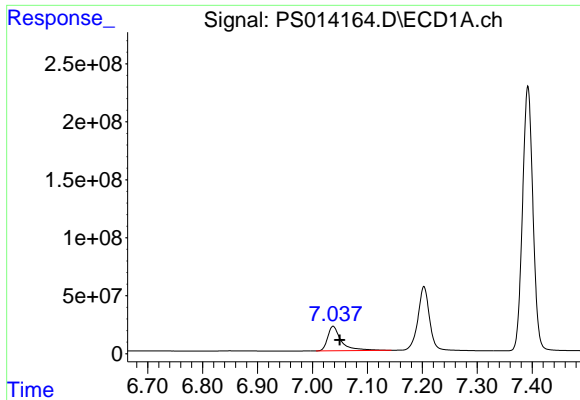
#1 Dalapon
R.T.: 2.619 min
Delta R.T.: 0.000 min
Response: 360864998
Conc: 684.59 ng/ml



#2 3,5-DICHLOROBENZOIC ACID
R.T.: 6.421 min
Delta R.T.: -0.003 min
Response: 1010559480
Conc: 730.75 ng/ml

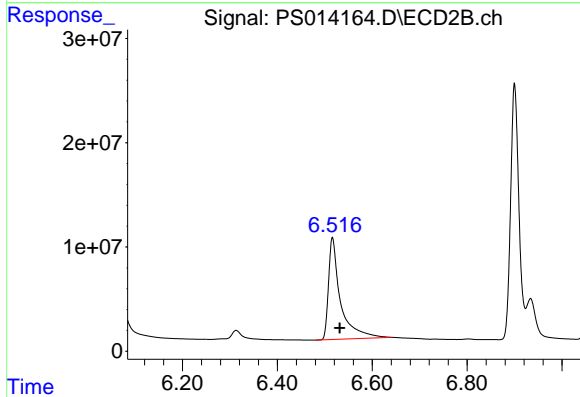


#2 3,5-DICHLOROBENZOIC ACID
R.T.: 6.057 min
Delta R.T.: -0.004 min
Response: 421128851
Conc: 731.56 ng/ml

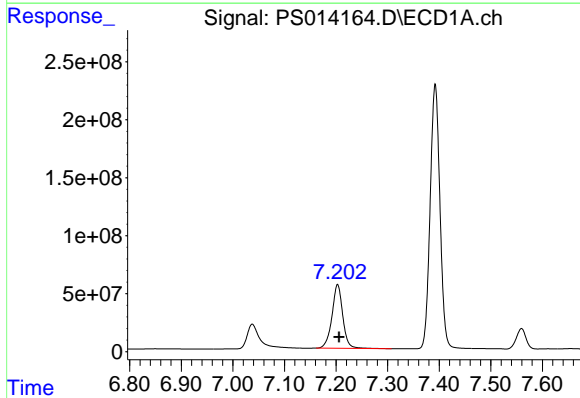


#3 4-Nitrophenol
 R.T.: 7.038 min
 Delta R.T.: -0.012 min
 Response: 361850453
 Conc: 696.66 ng/ml

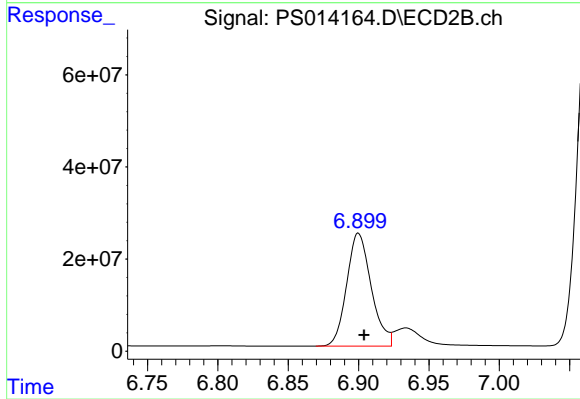
Instrument :
 ECD_S
 ClientSampleId :



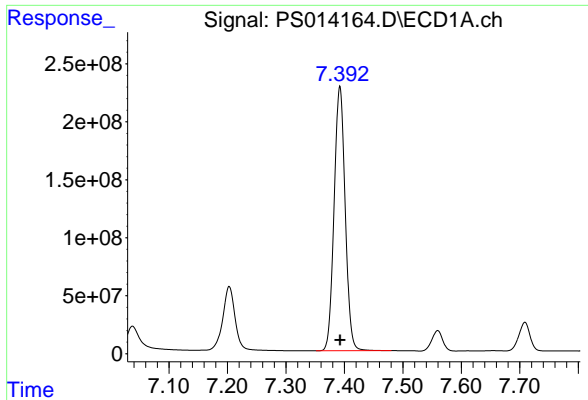
#3 4-Nitrophenol
 R.T.: 6.516 min
 Delta R.T.: -0.016 min
 Response: 171255677
 Conc: 698.42 ng/ml



#4 2,4-DCAA
 R.T.: 7.203 min
 Delta R.T.: -0.003 min
 Response: 799937923
 Conc: 794.40 ng/ml

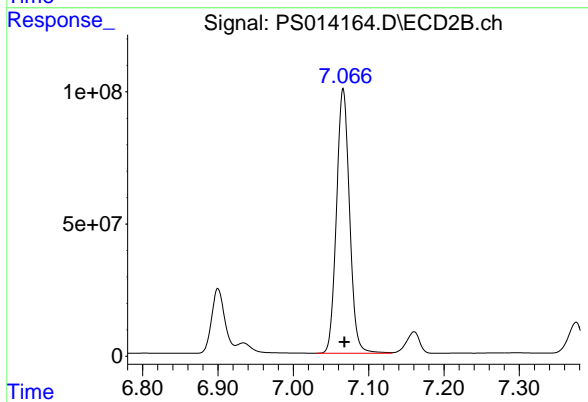


#4 2,4-DCAA
 R.T.: 6.900 min
 Delta R.T.: -0.004 min
 Response: 298020130
 Conc: 783.34 ng/ml

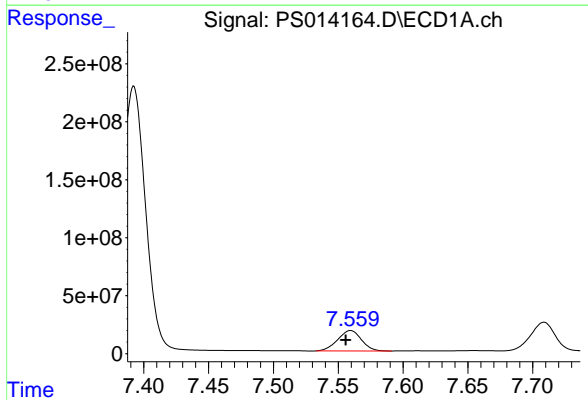


#5 DICAMBA
 R.T.: 7.392 min
 Delta R.T.: 0.000 min
 Response: 3000332707
 Conc: 751.00 ng/ml

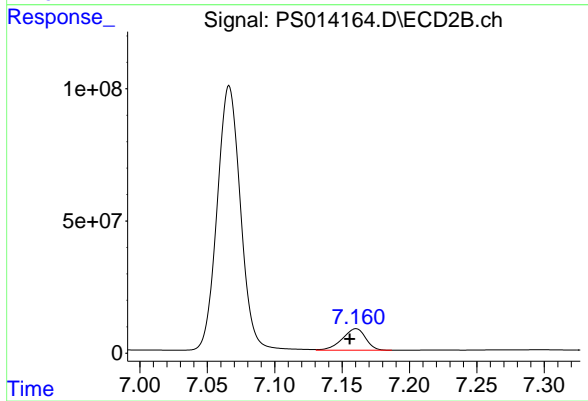
Instrument :
 ECD_S
 ClientSampleId :



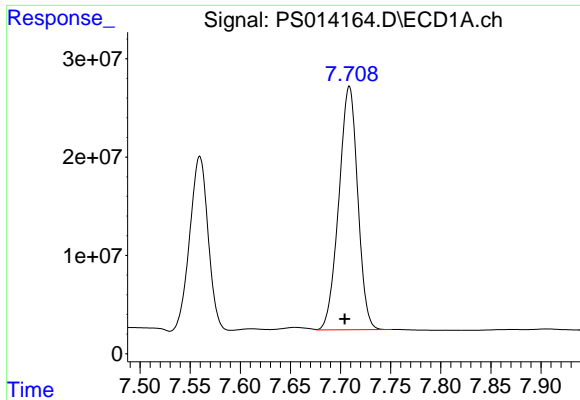
#5 DICAMBA
 R.T.: 7.066 min
 Delta R.T.: -0.001 min
 Response: 1208574352
 Conc: 747.53 ng/ml



#6 MCP
 R.T.: 7.560 min
 Delta R.T.: 0.004 min
 Response: 224364231
 Conc: 76.06 ug/ml

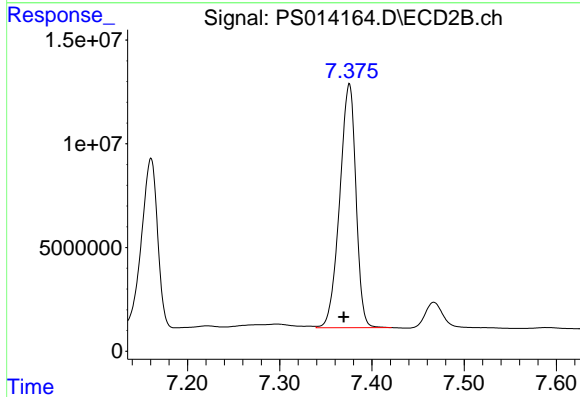


#6 MCP
 R.T.: 7.160 min
 Delta R.T.: 0.005 min
 Response: 98883213
 Conc: 74.60 ug/ml

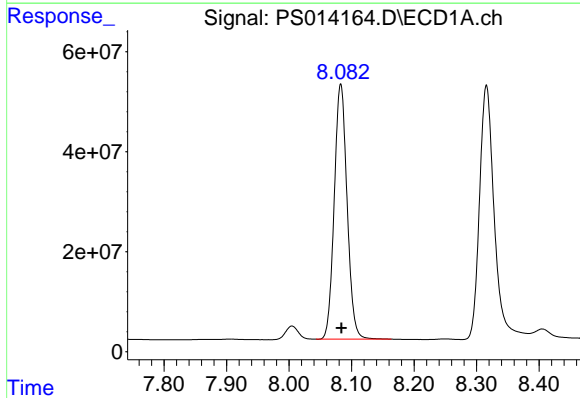


#7 MCPA
 R.T.: 7.709 min
 Delta R.T.: 0.005 min
 Response: 324458679
 Conc: 74.85 ug/ml

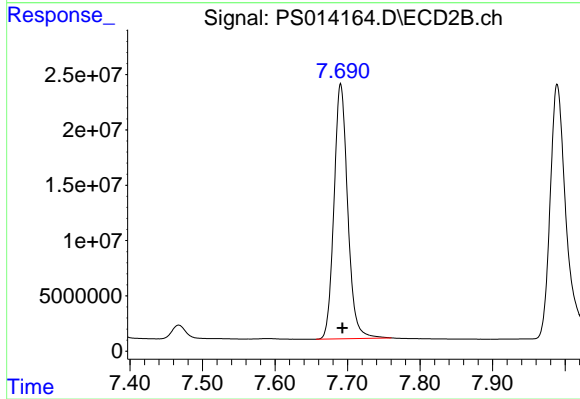
Instrument :
 ECD_S
 ClientSampleId :



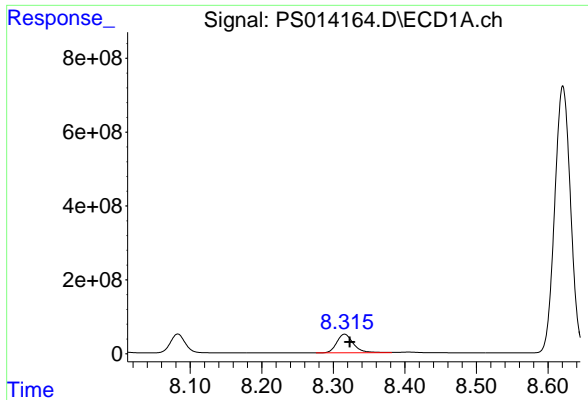
#7 MCPA
 R.T.: 7.375 min
 Delta R.T.: 0.006 min
 Response: 143902285
 Conc: 73.09 ug/ml



#8 DICHLORPROP
 R.T.: 8.083 min
 Delta R.T.: -0.001 min
 Response: 727373482
 Conc: 744.97 ng/ml



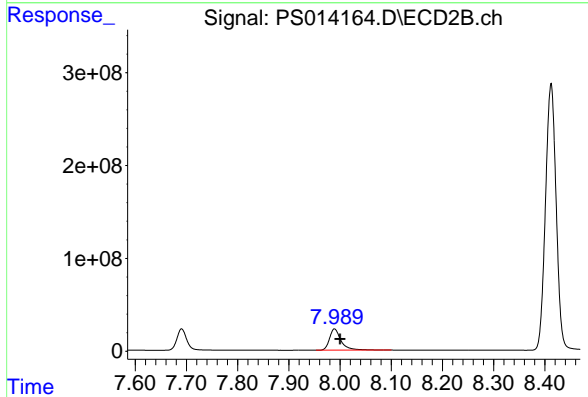
#8 DICHLORPROP
 R.T.: 7.691 min
 Delta R.T.: -0.002 min
 Response: 302168284
 Conc: 738.52 ng/ml



#9 2,4-D

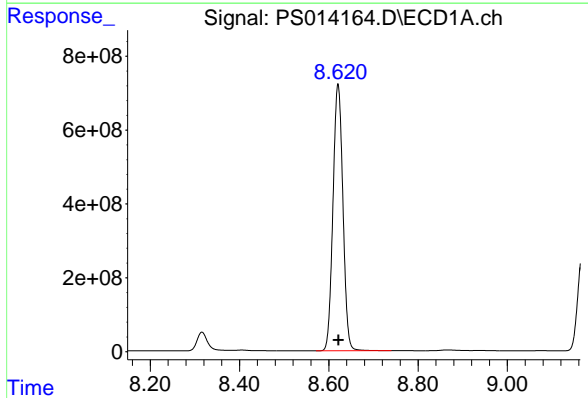
R.T.: 8.316 min
 Delta R.T.: -0.007 min
 Response: 812919489
 Conc: 751.89 ng/ml

Instrument :
 ECD_S
 ClientSampled :



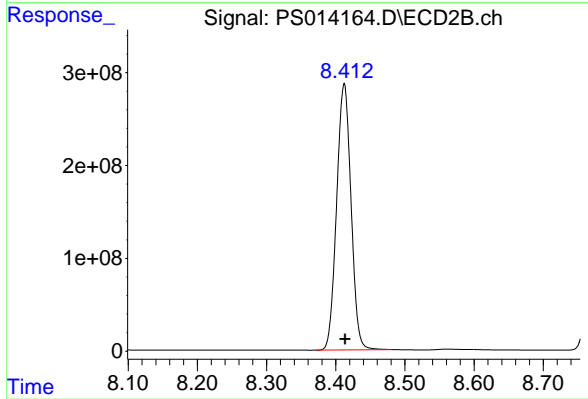
#9 2,4-D

R.T.: 7.989 min
 Delta R.T.: -0.011 min
 Response: 359682839
 Conc: 745.21 ng/ml



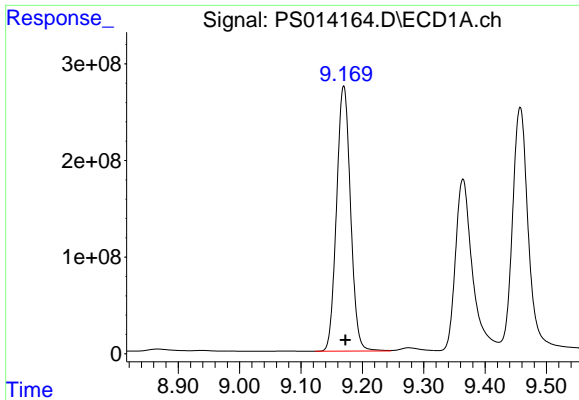
#10 Pentachlorophenol

R.T.: 8.621 min
 Delta R.T.: -0.001 min
 Response: 11132337361
 Conc: 758.58 ng/ml



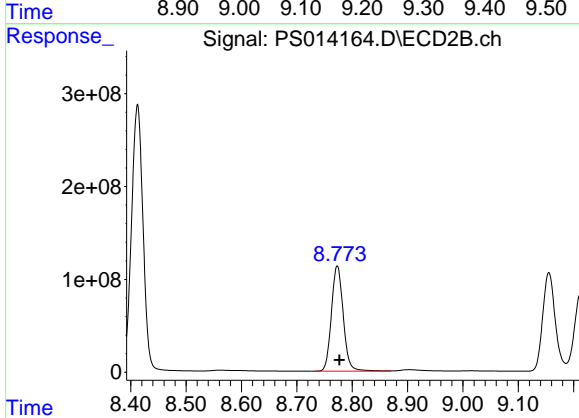
#10 Pentachlorophenol

R.T.: 8.412 min
 Delta R.T.: -0.001 min
 Response: 4140412835
 Conc: 754.40 ng/ml

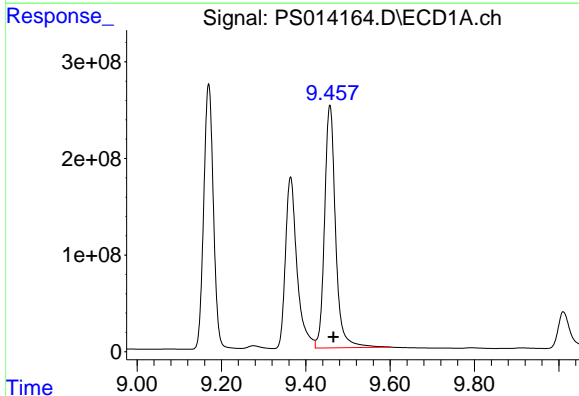


#11 2,4,5-TP (SILVEX)
 R.T.: 9.170 min
 Delta R.T.: -0.003 min
 Response: 4340151558
 Conc: 760.05 ng/ml

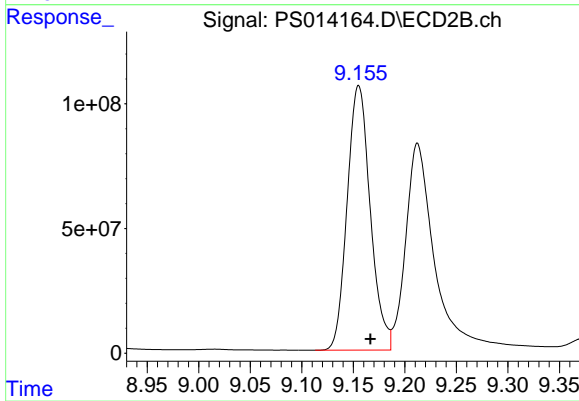
Instrument :
 ECD_S
 ClientSampled :



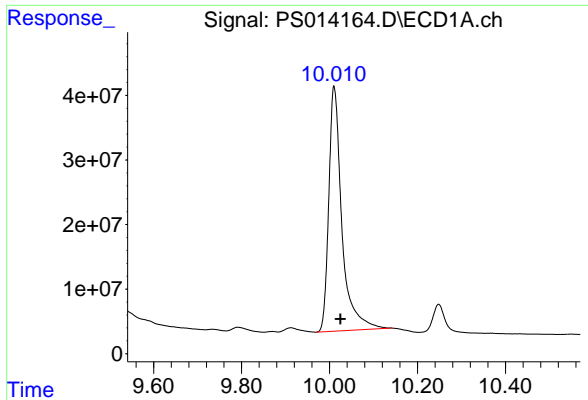
#11 2,4,5-TP (SILVEX)
 R.T.: 8.773 min
 Delta R.T.: -0.004 min
 Response: 1684416046
 Conc: 758.90 ng/ml



#12 2,4,5-T
 R.T.: 9.457 min
 Delta R.T.: -0.009 min
 Response: 4544594719
 Conc: 758.18 ng/ml

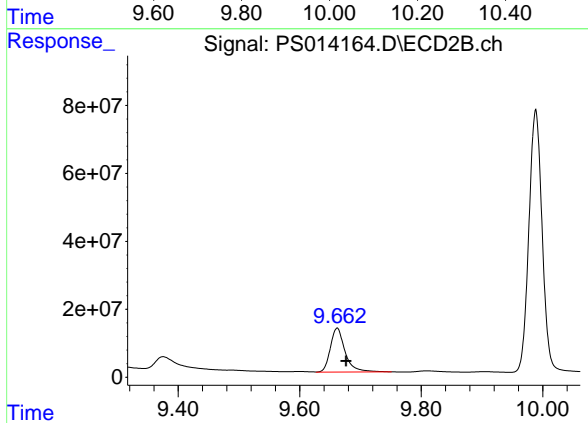


#12 2,4,5-T
 R.T.: 9.155 min
 Delta R.T.: -0.011 min
 Response: 1657883528
 Conc: 765.74 ng/ml

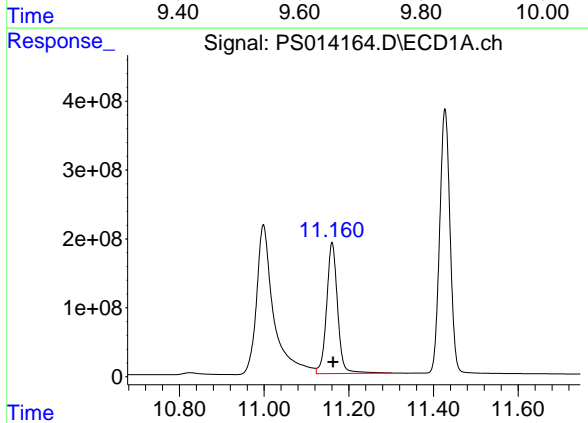


#13 2,4-DB
 R.T.: 10.010 min
 Delta R.T.: -0.014 min
 Response: 782710581
 Conc: 740.04 ng/ml

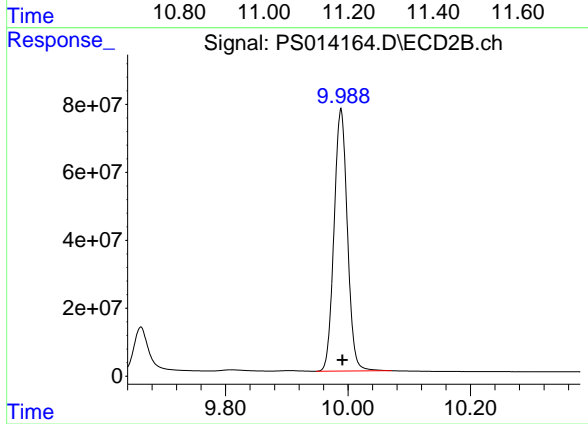
Instrument :
 ECD_S
 ClientSampled :



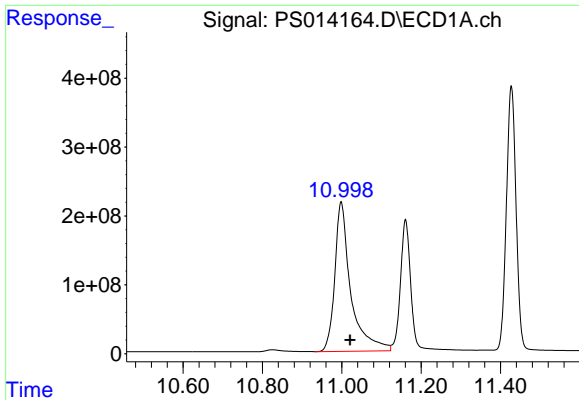
#13 2,4-DB
 R.T.: 9.662 min
 Delta R.T.: -0.015 min
 Response: 217448153
 Conc: 758.92 ng/ml



#14 DINOSEB
 R.T.: 11.161 min
 Delta R.T.: -0.002 min
 Response: 3423315205
 Conc: 740.11 ng/ml

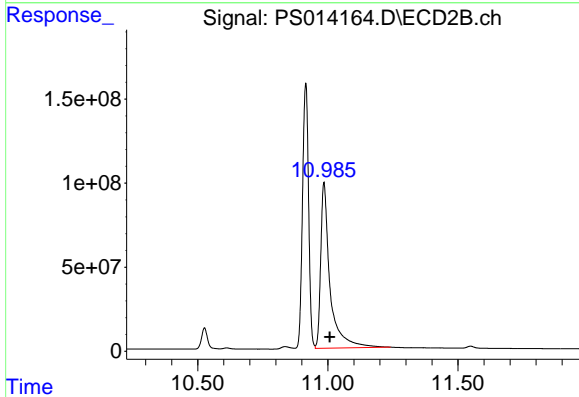


#14 DINOSEB
 R.T.: 9.988 min
 Delta R.T.: -0.002 min
 Response: 1167074597
 Conc: 741.44 ng/ml

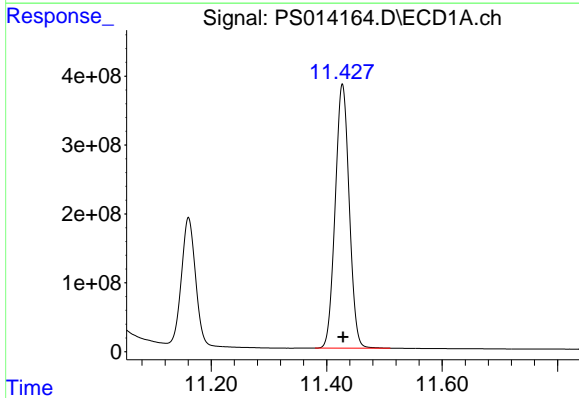


#15 Picloram
 R.T.: 10.998 min
 Delta R.T.: -0.023 min
 Response: 6077135677
 Conc: 761.36 ng/ml

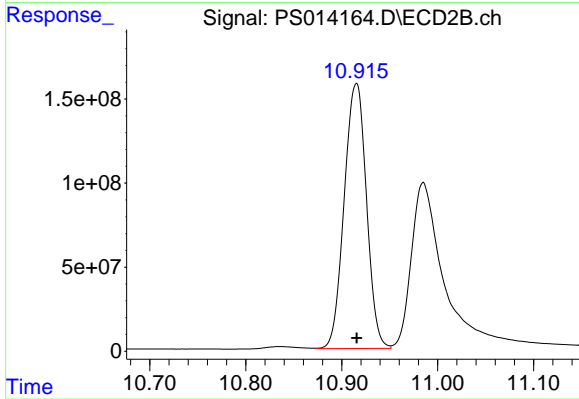
Instrument :
 ECD_S
 ClientSampled :



#15 Picloram
 R.T.: 10.985 min
 Delta R.T.: -0.022 min
 Response: 2459249727
 Conc: 744.95 ng/ml



#16 DCPA
 R.T.: 11.427 min
 Delta R.T.: -0.001 min
 Response: 6466304476
 Conc: 755.83 ng/ml



#16 DCPA
 R.T.: 10.915 min
 Delta R.T.: 0.000 min
 Response: 2553245068
 Conc: 760.64 ng/ml