

Data Path : Z:\pestpcbsrv\HPCHEM1\ECD\_S\Data\PS030521\  
 Data File : PS014173.D  
 Signal(s) : Signal #1: ECD1A.ch Signal #2: ECD2B.ch  
 Acq On : 05 Mar 2021 23:31  
 Operator : DD\AJ  
 Sample : I.BLK  
 Misc :  
 ALS Vial : 9 Sample Multiplier: 1

Instrument :  
 ECD\_S  
 ClientSampleId :  
 I.BLK

Integration File signal 1: autoint1.e  
 Integration File signal 2: autoint2.e  
 Quant Time: Mar 06 00:38:41 2021  
 Quant Method : Z:\pestpcbsrv\HPCHEM1\ECD\_S\Method\PS030521.M  
 Quant Title : 8080.M  
 QLast Update : Fri Mar 05 11:52:31 2021  
 Response via : Initial Calibration  
 Integrator: ChemStation

Volume Inj. : 2 µl  
 Signal #1 Phase : Rtx-CLPesticides Signal #2 Phase: Rtx-CLPesticides2  
 Signal #1 Info : 30M x 0.32mm x0.5 Signal #2 Info : 30M x 0.32mm x 0.25µm

Compound	RT#1	RT#2	Resp#1	Resp#2	ng/ml	ng/ml
-----						
System Monitoring Compounds						
4) S 2,4-DCAA	7.207	6.905	449.5E6	204.5E6	446.348	537.459
Target Compounds						
6) T MCPP	0.000	7.138	0	1701911	N.D.	1.284
-----						

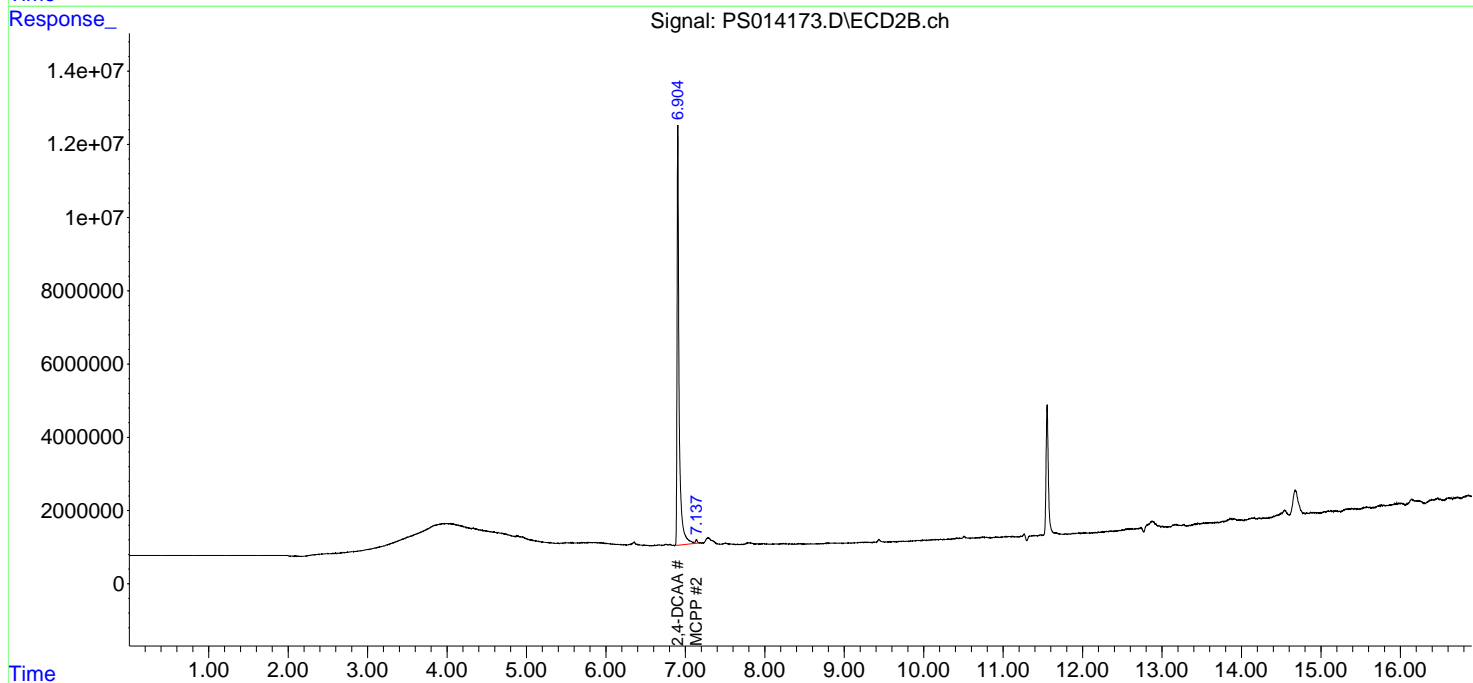
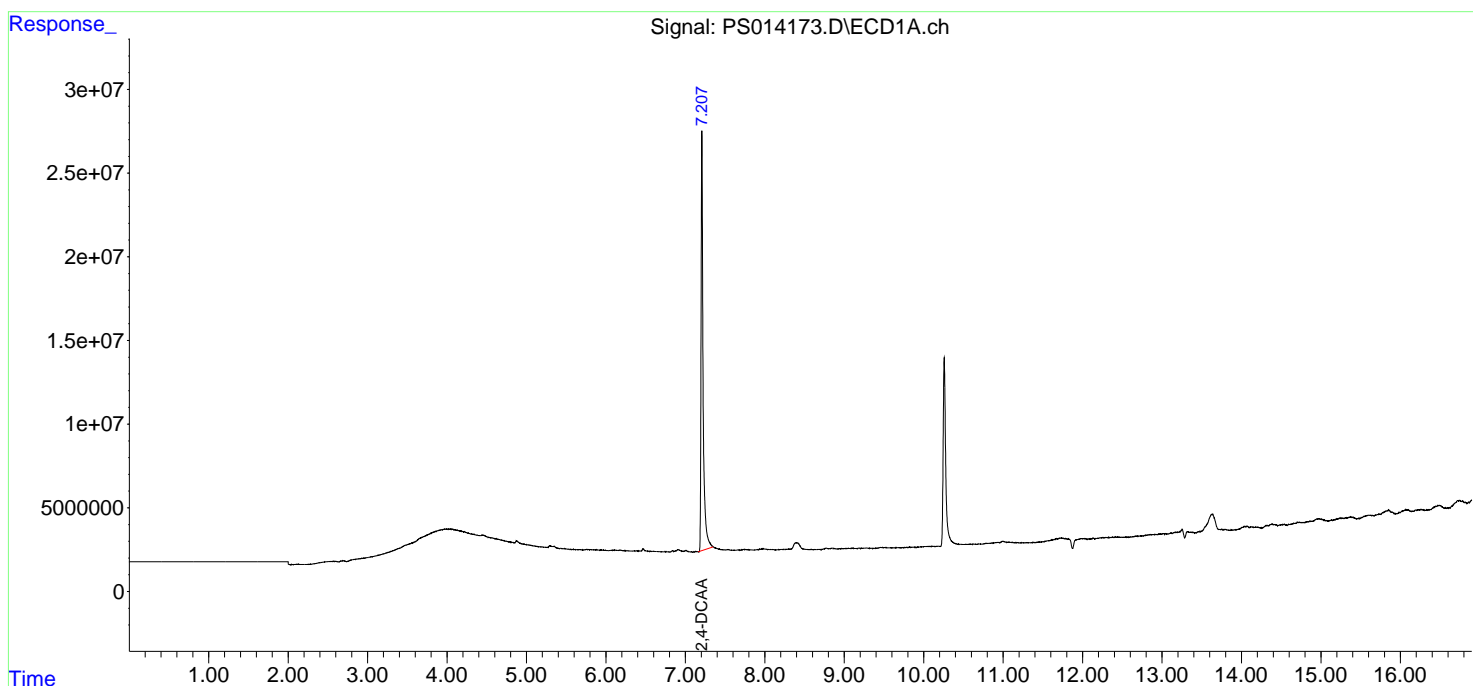
(f)=RT Delta > 1/2 Window (#)=Amounts differ by > 25% (m)=manual int.

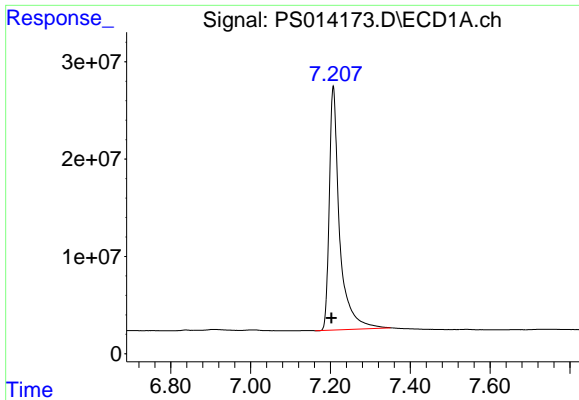
Data Path : Z:\pestpcbsrv\HPCHEM1\ECD\_S\Data\PS030521\  
 Data File : PS014173.D  
 Signal(s) : Signal #1: ECD1A.ch Signal #2: ECD2B.ch  
 Acq On : 05 Mar 2021 23:31  
 Operator : DD\AJ  
 Sample : I.BLK  
 Misc :  
 ALS Vial : 9 Sample Multiplier: 1

Instrument :  
 ECD\_S  
 ClientSampleId :  
 I.BLK

Integration File signal 1: autoint1.e  
 Integration File signal 2: autoint2.e  
 Quant Time: Mar 06 00:38:41 2021  
 Quant Method : Z:\pestpcbsrv\HPCHEM1\ECD\_S\Method\PS030521.M  
 Quant Title : 8080.M  
 QLast Update : Fri Mar 05 11:52:31 2021  
 Response via : Initial Calibration  
 Integrator: ChemStation

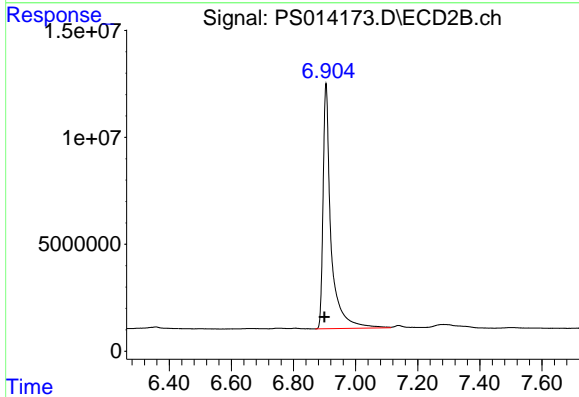
Volume Inj. : 2 µl  
 Signal #1 Phase : Rtx-CLPesticides Signal #2 Phase: Rtx-CLPesticides2  
 Signal #1 Info : 30M x 0.32mm x 0.5 Signal #2 Info : 30M x 0.32mm x 0.25µm



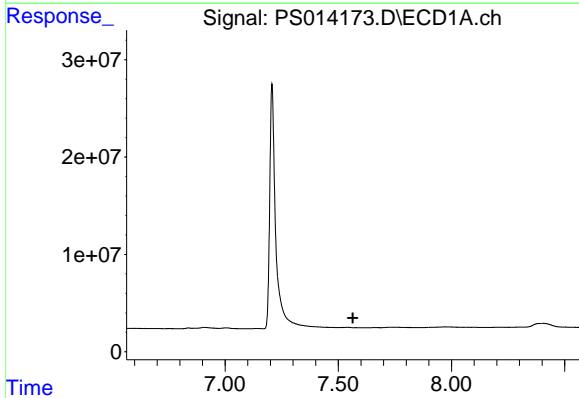


#4 2,4-DCAA  
 R.T.: 7.207 min  
 Delta R.T.: 0.005 min  
 Response: 449461100  
 Conc: 446.35 ng/ml

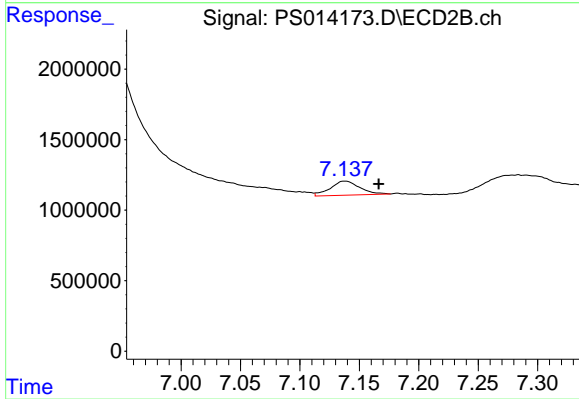
Instrument :  
 ECD\_S  
 ClientSampleId :  
 I.BLK



#4 2,4-DCAA  
 R.T.: 6.905 min  
 Delta R.T.: 0.005 min  
 Response: 204474778  
 Conc: 537.46 ng/ml



#6 MCPP  
 R.T.: 0.000 min  
 Exp R.T. : 7.565 min  
 Response: 0  
 Conc: N.D.



#6 MCPP  
 R.T.: 7.138 min  
 Delta R.T.: -0.029 min  
 Response: 1701911  
 Conc: 1.28 ug/ml