

Data Path : Z:\pestpcbsrv\HPCHEM1\ECD\_S\Data\PS030525\  
 Data File : PS029354.D  
 Signal(s) : Signal #1: ECD1A.ch Signal #2: ECD2B.ch  
 Acq On : 05 Mar 2025 18:04  
 Operator : AR\AJ  
 Sample : PB166979BSD  
 Misc :  
 ALS Vial : 6 Sample Multiplier: 1

Instrument :  
 ECD\_S  
 ClientSampleId :  
 PB166979BSD

Integration File signal 1: autoint1.e  
 Integration File signal 2: autoint2.e  
 Quant Time: Mar 06 03:43:03 2025  
 Quant Method : Z:\pestpcbsrv\HPCHEM1\ECD\_S\Method\PS022125.M  
 Quant Title : 8080.M  
 QLast Update : Sat Feb 22 01:02:20 2025  
 Response via : Initial Calibration  
 Integrator: ChemStation

Volume Inj. : 1 µl  
 Signal #1 Phase : ZB-MR1 Signal #2 Phase: ZB-MR2  
 Signal #1 Info : 30M x 0.32mm x0.5 Signal #2 Info : 30M x 0.32mm x 0.25µm

Compound	RT#1	RT#2	Resp#1	Resp#2	ng/ml	ng/ml
-----						
System Monitoring Compounds						
4) S 2,4-DCAA	7.160	7.626	2278.3E6	471.7E6	552.915	501.584
Target Compounds						
1) T Dalapon	2.601	2.646	2825.4E6	1028.1E6	511.812	485.635
2) T 3,5-DICHL...	6.342	6.600	3018.6E6	661.3E6	515.898	467.010
3) T 4-Nitroph...	6.960	7.158	1061.2E6	353.1E6	453.470	442.726
5) T DICAMBA	7.341	7.820	9154.2E6	2449.5E6	527.132	475.348
6) T MCPP	7.521	7.924	615.1E6	109.9E6	49.901	46.984
7) T MCPA	7.668	8.163	835.0E6	150.0E6	49.276	47.030
8) T DICHLORPROP	8.041	8.529	2383.4E6	619.0E6	518.524	484.089
9) T 2,4-D	8.271	8.855	2473.5E6	616.5E6	520.686	485.442
10) T Pentachlo...	8.563	9.372	34700.4E6	11588.0E6	594.631	503.549
11) T 2,4,5-TP ...	9.137	9.749	13319.0E6	4493.6E6	541.710	497.266
12) T 2,4,5-T	9.428	10.164	13780.3E6	4042.1E6	540.644	492.319
13) T 2,4-DB	9.998	10.727	2134.6E6	337.4E6	511.236	440.734
14) T DINOSEB	11.192	11.101	8779.5E6	2888.9E6	527.907m	476.597m
15) T Picloram	11.007	12.176	15317.2E6	5192.8E6	501.487	449.112
16) T DCPA	11.488	12.135	16341.6E6	5832.9E6	544.657	492.787

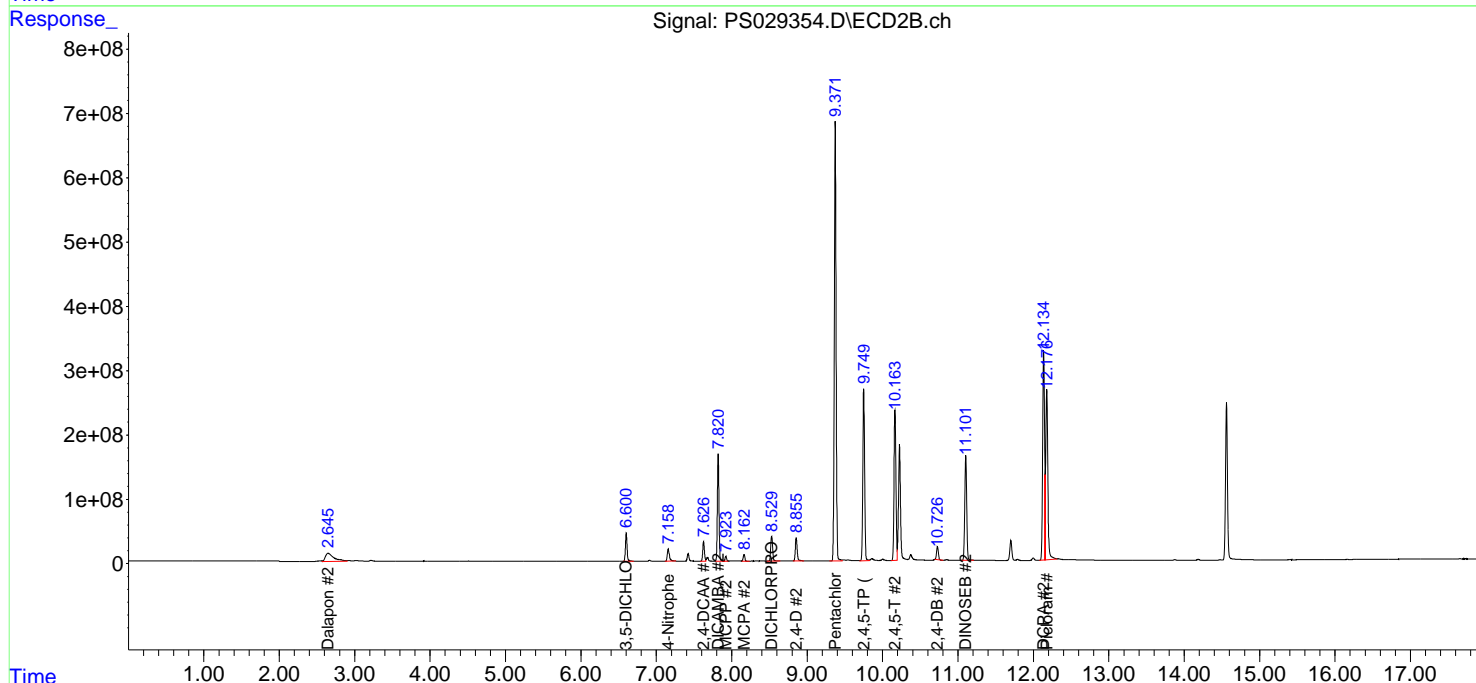
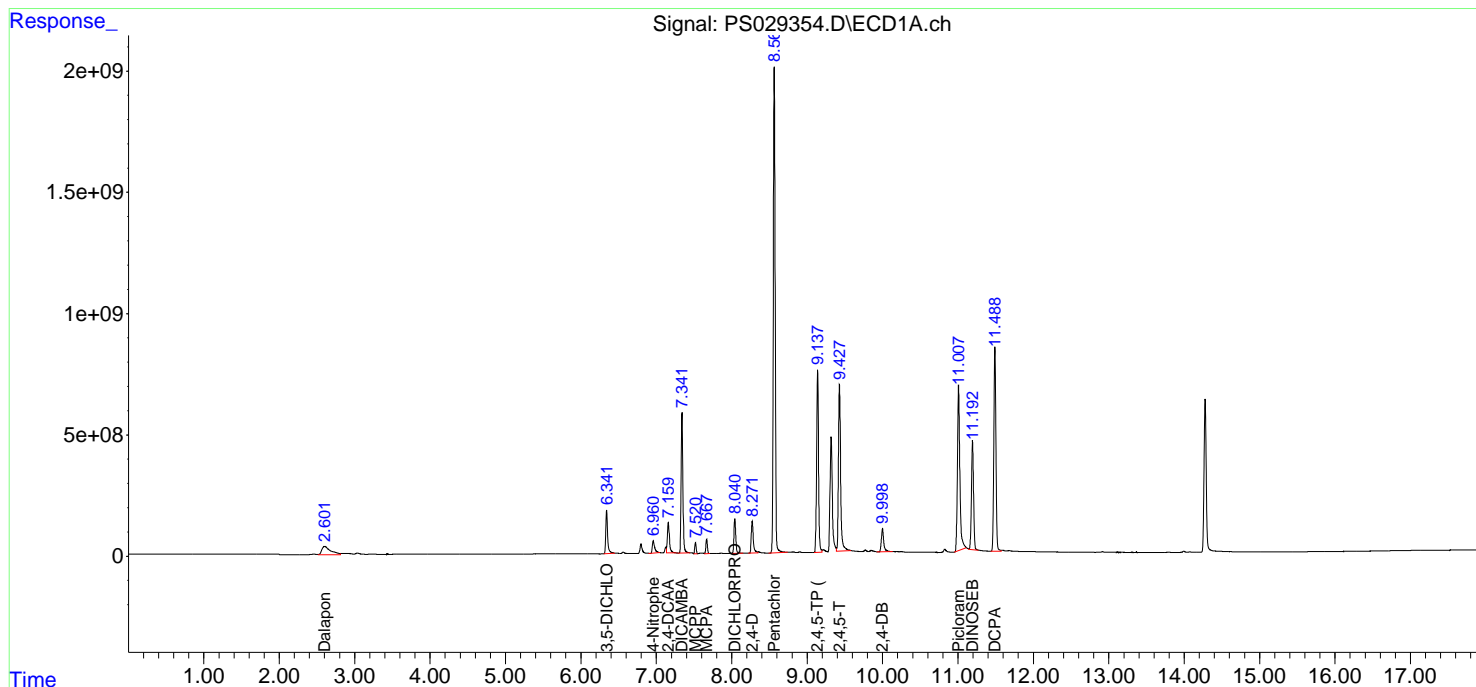
(f)=RT Delta > 1/2 Window (#)=Amounts differ by > 25% (m)=manual int.

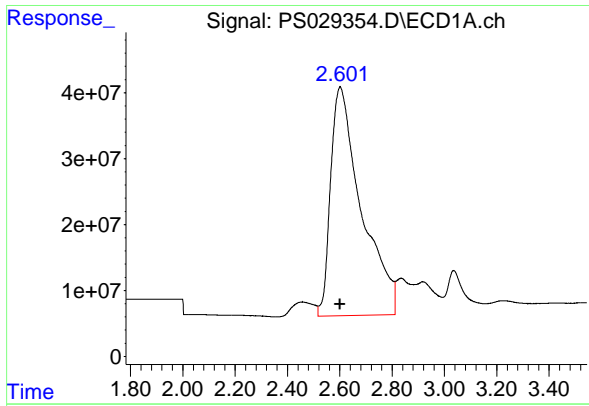
Data Path : Z:\pestpcbsrv\HPCHEM1\ECD\_S\Data\PS030525\  
 Data File : PS029354.D  
 Signal(s) : Signal #1: ECD1A.ch Signal #2: ECD2B.ch  
 Acq On : 05 Mar 2025 18:04  
 Operator : AR\AJ  
 Sample : PB166979BSD  
 Misc :  
 ALS Vial : 6 Sample Multiplier: 1

Instrument :  
 ECD\_S  
 ClientSampleId :  
 PB166979BSD

Integration File signal 1: autoint1.e  
 Integration File signal 2: autoint2.e  
 Quant Time: Mar 06 03:43:03 2025  
 Quant Method : Z:\pestpcbsrv\HPCHEM1\ECD\_S\Method\PS022125.M  
 Quant Title : 8080.M  
 QLast Update : Sat Feb 22 01:02:20 2025  
 Response via : Initial Calibration  
 Integrator: ChemStation

Volume Inj. : 1 µl  
 Signal #1 Phase : ZB-MR1 Signal #2 Phase: ZB-MR2  
 Signal #1 Info : 30M x 0.32mm x 0.5 Signal #2 Info : 30M x 0.32mm x 0.25µm

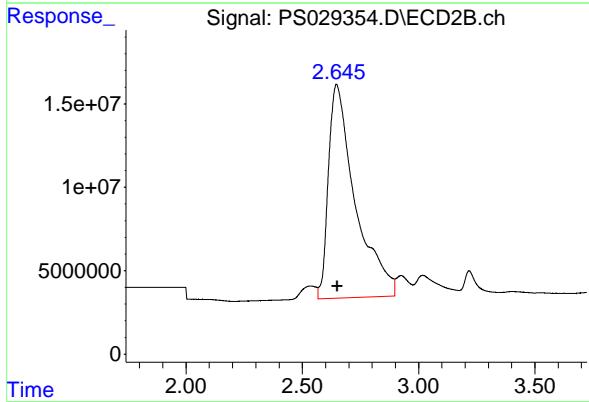




#1 Dalapon

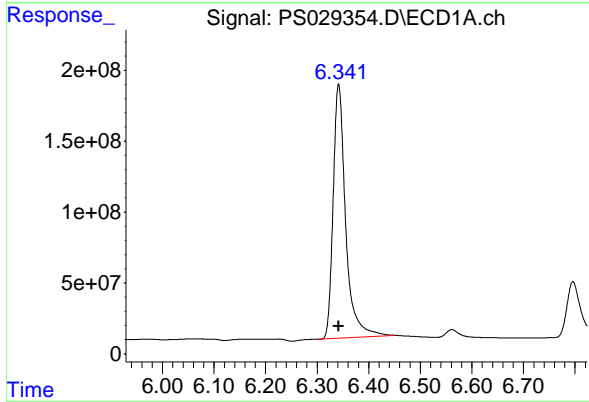
R.T.: 2.601 min  
 Delta R.T.: 0.001 min  
 Response: 2825350612  
 Conc: 511.81 ng/ml

Instrument :  
 ECD\_S  
 ClientSampleId :  
 PB166979BSD



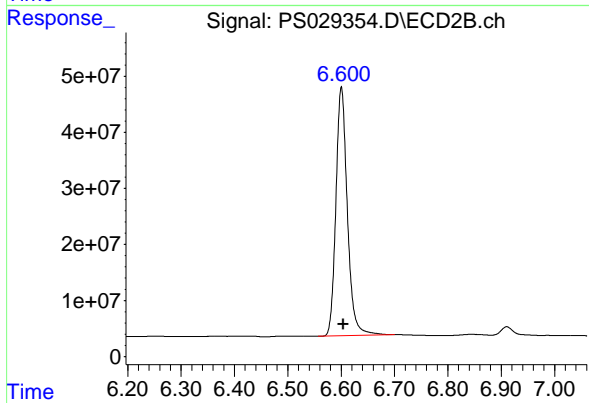
#1 Dalapon

R.T.: 2.646 min  
 Delta R.T.: -0.005 min  
 Response: 1028148453  
 Conc: 485.64 ng/ml



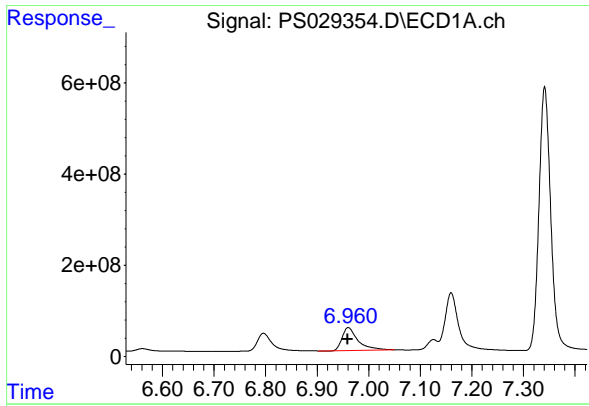
#2 3,5-DICHLOROBENZOIC ACID

R.T.: 6.342 min  
 Delta R.T.: 0.000 min  
 Response: 3018578853  
 Conc: 515.90 ng/ml



#2 3,5-DICHLOROBENZOIC ACID

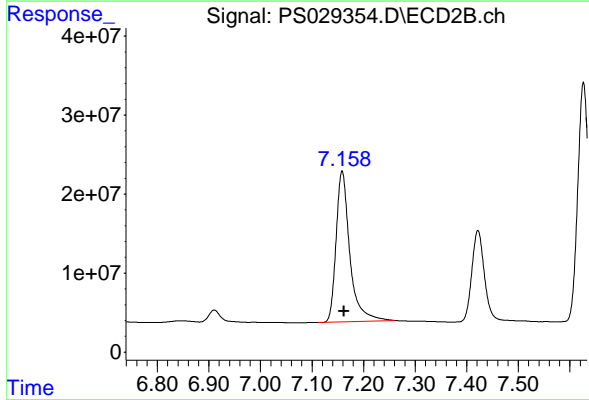
R.T.: 6.600 min  
 Delta R.T.: -0.004 min  
 Response: 661339566  
 Conc: 467.01 ng/ml



#3 4-Nitrophenol

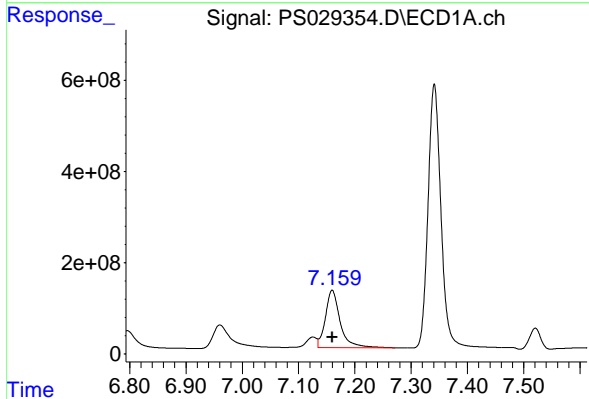
R.T.: 6.960 min  
 Delta R.T.: 0.002 min  
 Response: 1061203082  
 Conc: 453.47 ng/ml

Instrument :  
 ECD\_S  
 ClientSampleId :  
 PB166979BSD



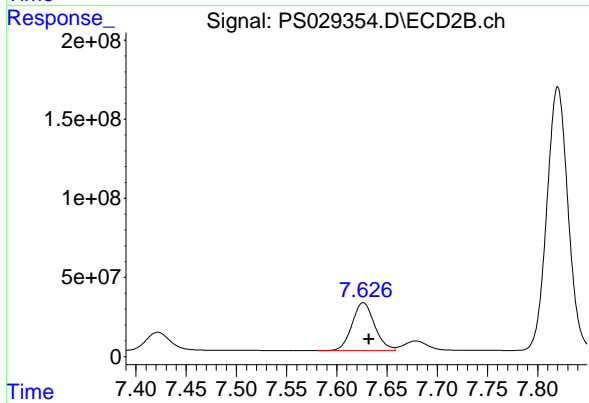
#3 4-Nitrophenol

R.T.: 7.158 min  
 Delta R.T.: -0.004 min  
 Response: 353095173  
 Conc: 442.73 ng/ml



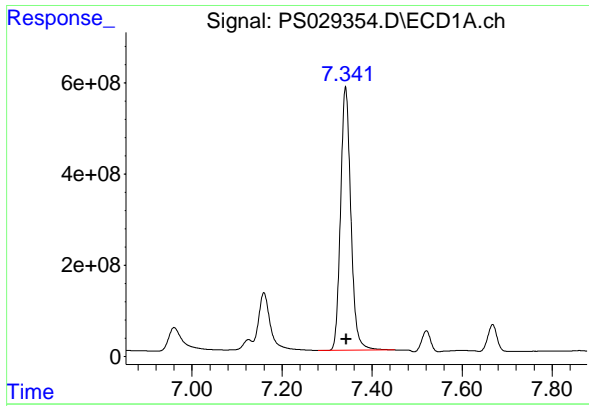
#4 2,4-DCAA

R.T.: 7.160 min  
 Delta R.T.: 0.000 min  
 Response: 2278330436  
 Conc: 552.92 ng/ml



#4 2,4-DCAA

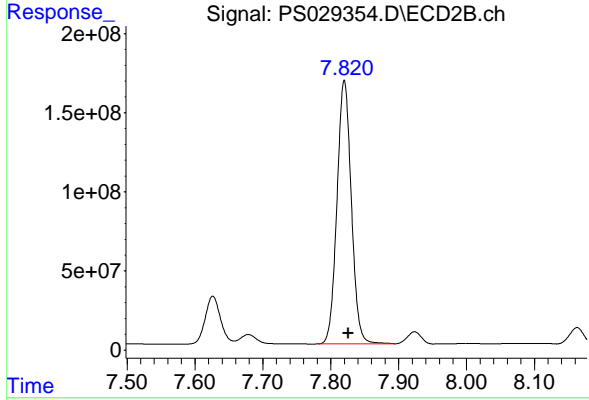
R.T.: 7.626 min  
 Delta R.T.: -0.006 min  
 Response: 471655438  
 Conc: 501.58 ng/ml



#5 DICAMBA

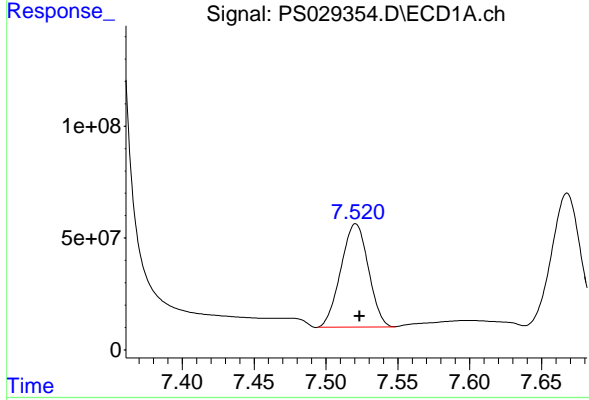
R.T.: 7.341 min  
 Delta R.T.: -0.001 min  
 Response: 9154152936  
 Conc: 527.13 ng/ml

Instrument :  
 ECD\_S  
 ClientSampleId :  
 PB166979BSD



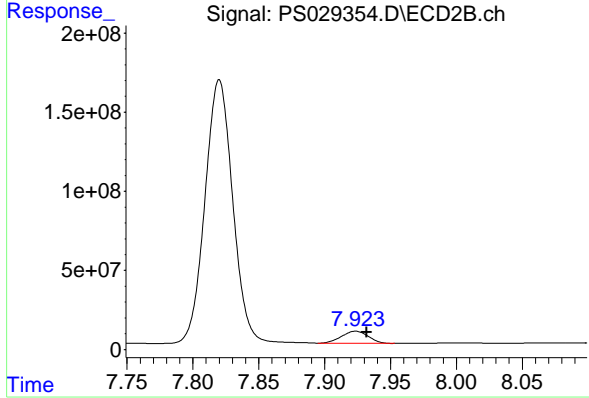
#5 DICAMBA

R.T.: 7.820 min  
 Delta R.T.: -0.006 min  
 Response: 2449454762  
 Conc: 475.35 ng/ml



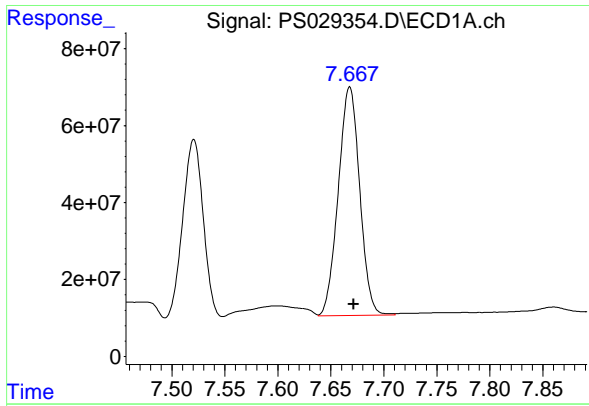
#6 MCPP

R.T.: 7.521 min  
 Delta R.T.: -0.003 min  
 Response: 615068477  
 Conc: 49.90 ug/ml



#6 MCPP

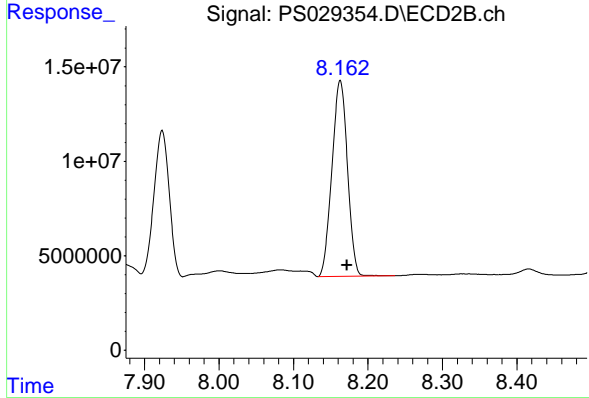
R.T.: 7.924 min  
 Delta R.T.: -0.008 min  
 Response: 109903430  
 Conc: 46.98 ug/ml



#7 MCPA

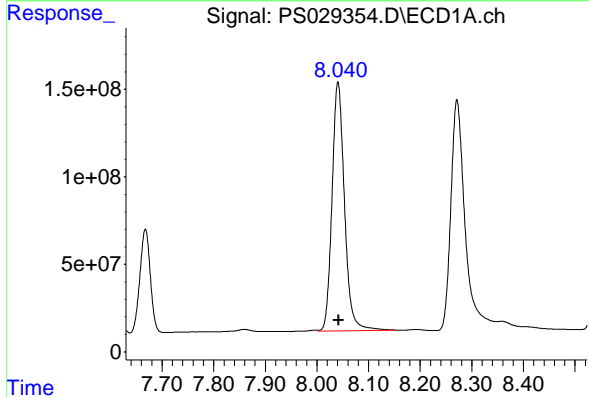
R.T.: 7.668 min  
 Delta R.T.: -0.004 min  
 Response: 834993043  
 Conc: 49.28 ug/ml

Instrument :  
 ECD\_S  
 ClientSampleId :  
 PB166979BSD



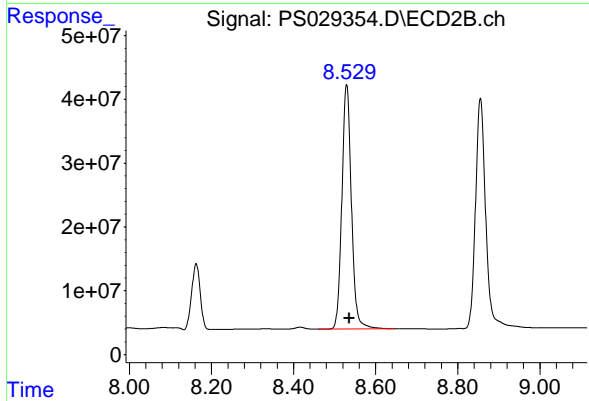
#7 MCPA

R.T.: 8.163 min  
 Delta R.T.: -0.009 min  
 Response: 150011019  
 Conc: 47.03 ug/ml



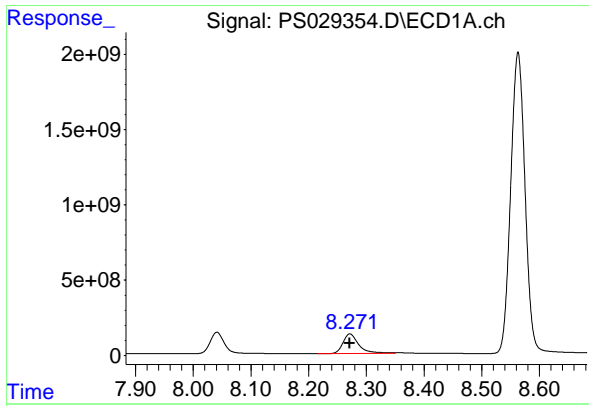
#8 DICHLORPROP

R.T.: 8.041 min  
 Delta R.T.: 0.000 min  
 Response: 2383375557  
 Conc: 518.52 ng/ml



#8 DICHLORPROP

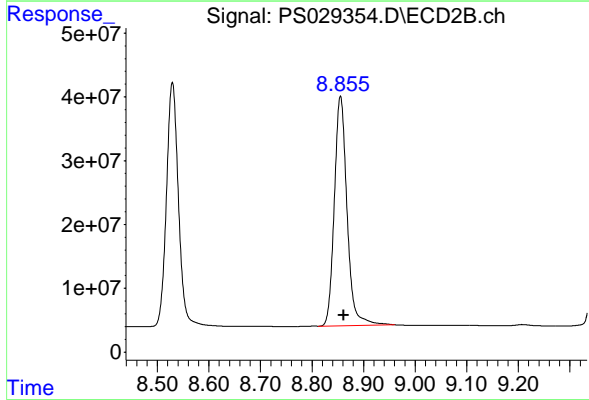
R.T.: 8.529 min  
 Delta R.T.: -0.007 min  
 Response: 619034232  
 Conc: 484.09 ng/ml



#9 2,4-D

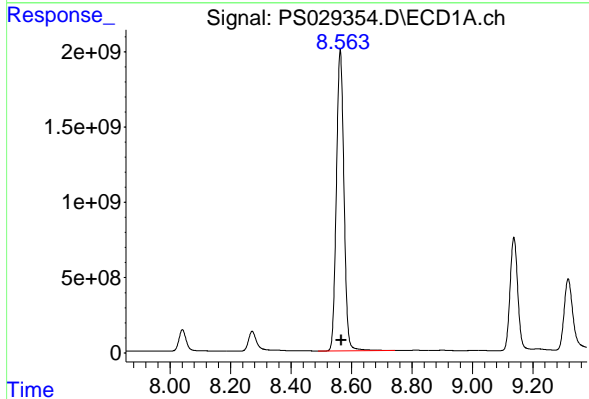
R.T.: 8.271 min  
 Delta R.T.: 0.000 min  
 Response: 2473480777  
 Conc: 520.69 ng/ml

Instrument : ECD\_S  
 ClientSampleId : PB166979BSD



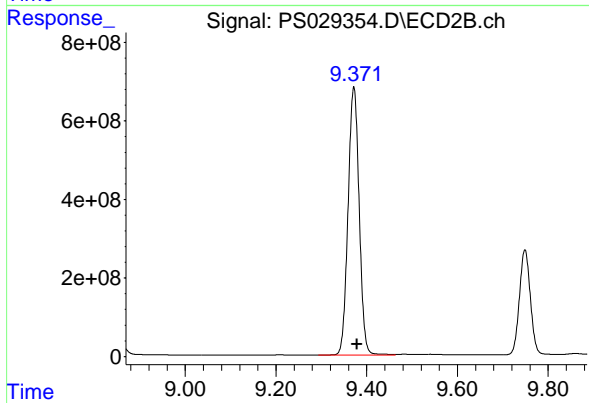
#9 2,4-D

R.T.: 8.855 min  
 Delta R.T.: -0.006 min  
 Response: 616460139  
 Conc: 485.44 ng/ml



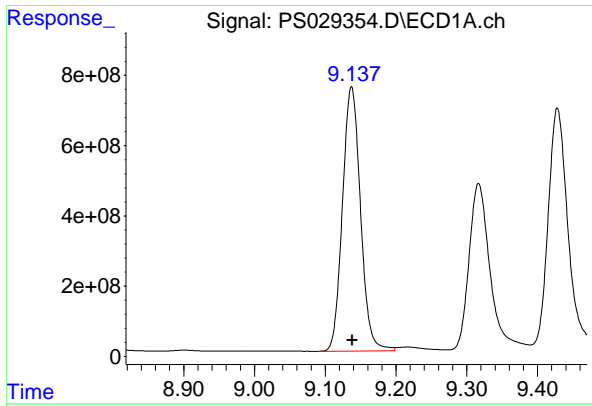
#10 Pentachlorophenol

R.T.: 8.563 min  
 Delta R.T.: -0.004 min  
 Response: 34700379589  
 Conc: 594.63 ng/ml



#10 Pentachlorophenol

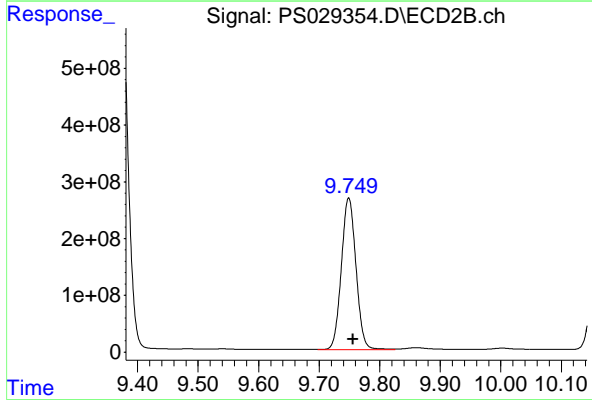
R.T.: 9.372 min  
 Delta R.T.: -0.007 min  
 Response: 11588011527  
 Conc: 503.55 ng/ml



#11 2,4,5-TP (SILVEX)

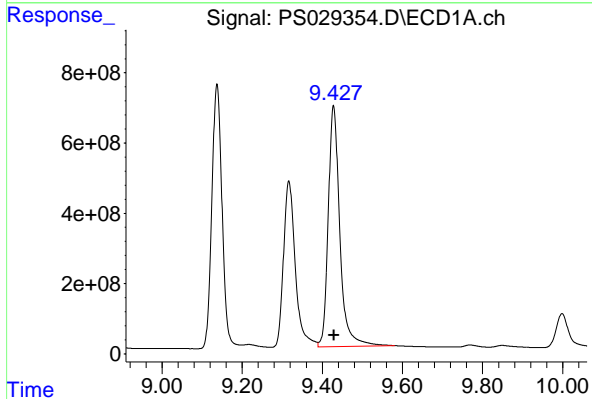
R.T.: 9.137 min  
 Delta R.T.: -0.001 min  
 Response: 13318983719  
 Conc: 541.71 ng/ml

Instrument :  
 ECD\_S  
 ClientSampleId :  
 PB166979BSD



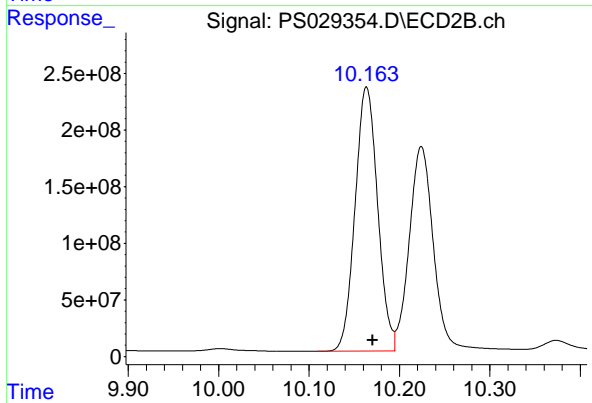
#11 2,4,5-TP (SILVEX)

R.T.: 9.749 min  
 Delta R.T.: -0.007 min  
 Response: 4493642463  
 Conc: 497.27 ng/ml



#12 2,4,5-T

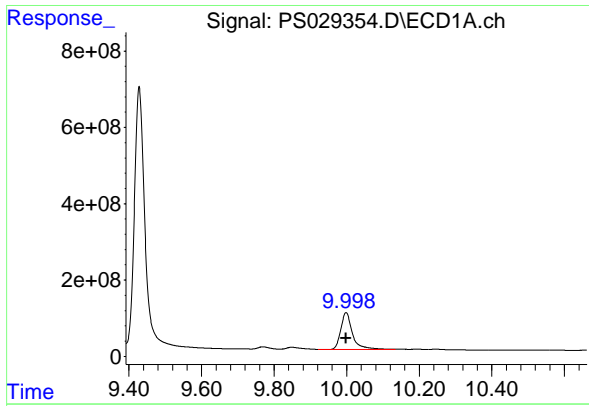
R.T.: 9.428 min  
 Delta R.T.: -0.001 min  
 Response: 13780311560  
 Conc: 540.64 ng/ml



#12 2,4,5-T

R.T.: 10.164 min  
 Delta R.T.: -0.007 min  
 Response: 4042080850  
 Conc: 492.32 ng/ml

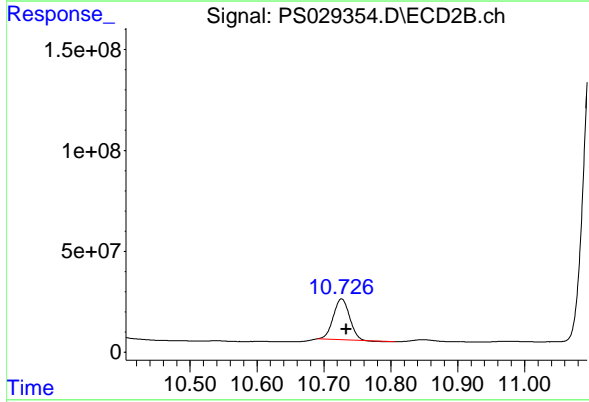




#13 2,4-DB

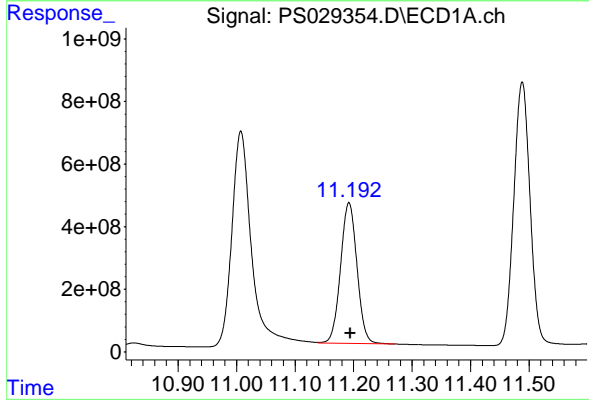
R.T.: 9.998 min  
 Delta R.T.: 0.000 min  
 Response: 2134629796  
 Conc: 511.24 ng/ml

Instrument :  
 ECD\_S  
 ClientSampleId :  
 PB166979BSD



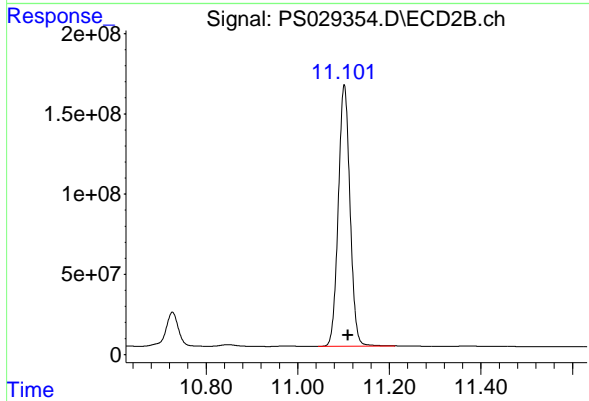
#13 2,4-DB

R.T.: 10.727 min  
 Delta R.T.: -0.007 min  
 Response: 337422224  
 Conc: 440.73 ng/ml



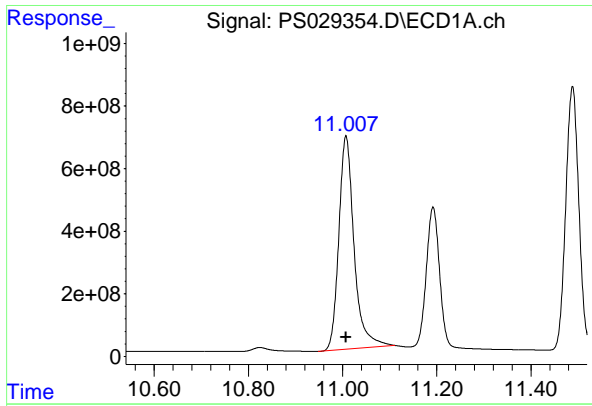
#14 DINOSEB

R.T.: 11.192 min  
 Delta R.T.: -0.003 min  
 Response: 8779533609  
 Conc: 527.91 ng/ml m



#14 DINOSEB

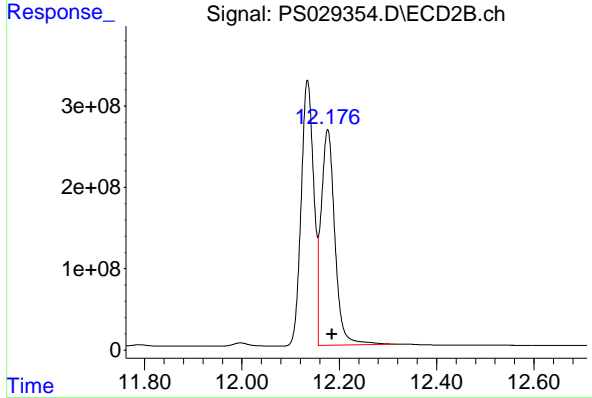
R.T.: 11.101 min  
 Delta R.T.: -0.008 min  
 Response: 2888906958  
 Conc: 476.60 ng/ml m



#15 Picloram

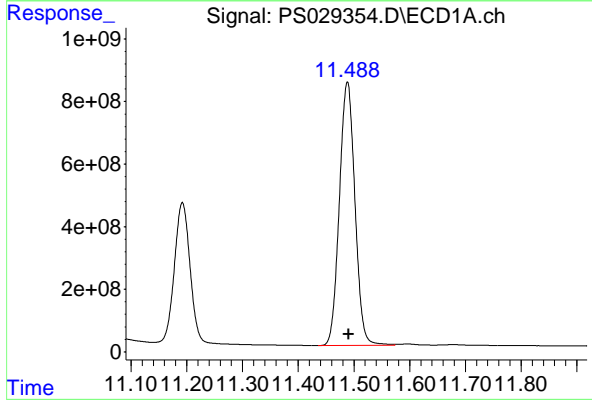
R.T.: 11.007 min  
 Delta R.T.: 0.000 min  
 Response: 15317177081  
 Conc: 501.49 ng/ml

Instrument :  
 ECD\_S  
 ClientSampleId :  
 PB166979BSD



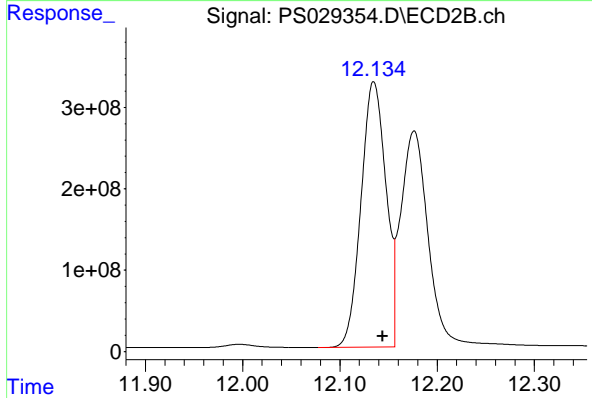
#15 Picloram

R.T.: 12.176 min  
 Delta R.T.: -0.009 min  
 Response: 5192826986  
 Conc: 449.11 ng/ml



#16 DCPA

R.T.: 11.488 min  
 Delta R.T.: -0.002 min  
 Response: 16341615828  
 Conc: 544.66 ng/ml



#16 DCPA

R.T.: 12.135 min  
 Delta R.T.: -0.009 min  
 Response: 5832898925  
 Conc: 492.79 ng/ml