

Data Path : Z:\pestpcbsrv\HPCHEM1\ECD_S\Data\PS030620\
 Data File : PS009153.D
 Signal(s) : Signal #1: ECD1A.ch Signal #2: ECD2B.ch
 Acq On : 06 Mar 2020 16:54
 Operator : DD\AJ
 Sample : L1778-11
 Misc :
 ALS Vial : 18 Sample Multiplier: 1

Instrument :
 ECD_S
 ClientSampleId :

Integration File signal 1: autoint1.e
 Integration File signal 2: autoint2.e
 Quant Time: Mar 06 23:23:06 2020
 Quant Method : Z:\pestpcbsrv\HPCHEM1\ECD_S\Method\PS022020.M
 Quant Title : 8080.M
 QLast Update : Thu Feb 20 11:30:26 2020
 Response via : Initial Calibration
 Integrator: ChemStation

Volume Inj. : 2 µl
 Signal #1 Phase : Rtx-CLPesticides Signal #2 Phase: Rtx-CLPesticides2
 Signal #1 Info : 30M x 0.32mm x0.5 Signal #2 Info : 30M x 0.32mm x 0.25µm

Compound	RT#1	RT#2	Resp#1	Resp#2	ng/ml	ng/ml

System Monitoring Compounds						
4) S 2,4-DCAA	7.246	6.937	247.8E6	74158751	113.307	76.964 #
Target Compounds						
1) T Dalapon	0.000	2.590	0	181.0E6	N.D.	123.795
2) T 3,5-DICHL...	0.000	6.113	0	187.2E6	N.D.	128.266
3) T 4-Nitroph...	0.000	6.568	0	15469338	N.D.	26.762
7) T MCPA	7.797	7.405	224.7E6	133.9E6	27.934	30.265
8) T DICHLORPROP	0.000	7.758	0	77555752	N.D.	77.406
10) T Pentachlo...	8.740	8.506	324.6E6	400.7E6	11.186	28.201 #
11) T 2,4,5-TP ...	0.000	8.789	0	39385164	N.D.	7.271
12) T 2,4,5-T	9.452	9.194	105.6E6	16405931	9.873	3.031 #
13) T 2,4-DB	10.109	9.732	231.9E6	136.8E6	160.701	194.805
14) T DINOSEB	0.000	10.059	0	59904702	N.D.	15.150
15) T Picloram	0.000	11.056	0	77681575	N.D.	10.690
16) T DCPA	11.493	10.971	60831561	35564811	4.427	5.140

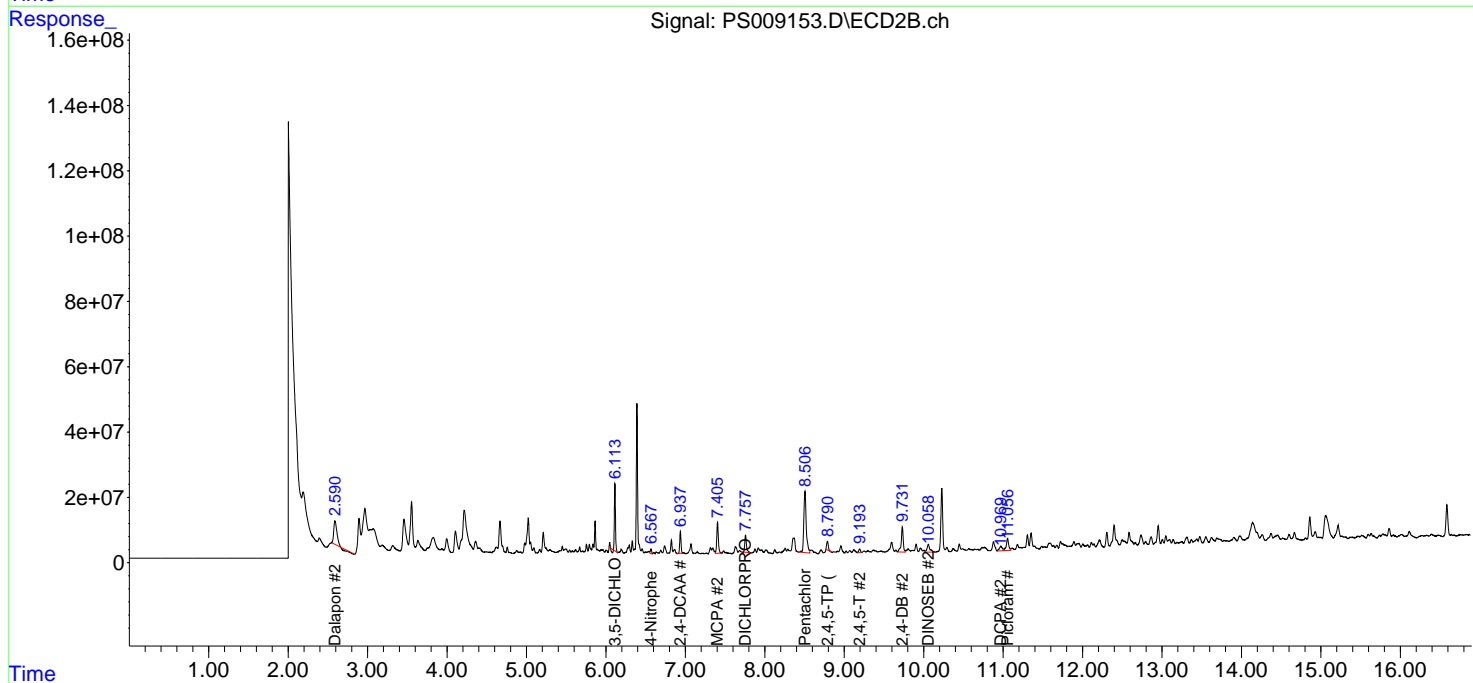
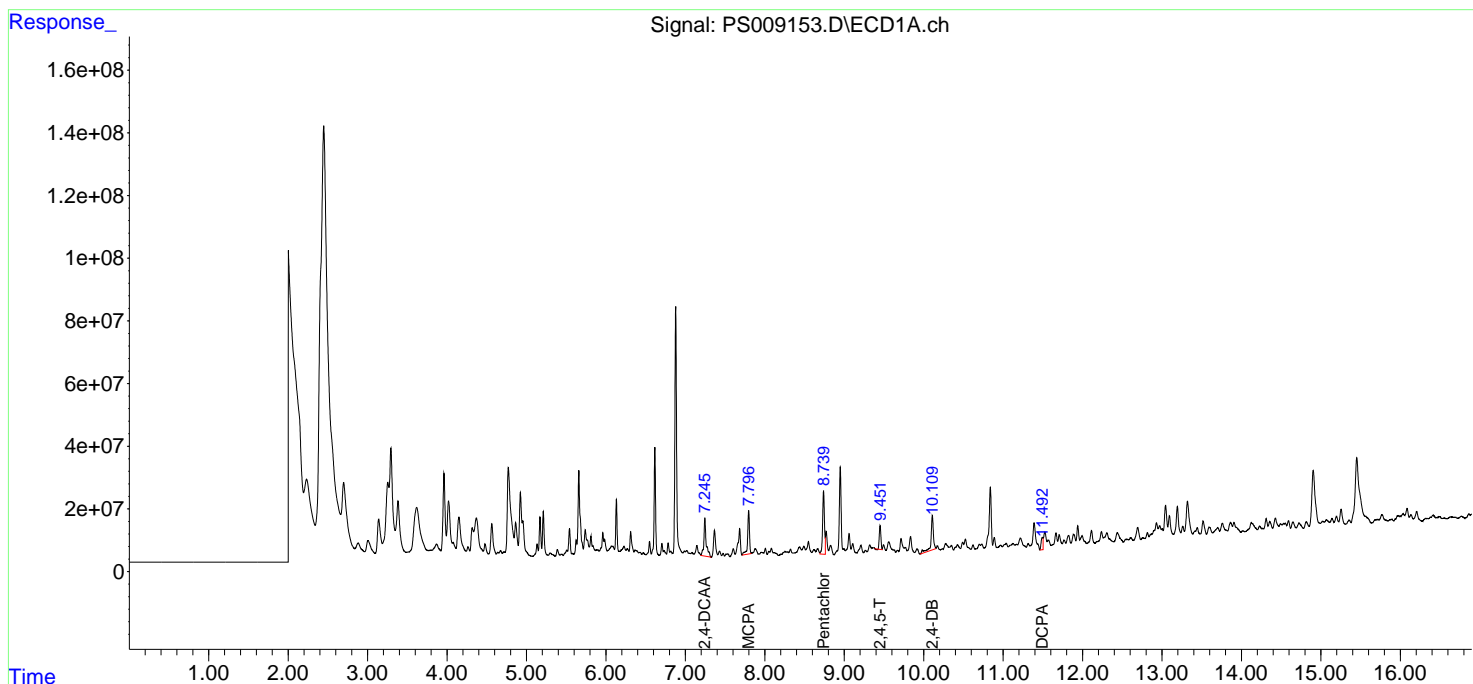
(f)=RT Delta > 1/2 Window (#)=Amounts differ by > 25% (m)=manual int.

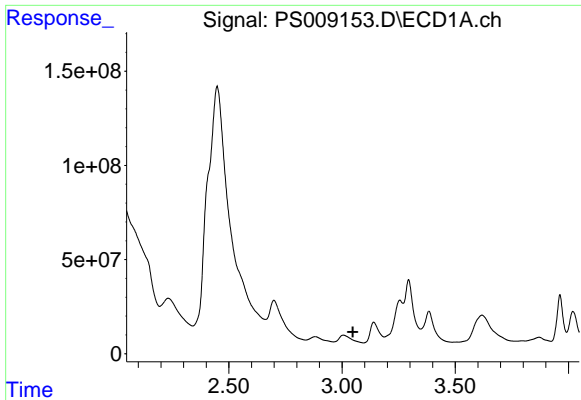
Data Path : Z:\pestpcbsrv\HPCHEM1\ECD_S\Data\PS030620\
 Data File : PS009153.D
 Signal(s) : Signal #1: ECD1A.ch Signal #2: ECD2B.ch
 Acq On : 06 Mar 2020 16:54
 Operator : DD\AJ
 Sample : L1778-11
 Misc :
 ALS Vial : 18 Sample Multiplier: 1

Instrument :
 ECD_S
 ClientSampled :

Integration File signal 1: autoint1.e
 Integration File signal 2: autoint2.e
 Quant Time: Mar 06 23:23:06 2020
 Quant Method : Z:\pestpcbsrv\HPCHEM1\ECD_S\Method\PS022020.M
 Quant Title : 8080.M
 QLast Update : Thu Feb 20 11:30:26 2020
 Response via : Initial Calibration
 Integrator: ChemStation

Volume Inj. : 2 µl
 Signal #1 Phase : Rtx-CLPesticides Signal #2 Phase: Rtx-CLPesticides2
 Signal #1 Info : 30M x 0.32mm x0.5 Signal #2 Info : 30M x 0.32mm x 0.25µm

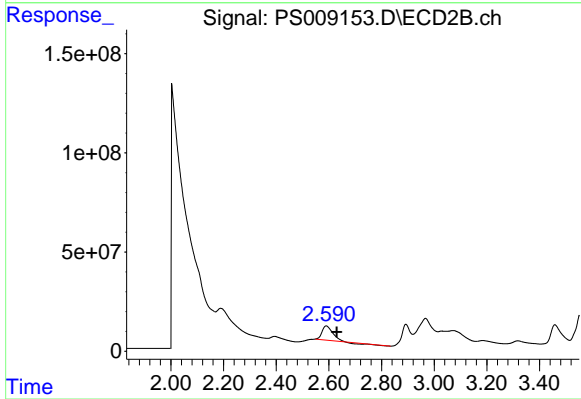




#1 Dalapon

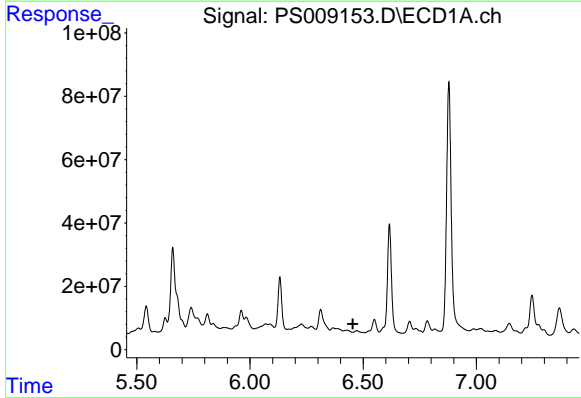
R.T.: 0.000 min
 Exp R.T. : 3.048 min
 Response: 0
 Conc: N.D.

Instrument :
 ECD_S
 ClientSampleId :



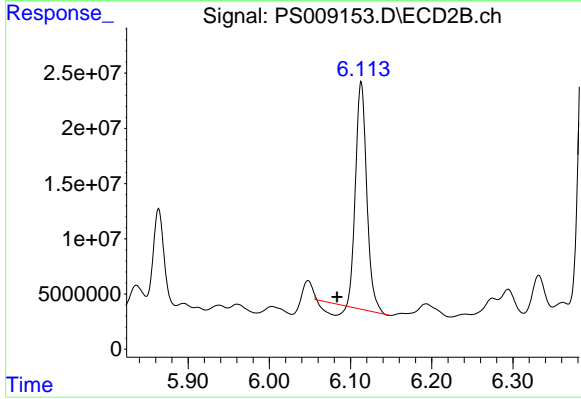
#1 Dalapon

R.T.: 2.590 min
 Delta R.T.: -0.040 min
 Response: 181014887
 Conc: 123.79 ng/ml



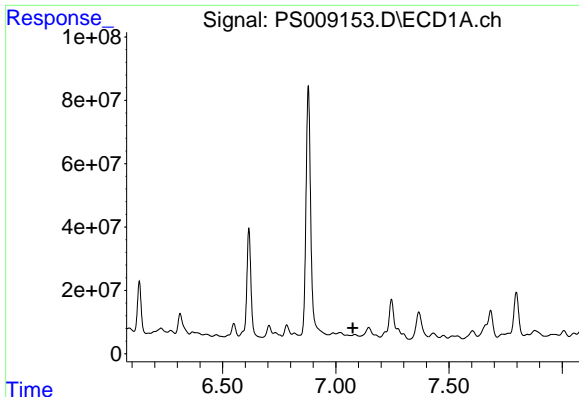
#2 3,5-DICHLOROBENZOIC ACID

R.T.: 0.000 min
 Exp R.T. : 6.455 min
 Response: 0
 Conc: N.D.



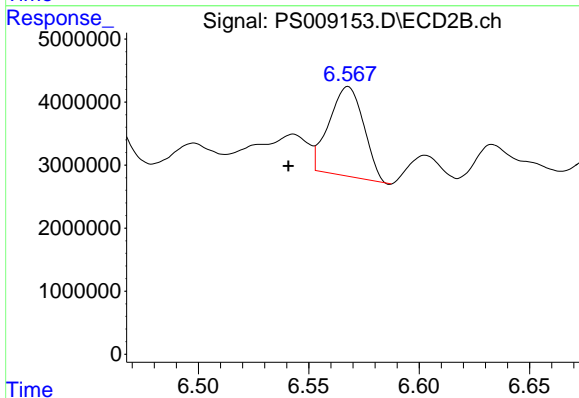
#2 3,5-DICHLOROBENZOIC ACID

R.T.: 6.113 min
 Delta R.T.: 0.030 min
 Response: 187174889
 Conc: 128.27 ng/ml

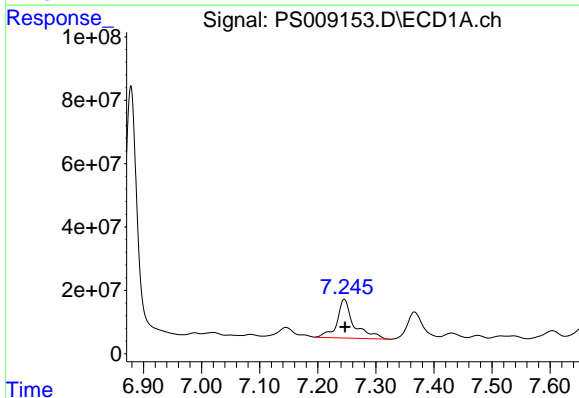


#3 4-Nitrophenol
 R.T.: 0.000 min
 Exp R.T.: 7.075 min
 Response: 0
 Conc: N.D.

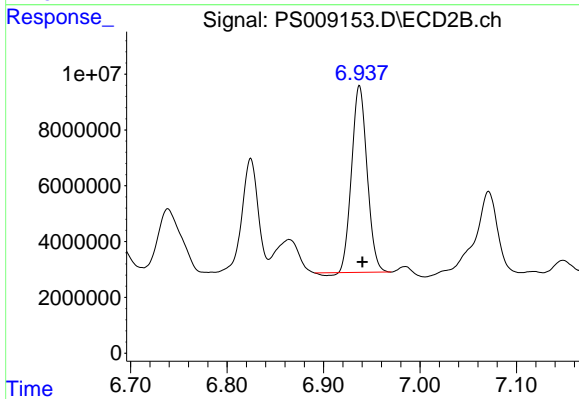
Instrument :
 ECD_S
 ClientSampleId :



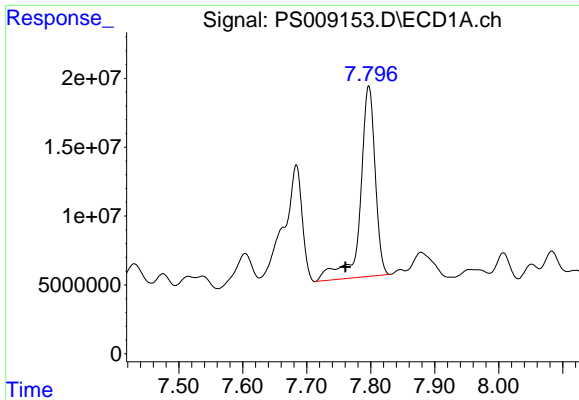
#3 4-Nitrophenol
 R.T.: 6.568 min
 Delta R.T.: 0.027 min
 Response: 15469338
 Conc: 26.76 ng/ml



#4 2,4-DCAA
 R.T.: 7.246 min
 Delta R.T.: -0.001 min
 Response: 247755861
 Conc: 113.31 ng/ml



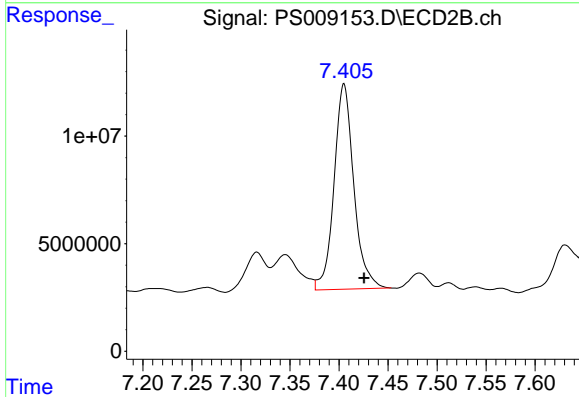
#4 2,4-DCAA
 R.T.: 6.937 min
 Delta R.T.: -0.003 min
 Response: 74158751
 Conc: 76.96 ng/ml



#7 MCPA

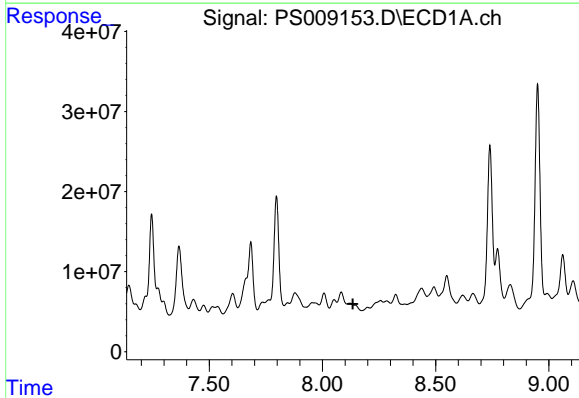
R.T.: 7.797 min
 Delta R.T.: 0.036 min
 Response: 224700833
 Conc: 27.93 ug/ml

Instrument :
 ECD_S
 ClientSampled :



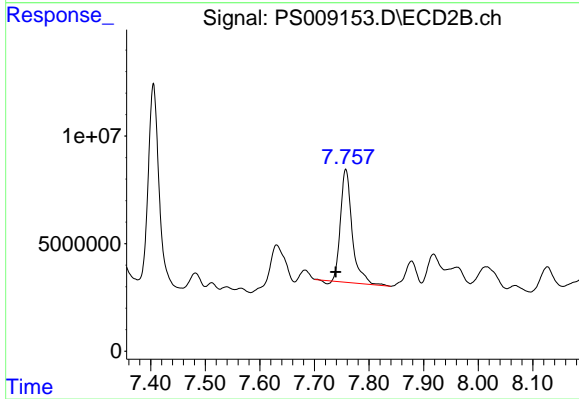
#7 MCPA

R.T.: 7.405 min
 Delta R.T.: -0.020 min
 Response: 133897581
 Conc: 30.26 ug/ml



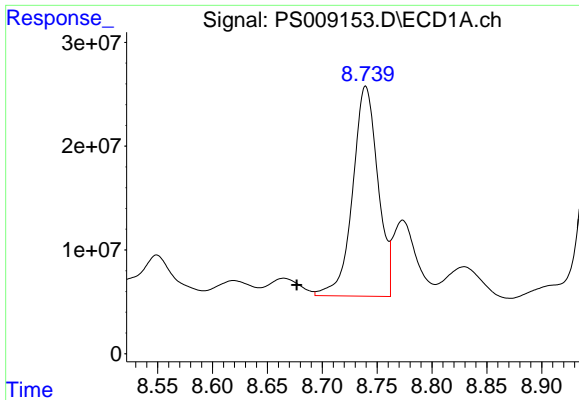
#8 DICHLORPROP

R.T.: 0.000 min
 Exp R.T. : 8.135 min
 Response: 0
 Conc: N.D.



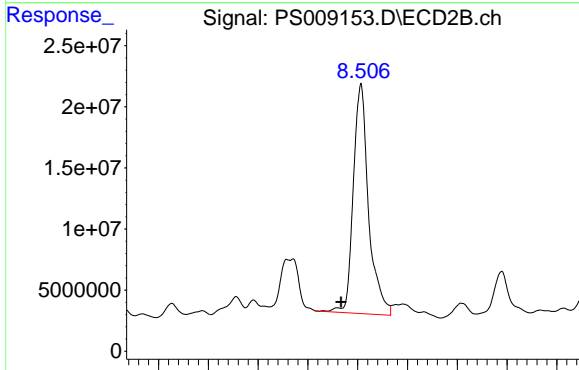
#8 DICHLORPROP

R.T.: 7.758 min
 Delta R.T.: 0.018 min
 Response: 77555752
 Conc: 77.41 ng/ml

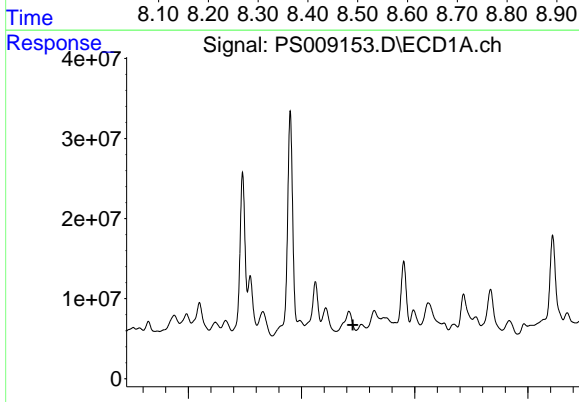


#10 Pentachlorophenol
 R.T.: 8.740 min
 Delta R.T.: 0.063 min
 Response: 324640378
 Conc: 11.19 ng/ml

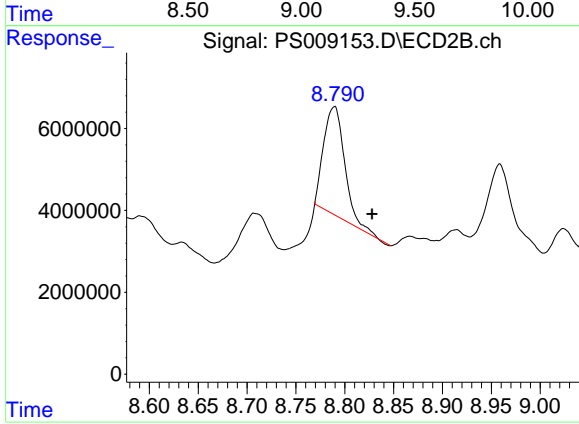
Instrument :
 ECD_S
 ClientSampled :



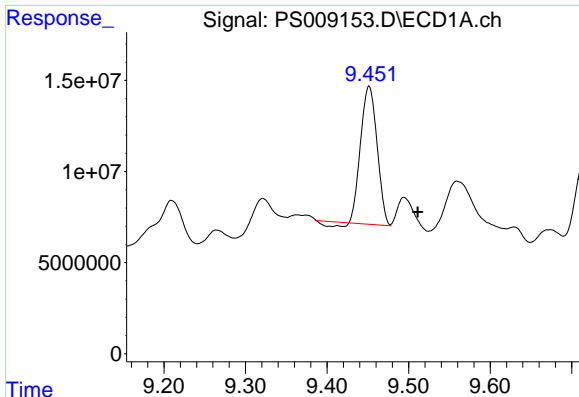
#10 Pentachlorophenol
 R.T.: 8.506 min
 Delta R.T.: 0.040 min
 Response: 400658829
 Conc: 28.20 ng/ml



#11 2,4,5-TP (SILVEX)
 R.T.: 0.000 min
 Exp R.T. : 9.227 min
 Response: 0
 Conc: N.D.



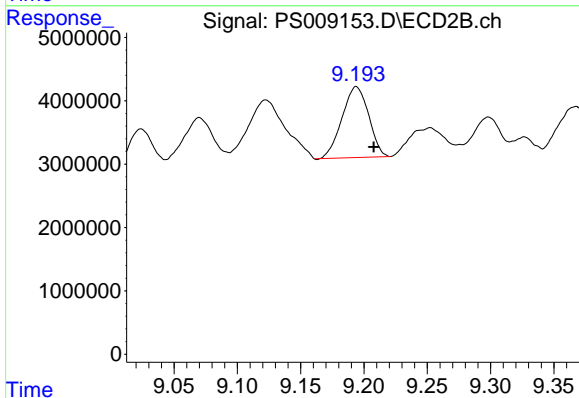
#11 2,4,5-TP (SILVEX)
 R.T.: 8.789 min
 Delta R.T.: -0.039 min
 Response: 39385164
 Conc: 7.27 ng/ml



#12 2,4,5-T

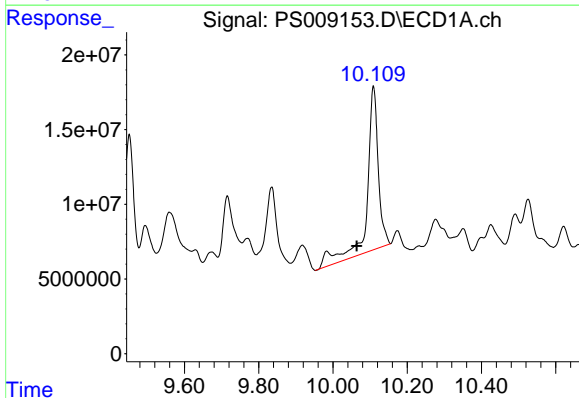
R.T.: 9.452 min
 Delta R.T.: -0.060 min
 Response: 105560397
 Conc: 9.87 ng/ml

Instrument :
 ECD_S
 ClientSampleId :



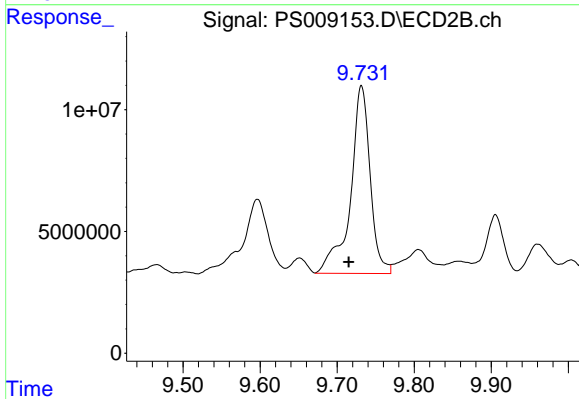
#12 2,4,5-T

R.T.: 9.194 min
 Delta R.T.: -0.014 min
 Response: 16405931
 Conc: 3.03 ng/ml



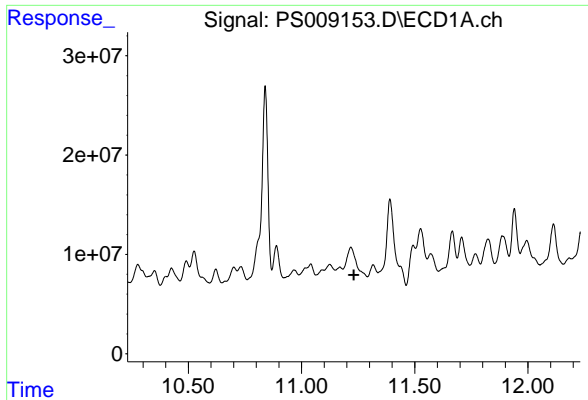
#13 2,4-DB

R.T.: 10.109 min
 Delta R.T.: 0.045 min
 Response: 231897571
 Conc: 160.70 ng/ml



#13 2,4-DB

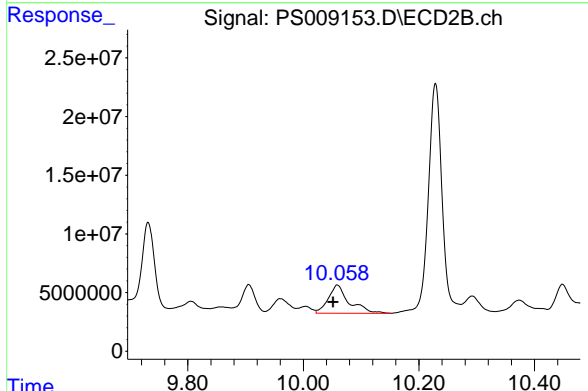
R.T.: 9.732 min
 Delta R.T.: 0.016 min
 Response: 136838573
 Conc: 194.81 ng/ml



#14 DINOSEB

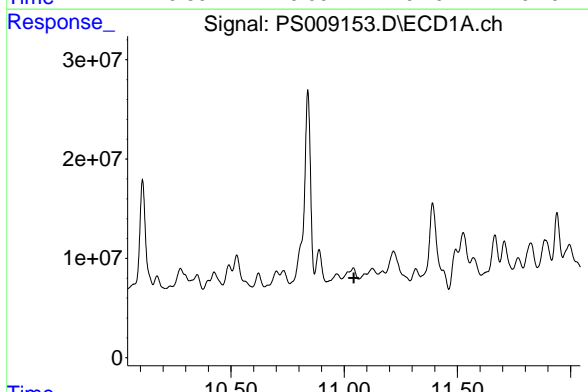
R.T.: 0.000 min
 Exp R.T. : 11.231 min
 Response: 0
 Conc: N.D.

Instrument :
 ECD_S
 ClientSampled :



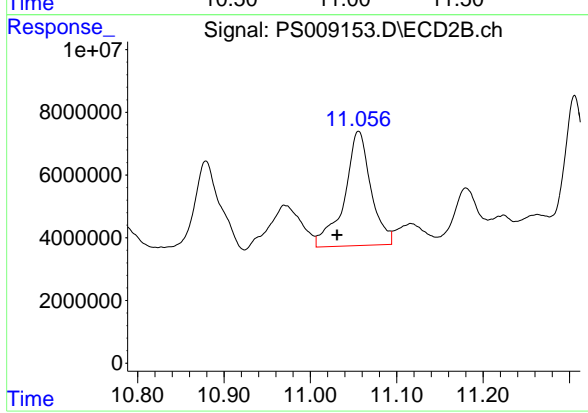
#14 DINOSEB

R.T.: 10.059 min
 Delta R.T.: 0.008 min
 Response: 59904702
 Conc: 15.15 ng/ml



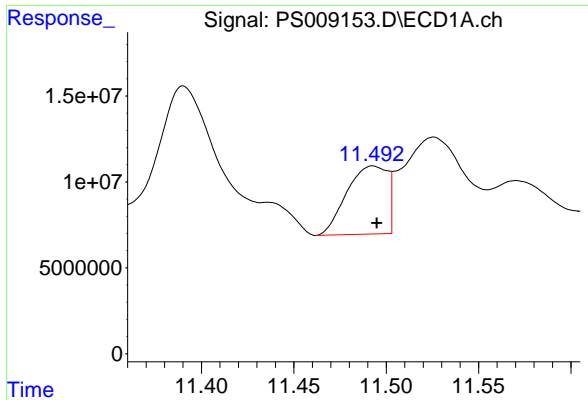
#15 Picloram

R.T.: 0.000 min
 Exp R.T. : 11.043 min
 Response: 0
 Conc: N.D.



#15 Picloram

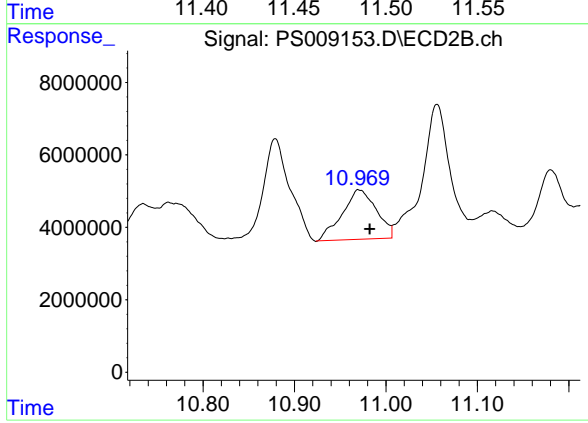
R.T.: 11.056 min
 Delta R.T.: 0.025 min
 Response: 77681575
 Conc: 10.69 ng/ml



#16 DCPA

R.T.: 11.493 min
Delta R.T.: -0.002 min
Response: 60831561
Conc: 4.43 ng/ml

Instrument :
ECD_S
ClientSampled :



#16 DCPA

R.T.: 10.971 min
Delta R.T.: -0.011 min
Response: 35564811
Conc: 5.14 ng/ml