

Data Path : Z:\pestpcbsrv\HPCHEM1\ECD\_S\Data\PS030620\  
 Data File : PS009168.D  
 Signal(s) : Signal #1: ECD1A.ch Signal #2: ECD2B.ch  
 Acq On : 06 Mar 2020 22:38  
 Operator : DD\AJ  
 Sample : L1792-07  
 Misc :  
 ALS Vial : 31 Sample Multiplier: 1

Instrument :  
 ECD\_S  
 ClientSampleId :

Integration File signal 1: autoint1.e  
 Integration File signal 2: autoint2.e  
 Quant Time: Mar 06 23:25:52 2020  
 Quant Method : Z:\pestpcbsrv\HPCHEM1\ECD\_S\Method\PS022020.M  
 Quant Title : 8080.M  
 QLast Update : Thu Feb 20 11:30:26 2020  
 Response via : Initial Calibration  
 Integrator: ChemStation

Volume Inj. : 2 µl  
 Signal #1 Phase : Rtx-CLPesticides Signal #2 Phase: Rtx-CLPesticides2  
 Signal #1 Info : 30M x 0.32mm x0.5 Signal #2 Info : 30M x 0.32mm x 0.25µm

| Compound                    | RT#1   | RT#2   | Resp#1   | Resp#2   | ng/ml   | ng/ml     |
|-----------------------------|--------|--------|----------|----------|---------|-----------|
| -----                       |        |        |          |          |         |           |
| System Monitoring Compounds |        |        |          |          |         |           |
| 4) S 2,4-DCAA               | 7.245  | 6.937  | 624.2E6  | 296.4E6  | 285.463 | 307.615   |
| Target Compounds            |        |        |          |          |         |           |
| 1) T Dalapon                | 0.000  | 2.588  | 0        | 142.0E6  | N.D.    | 97.132    |
| 2) T 3,5-DICHL...           | 6.498  | 6.073  | 90375589 | 25250104 | 31.560  | 17.303 #  |
| 5) T DICAMBA                | 0.000  | 7.104  | 0        | 9318283  | N.D.    | 2.251     |
| 6) T MCPP                   | 7.680  | 7.164  | 160.3E6  | 97443538 | 26.646  | 32.145    |
| 7) T MCPA                   | 7.744  | 7.405  | 423.5E6  | 79376176 | 52.652  | 17.941 #  |
| 8) T DICHLORPROP            | 0.000  | 7.756  | 0        | 57427487 | N.D.    | 57.317    |
| 9) T 2,4-D                  | 8.430  | 8.056  | 35061205 | 35330031 | 16.919  | 29.819 #  |
| 10) T Pentachlo...          | 0.000  | 8.429  | 0        | 9538243  | N.D.    | <MDL      |
| 11) T 2,4,5-TP ...          | 0.000  | 8.797  | 0        | 91719044 | N.D.    | 16.932    |
| 12) T 2,4,5-T               | 9.534  | 0.000  | 108.3E6  | 0        | 10.128  | N.D. #    |
| 13) T 2,4-DB                | 10.073 | 9.726  | 31542181 | 54773632 | 21.858  | 77.977 #  |
| 14) T DINOSEB               | 11.171 | 10.072 | 251.6E6  | 852.9E6  | 29.744  | 215.712 # |
| 15) T Picloram              | 11.084 | 11.028 | 1629.6E6 | 23567279 | 119.030 | 3.243 #   |
| 16) T DCPA                  | 0.000  | 10.984 | 0        | 92565463 | N.D.    | 13.378    |
| -----                       |        |        |          |          |         |           |

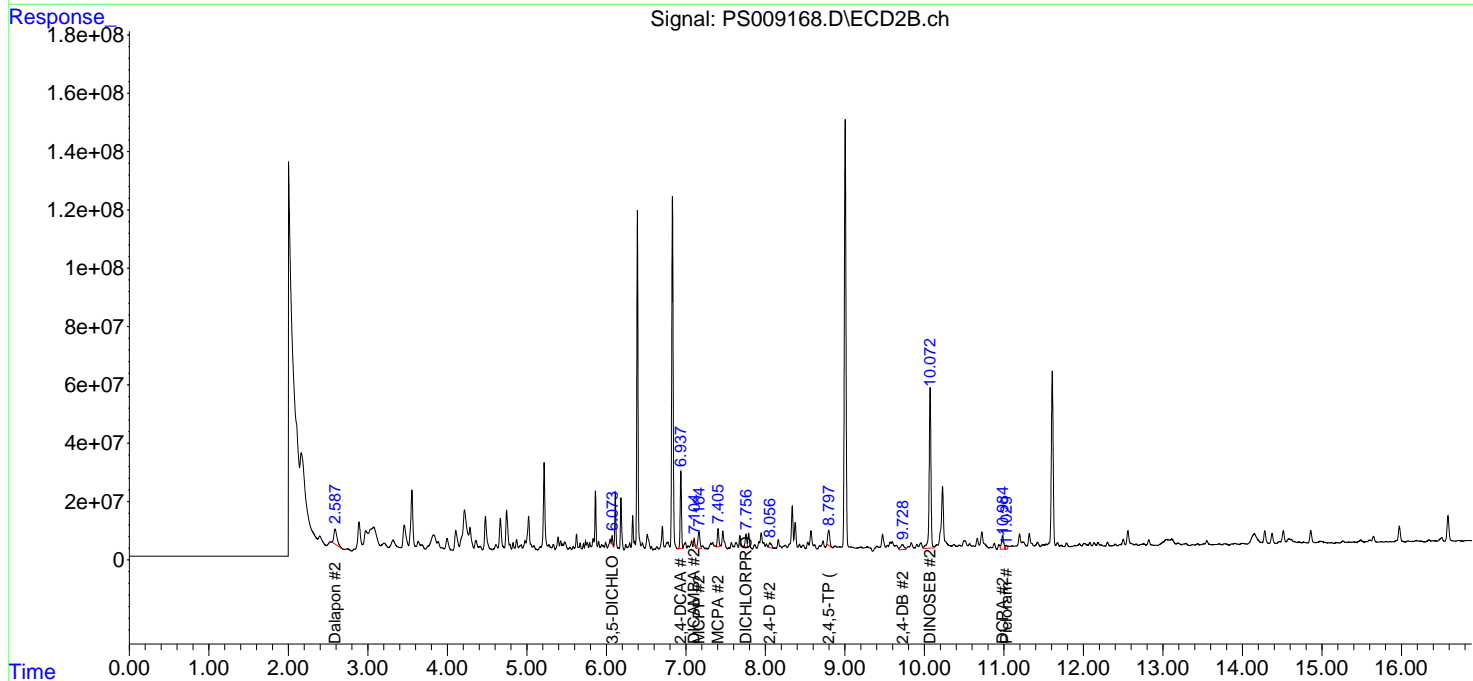
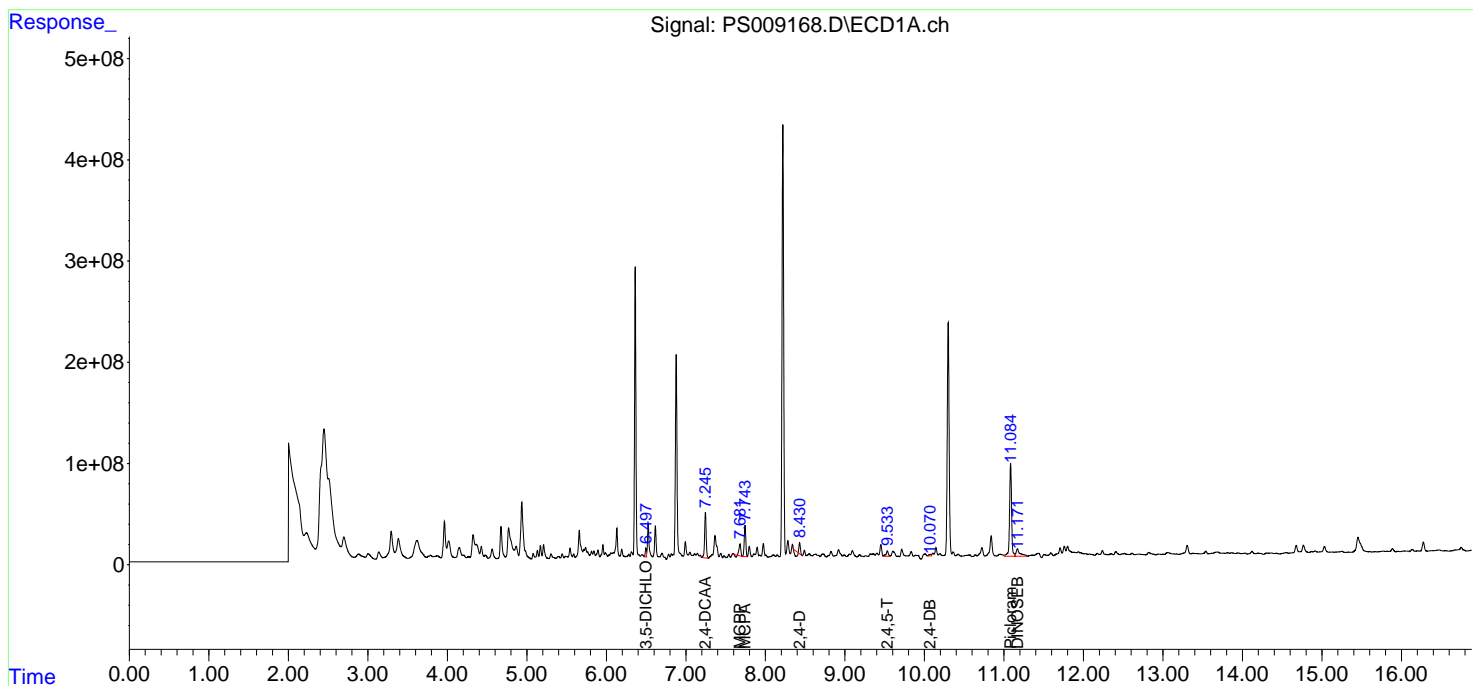
(f)=RT Delta > 1/2 Window (#)=Amounts differ by > 25% (m)=manual int.

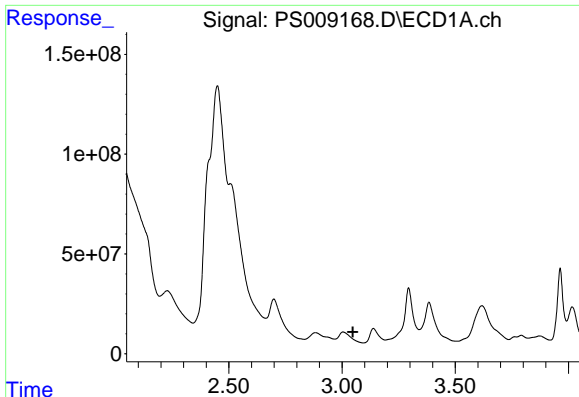
Data Path : Z:\pestpcbsrv\HPCHEM1\ECD\_S\Data\PS030620\  
 Data File : PS009168.D  
 Signal(s) : Signal #1: ECD1A.ch Signal #2: ECD2B.ch  
 Acq On : 06 Mar 2020 22:38  
 Operator : DD\AJ  
 Sample : L1792-07  
 Misc :  
 ALS Vial : 31 Sample Multiplier: 1

Instrument :  
 ECD\_S  
 ClientSampled :

Integration File signal 1: autoint1.e  
 Integration File signal 2: autoint2.e  
 Quant Time: Mar 06 23:25:52 2020  
 Quant Method : Z:\pestpcbsrv\HPCHEM1\ECD\_S\Method\PS022020.M  
 Quant Title : 8080.M  
 QLast Update : Thu Feb 20 11:30:26 2020  
 Response via : Initial Calibration  
 Integrator: ChemStation

Volume Inj. : 2 µl  
 Signal #1 Phase : Rtx-CLPesticides Signal #2 Phase: Rtx-CLPesticides2  
 Signal #1 Info : 30M x 0.32mm x0.5 Signal #2 Info : 30M x 0.32mm x 0.25µm

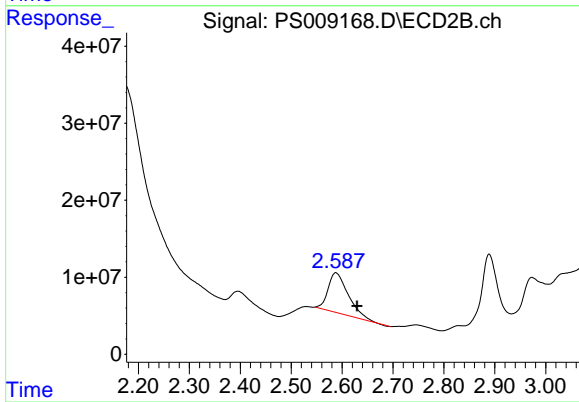




#1 Dalapon

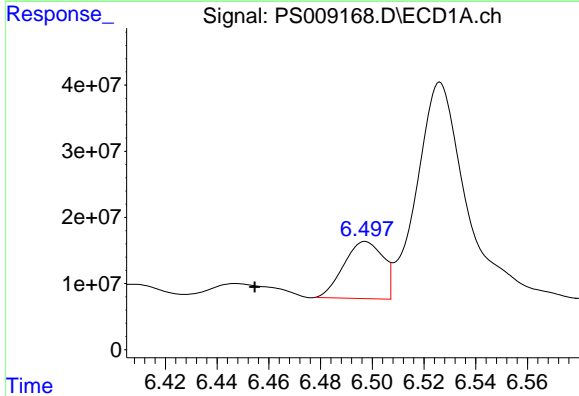
R.T.: 0.000 min  
 Exp R.T.: 3.048 min  
 Response: 0  
 Conc: N.D.

Instrument :  
 ECD\_S  
 ClientSampled :



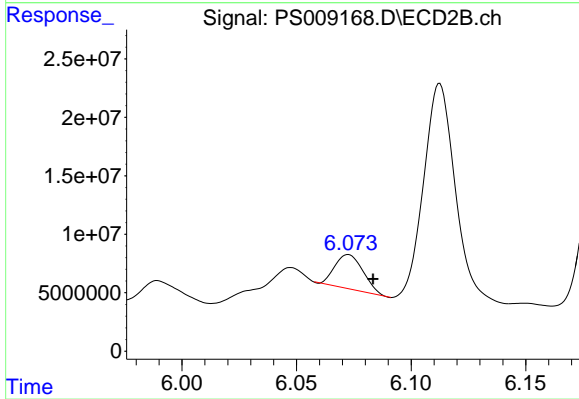
#1 Dalapon

R.T.: 2.588 min  
 Delta R.T.: -0.042 min  
 Response: 142028393  
 Conc: 97.13 ng/ml



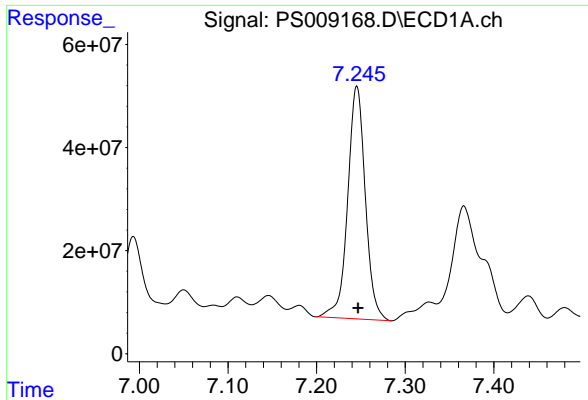
#2 3,5-DICHLOROBENZOIC ACID

R.T.: 6.498 min  
 Delta R.T.: 0.043 min  
 Response: 90375589  
 Conc: 31.56 ng/ml



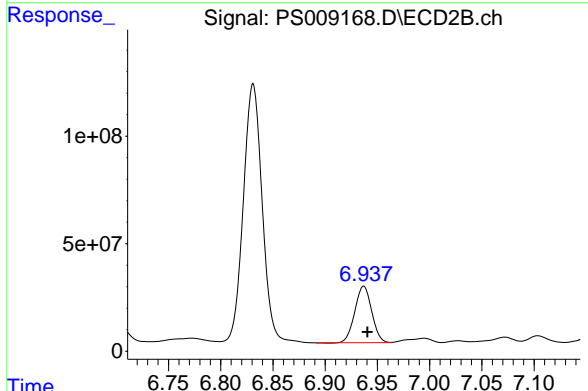
#2 3,5-DICHLOROBENZOIC ACID

R.T.: 6.073 min  
 Delta R.T.: -0.011 min  
 Response: 25250104  
 Conc: 17.30 ng/ml

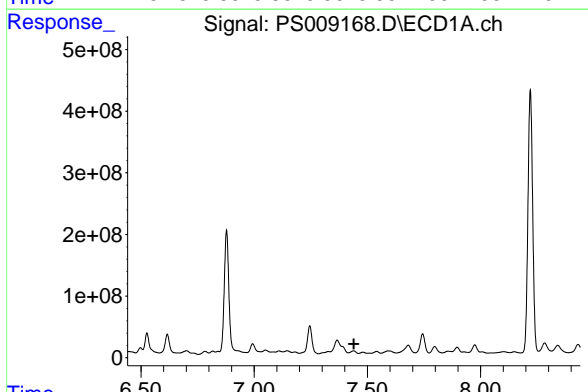


#4 2,4-DCAA  
 R.T.: 7.245 min  
 Delta R.T.: -0.001 min  
 Response: 624191500  
 Conc: 285.46 ng/ml

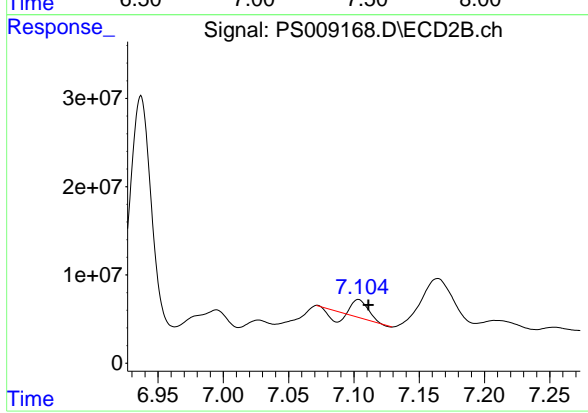
Instrument :  
 ECD\_S  
 ClientSampleId :



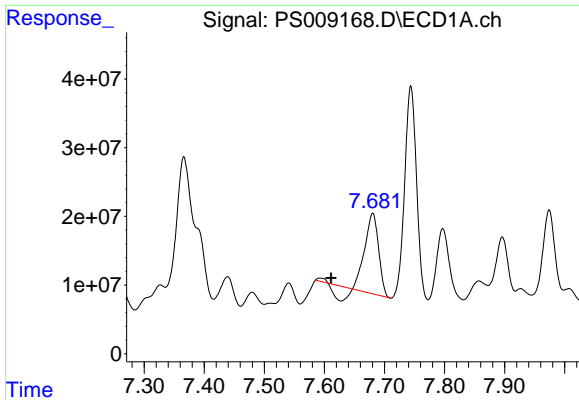
#4 2,4-DCAA  
 R.T.: 6.937 min  
 Delta R.T.: -0.004 min  
 Response: 296404456  
 Conc: 307.62 ng/ml



#5 DICAMBA  
 R.T.: 0.000 min  
 Exp R.T. : 7.440 min  
 Response: 0  
 Conc: N.D.

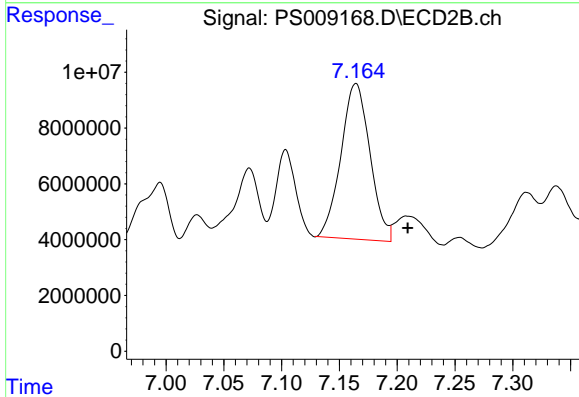


#5 DICAMBA  
 R.T.: 7.104 min  
 Delta R.T.: -0.007 min  
 Response: 9318283  
 Conc: 2.25 ng/ml

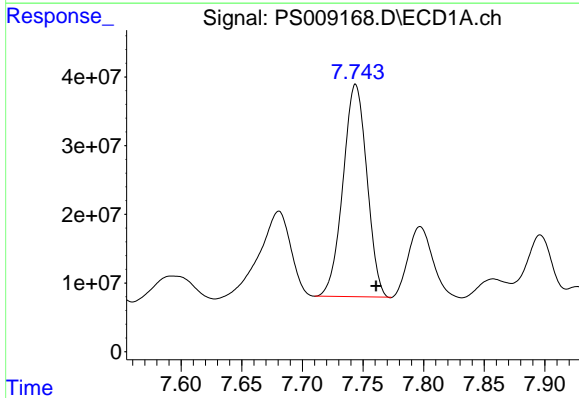


#6 MCP  
 R.T.: 7.680 min  
 Delta R.T.: 0.069 min  
 Response: 160262190  
 Conc: 26.65 ug/ml

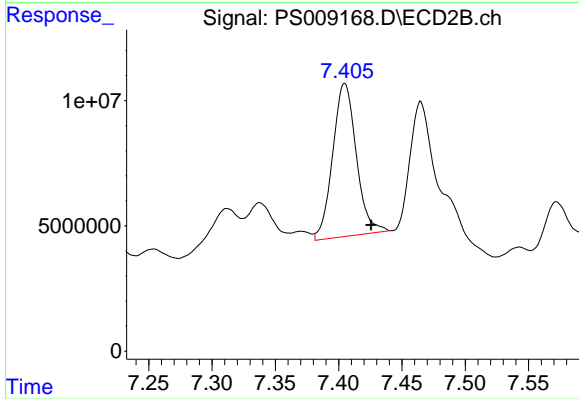
Instrument :  
 ECD\_S  
 ClientSampleId :



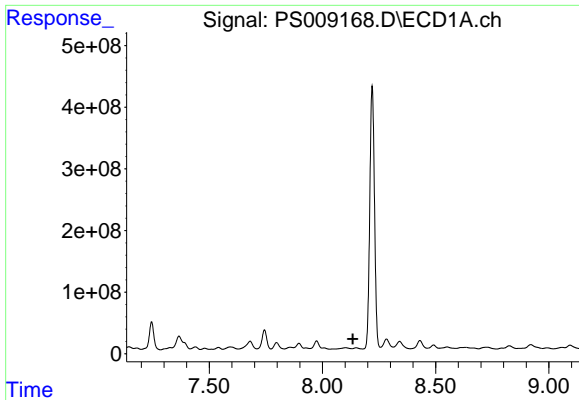
#6 MCP  
 R.T.: 7.164 min  
 Delta R.T.: -0.045 min  
 Response: 97443538  
 Conc: 32.14 ug/ml



#7 MCPA  
 R.T.: 7.744 min  
 Delta R.T.: -0.017 min  
 Response: 423528782  
 Conc: 52.65 ug/ml



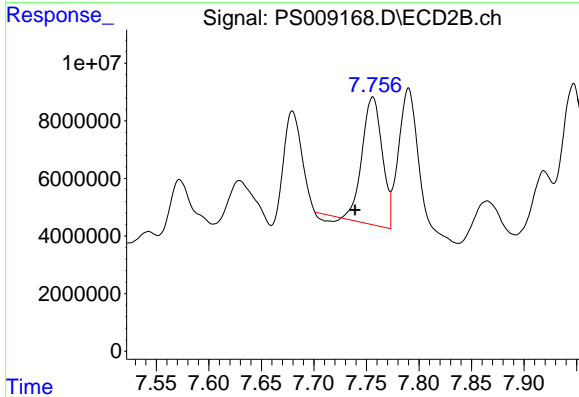
#7 MCPA  
 R.T.: 7.405 min  
 Delta R.T.: -0.021 min  
 Response: 79376176  
 Conc: 17.94 ug/ml



#8 DICHLORPROP

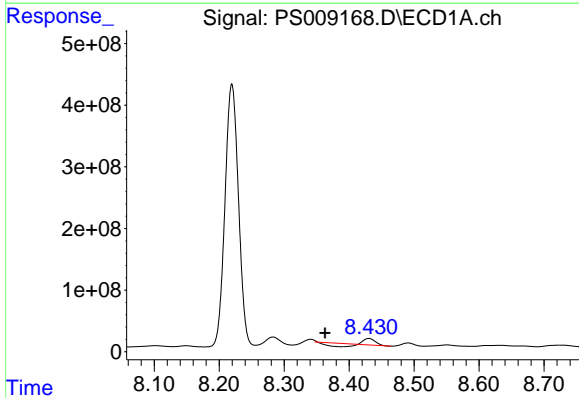
R.T.: 0.000 min  
 Exp R.T.: 8.135 min  
 Response: 0  
 Conc: N.D.

Instrument :  
 ECD\_S  
 ClientSampleId :



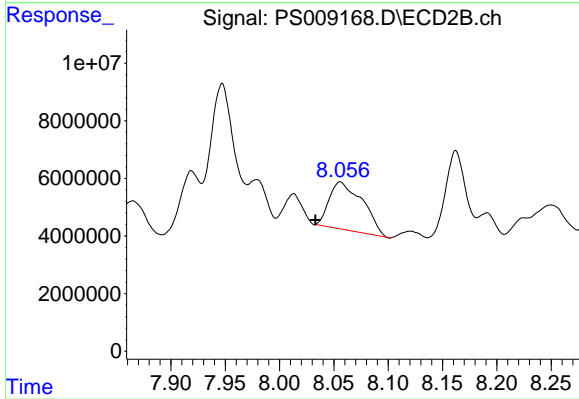
#8 DICHLORPROP

R.T.: 7.756 min  
 Delta R.T.: 0.017 min  
 Response: 57427487  
 Conc: 57.32 ng/ml



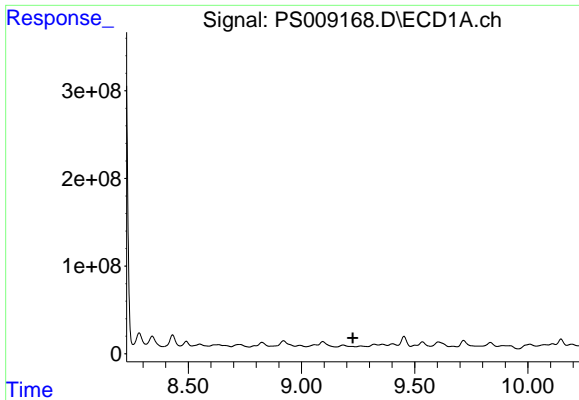
#9 2,4-D

R.T.: 8.430 min  
 Delta R.T.: 0.068 min  
 Response: 35061205  
 Conc: 16.92 ng/ml



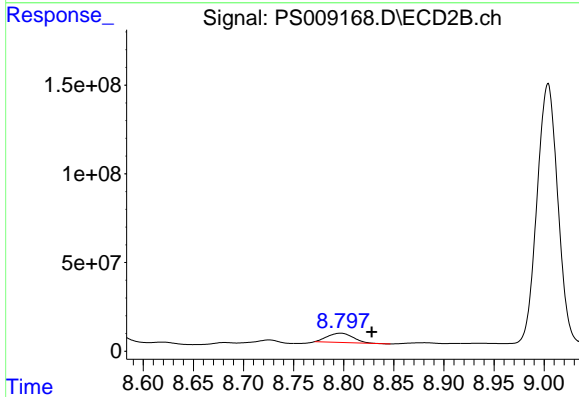
#9 2,4-D

R.T.: 8.056 min  
 Delta R.T.: 0.023 min  
 Response: 35330031  
 Conc: 29.82 ng/ml

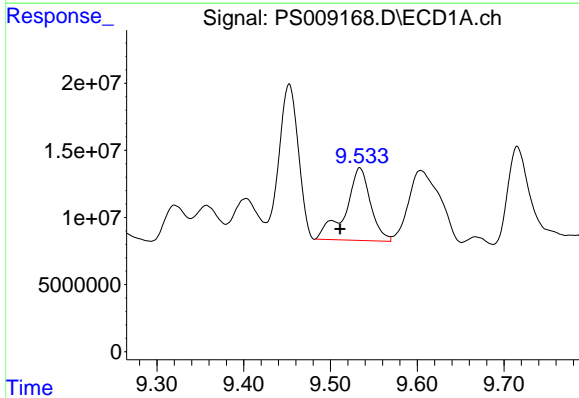


#11 2,4,5-TP (SILVEX)  
 R.T.: 0.000 min  
 Exp R.T.: 9.227 min  
 Response: 0  
 Conc: N.D.

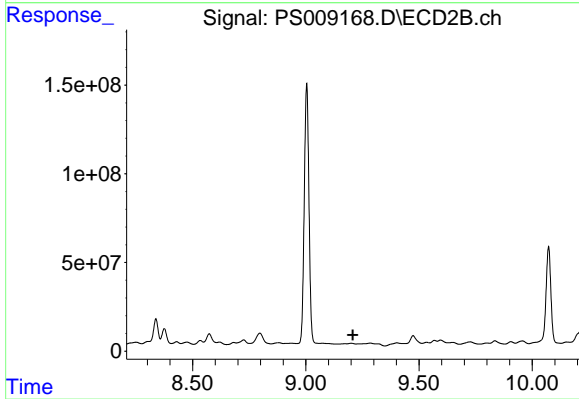
Instrument :  
 ECD\_S  
 ClientSampled :



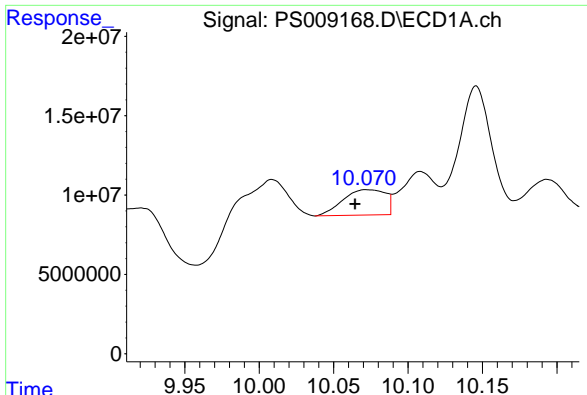
#11 2,4,5-TP (SILVEX)  
 R.T.: 8.797 min  
 Delta R.T.: -0.031 min  
 Response: 91719044  
 Conc: 16.93 ng/ml



#12 2,4,5-T  
 R.T.: 9.534 min  
 Delta R.T.: 0.023 min  
 Response: 108284776  
 Conc: 10.13 ng/ml

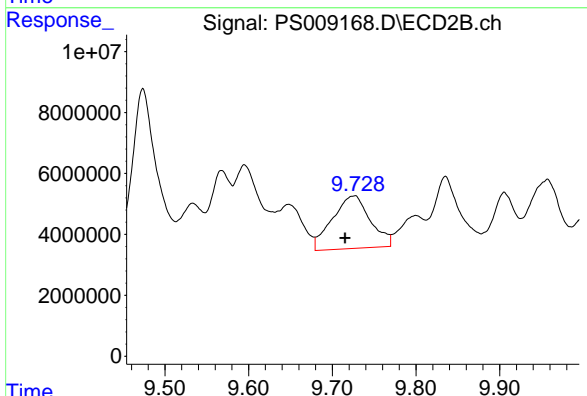


#12 2,4,5-T  
 R.T.: 0.000 min  
 Exp R.T.: 9.208 min  
 Response: 0  
 Conc: N.D.

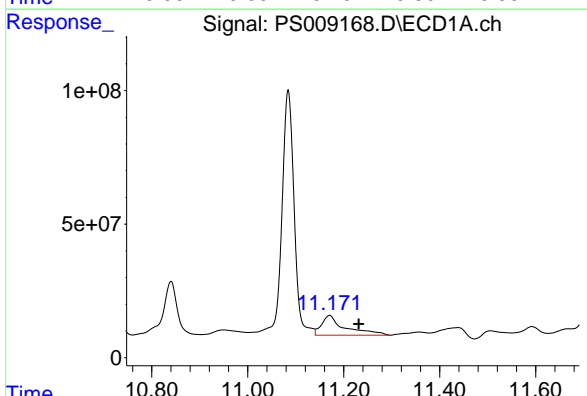


#13 2,4-DB  
 R.T.: 10.073 min  
 Delta R.T.: 0.008 min  
 Response: 31542181  
 Conc: 21.86 ng/ml

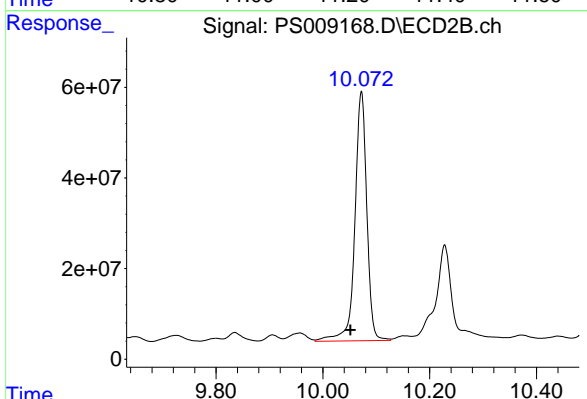
Instrument :  
 ECD\_S  
 ClientSampleId :



#13 2,4-DB  
 R.T.: 9.726 min  
 Delta R.T.: 0.010 min  
 Response: 54773632  
 Conc: 77.98 ng/ml

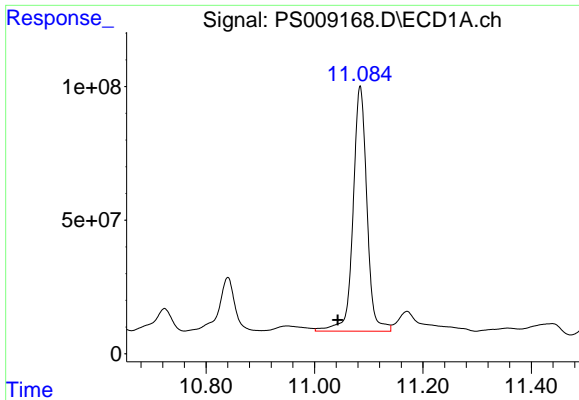


#14 DINOSEB  
 R.T.: 11.171 min  
 Delta R.T.: -0.061 min  
 Response: 251642844  
 Conc: 29.74 ng/ml



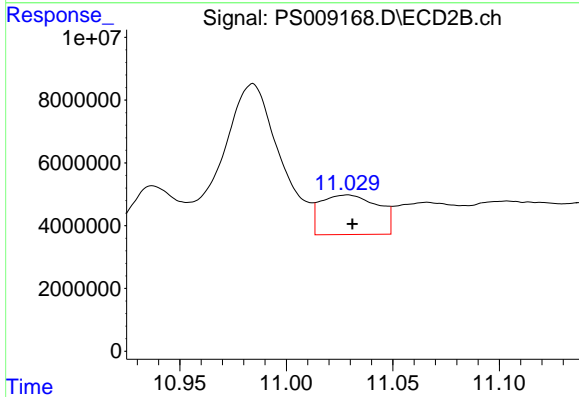
#14 DINOSEB  
 R.T.: 10.072 min  
 Delta R.T.: 0.021 min  
 Response: 852937780  
 Conc: 215.71 ng/ml



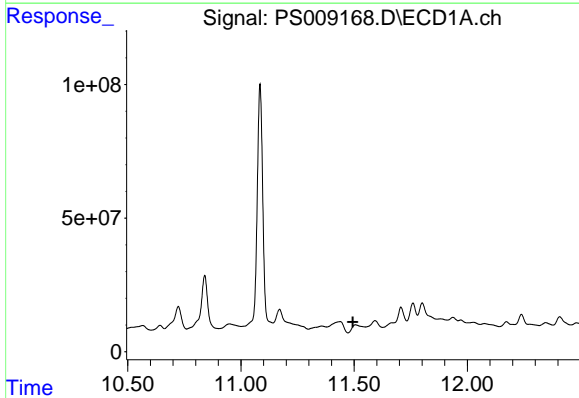


#15 Picloram  
 R.T.: 11.084 min  
 Delta R.T.: 0.041 min  
 Response: 1629636001  
 Conc: 119.03 ng/ml

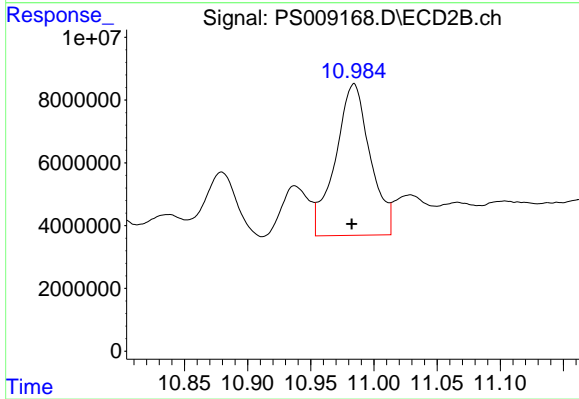
Instrument :  
 ECD\_S  
 ClientSampleId :



#15 Picloram  
 R.T.: 11.028 min  
 Delta R.T.: -0.003 min  
 Response: 23567279  
 Conc: 3.24 ng/ml



#16 DCPA  
 R.T.: 0.000 min  
 Exp R.T. : 11.495 min  
 Response: 0  
 Conc: N.D.



#16 DCPA  
 R.T.: 10.984 min  
 Delta R.T.: 0.002 min  
 Response: 92565463  
 Conc: 13.38 ng/ml