

Data Path : Z:\pestpcbsrv\HPCHEM1\ECD_S\Data\PS030620\
 Data File : PS009183.D
 Signal(s) : Signal #1: ECD1A.ch Signal #2: ECD2B.ch
 Acq On : 07 Mar 2020 04:21
 Operator : DD\AJ
 Sample : I.BLK
 Misc :
 ALS Vial : 2 Sample Multiplier: 1

Instrument :
 ECD_S
 ClientSampleId :

Integration File signal 1: autoint1.e
 Integration File signal 2: autoint2.e
 Quant Time: Mar 07 05:37:04 2020
 Quant Method : Z:\pestpcbsrv\HPCHEM1\ECD_S\Method\PS022020.M
 Quant Title : 8080.M
 QLast Update : Thu Feb 20 11:30:26 2020
 Response via : Initial Calibration
 Integrator: ChemStation

Volume Inj. : 2 µl
 Signal #1 Phase : Rtx-CLPesticides Signal #2 Phase: Rtx-CLPesticides2
 Signal #1 Info : 30M x 0.32mm x0.5 Signal #2 Info : 30M x 0.32mm x 0.25µm

Compound	RT#1	RT#2	Resp#1	Resp#2	ng/ml	ng/ml

System Monitoring Compounds						
4) S 2,4-DCAA	7.245	6.937	911.1E6	494.0E6	416.695	512.731

Target Compounds

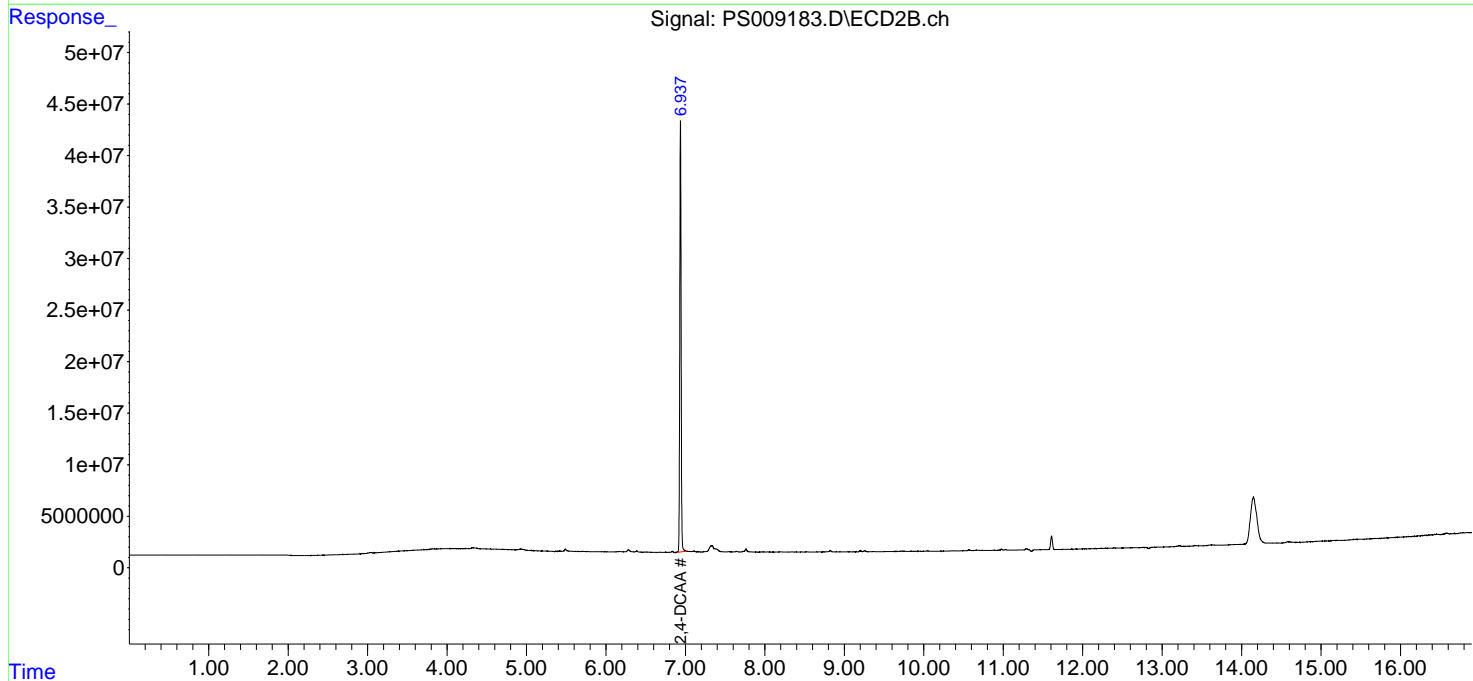
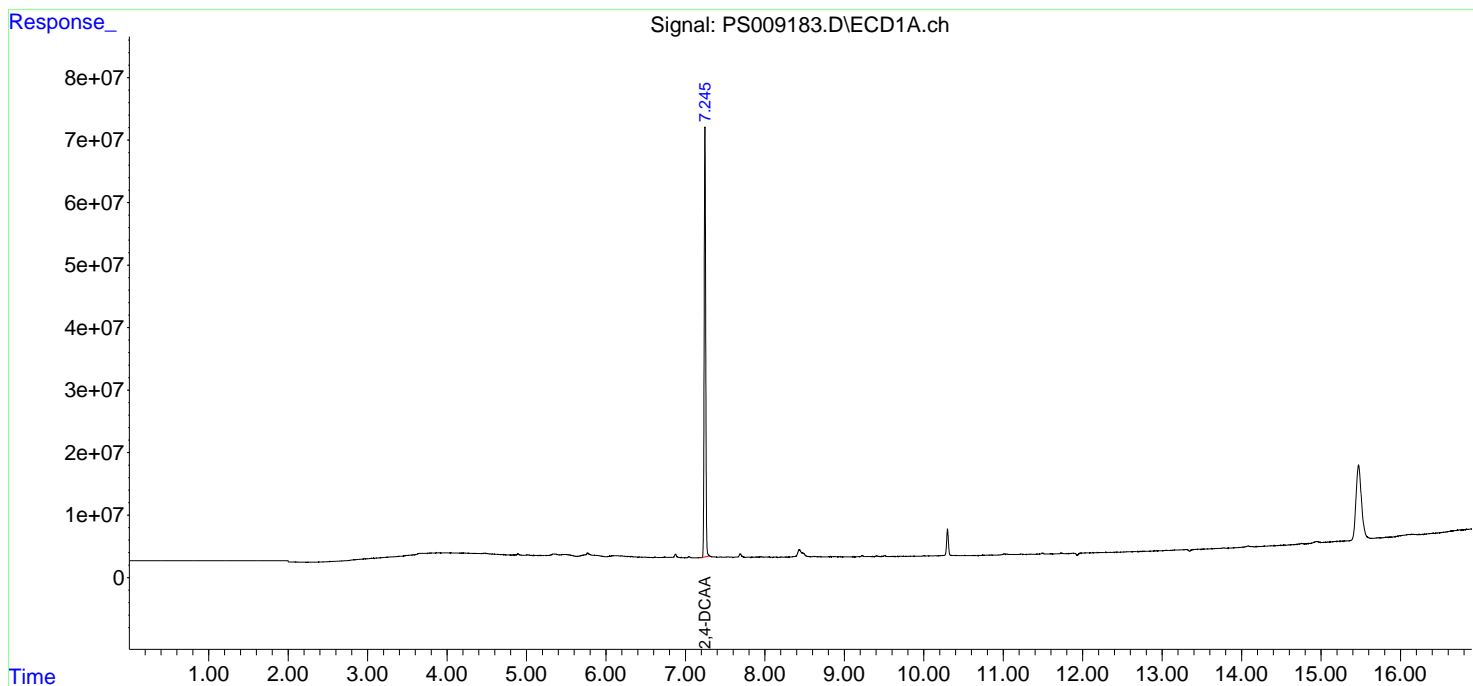
(f)=RT Delta > 1/2 Window (#)=Amounts differ by > 25% (m)=manual int.

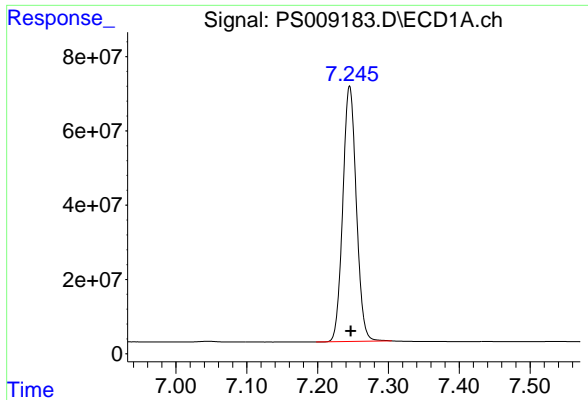
Data Path : Z:\pestpcbsrv\HPCHEM1\ECD_S\Data\PS030620\
Data File : PS009183.D
Signal(s) : Signal #1: ECD1A.ch Signal #2: ECD2B.ch
Acq On : 07 Mar 2020 04:21
Operator : DD\AJ
Sample : I.BLK
Misc :
ALS Vial : 2 Sample Multiplier: 1

Instrument :
ECD_S
ClientSampled :

Integration File signal 1: autoint1.e
Integration File signal 2: autoint2.e
Quant Time: Mar 07 05:37:04 2020
Quant Method : Z:\pestpcbsrv\HPCHEM1\ECD_S\Method\PS022020.M
Quant Title : 8080.M
QLast Update : Thu Feb 20 11:30:26 2020
Response via : Initial Calibration
Integrator: ChemStation

Volume Inj. : 2 µl
Signal #1 Phase : Rtx-CLPesticides Signal #2 Phase: Rtx-CLPesticides2
Signal #1 Info : 30M x 0.32mm x 0.5 Signal #2 Info : 30M x 0.32mm x 0.25µm





#4 2,4-DCAA

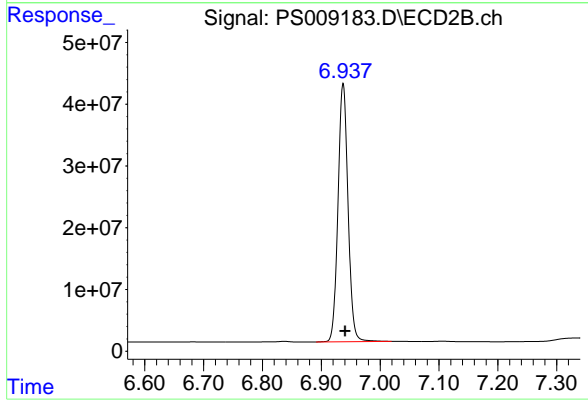
R.T.: 7.245 min

Delta R.T.: -0.002 min

Response: 911140948

Conc: 416.69 ng/ml

Instrument :
ECD_S
ClientSampleId :



#4 2,4-DCAA

R.T.: 6.937 min

Delta R.T.: -0.003 min

Response: 494045044

Conc: 512.73 ng/ml