

Data Path : Z:\pestpcbsrv\HPCHEM1\ECD_S\Data\PS030723\
 Data File : PS022323.D
 Signal(s) : Signal #1: ECD1A.ch Signal #2: ECD2B.ch
 Acq On : 07 Mar 2023 11:08
 Operator : AR\AJ
 Sample : 01770-01MSD
 Misc :
 ALS Vial : 7 Sample Multiplier: 1

Instrument :
 ECD_S
ClientSampleId :
 VNJ-223MSD

Manual Integrations
APPROVED

Reviewed By :Abdul Mirza 03/08/2023
 Supervised By :Ankita Jodhani 03/08/2023

Integration File signal 1: autoint1.e
 Integration File signal 2: autoint2.e
 Quant Time: Mar 07 19:34:02 2023
 Quant Method : Z:\pestpcbsrv\HPCHEM1\ECD_S\Method\PS022023.M
 Quant Title : 8080.M
 QLast Update : Mon Feb 20 13:26:02 2023
 Response via : Initial Calibration
 Integrator: ChemStation

Volume Inj. : 2 µl
 Signal #1 Phase : Rtx-CLPesticides Signal #2 Phase: Rtx-CLPesticides2
 Signal #1 Info : 30M x 0.32mm x0.5 Signal #2 Info : 30M x 0.32mm x 0.25µm

Compound	RT#1	RT#2	Resp#1	Resp#2	ng/ml	ng/ml

System Monitoring Compounds						
4) S 2,4-DCAA	6.295	6.720	979.5E6	876.4E6	395.186	417.555
Target Compounds						
1) T Dalapon	2.402	2.455	618.2E6	1469.9E6	194.999m	456.484m#
2) T 3,5-DICHL...	5.678	5.922	1323.1E6	1072.0E6	355.913	346.662
3) T 4-Nitroph...	6.139	6.347	484.0E6	478.1E6	380.349	358.020
5) T DICAMBA	6.433	6.877	3834.7E6	3411.4E6	369.557	353.005
6) T MCPP	6.582	6.973	244.3E6	236.3E6	32.013	30.955
7) T MCPA	6.704	7.183	352.2E6	406.7E6	33.823	39.898
8) T DICHLORPROP	7.016	7.499	868.5E6	866.1E6	321.594	352.301
9) T 2,4-D	7.218	7.787	1196.7E6	1129.6E6	364.976	390.091
10) T Pentachlo...	7.439	8.207	8459.5E6	7513.6E6	234.966	231.888
11) T 2,4,5-TP ...	7.965	8.570	4088.1E6	3653.7E6	265.072	271.629
12) T 2,4,5-T	8.224	8.946	5136.3E6	4111.5E6	296.055	341.852
13) T 2,4-DB	8.732	9.450	808.3E6	535.0E6	298.151	322.235m
14) T DINOSEB	9.774	9.773	196.0E6	291.1E6	14.261m	30.514m#
15) T Picloram	9.610	10.742	9240.4E6	7219.1E6	375.109	368.209
16) T DCPA	10.040	10.699	9911.0E6	7224.0E6	465.339	461.750

(f)=RT Delta > 1/2 Window (#)=Amounts differ by > 25% (m)=manual int.

Data Path : Z:\pestpcbsrv\HPCHEM1\ECD_S\Data\PS030723\
 Data File : PS022323.D
 Signal(s) : Signal #1: ECD1A.ch Signal #2: ECD2B.ch
 Acq On : 07 Mar 2023 11:08
 Operator : AR\AJ
 Sample : 01770-01MSD
 Misc :
 ALS Vial : 7 Sample Multiplier: 1

Instrument :

ECD_S

ClientSampleId :

VNJ-223MSD

Manual Integrations

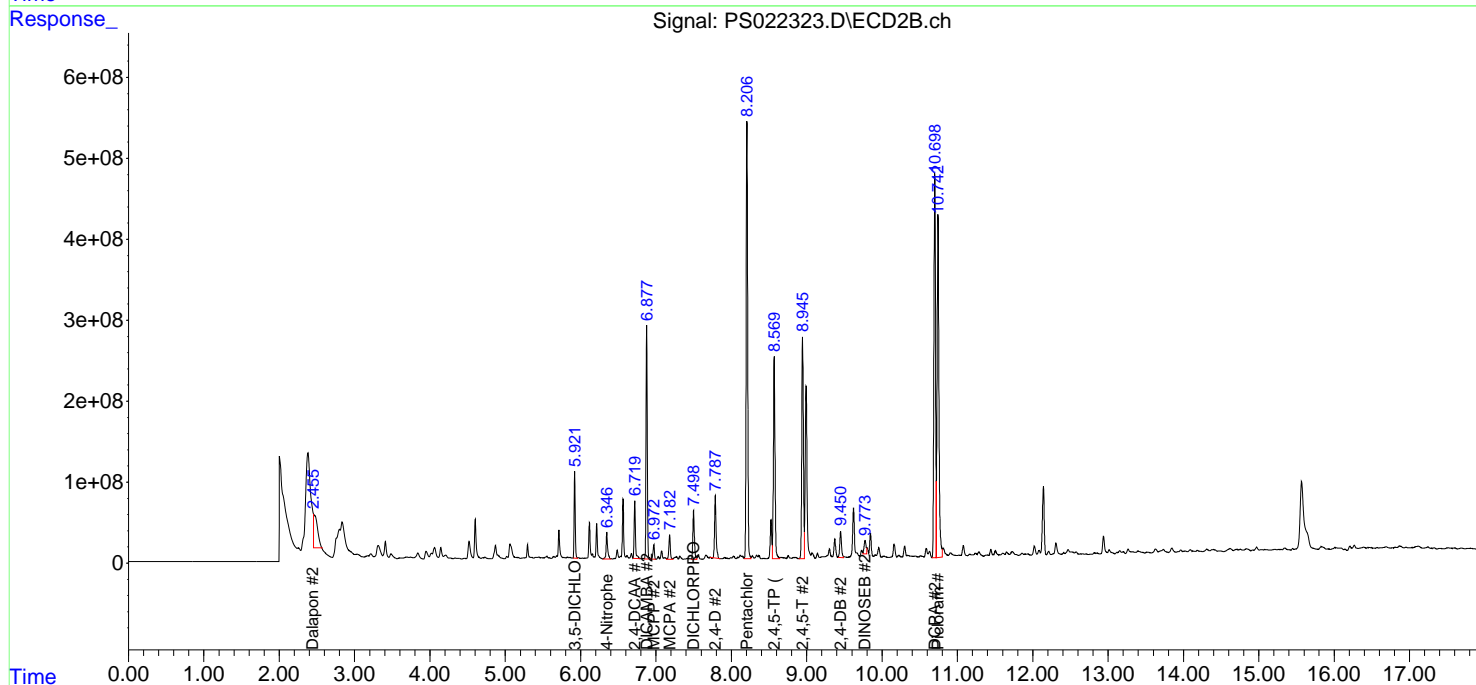
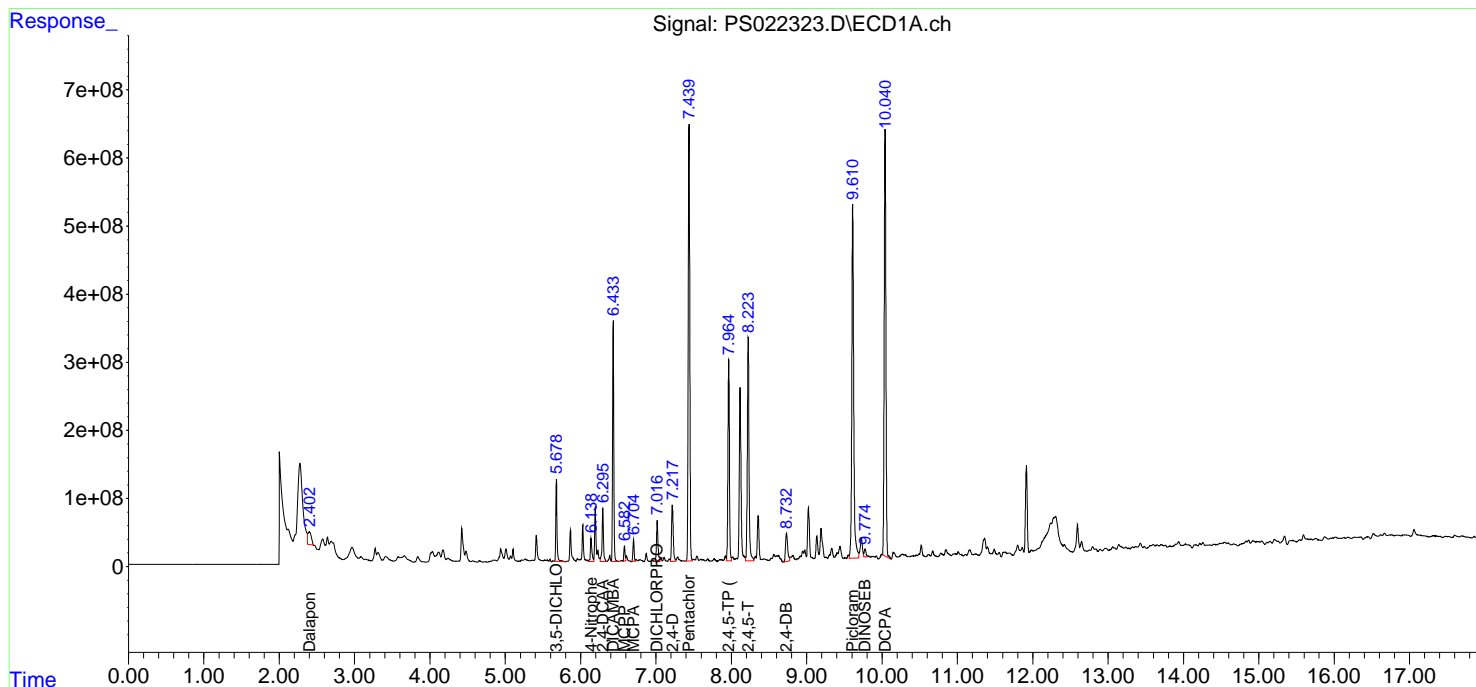
APPROVED

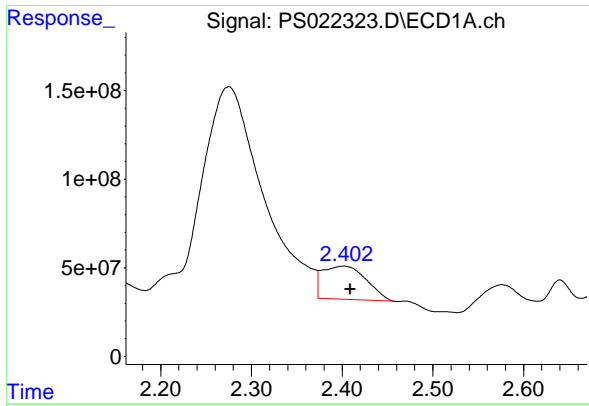
Reviewed By :Abdul Mirza 03/08/2023

Supervised By :Ankita Jodhani 03/08/2023

Integration File signal 1: autoint1.e
 Integration File signal 2: autoint2.e
 Quant Time: Mar 07 19:34:02 2023
 Quant Method : Z:\pestpcbsrv\HPCHEM1\ECD_S\Method\PS022023.M
 Quant Title : 8080.M
 QLast Update : Mon Feb 20 13:26:02 2023
 Response via : Initial Calibration
 Integrator: ChemStation

Volume Inj. : 2 µl
 Signal #1 Phase : Rtx-CLPesticides Signal #2 Phase: Rtx-CLPesticides2
 Signal #1 Info : 30M x 0.32mm x0.5 Signal #2 Info : 30M x 0.32mm x 0.25µm





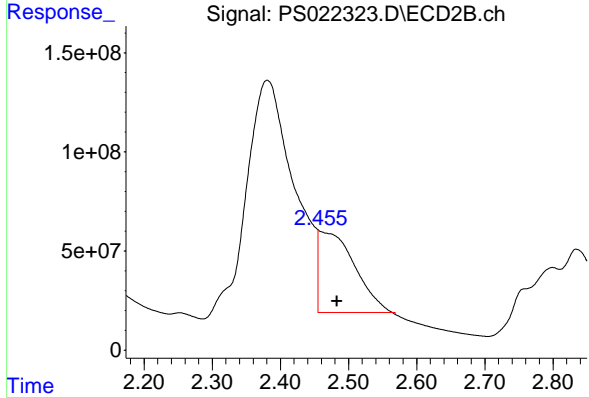
#1 Dalapon

R.T.: 2.402 min
 Delta R.T.: -0.007 min
 Response: 618199914
 Conc: 195.00 ng/ml

Instrument : ECD_S
 Client SampleId : VNJ-223MSD

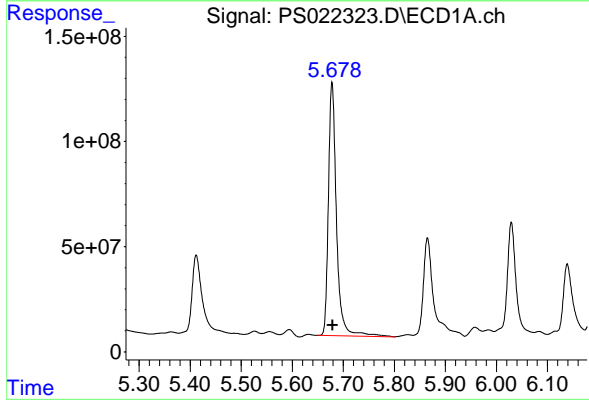
Manual Integrations
 APPROVED

Reviewed By :Abdul Mirza 03/08/2023
 Supervised By :Ankita Jodhani 03/08/2023



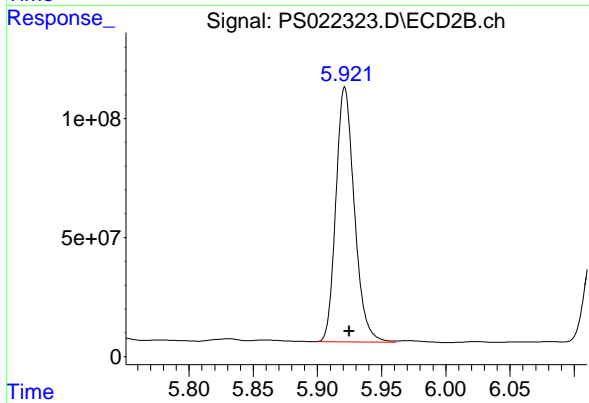
#1 Dalapon

R.T.: 2.455 min
 Delta R.T.: -0.028 min
 Response: 1469949222
 Conc: 456.48 ng/ml m



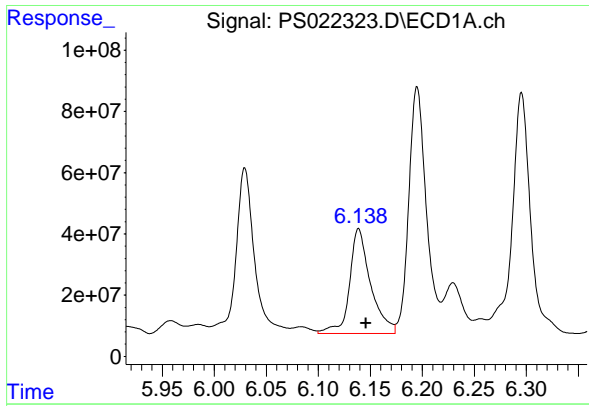
#2 3,5-DICHLOROBENZOIC ACID

R.T.: 5.678 min
 Delta R.T.: -0.002 min
 Response: 1323069209
 Conc: 355.91 ng/ml



#2 3,5-DICHLOROBENZOIC ACID

R.T.: 5.922 min
 Delta R.T.: -0.003 min
 Response: 1071992179
 Conc: 346.66 ng/ml



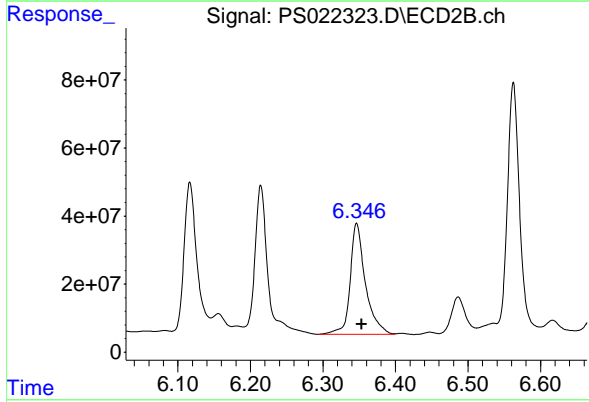
#3 4-Nitrophenol

R.T.: 6.139 min
 Delta R.T.: -0.007 min
 Response: 484001034
 Conc: 380.35 ng/ml

Instrument :
 ECD_S
 ClientSampleId :
 VNJ-223MSD

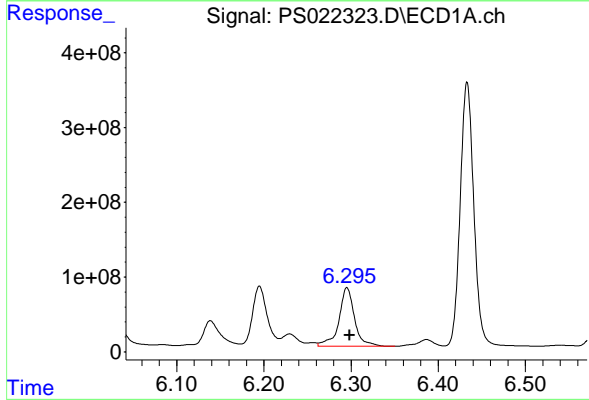
Manual Integrations
 APPROVED

Reviewed By :Abdul Mirza 03/08/2023
 Supervised By :Ankita Jodhani 03/08/2023



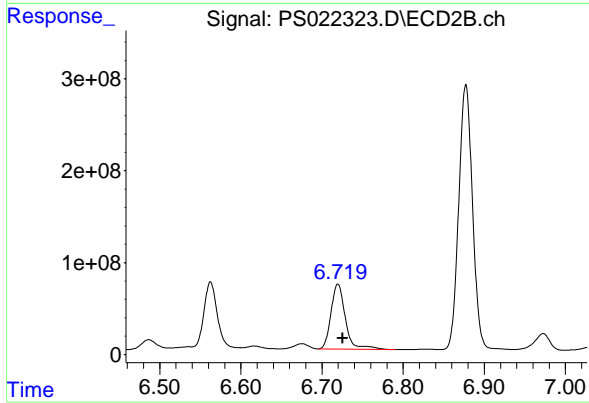
#3 4-Nitrophenol

R.T.: 6.347 min
 Delta R.T.: -0.007 min
 Response: 478149787
 Conc: 358.02 ng/ml



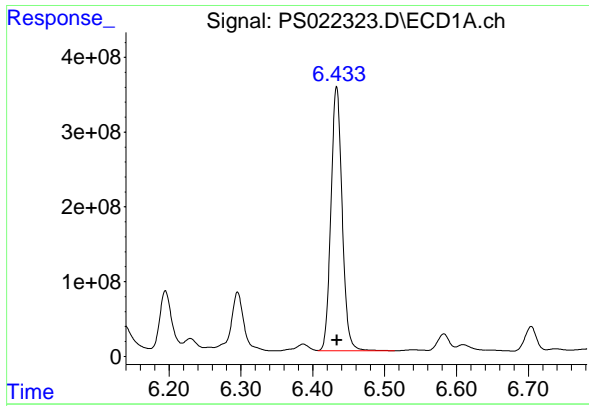
#4 2,4-DCAA

R.T.: 6.295 min
 Delta R.T.: -0.003 min
 Response: 979542651
 Conc: 395.19 ng/ml



#4 2,4-DCAA

R.T.: 6.720 min
 Delta R.T.: -0.006 min
 Response: 876431734
 Conc: 417.55 ng/ml



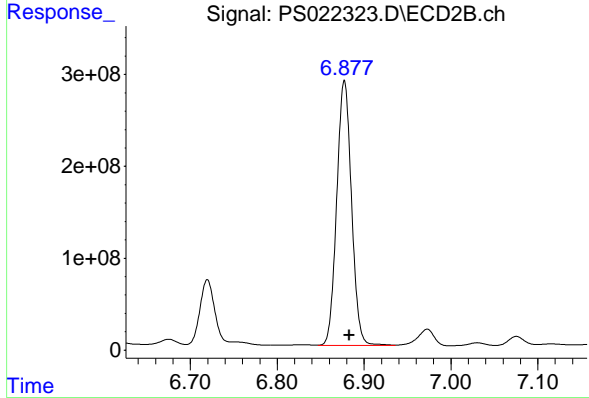
#5 DICAMBA

R.T.: 6.433 min
 Delta R.T.: 0.000 min
 Response: 3834736031
 Conc: 369.56 ng/ml

Instrument : ECD_S
 Client Sample Id : VNJ-223MSD

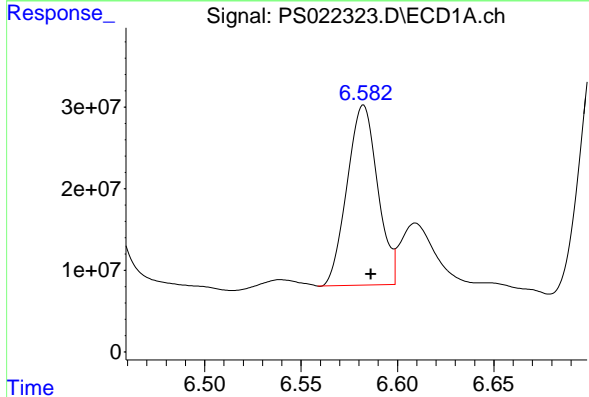
Manual Integrations
 APPROVED

Reviewed By :Abdul Mirza 03/08/2023
 Supervised By :Ankita Jodhani 03/08/2023



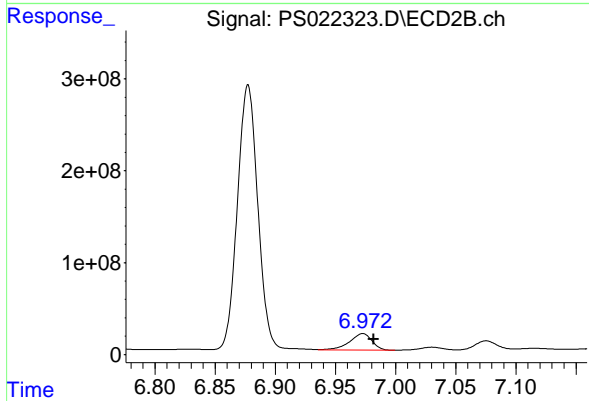
#5 DICAMBA

R.T.: 6.877 min
 Delta R.T.: -0.006 min
 Response: 3411431317
 Conc: 353.01 ng/ml



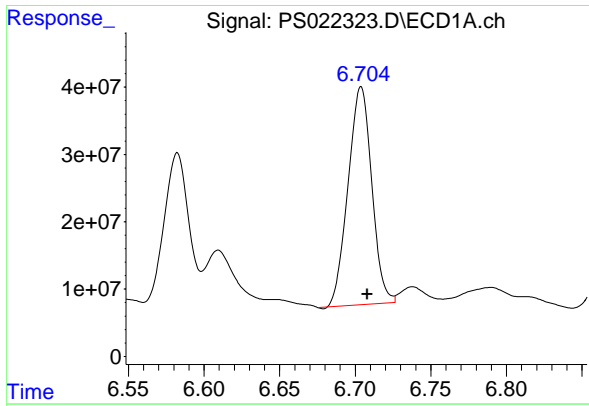
#6 MCPP

R.T.: 6.582 min
 Delta R.T.: -0.004 min
 Response: 244264857
 Conc: 32.01 ug/ml



#6 MCPP

R.T.: 6.973 min
 Delta R.T.: -0.009 min
 Response: 236328260
 Conc: 30.95 ug/ml



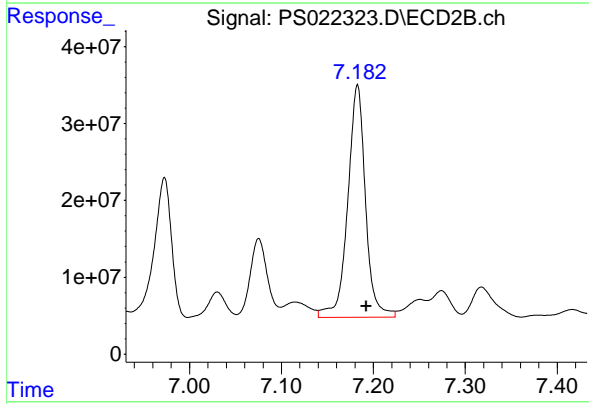
#7 MCPA

R.T.: 6.704 min
 Delta R.T.: -0.004 min
 Response: 352236346
 Conc: 33.82 ug/ml

Instrument :
 ECD_S
 ClientSampleId :
 VNJ-223MSD

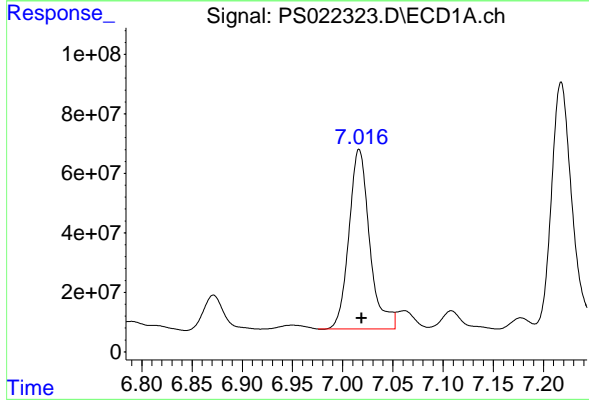
Manual Integrations
 APPROVED

Reviewed By :Abdul Mirza 03/08/2023
 Supervised By :Ankita Jodhani 03/08/2023



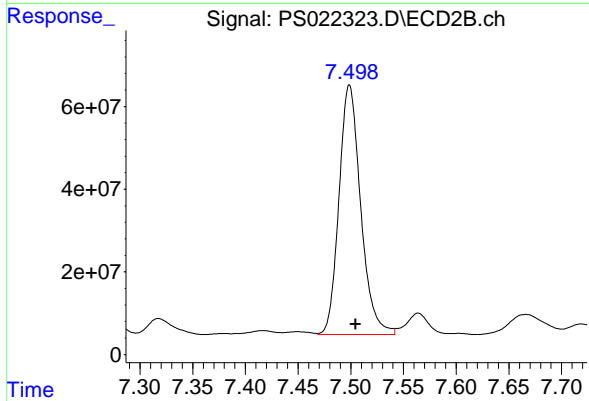
#7 MCPA

R.T.: 7.183 min
 Delta R.T.: -0.010 min
 Response: 406665039
 Conc: 39.90 ug/ml



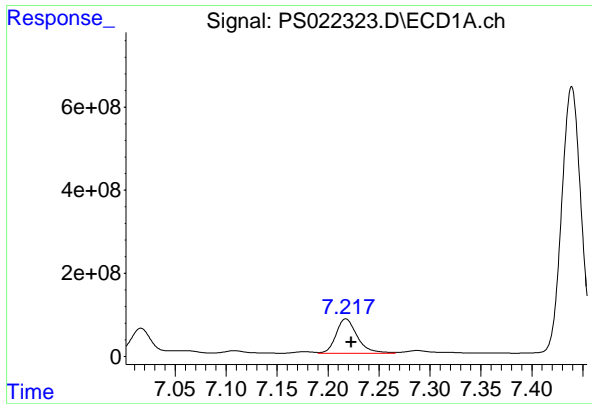
#8 DICHLORPROP

R.T.: 7.016 min
 Delta R.T.: -0.002 min
 Response: 868503152
 Conc: 321.59 ng/ml



#8 DICHLORPROP

R.T.: 7.499 min
 Delta R.T.: -0.006 min
 Response: 866106014
 Conc: 352.30 ng/ml



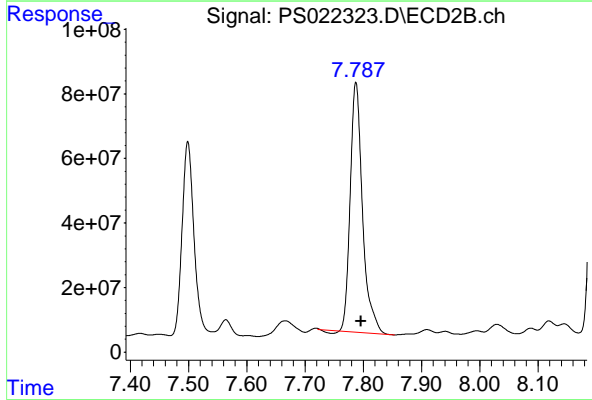
#9 2,4-D

R.T.: 7.218 min
 Delta R.T.: -0.005 min
 Response: 1196656673
 Conc: 364.98 ng/ml

Instrument : ECD_S
 Client Sample Id : VNJ-223MSD

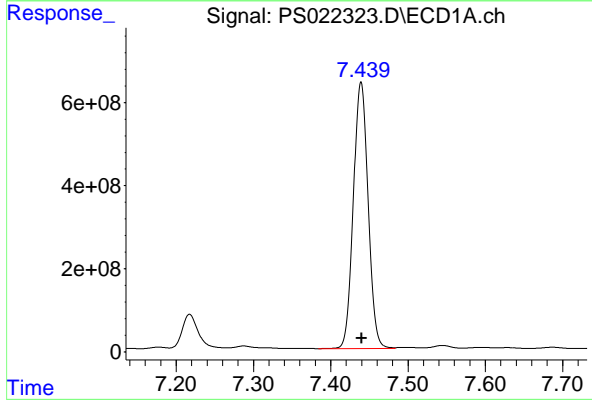
Manual Integrations
 APPROVED

Reviewed By :Abdul Mirza 03/08/2023
 Supervised By :Ankita Jodhani 03/08/2023



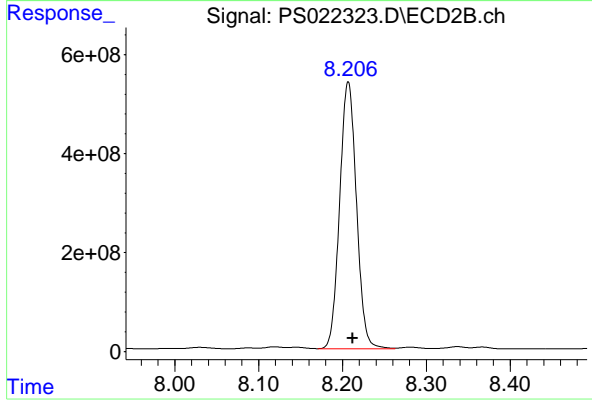
#9 2,4-D

R.T.: 7.787 min
 Delta R.T.: -0.009 min
 Response: 1129594077
 Conc: 390.09 ng/ml



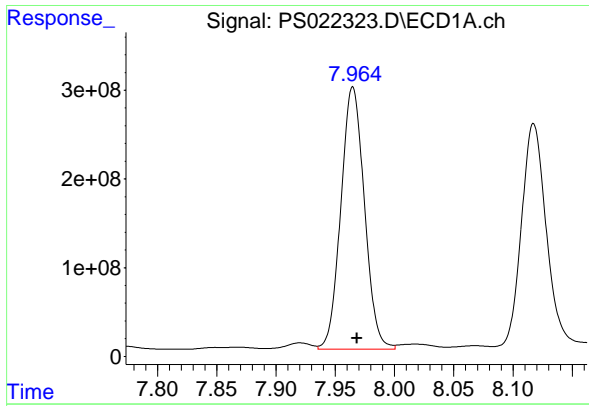
#10 Pentachlorophenol

R.T.: 7.439 min
 Delta R.T.: 0.000 min
 Response: 8459454041
 Conc: 234.97 ng/ml



#10 Pentachlorophenol

R.T.: 8.207 min
 Delta R.T.: -0.005 min
 Response: 7513562724
 Conc: 231.89 ng/ml



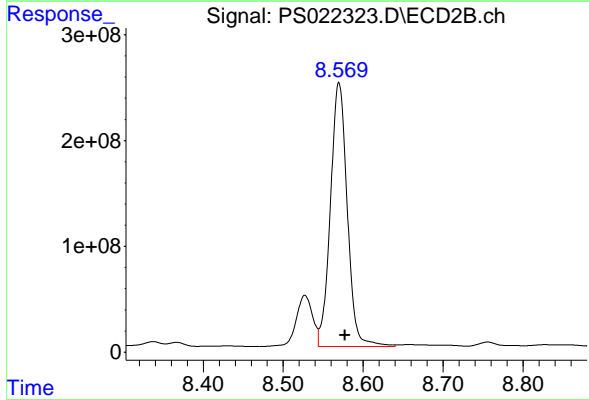
#11 2,4,5-TP (SILVEX)

R.T.: 7.965 min
 Delta R.T.: -0.004 min
 Response: 4088054747
 Conc: 265.07 ng/ml

Instrument :
 ECD_S
 ClientSampleId :
 VNJ-223MSD

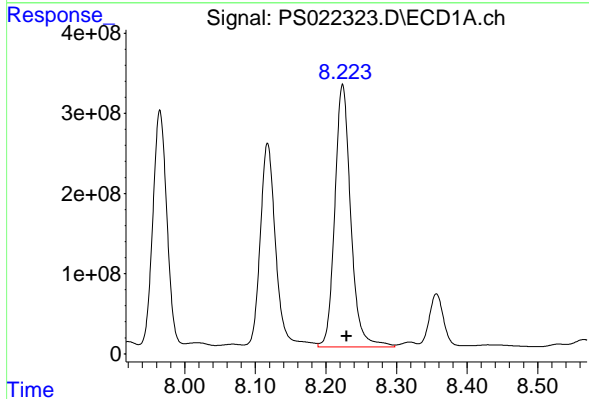
Manual Integrations
 APPROVED

Reviewed By :Abdul Mirza 03/08/2023
 Supervised By :Ankita Jodhani 03/08/2023



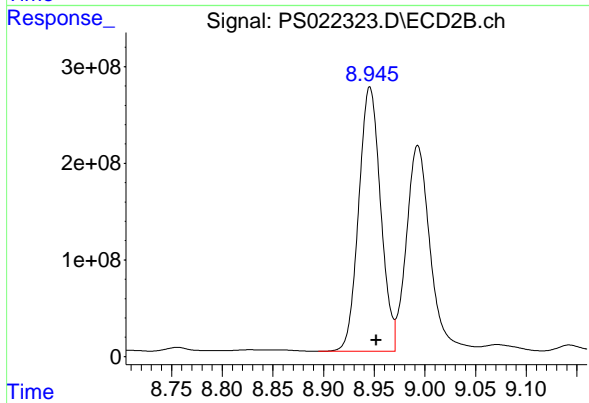
#11 2,4,5-TP (SILVEX)

R.T.: 8.570 min
 Delta R.T.: -0.007 min
 Response: 3653699989
 Conc: 271.63 ng/ml



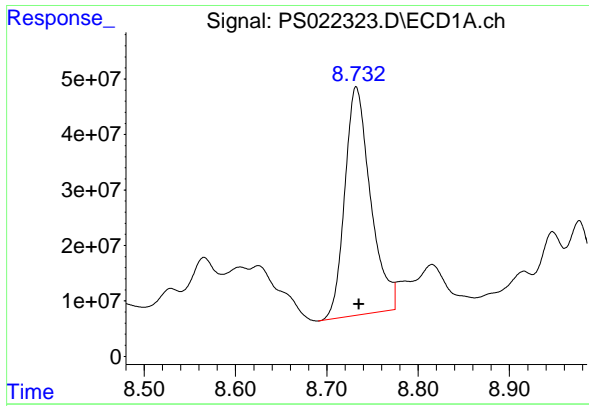
#12 2,4,5-T

R.T.: 8.224 min
 Delta R.T.: -0.006 min
 Response: 5136281496
 Conc: 296.05 ng/ml



#12 2,4,5-T

R.T.: 8.946 min
 Delta R.T.: -0.006 min
 Response: 4111471496
 Conc: 341.85 ng/ml



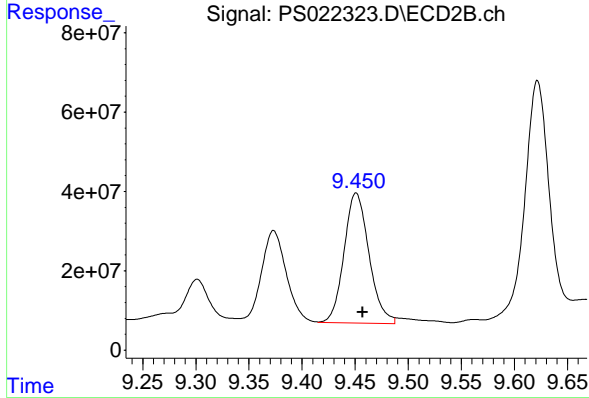
#13 2,4-DB

R.T.: 8.732 min
 Delta R.T.: -0.003 min
 Response: 808266589
 Conc: 298.15 ng/ml

Instrument : ECD_S
 Client Sample Id : VNJ-223MSD

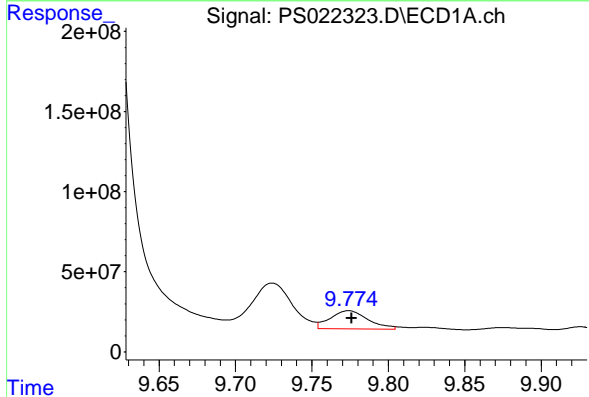
Manual Integrations
 APPROVED

Reviewed By :Abdul Mirza 03/08/2023
 Supervised By :Ankita Jodhani 03/08/2023



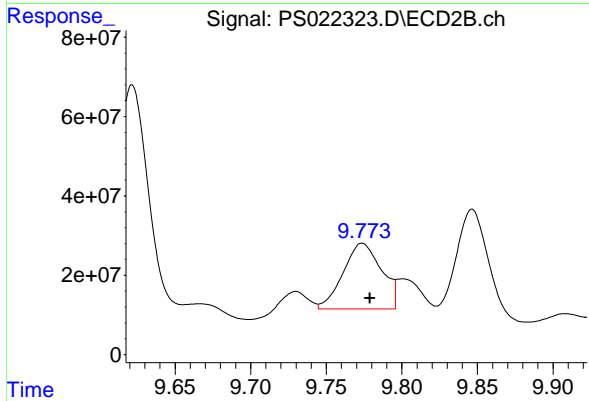
#13 2,4-DB

R.T.: 9.450 min
 Delta R.T.: -0.006 min
 Response: 534994475
 Conc: 322.23 ng/ml m



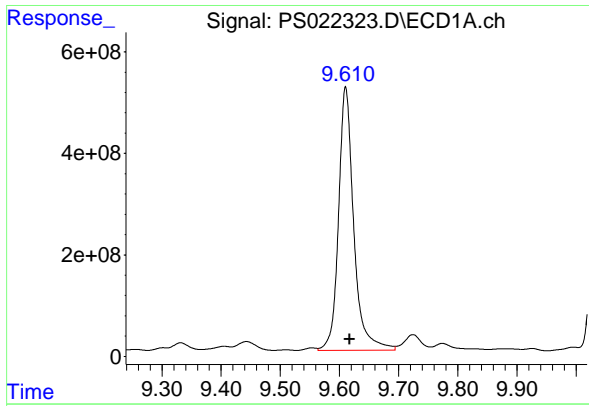
#14 DINOSEB

R.T.: 9.774 min
 Delta R.T.: -0.002 min
 Response: 195983443
 Conc: 14.26 ng/ml m



#14 DINOSEB

R.T.: 9.773 min
 Delta R.T.: -0.006 min
 Response: 291131797
 Conc: 30.51 ng/ml m



#15 Picloram

R.T.: 9.610 min
 Delta R.T.: -0.007 min
 Response: 9240442752
 Conc: 375.11 ng/ml

Instrument :

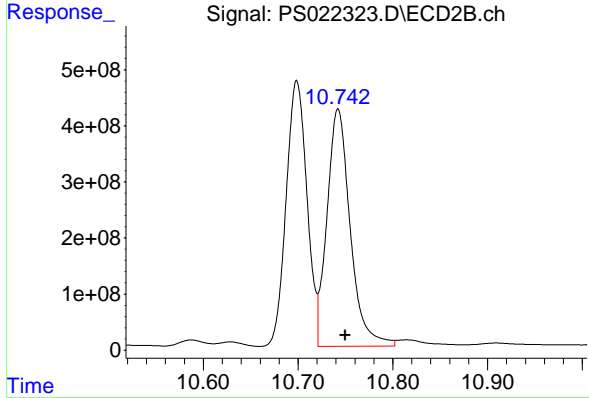
ECD_S

Client Sample Id :

VNJ-223MSD

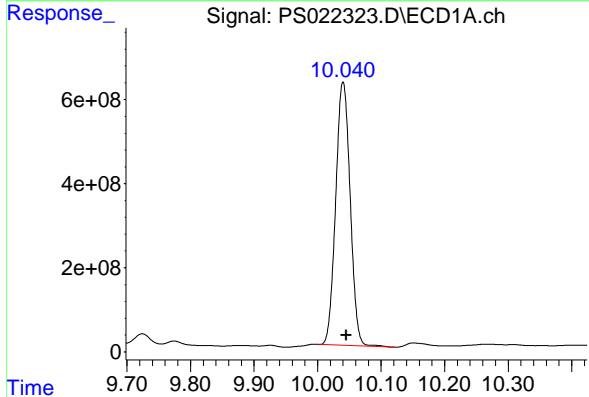
Manual Integrations
 APPROVED

Reviewed By :Abdul Mirza 03/08/2023
 Supervised By :Ankita Jodhani 03/08/2023



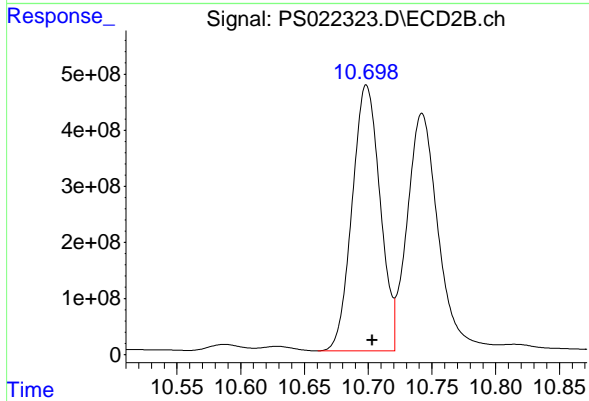
#15 Picloram

R.T.: 10.742 min
 Delta R.T.: -0.008 min
 Response: 7219098498
 Conc: 368.21 ng/ml



#16 DCPA

R.T.: 10.040 min
 Delta R.T.: -0.005 min
 Response: 9911024531
 Conc: 465.34 ng/ml



#16 DCPA

R.T.: 10.698 min
 Delta R.T.: -0.005 min
 Response: 7224009138
 Conc: 461.75 ng/ml