

Data Path : Z:\pestpcbsrv\HPCHEM1\ECD_S\Data\PS030822\
 Data File : PS018517.D
 Signal(s) : Signal #1: ECD1A.ch Signal #2: ECD2B.ch
 Acq On : 08 Mar 2022 15:09
 Operator : AJ\MA
 Sample : I.BLK
 Misc :
 ALS Vial : 2 Sample Multiplier: 1

Instrument :
 ECD_S
 ClientSampleId :
 I.BLK

Integration File signal 1: autoint1.e
 Integration File signal 2: autoint2.e
 Quant Time: Mar 08 23:56:37 2022
 Quant Method : Z:\pestpcbsrv\HPCHEM1\ECD_S\Method\PS022122.M
 Quant Title : 8080.M
 QLast Update : Tue Feb 22 00:27:26 2022
 Response via : Initial Calibration
 Integrator: ChemStation

Volume Inj. : 2 µl
 Signal #1 Phase : Rtx-CLPesticides Signal #2 Phase: Rtx-CLPesticides2
 Signal #1 Info : 30M x 0.32mm x0.5 Signal #2 Info : 30M x 0.32mm x 0.25µm

| | Compound | RT#1 | RT#2 | Resp#1 | Resp#2 | ng/ml | ng/ml |
|-----------------------------|--------------|--------|---------|----------|----------|---------|-----------|
| ----- | | | | | | | |
| System Monitoring Compounds | | | | | | | |
| 4) S | 2,4-DCAA | 7.032 | 6.638 | 634.8E6 | 352.0E6 | 381.476 | 528.302 # |
| Target Compounds | | | | | | | |
| 5) T | DICAMBA | 7.220 | 6.795 | 5015218 | 5414754 | <MDL | 1.928 # |
| 9) T | 2,4-D | 8.192f | 7.741f | 41014389 | 2480153 | 20.106 | 2.649 # |
| 10) T | Pentachlo... | 8.431 | 8.108 | 15922541 | 7891671 | <MDL | <MDL # |
| 11) T | 2,4,5-TP ... | 8.980 | 8.432 | 13137610 | 40522542 | 1.380 | 9.815 # |
| 12) T | 2,4,5-T | 9.221 | 8.881 | 61824857 | 8720731 | 6.146 | 2.215 # |
| 13) T | 2,4-DB | 0.000 | 9.276f | 0 | 105.2E6 | N.D. | 194.659 |
| 14) T | DINOSEB | 10.940 | 9.667 | 67926554 | 5512153 | 8.743 | 1.896 # |
| 15) T | Picloram | 10.769 | 10.693f | 8103158 | 146.4E6 | <MDL | 25.313 # |
| 16) T | DCPA | 11.212 | 10.585 | 11873979 | 9829000 | <MDL | 1.980 # |

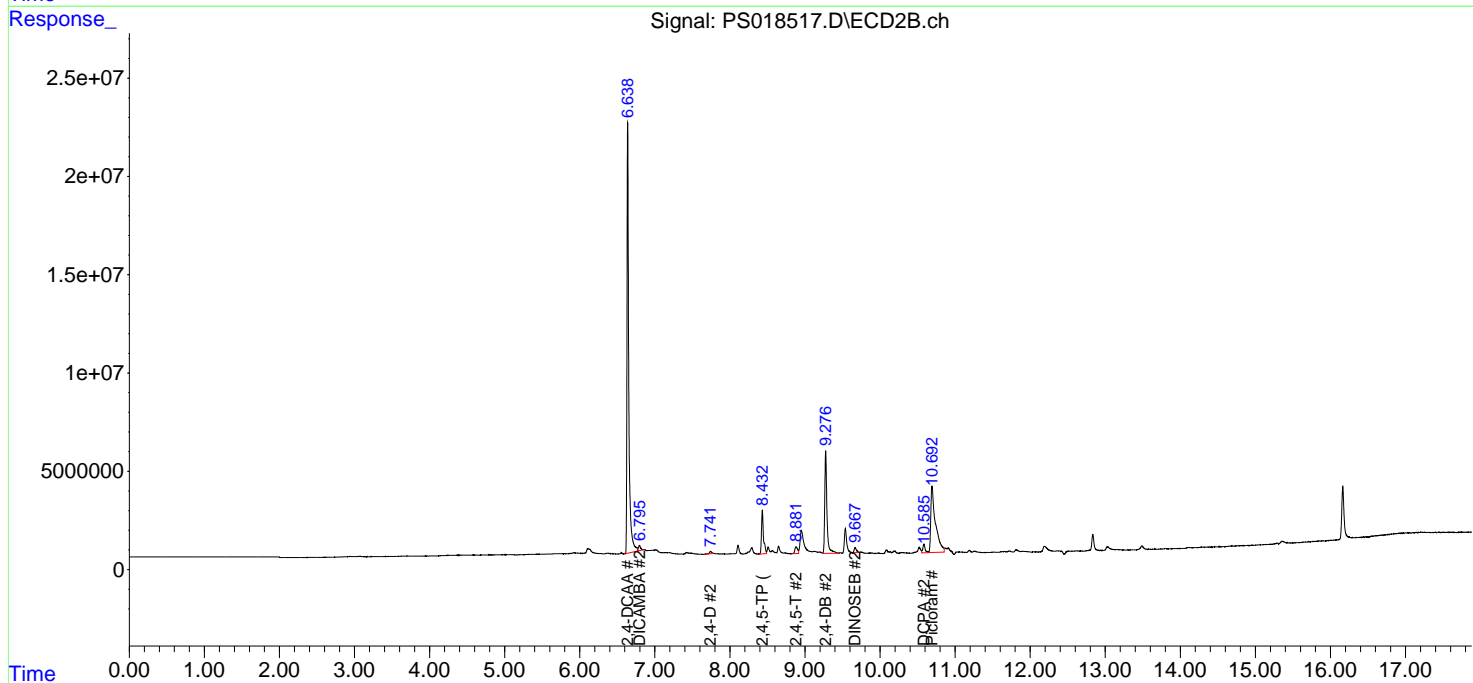
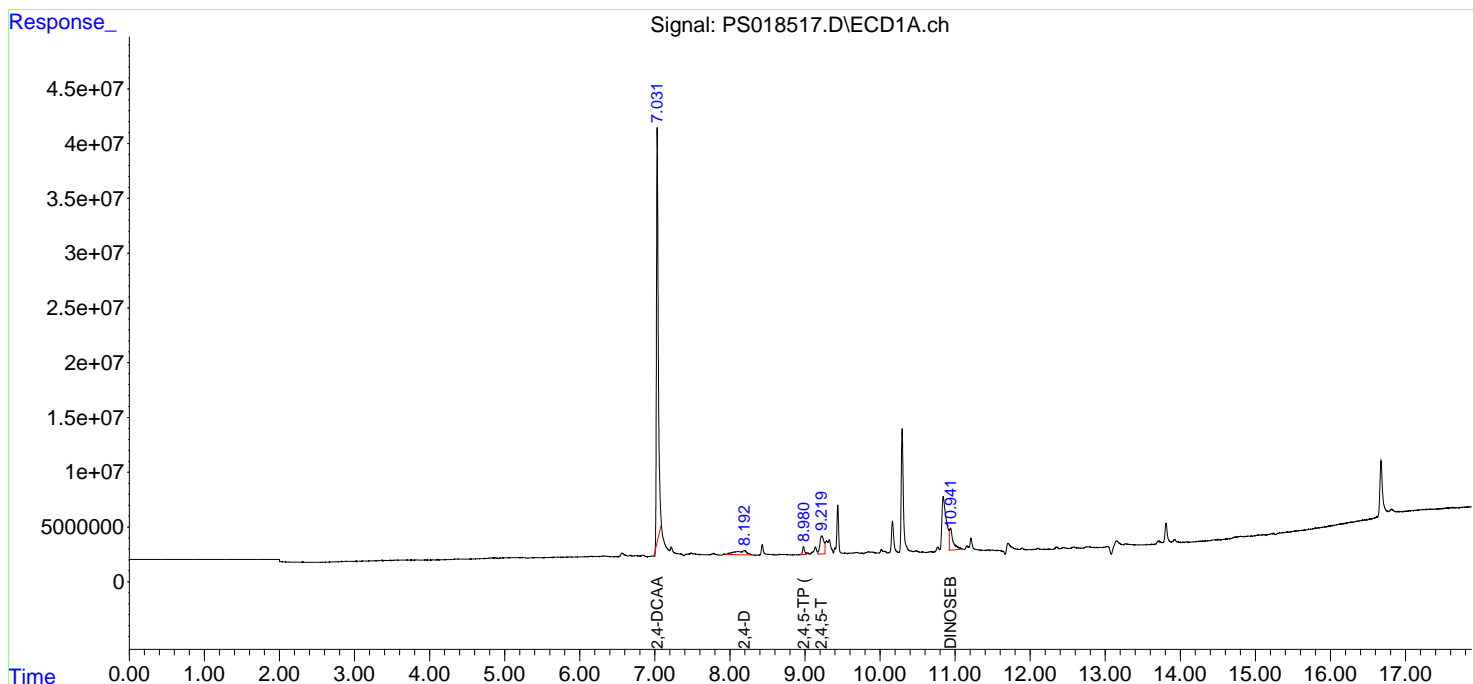
(f)=RT Delta > 1/2 Window (#)=Amounts differ by > 25% (m)=manual int.

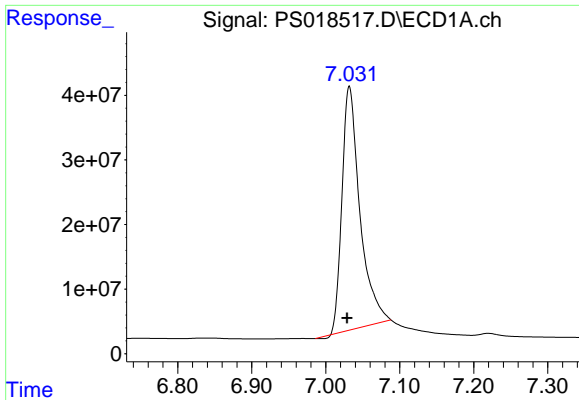
Data Path : Z:\pestpcbsrv\HPCHEM1\ECD_S\Data\PS030822\
 Data File : PS018517.D
 Signal(s) : Signal #1: ECD1A.ch Signal #2: ECD2B.ch
 Acq On : 08 Mar 2022 15:09
 Operator : AJ\MA
 Sample : I.BLK
 Misc :
 ALS Vial : 2 Sample Multiplier: 1

Instrument :
 ECD_S
 ClientSampleId :
 I.BLK

Integration File signal 1: autoint1.e
 Integration File signal 2: autoint2.e
 Quant Time: Mar 08 23:56:37 2022
 Quant Method : Z:\pestpcbsrv\HPCHEM1\ECD_S\Method\PS022122.M
 Quant Title : 8080.M
 QLast Update : Tue Feb 22 00:27:26 2022
 Response via : Initial Calibration
 Integrator: ChemStation

Volume Inj. : 2 µl
 Signal #1 Phase : Rtx-CLPesticides Signal #2 Phase: Rtx-CLPesticides2
 Signal #1 Info : 30M x 0.32mm x0.5 Signal #2 Info : 30M x 0.32mm x 0.25µm

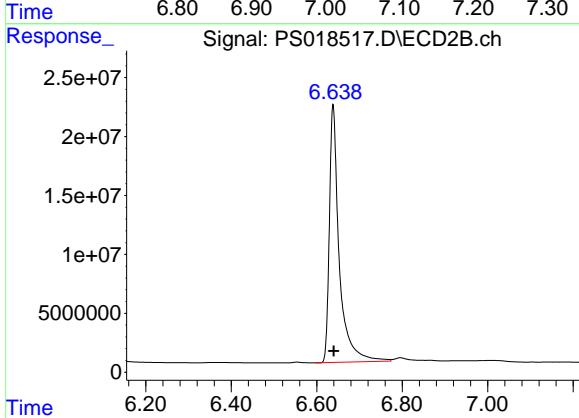




#4 2,4-DCAA

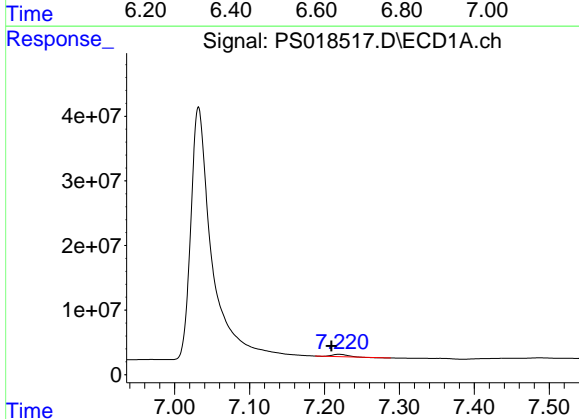
R.T.: 7.032 min
 Delta R.T.: 0.003 min
 Response: 634794905
 Conc: 381.48 ng/ml

Instrument :
 ECD_S
 ClientSampleId :
 I.BLK



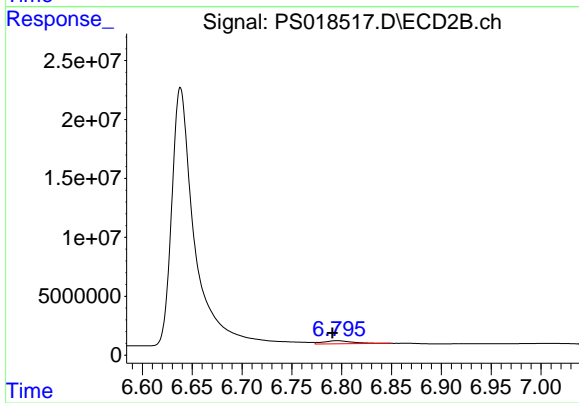
#4 2,4-DCAA

R.T.: 6.638 min
 Delta R.T.: -0.002 min
 Response: 352029990
 Conc: 528.30 ng/ml



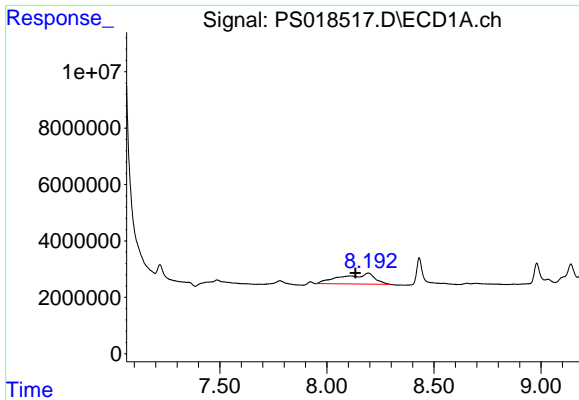
#5 DICAMBA

R.T.: 7.220 min
 Delta R.T.: 0.010 min
 Response: 5015218
 Conc: N.D.



#5 DICAMBA

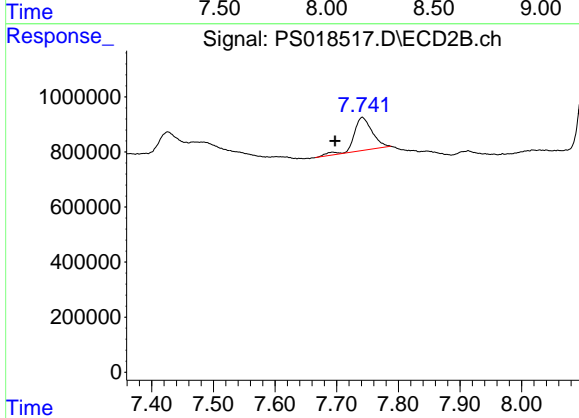
R.T.: 6.795 min
 Delta R.T.: 0.004 min
 Response: 5414754
 Conc: 1.93 ng/ml



#9 2,4-D

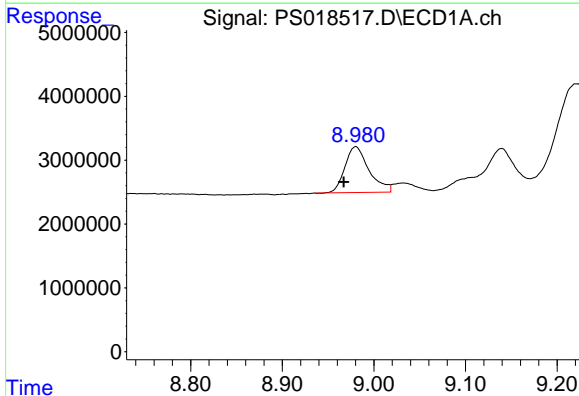
R.T.: 8.192 min
 Delta R.T.: 0.060 min
 Response: 41014389
 Conc: 20.11 ng/ml

Instrument :
 ECD_S
 ClientSampleId :
 I.BLK



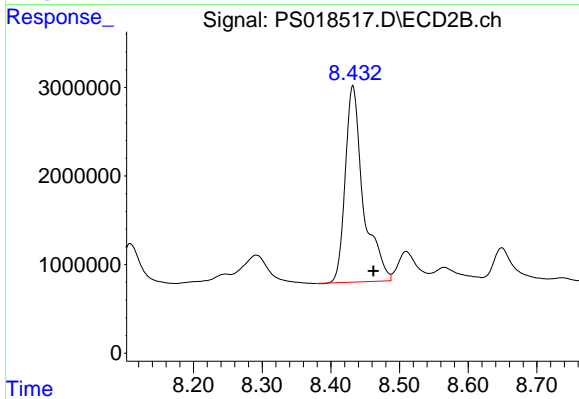
#9 2,4-D

R.T.: 7.741 min
 Delta R.T.: 0.044 min
 Response: 2480153
 Conc: 2.65 ng/ml



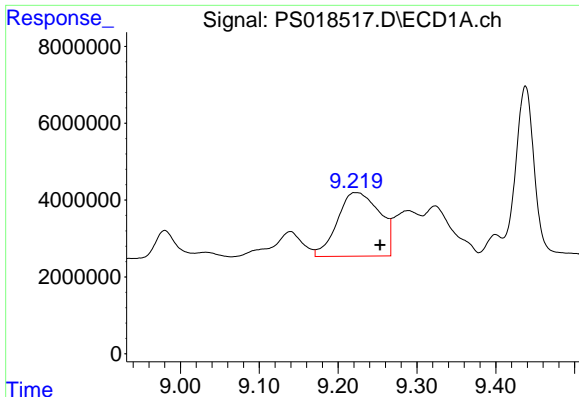
#11 2,4,5-TP (SILVEX)

R.T.: 8.980 min
 Delta R.T.: 0.013 min
 Response: 13137610
 Conc: 1.38 ng/ml



#11 2,4,5-TP (SILVEX)

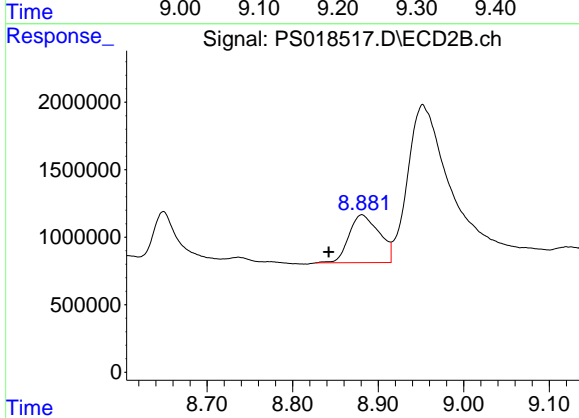
R.T.: 8.432 min
 Delta R.T.: -0.030 min
 Response: 40522542
 Conc: 9.82 ng/ml



#12 2,4,5-T

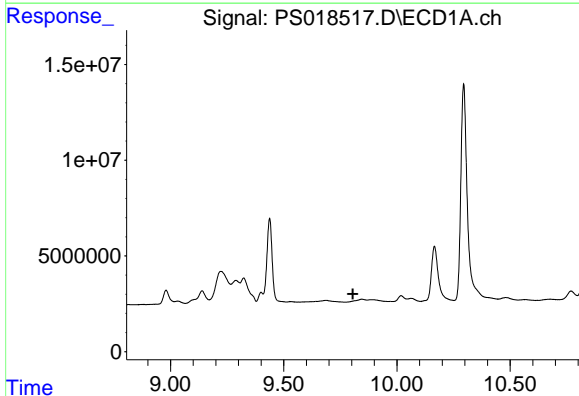
R.T.: 9.221 min
 Delta R.T.: -0.032 min
 Response: 61824857
 Conc: 6.15 ng/ml

Instrument :
 ECD_S
 ClientSampleId :
 I.BLK



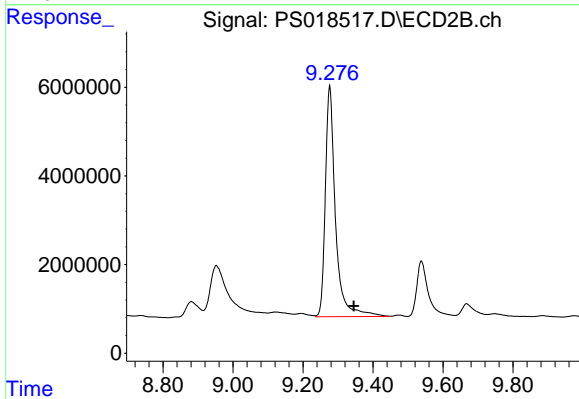
#12 2,4,5-T

R.T.: 8.881 min
 Delta R.T.: 0.039 min
 Response: 8720731
 Conc: 2.22 ng/ml



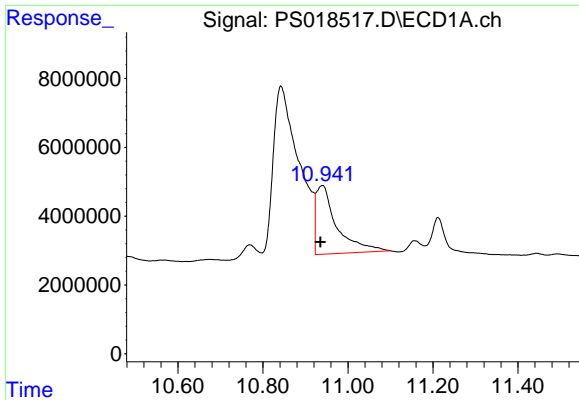
#13 2,4-DB

R.T.: 0.000 min
 Exp R.T. : 9.806 min
 Response: 0
 Conc: N.D.



#13 2,4-DB

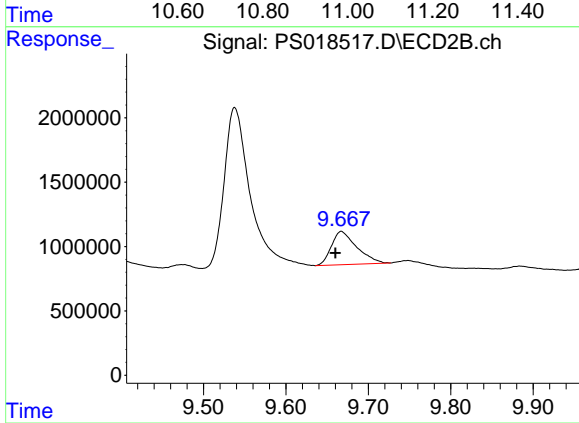
R.T.: 9.276 min
 Delta R.T.: -0.069 min
 Response: 105168348
 Conc: 194.66 ng/ml



#14 DINOSEB

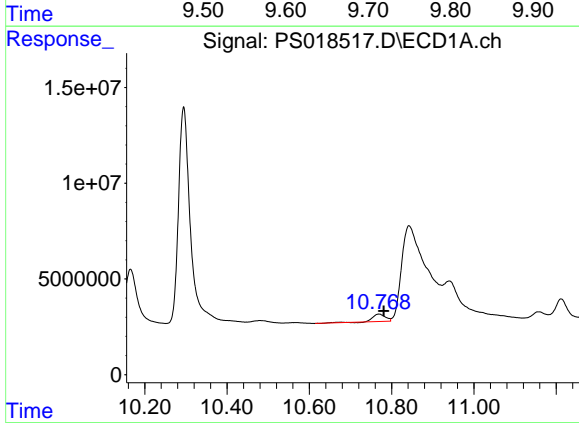
R.T.: 10.940 min
 Delta R.T.: 0.005 min
 Response: 67926554
 Conc: 8.74 ng/ml

Instrument :
 ECD_S
 ClientSampleId :
 I.BLK



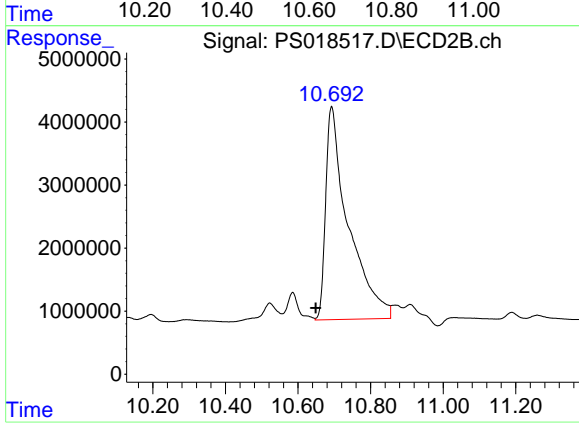
#14 DINOSEB

R.T.: 9.667 min
 Delta R.T.: 0.007 min
 Response: 5512153
 Conc: 1.90 ng/ml



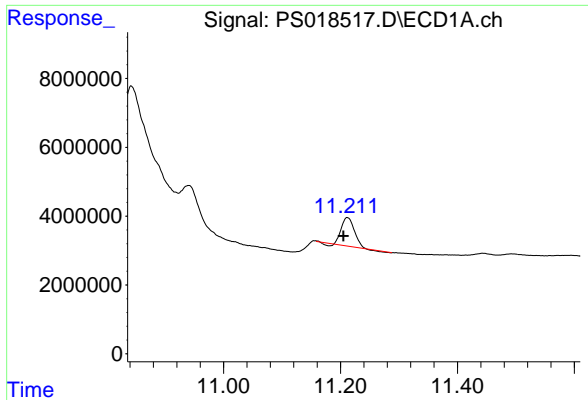
#15 Picloram

R.T.: 10.769 min
 Delta R.T.: -0.012 min
 Response: 8103158
 Conc: N.D.



#15 Picloram

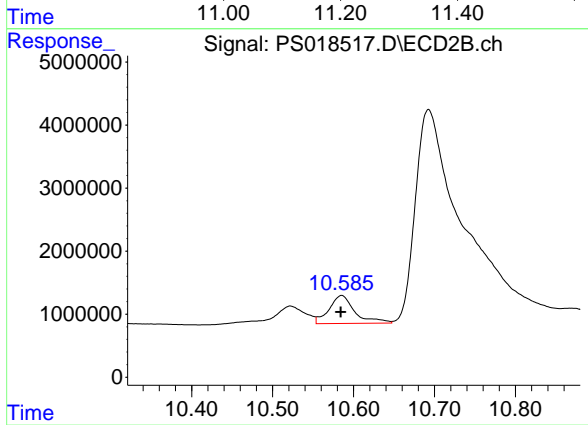
R.T.: 10.693 min
 Delta R.T.: 0.044 min
 Response: 146385453
 Conc: 25.31 ng/ml



#16 DCPA

R.T.: 11.212 min
 Delta R.T.: 0.007 min
 Response: 11873979
 Conc: N.D.

Instrument :
 ECD_S
 ClientSampleId :
 I.BLK



#16 DCPA

R.T.: 10.585 min
 Delta R.T.: 0.001 min
 Response: 9829000
 Conc: 1.98 ng/ml