

Data Path : Z:\pestpcbsrv\HPCHEM1\ECD\_S\Data\PS030920\  
 Data File : PS009193.D  
 Signal(s) : Signal #1: ECD1A.ch Signal #2: ECD2B.ch  
 Acq On : 09 Mar 2020 13:13  
 Operator : DD\AJ  
 Sample : L1778-09  
 Misc :  
 ALS Vial : 5 Sample Multiplier: 1

Instrument :  
 ECD\_S  
 ClientSampleId :  
 S3

Integration File signal 1: autoint1.e  
 Integration File signal 2: autoint2.e  
 Quant Time: Mar 10 03:14:18 2020  
 Quant Method : Z:\pestpcbsrv\HPCHEM1\ECD\_S\Method\PS022020.M  
 Quant Title : 8080.M  
 QLast Update : Thu Feb 20 11:30:26 2020  
 Response via : Initial Calibration  
 Integrator: ChemStation

Volume Inj. : 2 µl  
 Signal #1 Phase : Rtx-CLPesticides Signal #2 Phase: Rtx-CLPesticides2  
 Signal #1 Info : 30M x 0.32mm x0.5 Signal #2 Info : 30M x 0.32mm x 0.25µm

	Compound	RT#1	RT#2	Resp#1	Resp#2	ng/ml	ng/ml
-----							
System Monitoring Compounds							
4) S	2,4-DCAA	7.245	6.938	470.3E6	205.6E6	215.087	213.422
Target Compounds							
1) T	Dalapon	0.000	2.590	0	183.2E6	N.D.	125.305
2) T	3,5-DICHL...	0.000	6.113	0	156.9E6	N.D.	107.500
3) T	4-Nitroph...	0.000	6.567	0	22741331	N.D.	39.342
7) T	MCPA	7.797	7.405	224.5E6	135.4E6	27.910	30.603
8) T	DICHLORPROP	0.000	7.757	0	80006932	N.D.	79.853
10) T	Pentachlo...	8.739	8.496	67895597	39550948	2.340	2.784
11) T	2,4,5-TP ...	0.000	8.790	0	32559367	N.D.	6.011
12) T	2,4,5-T	9.452	9.256	80209259	18437584	7.502	3.406 #
14) T	DINOSEB	0.000	10.059	0	15563800	N.D.	3.936
15) T	Picloram	11.041	11.027	60704825	55841570	4.434	7.685 #
16) T	DCPA	0.000	11.027	0	55841570	N.D.	8.070
-----							

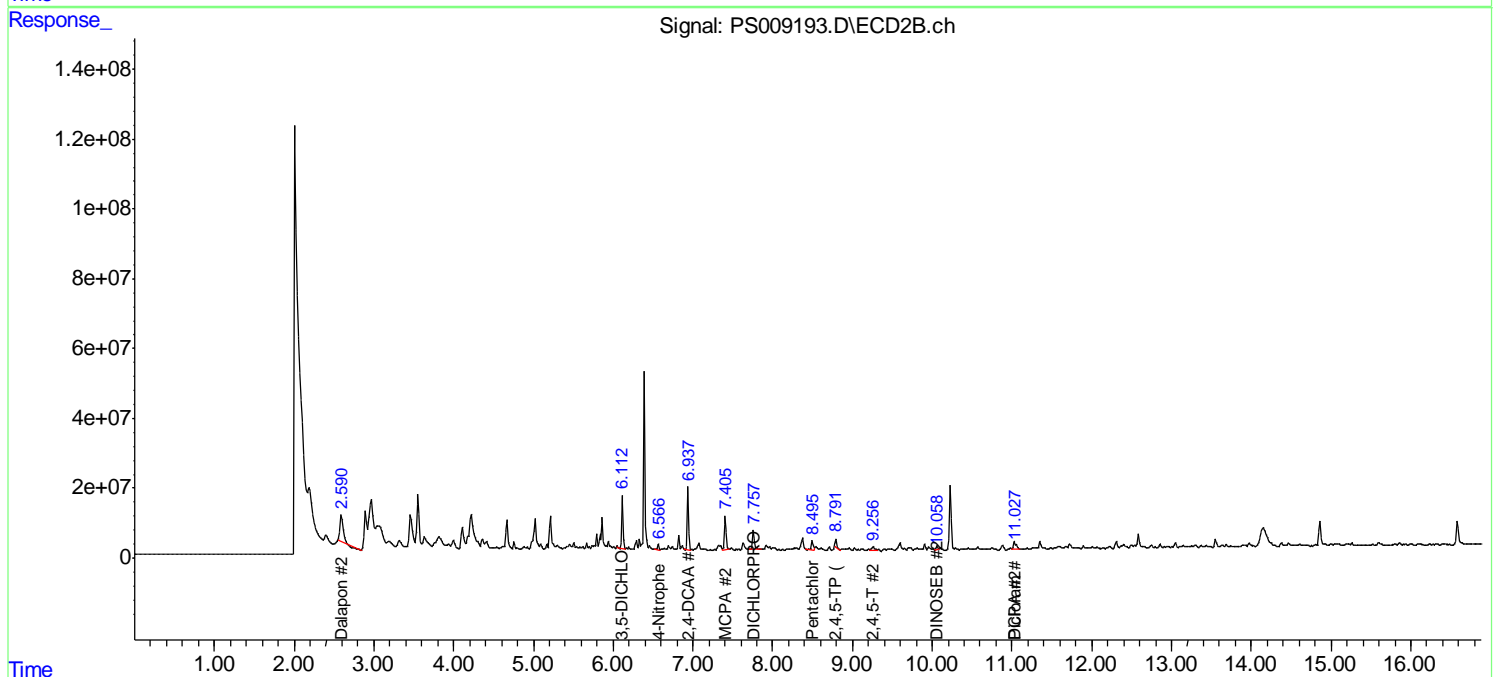
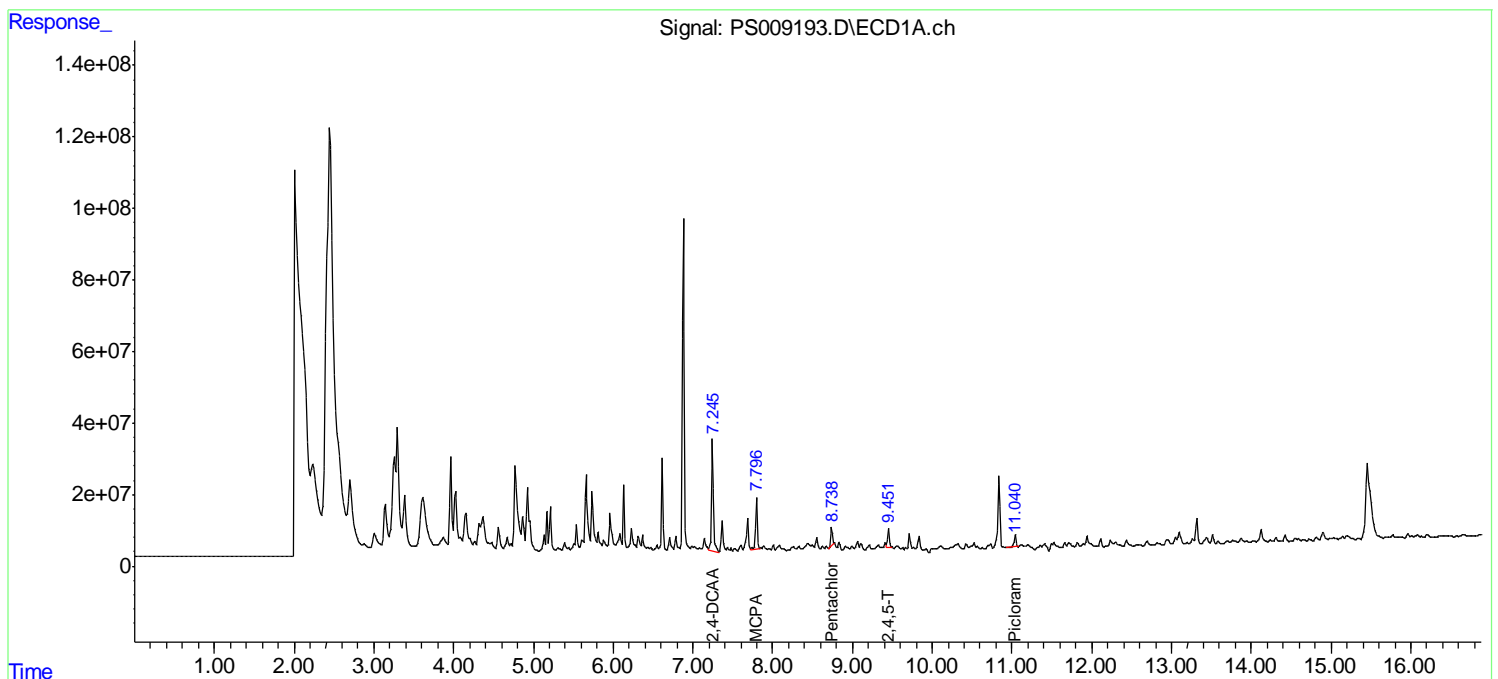
(f)=RT Delta > 1/2 Window (#)=Amounts differ by > 25% (m)=manual int.

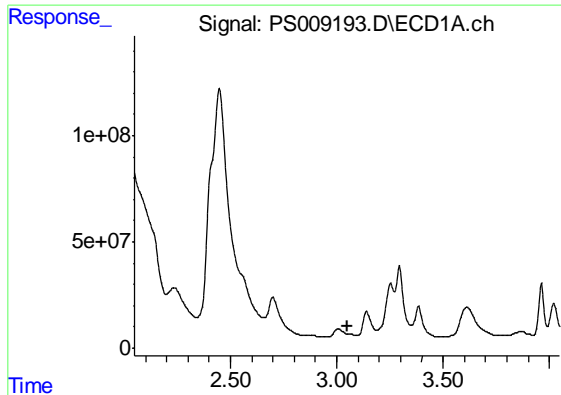
Data Path : Z:\pestpcbsrv\HPCHEM1\ECD\_S\Data\PS030920\  
 Data File : PS009193.D  
 Signal(s) : Signal #1: ECD1A.ch Signal #2: ECD2B.ch  
 Acq On : 09 Mar 2020 13:13  
 Operator : DD\AJ  
 Sample : L1778-09  
 Misc :  
 ALS Vial : 5 Sample Multiplier: 1

Instrument :  
 ECD\_S  
 ClientSampled :  
 S3

Integration File signal 1: autoint1.e  
 Integration File signal 2: autoint2.e  
 Quant Time: Mar 10 03:14:18 2020  
 Quant Method : Z:\pestpcbsrv\HPCHEM1\ECD\_S\Method\PS022020.M  
 Quant Title : 8080.M  
 QLast Update : Thu Feb 20 11:30:26 2020  
 Response via : Initial Calibration  
 Integrator: ChemStation

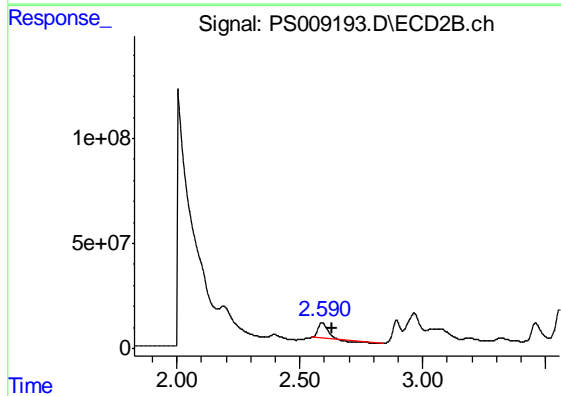
Volume Inj. : 2 µl  
 Signal #1 Phase : Rtx-CLPesticides Signal #2 Phase: Rtx-CLPesticides2  
 Signal #1 Info : 30M x 0.32mm x0.5 Signal #2 Info : 30M x 0.32mm x 0.25µm



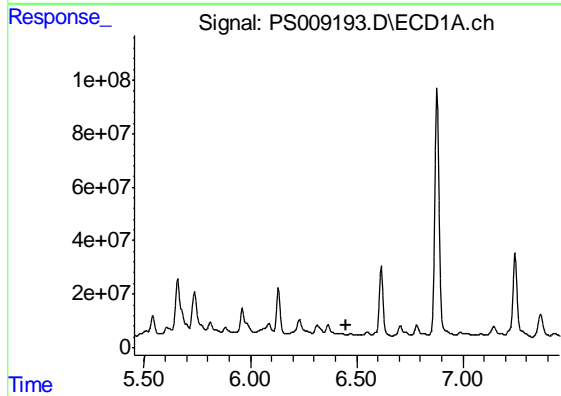


#1 Dalapon  
 R.T.: 0.000 min  
 Exp R.T. : 3.048 min  
 Response: 0  
 Conc: N.D.

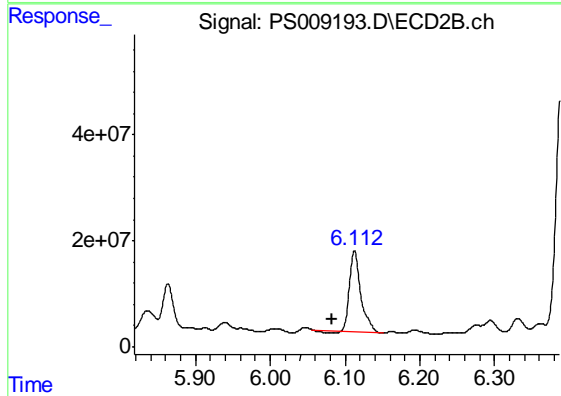
Instrument :  
 ECD\_S  
 ClientSampleId :  
 S3



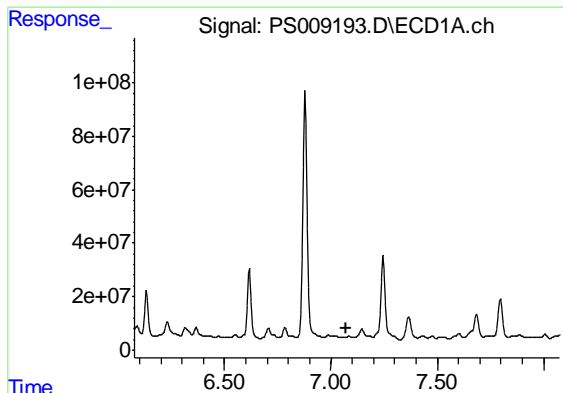
#1 Dalapon  
 R.T.: 2.590 min  
 Delta R.T.: -0.040 min  
 Response: 183223727  
 Conc: 125.31 ng/ml



#2 3,5-DICHLOROBENZOIC ACID  
 R.T.: 0.000 min  
 Exp R.T. : 6.455 min  
 Response: 0  
 Conc: N.D.



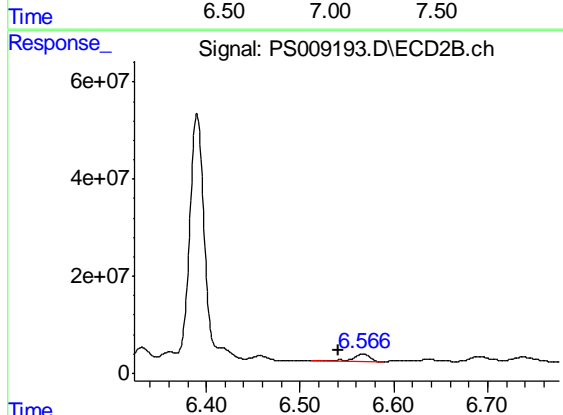
#2 3,5-DICHLOROBENZOIC ACID  
 R.T.: 6.113 min  
 Delta R.T.: 0.029 min  
 Response: 156871661  
 Conc: 107.50 ng/ml



#3 4-Nitrophenol

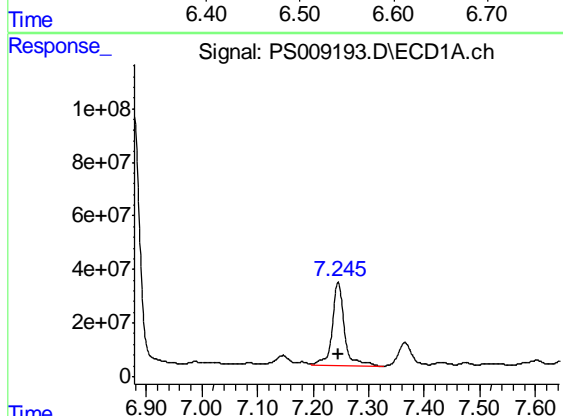
R.T.: 0.000 min  
 Exp R.T. : 7.075 min  
 Response: 0  
 Conc: N.D.

Instrument :  
 ECD\_S  
 ClientSampleId :  
 S3



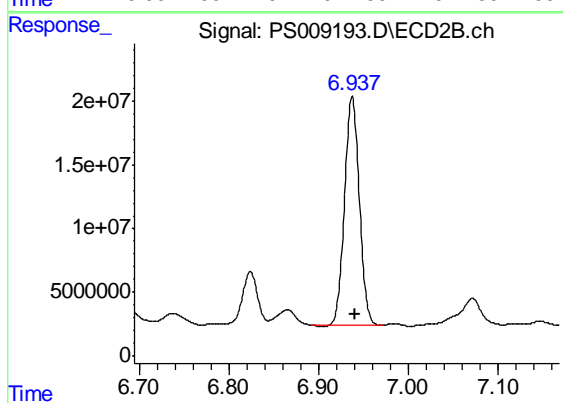
#3 4-Nitrophenol

R.T.: 6.567 min  
 Delta R.T.: 0.026 min  
 Response: 22741331  
 Conc: 39.34 ng/ml



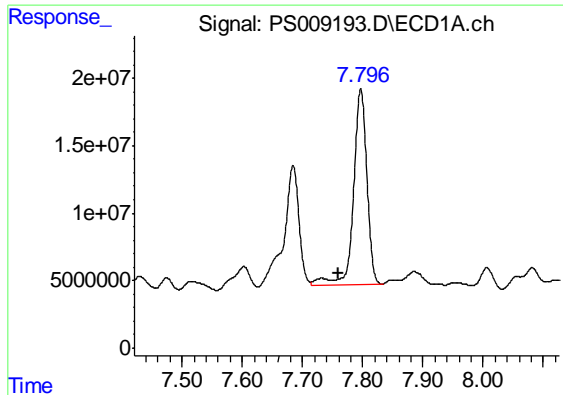
#4 2,4-DCAA

R.T.: 7.245 min  
 Delta R.T.: -0.002 min  
 Response: 470308067  
 Conc: 215.09 ng/ml



#4 2,4-DCAA

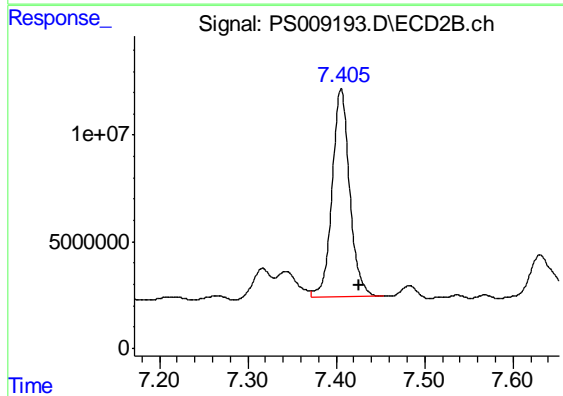
R.T.: 6.938 min  
 Delta R.T.: -0.003 min  
 Response: 205644074  
 Conc: 213.42 ng/ml



#7 MCPA

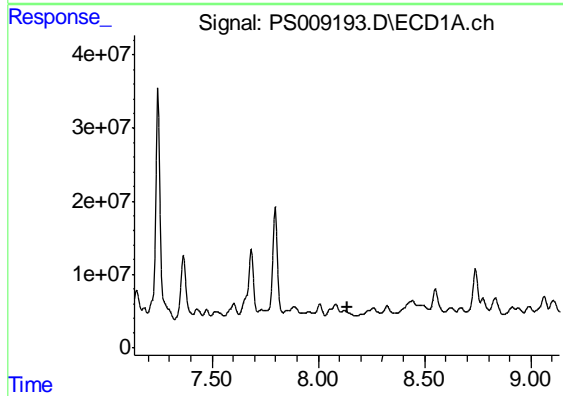
R.T.: 7.797 min  
 Delta R.T.: 0.036 min  
 Response: 224506184  
 Conc: 27.91 ug/ml

Instrument :  
 ECD\_S  
 ClientSampled :  
 S3



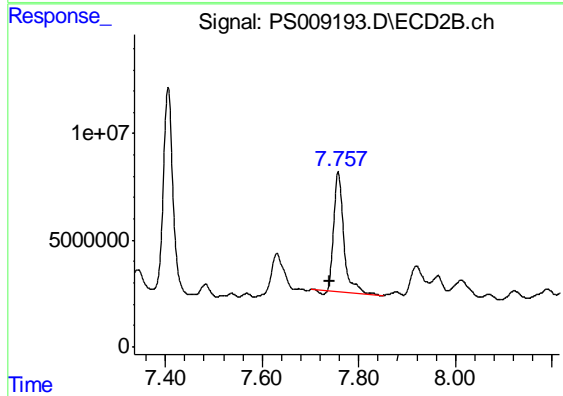
#7 MCPA

R.T.: 7.405 min  
 Delta R.T.: -0.020 min  
 Response: 135394220  
 Conc: 30.60 ug/ml



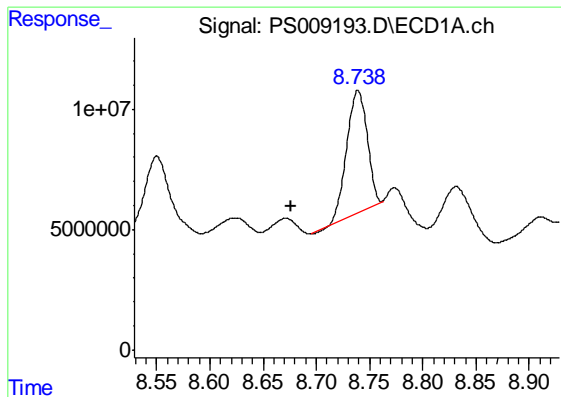
#8 DICHLORPROP

R.T.: 0.000 min  
 Exp R.T. : 8.135 min  
 Response: 0  
 Conc: N.D.



#8 DICHLORPROP

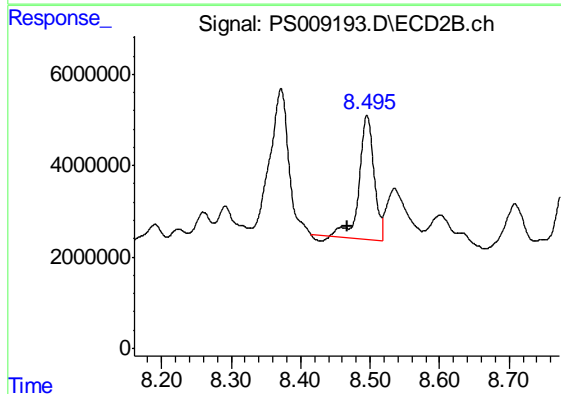
R.T.: 7.757 min  
 Delta R.T.: 0.018 min  
 Response: 80006932  
 Conc: 79.85 ng/ml



#10 Pentachlorophenol

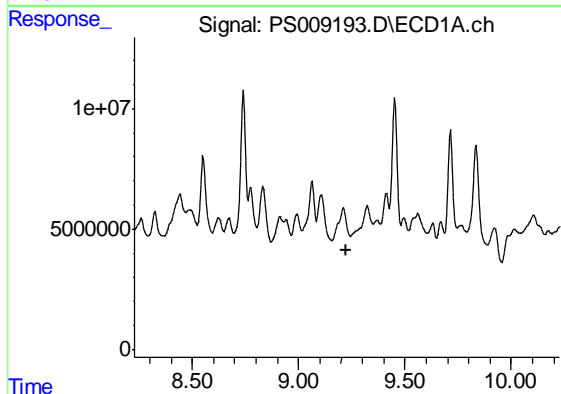
R.T.: 8.739 min  
 Delta R.T.: 0.062 min  
 Response: 67895597  
 Conc: 2.34 ng/ml

Instrument :  
 ECD\_S  
 ClientSampled :  
 S3



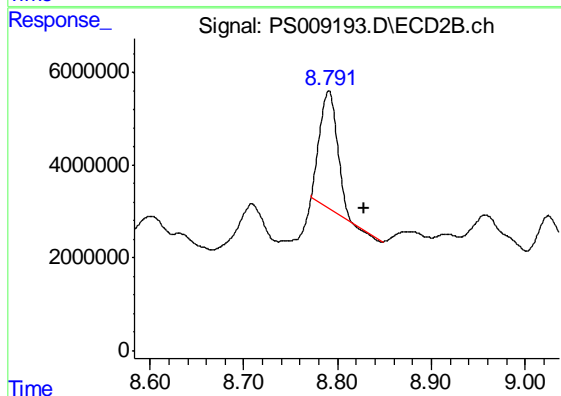
#10 Pentachlorophenol

R.T.: 8.496 min  
 Delta R.T.: 0.029 min  
 Response: 39550948  
 Conc: 2.78 ng/ml



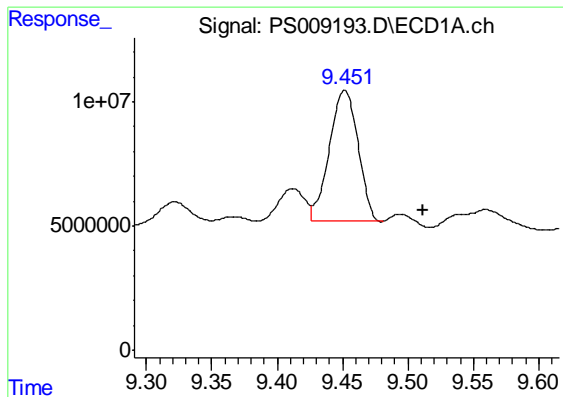
#11 2,4,5-TP (SILVEX)

R.T.: 0.000 min  
 Exp R.T. : 9.227 min  
 Response: 0  
 Conc: N.D.



#11 2,4,5-TP (SILVEX)

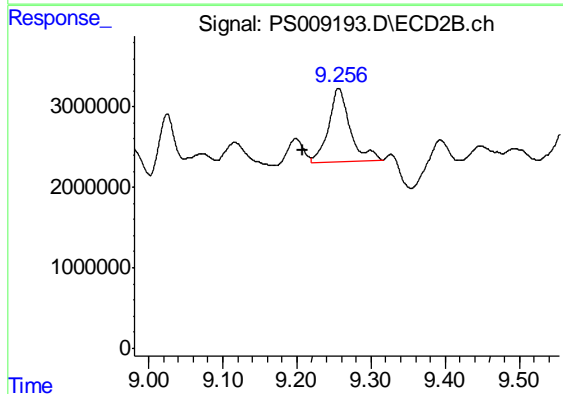
R.T.: 8.790 min  
 Delta R.T.: -0.038 min  
 Response: 32559367  
 Conc: 6.01 ng/ml



#12 2,4,5-T

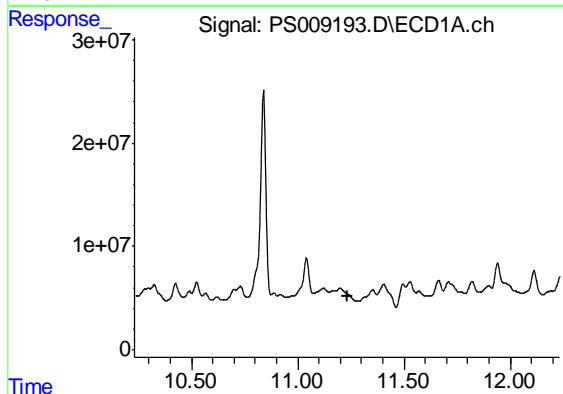
R.T.: 9.452 min  
 Delta R.T.: -0.060 min  
 Response: 80209259  
 Conc: 7.50 ng/ml

Instrument :  
 ECD\_S  
 ClientSampled :  
 S3



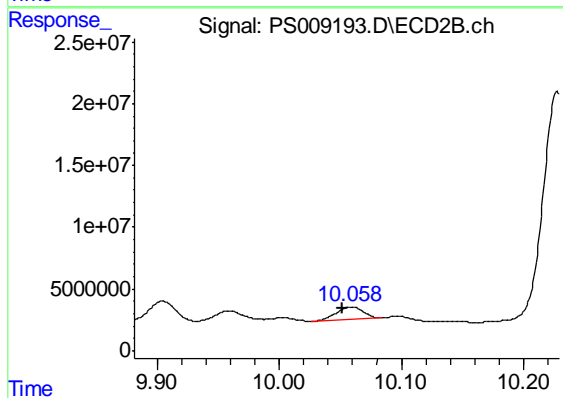
#12 2,4,5-T

R.T.: 9.256 min  
 Delta R.T.: 0.049 min  
 Response: 18437584  
 Conc: 3.41 ng/ml



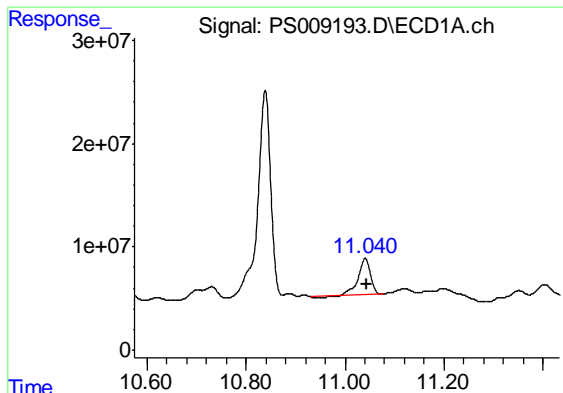
#14 DINOSEB

R.T.: 0.000 min  
 Exp R.T. : 11.231 min  
 Response: 0  
 Conc: N.D.



#14 DINOSEB

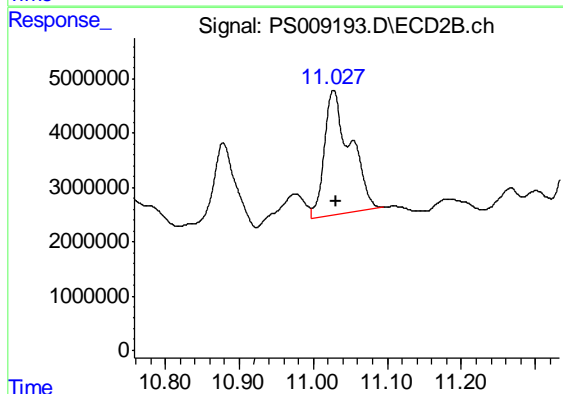
R.T.: 10.059 min  
 Delta R.T.: 0.008 min  
 Response: 15563800  
 Conc: 3.94 ng/ml



#15 Picloram

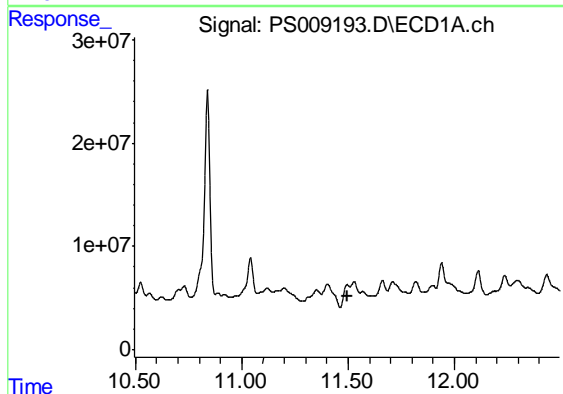
R.T.: 11.041 min  
 Delta R.T.: -0.002 min  
 Response: 60704825  
 Conc: 4.43 ng/ml

Instrument :  
 ECD\_S  
 ClientSampled :  
 S3



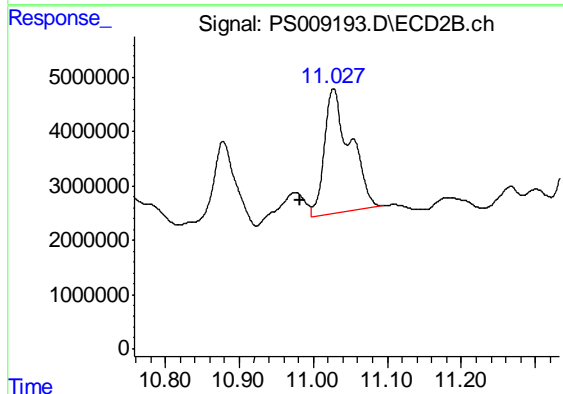
#15 Picloram

R.T.: 11.027 min  
 Delta R.T.: -0.004 min  
 Response: 55841570  
 Conc: 7.68 ng/ml



#16 DCPA

R.T.: 0.000 min  
 Exp R.T. : 11.495 min  
 Response: 0  
 Conc: N.D.



#16 DCPA

R.T.: 11.027 min  
 Delta R.T.: 0.045 min  
 Response: 55841570  
 Conc: 8.07 ng/ml