

Data Path : Z:\pestpcbsrv\HPCHEM1\ECD_S\Data\PS030921\
 Data File : PS014188.D
 Signal(s) : Signal #1: ECD1A.ch Signal #2: ECD2B.ch
 Acq On : 09 Mar 2021 09:10
 Operator : DD\AJ
 Sample : HSTDCCC750
 Misc :
 ALS Vial : 3 Sample Multiplier: 1

Instrument :
 ECD_S
 ClientSampleId :

Integration File signal 1: autoint1.e
 Integration File signal 2: autoint2.e
 Quant Time: Mar 09 12:58:31 2021
 Quant Method : Z:\pestpcbsrv\HPCHEM1\ECD_S\Method\PS030521.M
 Quant Title : 8080.M
 QLast Update : Sat Mar 06 03:17:26 2021
 Response via : Initial Calibration
 Integrator: ChemStation

Volume Inj. : 2 µl
 Signal #1 Phase : Rtx-CLPesticides Signal #2 Phase: Rtx-CLPesticides2
 Signal #1 Info : 30M x 0.32mm x0.5 Signal #2 Info : 30M x 0.32mm x 0.25µm

	Compound	RT#1	RT#2	Resp#1	Resp#2	ng/ml	ng/ml

System Monitoring Compounds							
4) S	2,4-DCAA	7.203	6.901	749.4E6	281.0E6	744.184	738.530
Target Compounds							
1) T	Dalapon	3.028	2.621	788.6E6	348.1E6	671.768	660.319
2) T	3,5-DICHL...	6.421	6.058	955.6E6	396.1E6	691.027	688.029
3) T	4-Nitroph...	7.039	6.518	338.9E6	160.5E6	652.454	654.663
5) T	DICAMBA	7.392	7.066	2842.7E6	1146.3E6	711.541	708.989
6) T	MCPD	7.559	7.160	211.1E6	93428512	71.561	70.487
7) T	MCPA	7.708	7.374	304.4E6	135.4E6	70.234	68.782
8) T	DICHLORPROP	8.083	7.691	684.0E6	284.6E6	700.577	695.532
9) T	2,4-D	8.316	7.990	759.1E6	336.9E6	702.127	697.985
10) T	Pentachlo...	8.621	8.412	10597.3E6	3951.5E6	722.119	719.978
11) T	2,4,5-TP ...	9.169	8.774	4093.1E6	1591.2E6	716.791	716.886
12) T	2,4,5-T	9.457	9.155	4267.7E6	1546.6E6	711.985	714.345
13) T	2,4-DB	10.012	9.663	706.5E6	198.8E6	667.991	693.715
14) T	DINOSEB	11.161	9.988	3308.6E6	1121.8E6	715.306	712.679
15) T	Picloram	11.002	10.988	5422.6E6	2241.5E6	679.358	678.979
16) T	DCPA	11.426	10.914	6088.5E6	2416.0E6	711.673	719.763

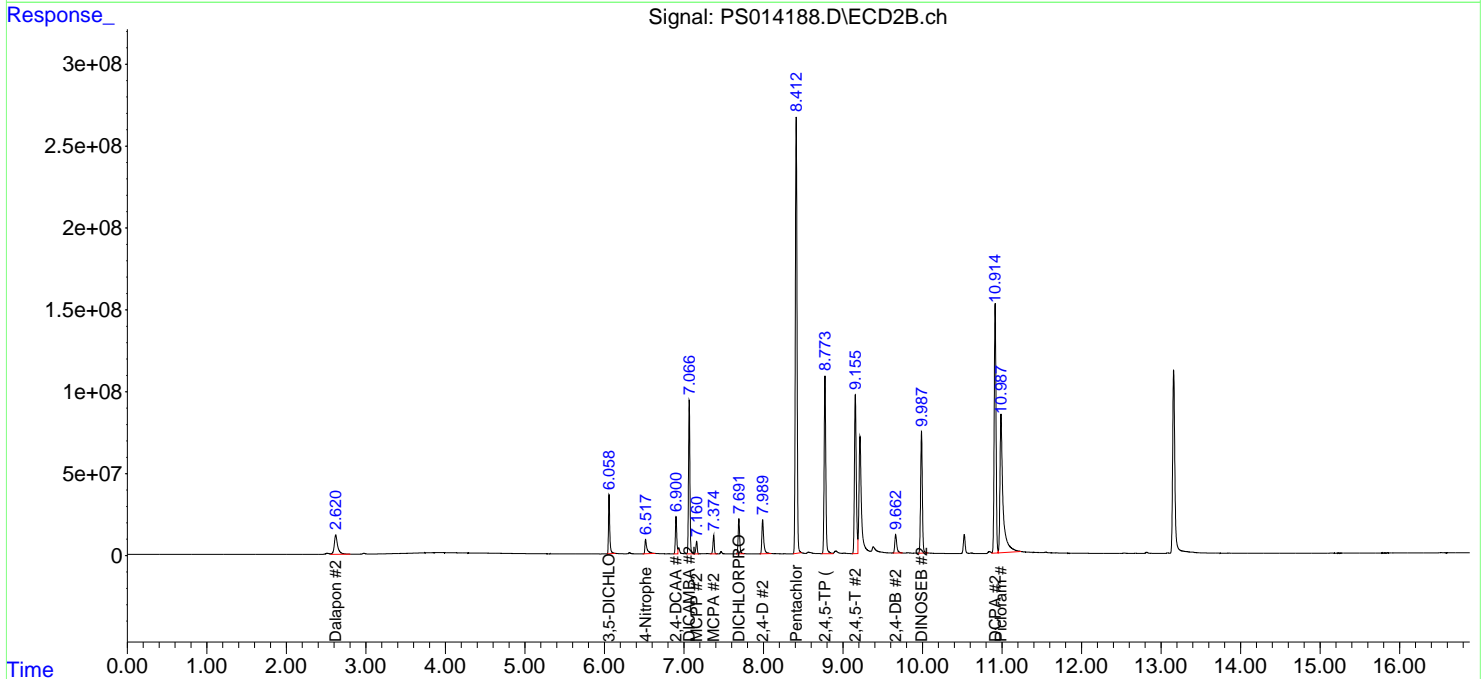
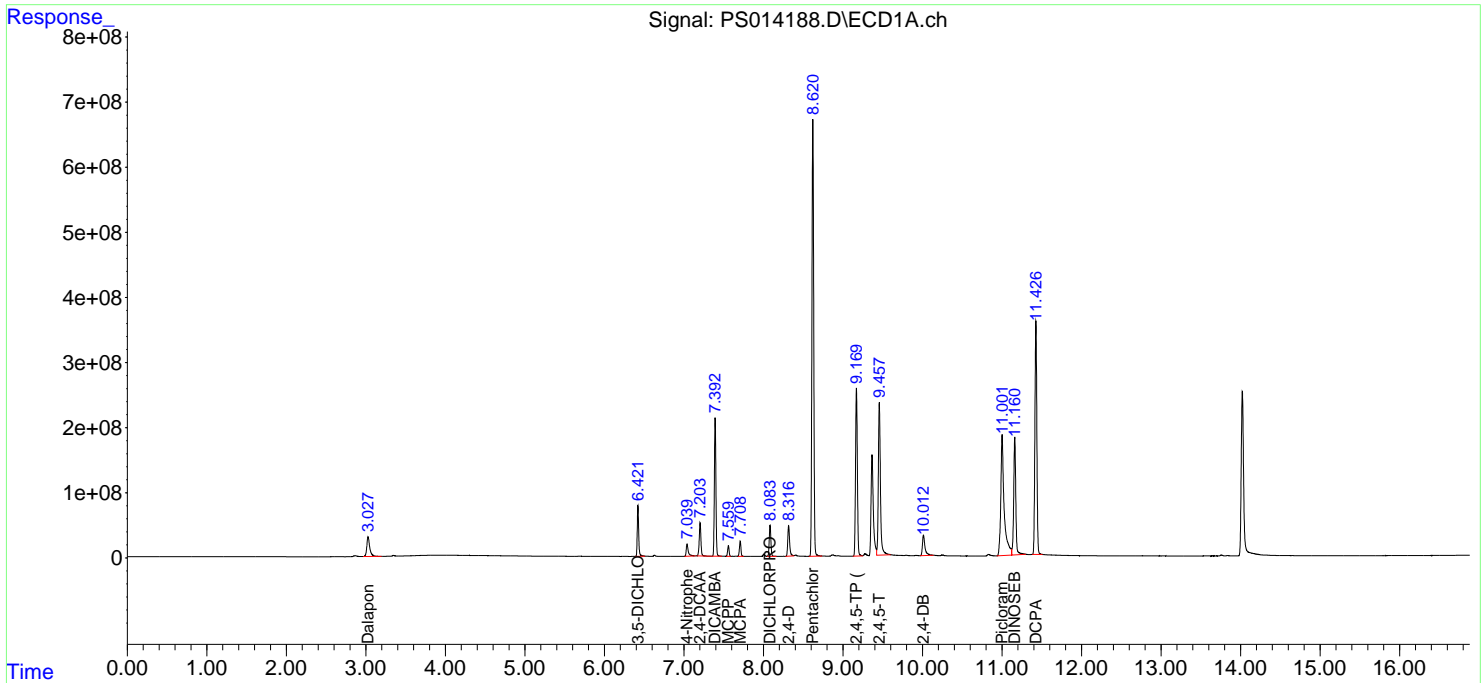
(f)=RT Delta > 1/2 Window (#)=Amounts differ by > 25% (m)=manual int.

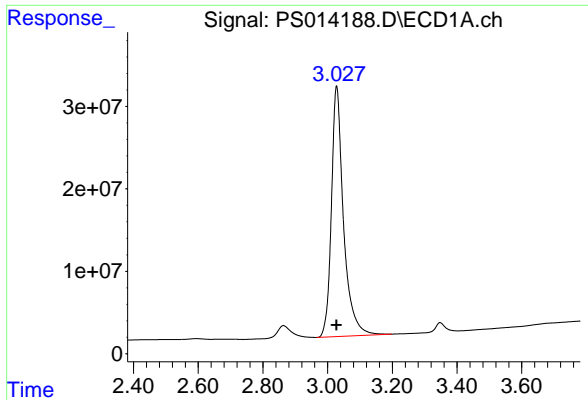
Data Path : Z:\pestpcbsrv\HPCHEM1\ECD_S\Data\PS030921\
 Data File : PS014188.D
 Signal(s) : Signal #1: ECD1A.ch Signal #2: ECD2B.ch
 Acq On : 09 Mar 2021 09:10
 Operator : DD\AJ
 Sample : HSTDCCC750
 Misc :
 ALS Vial : 3 Sample Multiplier: 1

Instrument :
 ECD_S
 ClientSampled :

Integration File signal 1: autoint1.e
 Integration File signal 2: autoint2.e
 Quant Time: Mar 09 12:58:31 2021
 Quant Method : Z:\pestpcbsrv\HPCHEM1\ECD_S\Method\PS030521.M
 Quant Title : 8080.M
 QLast Update : Sat Mar 06 03:17:26 2021
 Response via : Initial Calibration
 Integrator: ChemStation

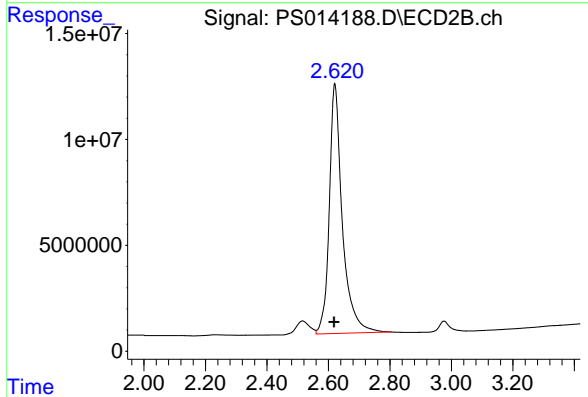
Volume Inj. : 2 µl
 Signal #1 Phase : Rtx-CLPesticides Signal #2 Phase: Rtx-CLPesticides2
 Signal #1 Info : 30M x 0.32mm x0.5 Signal #2 Info : 30M x 0.32mm x 0.25µm



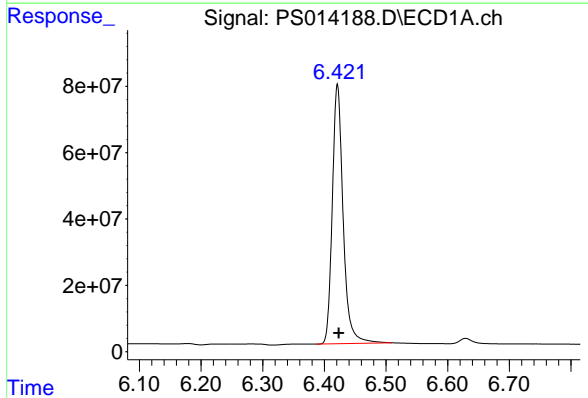


#1 Dalapon
 R.T.: 3.028 min
 Delta R.T.: 0.000 min
 Response: 788586083
 Conc: 671.77 ng/ml

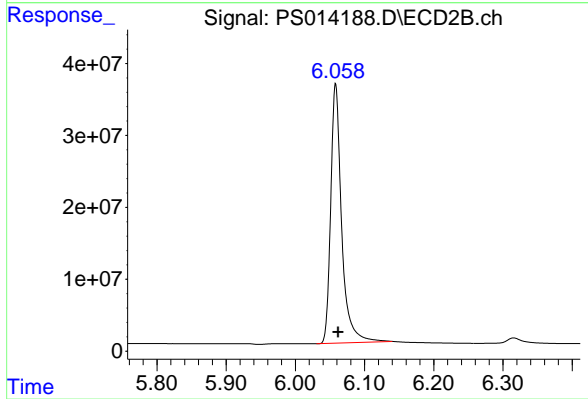
Instrument :
 ECD_S
 ClientSampleId :



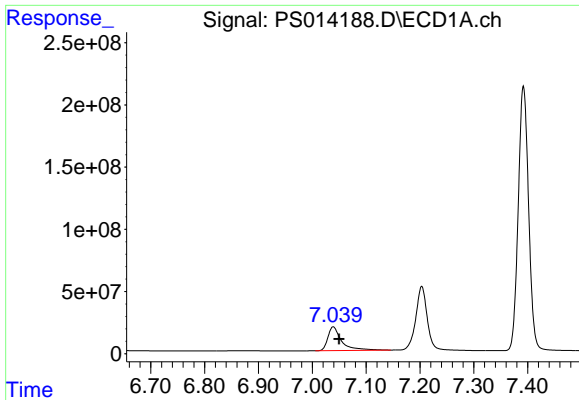
#1 Dalapon
 R.T.: 2.621 min
 Delta R.T.: 0.002 min
 Response: 348072513
 Conc: 660.32 ng/ml



#2 3,5-DICHLOROBENZOIC ACID
 R.T.: 6.421 min
 Delta R.T.: -0.002 min
 Response: 955622010
 Conc: 691.03 ng/ml

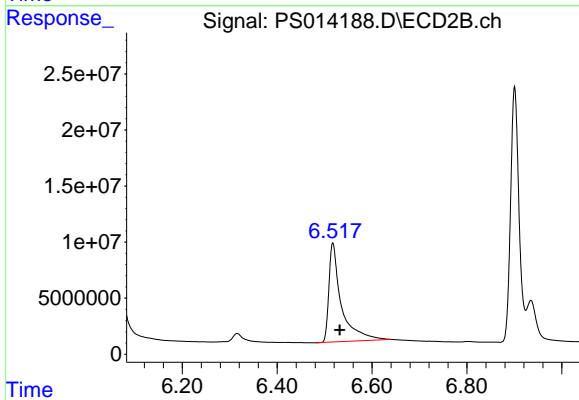


#2 3,5-DICHLOROBENZOIC ACID
 R.T.: 6.058 min
 Delta R.T.: -0.003 min
 Response: 396067391
 Conc: 688.03 ng/ml

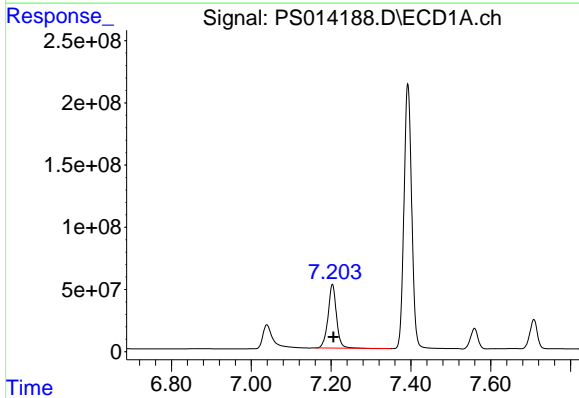


#3 4-Nitrophenol
 R.T.: 7.039 min
 Delta R.T.: -0.010 min
 Response: 338887650
 Conc: 652.45 ng/ml

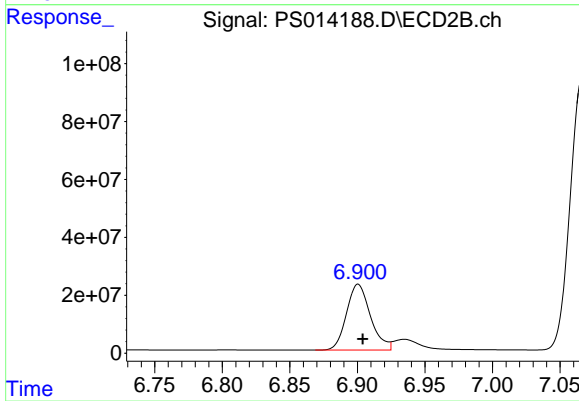
Instrument :
 ECD_S
 ClientSampleId :



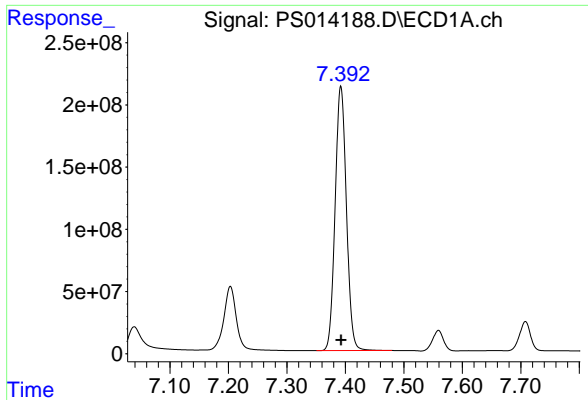
#3 4-Nitrophenol
 R.T.: 6.518 min
 Delta R.T.: -0.014 min
 Response: 160527522
 Conc: 654.66 ng/ml



#4 2,4-DCAA
 R.T.: 7.203 min
 Delta R.T.: -0.003 min
 Response: 749374251
 Conc: 744.18 ng/ml



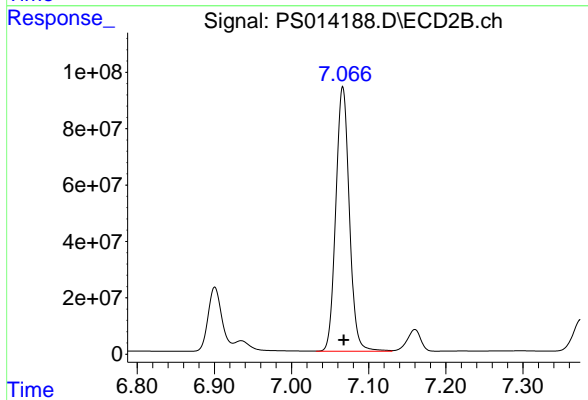
#4 2,4-DCAA
 R.T.: 6.901 min
 Delta R.T.: -0.003 min
 Response: 280971736
 Conc: 738.53 ng/ml



#5 DICAMBA

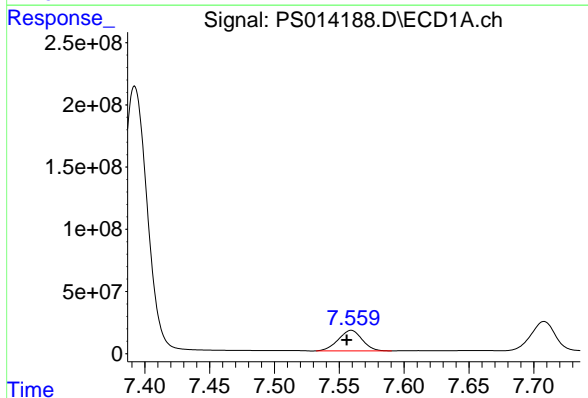
R.T.: 7.392 min
 Delta R.T.: 0.000 min
 Response: 2842705252
 Conc: 711.54 ng/ml

Instrument :
 ECD_S
 ClientSampled :



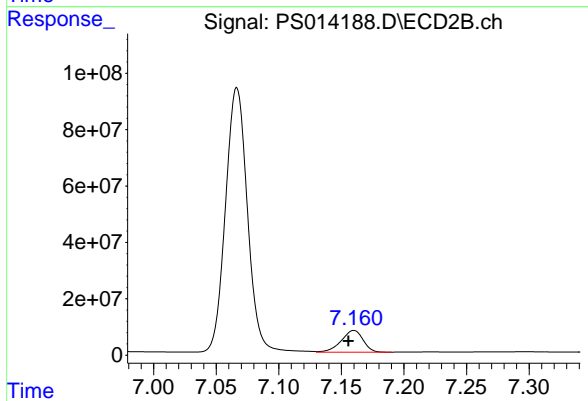
#5 DICAMBA

R.T.: 7.066 min
 Delta R.T.: -0.001 min
 Response: 1146262795
 Conc: 708.99 ng/ml



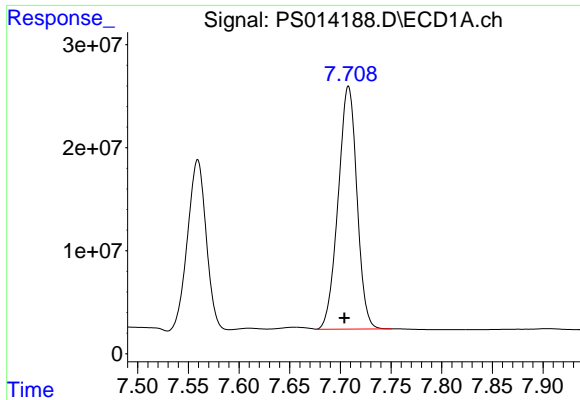
#6 MCPP

R.T.: 7.559 min
 Delta R.T.: 0.003 min
 Response: 211105266
 Conc: 71.56 ug/ml



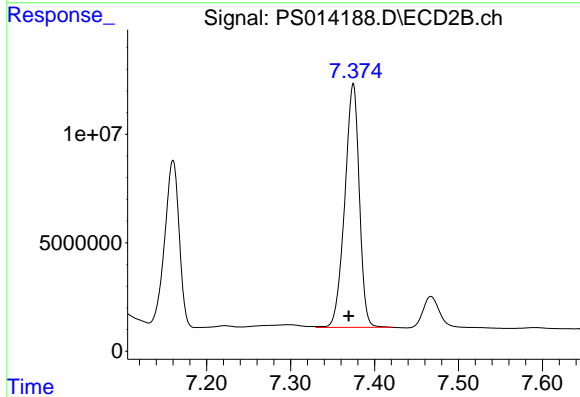
#6 MCPP

R.T.: 7.160 min
 Delta R.T.: 0.004 min
 Response: 93428512
 Conc: 70.49 ug/ml

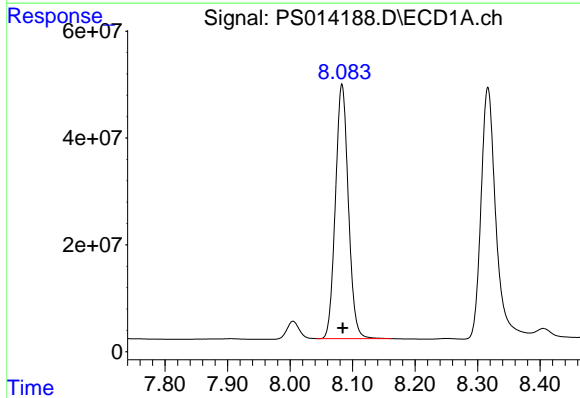


#7 MCPA
 R.T.: 7.708 min
 Delta R.T.: 0.004 min
 Response: 304444055
 Conc: 70.23 ug/ml

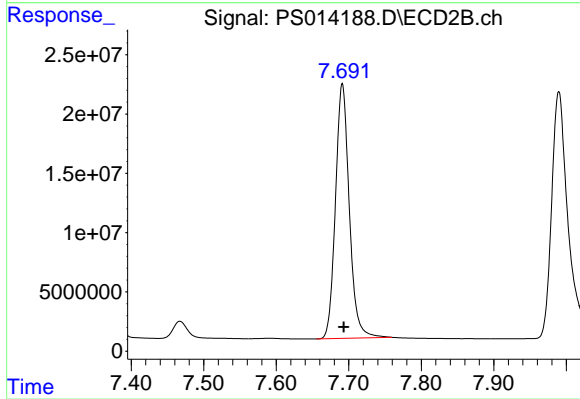
Instrument :
 ECD_S
 ClientSampled :



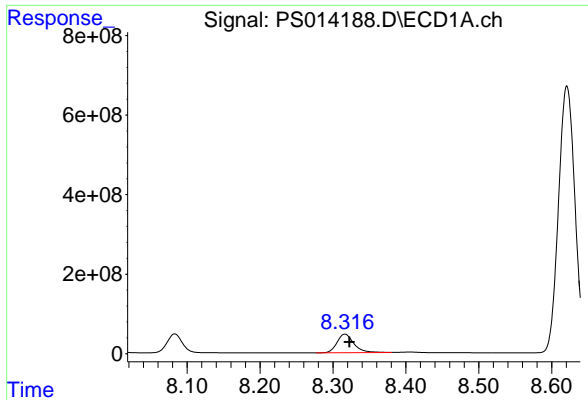
#7 MCPA
 R.T.: 7.374 min
 Delta R.T.: 0.005 min
 Response: 135428845
 Conc: 68.78 ug/ml



#8 DICHLORPROP
 R.T.: 8.083 min
 Delta R.T.: -0.001 min
 Response: 684028259
 Conc: 700.58 ng/ml

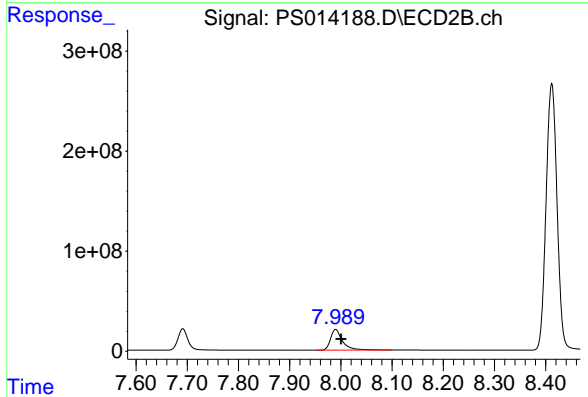


#8 DICHLORPROP
 R.T.: 7.691 min
 Delta R.T.: -0.002 min
 Response: 284581618
 Conc: 695.53 ng/ml

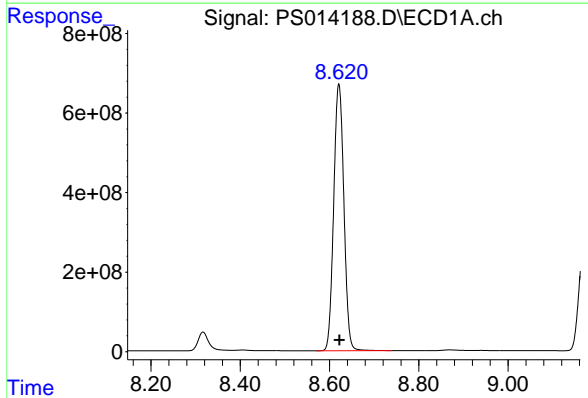


#9 2,4-D
 R.T.: 8.316 min
 Delta R.T.: -0.006 min
 Response: 759121795
 Conc: 702.13 ng/ml

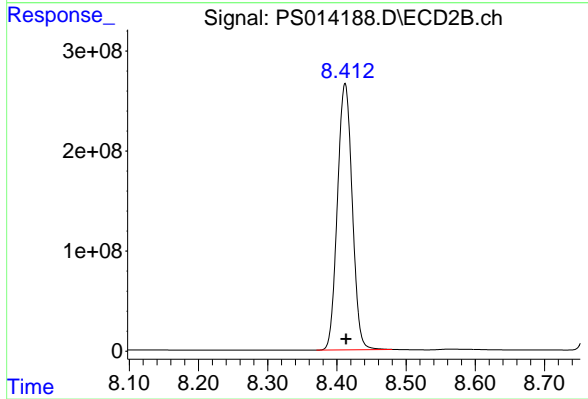
Instrument :
 ECD_S
 ClientSampled :



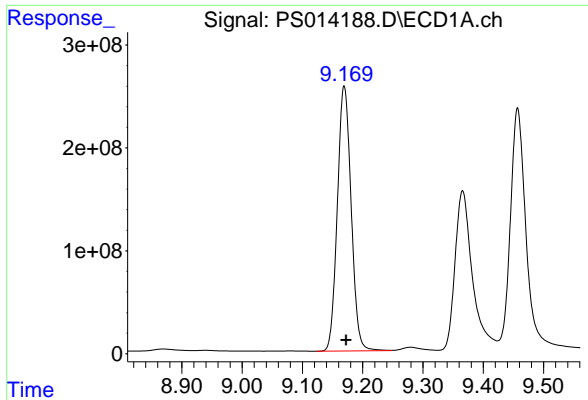
#9 2,4-D
 R.T.: 7.990 min
 Delta R.T.: -0.010 min
 Response: 336889888
 Conc: 697.99 ng/ml



#10 Pentachlorophenol
 R.T.: 8.621 min
 Delta R.T.: 0.000 min
 Response: 10597262763
 Conc: 722.12 ng/ml

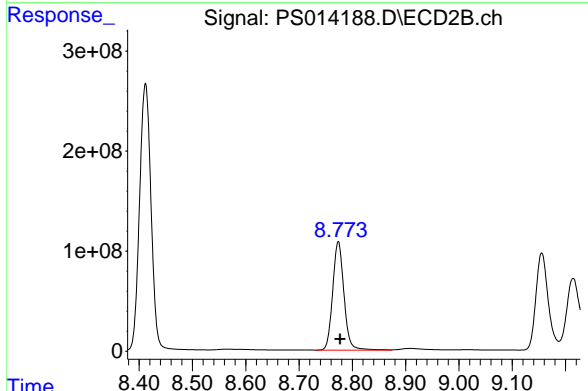


#10 Pentachlorophenol
 R.T.: 8.412 min
 Delta R.T.: -0.002 min
 Response: 3951488520
 Conc: 719.98 ng/ml

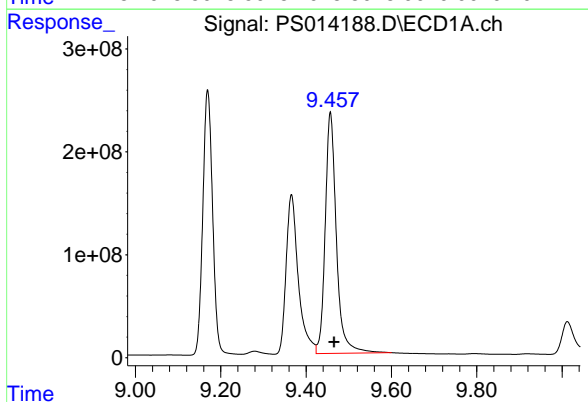


#11 2,4,5-TP (SILVEX)
 R.T.: 9.169 min
 Delta R.T.: -0.003 min
 Response: 4093129811
 Conc: 716.79 ng/ml

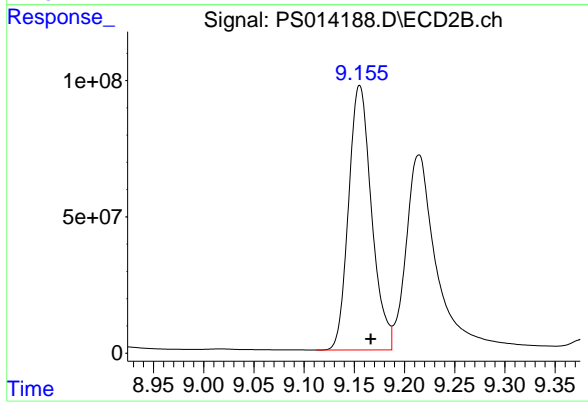
Instrument :
 ECD_S
 ClientSampled :



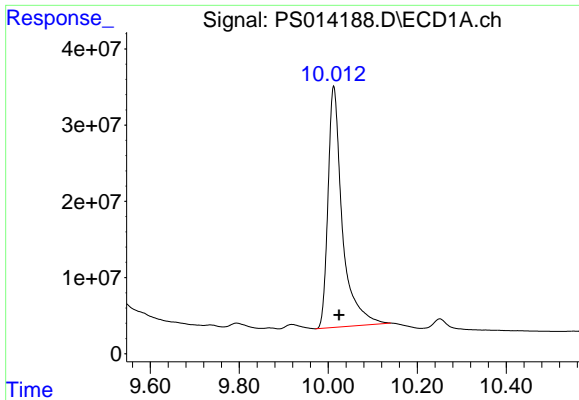
#11 2,4,5-TP (SILVEX)
 R.T.: 8.774 min
 Delta R.T.: -0.003 min
 Response: 1591173007
 Conc: 716.89 ng/ml



#12 2,4,5-T
 R.T.: 9.457 min
 Delta R.T.: -0.009 min
 Response: 4267702049
 Conc: 711.99 ng/ml

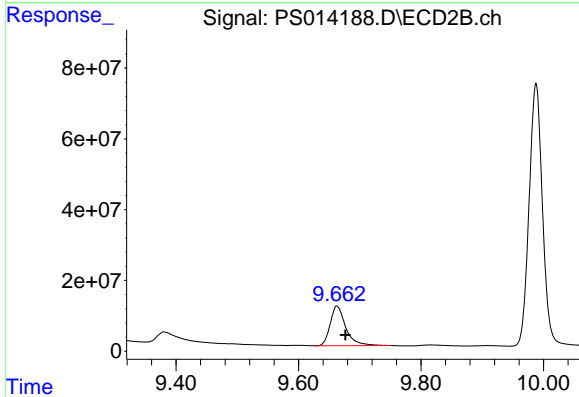


#12 2,4,5-T
 R.T.: 9.155 min
 Delta R.T.: -0.011 min
 Response: 1546609359
 Conc: 714.34 ng/ml

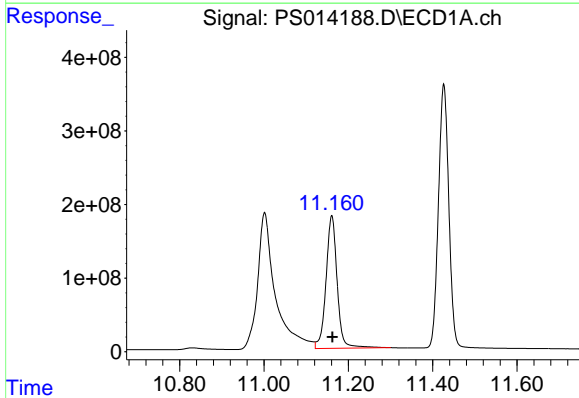


#13 2,4-DB
 R.T.: 10.012 min
 Delta R.T.: -0.012 min
 Response: 706503295
 Conc: 667.99 ng/ml

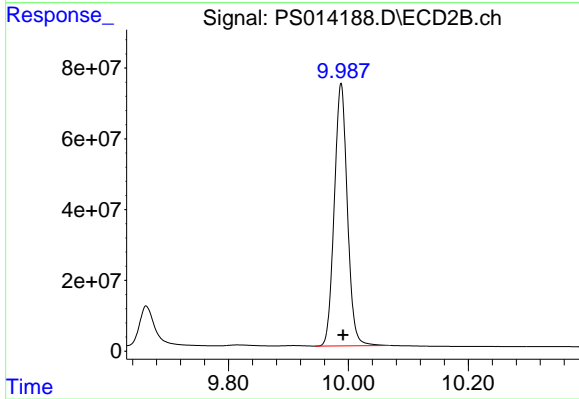
Instrument :
 ECD_S
 ClientSampleId :



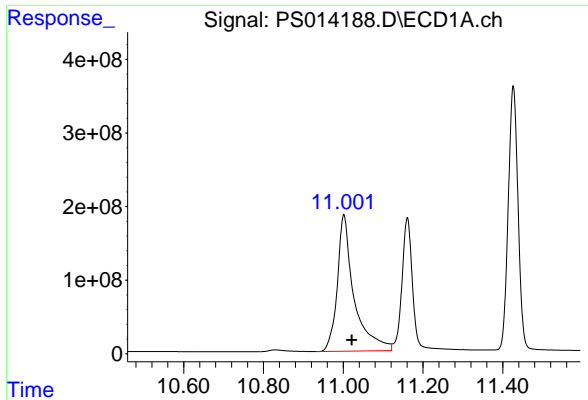
#13 2,4-DB
 R.T.: 9.663 min
 Delta R.T.: -0.014 min
 Response: 198765044
 Conc: 693.72 ng/ml



#14 DINOSEB
 R.T.: 11.161 min
 Delta R.T.: -0.002 min
 Response: 3308574167
 Conc: 715.31 ng/ml



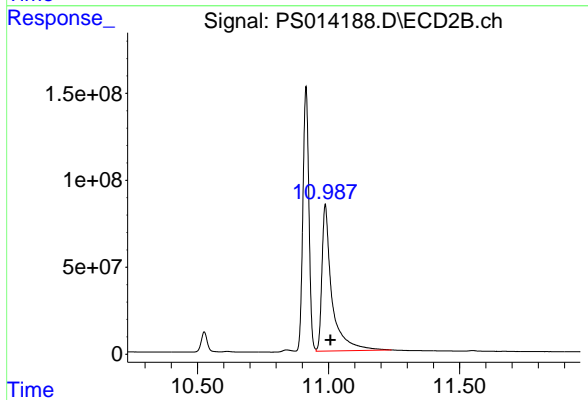
#14 DINOSEB
 R.T.: 9.988 min
 Delta R.T.: -0.003 min
 Response: 1121795965
 Conc: 712.68 ng/ml



#15 Picloram

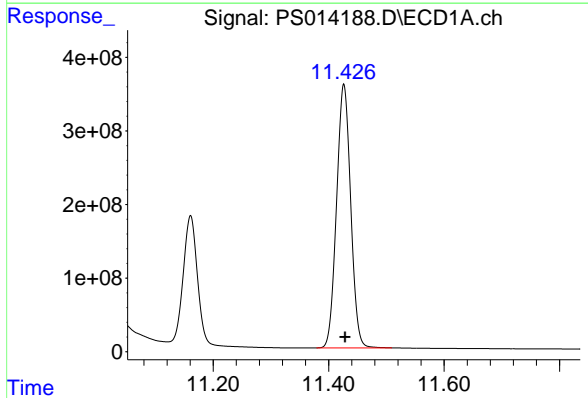
R.T.: 11.002 min
Delta R.T.: -0.019 min
Response: 5422566523
Conc: 679.36 ng/ml

Instrument :
ECD_S
ClientSampled :



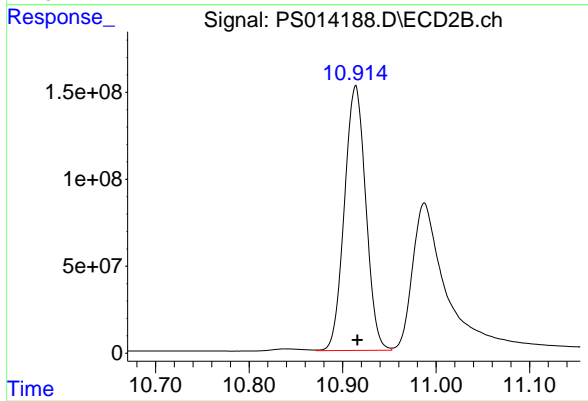
#15 Picloram

R.T.: 10.988 min
Delta R.T.: -0.020 min
Response: 2241466307
Conc: 678.98 ng/ml



#16 DCPA

R.T.: 11.426 min
Delta R.T.: -0.002 min
Response: 6088503563
Conc: 711.67 ng/ml



#16 DCPA

R.T.: 10.914 min
Delta R.T.: -0.002 min
Response: 2416032474
Conc: 719.76 ng/ml