

Data Path : Z:\pestpcbsrv\HPCHEM1\ECD_S\Data\PS030922\
 Data File : PS018524.D
 Signal(s) : Signal #1: ECD1A.ch Signal #2: ECD2B.ch
 Acq On : 09 Mar 2022 15:18
 Operator : AJ\MA
 Sample : N1802-02
 Misc :
 ALS Vial : 6 Sample Multiplier: 1

Instrument :
 ECD_S
 ClientSampleId :

Integration File signal 1: autoint1.e
 Integration File signal 2: autoint2.e
 Quant Time: Mar 10 00:12:20 2022
 Quant Method : Z:\pestpcbsrv\HPCHEM1\ECD_S\Method\PS022122.M
 Quant Title : 8080.M
 QLast Update : Tue Feb 22 00:27:26 2022
 Response via : Initial Calibration
 Integrator: ChemStation

Volume Inj. : 2 µl
 Signal #1 Phase : Rtx-CLPesticides Signal #2 Phase: Rtx-CLPesticides2
 Signal #1 Info : 30M x 0.32mm x0.5 Signal #2 Info : 30M x 0.32mm x 0.25µm

	Compound	RT#1	RT#2	Resp#1	Resp#2	ng/ml	ng/ml

System Monitoring Compounds							
4) S	2,4-DCAA	7.018	6.629	576.8E6	386.0E6	346.603	579.298 #
Target Compounds							
1) T	Dalapon	2.833f	2.417	68402843	481.8E6	25.218	563.898 #
2) T	3,5-DICHL...	6.280	5.874	-2747500	55704108	N.D.	54.639
3) T	4-Nitroph...	6.871	6.277	264.1E6	-2110313	306.747	N.D. #
5) T	DICAMBA	7.205	6.750f	20507798	119.5E6	3.119	42.557 #
6) T	MCP P	7.408	6.866	94358956	18872774	19.494	8.295 #
7) T	MCPA	7.449f	7.135f	59336874	690171	8.439	<MDL #
8) T	DICHLORPROP	7.879	7.410	32487486	120.6E6	19.209	163.854 #
10) T	Pentachlo...	8.430	8.094	363.0E6	34318823	15.329	3.601 #
11) T	2,4,5-TP ...	8.961	8.413f	26281539	11630.1E6	2.760	2816.975 #
12) T	2,4,5-T	9.243	8.834	108.1E6	980.4E6	10.751	249.066 #
13) T	2,4-DB	9.836	9.355	7410.5E6	4920.1E6	4264.269	9106.805 #
14) T	DINOSEB	10.868f	9.658	90219.9E6	2934.2E6	11612.621	1009.350 #
15) T	Picloram	10.734f	10.653	20898.3E6	4526.8E6	1644.749	782.778 #

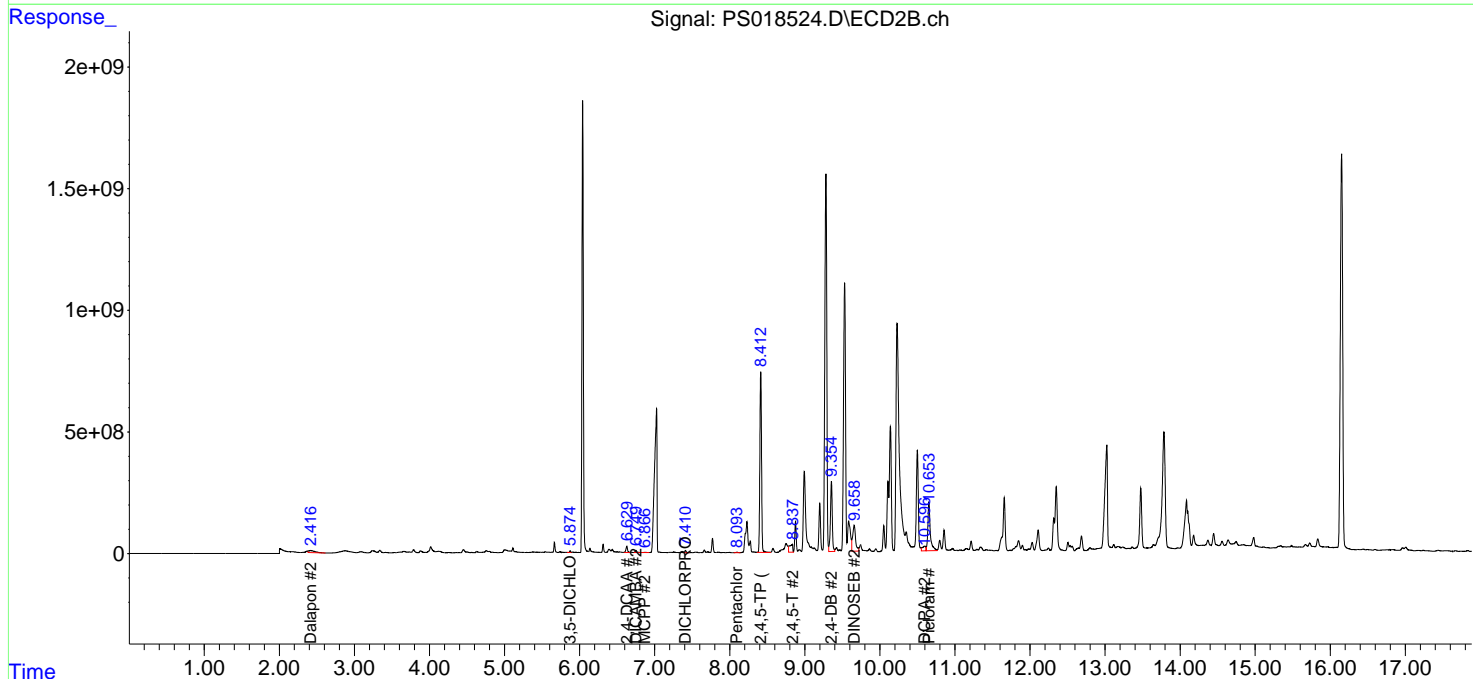
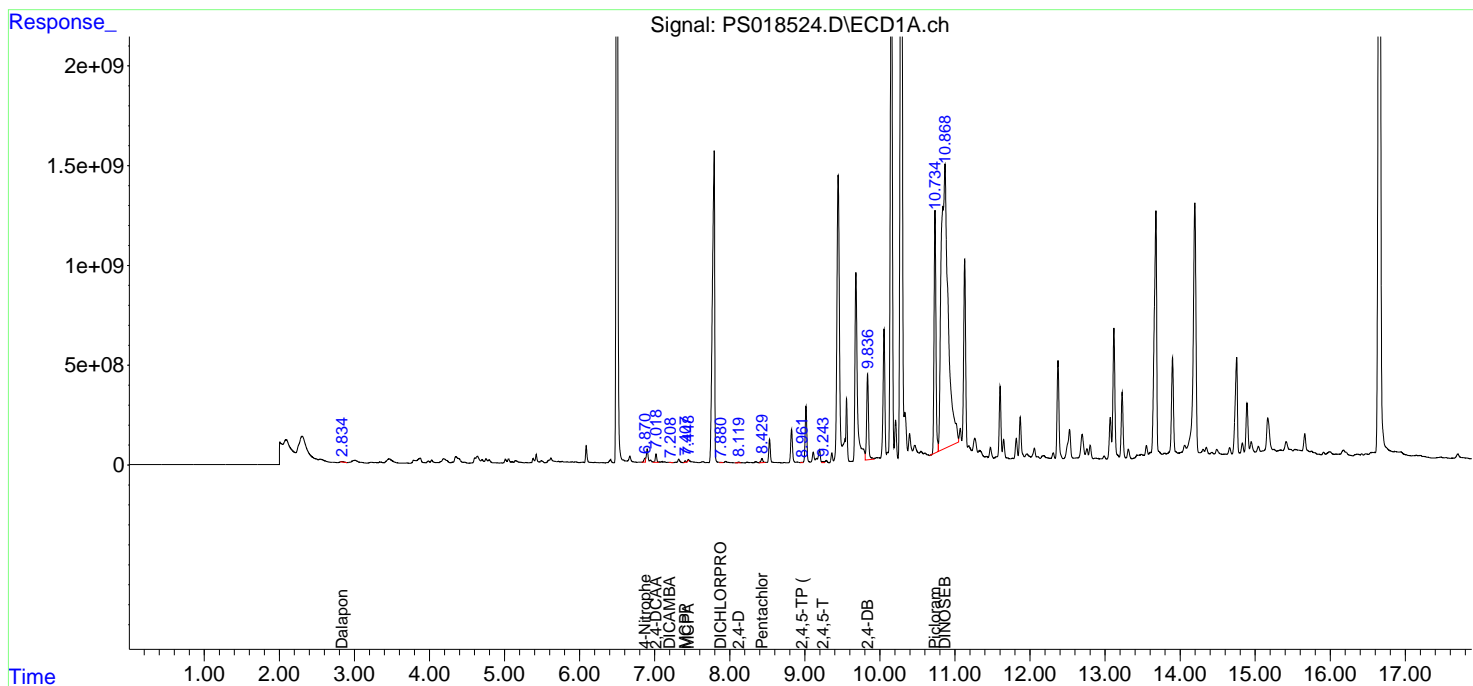
(f)=RT Delta > 1/2 Window (#)=Amounts differ by > 25% (m)=manual int.

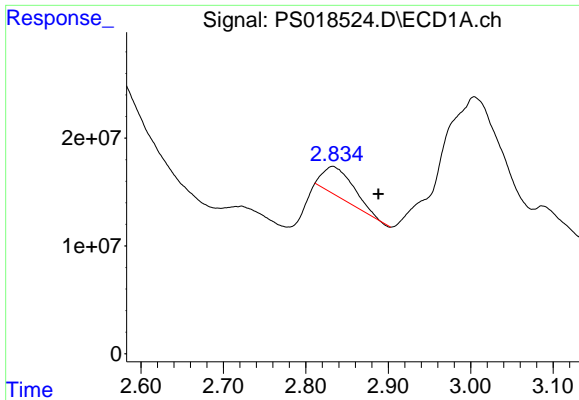
Data Path : Z:\pestpcbsrv\HPCHEM1\ECD_S\Data\PS030922\
 Data File : PS018524.D
 Signal(s) : Signal #1: ECD1A.ch Signal #2: ECD2B.ch
 Acq On : 09 Mar 2022 15:18
 Operator : AJ\MA
 Sample : N1802-02
 Misc :
 ALS Vial : 6 Sample Multiplier: 1

Instrument :
 ECD_S
 ClientSampleId :

Integration File signal 1: autoint1.e
 Integration File signal 2: autoint2.e
 Quant Time: Mar 10 00:12:20 2022
 Quant Method : Z:\pestpcbsrv\HPCHEM1\ECD_S\Method\PS022122.M
 Quant Title : 8080.M
 QLast Update : Tue Feb 22 00:27:26 2022
 Response via : Initial Calibration
 Integrator: ChemStation

Volume Inj. : 2 µl
 Signal #1 Phase : Rtx-CLPesticides Signal #2 Phase: Rtx-CLPesticides2
 Signal #1 Info : 30M x 0.32mm x0.5 Signal #2 Info : 30M x 0.32mm x 0.25µm

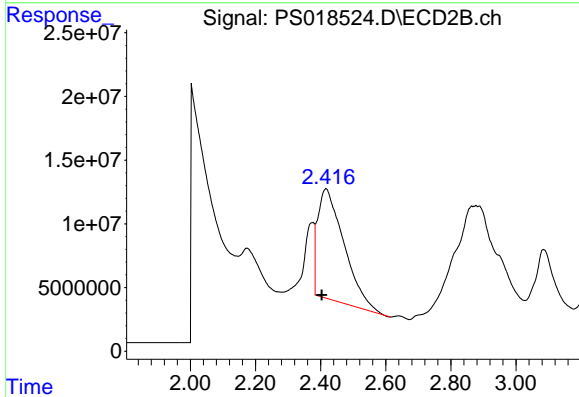




#1 Dalapon

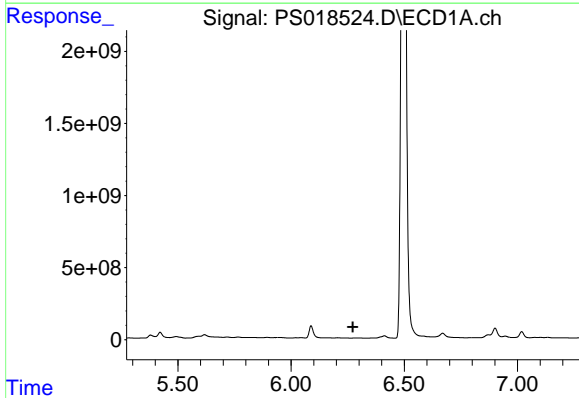
R.T.: 2.833 min
 Delta R.T.: -0.055 min
 Response: 68402843
 Conc: 25.22 ng/ml

Instrument :
 ECD_S
 ClientSampleId :



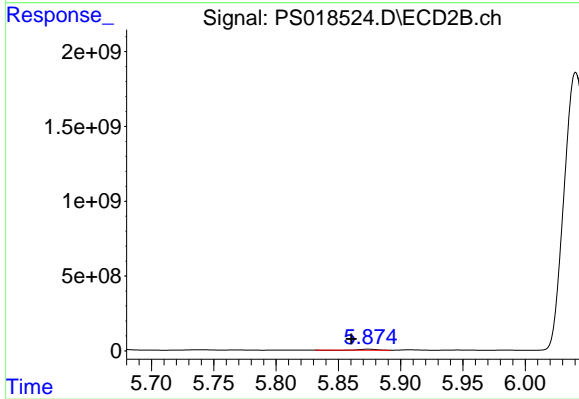
#1 Dalapon

R.T.: 2.417 min
 Delta R.T.: 0.013 min
 Response: 481819331
 Conc: 563.90 ng/ml



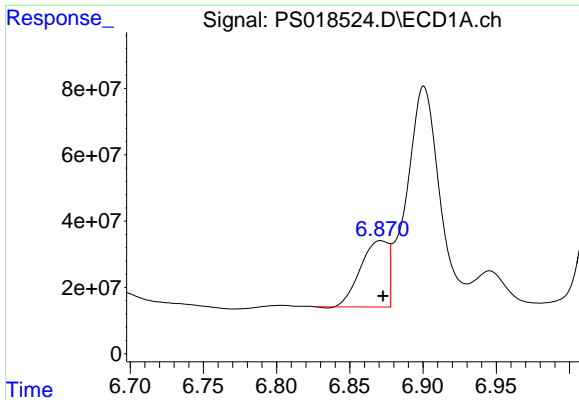
#2 3,5-DICHLOROBENZOIC ACID

R.T.: 6.280 min
 Delta R.T.: 0.007 min
 Response: -2747500
 Conc: N.D.



#2 3,5-DICHLOROBENZOIC ACID

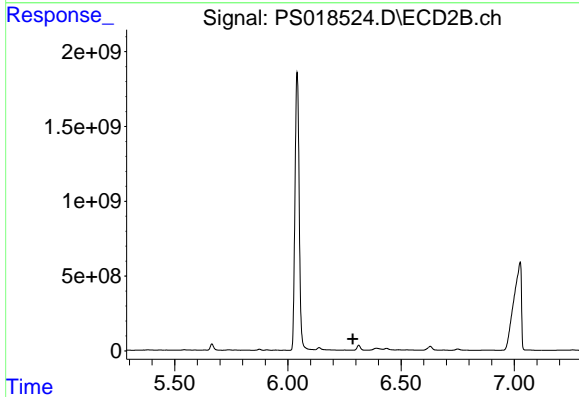
R.T.: 5.874 min
 Delta R.T.: 0.014 min
 Response: 55704108
 Conc: 54.64 ng/ml



#3 4-Nitrophenol

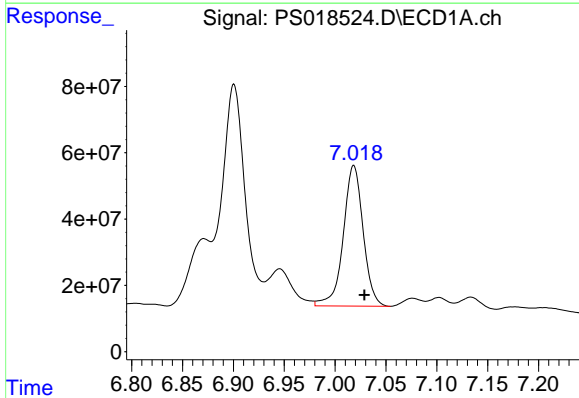
R.T.: 6.871 min
 Delta R.T.: -0.001 min
 Response: 264074488
 Conc: 306.75 ng/ml

Instrument :
 ECD_S
 ClientSampleId :



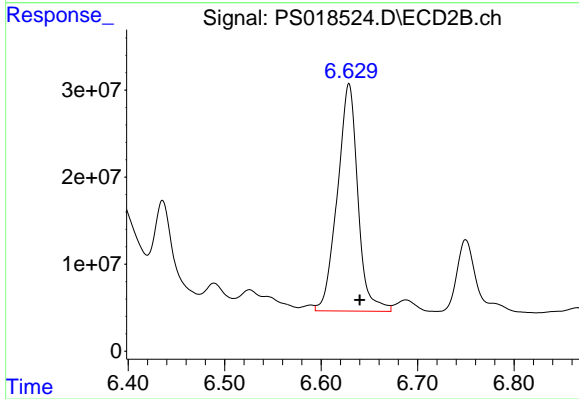
#3 4-Nitrophenol

R.T.: 6.277 min
 Delta R.T.: -0.011 min
 Response: -2110313
 Conc: N.D.



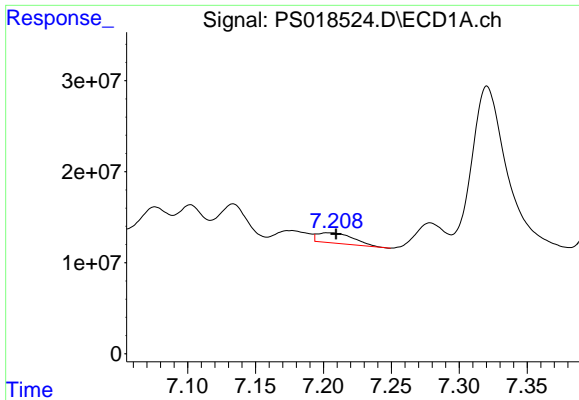
#4 2,4-DCAA

R.T.: 7.018 min
 Delta R.T.: -0.010 min
 Response: 576765029
 Conc: 346.60 ng/ml



#4 2,4-DCAA

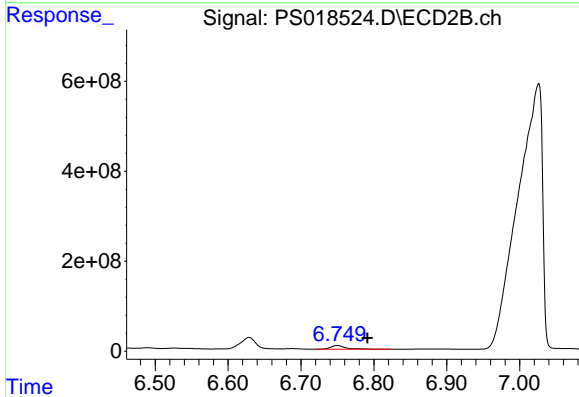
R.T.: 6.629 min
 Delta R.T.: -0.011 min
 Response: 386010509
 Conc: 579.30 ng/ml



#5 DICAMBA

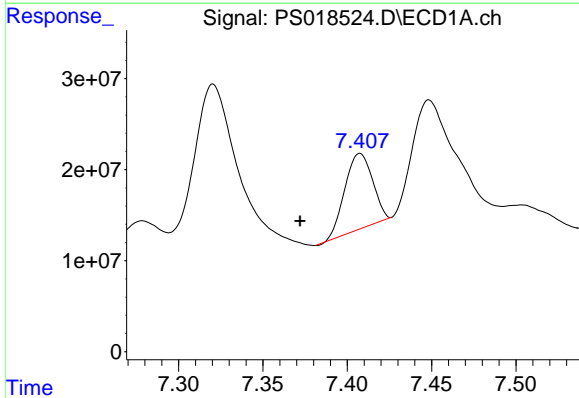
R.T.: 7.205 min
 Delta R.T.: -0.004 min
 Response: 20507798
 Conc: 3.12 ng/ml

Instrument :
 ECD_S
 ClientSampleId :



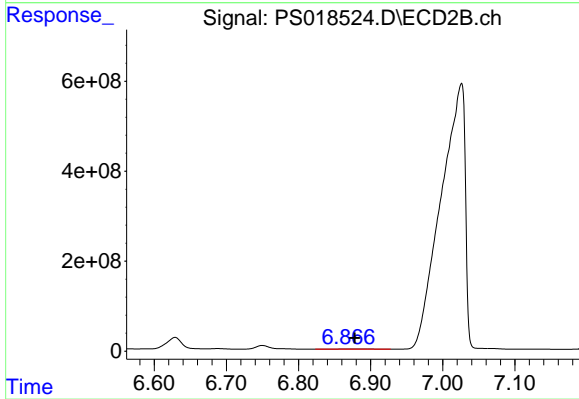
#5 DICAMBA

R.T.: 6.750 min
 Delta R.T.: -0.041 min
 Response: 119501089
 Conc: 42.56 ng/ml



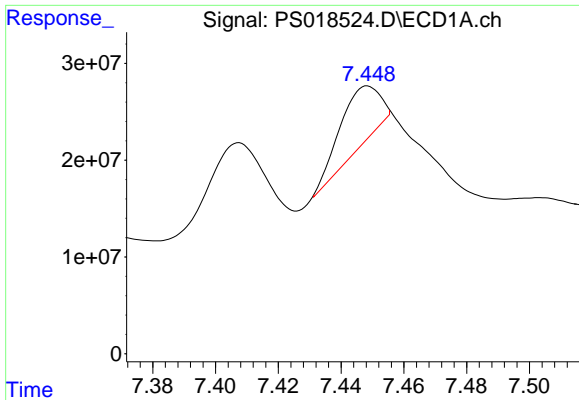
#6 MCP

R.T.: 7.408 min
 Delta R.T.: 0.036 min
 Response: 94358956
 Conc: 19.49 ug/ml



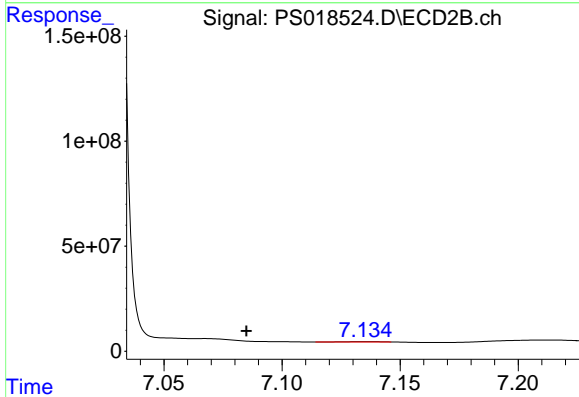
#6 MCP

R.T.: 6.866 min
 Delta R.T.: -0.012 min
 Response: 18872774
 Conc: 8.30 ug/ml

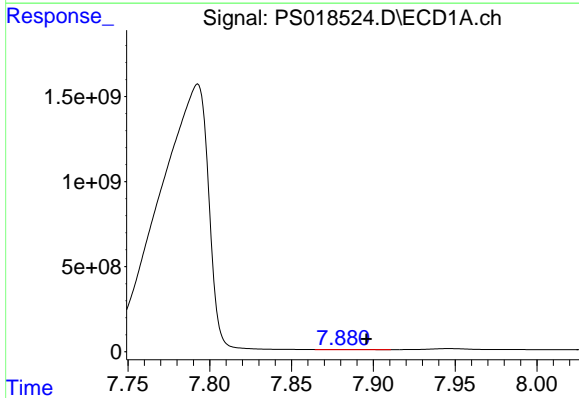


#7 MCPA
 R.T.: 7.449 min
 Delta R.T.: -0.070 min
 Response: 59336874
 Conc: 8.44 ug/ml

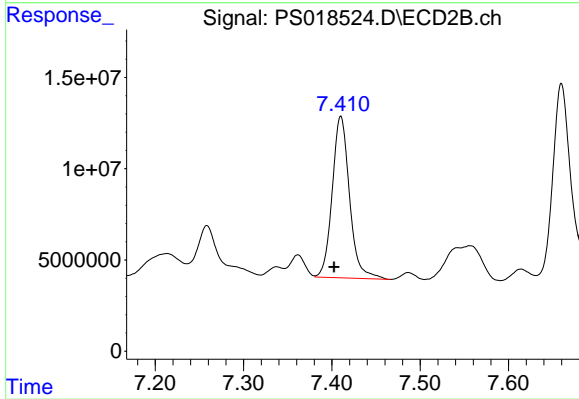
Instrument :
 ECD_S
 ClientSampleId :



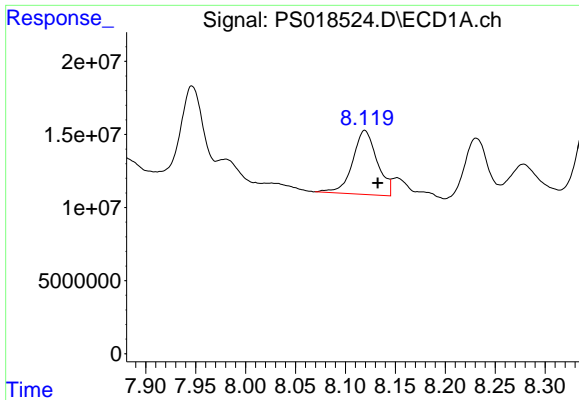
#7 MCPA
 R.T.: 7.135 min
 Delta R.T.: 0.050 min
 Response: 690171
 Conc: N.D.



#8 DICHLORPROP
 R.T.: 7.879 min
 Delta R.T.: -0.016 min
 Response: 32487486
 Conc: 19.21 ng/ml



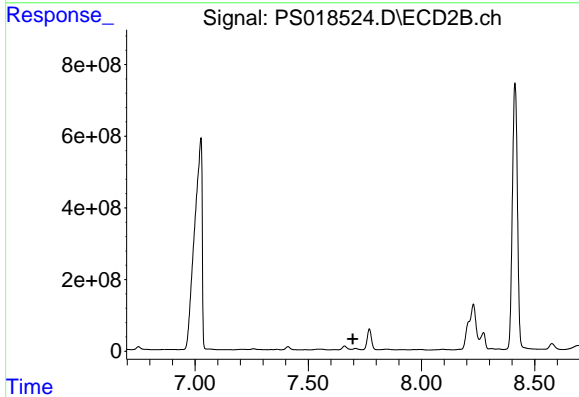
#8 DICHLORPROP
 R.T.: 7.410 min
 Delta R.T.: 0.008 min
 Response: 120643965
 Conc: 163.85 ng/ml



#9 2,4-D

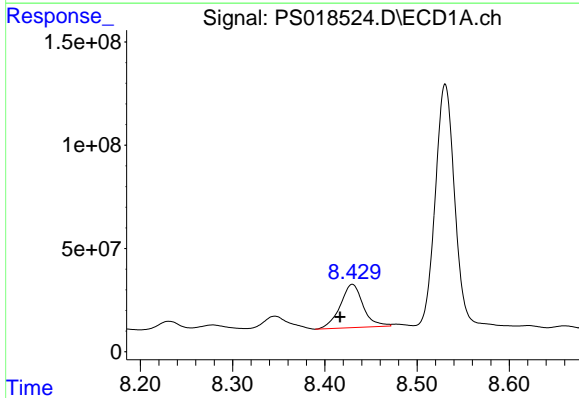
R.T.: 8.119 min
 Delta R.T.: -0.013 min
 Response: 74821764
 Conc: 36.68 ng/ml

Instrument :
 ECD_S
 ClientSampleId :



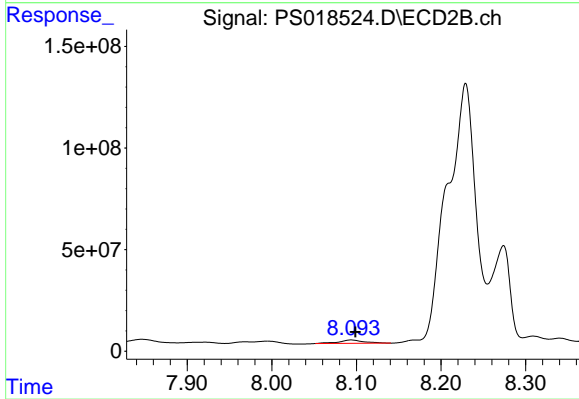
#9 2,4-D

R.T.: 7.708 min
 Delta R.T.: 0.011 min
 Response: -82964830
 Conc: N.D.



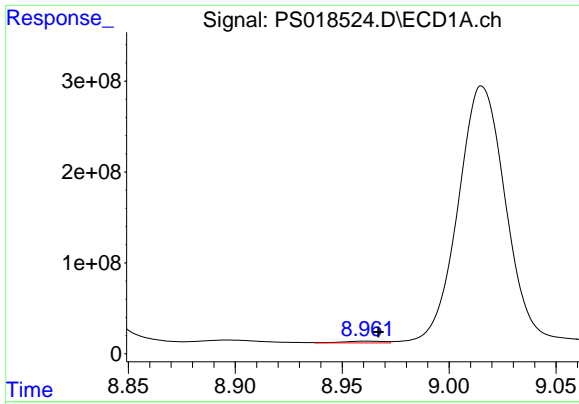
#10 Pentachlorophenol

R.T.: 8.430 min
 Delta R.T.: 0.013 min
 Response: 362962506
 Conc: 15.33 ng/ml



#10 Pentachlorophenol

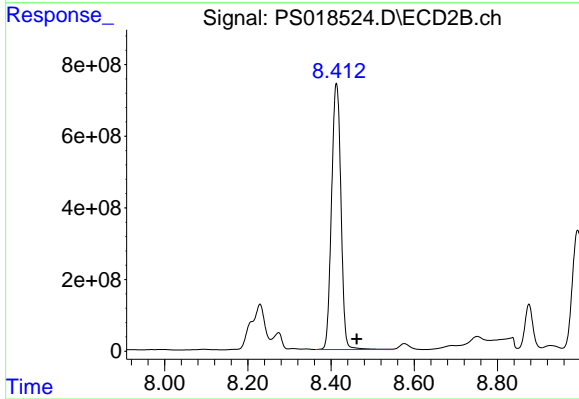
R.T.: 8.094 min
 Delta R.T.: -0.005 min
 Response: 34318823
 Conc: 3.60 ng/ml



#11 2,4,5-TP (SILVEX)

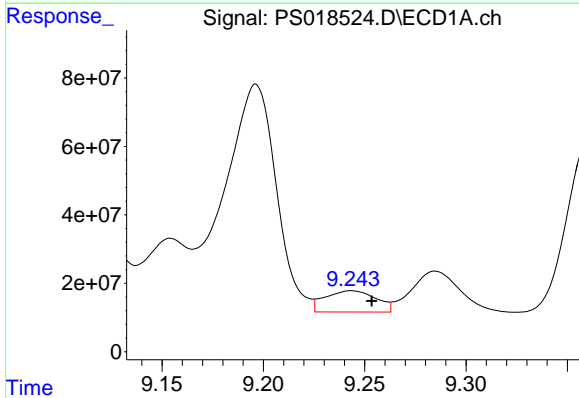
R.T.: 8.961 min
 Delta R.T.: -0.006 min
 Response: 26281539
 Conc: 2.76 ng/ml

Instrument :
 ECD_S
 ClientSampleId :



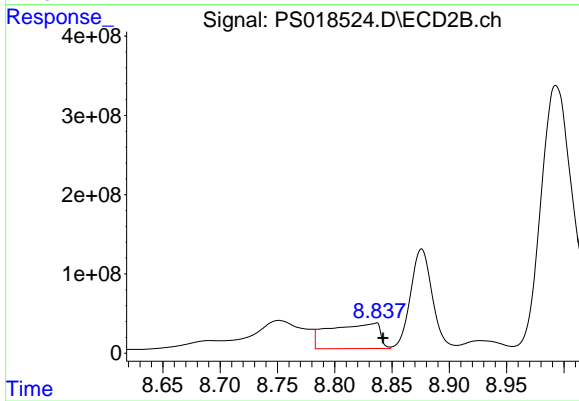
#11 2,4,5-TP (SILVEX)

R.T.: 8.413 min
 Delta R.T.: -0.049 min
 Response: 11630137900
 Conc: 2816.97 ng/ml



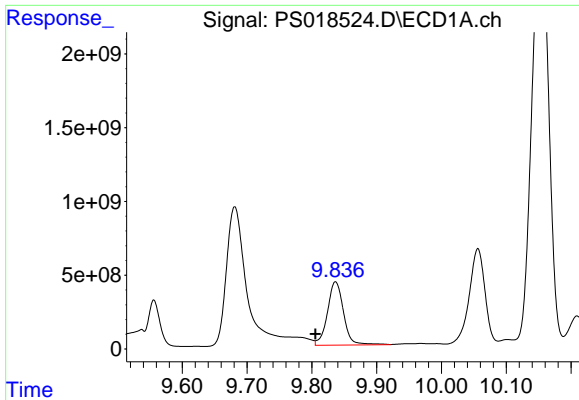
#12 2,4,5-T

R.T.: 9.243 min
 Delta R.T.: -0.010 min
 Response: 108149967
 Conc: 10.75 ng/ml



#12 2,4,5-T

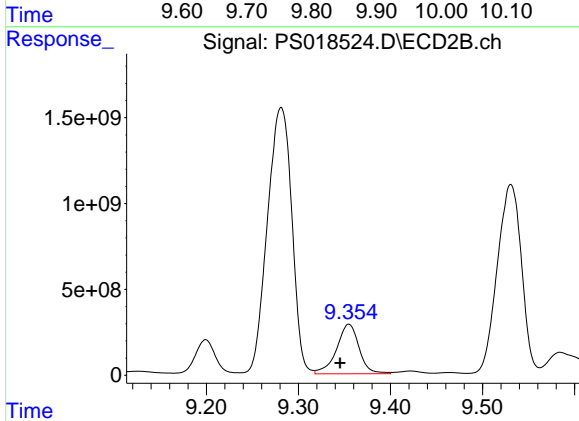
R.T.: 8.834 min
 Delta R.T.: -0.009 min
 Response: 980385011
 Conc: 249.07 ng/ml



#13 2,4-DB

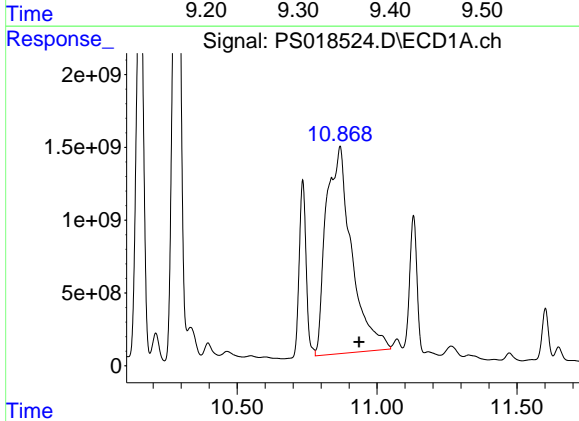
R.T.: 9.836 min
 Delta R.T.: 0.031 min
 Response: 7410469592
 Conc: 4264.27 ng/ml

Instrument :
 ECD_S
 ClientSampleId :



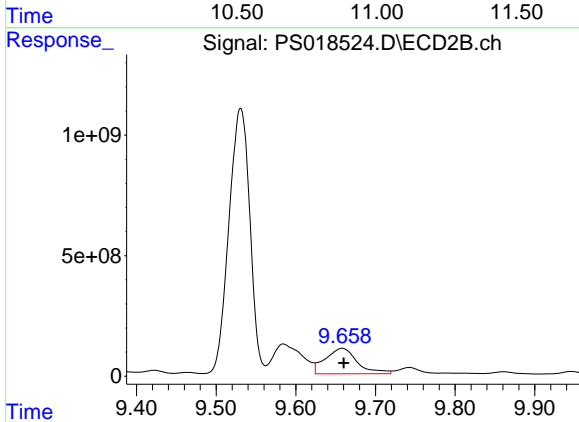
#13 2,4-DB

R.T.: 9.355 min
 Delta R.T.: 0.010 min
 Response: 4920141672
 Conc: 9106.80 ng/ml



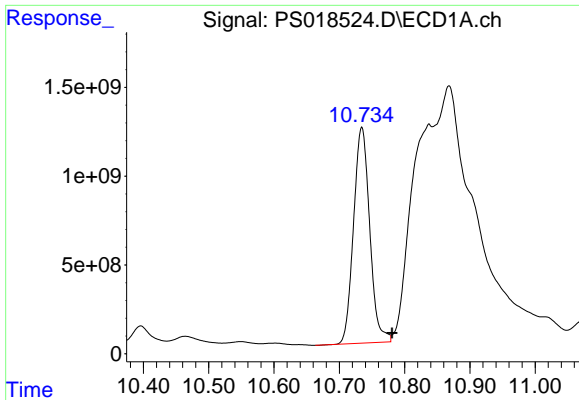
#14 DINOSEB

R.T.: 10.868 min
 Delta R.T.: -0.068 min
 Response: 90219920475
 Conc: 11612.62 ng/ml



#14 DINOSEB

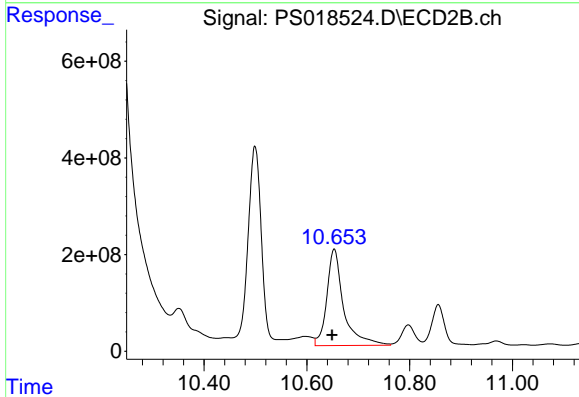
R.T.: 9.658 min
 Delta R.T.: -0.002 min
 Response: 2934180340
 Conc: 1009.35 ng/ml



#15 Picloram

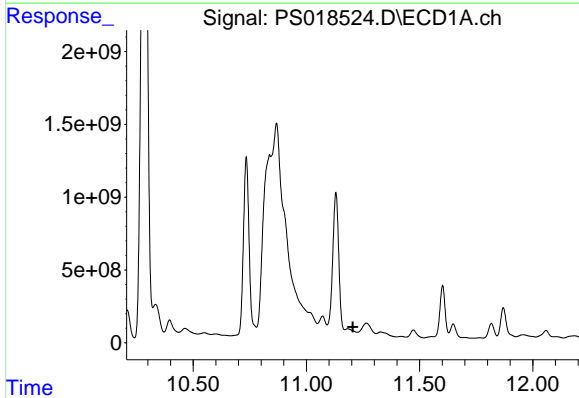
R.T.: 10.734 min
 Delta R.T.: -0.047 min
 Response: 20898251841
 Conc: 1644.75 ng/ml

Instrument :
 ECD_S
 ClientSampleId :



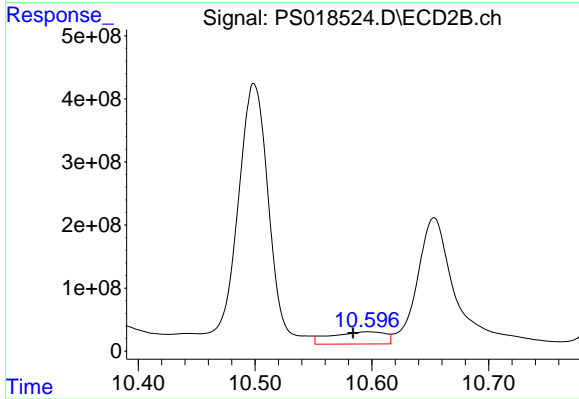
#15 Picloram

R.T.: 10.653 min
 Delta R.T.: 0.004 min
 Response: 4526774048
 Conc: 782.78 ng/ml



#16 DCPA

R.T.: 11.183 min
 Delta R.T.: -0.022 min
 Response: -3110354864
 Conc: N.D.



#16 DCPA

R.T.: 10.597 min
 Delta R.T.: 0.013 min
 Response: 622077929
 Conc: 125.28 ng/ml