

Data Path : Z:\pestpcbsrv\HPCHEM1\ECD_S\Data\PS031125\
 Data File : PS029388.D
 Signal(s) : Signal #1: ECD1A.ch Signal #2: ECD2B.ch
 Acq On : 11 Mar 2025 23:55
 Operator : AR\AJ
 Sample : Q1534-01
 Misc :
 ALS Vial : 17 Sample Multiplier: 1

Instrument :
 ECD_S
ClientSampleId :
 OR-636-COMP-16

Integration File signal 1: autoint1.e
 Integration File signal 2: autoint2.e
 Quant Time: Mar 12 04:39:27 2025
 Quant Method : Z:\pestpcbsrv\HPCHEM1\ECD_S\Method\PS022125.M
 Quant Title : 8080.M
 QLast Update : Sat Feb 22 01:02:20 2025
 Response via : Initial Calibration
 Integrator: ChemStation

Volume Inj. : 1 µl
 Signal #1 Phase : ZB-MR1 Signal #2 Phase: ZB-MR2
 Signal #1 Info : 30M x 0.32mm x0.5 Signal #2 Info : 30M x 0.32mm x 0.25µm

Compound	RT#1	RT#2	Resp#1	Resp#2	ng/ml	ng/ml

System Monitoring Compounds						
4) S 2,4-DCAA	7.156	7.622	1202.6E6	230.1E6	291.853	244.654

Target Compounds

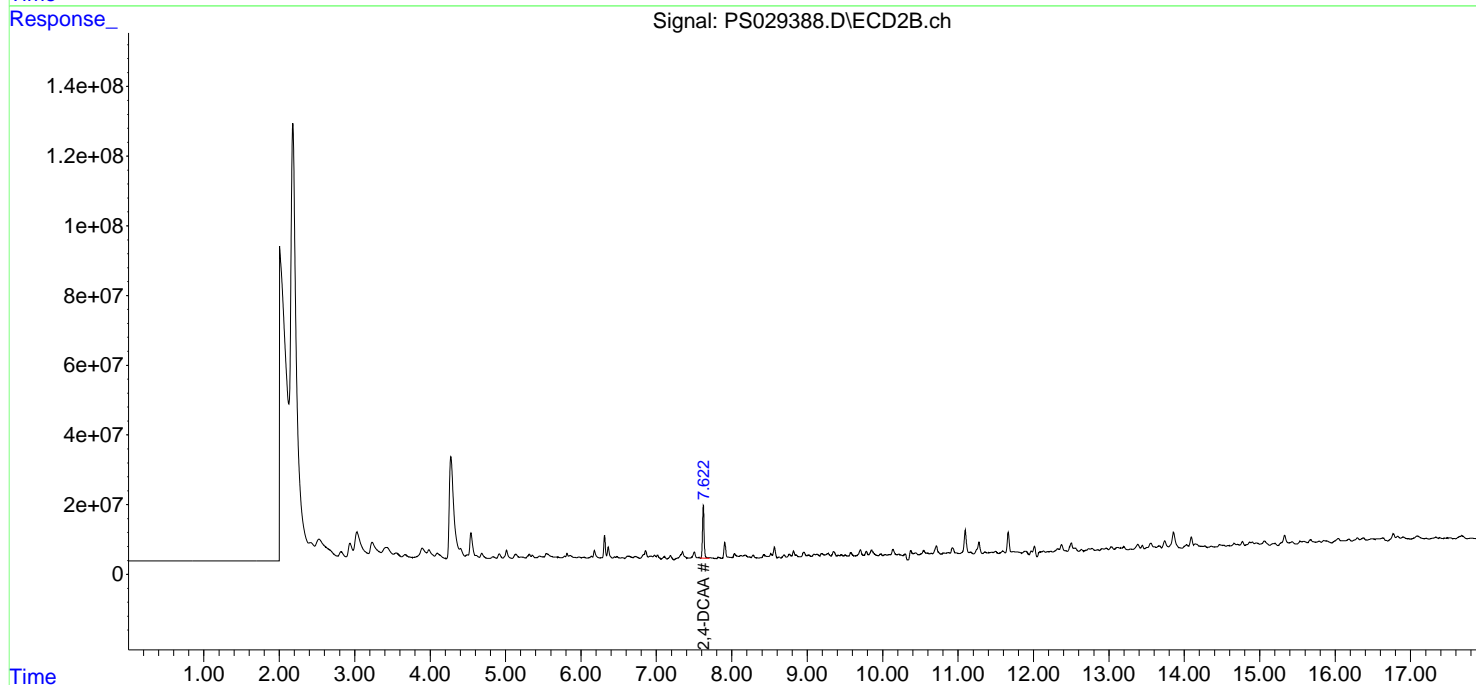
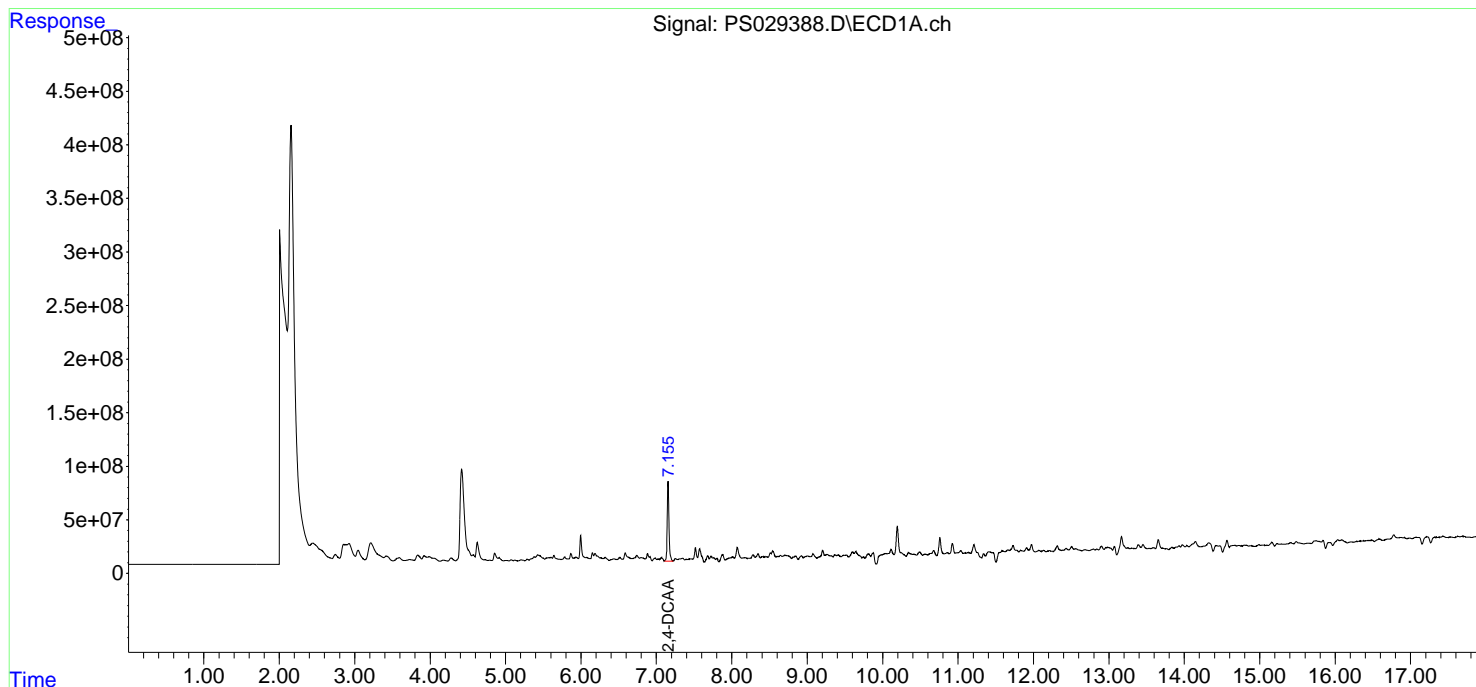
(f)=RT Delta > 1/2 Window (#)=Amounts differ by > 25% (m)=manual int.

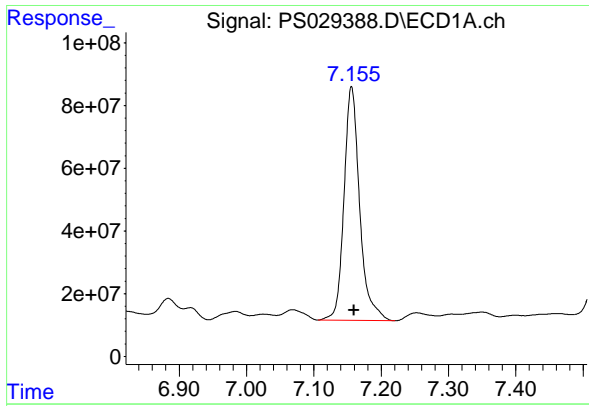
Data Path : Z:\pestpcbsrv\HPCHEM1\ECD_S\Data\PS031125\
 Data File : PS029388.D
 Signal(s) : Signal #1: ECD1A.ch Signal #2: ECD2B.ch
 Acq On : 11 Mar 2025 23:55
 Operator : AR\AJ
 Sample : Q1534-01
 Misc :
 ALS Vial : 17 Sample Multiplier: 1

Instrument :
 ECD_S
 ClientSampleId :
 OR-636-COMP-16

Integration File signal 1: autoint1.e
 Integration File signal 2: autoint2.e
 Quant Time: Mar 12 04:39:27 2025
 Quant Method : Z:\pestpcbsrv\HPCHEM1\ECD_S\Method\PS022125.M
 Quant Title : 8080.M
 QLast Update : Sat Feb 22 01:02:20 2025
 Response via : Initial Calibration
 Integrator: ChemStation

Volume Inj. : 1 µl
 Signal #1 Phase : ZB-MR1 Signal #2 Phase: ZB-MR2
 Signal #1 Info : 30M x 0.32mm x 0.5 Signal #2 Info : 30M x 0.32mm x 0.25µm

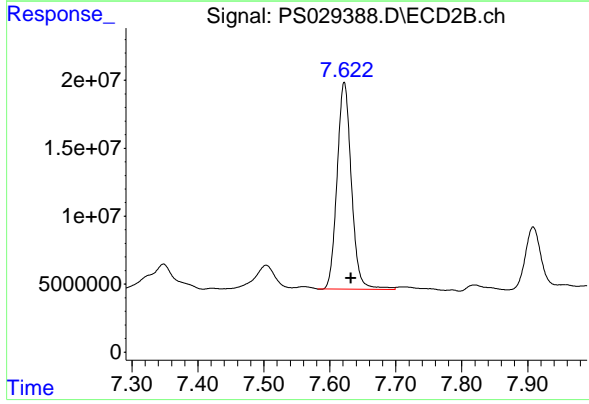




#4 2,4-DCAA

R.T.: 7.156 min
Delta R.T.: -0.004 min
Response: 1202604966
Conc: 291.85 ng/ml

Instrument :
ECD_S
ClientSampleId :
OR-636-COMP-16



#4 2,4-DCAA

R.T.: 7.622 min
Delta R.T.: -0.010 min
Response: 230056253
Conc: 244.65 ng/ml