

Data Path : Z:\pestpcbsrv\HPCHEM1\ECD\_S\Data\PS031220\  
 Data File : PS009269.D  
 Signal(s) : Signal #1: ECD1A.ch Signal #2: ECD2B.ch  
 Acq On : 13 Mar 2020 12:38  
 Operator : DD\AJ  
 Sample : L1752-04MSD  
 Misc :  
 ALS Vial : 56 Sample Multiplier: 1

Instrument :  
 ECD\_S  
 ClientSampleId :

Integration File signal 1: autoint1.e  
 Integration File signal 2: autoint2.e  
 Quant Time: Mar 13 14:06:34 2020  
 Quant Method : Z:\pestpcbsrv\HPCHEM1\ECD\_S\Method\PS031120.M  
 Quant Title : 8080.M  
 QLast Update : Thu Mar 12 07:13:24 2020  
 Response via : Initial Calibration  
 Integrator: ChemStation

Volume Inj. : 2 µl  
 Signal #1 Phase : Rtx-CLPesticides Signal #2 Phase: Rtx-CLPesticides2  
 Signal #1 Info : 30M x 0.32mm x0.5 Signal #2 Info : 30M x 0.32mm x 0.25µm

	Compound	RT#1	RT#2	Resp#1	Resp#2	ng/ml	ng/ml
-----							
System Monitoring Compounds							
4) S	2,4-DCAA	7.242	6.934	382.2E6	370.6E6	690.853	674.767
Target Compounds							
1) T	Dalapon	3.049	2.633	327.6E6	434.9E6	420.114	552.329 #
2) T	3,5-DICHL...	6.450	6.079	546.4E6	555.4E6	723.965	682.886
3) T	4-Nitroph...	7.073	6.537	17911388	13017681	75.033	40.911 #
5) T	DICAMBA	7.435	7.105	1416.8E6	1492.7E6	665.760	650.242
6) T	MCP P	7.605	7.203	129.3E6	125.6E6	52.544	69.030 #
7) T	MCPA	7.755	7.419	175.4E6	181.3E6	57.582	67.189
8) T	DICHLORPROP	8.129	7.733	374.5E6	433.3E6	726.077	781.013
9) T	2,4-D	8.358	8.027	435.3E6	540.7E6	825.581	822.480
10) T	Pentachlo...	8.671	8.460	4989.2E6	5285.2E6	709.576	696.333
11) T	2,4,5-TP ...	9.221	8.821	2070.3E6	2172.6E6	755.259	728.795
12) T	2,4,5-T	9.505	9.200	1821.6E6	2108.4E6	716.062	714.173
13) T	2,4-DB	10.059	9.708	227.5E6	283.4E6	657.532	746.641
14) T	DINOSEB	11.225	10.043	1423.1E6	1545.1E6	696.193	703.430
15) T	Picloram	11.038	11.023	1976.4E6	2675.5E6	651.215	657.023
16) T	DCPA	11.489	10.973	1626.7E6	1972.1E6	469.290	509.199

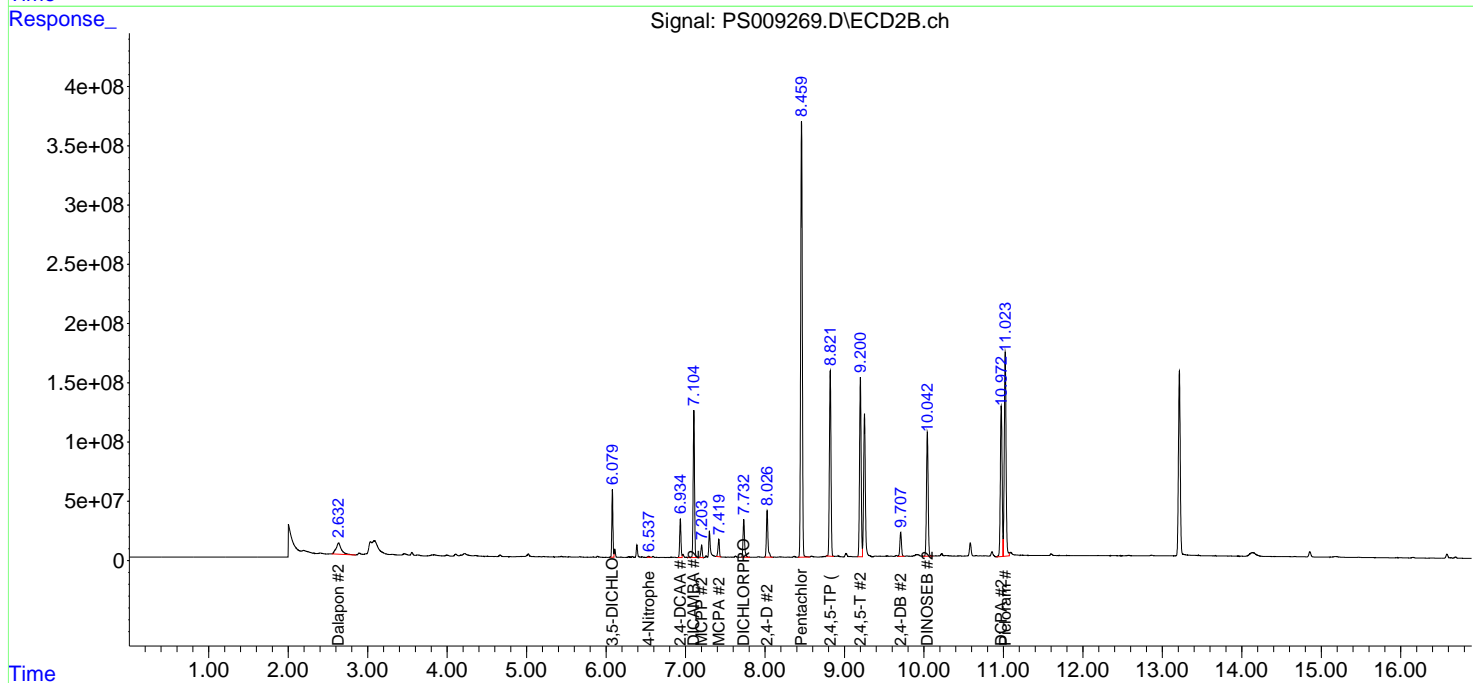
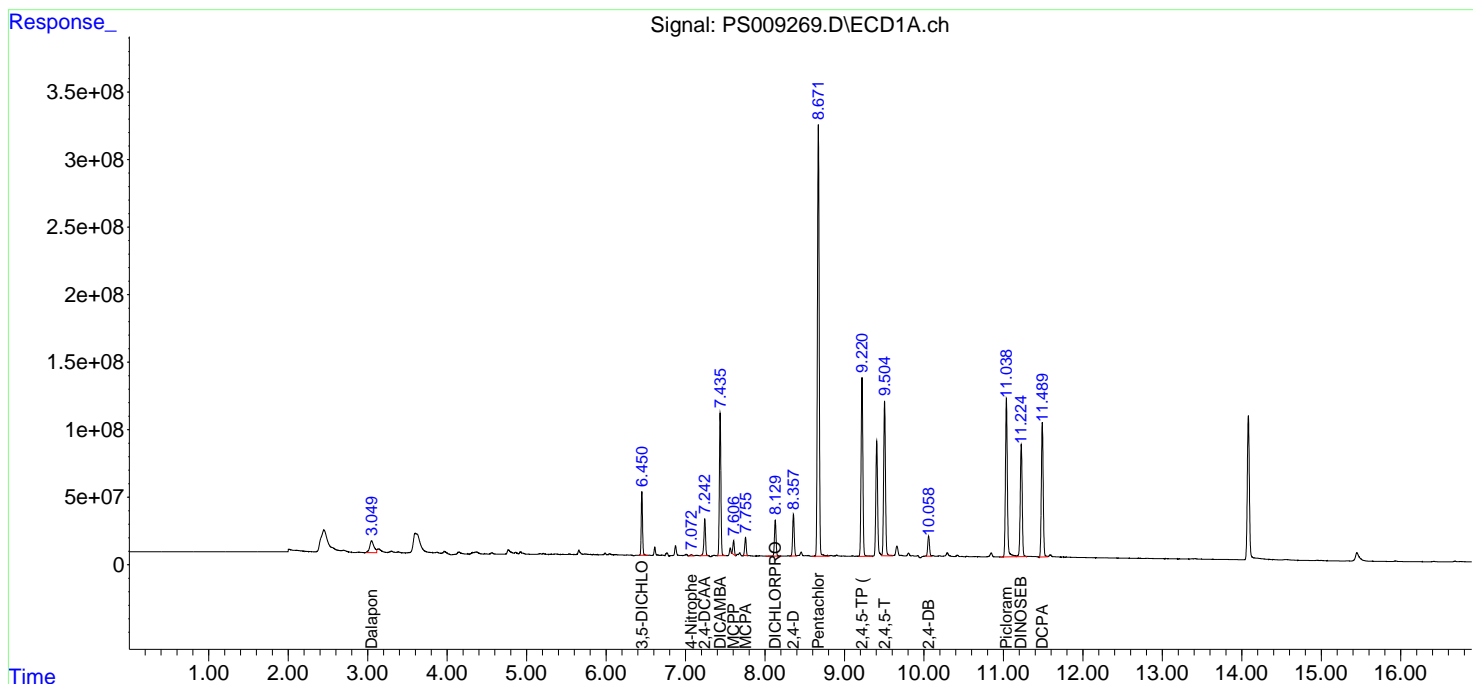
(f)=RT Delta > 1/2 Window (#)=Amounts differ by > 25% (m)=manual int.

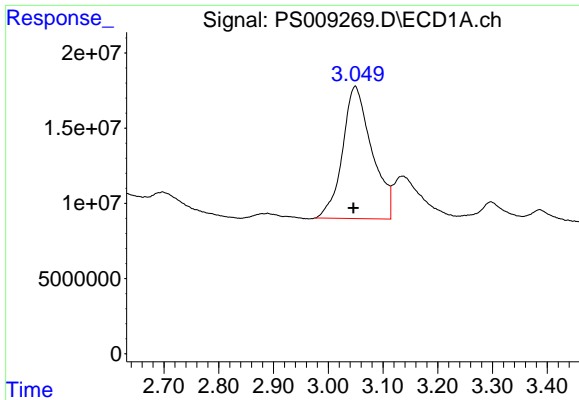
Data Path : Z:\pestpcbsrv\HPCHEM1\ECD\_S\Data\PS031220\  
 Data File : PS009269.D  
 Signal(s) : Signal #1: ECD1A.ch Signal #2: ECD2B.ch  
 Acq On : 13 Mar 2020 12:38  
 Operator : DD\AJ  
 Sample : L1752-04MSD  
 Misc :  
 ALS Vial : 56 Sample Multiplier: 1

Instrument :  
 ECD\_S  
 ClientSampled :

Integration File signal 1: autoint1.e  
 Integration File signal 2: autoint2.e  
 Quant Time: Mar 13 14:06:34 2020  
 Quant Method : Z:\pestpcbsrv\HPCHEM1\ECD\_S\Method\PS031120.M  
 Quant Title : 8080.M  
 QLast Update : Thu Mar 12 07:13:24 2020  
 Response via : Initial Calibration  
 Integrator: ChemStation

Volume Inj. : 2 µl  
 Signal #1 Phase : Rtx-CLPesticides Signal #2 Phase: Rtx-CLPesticides2  
 Signal #1 Info : 30M x 0.32mm x0.5 Signal #2 Info : 30M x 0.32mm x 0.25µm

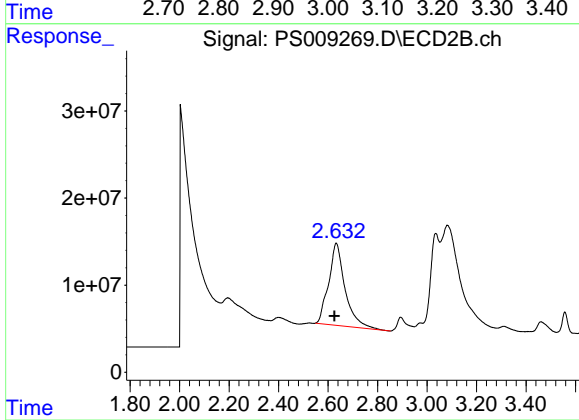




#1 Dalapon

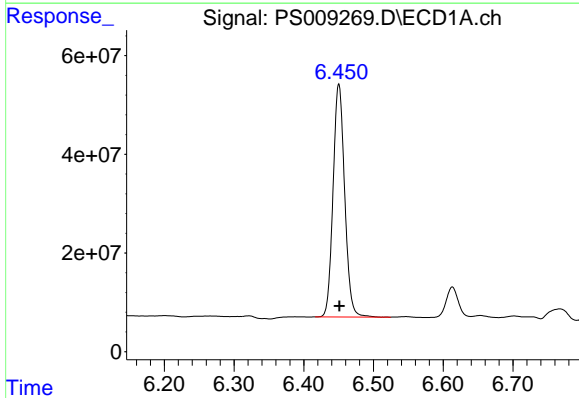
R.T.: 3.049 min  
Delta R.T.: 0.003 min  
Response: 327619393  
Conc: 420.11 ng/ml

Instrument :  
ECD\_S  
ClientSampleId :



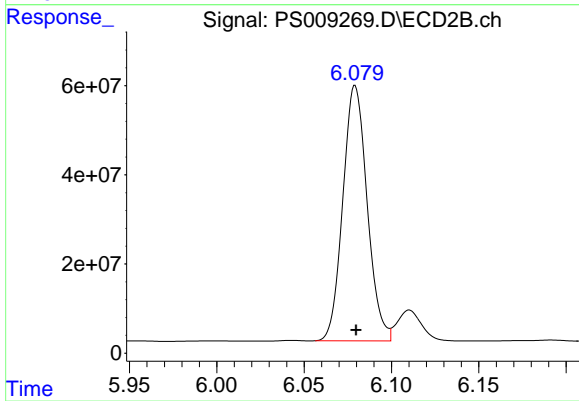
#1 Dalapon

R.T.: 2.633 min  
Delta R.T.: 0.007 min  
Response: 434883017  
Conc: 552.33 ng/ml



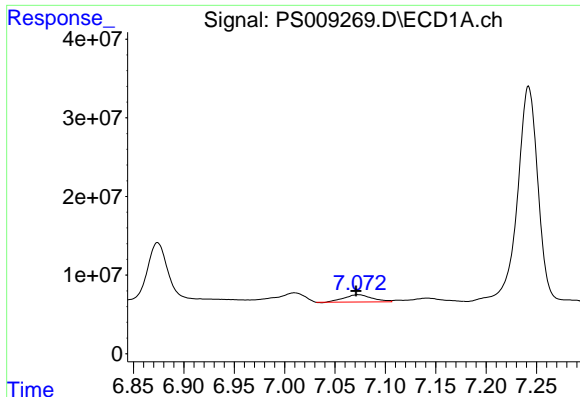
#2 3,5-DICHLOROBENZOIC ACID

R.T.: 6.450 min  
Delta R.T.: 0.000 min  
Response: 546447099  
Conc: 723.96 ng/ml



#2 3,5-DICHLOROBENZOIC ACID

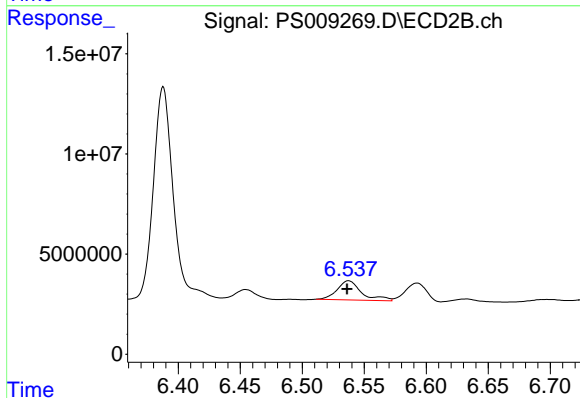
R.T.: 6.079 min  
Delta R.T.: 0.000 min  
Response: 555395584  
Conc: 682.89 ng/ml



#3 4-Nitrophenol

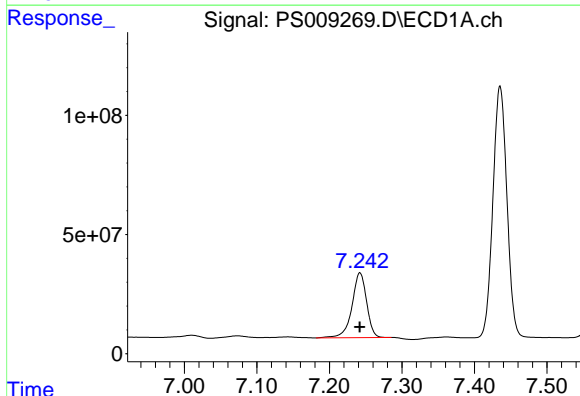
R.T.: 7.073 min  
 Delta R.T.: 0.002 min  
 Response: 17911388  
 Conc: 75.03 ng/ml

Instrument :  
 ECD\_S  
 ClientSampled :



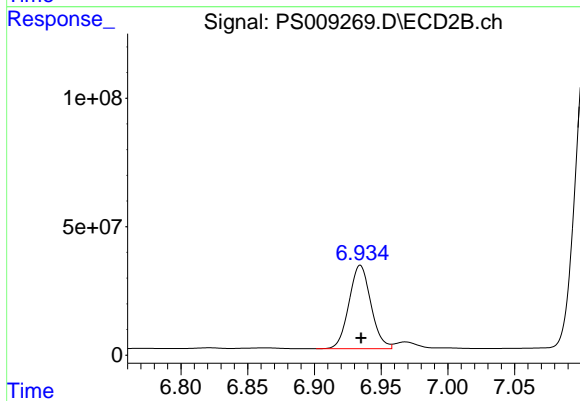
#3 4-Nitrophenol

R.T.: 6.537 min  
 Delta R.T.: 0.001 min  
 Response: 13017681  
 Conc: 40.91 ng/ml



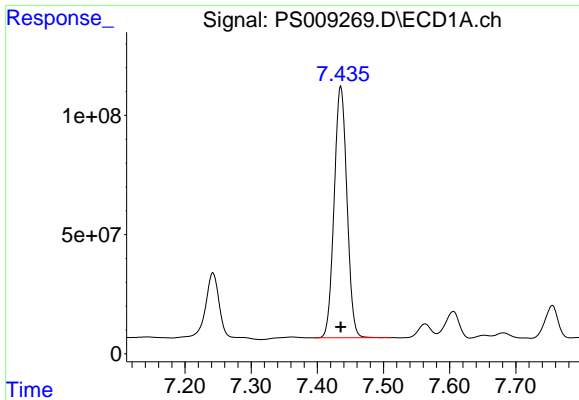
#4 2,4-DCAA

R.T.: 7.242 min  
 Delta R.T.: 0.000 min  
 Response: 382159094  
 Conc: 690.85 ng/ml



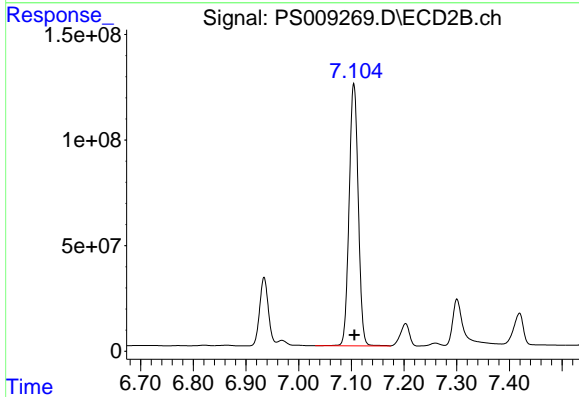
#4 2,4-DCAA

R.T.: 6.934 min  
 Delta R.T.: 0.000 min  
 Response: 370580409  
 Conc: 674.77 ng/ml

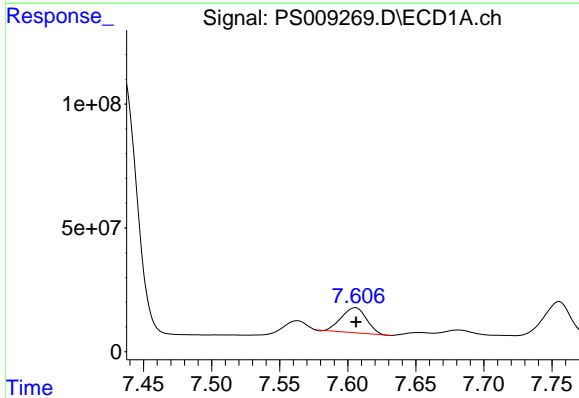


#5 DICAMBA  
 R.T.: 7.435 min  
 Delta R.T.: 0.000 min  
 Response: 1416846934  
 Conc: 665.76 ng/ml

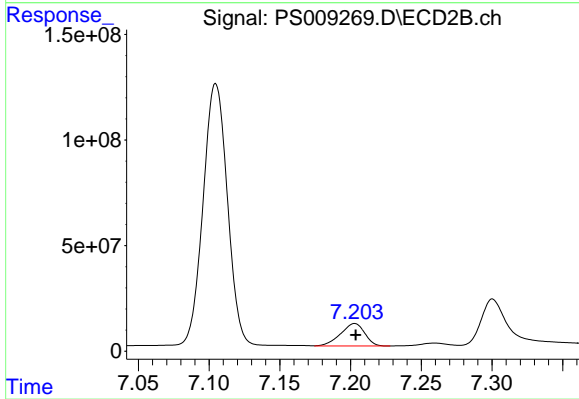
Instrument :  
 ECD\_S  
 ClientSampleId :



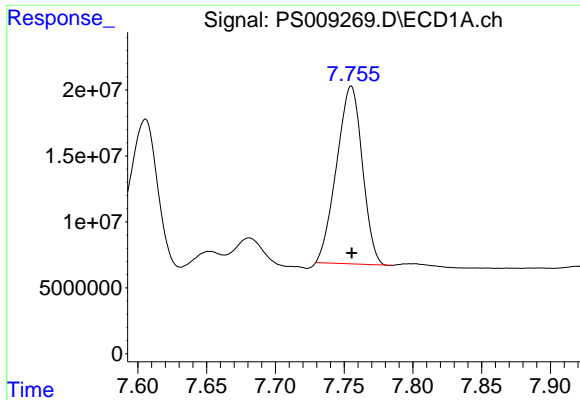
#5 DICAMBA  
 R.T.: 7.105 min  
 Delta R.T.: 0.000 min  
 Response: 1492697680  
 Conc: 650.24 ng/ml



#6 MCP  
 R.T.: 7.605 min  
 Delta R.T.: 0.000 min  
 Response: 129291962  
 Conc: 52.54 ug/ml



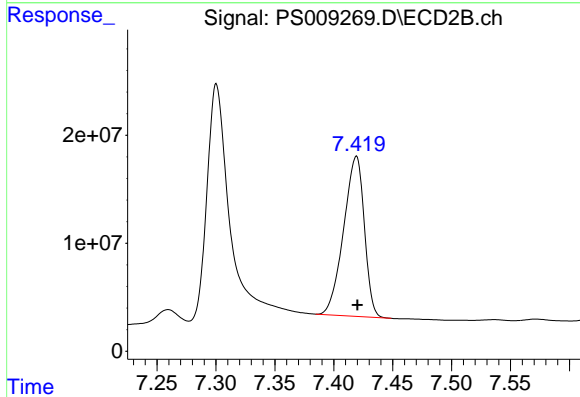
#6 MCP  
 R.T.: 7.203 min  
 Delta R.T.: 0.000 min  
 Response: 125553749  
 Conc: 69.03 ug/ml



#7 MCPA

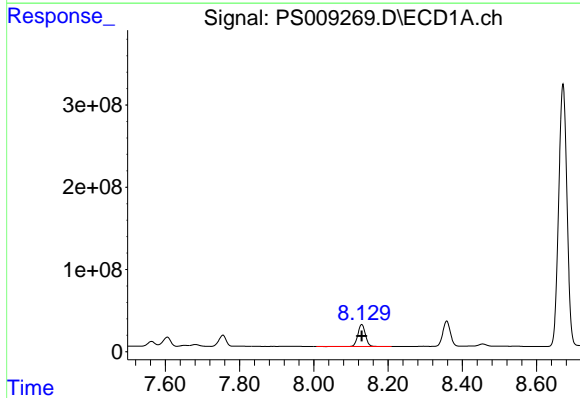
R.T.: 7.755 min  
 Delta R.T.: 0.000 min  
 Response: 175376409  
 Conc: 57.58 ug/ml

Instrument :  
 ECD\_S  
 ClientSampled :



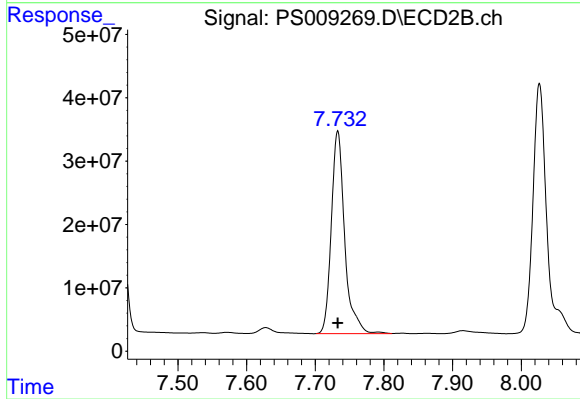
#7 MCPA

R.T.: 7.419 min  
 Delta R.T.: -0.001 min  
 Response: 181316981  
 Conc: 67.19 ug/ml



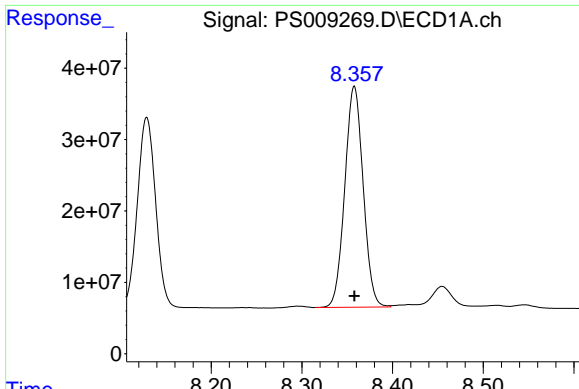
#8 DICHLORPROP

R.T.: 8.129 min  
 Delta R.T.: 0.000 min  
 Response: 374469050  
 Conc: 726.08 ng/ml



#8 DICHLORPROP

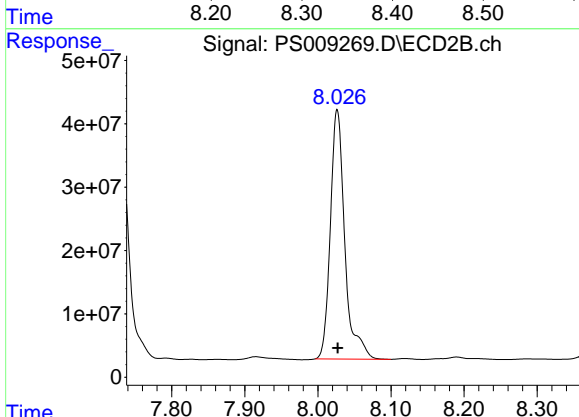
R.T.: 7.733 min  
 Delta R.T.: 0.000 min  
 Response: 433323512  
 Conc: 781.01 ng/ml



#9 2,4-D

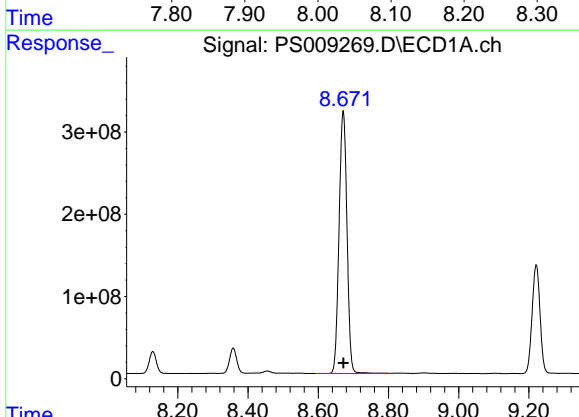
R.T.: 8.358 min  
 Delta R.T.: 0.000 min  
 Response: 435266752  
 Conc: 825.58 ng/ml

Instrument :  
 ECD\_S  
 ClientSampled :



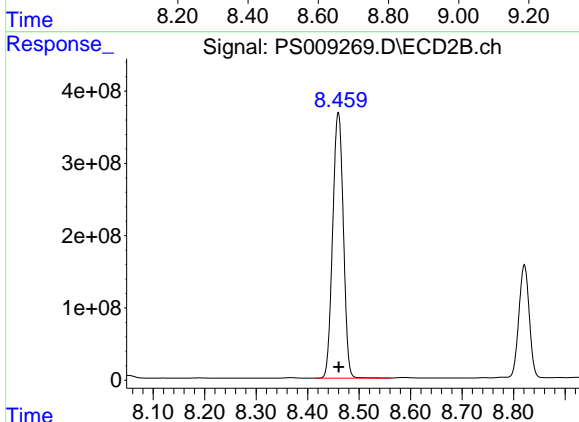
#9 2,4-D

R.T.: 8.027 min  
 Delta R.T.: 0.000 min  
 Response: 540666358  
 Conc: 822.48 ng/ml



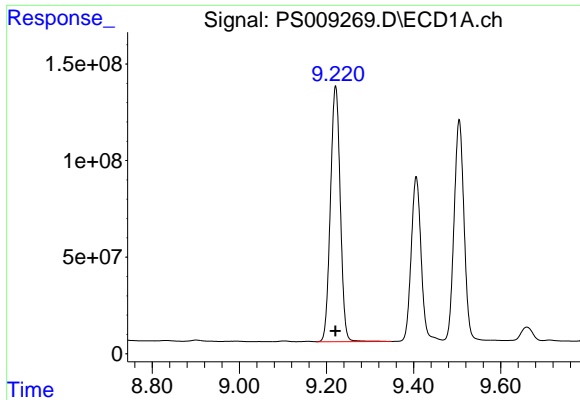
#10 Pentachlorophenol

R.T.: 8.671 min  
 Delta R.T.: 0.000 min  
 Response: 4989192750  
 Conc: 709.58 ng/ml



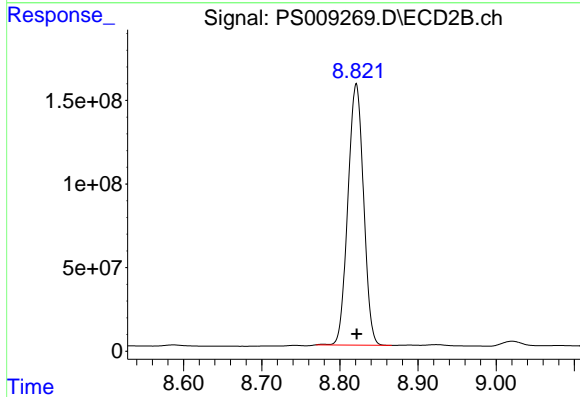
#10 Pentachlorophenol

R.T.: 8.460 min  
 Delta R.T.: -0.001 min  
 Response: 5285154951  
 Conc: 696.33 ng/ml

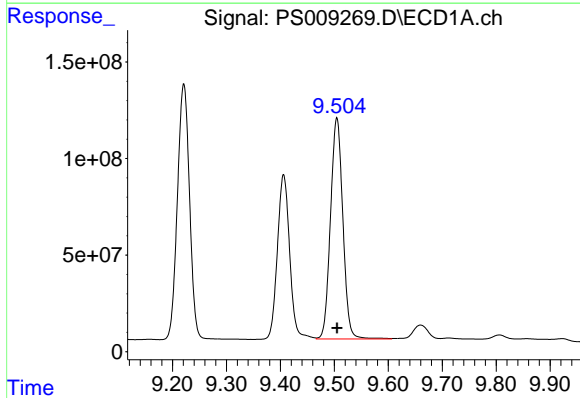


#11 2,4,5-TP (SILVEX)  
 R.T.: 9.221 min  
 Delta R.T.: 0.000 min  
 Response: 2070318701  
 Conc: 755.26 ng/ml

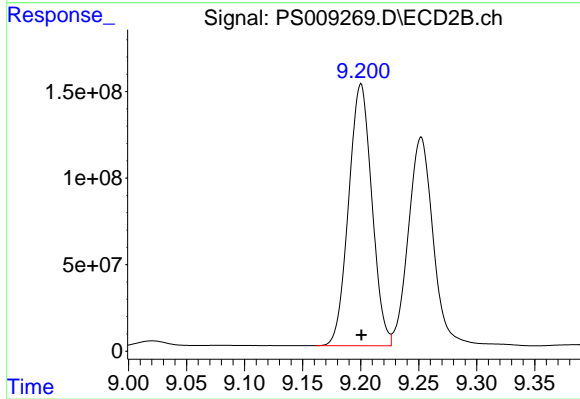
Instrument :  
 ECD\_S  
 ClientSampleId :



#11 2,4,5-TP (SILVEX)  
 R.T.: 8.821 min  
 Delta R.T.: 0.000 min  
 Response: 2172624029  
 Conc: 728.79 ng/ml

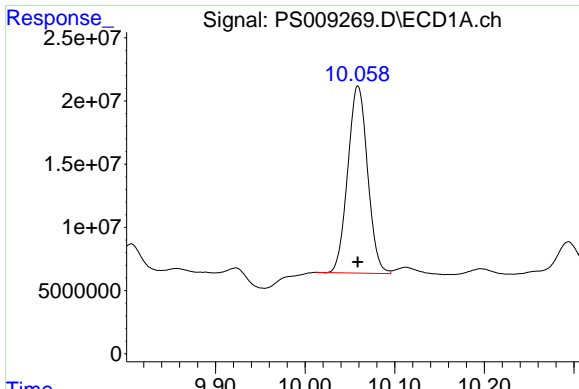


#12 2,4,5-T  
 R.T.: 9.505 min  
 Delta R.T.: 0.000 min  
 Response: 1821555048  
 Conc: 716.06 ng/ml



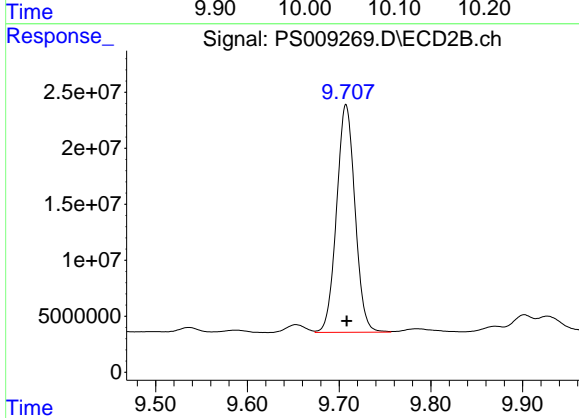
#12 2,4,5-T  
 R.T.: 9.200 min  
 Delta R.T.: 0.000 min  
 Response: 2108364579  
 Conc: 714.17 ng/ml



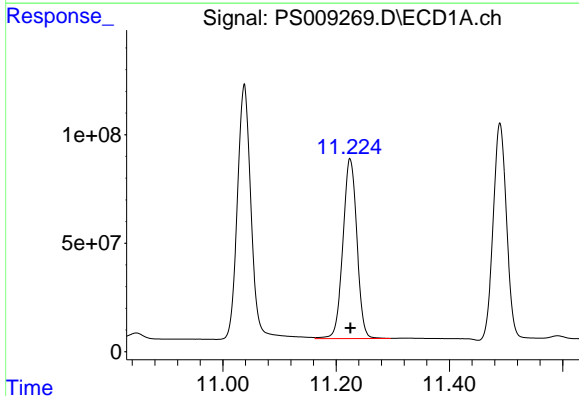


#13 2,4-DB  
R.T.: 10.059 min  
Delta R.T.: 0.000 min  
Response: 227476275  
Conc: 657.53 ng/ml

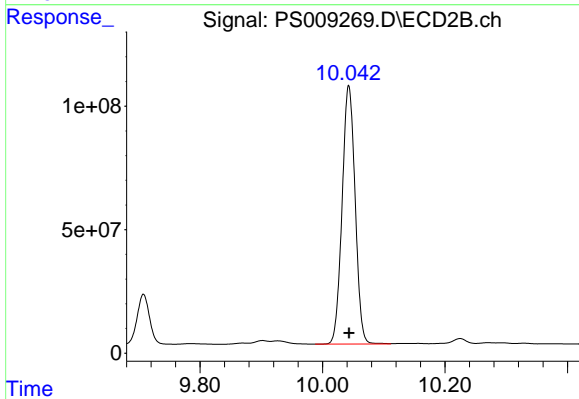
Instrument :  
ECD\_S  
ClientSampleId :



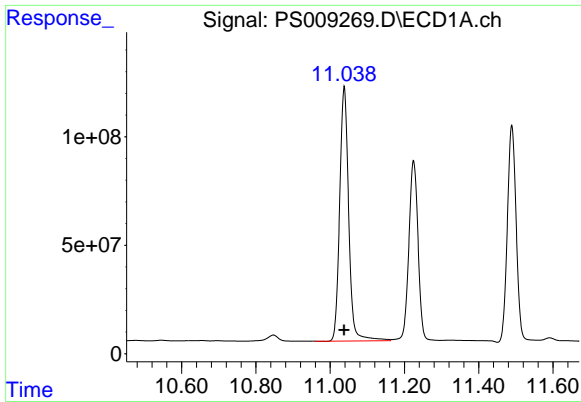
#13 2,4-DB  
R.T.: 9.708 min  
Delta R.T.: 0.000 min  
Response: 283436923  
Conc: 746.64 ng/ml



#14 DINOSEB  
R.T.: 11.225 min  
Delta R.T.: 0.000 min  
Response: 1423122731  
Conc: 696.19 ng/ml



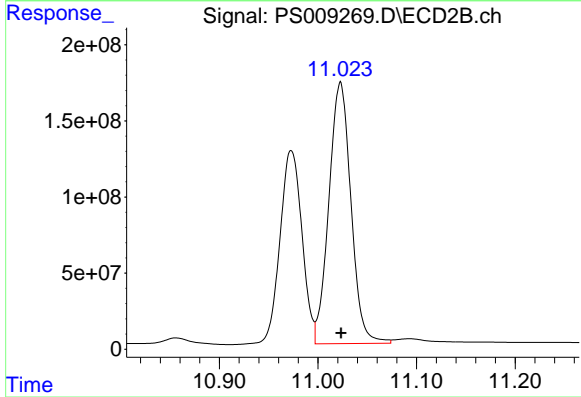
#14 DINOSEB  
R.T.: 10.043 min  
Delta R.T.: 0.000 min  
Response: 1545068536  
Conc: 703.43 ng/ml



#15 Picloram

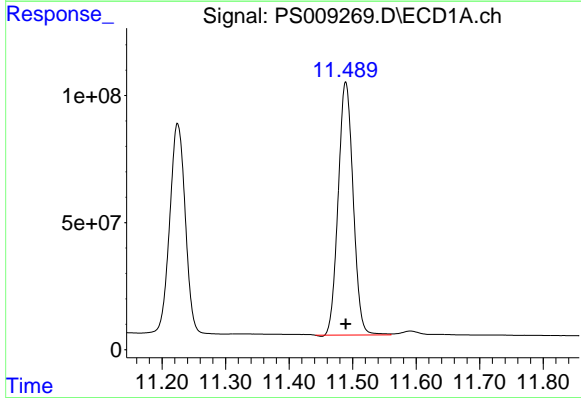
R.T.: 11.038 min  
 Delta R.T.: 0.000 min  
 Response: 1976392506  
 Conc: 651.22 ng/ml

Instrument :  
 ECD\_S  
 ClientSampled :



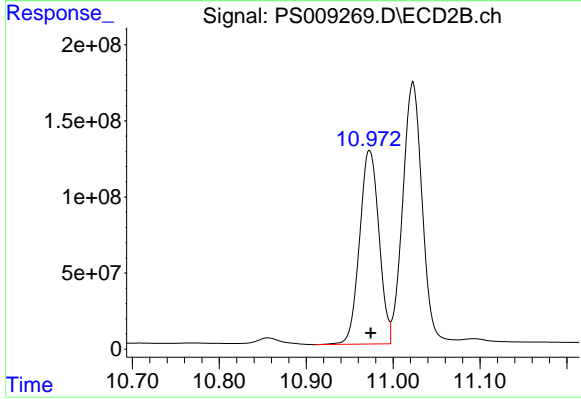
#15 Picloram

R.T.: 11.023 min  
 Delta R.T.: 0.000 min  
 Response: 2675512800  
 Conc: 657.02 ng/ml



#16 DCPA

R.T.: 11.489 min  
 Delta R.T.: 0.000 min  
 Response: 1626679716  
 Conc: 469.29 ng/ml



#16 DCPA

R.T.: 10.973 min  
 Delta R.T.: -0.001 min  
 Response: 1972148607  
 Conc: 509.20 ng/ml