

Data Path : Z:\pestpcbsrv\HPCHEM1\ECD_S\Data\PS031225\
 Data File : PS029410.D
 Signal(s) : Signal #1: ECD1A.ch Signal #2: ECD2B.ch
 Acq On : 12 Mar 2025 15:27
 Operator : AR\AJ
 Sample : Q1488-12
 Misc :
 ALS Vial : 15 Sample Multiplier: 1

Instrument :
 ECD_S
 ClientSampleId :
 ENV-104-SB02

Integration File signal 1: autoint1.e
 Integration File signal 2: autoint2.e
 Quant Time: Mar 13 02:31:00 2025
 Quant Method : Z:\pestpcbsrv\HPCHEM1\ECD_S\Method\PS022125.M
 Quant Title : 8080.M
 QLast Update : Sat Feb 22 01:02:20 2025
 Response via : Initial Calibration
 Integrator: ChemStation

Volume Inj. : 1 µl
 Signal #1 Phase : ZB-MR2 Signal #2 Phase: ZB-MR2
 Signal #1 Info : 30M x 0.32mm x0.5 Signal #2 Info : 30M x 0.32mm x 0.25µm

Compound	RT#1	RT#2	Resp#1	Resp#2	ng/ml	ng/ml

System Monitoring Compounds						
4) S 2,4-DCAA	7.155	7.619	1446.2E6	264.2E6	350.971	280.965
Target Compounds						
1) T Dalapon	2.555f	0.000	338.8E6	0	61.373	N.D. #
2) T 3,5-DICHL...	6.323	6.619	34853582	23596007	5.957	16.662 #
3) T 4-Nitroph...	6.941	0.000	8847850	0	3.781	N.D. #
5) T DICAMBA	7.308f	7.808	29360617	5726699	1.691	1.111 #
6) T MCPP	7.487f	7.968f	4674097	6538300	<MDL	2.795 #
7) T MCPA	7.675	8.162	9533720	6493098	<MDL	2.036 #
8) T DICHLORPROP	8.011f	8.561	31000076	91381121	6.744	71.461 #
9) T 2,4-D	8.240f	0.000	22414	0	<MDL	N.D. #
10) T Pentachlo...	8.558	9.362	759.6E6	203.1E6	13.016	8.825 #
12) T 2,4,5-T	9.431	10.131f	19244691	48437110	<MDL	5.900 #
13) T 2,4-DB	10.022	0.000	98589644	0	23.612	N.D. #
14) T DINOSEB	11.235f	11.115	2170755	17183617	<MDL	2.835 #
15) T Picloram	11.018	12.178	17111906	20791322	<MDL	1.798 #
16) T DCPA	11.460f	12.123	152.4E6	32405416	5.080	2.738 #

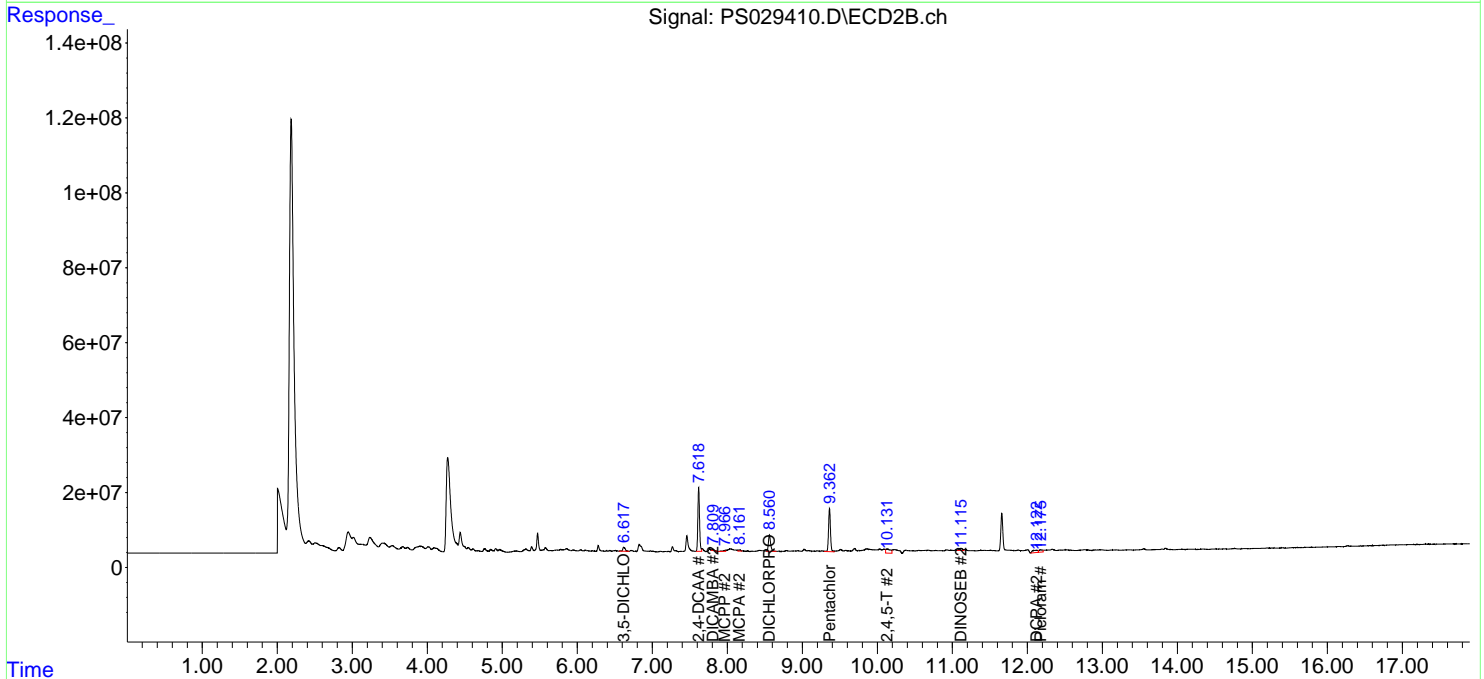
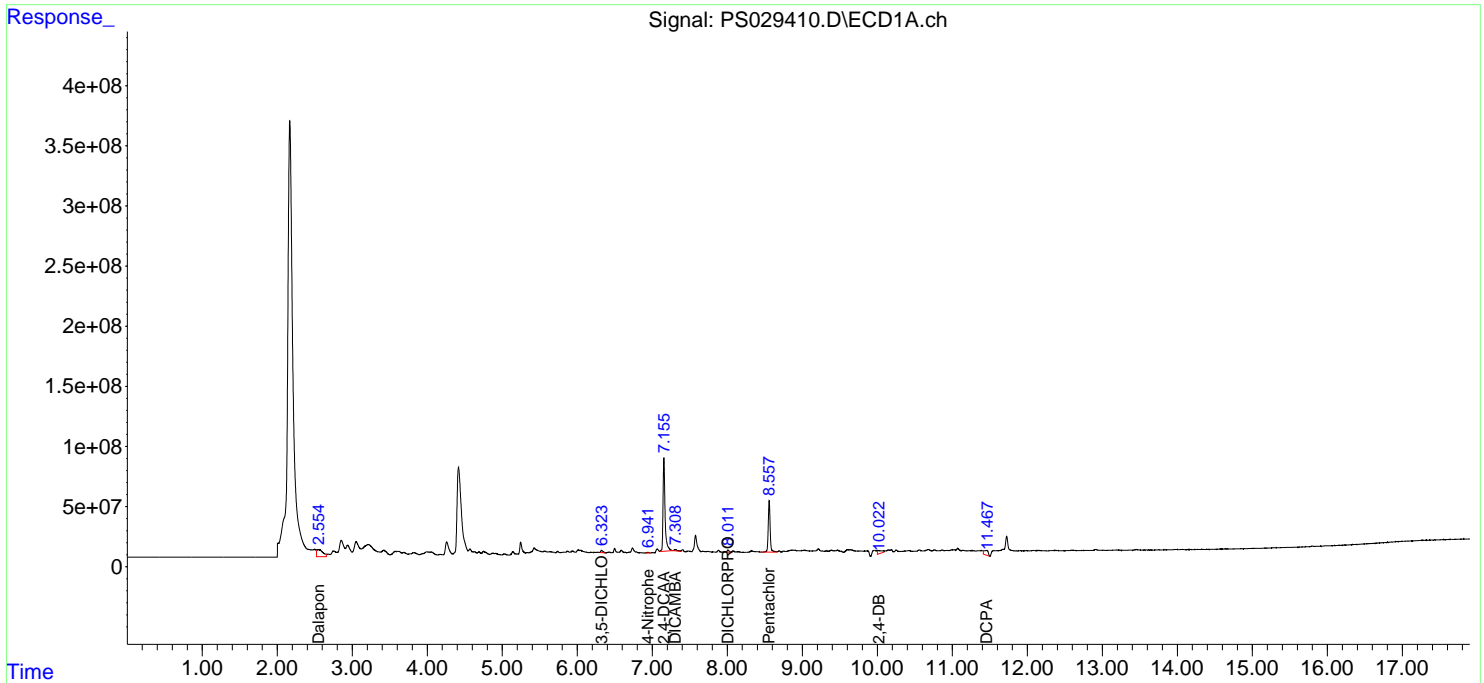
(f)=RT Delta > 1/2 Window (#)=Amounts differ by > 25% (m)=manual int.

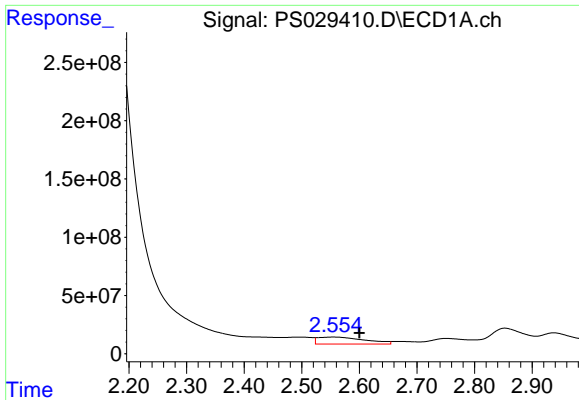
Data Path : Z:\pestpcbsrv\HPCHEM1\ECD_S\Data\PS031225\
 Data File : PS029410.D
 Signal(s) : Signal #1: ECD1A.ch Signal #2: ECD2B.ch
 Acq On : 12 Mar 2025 15:27
 Operator : AR\AJ
 Sample : Q1488-12
 Misc :
 ALS Vial : 15 Sample Multiplier: 1

Instrument :
 ECD_S
 ClientSampleId :
 ENV-104-SB02

Integration File signal 1: autoint1.e
 Integration File signal 2: autoint2.e
 Quant Time: Mar 13 02:31:00 2025
 Quant Method : Z:\pestpcbsrv\HPCHEM1\ECD_S\Method\PS022125.M
 Quant Title : 8080.M
 QLast Update : Sat Feb 22 01:02:20 2025
 Response via : Initial Calibration
 Integrator: ChemStation

Volume Inj. : 1 µl
 Signal #1 Phase : ZB-MR1 Signal #2 Phase: ZB-MR2
 Signal #1 Info : 30M x 0.32mm x0.5 Signal #2 Info : 30M x 0.32mm x 0.25µm

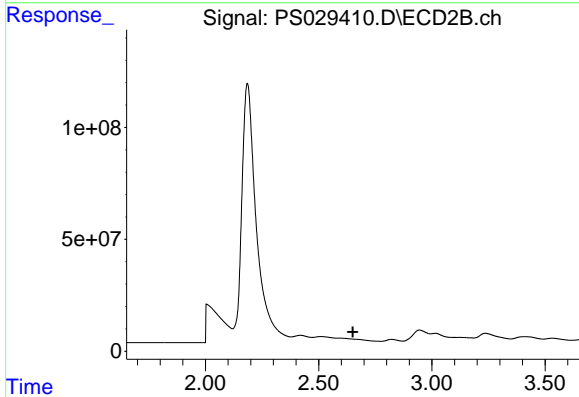




#1 Dalapon

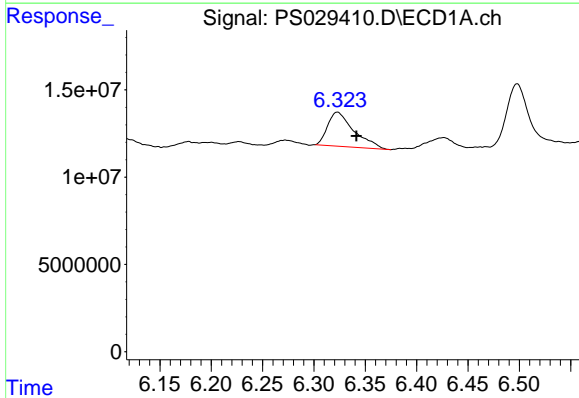
R.T.: 2.555 min
 Delta R.T.: -0.045 min
 Response: 338794420
 Conc: 61.37 ng/ml

Instrument :
 ECD_S
 ClientSampleId :
 ENV-104-SB02



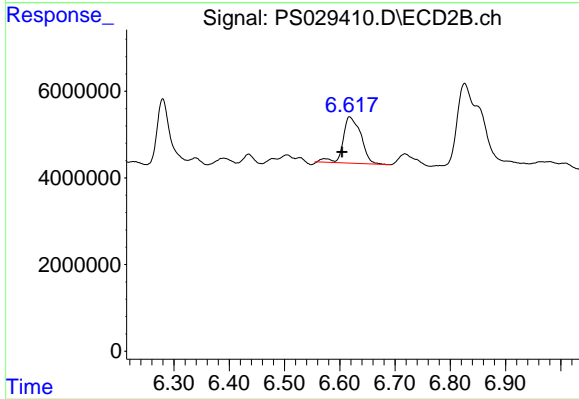
#1 Dalapon

R.T.: 0.000 min
 Exp R.T. : 2.651 min
 Response: 0
 Conc: N.D.



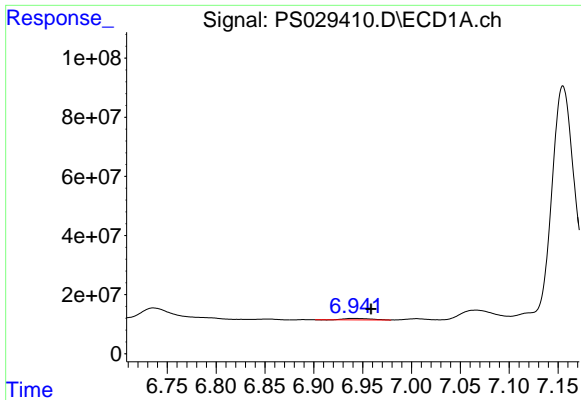
#2 3,5-DICHLOROBENZOIC ACID

R.T.: 6.323 min
 Delta R.T.: -0.019 min
 Response: 34853582
 Conc: 5.96 ng/ml



#2 3,5-DICHLOROBENZOIC ACID

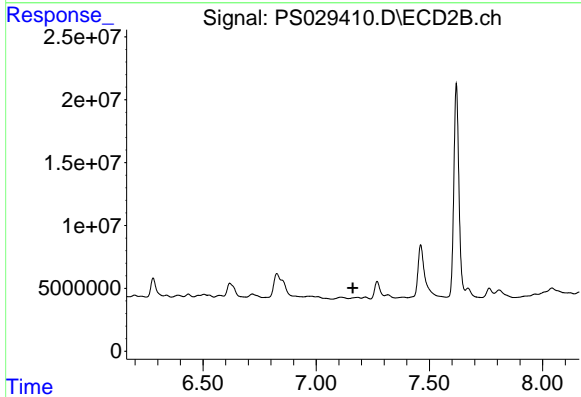
R.T.: 6.619 min
 Delta R.T.: 0.014 min
 Response: 23596007
 Conc: 16.66 ng/ml



#3 4-Nitrophenol

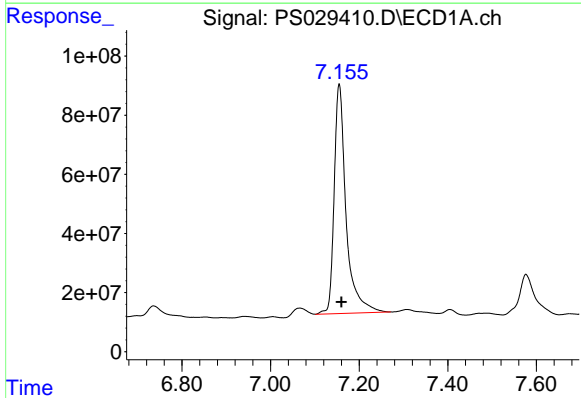
R.T.: 6.941 min
 Delta R.T.: -0.017 min
 Response: 8847850
 Conc: 3.78 ng/ml

Instrument :
 ECD_S
 ClientSampleId :
 ENV-104-SB02



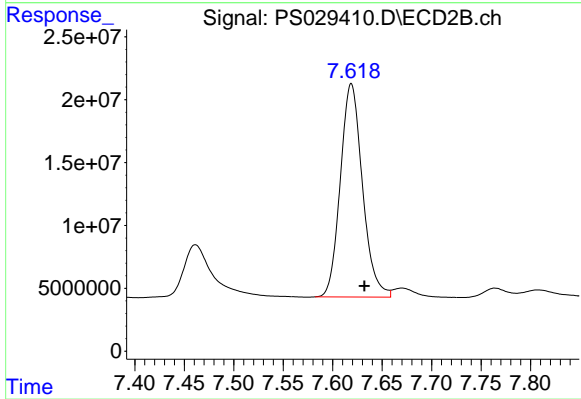
#3 4-Nitrophenol

R.T.: 0.000 min
 Exp R.T. : 7.162 min
 Response: 0
 Conc: N.D.



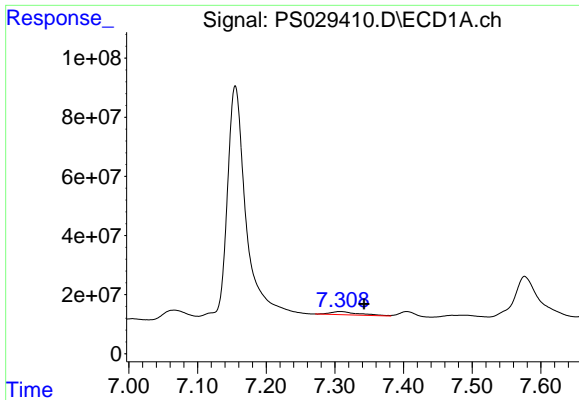
#4 2,4-DCAA

R.T.: 7.155 min
 Delta R.T.: -0.005 min
 Response: 1446203268
 Conc: 350.97 ng/ml



#4 2,4-DCAA

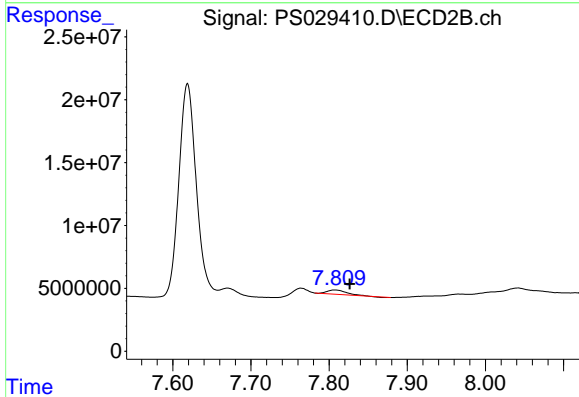
R.T.: 7.619 min
 Delta R.T.: -0.013 min
 Response: 264200374
 Conc: 280.96 ng/ml



#5 DICAMBA

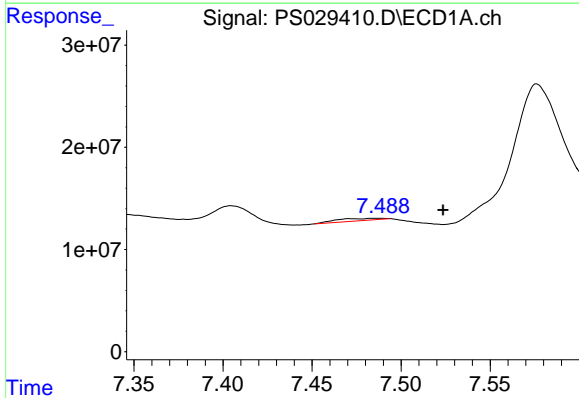
R.T.: 7.308 min
 Delta R.T.: -0.035 min
 Response: 29360617
 Conc: 1.69 ng/ml

Instrument :
 ECD_S
 ClientSampleId :
 ENV-104-SB02



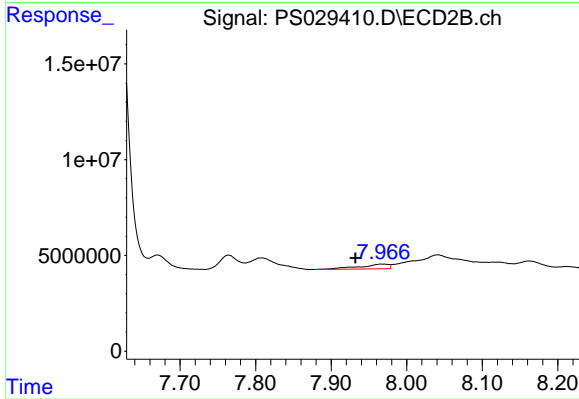
#5 DICAMBA

R.T.: 7.808 min
 Delta R.T.: -0.019 min
 Response: 5726699
 Conc: 1.11 ng/ml



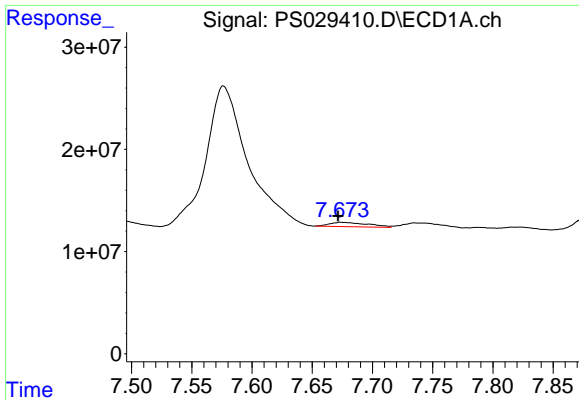
#6 MCPP

R.T.: 7.487 min
 Delta R.T.: -0.036 min
 Response: 4674097
 Conc: N.D.



#6 MCPP

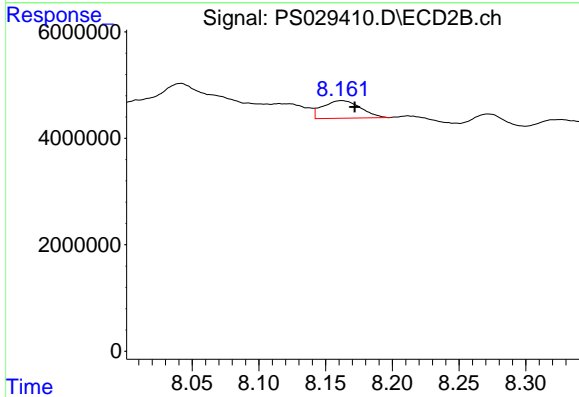
R.T.: 7.968 min
 Delta R.T.: 0.036 min
 Response: 6538300
 Conc: 2.80 ug/ml



#7 MCPA

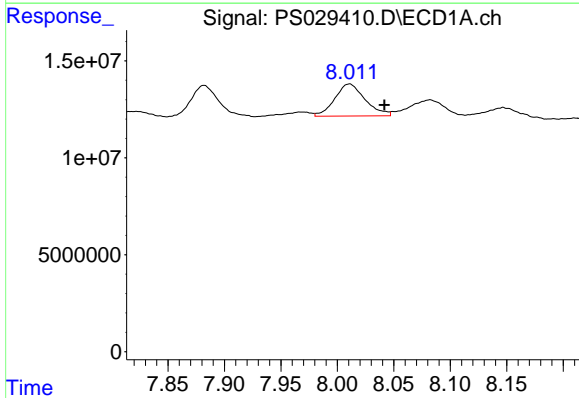
R.T.: 7.675 min
 Delta R.T.: 0.003 min
 Response: 9533720
 Conc: N.D.

Instrument :
 ECD_S
 ClientSampleId :
 ENV-104-SB02



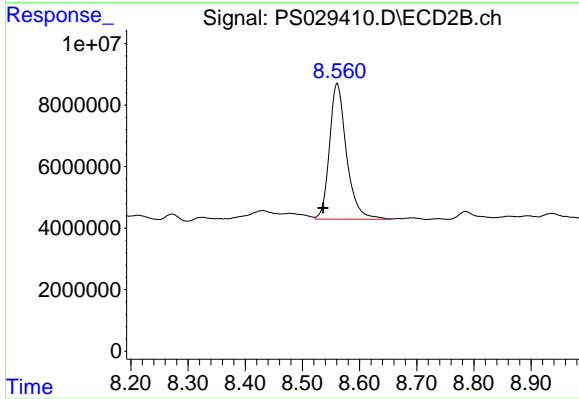
#7 MCPA

R.T.: 8.162 min
 Delta R.T.: -0.010 min
 Response: 6493098
 Conc: 2.04 ug/ml



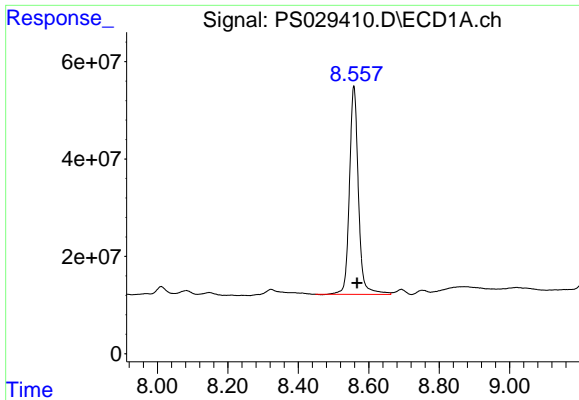
#8 DICHLORPROP

R.T.: 8.011 min
 Delta R.T.: -0.031 min
 Response: 31000076
 Conc: 6.74 ng/ml



#8 DICHLORPROP

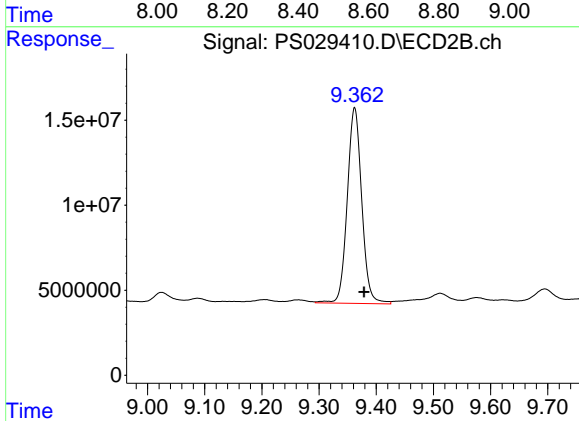
R.T.: 8.561 min
 Delta R.T.: 0.025 min
 Response: 91381121
 Conc: 71.46 ng/ml



#10 Pentachlorophenol

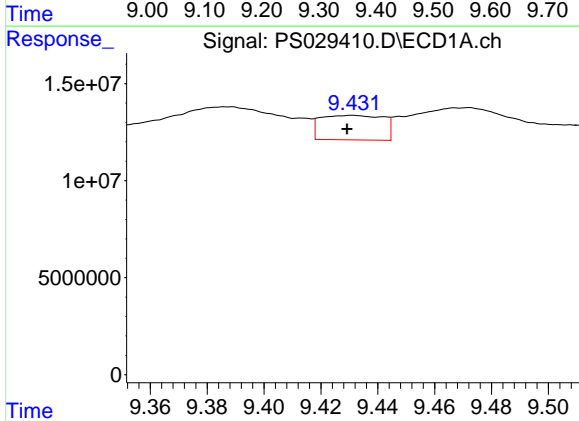
R.T.: 8.558 min
 Delta R.T.: -0.009 min
 Response: 759566124
 Conc: 13.02 ng/ml

Instrument :
 ECD_S
 ClientSampleId :
 ENV-104-SB02



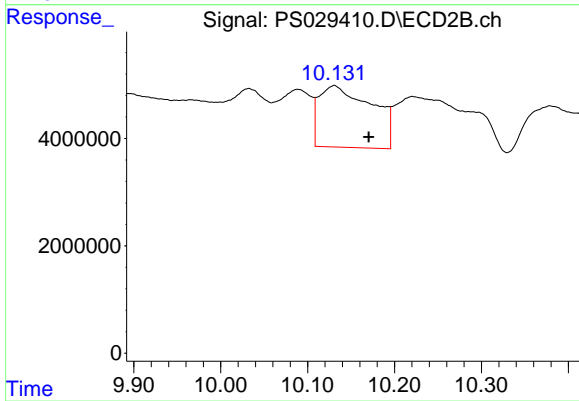
#10 Pentachlorophenol

R.T.: 9.362 min
 Delta R.T.: -0.017 min
 Response: 203093439
 Conc: 8.83 ng/ml



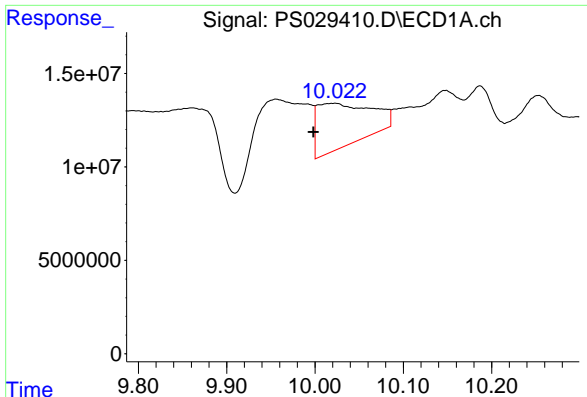
#12 2,4,5-T

R.T.: 9.431 min
 Delta R.T.: 0.002 min
 Response: 19244691
 Conc: N.D.



#12 2,4,5-T

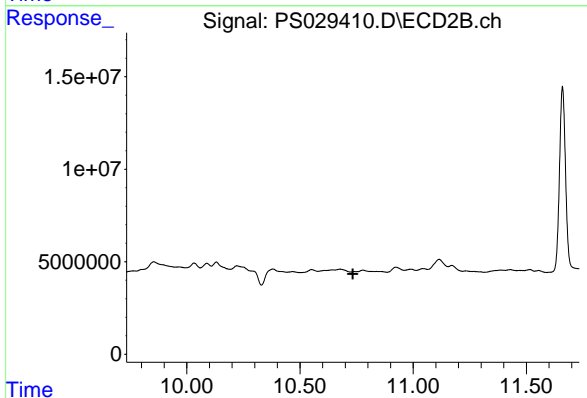
R.T.: 10.131 min
 Delta R.T.: -0.040 min
 Response: 48437110
 Conc: 5.90 ng/ml



#13 2,4-DB

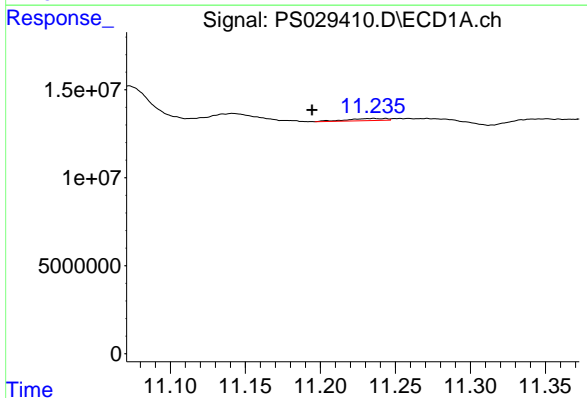
R.T.: 10.022 min
 Delta R.T.: 0.024 min
 Response: 98589644
 Conc: 23.61 ng/ml

Instrument :
 ECD_S
 ClientSampleId :
 ENV-104-SB02



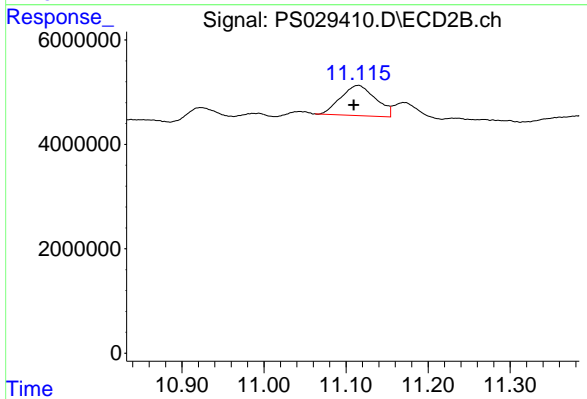
#13 2,4-DB

R.T.: 0.000 min
 Exp R.T. : 10.734 min
 Response: 0
 Conc: N.D.



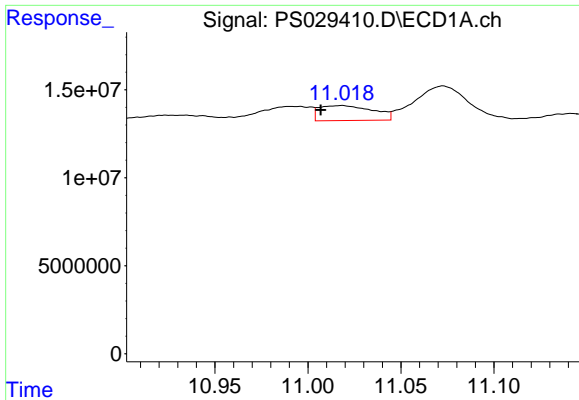
#14 DINOSEB

R.T.: 11.235 min
 Delta R.T.: 0.041 min
 Response: 2170755
 Conc: N.D.



#14 DINOSEB

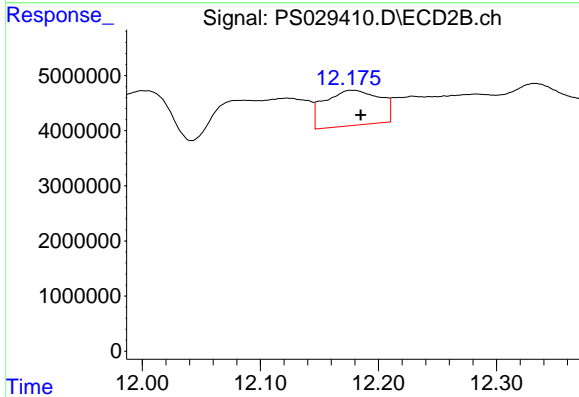
R.T.: 11.115 min
 Delta R.T.: 0.005 min
 Response: 17183617
 Conc: 2.83 ng/ml



#15 Picloram

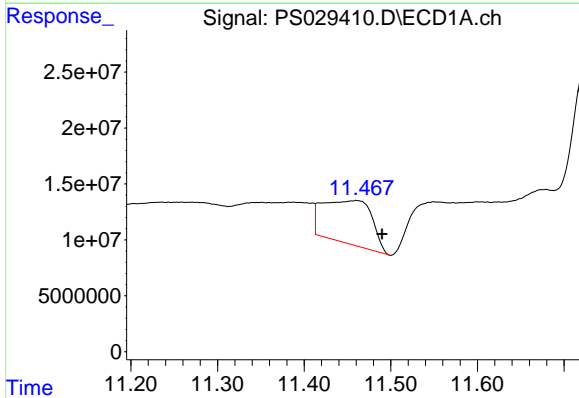
R.T.: 11.018 min
 Delta R.T.: 0.011 min
 Response: 17111906
 Conc: N.D.

Instrument :
 ECD_S
 ClientSampleId :
 ENV-104-SB02



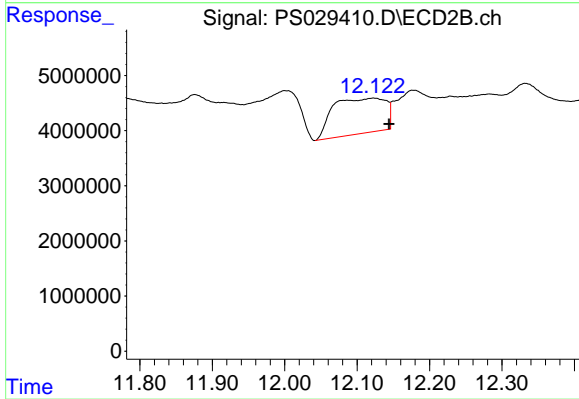
#15 Picloram

R.T.: 12.178 min
 Delta R.T.: -0.007 min
 Response: 20791322
 Conc: 1.80 ng/ml



#16 DCPA

R.T.: 11.460 min
 Delta R.T.: -0.030 min
 Response: 152419758
 Conc: 5.08 ng/ml



#16 DCPA

R.T.: 12.123 min
 Delta R.T.: -0.022 min
 Response: 32405416
 Conc: 2.74 ng/ml