

Data Path : Z:\pestpcbsrv\HPCHEM1\ECD_S\Data\PS031522\
 Data File : PS018611.D
 Signal(s) : Signal #1: ECD1A.ch Signal #2: ECD2B.ch
 Acq On : 15 Mar 2022 20:00
 Operator : AJ\MA
 Sample : HSTDCCC750
 Misc :
 ALS Vial : 3 Sample Multiplier: 1

Instrument :
 ECD_S
 ClientSampleId :

Integration File signal 1: autoint1.e
 Integration File signal 2: autoint2.e
 Quant Time: Mar 15 21:46:05 2022
 Quant Method : Z:\pestpcbsrv\HPCHEM1\ECD_S\Method\PS031422.M
 Quant Title : 8080.M
 QLast Update : Mon Mar 14 11:41:05 2022
 Response via : Initial Calibration
 Integrator: ChemStation

Volume Inj. : 2 µl
 Signal #1 Phase : Rtx-CLPesticides Signal #2 Phase: Rtx-CLPesticides2
 Signal #1 Info : 30M x 0.32mm x0.5 Signal #2 Info : 30M x 0.32mm x 0.25µm

	Compound	RT#1	RT#2	Resp#1	Resp#2	ng/ml	ng/ml

System Monitoring Compounds							
4) S	2,4-DCAA	7.232	6.811	2152.6E6	523.2E6	756.386	743.482
Target Compounds							
1) T	Dalapon	3.030	2.533	2622.6E6	540.9E6	674.462	654.508
2) T	3,5-DICHL...	6.441	5.983	2782.4E6	718.2E6	722.038	686.516
3) T	4-Nitroph...	7.059	6.421	1176.7E6	270.7E6	682.915	666.337
5) T	DICAMBA	7.425	6.979	7781.2E6	2084.6E6	713.434	699.883
6) T	MCP P	7.598	7.078	603.5E6	165.3E6	71.100	67.526
7) T	MCPA	7.748	7.291	848.4E6	239.3E6	70.149	68.534
8) T	DICHLORPROP	8.121	7.602	1945.7E6	571.1E6	706.408	721.484
9) T	2,4-D	8.349	7.892	2370.2E6	659.0E6	707.382	704.076
10) T	Pentachlo...	8.661	8.324	26088.3E6	6934.7E6	720.619	706.162
11) T	2,4,5-TP ...	9.213	8.684	10897.0E6	3124.3E6	716.520	716.245
12) T	2,4,5-T	9.497	9.061	10827.4E6	3004.3E6	724.786	725.303
13) T	2,4-DB	10.049	9.568	2096.4E6	410.1E6	766.376	722.315
14) T	DINOSEB	11.215	9.897	7845.4E6	2186.3E6	733.685	713.594
15) T	Picloram	11.028	10.874	15099.6E6	3834.6E6	734.570	721.325
16) T	DCPA	11.482	10.831	13361.6E6	3801.6E6	746.843	722.846

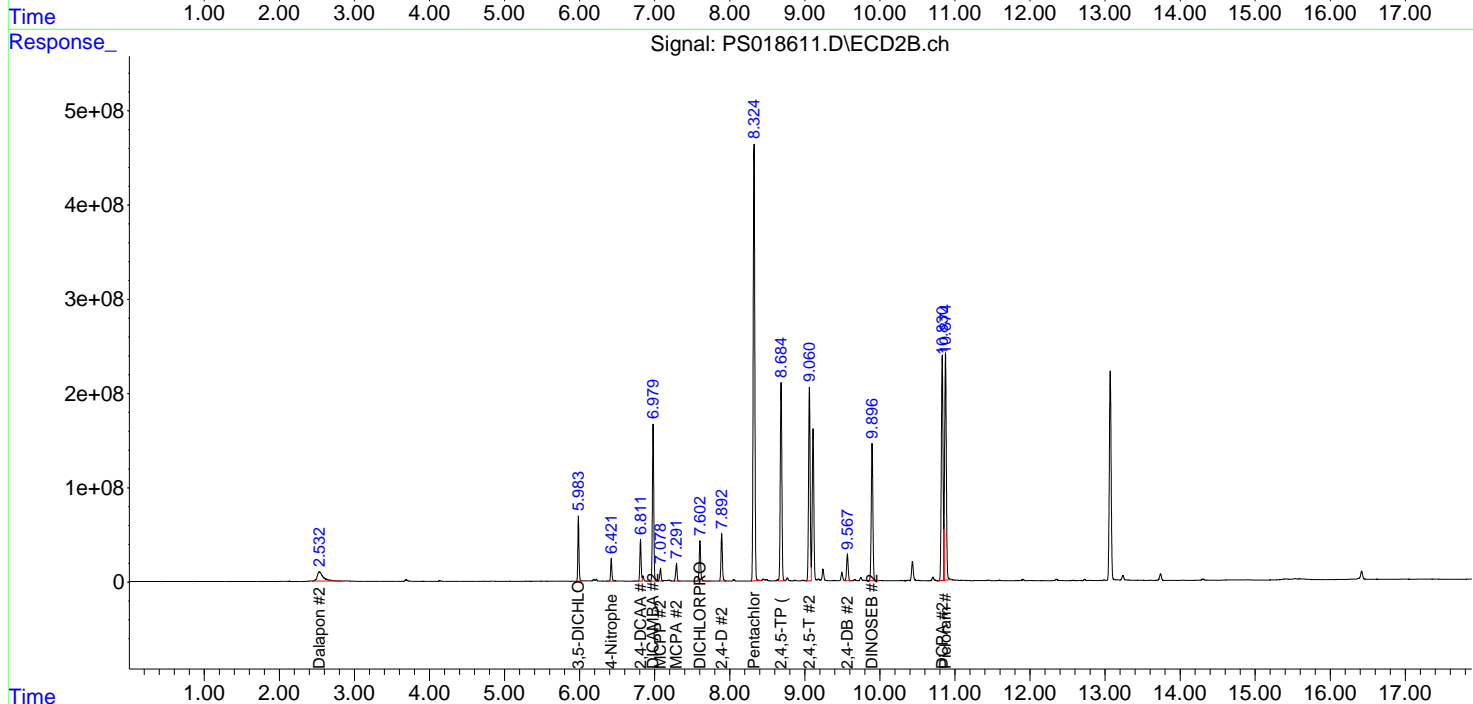
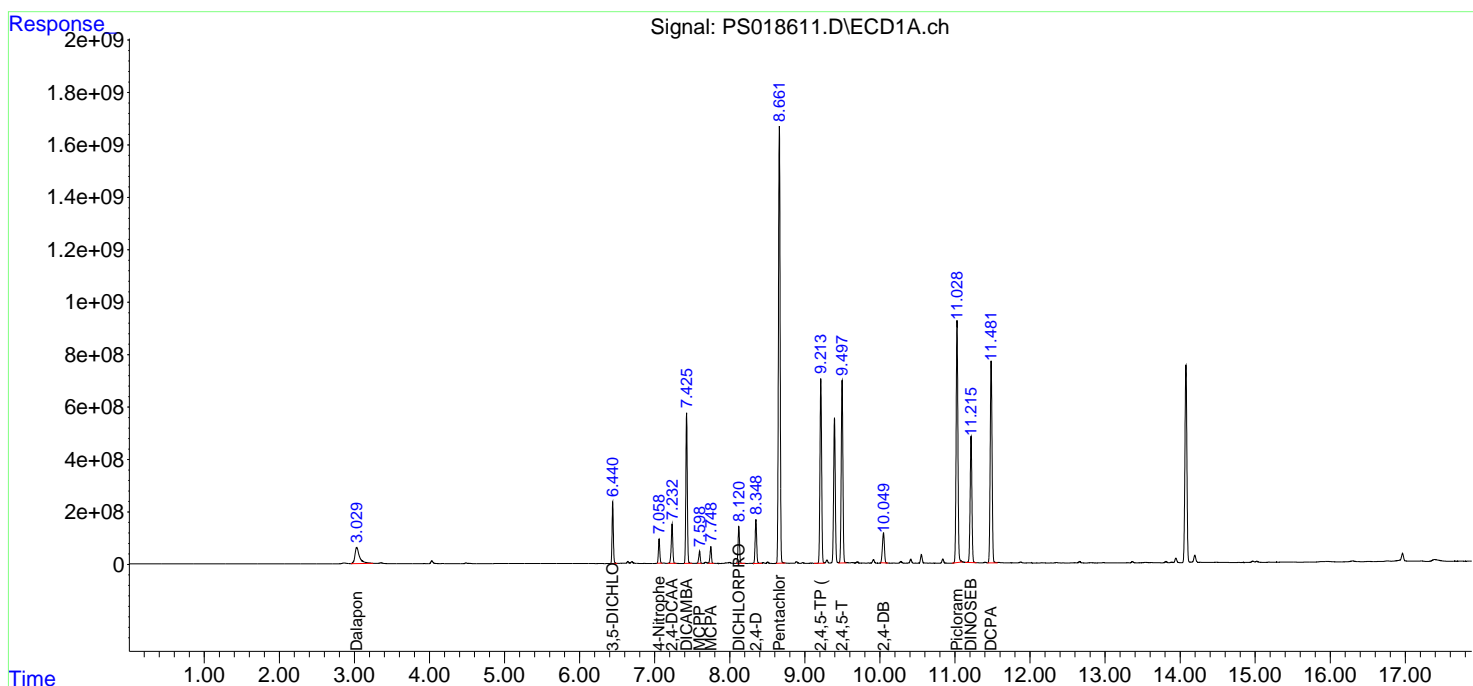
(f)=RT Delta > 1/2 Window (#)=Amounts differ by > 25% (m)=manual int.

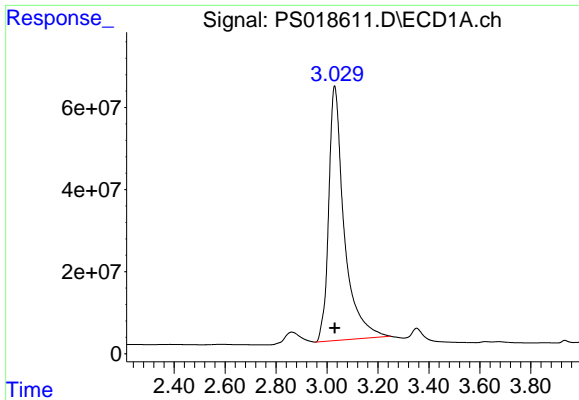
Data Path : Z:\pestpcbsrv\HPCHEM1\ECD_S\Data\PS031522\
 Data File : PS018611.D
 Signal(s) : Signal #1: ECD1A.ch Signal #2: ECD2B.ch
 Acq On : 15 Mar 2022 20:00
 Operator : AJ\MA
 Sample : HSTDCCC750
 Misc :
 ALS Vial : 3 Sample Multiplier: 1

Instrument :
 ECD_S
 ClientSampleId :

Integration File signal 1: autoint1.e
 Integration File signal 2: autoint2.e
 Quant Time: Mar 15 21:46:05 2022
 Quant Method : Z:\pestpcbsrv\HPCHEM1\ECD_S\Method\PS031422.M
 Quant Title : 8080.M
 QLast Update : Mon Mar 14 11:41:05 2022
 Response via : Initial Calibration
 Integrator: ChemStation

Volume Inj. : 2 µl
 Signal #1 Phase : Rtx-CLPesticides Signal #2 Phase: Rtx-CLPesticides2
 Signal #1 Info : 30M x 0.32mm x0.5 Signal #2 Info : 30M x 0.32mm x 0.25µm

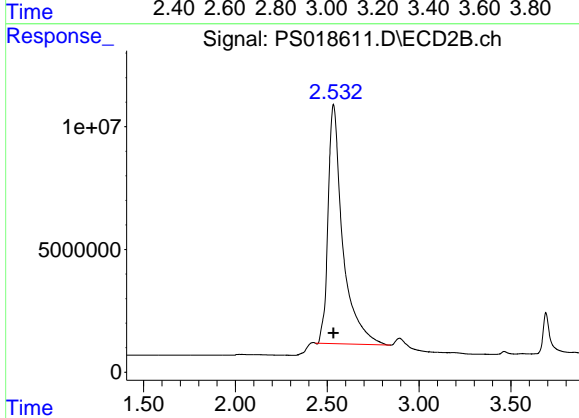




#1 Dalapon

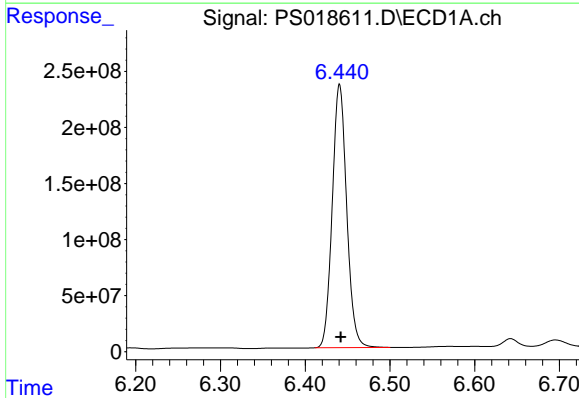
R.T.: 3.030 min
Delta R.T.: 0.000 min
Response: 2622641770
Conc: 674.46 ng/ml

Instrument :
ECD_S
ClientSampleId :



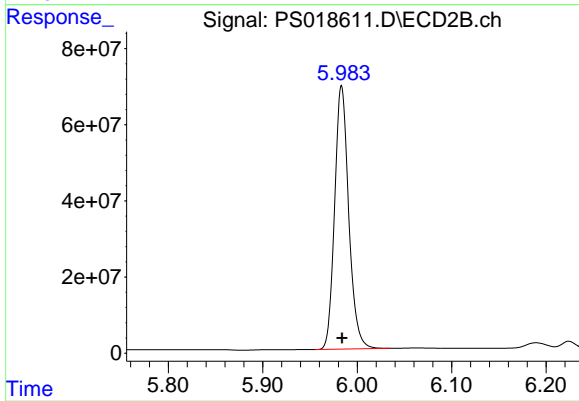
#1 Dalapon

R.T.: 2.533 min
Delta R.T.: 0.000 min
Response: 540928707
Conc: 654.51 ng/ml



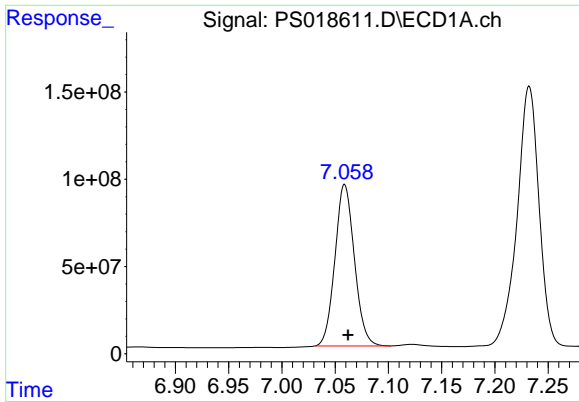
#2 3,5-DICHLOROBENZOIC ACID

R.T.: 6.441 min
Delta R.T.: -0.001 min
Response: 2782417207
Conc: 722.04 ng/ml



#2 3,5-DICHLOROBENZOIC ACID

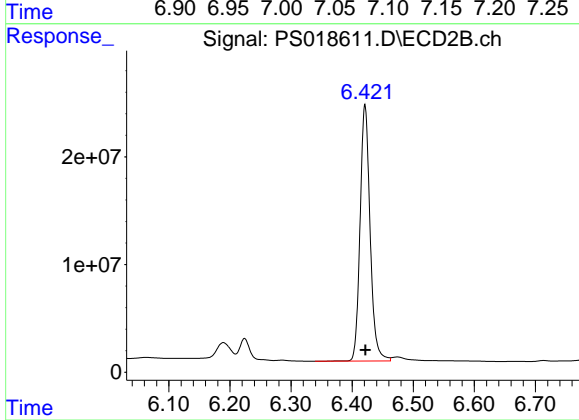
R.T.: 5.983 min
Delta R.T.: 0.000 min
Response: 718174756
Conc: 686.52 ng/ml



#3 4-Nitrophenol

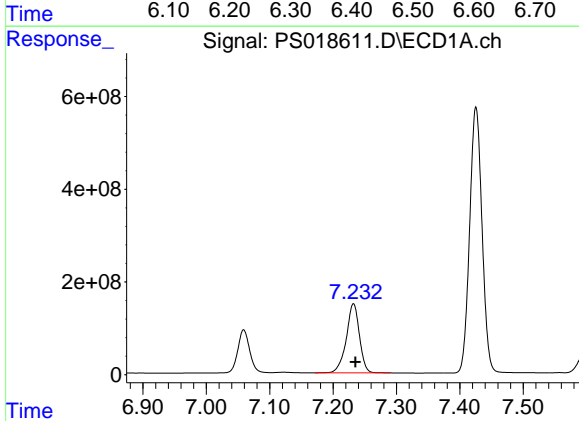
R.T.: 7.059 min
 Delta R.T.: -0.003 min
 Response: 1176740568
 Conc: 682.92 ng/ml

Instrument :
 ECD_S
 ClientSampleId :



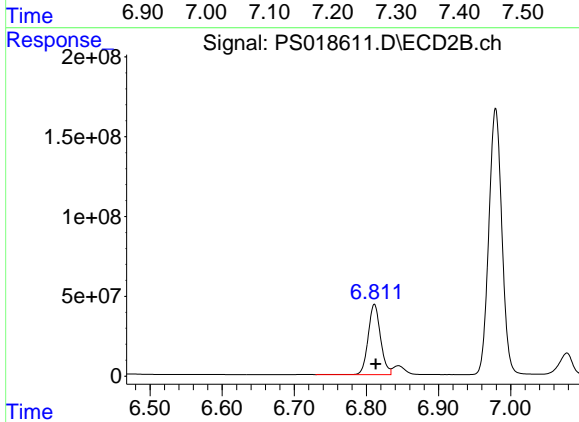
#3 4-Nitrophenol

R.T.: 6.421 min
 Delta R.T.: 0.000 min
 Response: 270715663
 Conc: 666.34 ng/ml



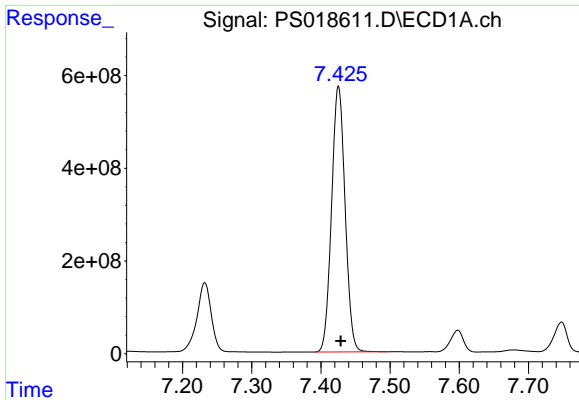
#4 2,4-DCAA

R.T.: 7.232 min
 Delta R.T.: -0.003 min
 Response: 2152612208
 Conc: 756.39 ng/ml



#4 2,4-DCAA

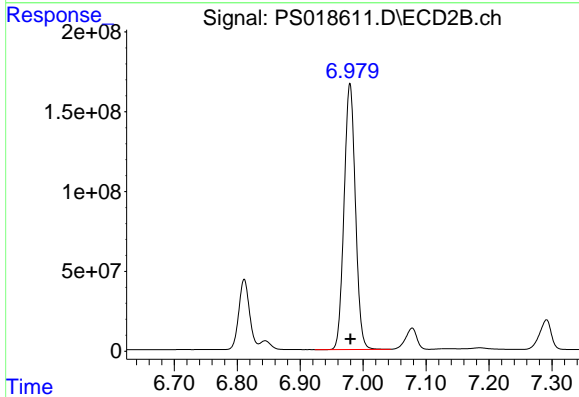
R.T.: 6.811 min
 Delta R.T.: -0.002 min
 Response: 523154653
 Conc: 743.48 ng/ml



#5 DICAMBA

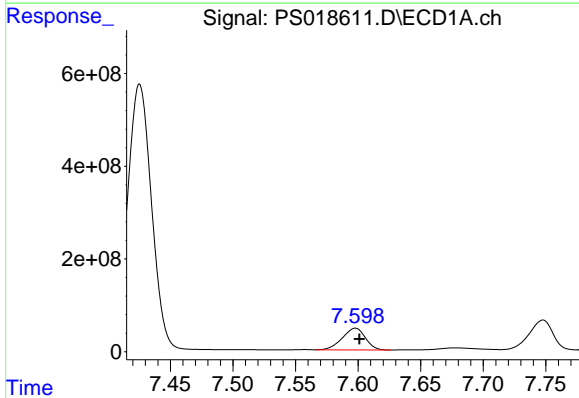
R.T.: 7.425 min
 Delta R.T.: -0.004 min
 Response: 7781226752
 Conc: 713.43 ng/ml

Instrument :
 ECD_S
 ClientSampleId :



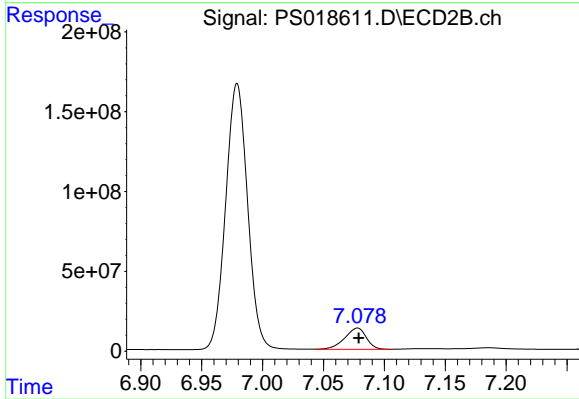
#5 DICAMBA

R.T.: 6.979 min
 Delta R.T.: 0.000 min
 Response: 2084638631
 Conc: 699.88 ng/ml



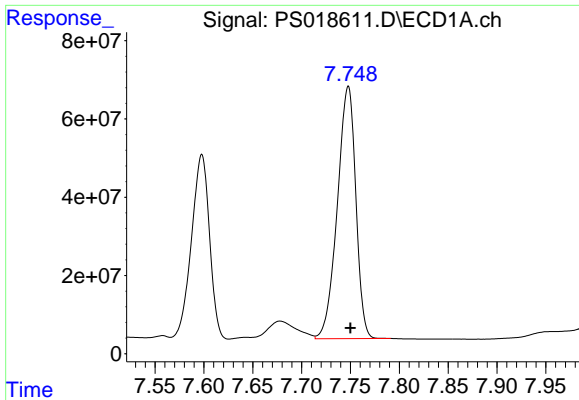
#6 MCP

R.T.: 7.598 min
 Delta R.T.: -0.003 min
 Response: 603529530
 Conc: 71.10 ug/ml



#6 MCP

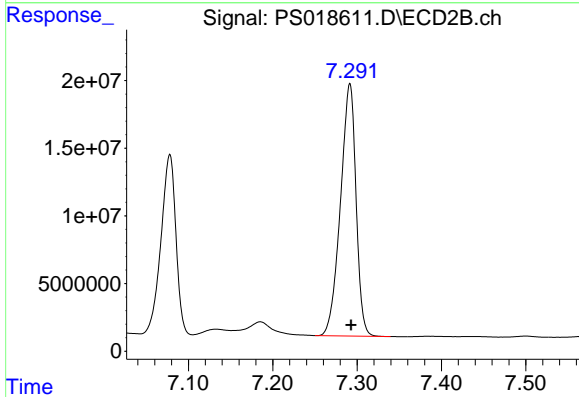
R.T.: 7.078 min
 Delta R.T.: 0.000 min
 Response: 165310052
 Conc: 67.53 ug/ml



#7 MCPA

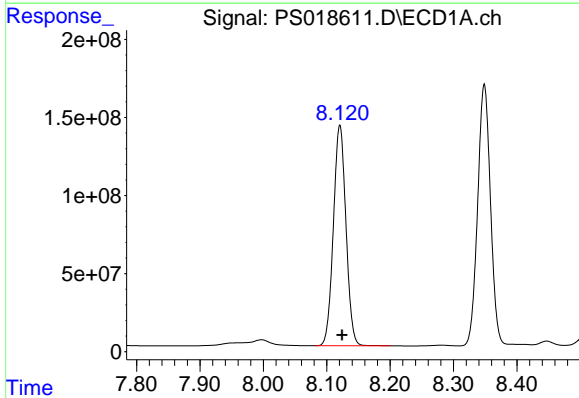
R.T.: 7.748 min
 Delta R.T.: -0.002 min
 Response: 848397445
 Conc: 70.15 ug/ml

Instrument :
 ECD_S
 ClientSampleId :



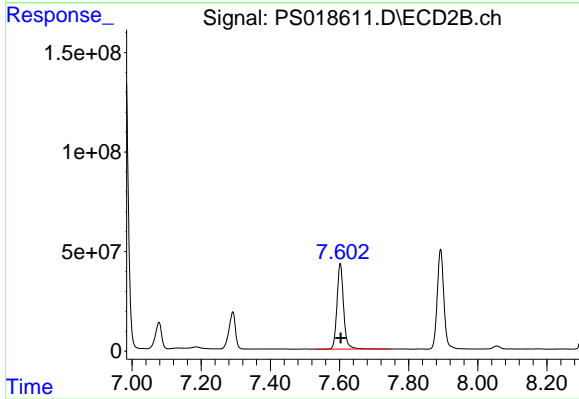
#7 MCPA

R.T.: 7.291 min
 Delta R.T.: -0.002 min
 Response: 239328877
 Conc: 68.53 ug/ml



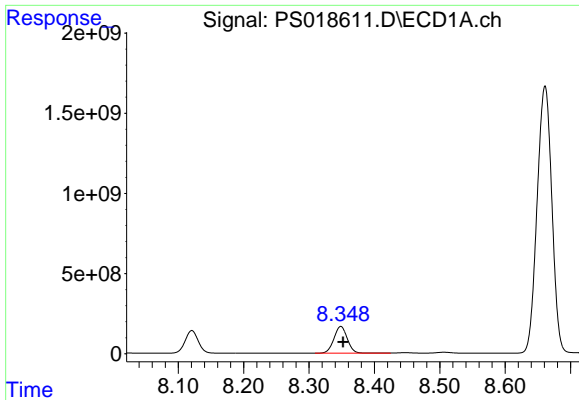
#8 DICHLORPROP

R.T.: 8.121 min
 Delta R.T.: -0.003 min
 Response: 1945724128
 Conc: 706.41 ng/ml



#8 DICHLORPROP

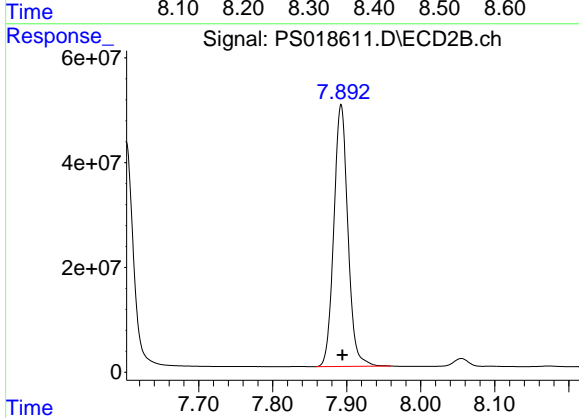
R.T.: 7.602 min
 Delta R.T.: -0.002 min
 Response: 571136019
 Conc: 721.48 ng/ml



#9 2,4-D

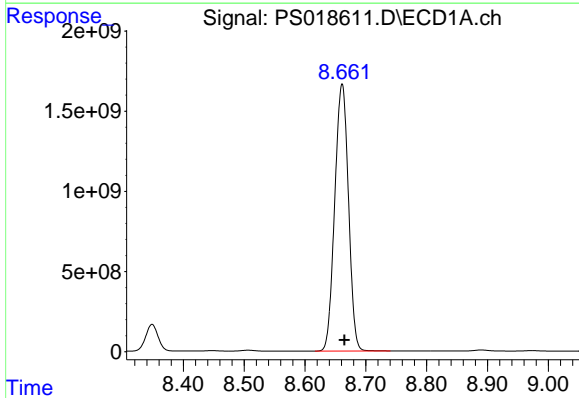
R.T.: 8.349 min
Delta R.T.: -0.003 min
Response: 2370174147
Conc: 707.38 ng/ml

Instrument :
ECD_S
ClientSampleId :



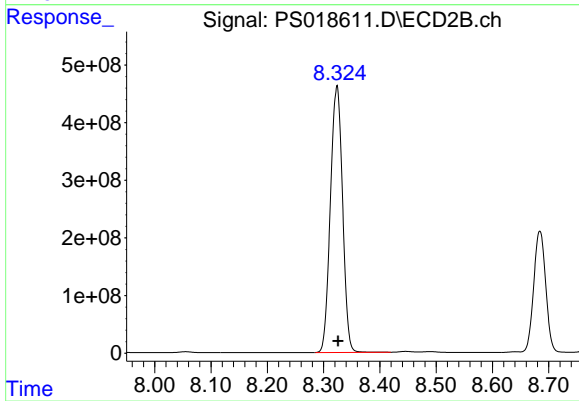
#9 2,4-D

R.T.: 7.892 min
Delta R.T.: -0.002 min
Response: 659025494
Conc: 704.08 ng/ml



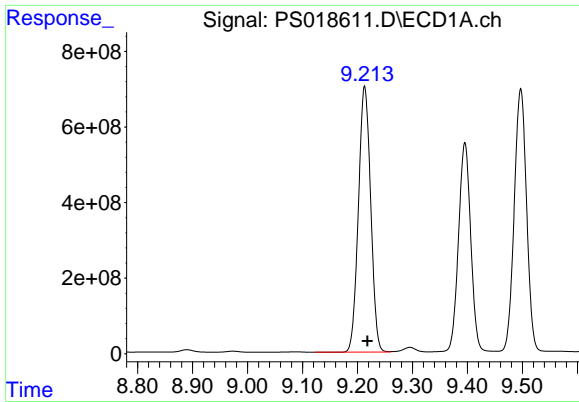
#10 Pentachlorophenol

R.T.: 8.661 min
Delta R.T.: -0.004 min
Response: 26088288798
Conc: 720.62 ng/ml



#10 Pentachlorophenol

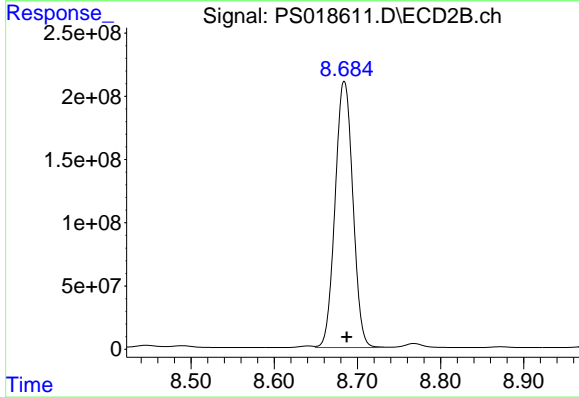
R.T.: 8.324 min
Delta R.T.: -0.002 min
Response: 6934724871
Conc: 706.16 ng/ml



#11 2,4,5-TP (SILVEX)

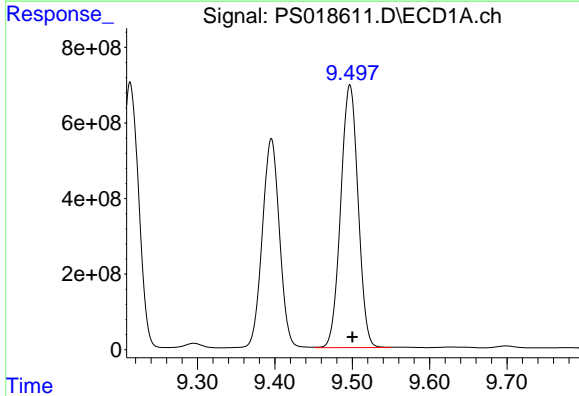
R.T.: 9.213 min
 Delta R.T.: -0.005 min
 Response: 10896977081
 Conc: 716.52 ng/ml

Instrument :
 ECD_S
 ClientSampleId :



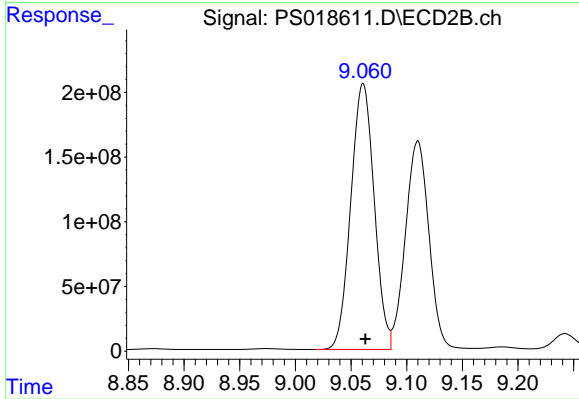
#11 2,4,5-TP (SILVEX)

R.T.: 8.684 min
 Delta R.T.: -0.003 min
 Response: 3124258094
 Conc: 716.24 ng/ml



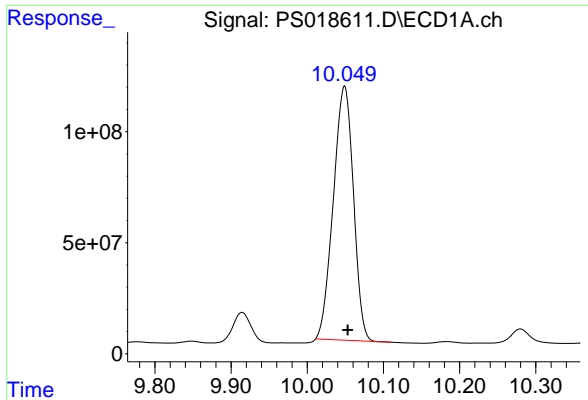
#12 2,4,5-T

R.T.: 9.497 min
 Delta R.T.: -0.003 min
 Response: 10827376824
 Conc: 724.79 ng/ml



#12 2,4,5-T

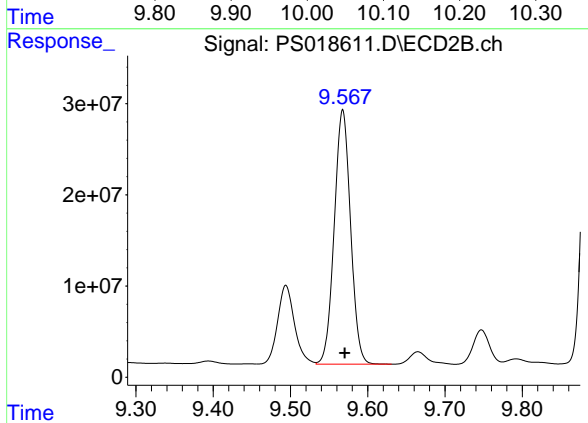
R.T.: 9.061 min
 Delta R.T.: -0.002 min
 Response: 3004341824
 Conc: 725.30 ng/ml



#13 2,4-DB

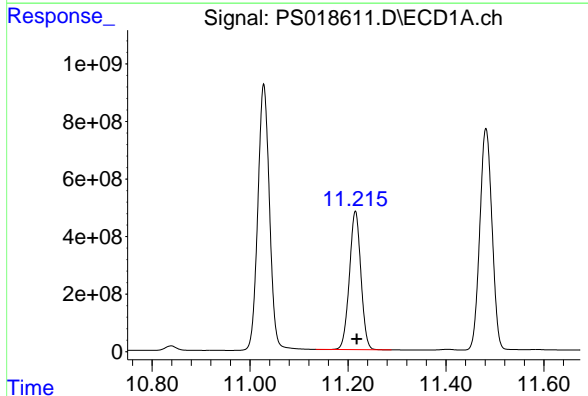
R.T.: 10.049 min
 Delta R.T.: -0.004 min
 Response: 2096353004
 Conc: 766.38 ng/ml

Instrument :
 ECD_S
 ClientSampleId :



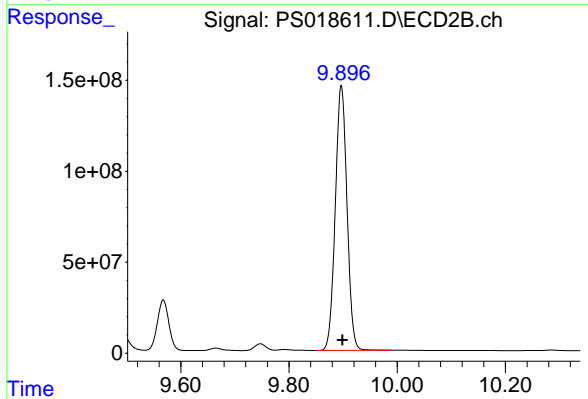
#13 2,4-DB

R.T.: 9.568 min
 Delta R.T.: -0.002 min
 Response: 410093217
 Conc: 722.32 ng/ml



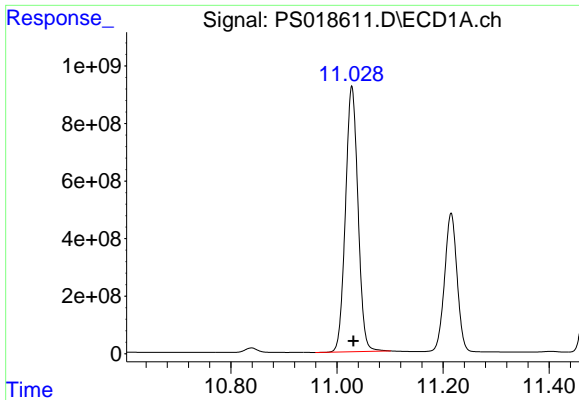
#14 DINOSEB

R.T.: 11.215 min
 Delta R.T.: -0.003 min
 Response: 7845391922
 Conc: 733.69 ng/ml



#14 DINOSEB

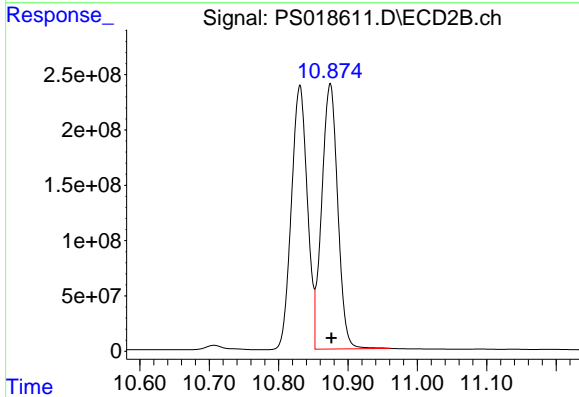
R.T.: 9.897 min
 Delta R.T.: -0.002 min
 Response: 2186338499
 Conc: 713.59 ng/ml



#15 Picloram

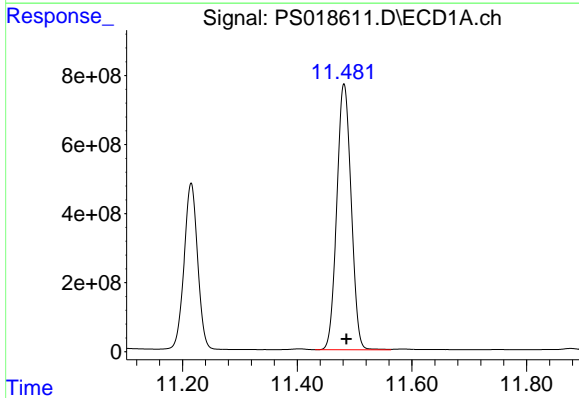
R.T.: 11.028 min
 Delta R.T.: -0.003 min
 Response: 15099634864
 Conc: 734.57 ng/ml

Instrument :
 ECD_S
 ClientSampleId :



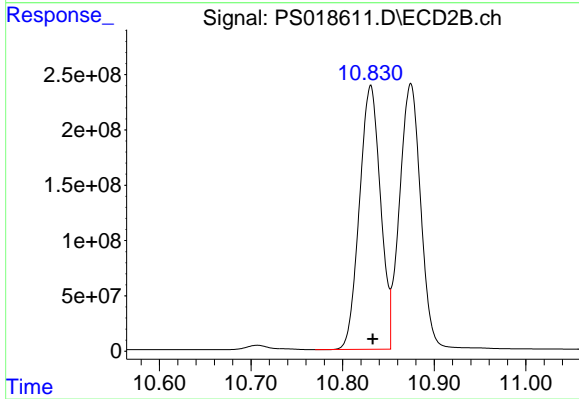
#15 Picloram

R.T.: 10.874 min
 Delta R.T.: -0.002 min
 Response: 3834637405
 Conc: 721.33 ng/ml



#16 DCPA

R.T.: 11.482 min
 Delta R.T.: -0.004 min
 Response: 13361601440
 Conc: 746.84 ng/ml



#16 DCPA

R.T.: 10.831 min
 Delta R.T.: -0.002 min
 Response: 3801648089
 Conc: 722.85 ng/ml