

Data Path : Z:\pestpcbsrv\HPCHEM1\ECD_S\Data\PS031721\
 Data File : PS014274.D
 Signal(s) : Signal #1: ECD1A.ch Signal #2: ECD2B.ch
 Acq On : 17 Mar 2021 11:46
 Operator : DD\AJ
 Sample : I.BLK
 Misc :
 ALS Vial : 9 Sample Multiplier: 1

Instrument :
 ECD_S
 ClientSampleId :

Integration File signal 1: autoint1.e
 Integration File signal 2: autoint2.e
 Quant Time: Mar 18 02:27:52 2021
 Quant Method : Z:\pestpcbsrv\HPCHEM1\ECD_S\Method\PS031721.M
 Quant Title : 8080.M
 QLast Update : Thu Mar 18 02:23:19 2021
 Response via : Initial Calibration
 Integrator: ChemStation

Volume Inj. : 2 µl
 Signal #1 Phase : Rtx-CLPesticides Signal #2 Phase: Rtx-CLPesticides2
 Signal #1 Info : 30M x 0.32mm x0.5 Signal #2 Info : 30M x 0.32mm x 0.25µm

	Compound	RT#1	RT#2	Resp#1	Resp#2	ng/ml	ng/ml

System Monitoring Compounds							
4) S	2,4-DCAA	7.170	6.891	618.3E6	248.2E6	432.709	526.004
Target Compounds							
5) T	DICAMBA	7.358	7.059	8491280	6395306	1.579	3.192 #
6) T	MCPD	0.000	7.107	0	1592840	N.D.	<MDL
7) T	MCPA	7.632	7.361	8971686	3171673	1.559	1.302
8) T	DICHLORPROP	0.000	7.694	0	90478	N.D.	<MDL
9) T	2,4-D	8.344f	8.012	19865210	1345555	13.477	2.254 #
10) T	Pentachlo...	8.582	8.406	13280811	6003280	<MDL	<MDL #
11) T	2,4,5-TP ...	9.130	8.771	10077832	6299879	1.308	2.316 #
12) T	2,4,5-T	9.427	9.163	26985639	6751447	3.468	2.532 #
13) T	2,4-DB	0.000	9.673	0	1442821	N.D.	4.069
14) T	DINOSEB	11.111	9.981	12615399	2754366	2.207	1.524 #
15) T	Picloram	10.954	10.980	192.1E6	83781202	18.394	22.084
16) T	DCPA	11.376	10.906	19054657	8991668	1.618	2.192 #

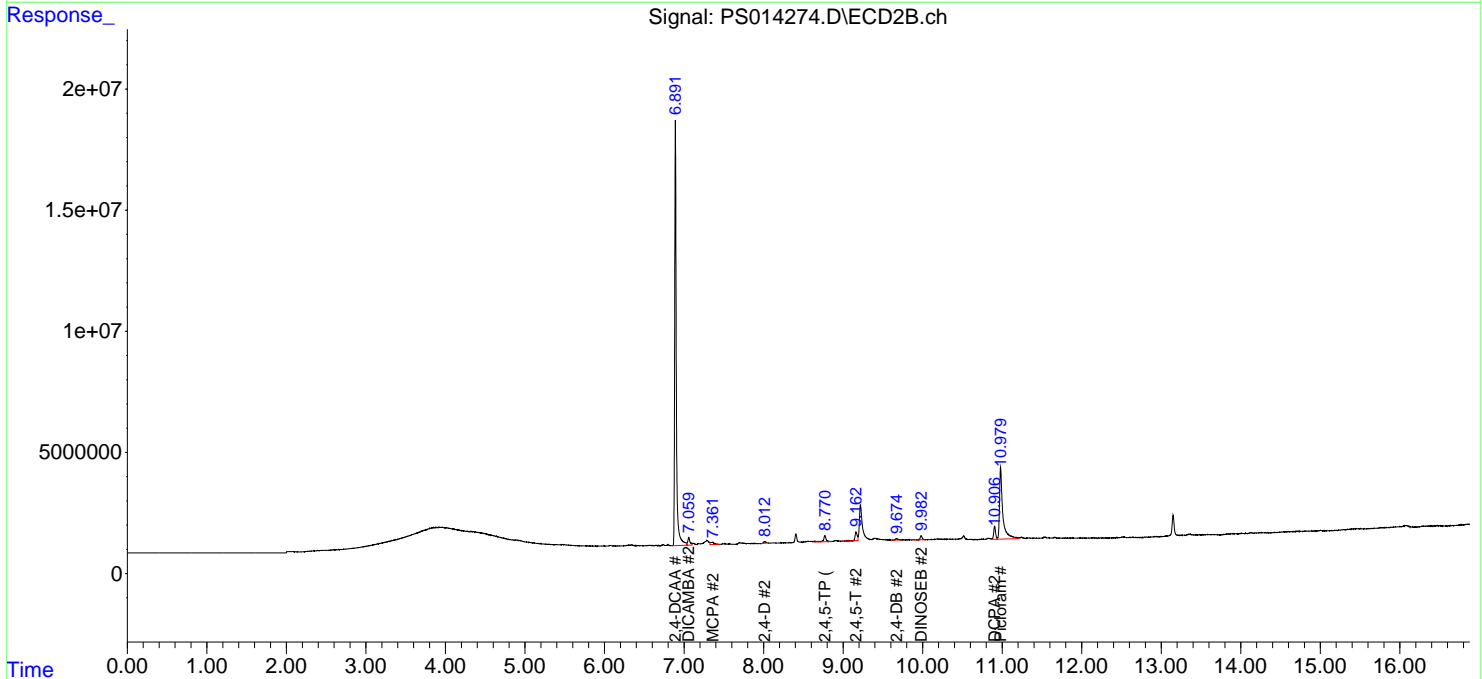
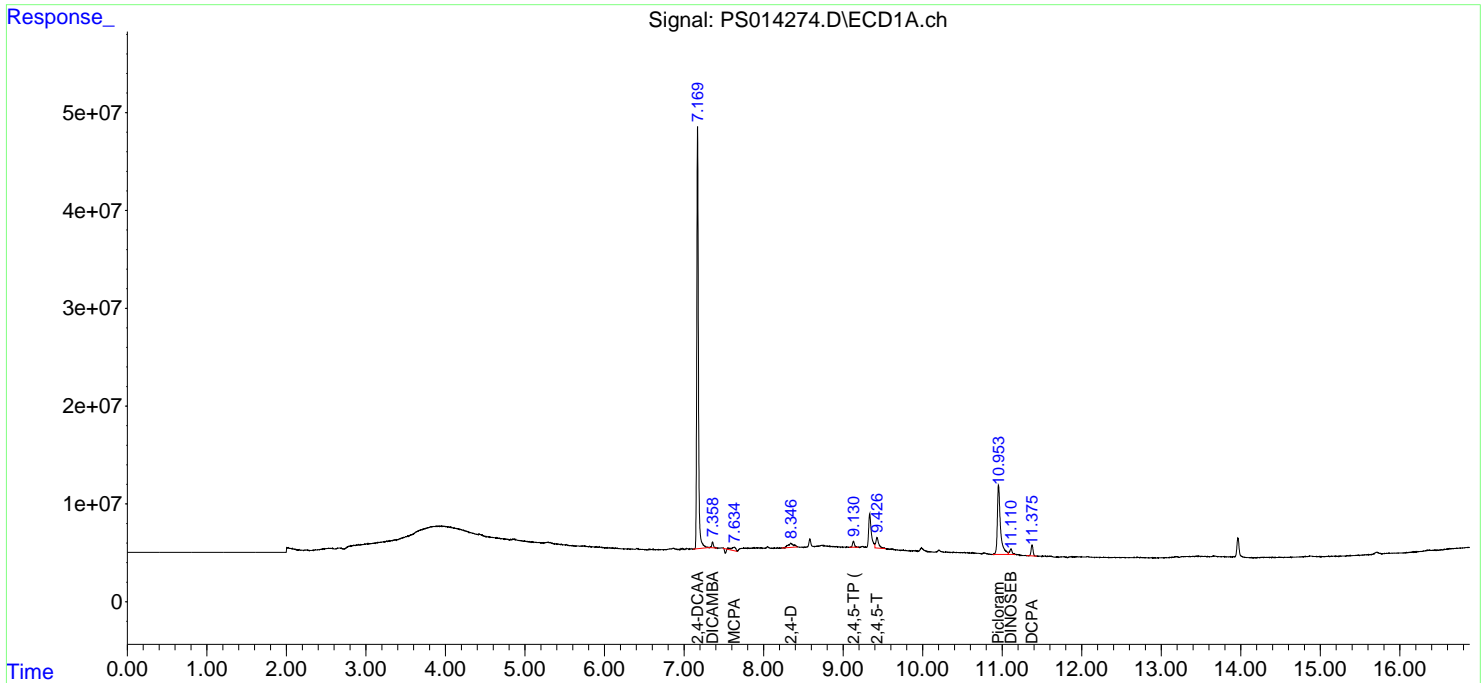
(f)=RT Delta > 1/2 Window (#)=Amounts differ by > 25% (m)=manual int.

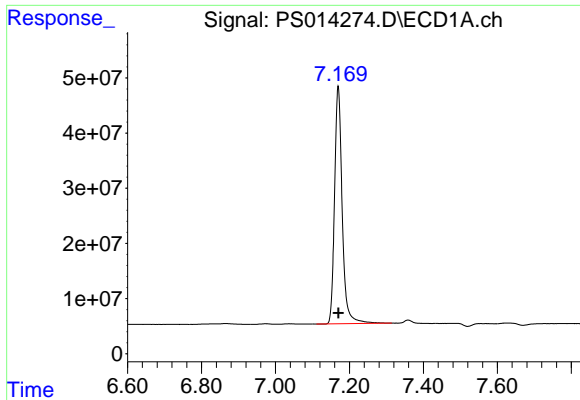
Data Path : Z:\pestpcbsrv\HPCHEM1\ECD_S\Data\PS031721\
 Data File : PS014274.D
 Signal(s) : Signal #1: ECD1A.ch Signal #2: ECD2B.ch
 Acq On : 17 Mar 2021 11:46
 Operator : DD\AJ
 Sample : I.BLK
 Misc :
 ALS Vial : 9 Sample Multiplier: 1

Instrument :
 ECD_S
 ClientSampled :

Integration File signal 1: autoint1.e
 Integration File signal 2: autoint2.e
 Quant Time: Mar 18 02:27:52 2021
 Quant Method : Z:\pestpcbsrv\HPCHEM1\ECD_S\Method\PS031721.M
 Quant Title : 8080.M
 QLast Update : Thu Mar 18 02:23:19 2021
 Response via : Initial Calibration
 Integrator: ChemStation

Volume Inj. : 2 µl
 Signal #1 Phase : Rtx-CLPesticides Signal #2 Phase: Rtx-CLPesticides2
 Signal #1 Info : 30M x 0.32mm x0.5 Signal #2 Info : 30M x 0.32mm x 0.25µm

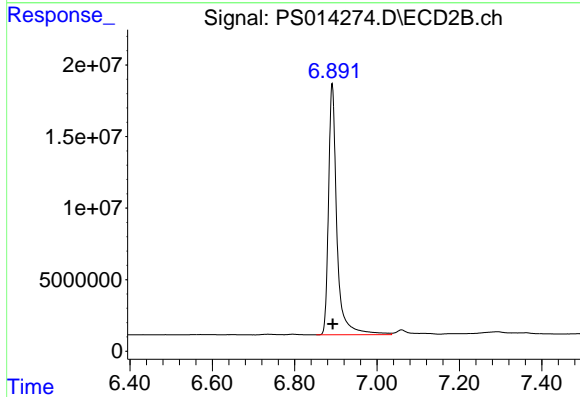




#4 2,4-DCAA

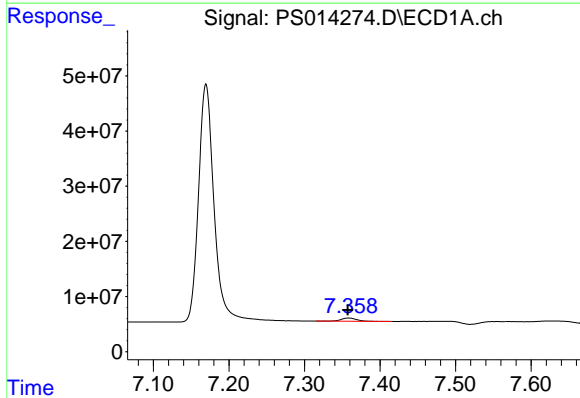
R.T.: 7.170 min
 Delta R.T.: 0.000 min
 Response: 618273370
 Conc: 432.71 ng/ml

Instrument :
 ECD_S
 ClientSampled :



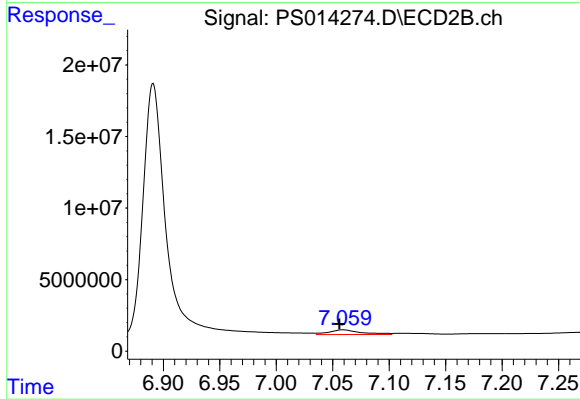
#4 2,4-DCAA

R.T.: 6.891 min
 Delta R.T.: 0.000 min
 Response: 248152089
 Conc: 526.00 ng/ml



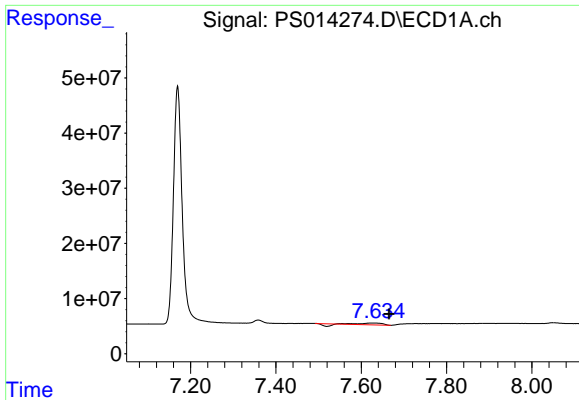
#5 DICAMBA

R.T.: 7.358 min
 Delta R.T.: 0.001 min
 Response: 8491280
 Conc: 1.58 ng/ml



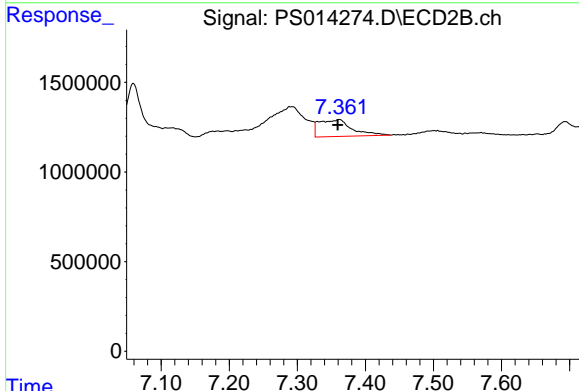
#5 DICAMBA

R.T.: 7.059 min
 Delta R.T.: 0.003 min
 Response: 6395306
 Conc: 3.19 ng/ml

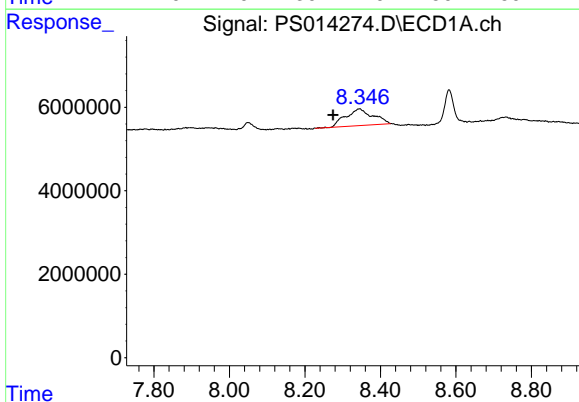


#7 MCPA
 R.T.: 7.632 min
 Delta R.T.: -0.033 min
 Response: 8971686
 Conc: 1.56 ug/ml

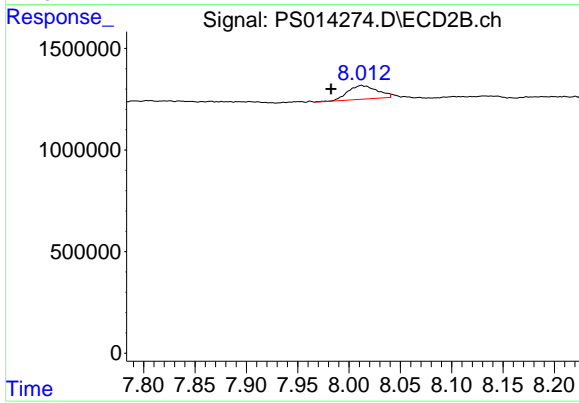
Instrument :
 ECD_S
 ClientSampleId :



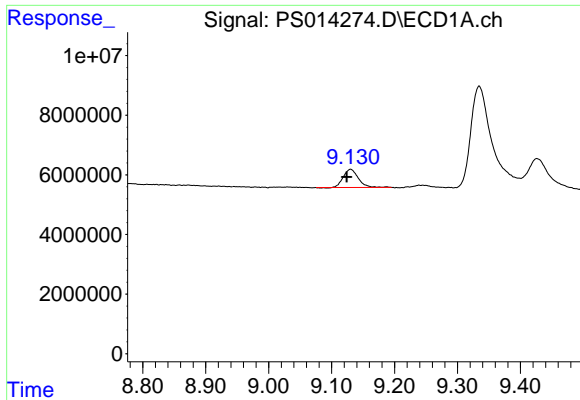
#7 MCPA
 R.T.: 7.361 min
 Delta R.T.: 0.002 min
 Response: 3171673
 Conc: 1.30 ug/ml



#9 2,4-D
 R.T.: 8.344 min
 Delta R.T.: 0.069 min
 Response: 19865210
 Conc: 13.48 ng/ml

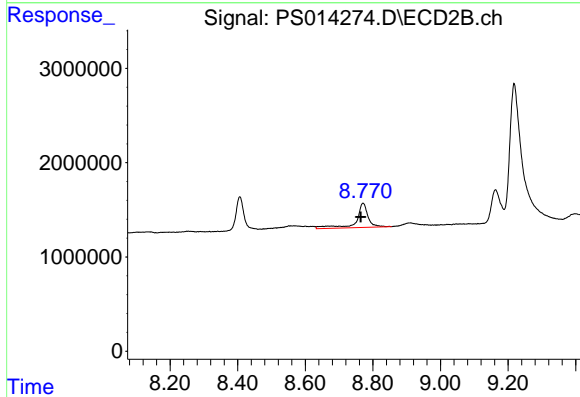


#9 2,4-D
 R.T.: 8.012 min
 Delta R.T.: 0.030 min
 Response: 1345555
 Conc: 2.25 ng/ml

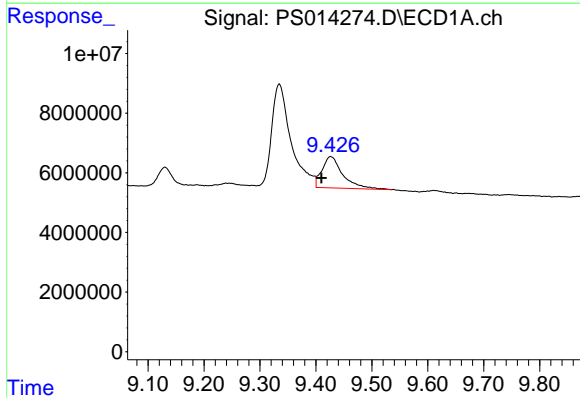


#11 2,4,5-TP (SILVEX)
 R.T.: 9.130 min
 Delta R.T.: 0.006 min
 Response: 10077832
 Conc: 1.31 ng/ml

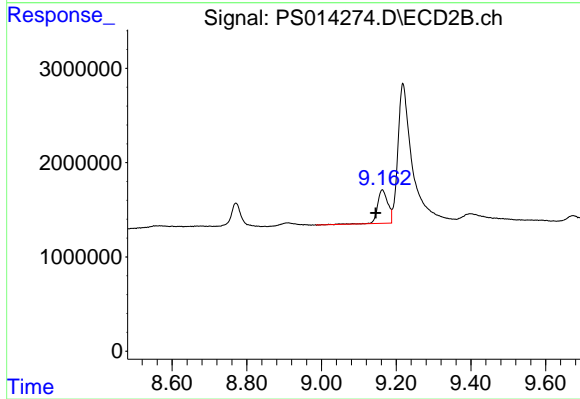
Instrument :
 ECD_S
 ClientSampleId :



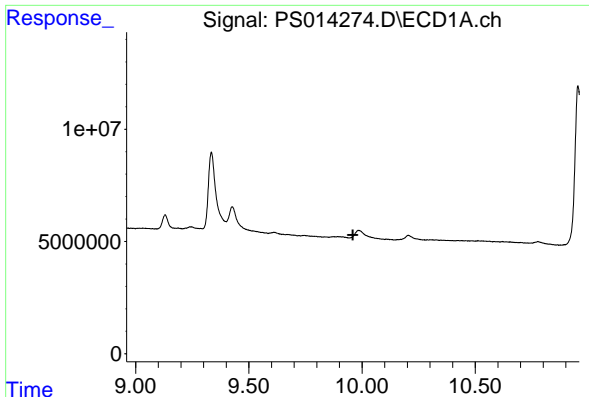
#11 2,4,5-TP (SILVEX)
 R.T.: 8.771 min
 Delta R.T.: 0.007 min
 Response: 6299879
 Conc: 2.32 ng/ml



#12 2,4,5-T
 R.T.: 9.427 min
 Delta R.T.: 0.016 min
 Response: 26985639
 Conc: 3.47 ng/ml



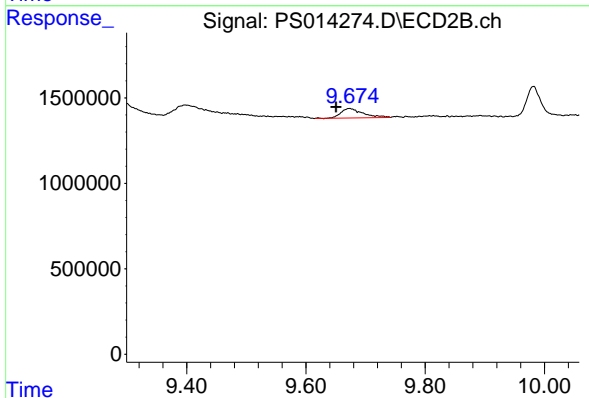
#12 2,4,5-T
 R.T.: 9.163 min
 Delta R.T.: 0.018 min
 Response: 6751447
 Conc: 2.53 ng/ml



#13 2,4-DB

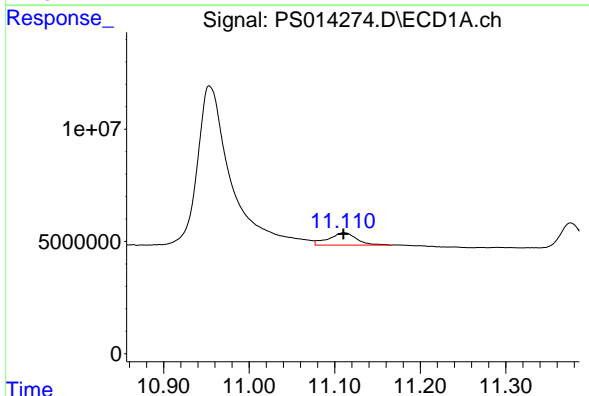
R.T.: 0.000 min
Exp R.T.: 9.960 min
Response: 0
Conc: N.D.

Instrument :
ECD_S
ClientSampleId :



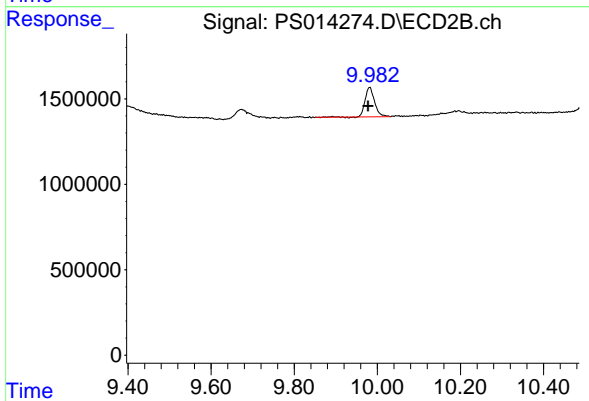
#13 2,4-DB

R.T.: 9.673 min
Delta R.T.: 0.023 min
Response: 1442821
Conc: 4.07 ng/ml



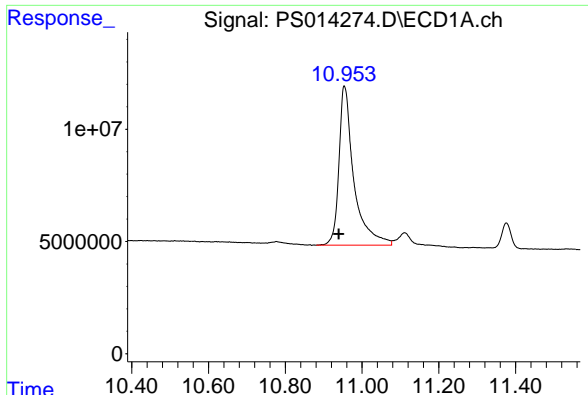
#14 DINOSEB

R.T.: 11.111 min
Delta R.T.: 0.000 min
Response: 12615399
Conc: 2.21 ng/ml



#14 DINOSEB

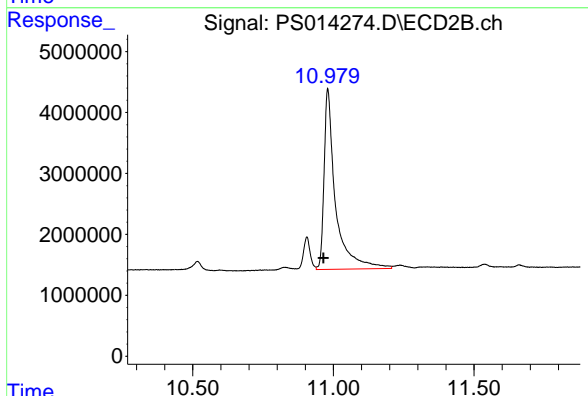
R.T.: 9.981 min
Delta R.T.: 0.003 min
Response: 2754366
Conc: 1.52 ng/ml



#15 Picloram

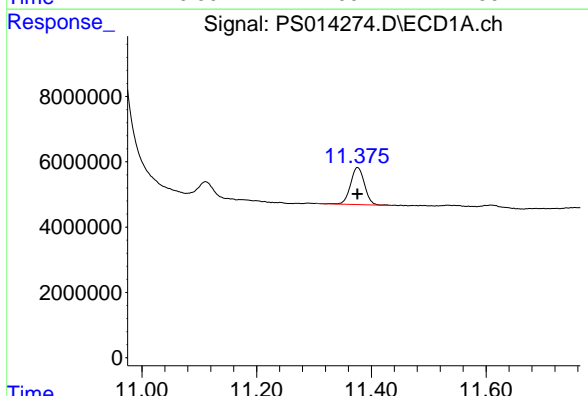
R.T.: 10.954 min
 Delta R.T.: 0.015 min
 Response: 192074911
 Conc: 18.39 ng/ml

Instrument :
 ECD_S
 ClientSampled :



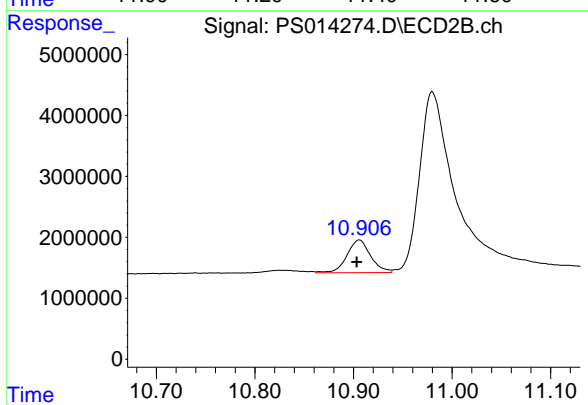
#15 Picloram

R.T.: 10.980 min
 Delta R.T.: 0.015 min
 Response: 83781202
 Conc: 22.08 ng/ml



#16 DCPA

R.T.: 11.376 min
 Delta R.T.: 0.000 min
 Response: 19054657
 Conc: 1.62 ng/ml



#16 DCPA

R.T.: 10.906 min
 Delta R.T.: 0.003 min
 Response: 8991668
 Conc: 2.19 ng/ml