

Data Path : Z:\pestpcbsrv\HPCHEM1\ECD_S\Data\PS031723\
 Data File : PS022407.D
 Signal(s) : Signal #1: ECD1A.ch Signal #2: ECD2B.ch
 Acq On : 17 Mar 2023 16:44
 Operator : AR\AJ
 Sample : PB151486BL
 Misc :
 ALS Vial : 4 Sample Multiplier: 1

Instrument :
 ECD_S
 ClientSampleId :

Integration File signal 1: autoint1.e
 Integration File signal 2: autoint2.e
 Quant Time: Mar 17 22:18:44 2023
 Quant Method : Z:\pestpcbsrv\HPCHEM1\ECD_S\Method\PS022023.M
 Quant Title : 8080.M
 QLast Update : Mon Feb 20 13:26:02 2023
 Response via : Initial Calibration
 Integrator: ChemStation

Volume Inj. : 2 µl
 Signal #1 Phase : Rtx-CLPesticides Signal #2 Phase: Rtx-CLPesticides2
 Signal #1 Info : 30M x 0.32mm x0.5 Signal #2 Info : 30M x 0.32mm x 0.25µm

Compound	RT#1	RT#2	Resp#1	Resp#2	ng/ml	ng/ml

System Monitoring Compounds						
4) S 2,4-DCAA	6.301	6.720	1238.1E6	1194.1E6	499.497	568.911
Target Compounds						
1) T Dalapon	2.364f	2.481	149.3E6	717.6E6	47.092	222.834 #
2) T 3,5-DICHL...	5.672	5.947	371.8E6	-506138	100.025	N.D. #
3) T 4-Nitroph...	6.176	6.353	141.2E6	4242289	110.949	3.176 #
5) T DICAMBA	6.467	6.878	27264600	70027177	2.628	7.246 #
6) T MCPP	6.597	7.012	51196399	16858765	6.710	2.208 #
7) T MCPA	6.717	7.180	3133543	133.5E6	<MDL	13.094 #
8) T DICHLORPROP	7.077f	7.467	-7472262	19087184	N.D.	7.764
9) T 2,4-D	7.203	7.776	16977801	228.5E6	5.178	78.896 #
10) T Pentachlo...	7.472	8.274f	835.1E6	1152.4E6	23.196	35.567 #
11) T 2,4,5-TP ...	7.989	8.598	6032.2E6	623.6E6	391.130	46.362 #
12) T 2,4,5-T	8.229	8.966	446.5E6	724.2E6	25.736	60.214 #
14) T DINOSEB	9.724f	9.773	41762.8E6	74606009	3038.845	7.820 #
15) T Picloram	9.686f	10.761	29918.3E6	2635.8E6	1214.512	134.437 #
16) T DCPA	10.063	10.687	332.0E6	929.7E6	15.587	59.426 #

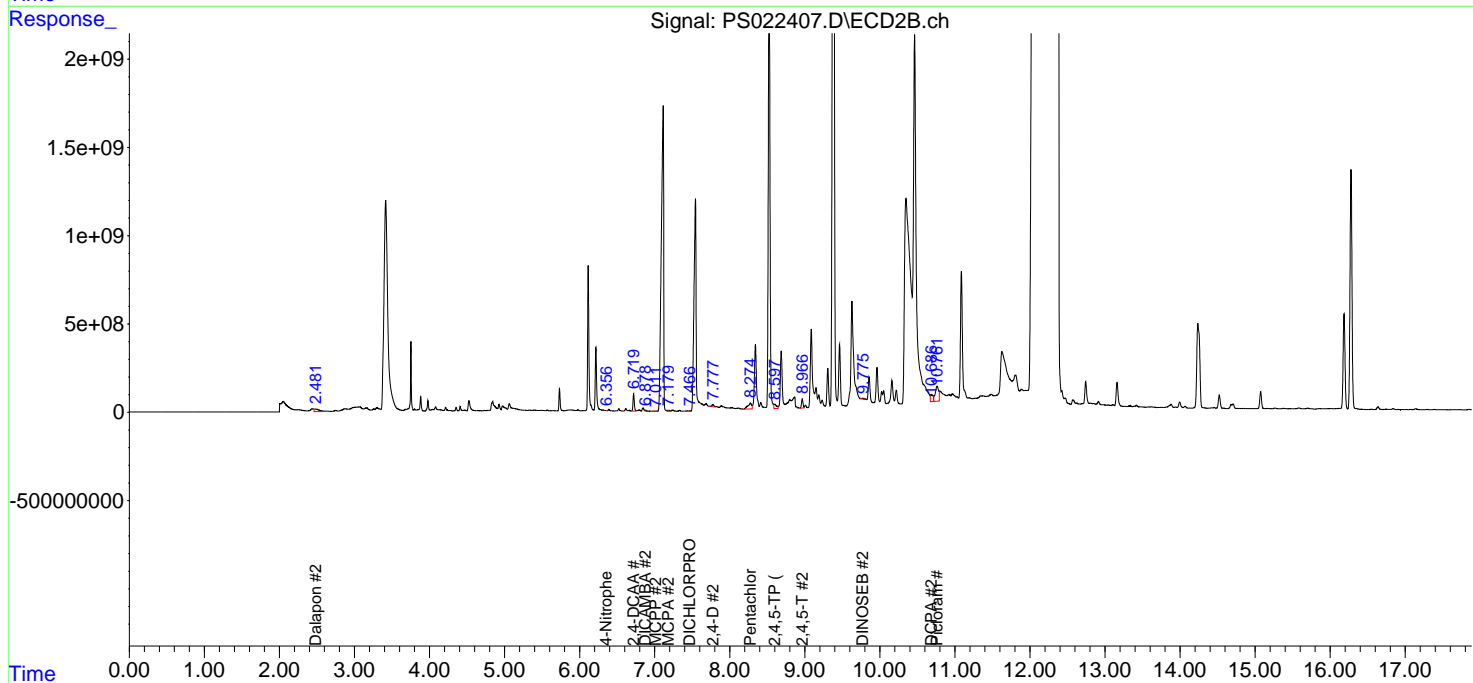
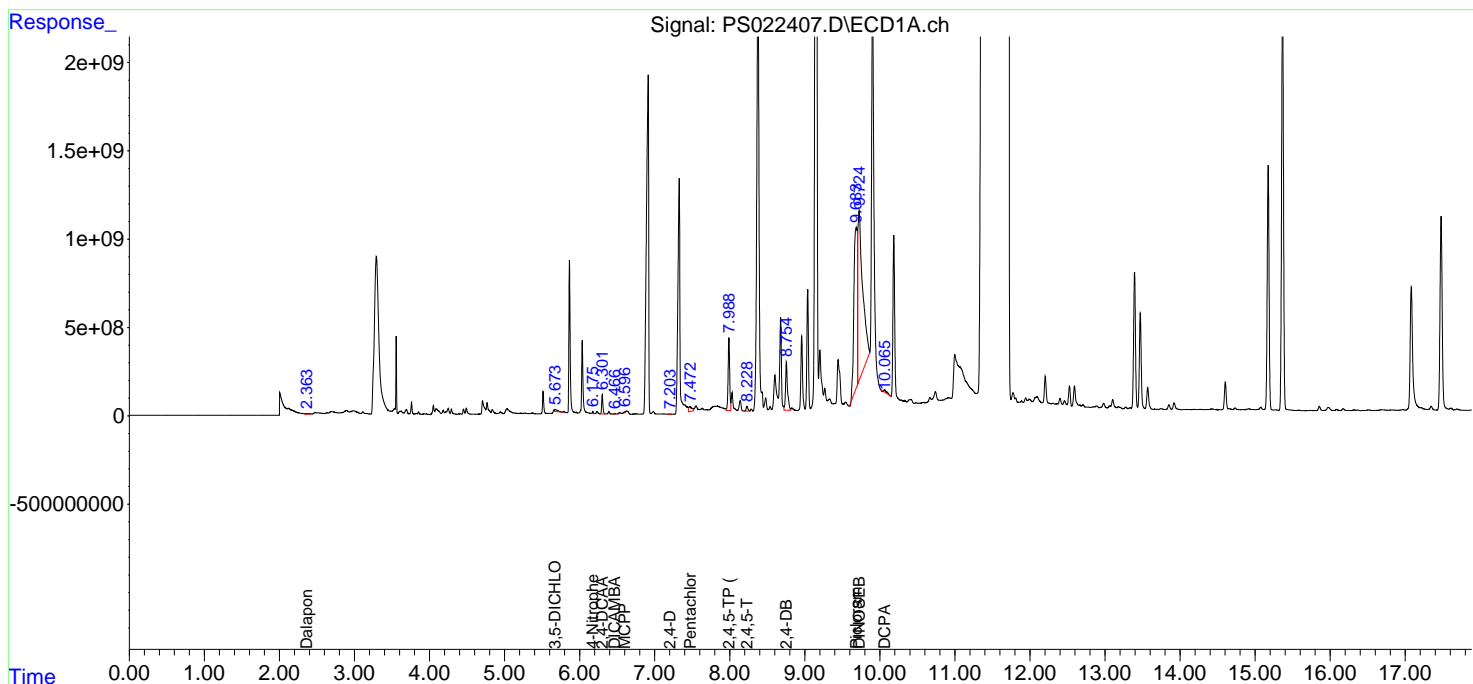
(f)=RT Delta > 1/2 Window (#)=Amounts differ by > 25% (m)=manual int.

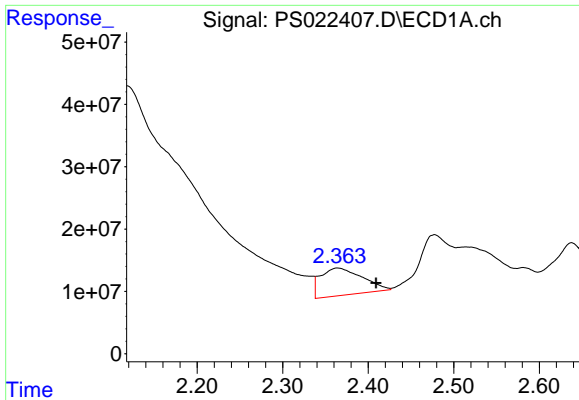
Data Path : Z:\pestpcbsrv\HPCHEM1\ECD_S\Data\PS031723\
 Data File : PS022407.D
 Signal(s) : Signal #1: ECD1A.ch Signal #2: ECD2B.ch
 Acq On : 17 Mar 2023 16:44
 Operator : AR\AJ
 Sample : PB151486BL
 Misc :
 ALS Vial : 4 Sample Multiplier: 1

Instrument :
 ECD_S
 ClientSampleId :

Integration File signal 1: autoint1.e
 Integration File signal 2: autoint2.e
 Quant Time: Mar 17 22:18:44 2023
 Quant Method : Z:\pestpcbsrv\HPCHEM1\ECD_S\Method\PS022023.M
 Quant Title : 8080.M
 QLast Update : Mon Feb 20 13:26:02 2023
 Response via : Initial Calibration
 Integrator: ChemStation

Volume Inj. : 2 µl
 Signal #1 Phase : Rtx-CLPesticides Signal #2 Phase: Rtx-CLPesticides2
 Signal #1 Info : 30M x 0.32mm x0.5 Signal #2 Info : 30M x 0.32mm x 0.25µm

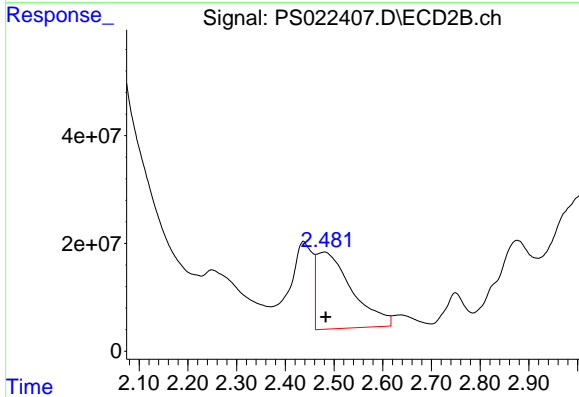




#1 Dalapon

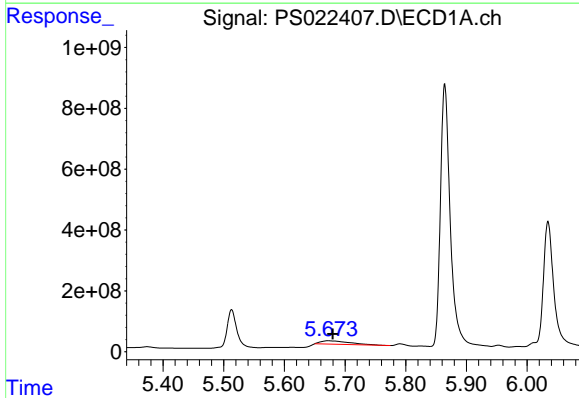
R.T.: 2.364 min
 Delta R.T.: -0.045 min
 Response: 149294338
 Conc: 47.09 ng/ml

Instrument :
 ECD_S
 ClientSampleId :



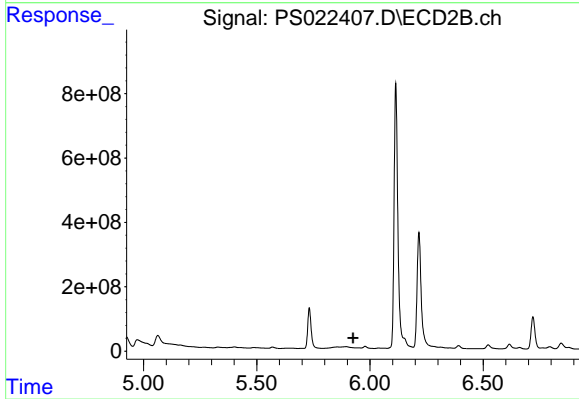
#1 Dalapon

R.T.: 2.481 min
 Delta R.T.: -0.002 min
 Response: 717560218
 Conc: 222.83 ng/ml



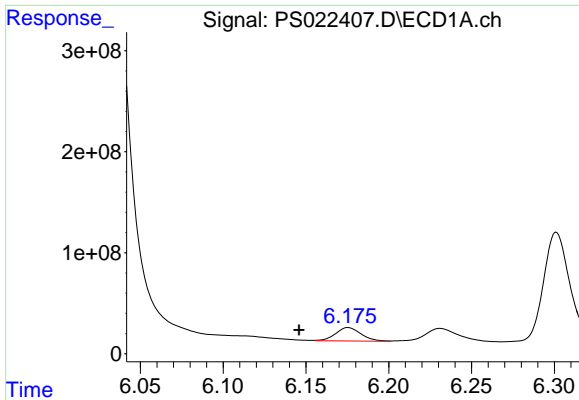
#2 3,5-DICHLOROBENZOIC ACID

R.T.: 5.672 min
 Delta R.T.: -0.008 min
 Response: 371833267
 Conc: 100.03 ng/ml



#2 3,5-DICHLOROBENZOIC ACID

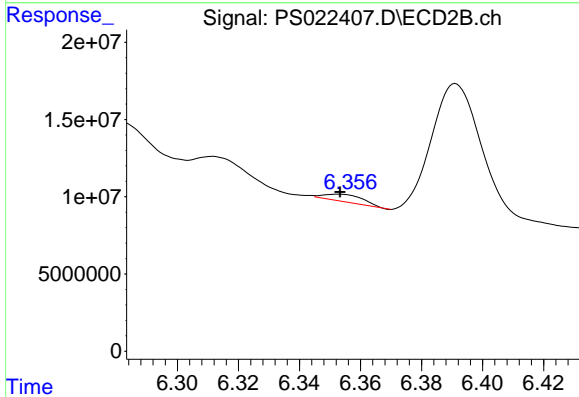
R.T.: 5.947 min
 Delta R.T.: 0.022 min
 Response: -506138
 Conc: N.D.



#3 4-Nitrophenol

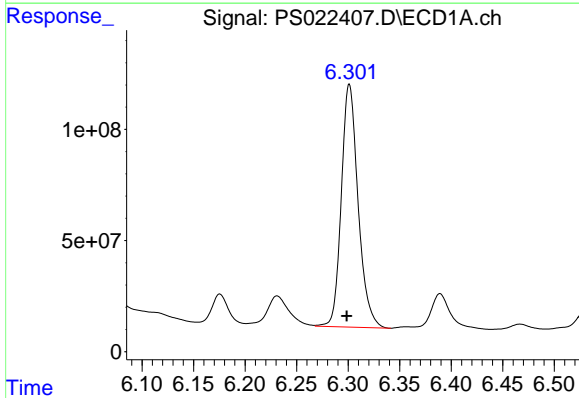
R.T.: 6.176 min
 Delta R.T.: 0.030 min
 Response: 141185294
 Conc: 110.95 ng/ml

Instrument :
 ECD_S
 ClientSampleId :



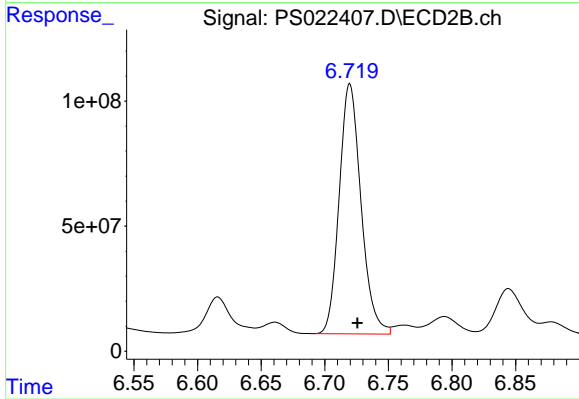
#3 4-Nitrophenol

R.T.: 6.353 min
 Delta R.T.: 0.000 min
 Response: 4242289
 Conc: 3.18 ng/ml



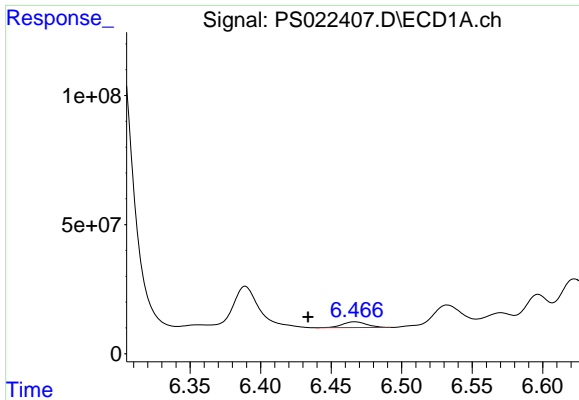
#4 2,4-DCAA

R.T.: 6.301 min
 Delta R.T.: 0.003 min
 Response: 1238097441
 Conc: 499.50 ng/ml



#4 2,4-DCAA

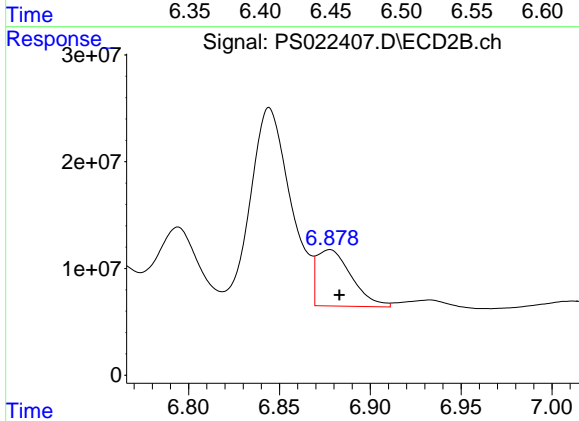
R.T.: 6.720 min
 Delta R.T.: -0.006 min
 Response: 1194123229
 Conc: 568.91 ng/ml



#5 DICAMBA

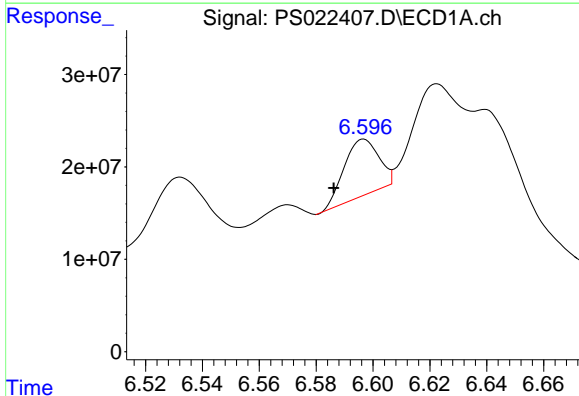
R.T.: 6.467 min
 Delta R.T.: 0.033 min
 Response: 27264600
 Conc: 2.63 ng/ml

Instrument :
 ECD_S
 ClientSampleId :



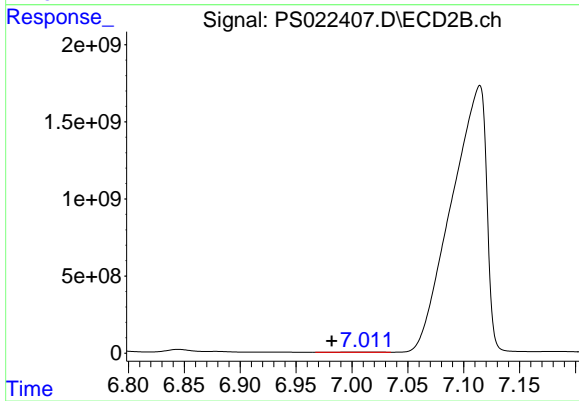
#5 DICAMBA

R.T.: 6.878 min
 Delta R.T.: -0.005 min
 Response: 70027177
 Conc: 7.25 ng/ml



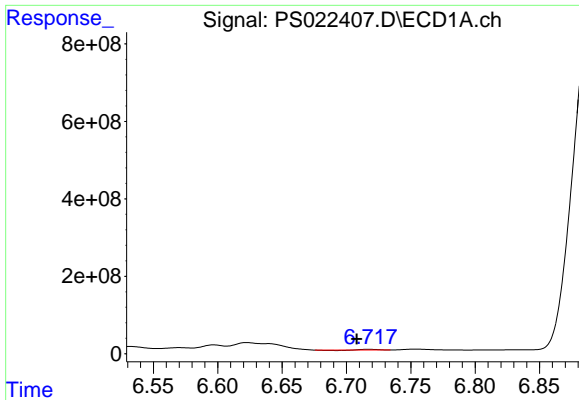
#6 MCP

R.T.: 6.597 min
 Delta R.T.: 0.011 min
 Response: 51196399
 Conc: 6.71 ug/ml



#6 MCP

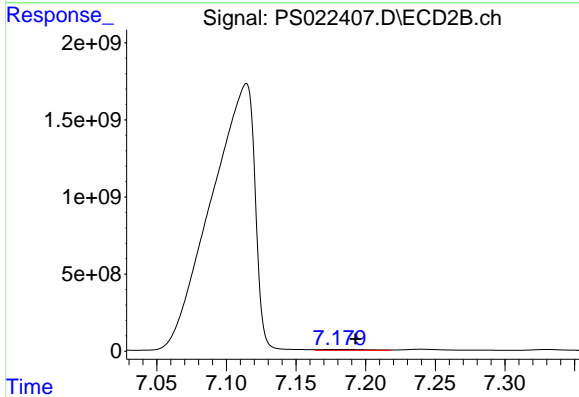
R.T.: 7.012 min
 Delta R.T.: 0.030 min
 Response: 16858765
 Conc: 2.21 ug/ml



#7 MCPA

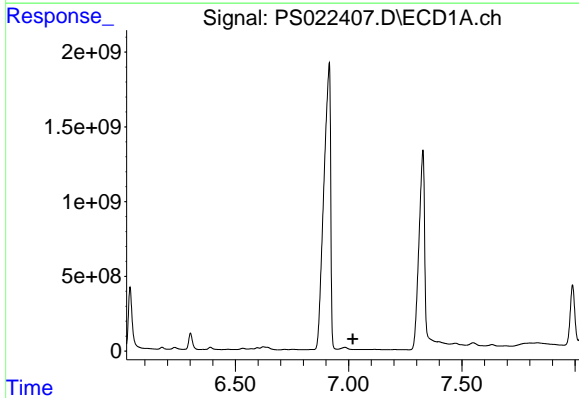
R.T.: 6.717 min
 Delta R.T.: 0.009 min
 Response: 3133543
 Conc: N.D.

Instrument :
 ECD_S
 ClientSampleId :



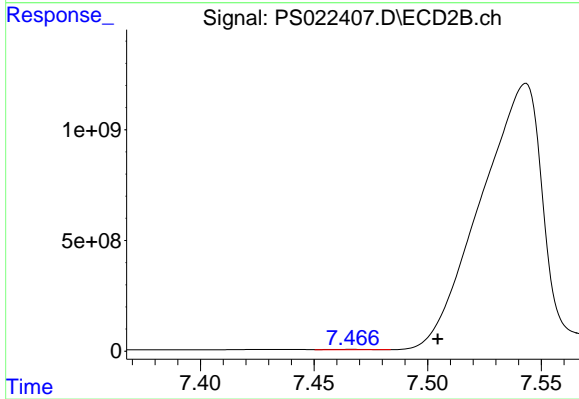
#7 MCPA

R.T.: 7.180 min
 Delta R.T.: -0.013 min
 Response: 133458539
 Conc: 13.09 ug/ml



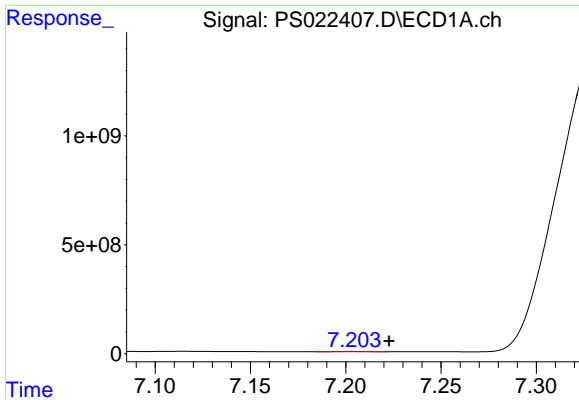
#8 DICHLORPROP

R.T.: 7.077 min
 Delta R.T.: 0.058 min
 Response: -7472262
 Conc: N.D.



#8 DICHLORPROP

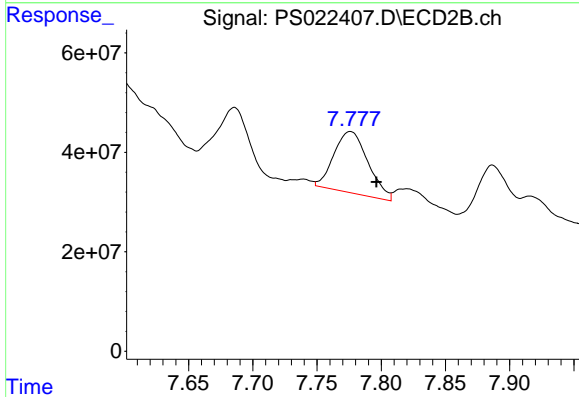
R.T.: 7.467 min
 Delta R.T.: -0.038 min
 Response: 19087184
 Conc: 7.76 ng/ml



#9 2,4-D

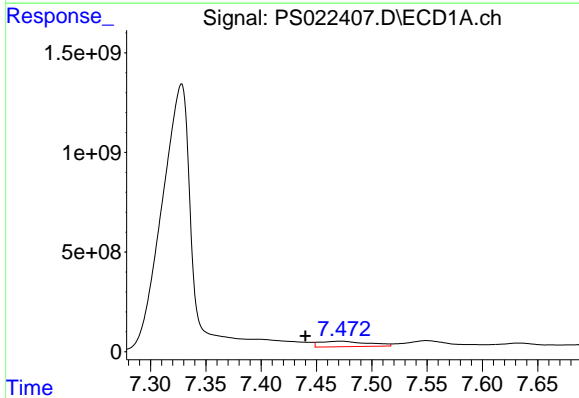
R.T.: 7.203 min
 Delta R.T.: -0.020 min
 Response: 16977801
 Conc: 5.18 ng/ml

Instrument :
 ECD_S
 ClientSampleId :



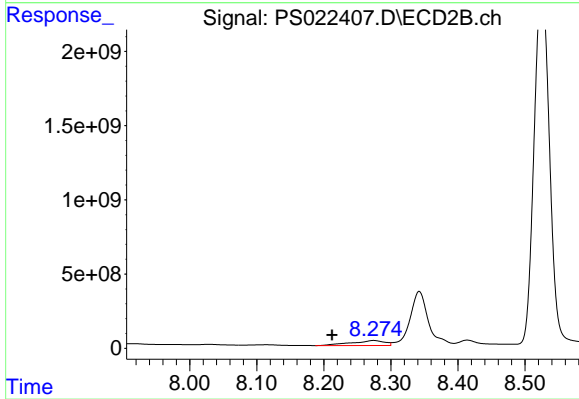
#9 2,4-D

R.T.: 7.776 min
 Delta R.T.: -0.020 min
 Response: 228459191
 Conc: 78.90 ng/ml



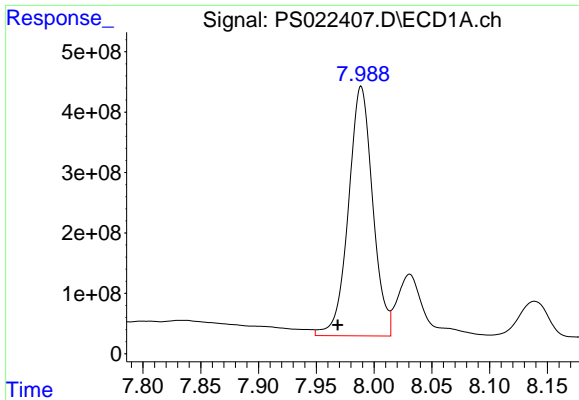
#10 Pentachlorophenol

R.T.: 7.472 min
 Delta R.T.: 0.032 min
 Response: 835129077
 Conc: 23.20 ng/ml



#10 Pentachlorophenol

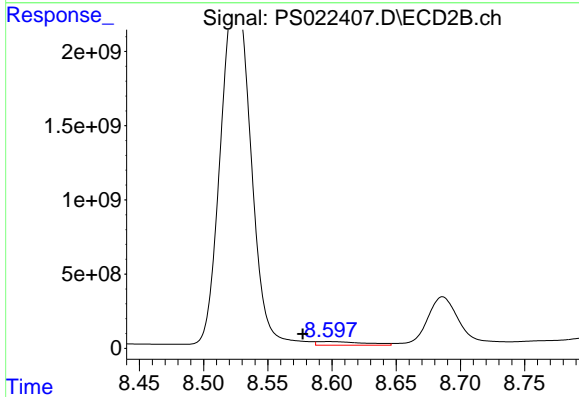
R.T.: 8.274 min
 Delta R.T.: 0.062 min
 Response: 1152432747
 Conc: 35.57 ng/ml



#11 2,4,5-TP (SILVEX)

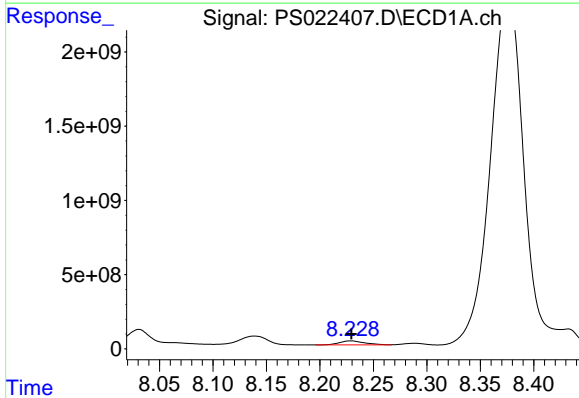
R.T.: 7.989 min
 Delta R.T.: 0.020 min
 Response: 6032182538
 Conc: 391.13 ng/ml

Instrument :
 ECD_S
 ClientSampleId :



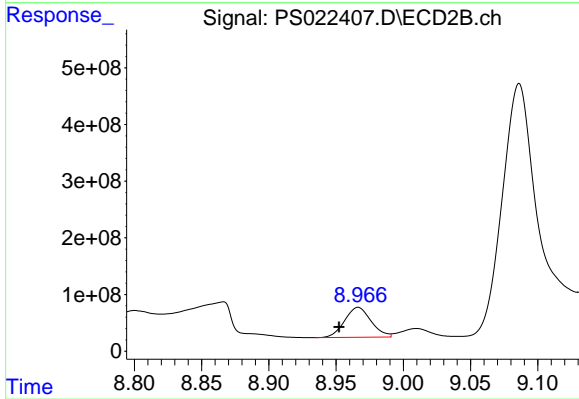
#11 2,4,5-TP (SILVEX)

R.T.: 8.598 min
 Delta R.T.: 0.020 min
 Response: 623613003
 Conc: 46.36 ng/ml



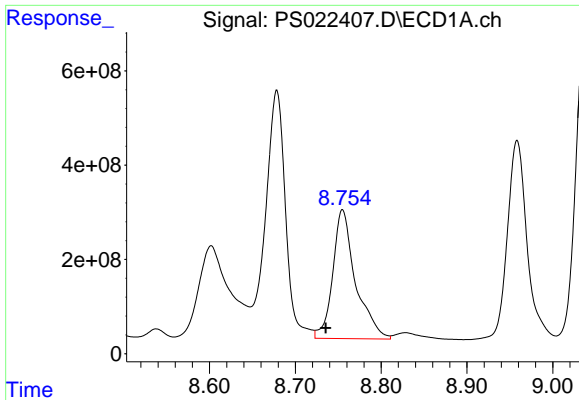
#12 2,4,5-T

R.T.: 8.229 min
 Delta R.T.: 0.000 min
 Response: 446501703
 Conc: 25.74 ng/ml



#12 2,4,5-T

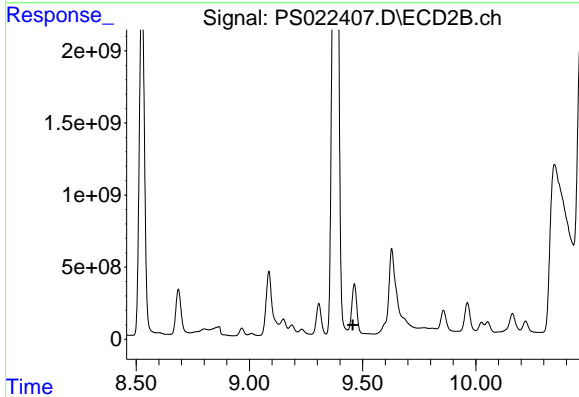
R.T.: 8.966 min
 Delta R.T.: 0.014 min
 Response: 724196105
 Conc: 60.21 ng/ml



#13 2,4-DB

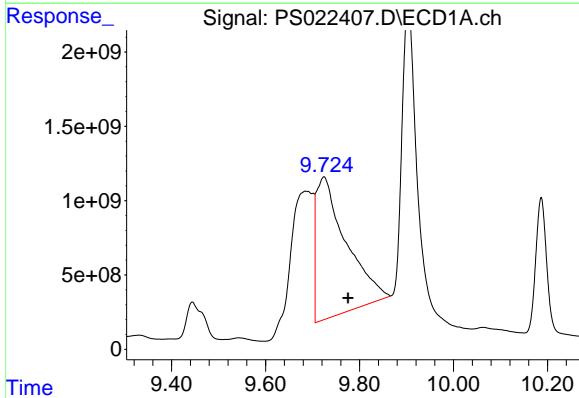
R.T.: 8.755 min
 Delta R.T.: 0.020 min
 Response: 5050699322
 Conc: 1863.09 ng/m

Instrument :
 ECD_S
 ClientSampleId :



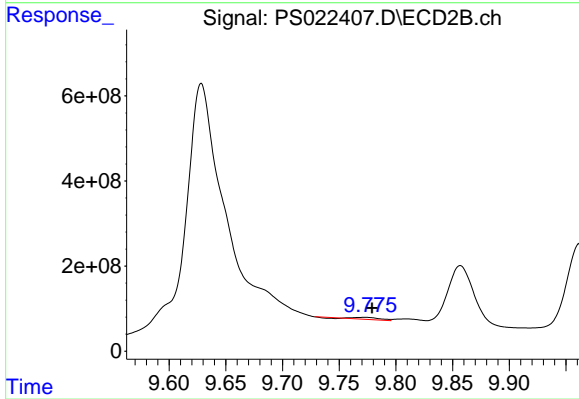
#13 2,4-DB

R.T.: 9.463 min
 Delta R.T.: 0.007 min
 Response: -4633082745
 Conc: N.D.



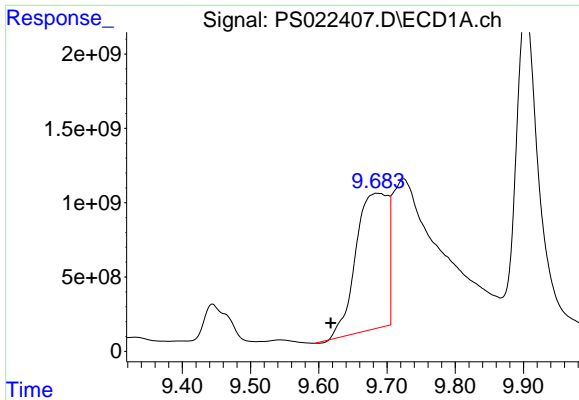
#14 DINOSEB

R.T.: 9.724 min
 Delta R.T.: -0.052 min
 Response: 41762765306
 Conc: 3038.85 ng/ml



#14 DINOSEB

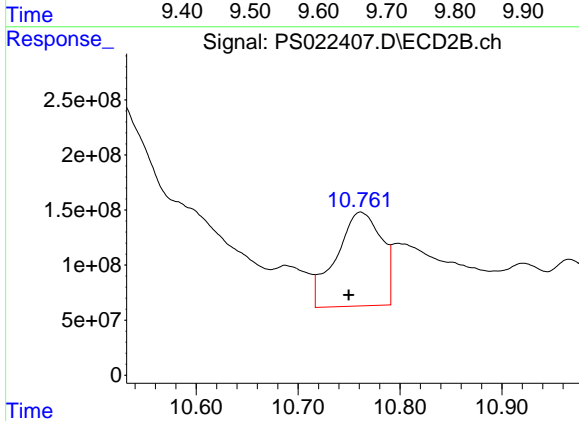
R.T.: 9.773 min
 Delta R.T.: -0.006 min
 Response: 74606009
 Conc: 7.82 ng/ml



#15 Picloram

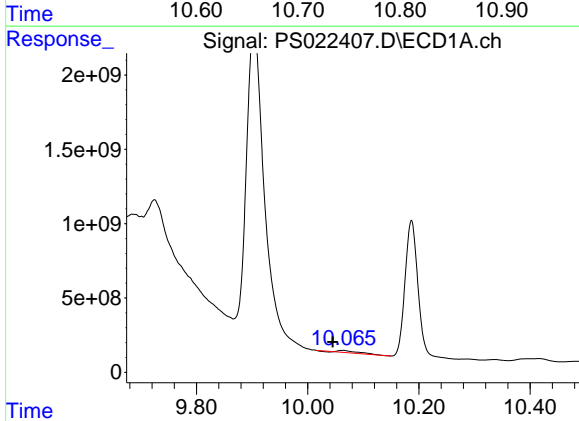
R.T.: 9.686 min
 Delta R.T.: 0.069 min
 Response: 29918280418
 Conc: 1214.51 ng/ml

Instrument :
 ECD_S
 ClientSampleId :



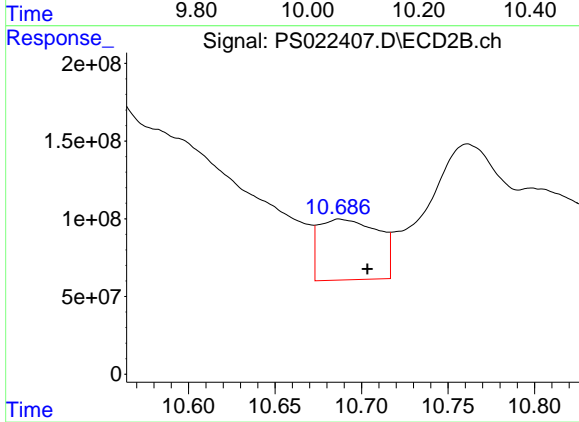
#15 Picloram

R.T.: 10.761 min
 Delta R.T.: 0.011 min
 Response: 2635772498
 Conc: 134.44 ng/ml



#16 DCPA

R.T.: 10.063 min
 Delta R.T.: 0.018 min
 Response: 331980765
 Conc: 15.59 ng/ml



#16 DCPA

R.T.: 10.687 min
 Delta R.T.: -0.016 min
 Response: 929712264
 Conc: 59.43 ng/ml