

Data Path : Z:\pestpcbsrv\HPCHEM1\ECD_S\Data\PS031819\
 Data File : PS003586.D
 Signal(s) : Signal #1: ECD1A.ch Signal #2: ECD2B.ch
 Acq On : 19 Mar 2019 07:06
 Operator : EI\SJ
 Sample : K1897-09
 Misc :
 ALS Vial : 17 Sample Multiplier: 1

Instrument :
 ECD_S
 ClientSampleId :
 TP-2

Integration File signal 1: autoint1.e
 Integration File signal 2: autoint2.e
 Quant Time: Mar 19 08:11:19 2019
 Quant Method : Z:\pestpcbsrv\HPCHEM1\ECD_S\Method\PS022719.M
 Quant Title : 8080.M
 QLast Update : Thu Feb 28 03:00:19 2019
 Response via : Initial Calibration
 Integrator: ChemStation

Volume Inj. : 2 µl
 Signal #1 Phase : Rtx-CLPesticides Signal #2 Phase: Rtx-CLPesticides2
 Signal #1 Info : 30M x 0.32mm x0.5 Signal #2 Info : 30M x 0.32mm x 0.25µm

	Compound	RT#1	RT#2	Resp#1	Resp#2	ng/ml	ng/ml

System Monitoring Compounds							
4) S	2,4-DCAA	11.267	10.771	271.5E6	259.1E6	618.422	551.714
Target Compounds							
1) T	Dalapon	2.790	2.281	36266330	21763059	55.799	34.371 #
2) T	3,5-DICHL...	0.000	8.937	0	13118818	N.D.	21.247 #
5) T	DICAMBA	11.633	11.011	3473777	9028421	1.971	5.404 #
6) T	MCPP	11.940	11.274	157.7E6	189336	120.120	0.160 #
7) T	MCPA	12.118	0.000	24202874	0	12.202	N.D. #
9) T	2,4-D	0.000	12.630	0	1106232	N.D.	2.108 #
11) T	2,4,5-TP ...	0.000	13.843	0	1172750	N.D.	0.461 #
12) T	2,4,5-T	0.000	14.352	0	4359118	N.D.	2.161 #
13) T	2,4-DB	0.000	15.000	0	3846387	N.D.	15.063 #
14) T	DINOSEB	0.000	15.434	0	888770	N.D.	0.498 #
15) T	Picloram	16.738	16.688	28763184	5414035	11.686	2.133 #
16) T	DCPA	0.000	16.646	0	5275493	N.D.	1.696 #

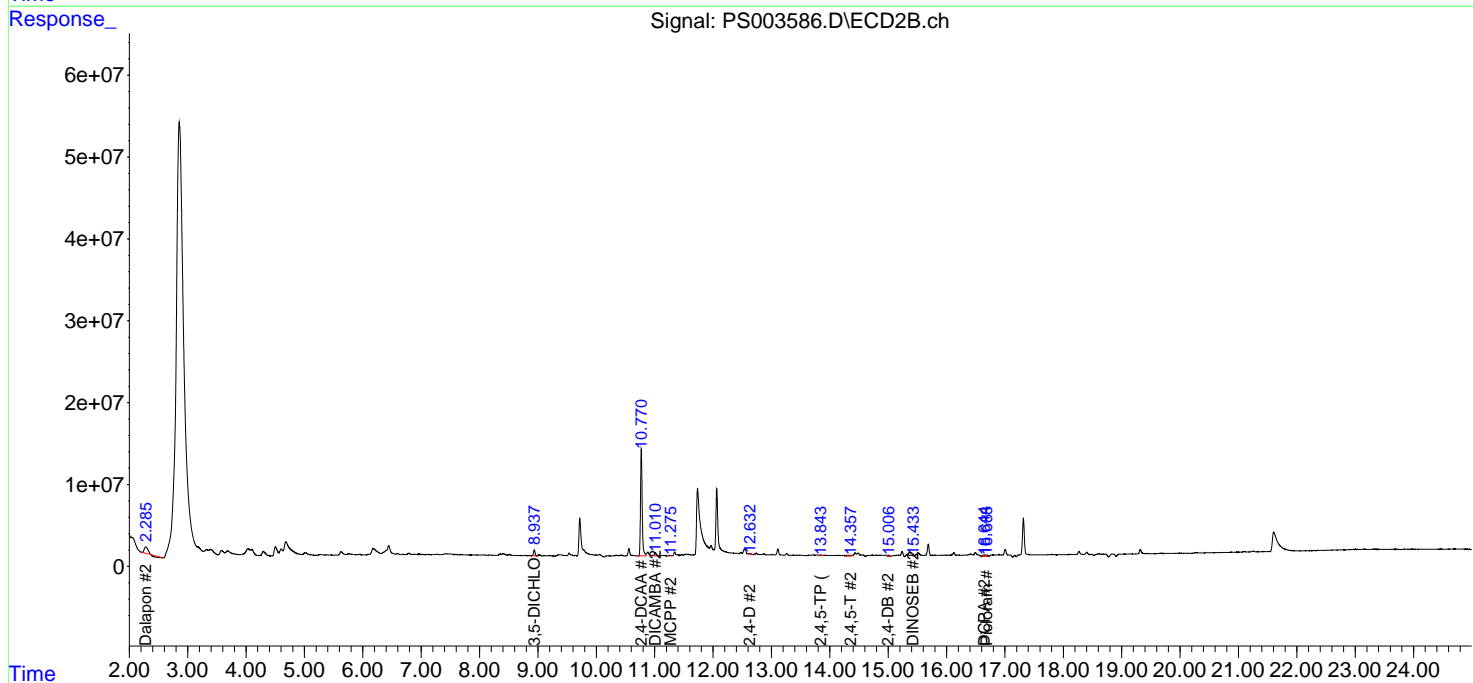
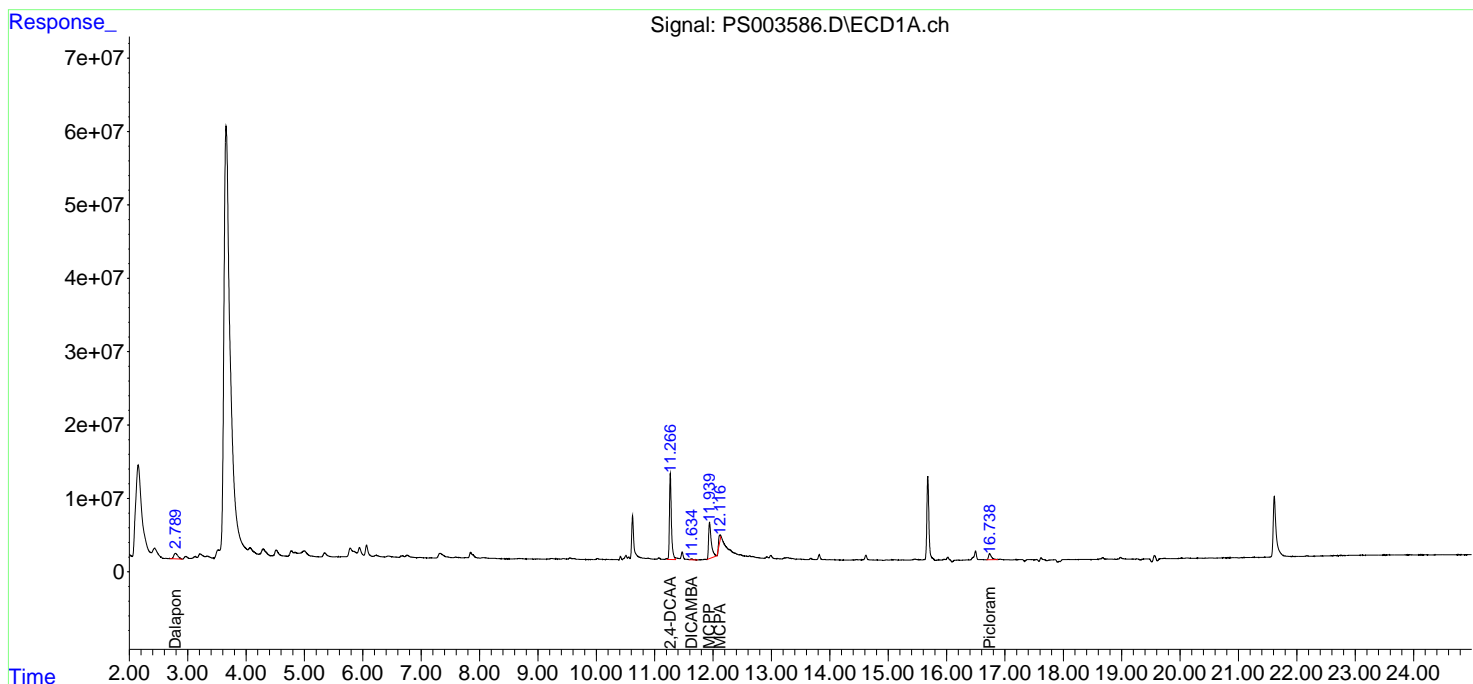
(f)=RT Delta > 1/2 Window (#)=Amounts differ by > 25% (m)=manual int.

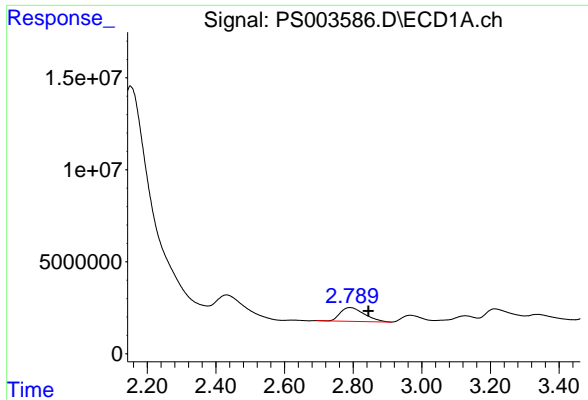
Data Path : Z:\pestpcbsrv\HPCHEM1\ECD_S\Data\PS031819\
 Data File : PS003586.D
 Signal(s) : Signal #1: ECD1A.ch Signal #2: ECD2B.ch
 Acq On : 19 Mar 2019 07:06
 Operator : EI\SJ
 Sample : K1897-09
 Misc :
 ALS Vial : 17 Sample Multiplier: 1

Instrument :
 ECD_S
 ClientSampled :
 TP-2

Integration File signal 1: autoint1.e
 Integration File signal 2: autoint2.e
 Quant Time: Mar 19 08:11:19 2019
 Quant Method : Z:\pestpcbsrv\HPCHEM1\ECD_S\Method\PS022719.M
 Quant Title : 8080.M
 QLast Update : Thu Feb 28 03:00:19 2019
 Response via : Initial Calibration
 Integrator: ChemStation

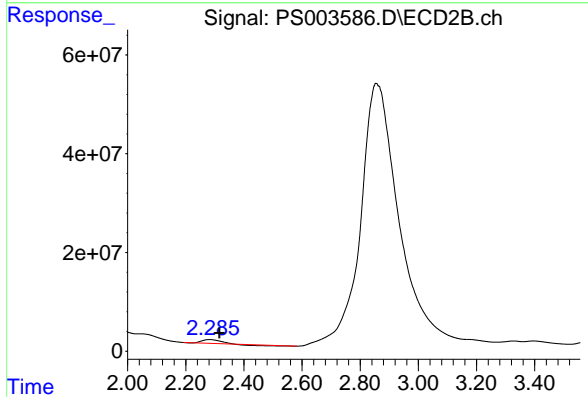
Volume Inj. : 2 µl
 Signal #1 Phase : Rtx-CLPesticides Signal #2 Phase: Rtx-CLPesticides2
 Signal #1 Info : 30M x 0.32mm x0.5 Signal #2 Info : 30M x 0.32mm x 0.25µm



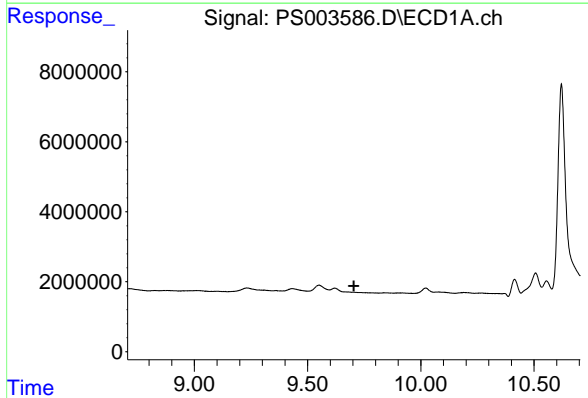


#1 Dalapon
 R.T.: 2.790 min
 Delta R.T.: -0.054 min
 Response: 36266330
 Conc: 55.80 ng/ml

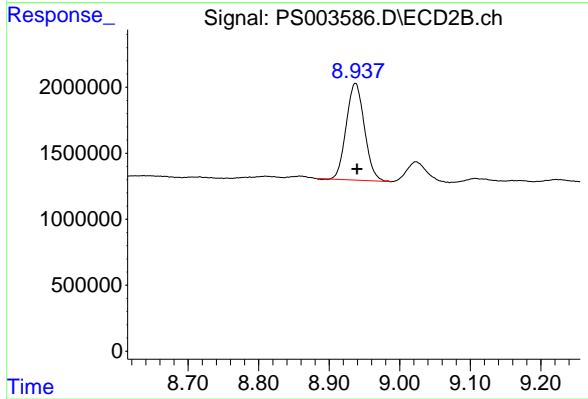
Instrument :
 ECD_S
 ClientSampled :
 TP-2



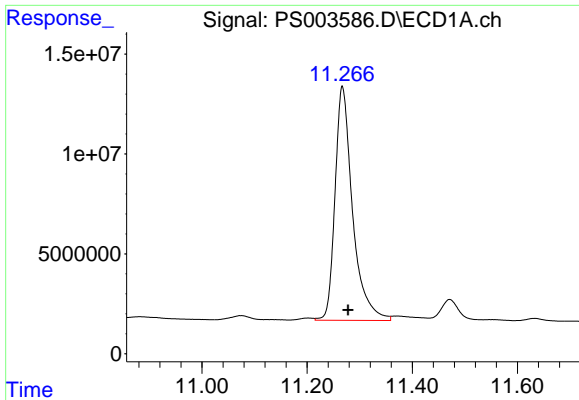
#1 Dalapon
 R.T.: 2.281 min
 Delta R.T.: -0.035 min
 Response: 21763059
 Conc: 34.37 ng/ml



#2 3,5-DICHLOROBENZOIC ACID
 R.T.: 0.000 min
 Exp R.T. : 9.705 min
 Response: 0
 Conc: N.D.

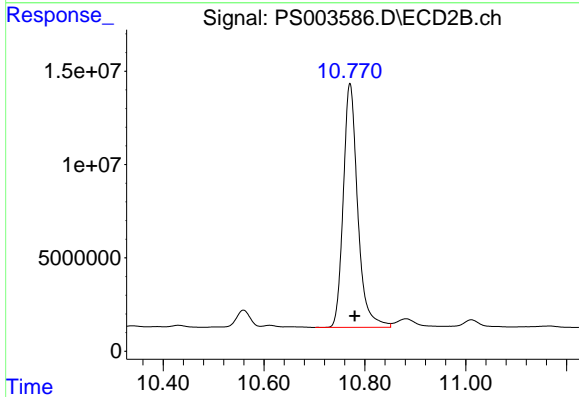


#2 3,5-DICHLOROBENZOIC ACID
 R.T.: 8.937 min
 Delta R.T.: -0.002 min
 Response: 13118818
 Conc: 21.25 ng/ml

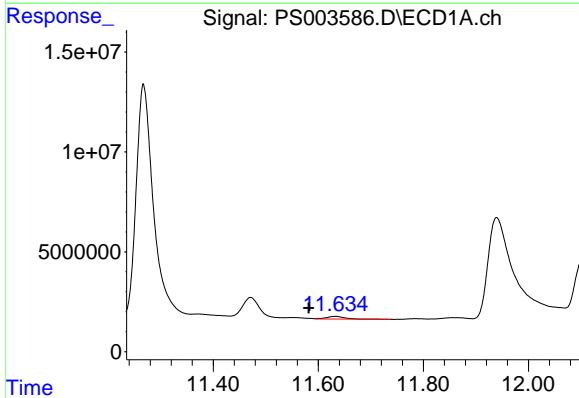


#4 2,4-DCAA
 R.T.: 11.267 min
 Delta R.T.: -0.010 min
 Response: 271502521
 Conc: 618.42 ng/ml

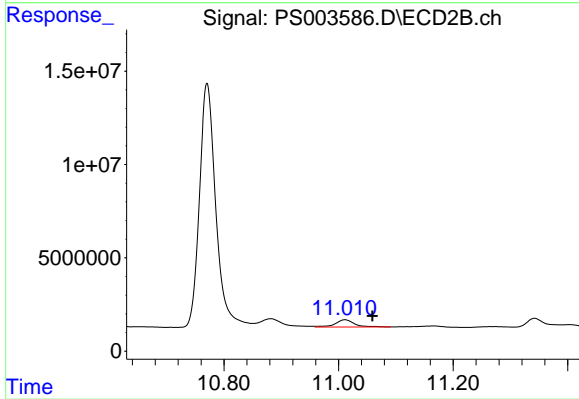
Instrument :
 ECD_S
 ClientSampled :
 TP-2



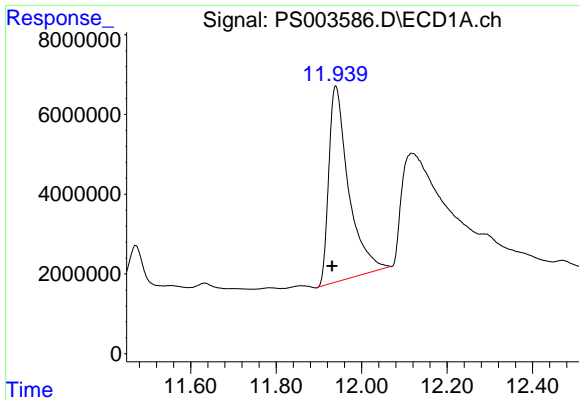
#4 2,4-DCAA
 R.T.: 10.771 min
 Delta R.T.: -0.009 min
 Response: 259067709
 Conc: 551.71 ng/ml



#5 DICAMBA
 R.T.: 11.633 min
 Delta R.T.: 0.051 min
 Response: 3473777
 Conc: 1.97 ng/ml

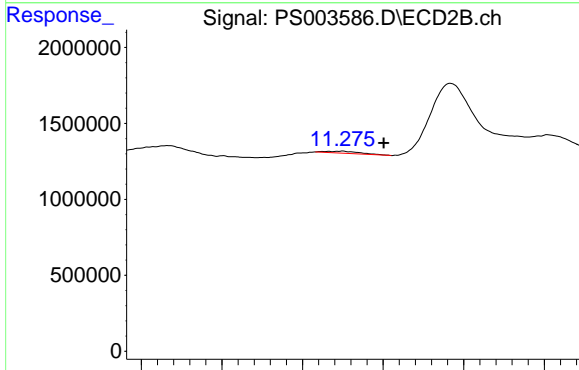


#5 DICAMBA
 R.T.: 11.011 min
 Delta R.T.: -0.048 min
 Response: 9028421
 Conc: 5.40 ng/ml

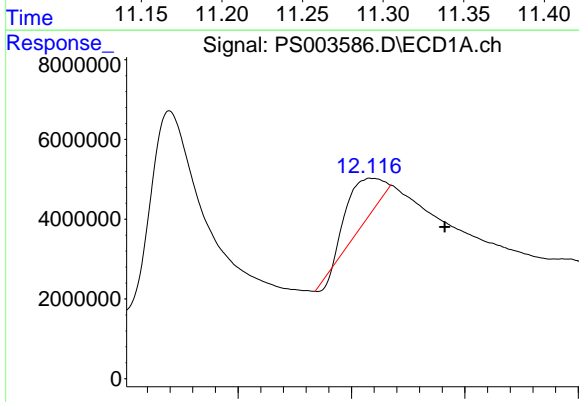


#6 MCP
 R.T.: 11.940 min
 Delta R.T.: 0.009 min
 Response: 157706222
 Conc: 120.12 ug/ml

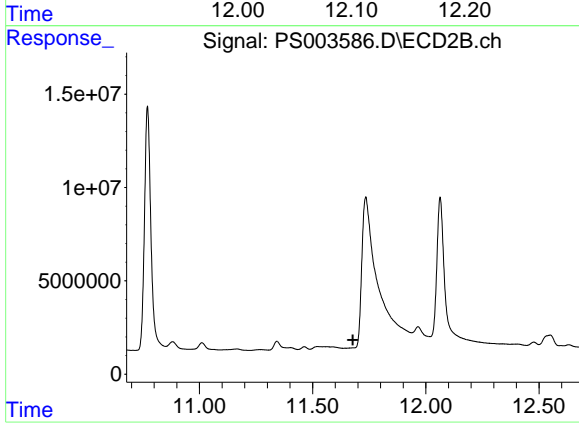
Instrument :
 ECD_S
 ClientSampled :
 TP-2



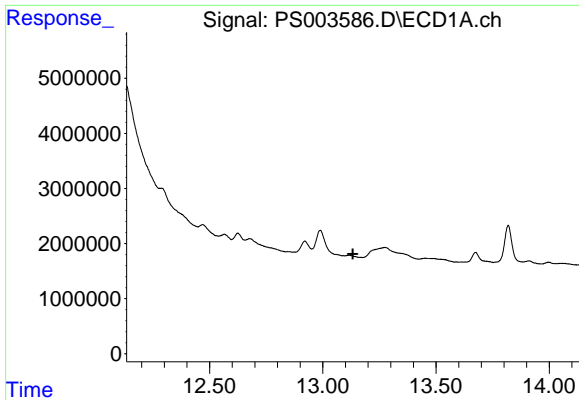
#6 MCP
 R.T.: 11.274 min
 Delta R.T.: -0.027 min
 Response: 189336
 Conc: 0.16 ug/ml



#7 MCP
 R.T.: 12.118 min
 Delta R.T.: -0.064 min
 Response: 24202874
 Conc: 12.20 ug/ml

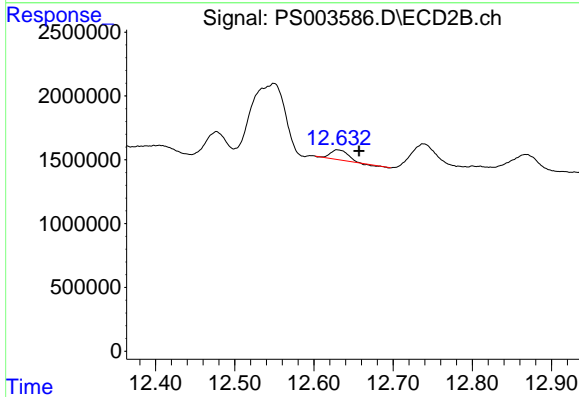


#7 MCP
 R.T.: 0.000 min
 Exp R.T. : 11.678 min
 Response: 0
 Conc: N.D.

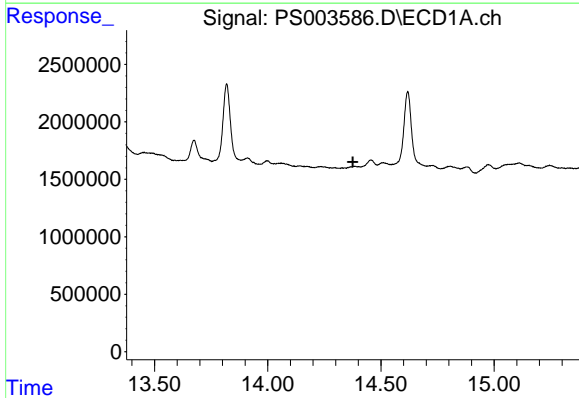


#9 2,4-D
 R.T.: 0.000 min
 Exp R.T.: 13.133 min
 Response: 0
 Conc: N.D.

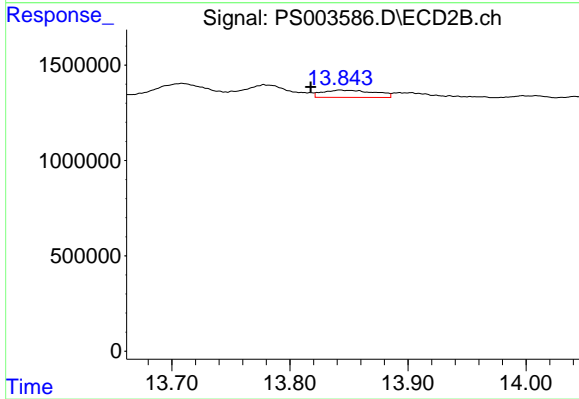
Instrument :
 ECD_S
 ClientSampleId :
 TP-2



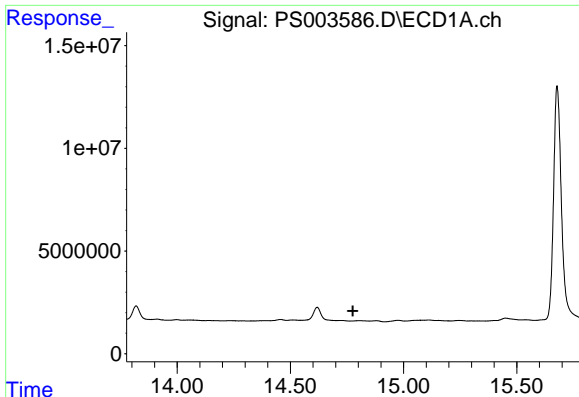
#9 2,4-D
 R.T.: 12.630 min
 Delta R.T.: -0.027 min
 Response: 1106232
 Conc: 2.11 ng/ml



#11 2,4,5-TP (SILVEX)
 R.T.: 0.000 min
 Exp R.T.: 14.376 min
 Response: 0
 Conc: N.D.



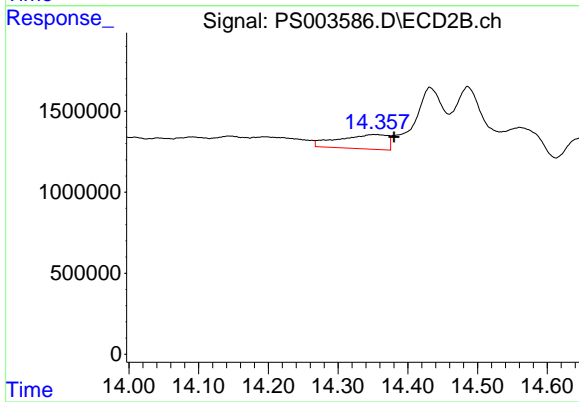
#11 2,4,5-TP (SILVEX)
 R.T.: 13.843 min
 Delta R.T.: 0.025 min
 Response: 1172750
 Conc: 0.46 ng/ml



#12 2,4,5-T

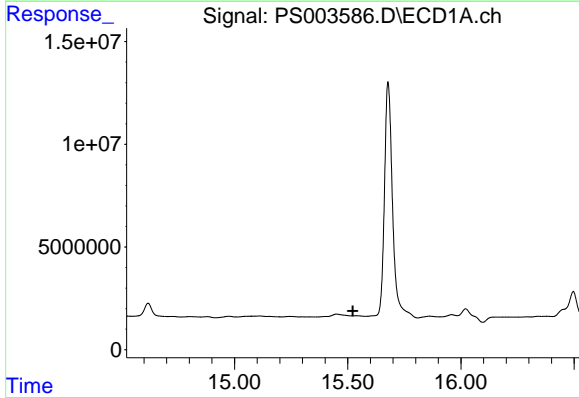
R.T.: 0.000 min
 Exp R.T. : 14.776 min
 Response: 0
 Conc: N.D.

Instrument :
 ECD_S
 ClientSampled :
 TP-2



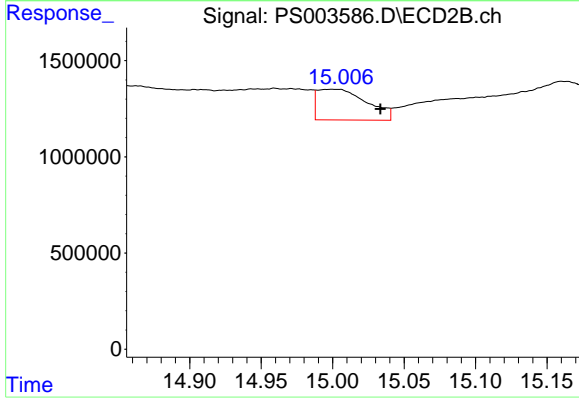
#12 2,4,5-T

R.T.: 14.352 min
 Delta R.T.: -0.028 min
 Response: 4359118
 Conc: 2.16 ng/ml



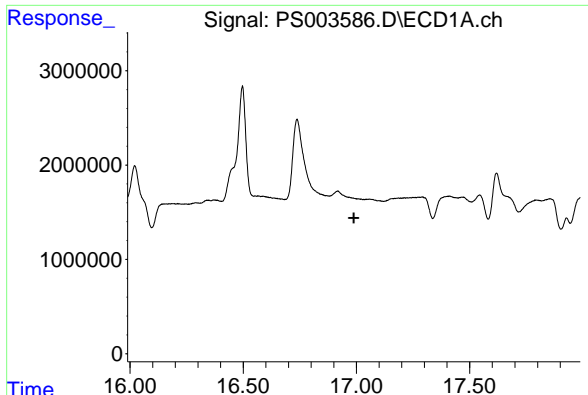
#13 2,4-DB

R.T.: 0.000 min
 Exp R.T. : 15.523 min
 Response: 0
 Conc: N.D.



#13 2,4-DB

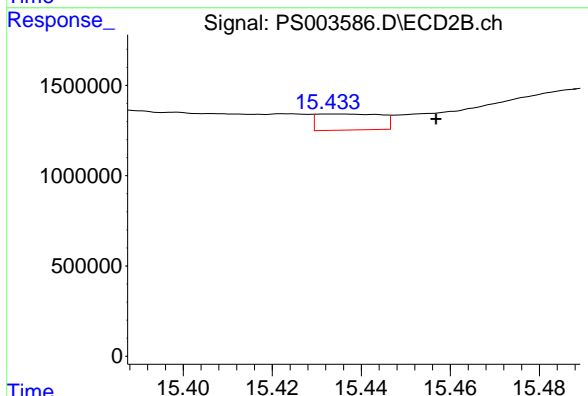
R.T.: 15.000 min
 Delta R.T.: -0.033 min
 Response: 3846387
 Conc: 15.06 ng/ml



#14 DINOSEB

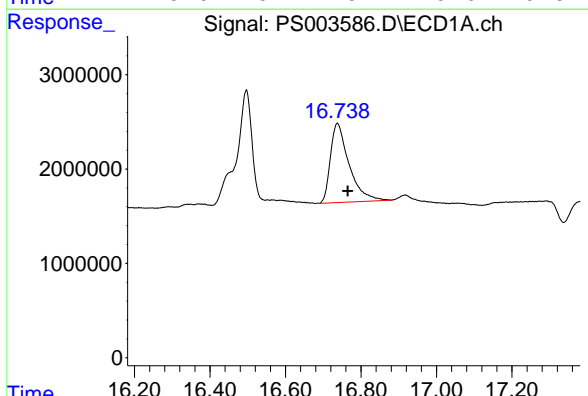
R.T.: 0.000 min
 Exp R.T.: 16.989 min
 Response: 0
 Conc: N.D.

Instrument :
 ECD_S
 ClientSampleId :
 TP-2



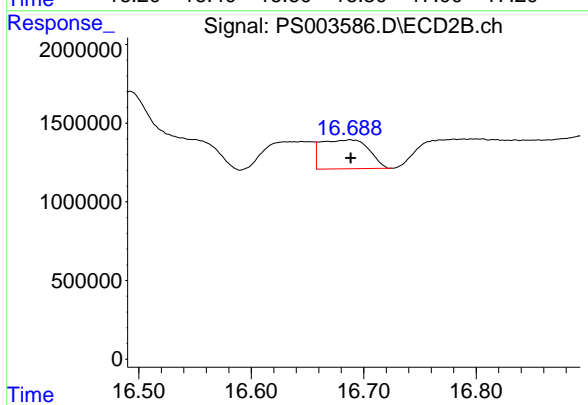
#14 DINOSEB

R.T.: 15.434 min
 Delta R.T.: -0.023 min
 Response: 888770
 Conc: 0.50 ng/ml



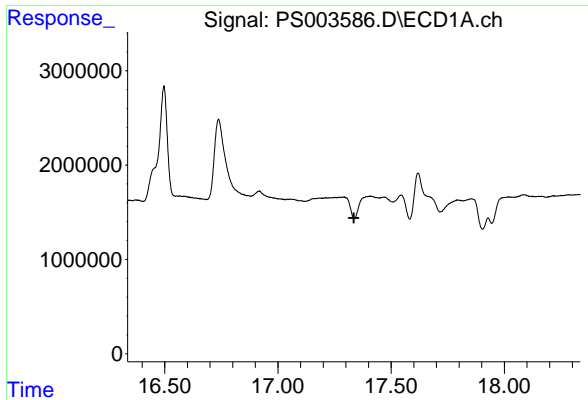
#15 Picloram

R.T.: 16.738 min
 Delta R.T.: -0.027 min
 Response: 28763184
 Conc: 11.69 ng/ml



#15 Picloram

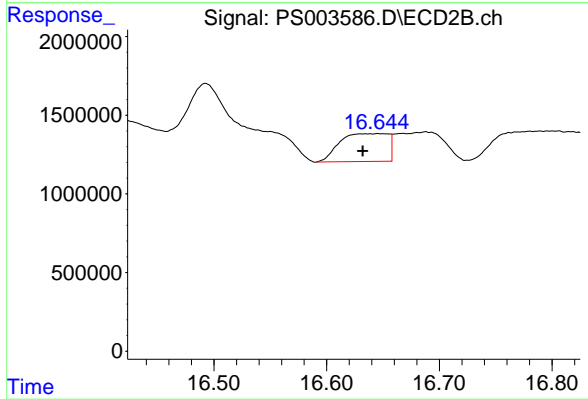
R.T.: 16.688 min
 Delta R.T.: 0.000 min
 Response: 5414035
 Conc: 2.13 ng/ml



#16 DCPA

R.T.: 0.000 min
Exp R.T.: 17.335 min
Response: 0
Conc: N.D.

Instrument :
ECD_S
ClientSampleId :
TP-2



#16 DCPA

R.T.: 16.646 min
Delta R.T.: 0.014 min
Response: 5275493
Conc: 1.70 ng/ml