

Data Path : Z:\pestpcbsrv\HPCHEM1\ECD_S\Data\PS031920\
 Data File : PS009373.D
 Signal(s) : Signal #1: ECD1A.ch Signal #2: ECD2B.ch
 Acq On : 19 Mar 2020 20:30
 Operator : DD\AJ
 Sample : HSTDCCC750
 Misc :
 ALS Vial : 3 Sample Multiplier: 1

Instrument :
 ECD_S
 ClientSampleId :

Integration File signal 1: autoint1.e
 Integration File signal 2: autoint2.e
 Quant Time: Mar 20 03:48:27 2020
 Quant Method : Z:\pestpcbsrv\HPCHEM1\ECD_S\Method\PS031120.M
 Quant Title : 8080.M
 QLast Update : Thu Mar 12 07:13:24 2020
 Response via : Initial Calibration
 Integrator: ChemStation

Volume Inj. : 2 µl
 Signal #1 Phase : Rtx-CLPesticides Signal #2 Phase: Rtx-CLPesticides2
 Signal #1 Info : 30M x 0.32mm x0.5 Signal #2 Info : 30M x 0.32mm x 0.25µm

	Compound	RT#1	RT#2	Resp#1	Resp#2	ng/ml	ng/ml

System Monitoring Compounds							
4) S	2,4-DCAA	7.242	6.933	490.9E6	445.8E6	887.451	811.794
Target Compounds							
1) T	Dalapon	3.047	2.631	561.4E6	497.5E6	719.954	631.911
2) T	3,5-DICHL...	6.451	6.078	622.2E6	607.5E6	824.266	746.891
3) T	4-Nitroph...	7.070	6.534	197.8E6	232.5E6	828.773	730.639
5) T	DICAMBA	7.434	7.103	1715.4E6	1688.1E6	806.033	735.365
6) T	MCP P	7.605	7.202	138.1E6	144.5E6	56.121	79.454 #
7) T	MCPA	7.755	7.418	193.2E6	198.5E6	63.434	73.551
8) T	DICHLORPROP	8.128	7.731	417.2E6	422.4E6	809.017	761.300
9) T	2,4-D	8.357	8.024	430.2E6	500.2E6	815.990	760.883
10) T	Pentachlo...	8.670	8.458	5505.2E6	5334.9E6	782.971	702.894
11) T	2,4,5-TP ...	9.219	8.818	2220.3E6	2254.5E6	809.961	756.252
12) T	2,4,5-T	9.503	9.197	2069.8E6	2241.5E6	813.650	759.270
13) T	2,4-DB	10.056	9.704	280.0E6	300.6E6	809.333	791.782
14) T	DINOSEB	11.222	10.040	1590.4E6	1615.6E6	778.041	735.545
15) T	Picloram	11.035	11.019	1726.6E6	2127.8E6	568.918	522.532
16) T	DCPA	11.486	10.969	2741.0E6	2932.2E6	790.763	757.085

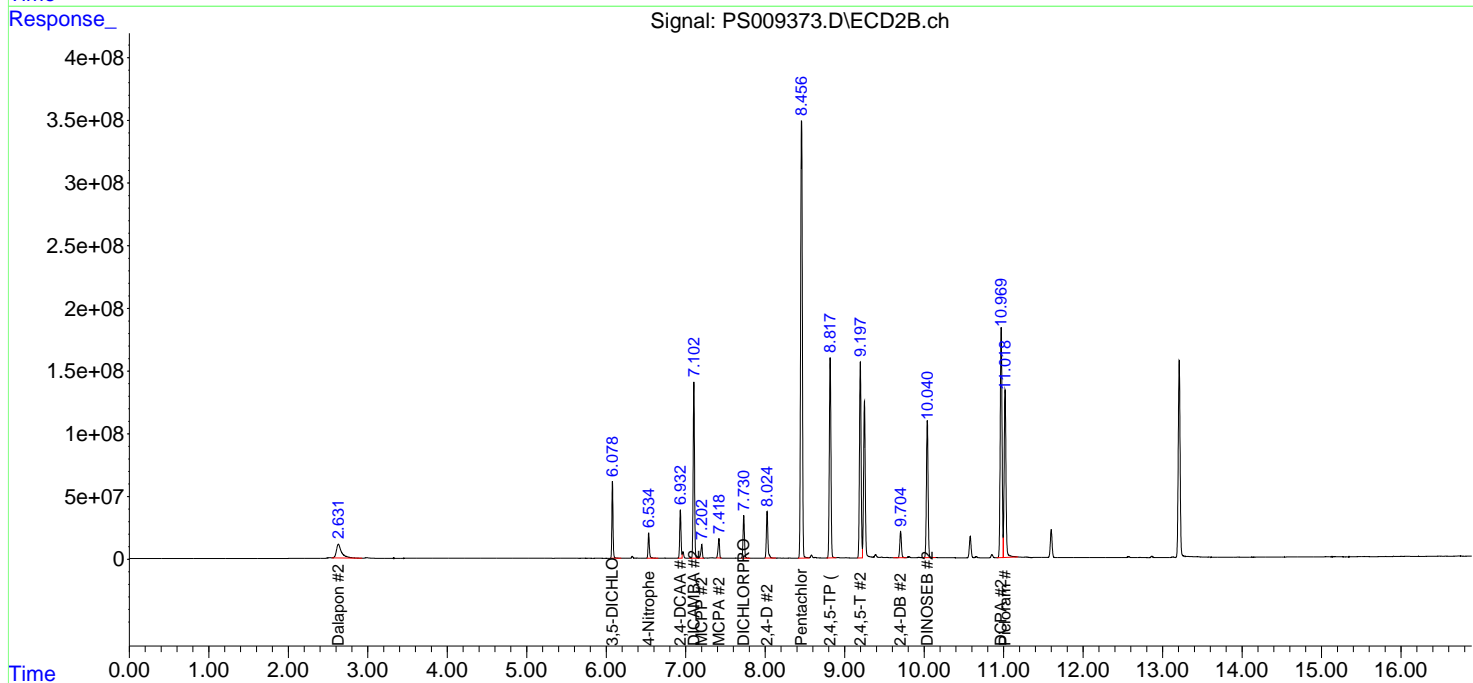
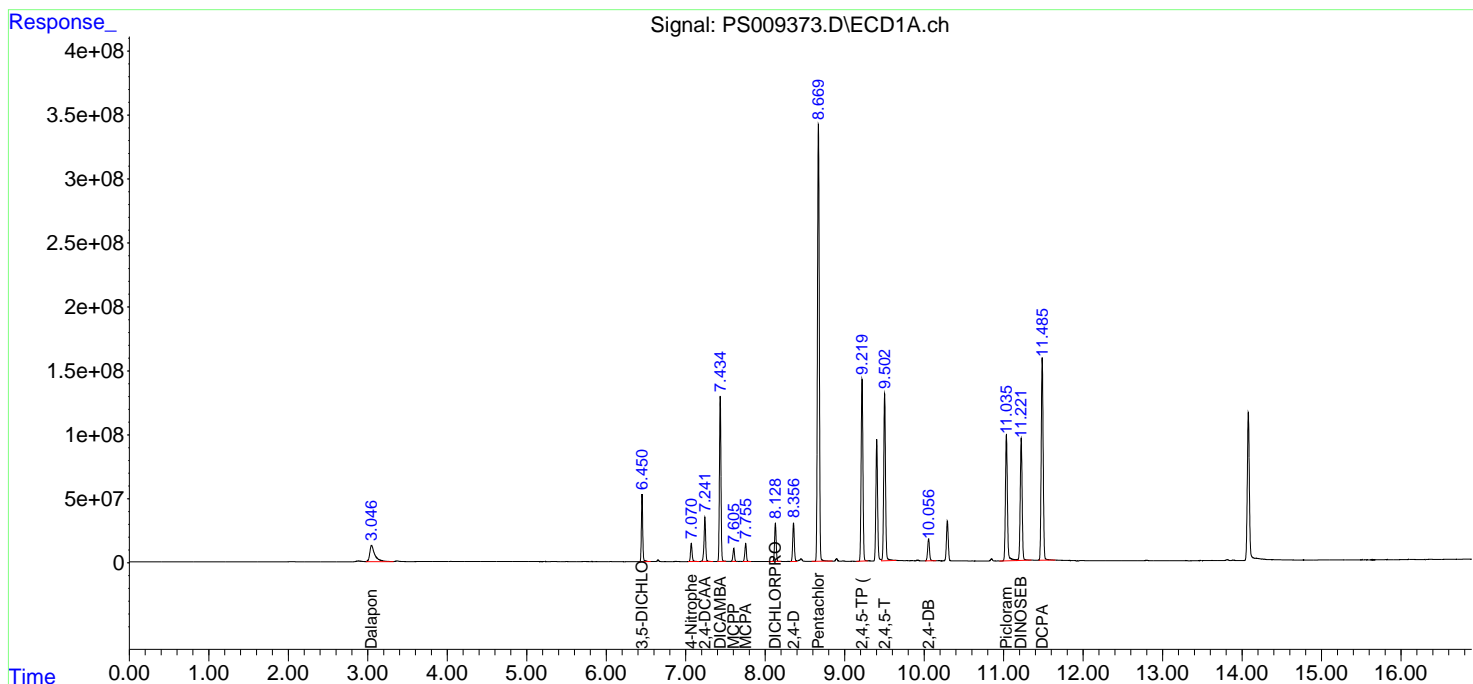
(f)=RT Delta > 1/2 Window (#)=Amounts differ by > 25% (m)=manual int.

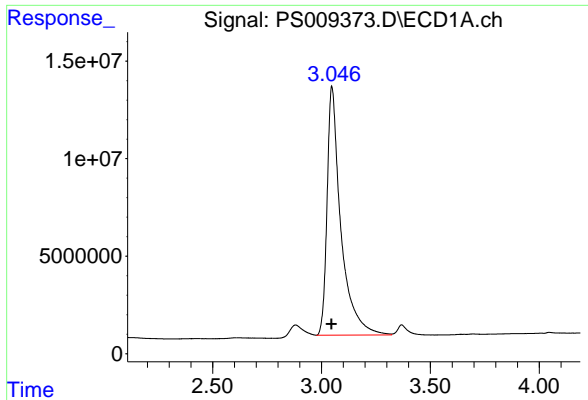
Data Path : Z:\pestpcbsrv\HPCHEM1\ECD_S\Data\PS031920\
 Data File : PS009373.D
 Signal(s) : Signal #1: ECD1A.ch Signal #2: ECD2B.ch
 Acq On : 19 Mar 2020 20:30
 Operator : DD\AJ
 Sample : HSTDCCC750
 Misc :
 ALS Vial : 3 Sample Multiplier: 1

Instrument :
 ECD_S
 ClientSampled :

Integration File signal 1: autoint1.e
 Integration File signal 2: autoint2.e
 Quant Time: Mar 20 03:48:27 2020
 Quant Method : Z:\pestpcbsrv\HPCHEM1\ECD_S\Method\PS031120.M
 Quant Title : 8080.M
 QLast Update : Thu Mar 12 07:13:24 2020
 Response via : Initial Calibration
 Integrator: ChemStation

Volume Inj. : 2 µl
 Signal #1 Phase : Rtx-CLPesticides Signal #2 Phase: Rtx-CLPesticides2
 Signal #1 Info : 30M x 0.32mm x0.5 Signal #2 Info : 30M x 0.32mm x 0.25µm

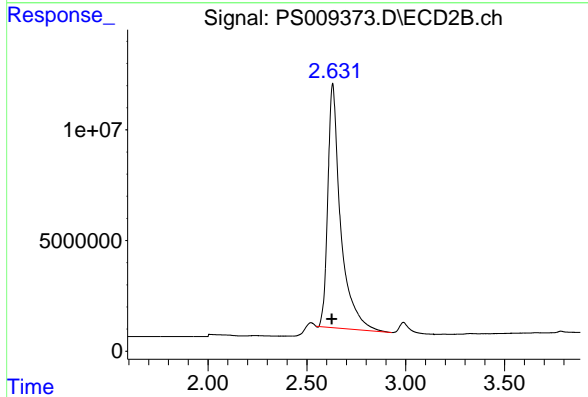




#1 Dalapon

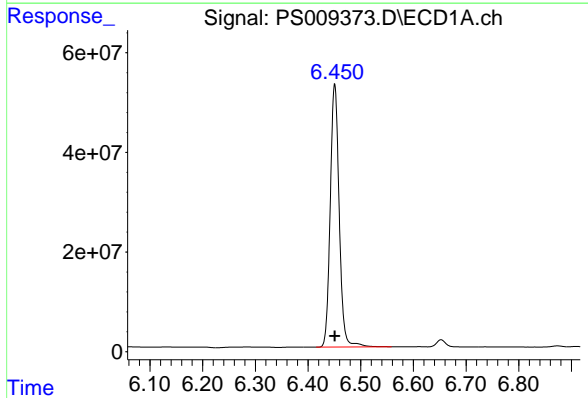
R.T.: 3.047 min
 Delta R.T.: 0.000 min
 Response: 561444714
 Conc: 719.95 ng/ml

Instrument :
 ECD_S
 ClientSampled :



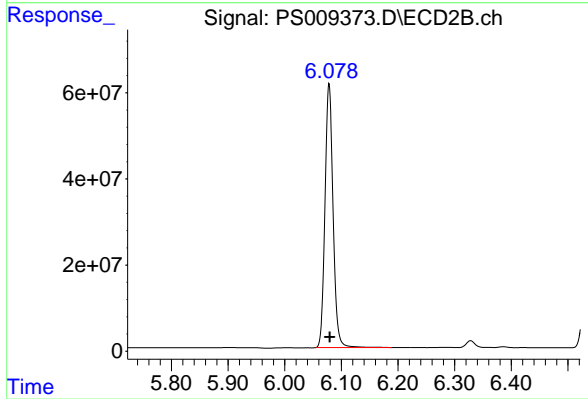
#1 Dalapon

R.T.: 2.631 min
 Delta R.T.: 0.004 min
 Response: 497543456
 Conc: 631.91 ng/ml



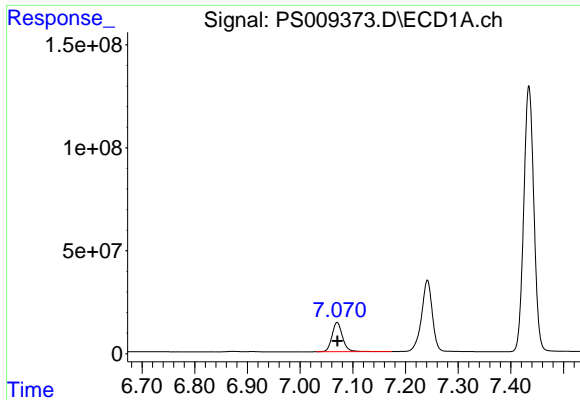
#2 3,5-DICHLOROBENZOIC ACID

R.T.: 6.451 min
 Delta R.T.: 0.000 min
 Response: 622154148
 Conc: 824.27 ng/ml



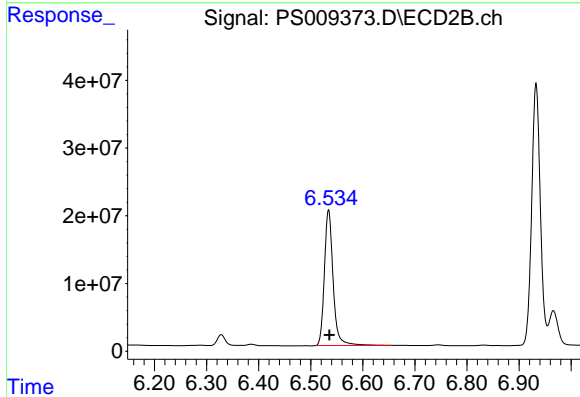
#2 3,5-DICHLOROBENZOIC ACID

R.T.: 6.078 min
 Delta R.T.: -0.001 min
 Response: 607451181
 Conc: 746.89 ng/ml

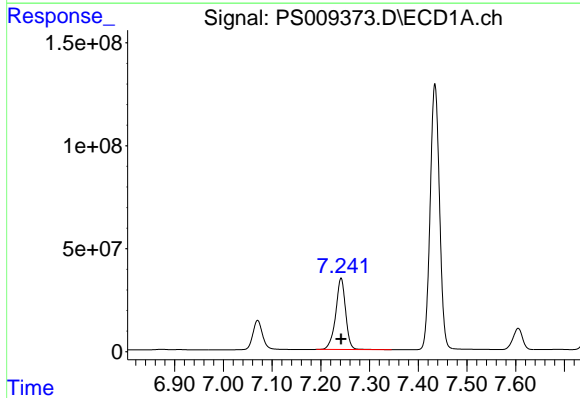


#3 4-Nitrophenol
 R.T.: 7.070 min
 Delta R.T.: 0.000 min
 Response: 197838727
 Conc: 828.77 ng/ml

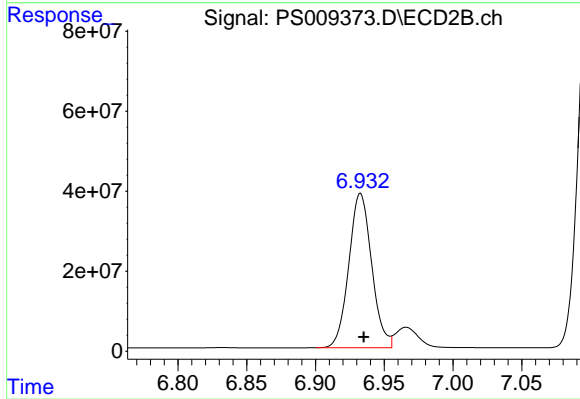
Instrument :
 ECD_S
 ClientSampled :



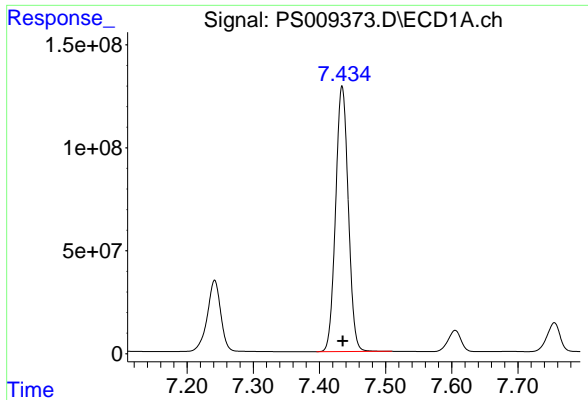
#3 4-Nitrophenol
 R.T.: 6.534 min
 Delta R.T.: -0.002 min
 Response: 232487957
 Conc: 730.64 ng/ml



#4 2,4-DCAA
 R.T.: 7.242 min
 Delta R.T.: 0.000 min
 Response: 490911564
 Conc: 887.45 ng/ml

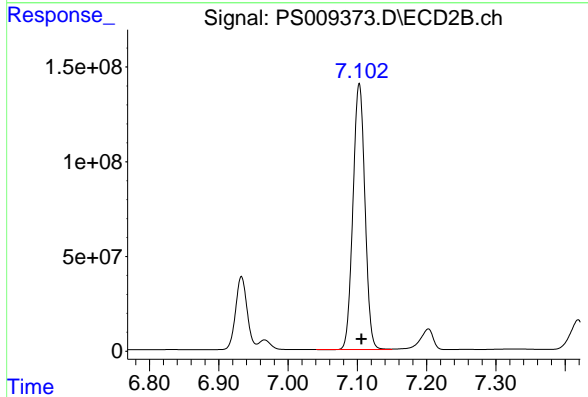


#4 2,4-DCAA
 R.T.: 6.933 min
 Delta R.T.: -0.002 min
 Response: 445835159
 Conc: 811.79 ng/ml

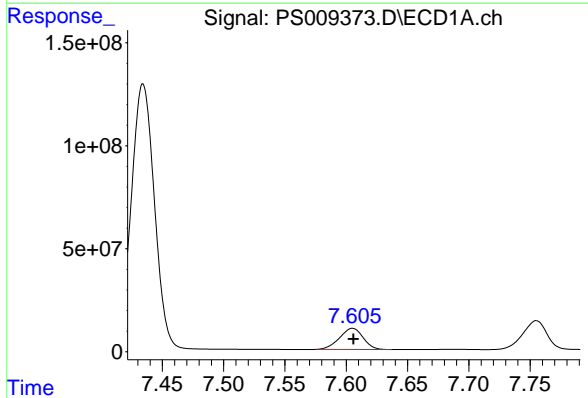


#5 DICAMBA
 R.T.: 7.434 min
 Delta R.T.: 0.000 min
 Response: 1715372137
 Conc: 806.03 ng/ml

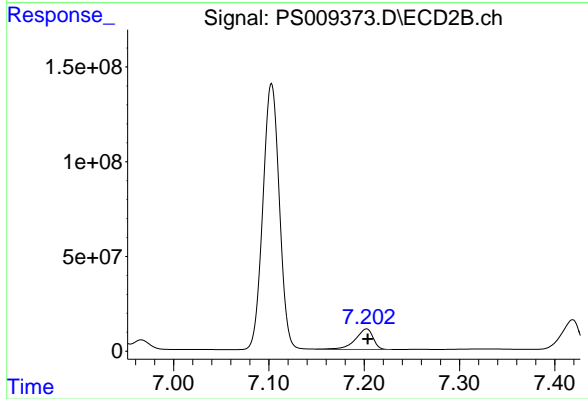
Instrument :
 ECD_S
 ClientSampleId :



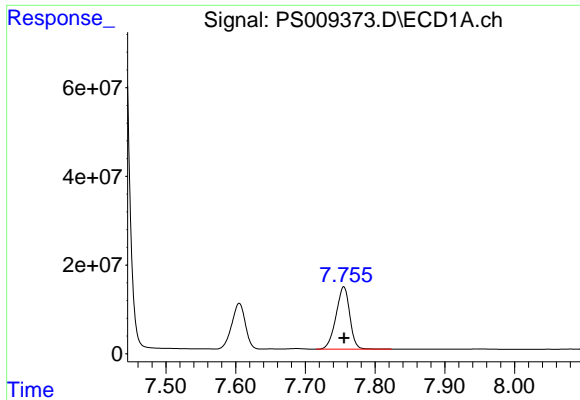
#5 DICAMBA
 R.T.: 7.103 min
 Delta R.T.: -0.003 min
 Response: 1688105936
 Conc: 735.37 ng/ml



#6 MCP
 R.T.: 7.605 min
 Delta R.T.: 0.000 min
 Response: 138095554
 Conc: 56.12 ug/ml

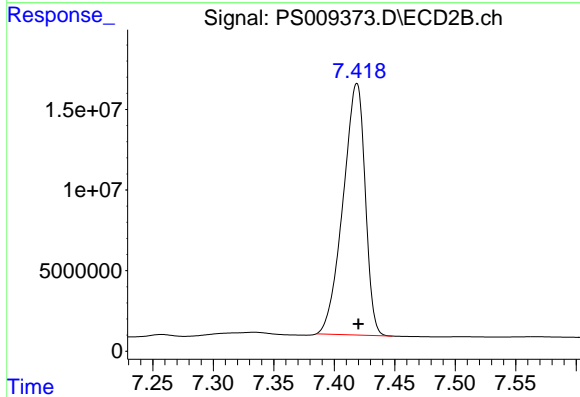


#6 MCP
 R.T.: 7.202 min
 Delta R.T.: -0.001 min
 Response: 144512346
 Conc: 79.45 ug/ml

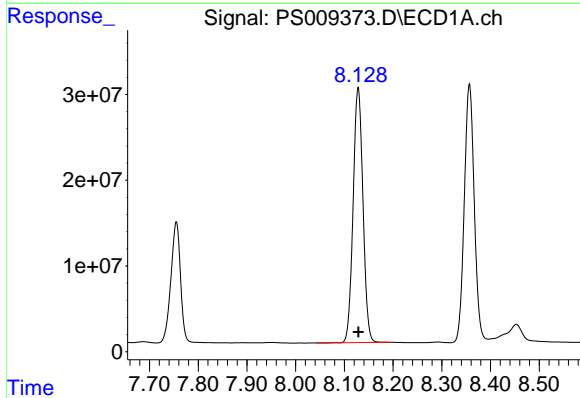


#7 MCPA
 R.T.: 7.755 min
 Delta R.T.: 0.000 min
 Response: 193199781
 Conc: 63.43 ug/ml

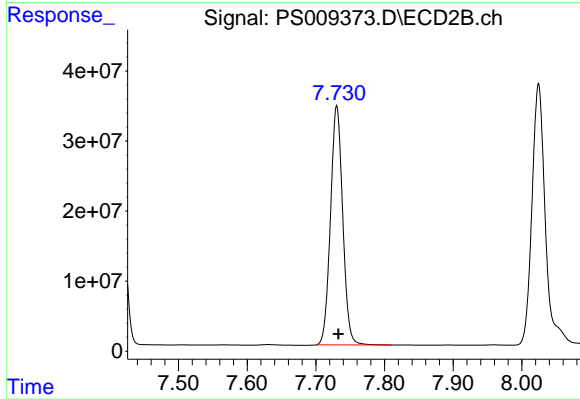
Instrument :
 ECD_S
 ClientSampled :



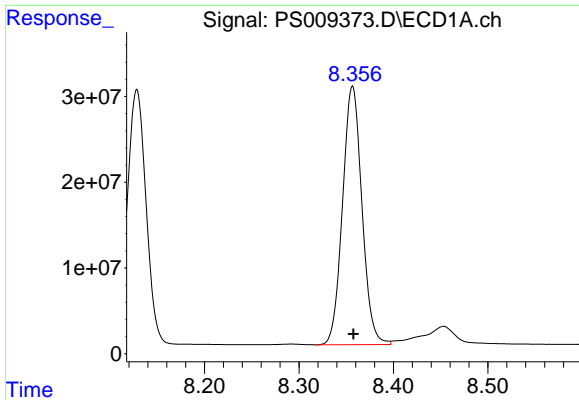
#7 MCPA
 R.T.: 7.418 min
 Delta R.T.: -0.002 min
 Response: 198484708
 Conc: 73.55 ug/ml



#8 DICHLORPROP
 R.T.: 8.128 min
 Delta R.T.: 0.000 min
 Response: 417244719
 Conc: 809.02 ng/ml



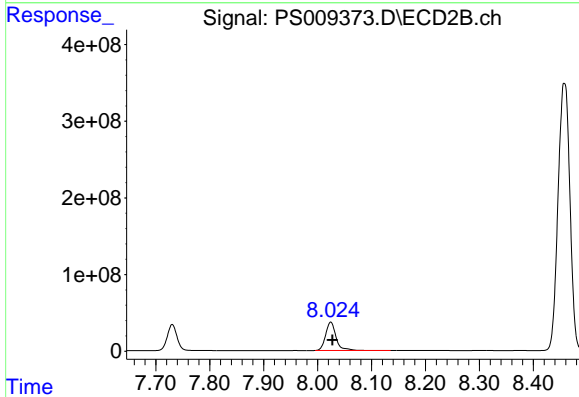
#8 DICHLORPROP
 R.T.: 7.731 min
 Delta R.T.: -0.002 min
 Response: 422386328
 Conc: 761.30 ng/ml



#9 2,4-D

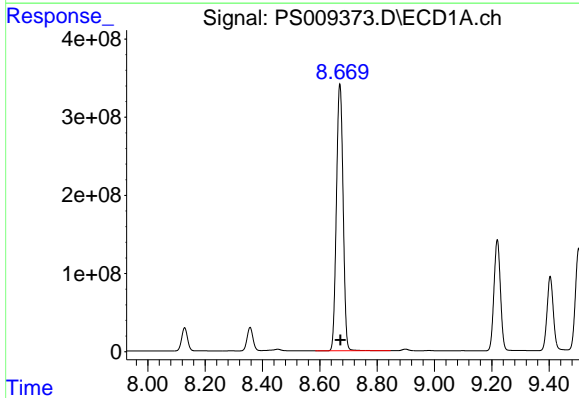
R.T.: 8.357 min
 Delta R.T.: -0.001 min
 Response: 430210477
 Conc: 815.99 ng/ml

Instrument :
 ECD_S
 ClientSampleId :



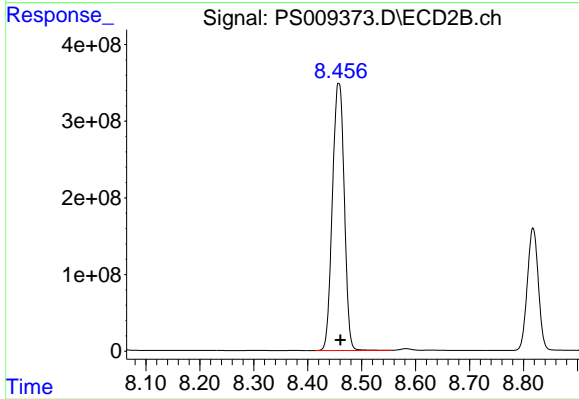
#9 2,4-D

R.T.: 8.024 min
 Delta R.T.: -0.003 min
 Response: 500174877
 Conc: 760.88 ng/ml



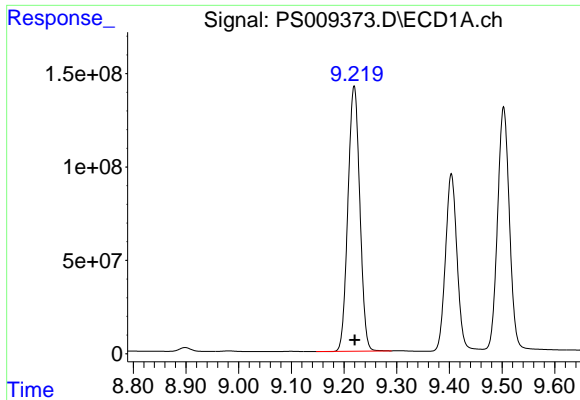
#10 Pentachlorophenol

R.T.: 8.670 min
 Delta R.T.: -0.002 min
 Response: 5505249054
 Conc: 782.97 ng/ml



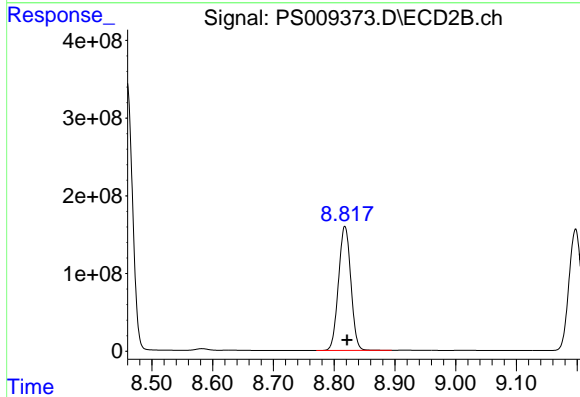
#10 Pentachlorophenol

R.T.: 8.458 min
 Delta R.T.: -0.003 min
 Response: 5334946628
 Conc: 702.89 ng/ml

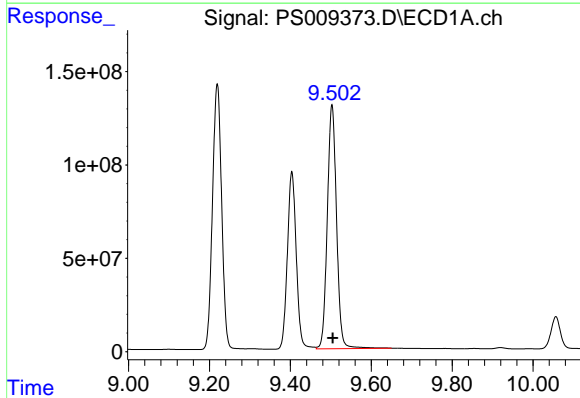


#11 2,4,5-TP (SILVEX)
 R.T.: 9.219 min
 Delta R.T.: -0.001 min
 Response: 2220267319
 Conc: 809.96 ng/ml

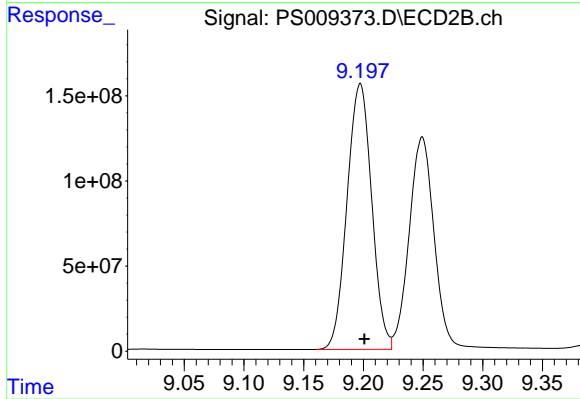
Instrument :
 ECD_S
 ClientSampleId :



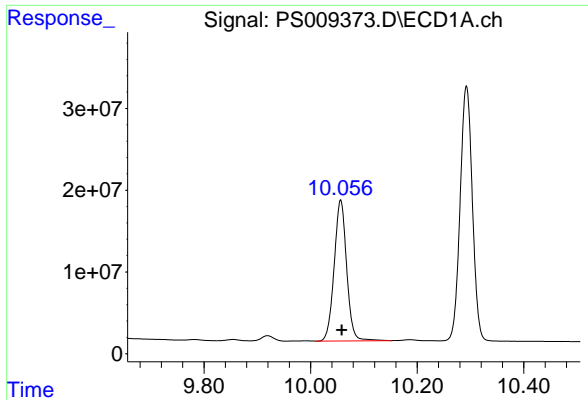
#11 2,4,5-TP (SILVEX)
 R.T.: 8.818 min
 Delta R.T.: -0.004 min
 Response: 2254476827
 Conc: 756.25 ng/ml



#12 2,4,5-T
 R.T.: 9.503 min
 Delta R.T.: -0.002 min
 Response: 2069805187
 Conc: 813.65 ng/ml

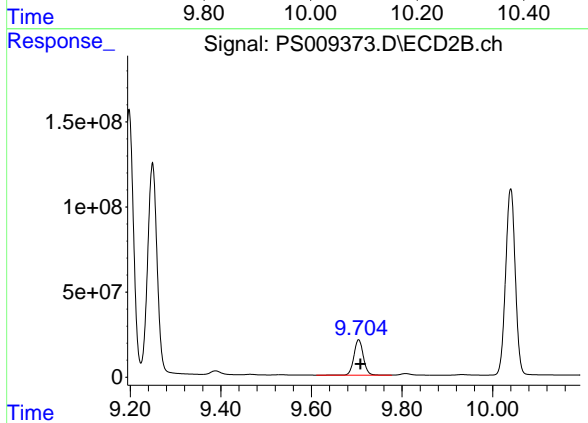


#12 2,4,5-T
 R.T.: 9.197 min
 Delta R.T.: -0.004 min
 Response: 2241498817
 Conc: 759.27 ng/ml

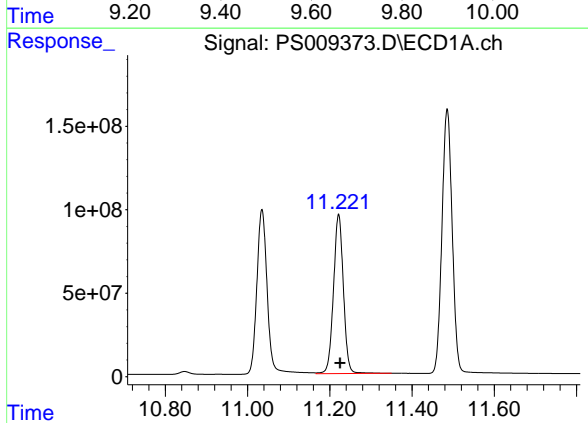


#13 2,4-DB
 R.T.: 10.056 min
 Delta R.T.: -0.002 min
 Response: 279992303
 Conc: 809.33 ng/ml

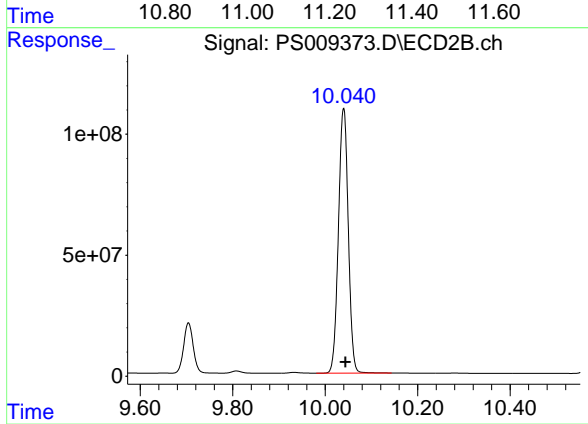
Instrument :
 ECD_S
 ClientSampleId :



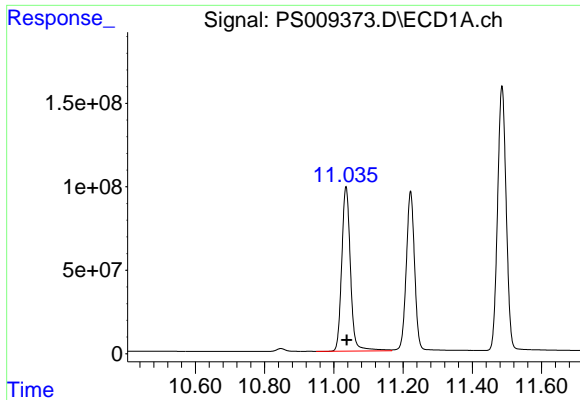
#13 2,4-DB
 R.T.: 9.704 min
 Delta R.T.: -0.004 min
 Response: 300573184
 Conc: 791.78 ng/ml



#14 DINOSEB
 R.T.: 11.222 min
 Delta R.T.: -0.003 min
 Response: 1590432555
 Conc: 778.04 ng/ml

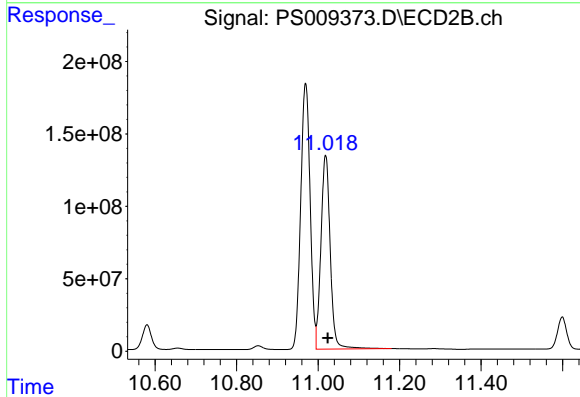


#14 DINOSEB
 R.T.: 10.040 min
 Delta R.T.: -0.004 min
 Response: 1615608036
 Conc: 735.54 ng/ml

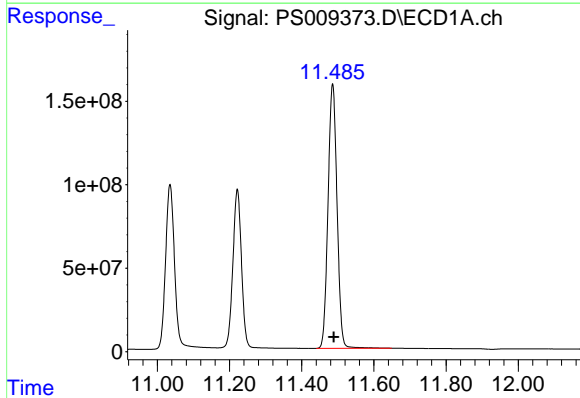


#15 Picloram
 R.T.: 11.035 min
 Delta R.T.: -0.002 min
 Response: 1726626960
 Conc: 568.92 ng/ml

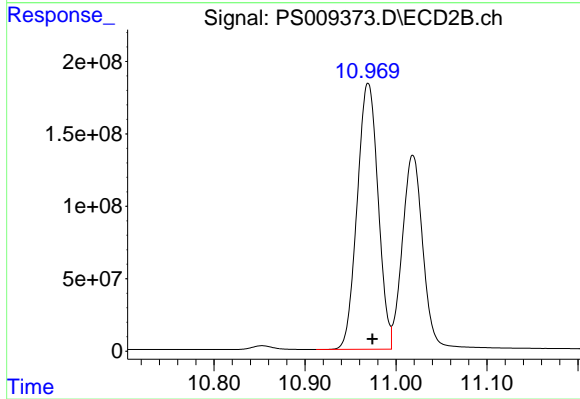
Instrument :
 ECD_S
 ClientSampleId :



#15 Picloram
 R.T.: 11.019 min
 Delta R.T.: -0.005 min
 Response: 2127841659
 Conc: 522.53 ng/ml



#16 DCPA
 R.T.: 11.486 min
 Delta R.T.: -0.003 min
 Response: 2740983398
 Conc: 790.76 ng/ml



#16 DCPA
 R.T.: 10.969 min
 Delta R.T.: -0.005 min
 Response: 2932219185
 Conc: 757.08 ng/ml