

Data Path : Z:\pestpcbsrv\HPCHEM1\ECD_S\Data\PS031925\
 Data File : PS029459-2.D
 Signal(s) : Signal #1: ECD1A.ch Signal #2: ECD2B.ch
 Acq On : 19 Mar 2025 20:45
 Operator : AR\AJ
 Sample : HSTDCCC750
 Misc :
 ALS Vial : 3 Sample Multiplier: 1

Instrument :
 ECD_S
 ClientSampleId :

Integration File signal 1: autoint1.e
 Integration File signal 2: autoint2.e
 Quant Time: Mar 20 01:40:10 2025
 Quant Method : Z:\pestpcbsrv\HPCHEM1\ECD_S\Method\PS022125.M
 Quant Title : 8080.M
 QLast Update : Sat Feb 22 01:02:20 2025
 Response via : Initial Calibration
 Integrator: ChemStation

Volume Inj. : 1 µl
 Signal #1 Phase : ZB-MR2 Signal #2 Phase: ZB-MR2
 Signal #1 Info : 30M x 0.32mm x0.5 Signal #2 Info : 30M x 0.32mm x 0.25µm

Compound	RT#1	RT#2	Resp#1	Resp#2	ng/ml	ng/ml

System Monitoring Compounds						
4) S 2,4-DCAA	7.157	7.657f	3204.3E6	114.6E6	777.639	121.923 #
Target Compounds						
1) T Dalapon	2.595	2.639	3861.1E6	1366.3E6	699.440	645.338
2) T 3,5-DICHL...	6.339	6.581	4269.7E6	908.8E6	729.719	641.757
3) T 4-Nitroph...	6.958	7.139	1425.6E6	498.3E6	609.169	624.779
5) T DICAMBA	7.338	7.796f	13123.9E6	1804.2E6	755.728	350.135 #
6) T MCPP	7.518	7.902f	888.1E6	157.3E6	72.052	67.243
7) T MCPA	7.666	8.140f	1247.1E6	218.2E6	73.596	68.394
8) T DICHLORPROP	8.039	8.503f	3349.7E6	884.3E6	728.766	691.536
9) T 2,4-D	8.270	8.827f	3416.1E6	200.5E6	719.116	157.889 #
10) T Pentachlo...	8.563	9.339f	44651.4E6	17157.8E6	765.152	745.580
11) T 2,4,5-TP ...	9.134	9.717f	18608.4E6	6613.8E6	756.840	731.883
12) T 2,4,5-T	9.427	10.189	19023.4E6	4847.1E6	746.344	590.367
13) T 2,4-DB	9.996	0.000	2675.6E6	0	640.797	N.D. #
14) T DINOSEB	11.186	0.000	11776.3E6	0	708.099	N.D. #
15) T Picloram	11.004	0.000	19395.3E6	0	635.006	N.D. #
16) T DCPA	11.482	12.133	22744.8E6	7466.5E6	758.071	630.801

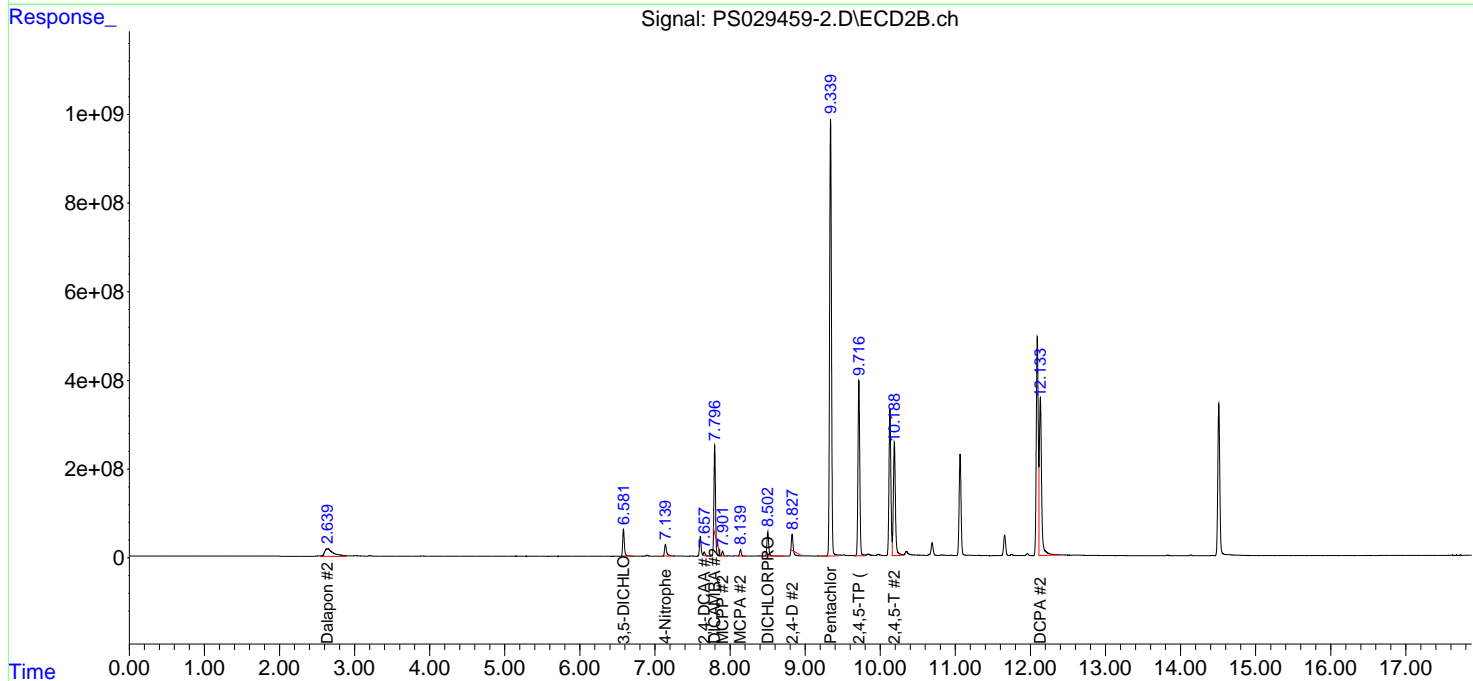
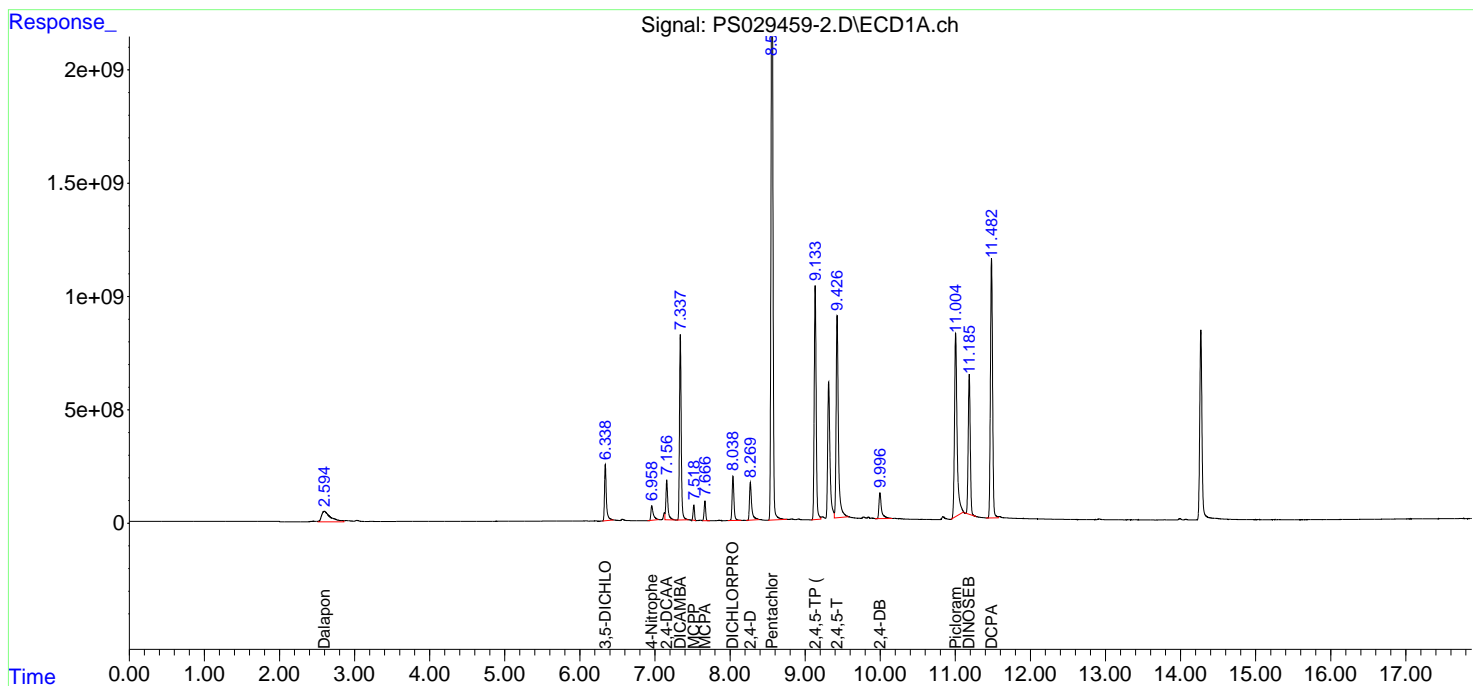
(f)=RT Delta > 1/2 Window (#)=Amounts differ by > 25% (m)=manual int.

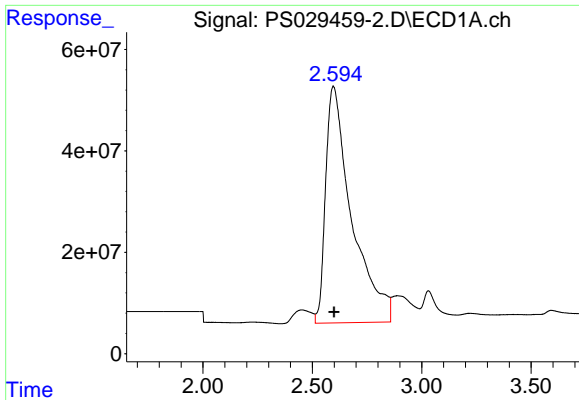
Data Path : Z:\pestpcbsrv\HPCHEM1\ECD_S\Data\PS031925\
 Data File : PS029459-2.D
 Signal(s) : Signal #1: ECD1A.ch Signal #2: ECD2B.ch
 Acq On : 19 Mar 2025 20:45
 Operator : AR\AJ
 Sample : HSTDCCC750
 Misc :
 ALS Vial : 3 Sample Multiplier: 1

Instrument :
 ECD_S
 ClientSampleId :

Integration File signal 1: autoint1.e
 Integration File signal 2: autoint2.e
 Quant Time: Mar 20 01:40:10 2025
 Quant Method : Z:\pestpcbsrv\HPCHEM1\ECD_S\Method\PS022125.M
 Quant Title : 8080.M
 QLast Update : Sat Feb 22 01:02:20 2025
 Response via : Initial Calibration
 Integrator: ChemStation

Volume Inj. : 1 µl
 Signal #1 Phase : ZB-MR1 Signal #2 Phase: ZB-MR2
 Signal #1 Info : 30M x 0.32mm x0.5 Signal #2 Info : 30M x 0.32mm x 0.25µm

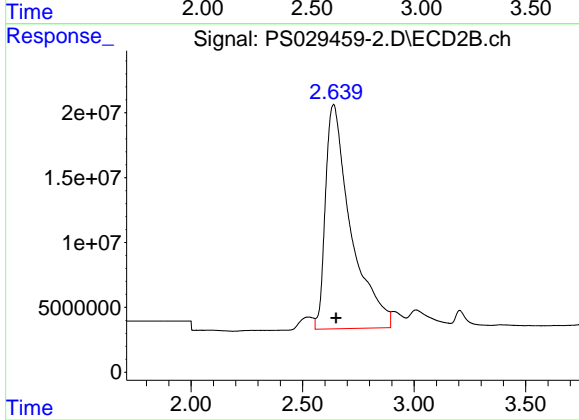




#1 Dalapon

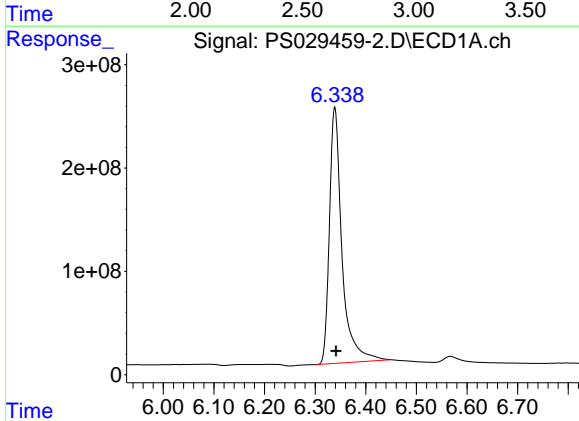
R.T.: 2.595 min
 Delta R.T.: -0.005 min
 Response: 3861106918
 Conc: 699.44 ng/ml

Instrument :
 ECD_S
 ClientSampleId :



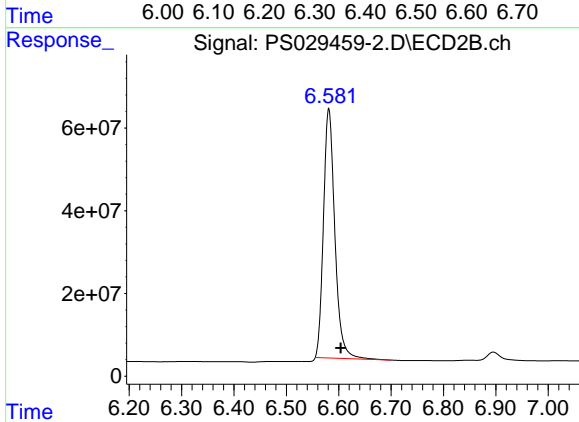
#1 Dalapon

R.T.: 2.639 min
 Delta R.T.: -0.012 min
 Response: 1366258920
 Conc: 645.34 ng/ml



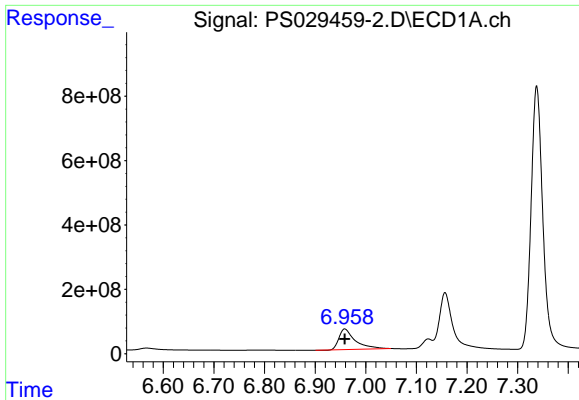
#2 3,5-DICHLOROBENZOIC ACID

R.T.: 6.339 min
 Delta R.T.: -0.003 min
 Response: 4269671339
 Conc: 729.72 ng/ml



#2 3,5-DICHLOROBENZOIC ACID

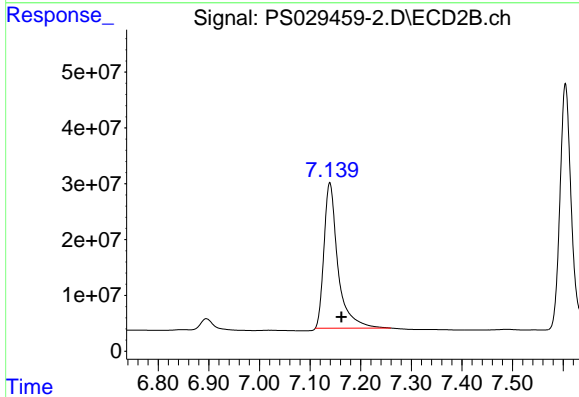
R.T.: 6.581 min
 Delta R.T.: -0.023 min
 Response: 908801976
 Conc: 641.76 ng/ml



#3 4-Nitrophenol

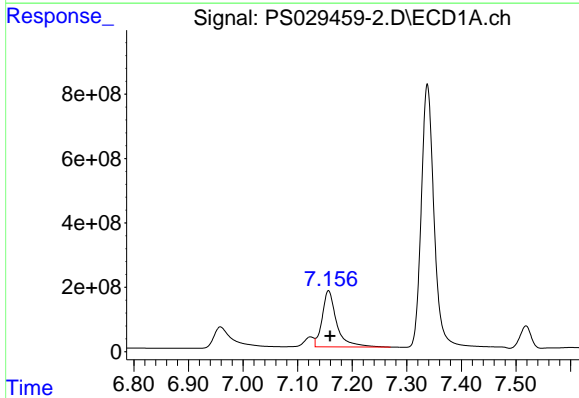
R.T.: 6.958 min
 Delta R.T.: 0.000 min
 Response: 1425567579
 Conc: 609.17 ng/ml

Instrument :
 ECD_S
 ClientSampleId :



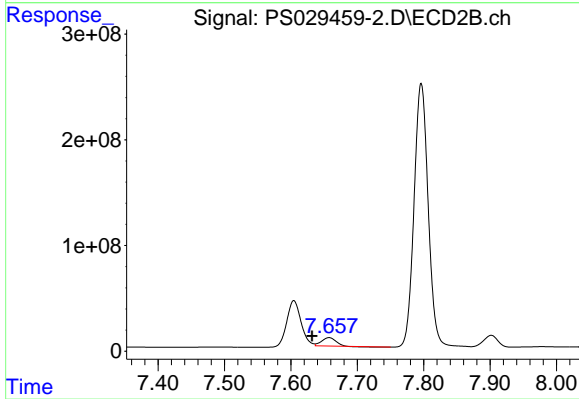
#3 4-Nitrophenol

R.T.: 7.139 min
 Delta R.T.: -0.023 min
 Response: 498291112
 Conc: 624.78 ng/ml



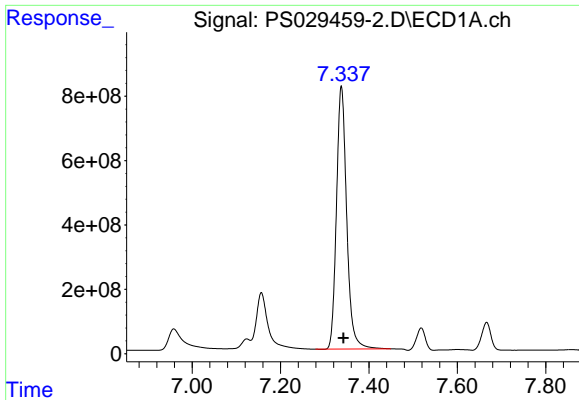
#4 2,4-DCAA

R.T.: 7.157 min
 Delta R.T.: -0.003 min
 Response: 3204320040
 Conc: 777.64 ng/ml



#4 2,4-DCAA

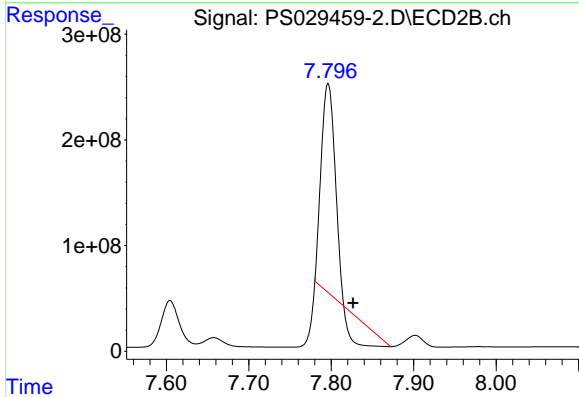
R.T.: 7.657 min
 Delta R.T.: 0.025 min
 Response: 114647841
 Conc: 121.92 ng/ml



#5 DICAMBA

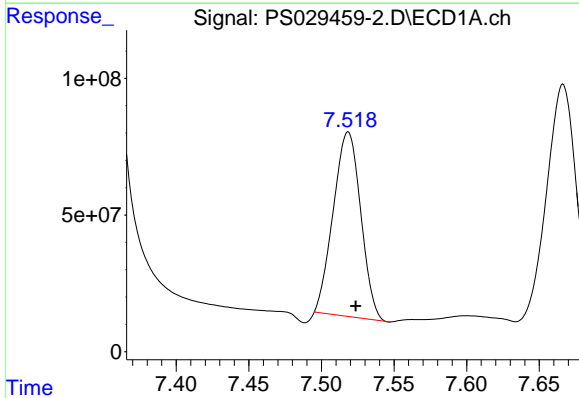
R.T.: 7.338 min
 Delta R.T.: -0.005 min
 Response: 13123935613
 Conc: 755.73 ng/ml

Instrument :
 ECD_S
 ClientSampleId :



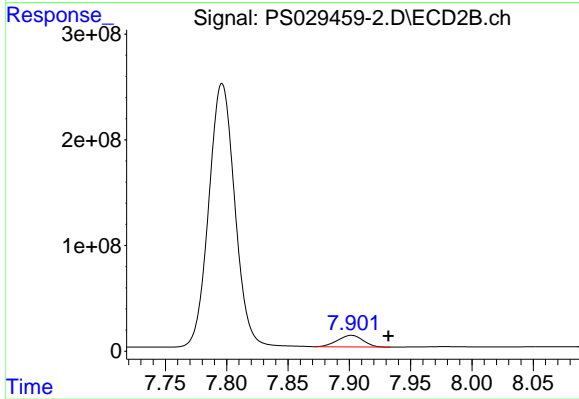
#5 DICAMBA

R.T.: 7.796 min
 Delta R.T.: -0.030 min
 Response: 1804232690
 Conc: 350.13 ng/ml



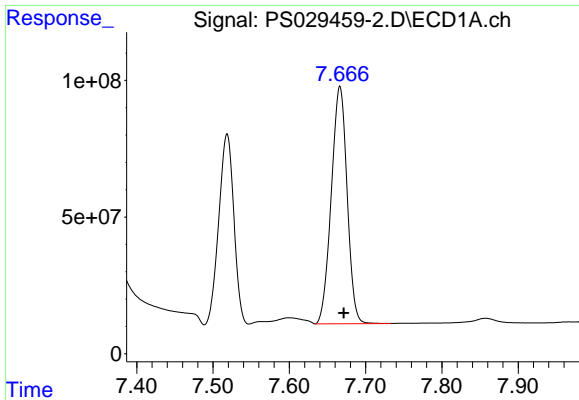
#6 MCP

R.T.: 7.518 min
 Delta R.T.: -0.005 min
 Response: 888091898
 Conc: 72.05 ug/ml



#6 MCP

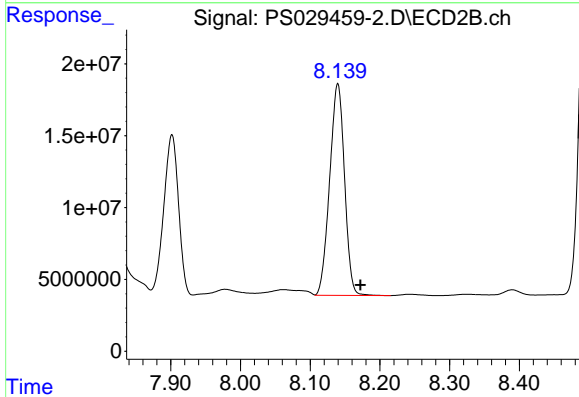
R.T.: 7.902 min
 Delta R.T.: -0.030 min
 Response: 157290492
 Conc: 67.24 ug/ml



#7 MCPA

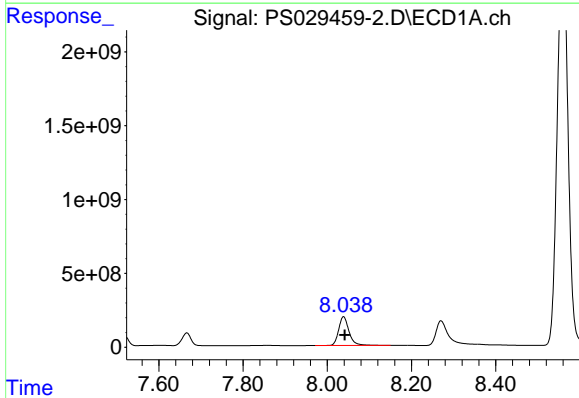
R.T.: 7.666 min
 Delta R.T.: -0.005 min
 Response: 1247102606
 Conc: 73.60 ug/ml

Instrument :
 ECD_S
 ClientSampleId :



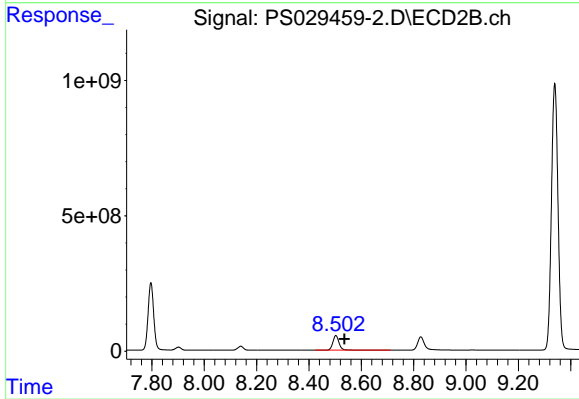
#7 MCPA

R.T.: 8.140 min
 Delta R.T.: -0.032 min
 Response: 218157642
 Conc: 68.39 ug/ml



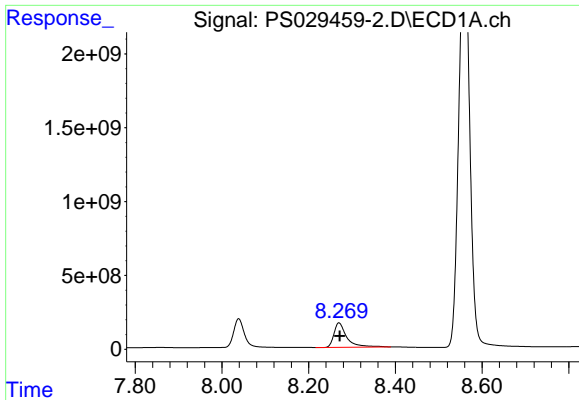
#8 DICHLORPROP

R.T.: 8.039 min
 Delta R.T.: -0.003 min
 Response: 3349742784
 Conc: 728.77 ng/ml



#8 DICHLORPROP

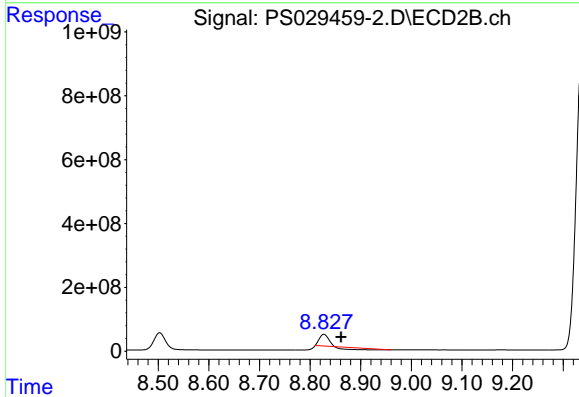
R.T.: 8.503 min
 Delta R.T.: -0.033 min
 Response: 884308366
 Conc: 691.54 ng/ml



#9 2,4-D

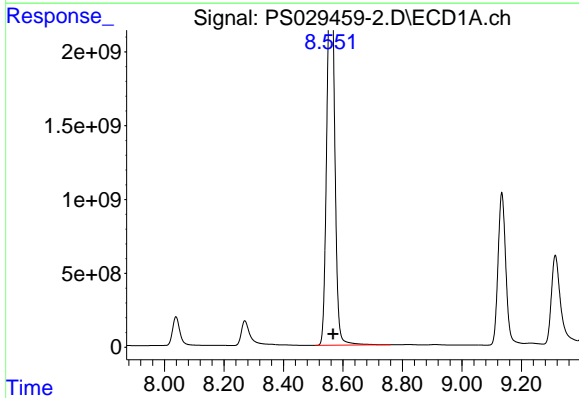
R.T.: 8.270 min
 Delta R.T.: -0.002 min
 Response: 3416108506
 Conc: 719.12 ng/ml

Instrument :
 ECD_S
 ClientSampleId :



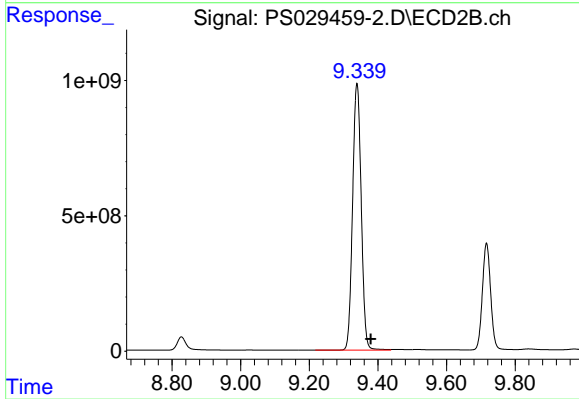
#9 2,4-D

R.T.: 8.827 min
 Delta R.T.: -0.034 min
 Response: 200502586
 Conc: 157.89 ng/ml



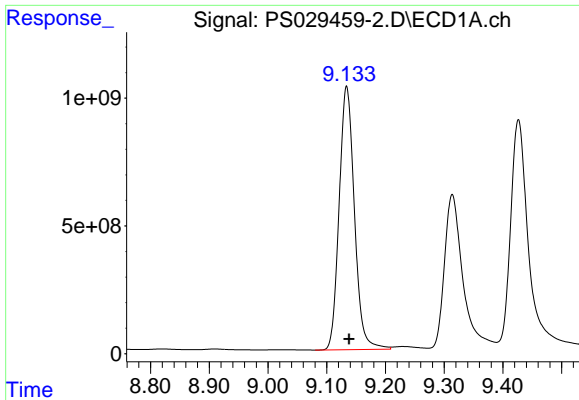
#10 Pentachlorophenol

R.T.: 8.563 min
 Delta R.T.: -0.004 min
 Response: 44651371668
 Conc: 765.15 ng/ml



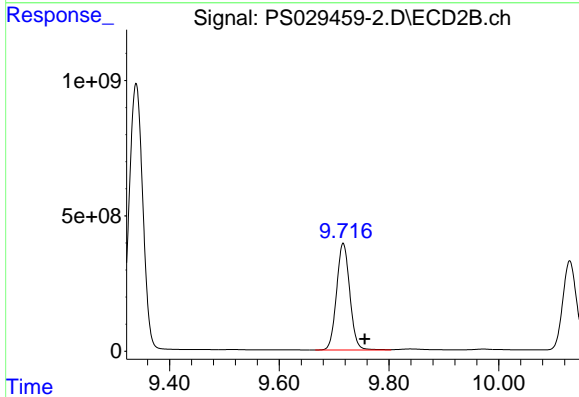
#10 Pentachlorophenol

R.T.: 9.339 min
 Delta R.T.: -0.040 min
 Response: 17157787332
 Conc: 745.58 ng/ml

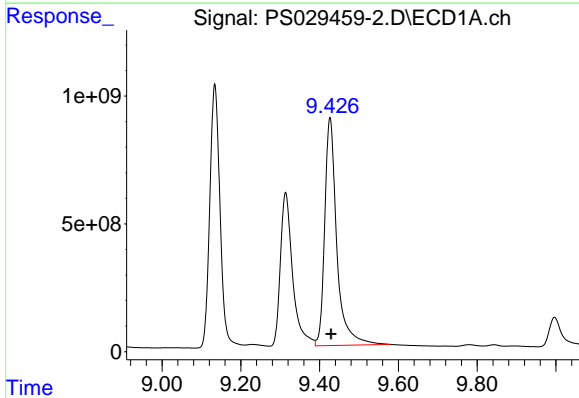


#11 2,4,5-TP (SILVEX)
 R.T.: 9.134 min
 Delta R.T.: -0.004 min
 Response: 18608390292
 Conc: 756.84 ng/ml

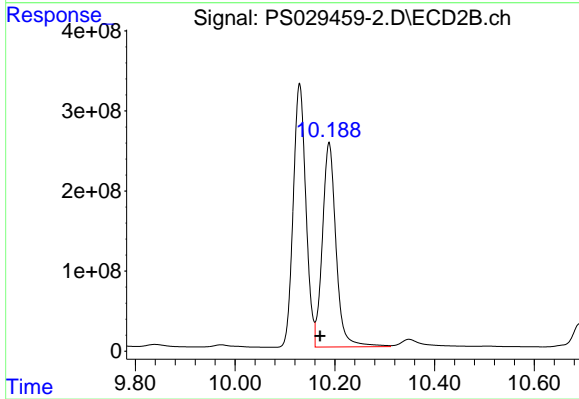
Instrument :
 ECD_S
 ClientSampleId :



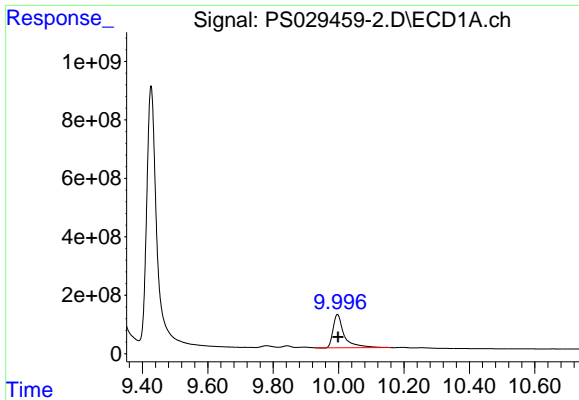
#11 2,4,5-TP (SILVEX)
 R.T.: 9.717 min
 Delta R.T.: -0.039 min
 Response: 6613808848
 Conc: 731.88 ng/ml



#12 2,4,5-T
 R.T.: 9.427 min
 Delta R.T.: -0.003 min
 Response: 19023350439
 Conc: 746.34 ng/ml



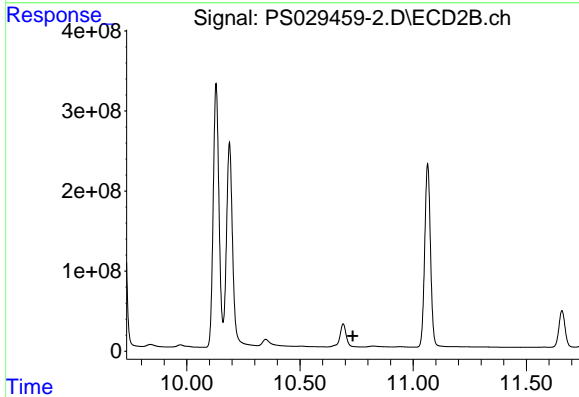
#12 2,4,5-T
 R.T.: 10.189 min
 Delta R.T.: 0.018 min
 Response: 4847082862
 Conc: 590.37 ng/ml



#13 2,4-DB

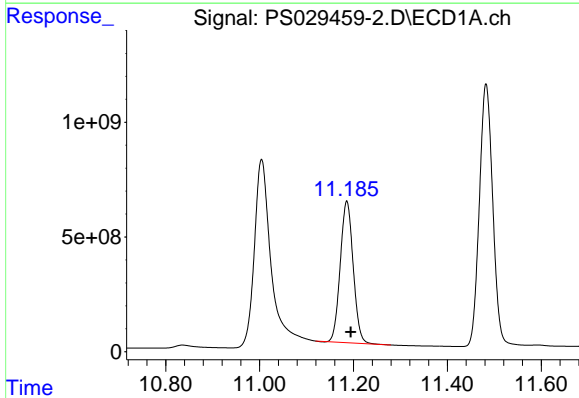
R.T.: 9.996 min
 Delta R.T.: -0.002 min
 Response: 2675600687
 Conc: 640.80 ng/ml

Instrument :
 ECD_S
 ClientSampleId :



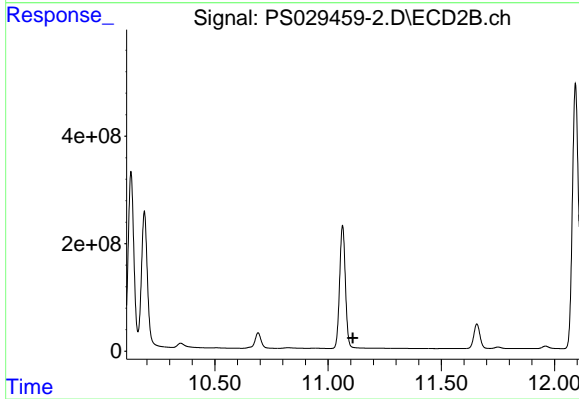
#13 2,4-DB

R.T.: 0.000 min
 Exp R.T. : 10.734 min
 Response: 0
 Conc: N.D.



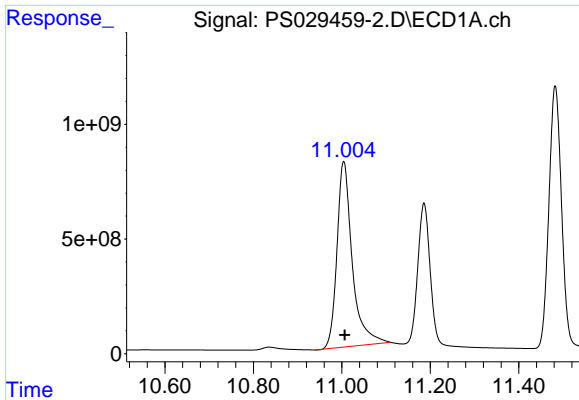
#14 DINOSEB

R.T.: 11.186 min
 Delta R.T.: -0.009 min
 Response: 11776274995
 Conc: 708.10 ng/ml



#14 DINOSEB

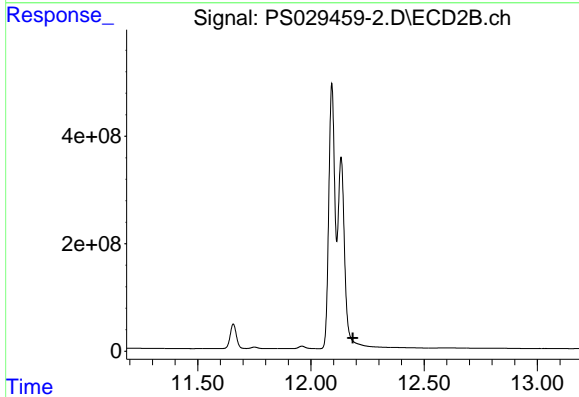
R.T.: 0.000 min
 Exp R.T. : 11.109 min
 Response: 0
 Conc: N.D.



#15 Picloram

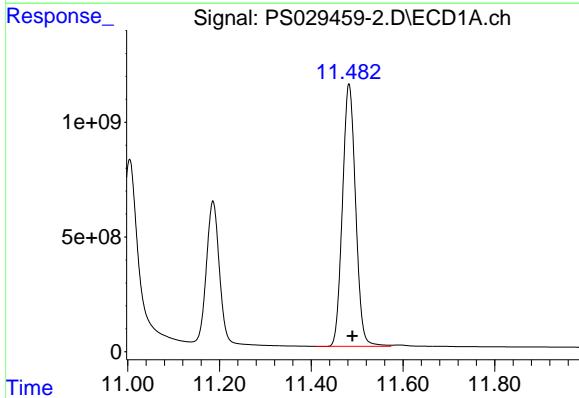
R.T.: 11.004 min
 Delta R.T.: -0.003 min
 Response: 19395311625
 Conc: 635.01 ng/ml

Instrument :
 ECD_S
 ClientSampleId :



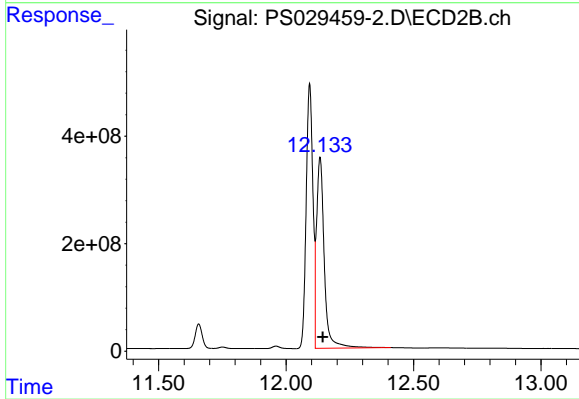
#15 Picloram

R.T.: 0.000 min
 Exp R.T. : 12.185 min
 Response: 0
 Conc: N.D.



#16 DCPA

R.T.: 11.482 min
 Delta R.T.: -0.008 min
 Response: 22744758842
 Conc: 758.07 ng/ml



#16 DCPA

R.T.: 12.133 min
 Delta R.T.: -0.011 min
 Response: 7466508065
 Conc: 630.80 ng/ml