

Data Path : Z:\pestpcbsrv\HPCHEM1\ECD\_S\Data\PS032019\  
 Data File : PS003647.D  
 Signal(s) : Signal #1: ECD1A.ch Signal #2: ECD2B.ch  
 Acq On : 21 Mar 2019 04:35  
 Operator : EI\SJ  
 Sample : I.BLK  
 Misc :  
 ALS Vial : 2 Sample Multiplier: 1

Instrument :  
 ECD\_S  
 ClientSampleId :

Integration File signal 1: autoint1.e  
 Integration File signal 2: autoint2.e  
 Quant Time: Mar 21 13:50:43 2019  
 Quant Method : Z:\pestpcbsrv\HPCHEM1\ECD\_S\Method\PS022719.M  
 Quant Title : 8080.M  
 QLast Update : Thu Feb 28 03:00:19 2019  
 Response via : Initial Calibration  
 Integrator: ChemStation

Volume Inj. : 2 µl  
 Signal #1 Phase : Rtx-CLPesticides Signal #2 Phase: Rtx-CLPesticides2  
 Signal #1 Info : 30M x 0.32mm x0.5 Signal #2 Info : 30M x 0.32mm x 0.25µm

Compound	RT#1	RT#2	Resp#1	Resp#2	ng/ml	ng/ml
-----						
System Monitoring Compounds						
4) S 2,4-DCAA	11.315	10.748	263.5E6	73310	600.261	0.156 #
Target Compounds						
1) T Dalapon	0.000	2.258	0	48530	N.D.	0.077 #
3) T 4-Nitroph...	0.000	9.992	0	165440	N.D.	0.736 #
7) T MCPA	0.000	11.705	0	617385	N.D.	0.358 #
8) T DICHLORPROP	0.000	12.218	0	732568	N.D.	1.773 #
9) T 2,4-D	13.081	12.721	699100	67414	1.507	0.128 #
10) T Pentachlo...	0.000	13.232	0	1209316	N.D.	0.184 #
11) T 2,4,5-TP ...	0.000	13.798	0	18810	N.D.	0.007 #
12) T 2,4,5-T	0.000	14.379	0	164273	N.D.	0.081 #
13) T 2,4-DB	0.000	15.068	0	269618	N.D.	1.056 #
14) T DINOSEB	0.000	15.501	0	1193870	N.D.	0.669 #
15) T Picloram	0.000	16.660	0	704347	N.D.	0.278 #
16) T DCPA	0.000	16.660	0	704347	N.D.	0.226 #

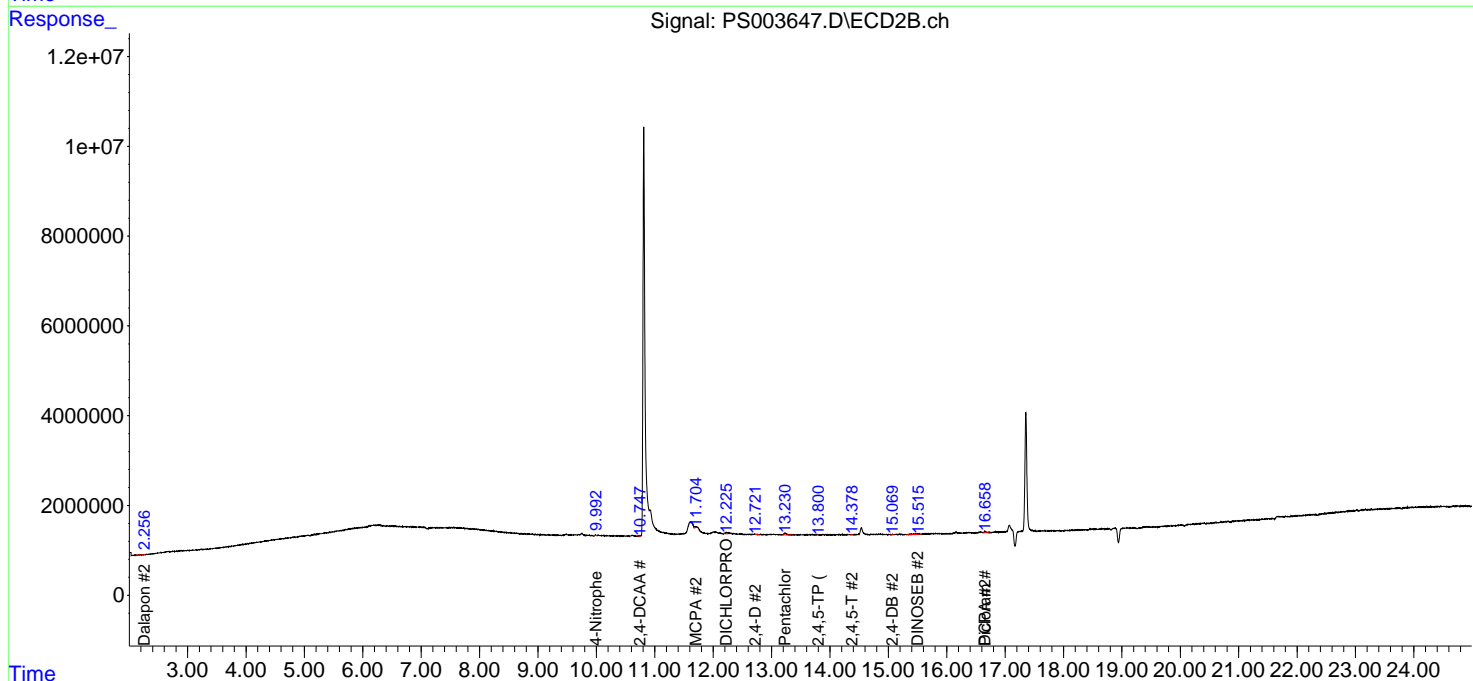
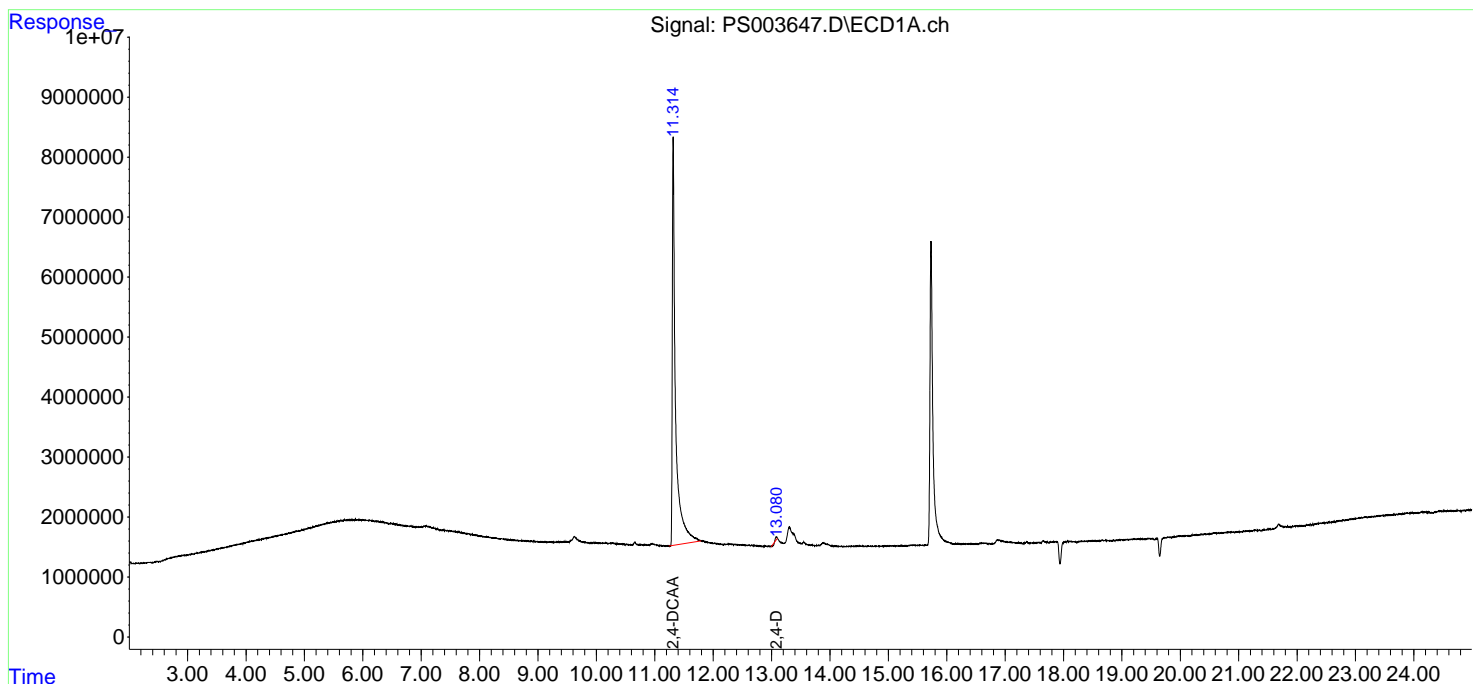
(f)=RT Delta > 1/2 Window (#)=Amounts differ by > 25% (m)=manual int.

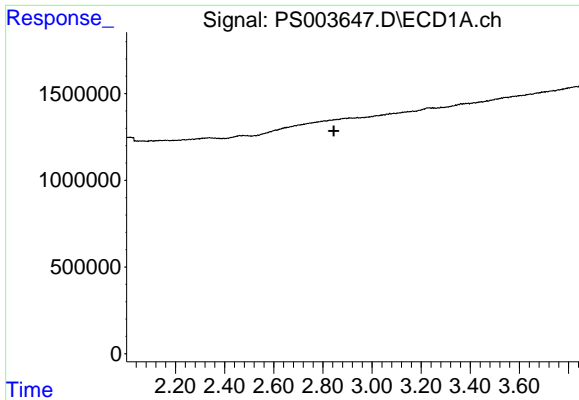
Data Path : Z:\pestpcbsrv\HPCHEM1\ECD\_S\Data\PS032019\  
 Data File : PS003647.D  
 Signal(s) : Signal #1: ECD1A.ch Signal #2: ECD2B.ch  
 Acq On : 21 Mar 2019 04:35  
 Operator : EI\SJ  
 Sample : I.BLK  
 Misc :  
 ALS Vial : 2 Sample Multiplier: 1

Instrument :  
 ECD\_S  
 ClientSampled :

Integration File signal 1: autoint1.e  
 Integration File signal 2: autoint2.e  
 Quant Time: Mar 21 13:50:43 2019  
 Quant Method : Z:\pestpcbsrv\HPCHEM1\ECD\_S\Method\PS022719.M  
 Quant Title : 8080.M  
 QLast Update : Thu Feb 28 03:00:19 2019  
 Response via : Initial Calibration  
 Integrator: ChemStation

Volume Inj. : 2 µl  
 Signal #1 Phase : Rtx-CLPesticides Signal #2 Phase: Rtx-CLPesticides2  
 Signal #1 Info : 30M x 0.32mm x 0.5 Signal #2 Info : 30M x 0.32mm x 0.25µm

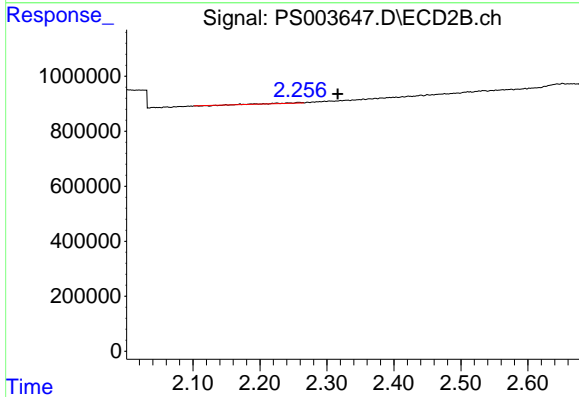




#1 Dalapon

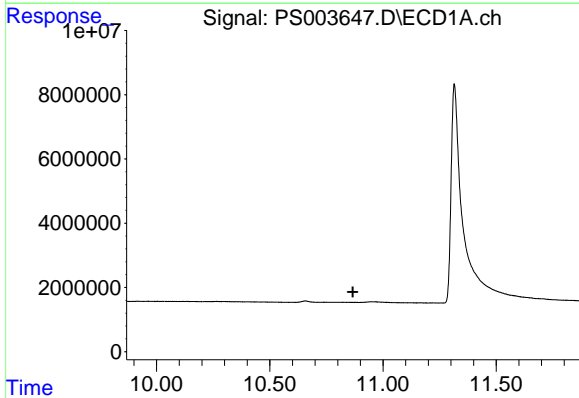
R.T.: 0.000 min  
 Exp R.T. : 2.844 min  
 Response: 0  
 Conc: N.D.

Instrument :  
 ECD\_S  
 ClientSampleId :



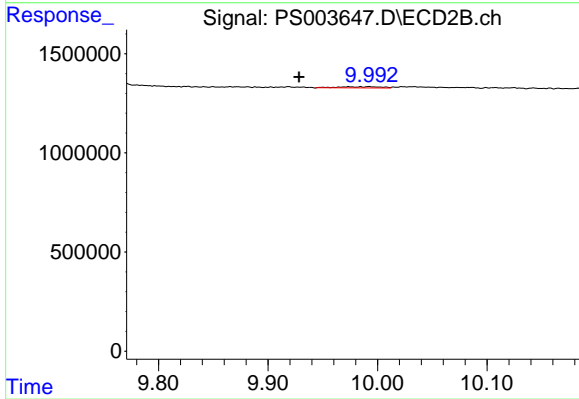
#1 Dalapon

R.T.: 2.258 min  
 Delta R.T.: -0.058 min  
 Response: 48530  
 Conc: 0.08 ng/ml



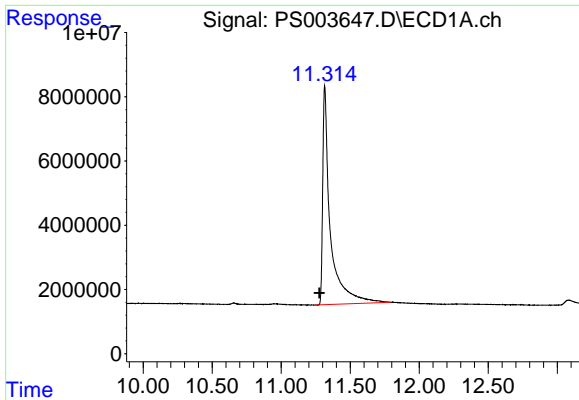
#3 4-Nitrophenol

R.T.: 0.000 min  
 Exp R.T. : 10.867 min  
 Response: 0  
 Conc: N.D.



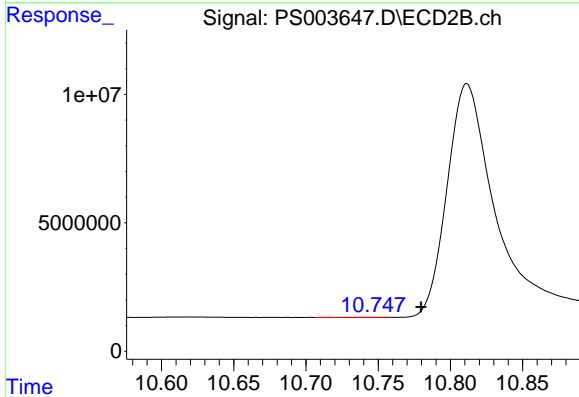
#3 4-Nitrophenol

R.T.: 9.992 min  
 Delta R.T.: 0.064 min  
 Response: 165440  
 Conc: 0.74 ng/ml

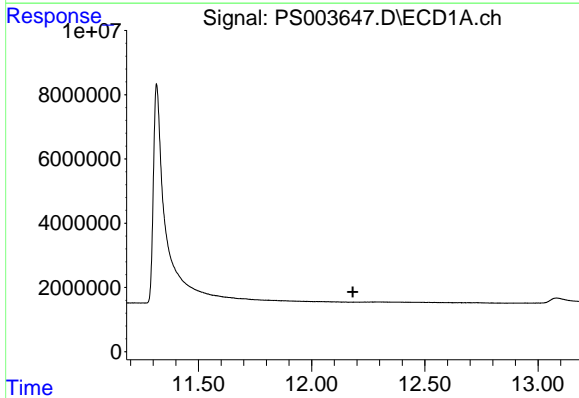


#4 2,4-DCAA  
 R.T.: 11.315 min  
 Delta R.T.: 0.038 min  
 Response: 263529391  
 Conc: 600.26 ng/ml

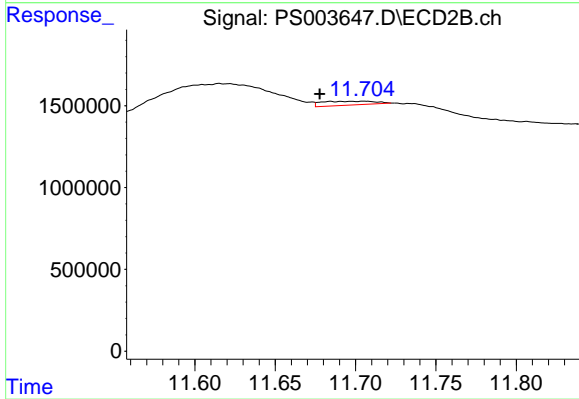
Instrument :  
 ECD\_S  
 ClientSampled :



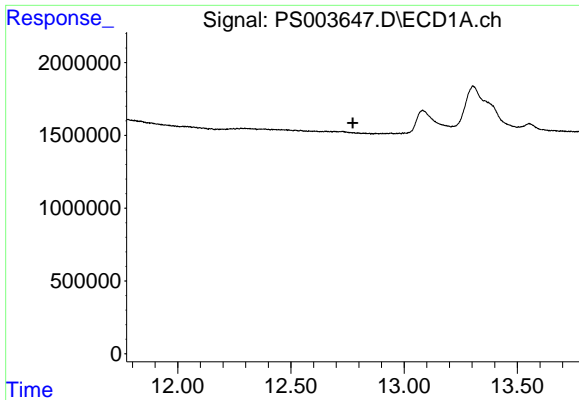
#4 2,4-DCAA  
 R.T.: 10.748 min  
 Delta R.T.: -0.031 min  
 Response: 73310  
 Conc: 0.16 ng/ml



#7 MCPA  
 R.T.: 0.000 min  
 Exp R.T. : 12.182 min  
 Response: 0  
 Conc: N.D.



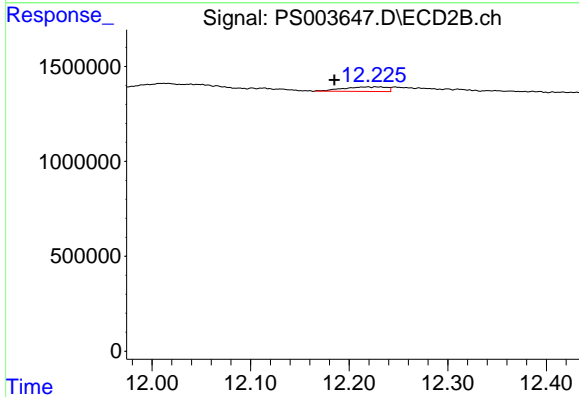
#7 MCPA  
 R.T.: 11.705 min  
 Delta R.T.: 0.027 min  
 Response: 617385  
 Conc: 0.36 ug/ml



#8 DICHLORPROP

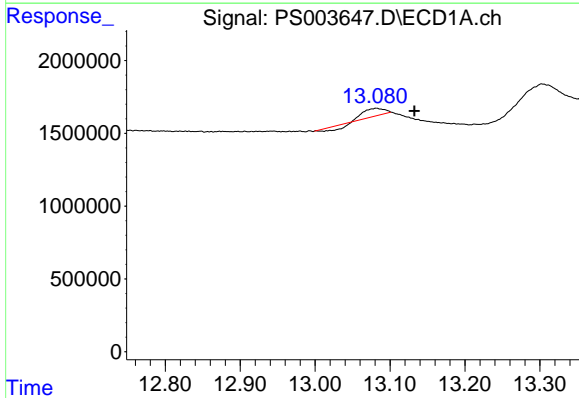
R.T.: 0.000 min  
 Exp R.T.: 12.773 min  
 Response: 0  
 Conc: N.D.

Instrument :  
 ECD\_S  
 ClientSampled :



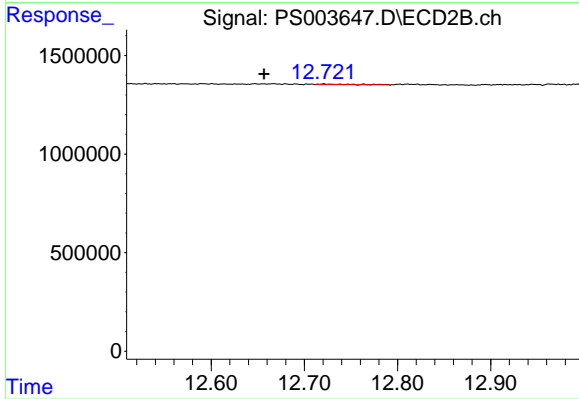
#8 DICHLORPROP

R.T.: 12.218 min  
 Delta R.T.: 0.033 min  
 Response: 732568  
 Conc: 1.77 ng/ml



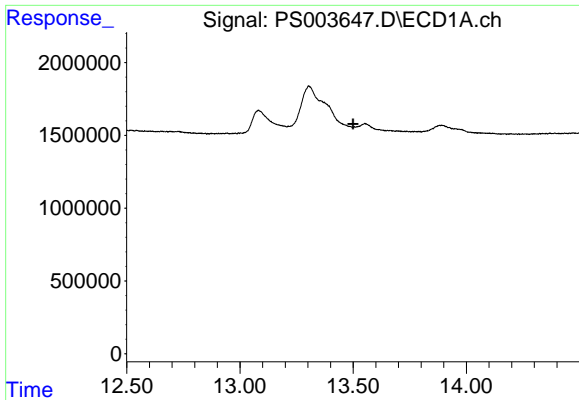
#9 2,4-D

R.T.: 13.081 min  
 Delta R.T.: -0.051 min  
 Response: 699100  
 Conc: 1.51 ng/ml



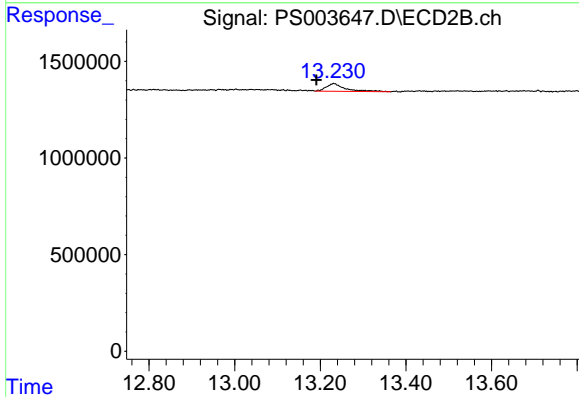
#9 2,4-D

R.T.: 12.721 min  
 Delta R.T.: 0.064 min  
 Response: 67414  
 Conc: 0.13 ng/ml

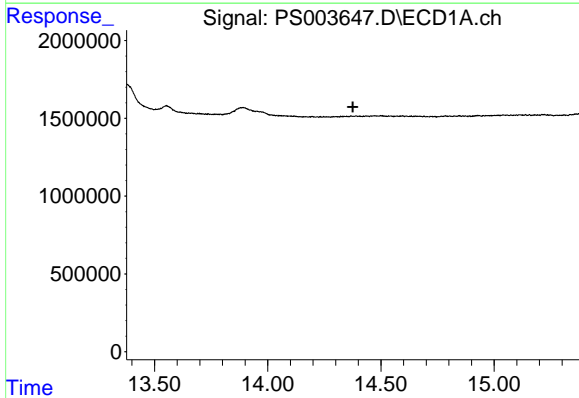


#10 Pentachlorophenol  
 R.T.: 0.000 min  
 Exp R.T. : 13.499 min  
 Response: 0  
 Conc: N.D.

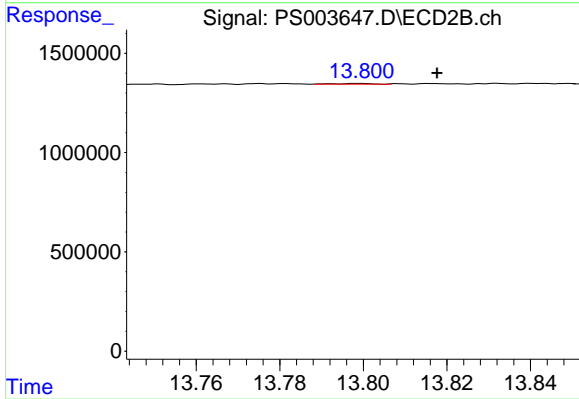
Instrument :  
 ECD\_S  
 ClientSampleId :



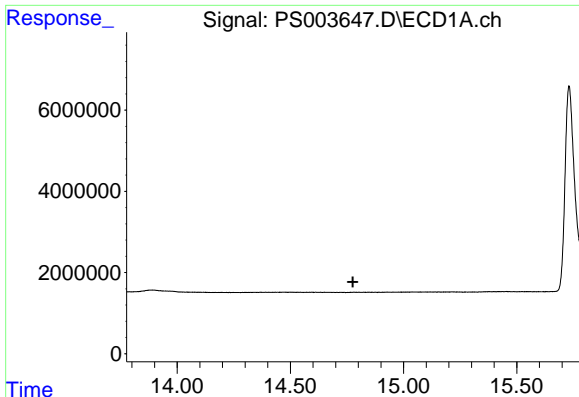
#10 Pentachlorophenol  
 R.T.: 13.232 min  
 Delta R.T.: 0.040 min  
 Response: 1209316  
 Conc: 0.18 ng/ml



#11 2,4,5-TP (SILVEX)  
 R.T.: 0.000 min  
 Exp R.T. : 14.376 min  
 Response: 0  
 Conc: N.D.



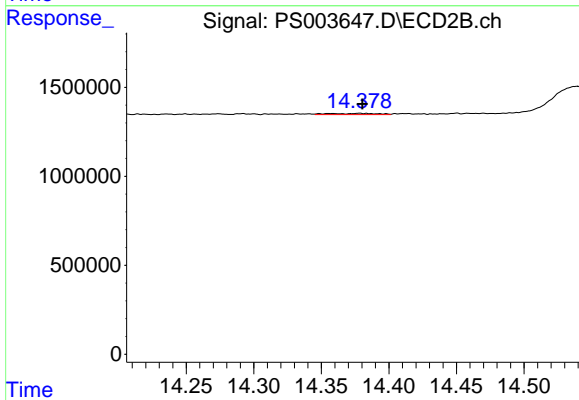
#11 2,4,5-TP (SILVEX)  
 R.T.: 13.798 min  
 Delta R.T.: -0.019 min  
 Response: 18810  
 Conc: 0.01 ng/ml



#12 2,4,5-T

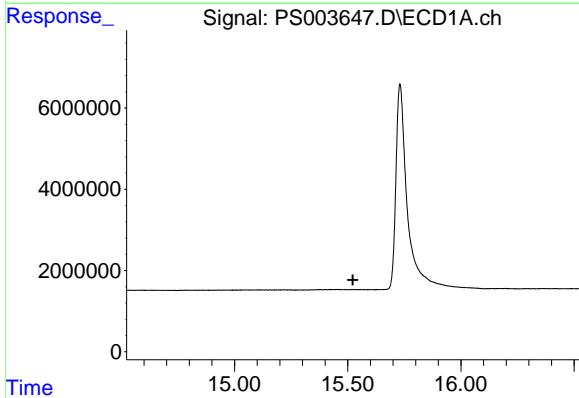
R.T.: 0.000 min  
 Exp R.T. : 14.776 min  
 Response: 0  
 Conc: N.D.

Instrument :  
 ECD\_S  
 ClientSampleId :



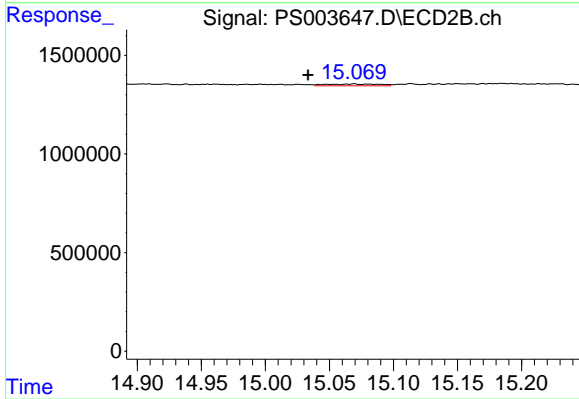
#12 2,4,5-T

R.T.: 14.379 min  
 Delta R.T.: -0.002 min  
 Response: 164273  
 Conc: 0.08 ng/ml



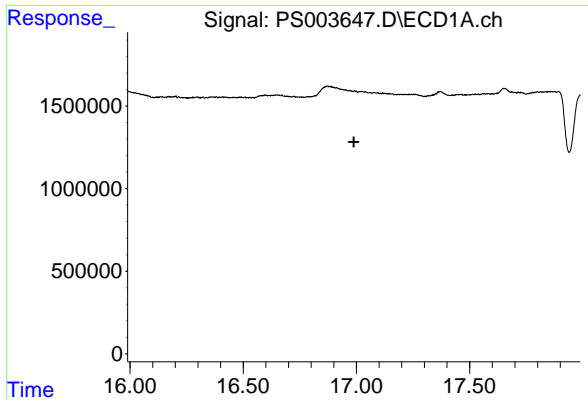
#13 2,4-DB

R.T.: 0.000 min  
 Exp R.T. : 15.523 min  
 Response: 0  
 Conc: N.D.



#13 2,4-DB

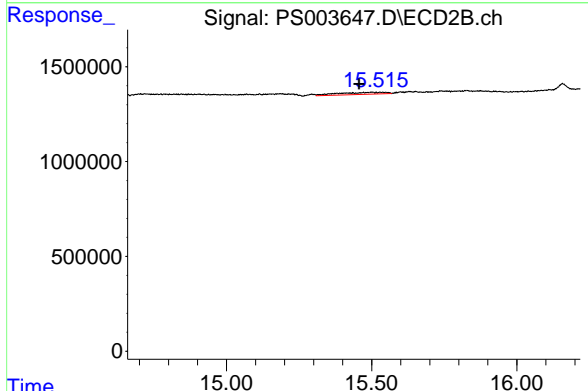
R.T.: 15.068 min  
 Delta R.T.: 0.035 min  
 Response: 269618  
 Conc: 1.06 ng/ml



#14 DINOSEB

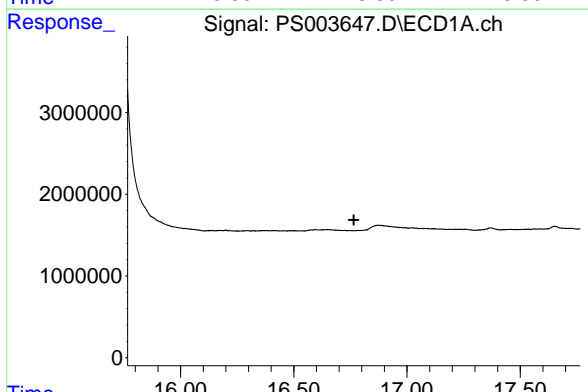
R.T.: 0.000 min  
 Exp R.T. : 16.989 min  
 Response: 0  
 Conc: N.D.

Instrument :  
 ECD\_S  
 ClientSampleId :



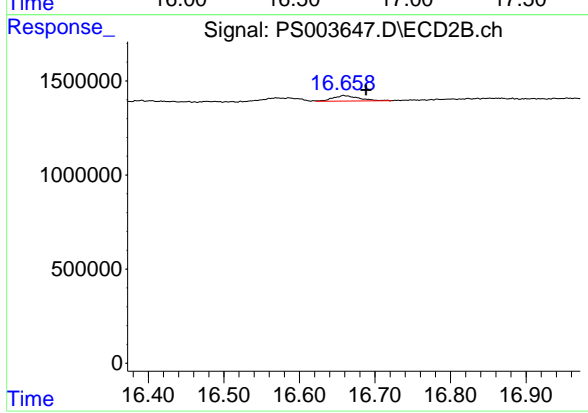
#14 DINOSEB

R.T.: 15.501 min  
 Delta R.T.: 0.044 min  
 Response: 1193870  
 Conc: 0.67 ng/ml



#15 Picloram

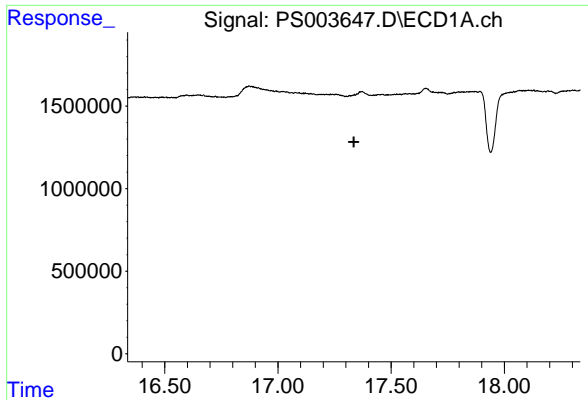
R.T.: 0.000 min  
 Exp R.T. : 16.765 min  
 Response: 0  
 Conc: N.D.



#15 Picloram

R.T.: 16.660 min  
 Delta R.T.: -0.029 min  
 Response: 704347  
 Conc: 0.28 ng/ml

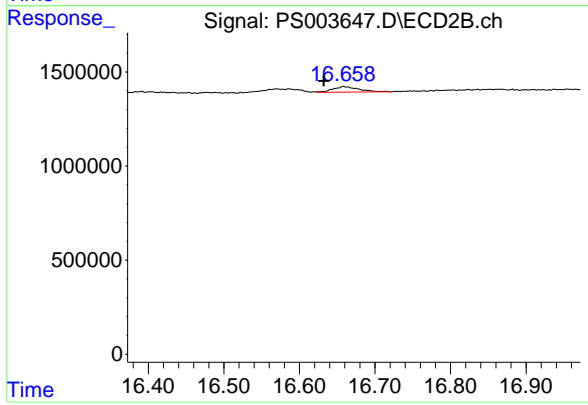




#16 DCPA

R.T.: 0.000 min  
Exp R.T.: 17.335 min  
Response: 0  
Conc: N.D.

Instrument :  
ECD\_S  
ClientSampleId :



#16 DCPA

R.T.: 16.660 min  
Delta R.T.: 0.028 min  
Response: 704347  
Conc: 0.23 ng/ml