

Data Path : Z:\pestpcbsrv\HPCHEM1\ECD\_S\Data\PS032124\  
 Data File : PS026233.D  
 Signal(s) : Signal #1: ECD1A.ch Signal #2: ECD2B.ch  
 Acq On : 21 Mar 2024 22:50  
 Operator : AR\AJ  
 Sample : PB159648TB  
 Misc :  
 ALS Vial : 17 Sample Multiplier: 1

Instrument :  
 ECD\_S  
 ClientSampleId :  
 PB159648TB

Integration File signal 1: autoint1.e  
 Integration File signal 2: autoint2.e  
 Quant Time: Mar 22 05:01:38 2024  
 Quant Method : Z:\pestpcbsrv\HPCHEM1\ECD\_S\Method\PS031924.M  
 Quant Title : 8080.M  
 QLast Update : Tue Mar 19 15:58:33 2024  
 Response via : Initial Calibration  
 Integrator: ChemStation

Volume Inj. : 2 µl  
 Signal #1 Phase : Rtx-CLPesticides Signal #2 Phase: Rtx-CLPesticides2  
 Signal #1 Info : 30M x 0.32mm x0.5 Signal #2 Info : 30M x 0.32mm x 0.25µm

	Compound	RT#1	RT#2	Resp#1	Resp#2	ng/ml	ng/ml
-----							
System Monitoring Compounds							
4) S	2,4-DCAA	7.187	7.705	2606.5E6	781.8E6	811.803	830.897
Target Compounds							
1) T	Dalapon	2.601	2.657	375.4E6	172.6E6	72.587	90.830 #
2) T	3,5-DICHL...	6.391	6.696	1946031	19015788	<MDL	13.198 #
3) T	4-Nitroph...	7.039f	7.284	40854054	3409901	23.424	7.205 #
5) T	DICAMBA	7.369	7.891	4962285	3140245	<MDL	<MDL #
6) T	MCP P	7.545	7.999	3253722	6301027	<MDL	1.973 #
7) T	MCPA	7.704	8.215f	6183421	1811897	<MDL	<MDL #
8) T	DICHLORPROP	8.109	8.653	20750329	41801377	5.909	38.597 #
9) T	2,4-D	8.278	8.943	210041	5177277	<MDL	5.028 #
10) T	Pentachlo...	8.654	9.488	4404235	5004489	<MDL	<MDL #
11) T	2,4,5-TP ...	9.186	9.865	103.4E6	111.8E6	5.431	18.427 #
12) T	2,4,5-T	9.509	10.264	624.2E6	2108156	33.555	<MDL #
13) T	2,4-DB	10.071	10.831	394.8E6	52597589	157.811	87.349 #
15) T	Picloram	11.017f	12.277	193.6E6	75702925	8.491	12.427 #
16) T	DCPA	11.588	12.211	-41531058	17113496	N.D.	2.444

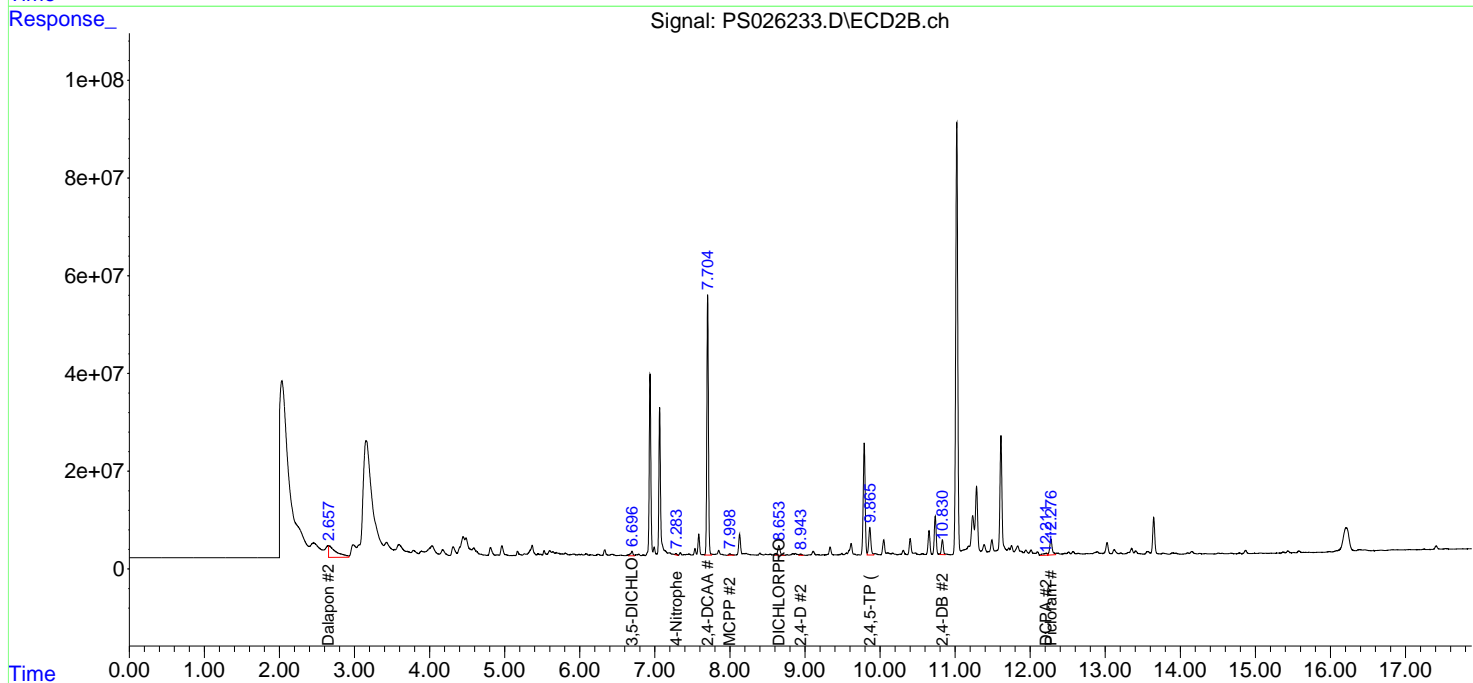
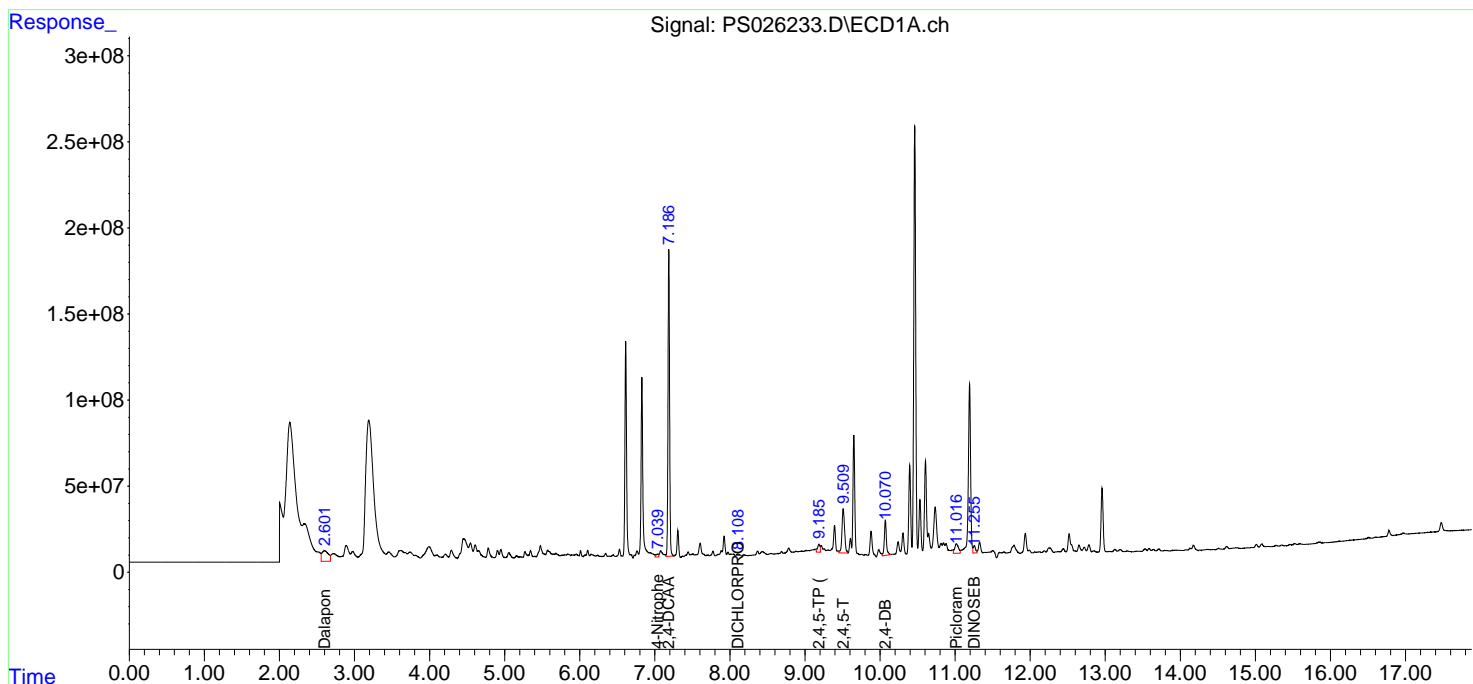
(f)=RT Delta > 1/2 Window (#)=Amounts differ by > 25% (m)=manual int.

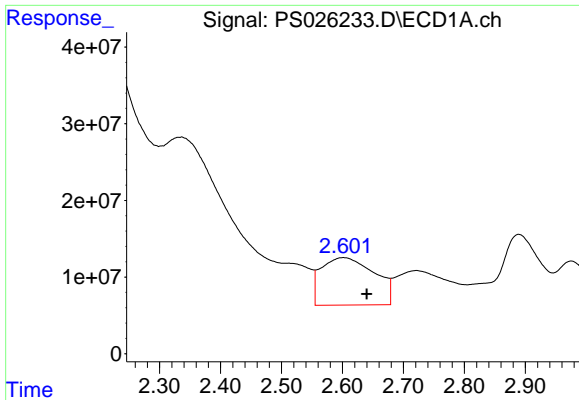
Data Path : Z:\pestpcbsrv\HPCHEM1\ECD\_S\Data\PS032124\  
 Data File : PS026233.D  
 Signal(s) : Signal #1: ECD1A.ch Signal #2: ECD2B.ch  
 Acq On : 21 Mar 2024 22:50  
 Operator : AR\AJ  
 Sample : PB159648TB  
 Misc :  
 ALS Vial : 17 Sample Multiplier: 1

Instrument :  
 ECD\_S  
 ClientSampleId :  
 PB159648TB

Integration File signal 1: autoint1.e  
 Integration File signal 2: autoint2.e  
 Quant Time: Mar 22 05:01:38 2024  
 Quant Method : Z:\pestpcbsrv\HPCHEM1\ECD\_S\Method\PS031924.M  
 Quant Title : 8080.M  
 QLast Update : Tue Mar 19 15:58:33 2024  
 Response via : Initial Calibration  
 Integrator: ChemStation

Volume Inj. : 2 µl  
 Signal #1 Phase : Rtx-CLPesticides Signal #2 Phase: Rtx-CLPesticides2  
 Signal #1 Info : 30M x 0.32mm x0.5 Signal #2 Info : 30M x 0.32mm x 0.25µm

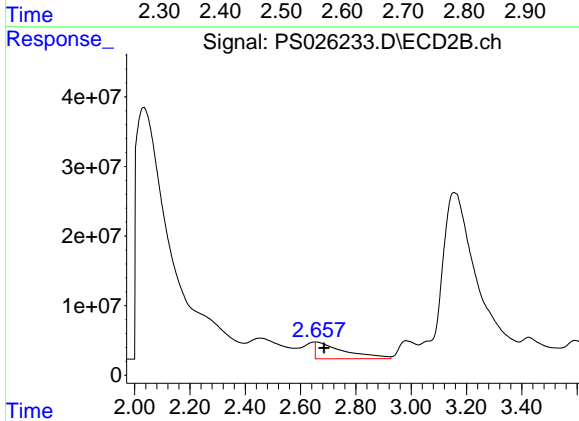




#1 Dalapon

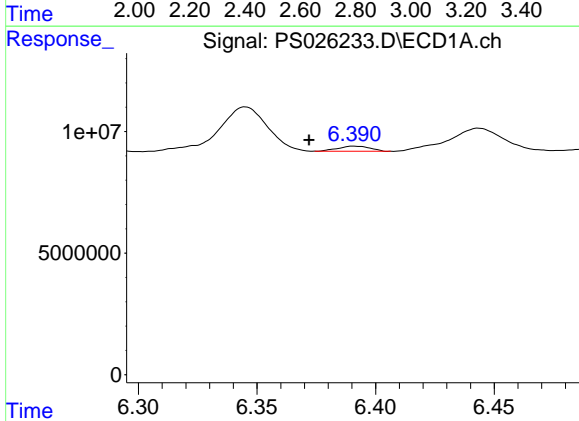
R.T.: 2.601 min  
 Delta R.T.: -0.039 min  
 Response: 375361068  
 Conc: 72.59 ng/ml

Instrument :  
 ECD\_S  
 ClientSampleId :  
 PB159648TB



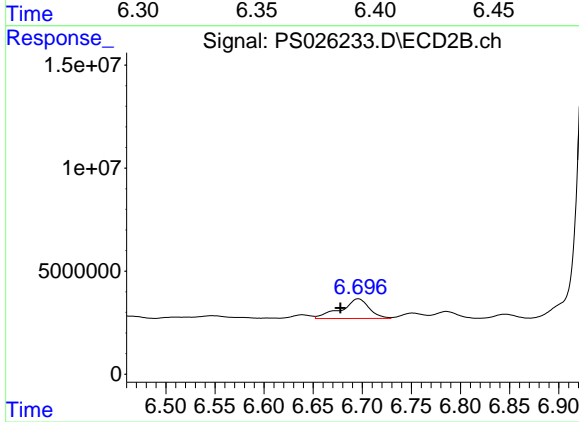
#1 Dalapon

R.T.: 2.657 min  
 Delta R.T.: -0.027 min  
 Response: 172646447  
 Conc: 90.83 ng/ml



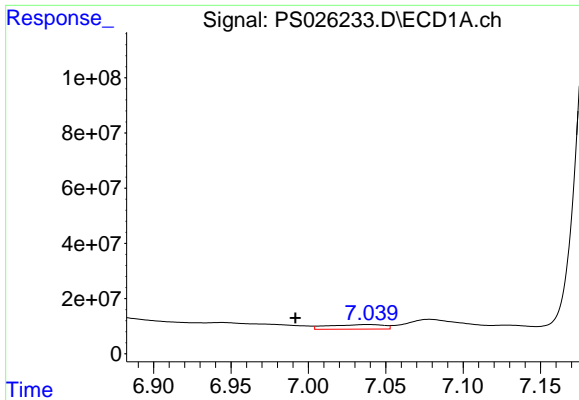
#2 3,5-DICHLOROBENZOIC ACID

R.T.: 6.391 min  
 Delta R.T.: 0.019 min  
 Response: 1946031  
 Conc: N.D.



#2 3,5-DICHLOROBENZOIC ACID

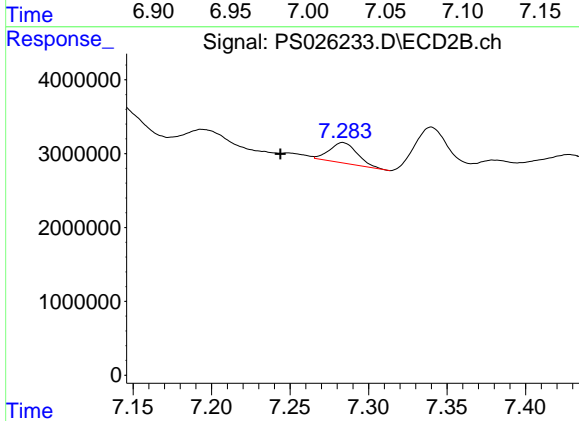
R.T.: 6.696 min  
 Delta R.T.: 0.018 min  
 Response: 19015788  
 Conc: 13.20 ng/ml



#3 4-Nitrophenol

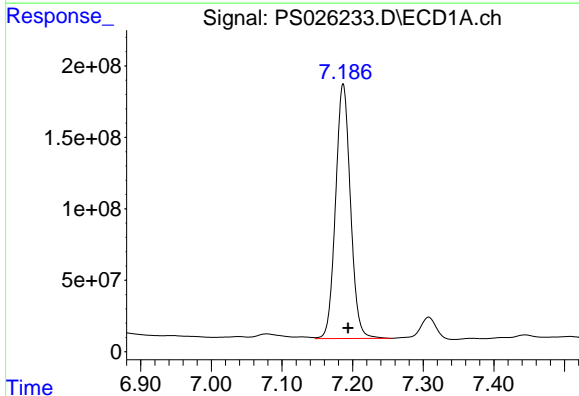
R.T.: 7.039 min  
 Delta R.T.: 0.047 min  
 Response: 40854054  
 Conc: 23.42 ng/ml

Instrument :  
 ECD\_S  
 ClientSampleId :  
 PB159648TB



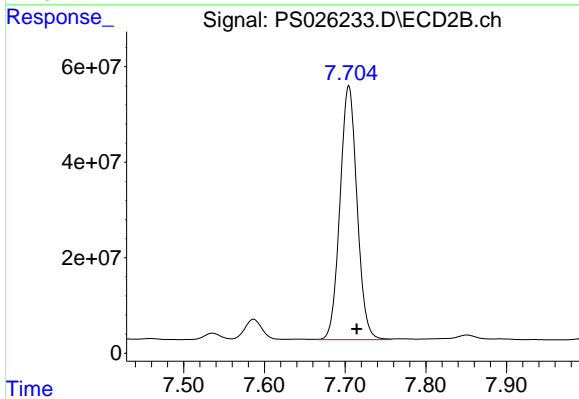
#3 4-Nitrophenol

R.T.: 7.284 min  
 Delta R.T.: 0.040 min  
 Response: 3409901  
 Conc: 7.20 ng/ml



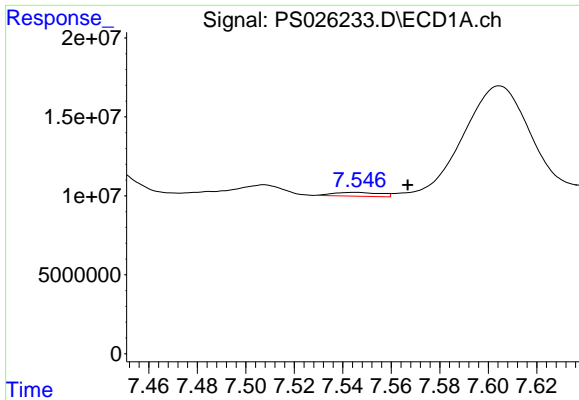
#4 2,4-DCAA

R.T.: 7.187 min  
 Delta R.T.: -0.007 min  
 Response: 2606497213  
 Conc: 811.80 ng/ml



#4 2,4-DCAA

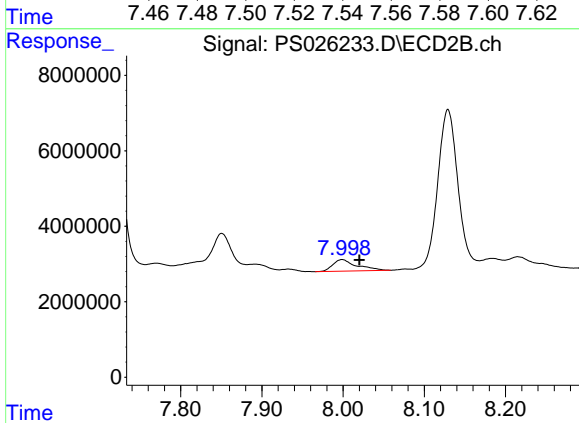
R.T.: 7.705 min  
 Delta R.T.: -0.010 min  
 Response: 781840966  
 Conc: 830.90 ng/ml



#6 MCPP

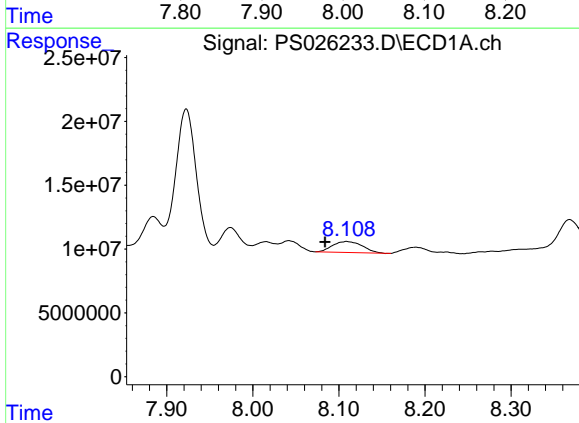
R.T.: 7.545 min  
 Delta R.T.: -0.021 min  
 Response: 3253722  
 Conc: N.D.

Instrument :  
 ECD\_S  
 ClientSampleId :  
 PB159648TB



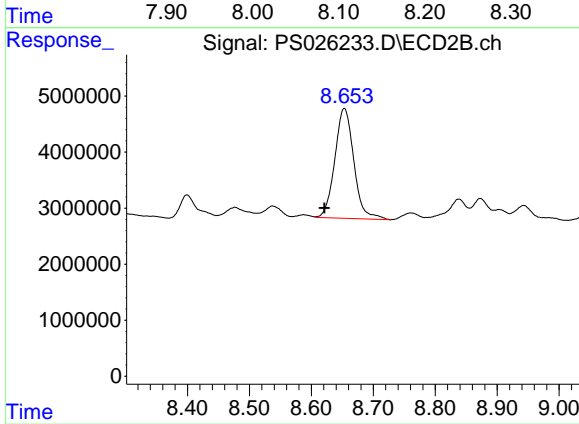
#6 MCPP

R.T.: 7.999 min  
 Delta R.T.: -0.021 min  
 Response: 6301027  
 Conc: 1.97 ug/ml



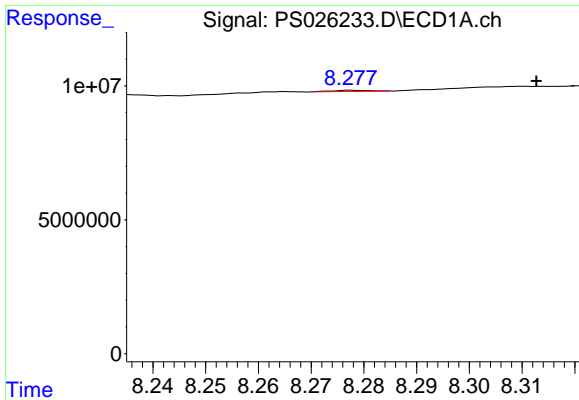
#8 DICHLORPROP

R.T.: 8.109 min  
 Delta R.T.: 0.025 min  
 Response: 20750329  
 Conc: 5.91 ng/ml



#8 DICHLORPROP

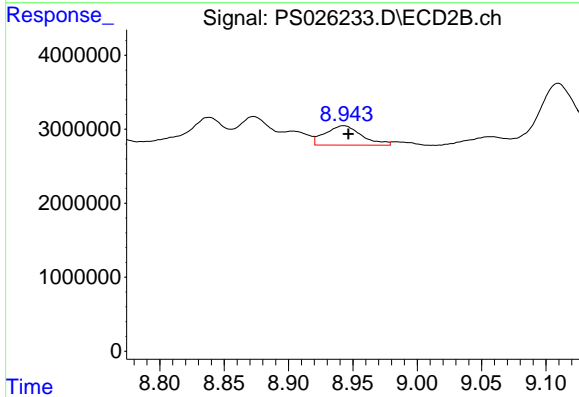
R.T.: 8.653 min  
 Delta R.T.: 0.032 min  
 Response: 41801377  
 Conc: 38.60 ng/ml



#9 2,4-D

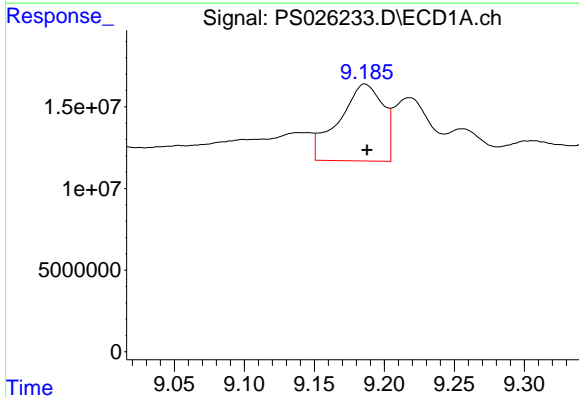
R.T.: 8.278 min  
 Delta R.T.: -0.035 min  
 Response: 210041  
 Conc: N.D.

Instrument :  
 ECD\_S  
 ClientSampleId :  
 PB159648TB



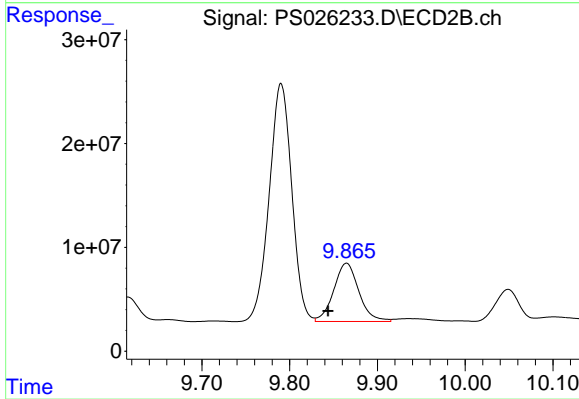
#9 2,4-D

R.T.: 8.943 min  
 Delta R.T.: -0.004 min  
 Response: 5177277  
 Conc: 5.03 ng/ml



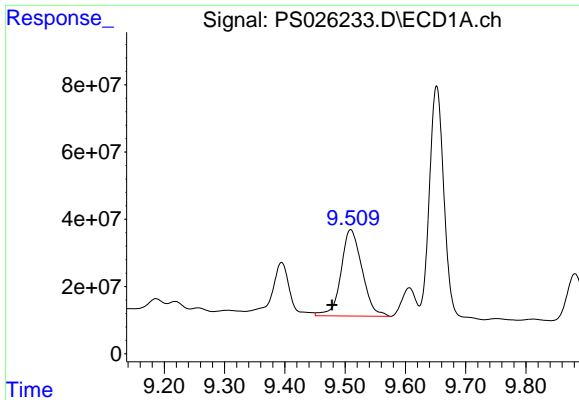
#11 2,4,5-TP (SILVEX)

R.T.: 9.186 min  
 Delta R.T.: -0.001 min  
 Response: 103400468  
 Conc: 5.43 ng/ml



#11 2,4,5-TP (SILVEX)

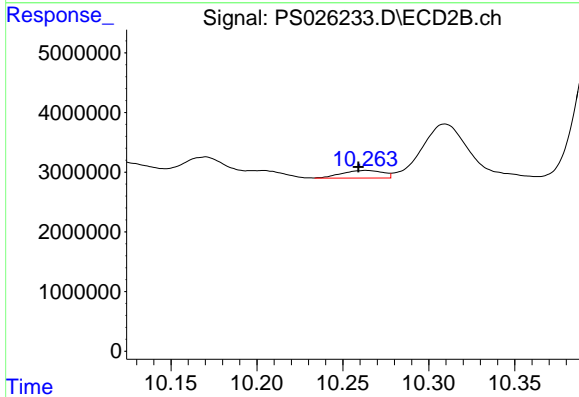
R.T.: 9.865 min  
 Delta R.T.: 0.021 min  
 Response: 111769333  
 Conc: 18.43 ng/ml



#12 2,4,5-T

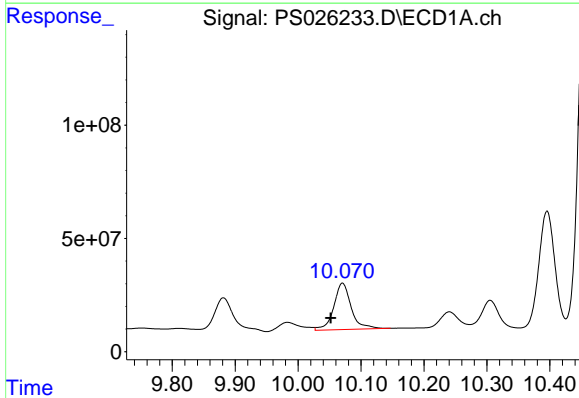
R.T.: 9.509 min  
 Delta R.T.: 0.031 min  
 Response: 624161810  
 Conc: 33.55 ng/ml

Instrument :  
 ECD\_S  
 ClientSampleId :  
 PB159648TB



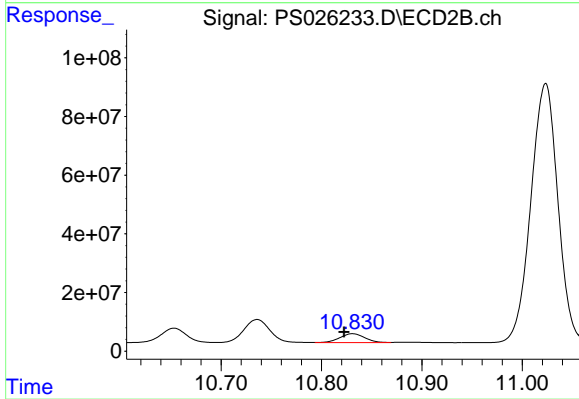
#12 2,4,5-T

R.T.: 10.264 min  
 Delta R.T.: 0.004 min  
 Response: 2108156  
 Conc: N.D.



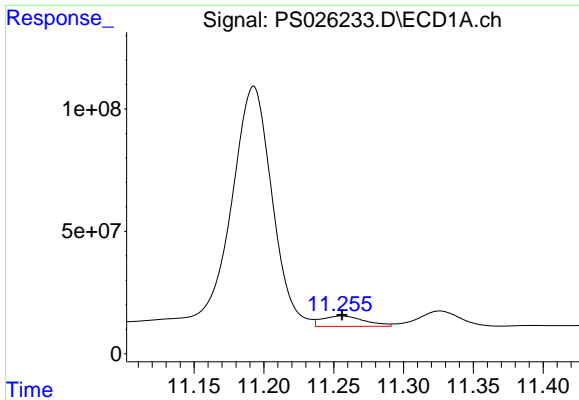
#13 2,4-DB

R.T.: 10.071 min  
 Delta R.T.: 0.018 min  
 Response: 394816548  
 Conc: 157.81 ng/ml



#13 2,4-DB

R.T.: 10.831 min  
 Delta R.T.: 0.008 min  
 Response: 52597589  
 Conc: 87.35 ng/ml

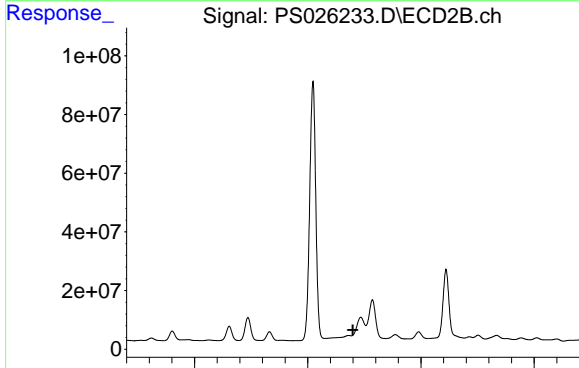


#14 DINOSEB

R.T.: 11.256 min  
 Delta R.T.: 0.000 min  
 Response: 90697686  
 Conc: 6.95 ng/ml

Instrument : ECD\_S  
 ClientSampleId : PB159648TB

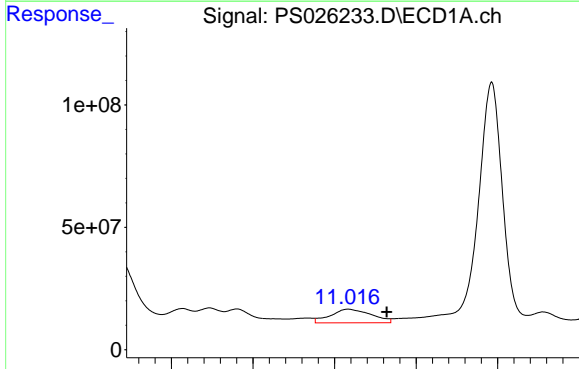
Time 11.15 11.20 11.25 11.30 11.35 11.40



#14 DINOSEB

R.T.: 11.179 min  
 Delta R.T.: -0.020 min  
 Response: -61475109  
 Conc: N.D.

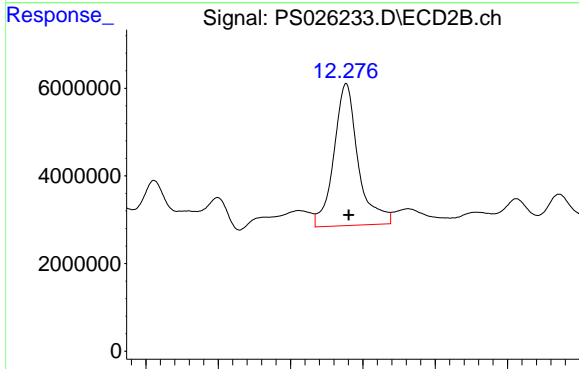
Time 10.50 11.00 11.50 12.00



#15 Picloram

R.T.: 11.017 min  
 Delta R.T.: -0.047 min  
 Response: 193589305  
 Conc: 8.49 ng/ml

Time 10.80 10.90 11.00 11.10 11.20

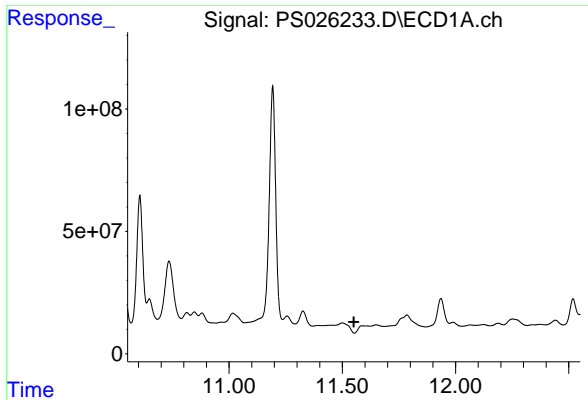


#15 Picloram

R.T.: 12.277 min  
 Delta R.T.: -0.004 min  
 Response: 75702925  
 Conc: 12.43 ng/ml

Time 12.00 12.10 12.20 12.30 12.40 12.50

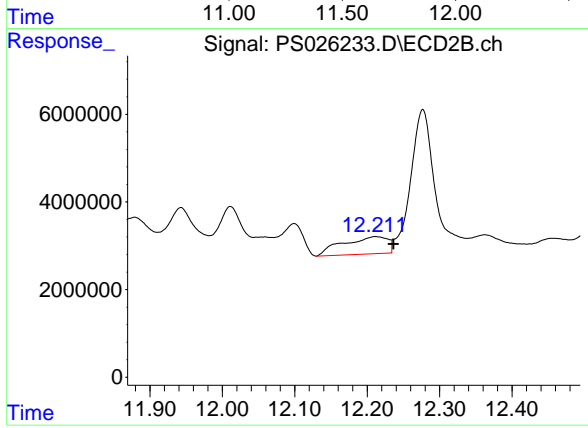




#16 DCPA

R.T.: 11.588 min  
 Delta R.T.: 0.036 min  
 Response: -41531058  
 Conc: N.D.

Instrument :  
 ECD\_S  
 ClientSampleId :  
 PB159648TB



#16 DCPA

R.T.: 12.211 min  
 Delta R.T.: -0.025 min  
 Response: 17113496  
 Conc: 2.44 ng/ml