

Data Path : Z:\pestpcbsrv\HPCHEM1\ECD_S\Data\PS032125\
 Data File : PS029505.D
 Signal(s) : Signal #1: ECD1A.ch Signal #2: ECD2B.ch
 Acq On : 21 Mar 2025 21:46
 Operator : AR\AJ
 Sample : Q1606-09
 Misc :
 ALS Vial : 15 Sample Multiplier: 1

Instrument :
 ECD_S
 ClientSampleId :
 CHRT28607

Integration File signal 1: autoint1.e
 Integration File signal 2: autoint2.e
 Quant Time: Mar 21 23:28:23 2025
 Quant Method : Z:\pestpcbsrv\HPCHEM1\ECD_S\Method\PS032025.M
 Quant Title : 8080.M
 QLast Update : Fri Mar 21 04:46:07 2025
 Response via : Initial Calibration
 Integrator: ChemStation

Volume Inj. : 1 µl
 Signal #1 Phase : ZB-MR2 Signal #2 Phase: ZB-MR2
 Signal #1 Info : 30M x 0.32mm x0.5 Signal #2 Info : 30M x 0.32mm x 0.25µm

Compound	RT#1	RT#2	Resp#1	Resp#2	ng/ml	ng/ml

System Monitoring Compounds						
4) S 2,4-DCAA	7.150	7.577	1142.2E6	261.1E6	276.032	300.246
Target Compounds						
1) T Dalapon	2.556f	0.000	709.2E6	0	126.431	N.D. #
2) T 3,5-DICHL...	6.359	6.560	15753086	24459259	2.707	18.347 #
5) T DICAMBA	7.354	7.762f	17916671	59471963	<MDL	11.603 #
6) T MCPP	7.478f	7.888	-15116866	137.2E6	N.D.	59.366
7) T MCPA	7.665	8.140	63231028	66363139	3.668	22.113 #
8) T DICHLORPROP	8.066f	8.507	6537.6E6	56664853	1415.800	46.820 #
9) T 2,4-D	8.275	8.851f	472.9E6	4283831	104.547	3.568 #
10) T Pentachlo...	8.555	9.345	93642528	15931892	1.669	<MDL #
12) T 2,4,5-T	9.429	10.076f	9281850	63962899	<MDL	8.206 #
13) T 2,4-DB	9.982	10.652f	212.2E6	357.7E6	58.051	475.351 #
14) T DINOSEB	0.000	11.020f	0	220.3E6	N.D.	38.173
15) T Picloram	11.024	12.096f	284.4E6	73163888	9.440	6.447 #
16) T DCPA	11.467	12.096	53212473	73163888	1.776	6.119 #

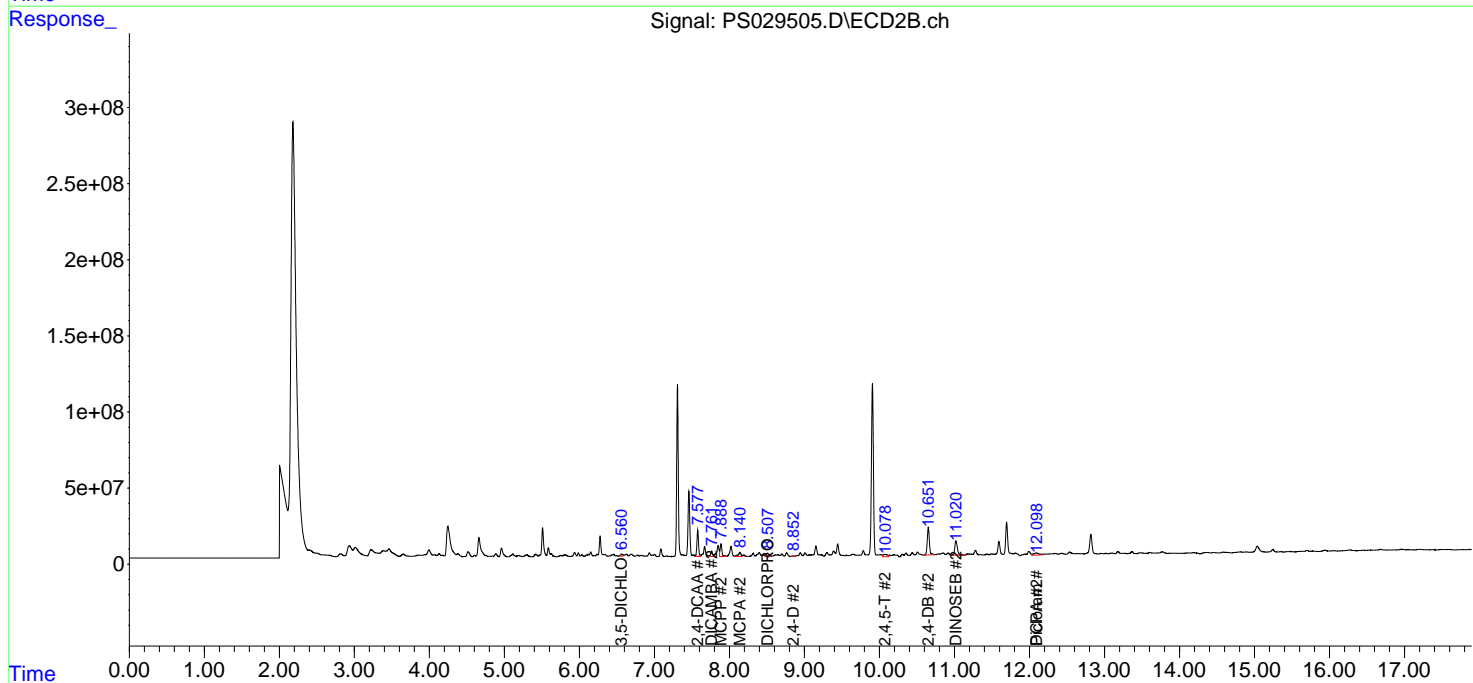
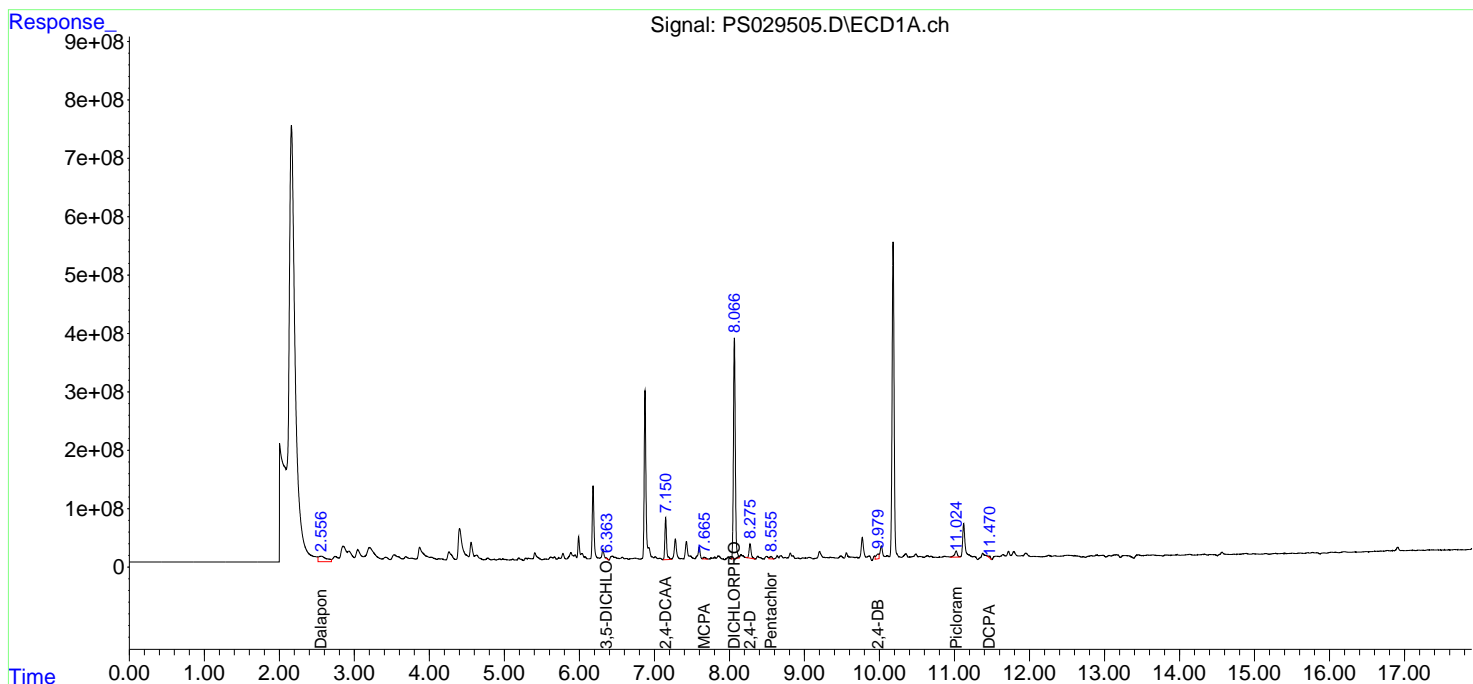
(f)=RT Delta > 1/2 Window (#)=Amounts differ by > 25% (m)=manual int.

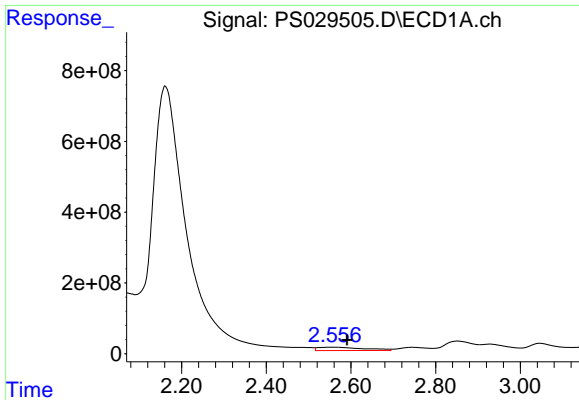
Data Path : Z:\pestpcbsrv\HPCHEM1\ECD_S\Data\PS032125\
 Data File : PS029505.D
 Signal(s) : Signal #1: ECD1A.ch Signal #2: ECD2B.ch
 Acq On : 21 Mar 2025 21:46
 Operator : AR\AJ
 Sample : Q1606-09
 Misc :
 ALS Vial : 15 Sample Multiplier: 1

Instrument :
 ECD_S
 ClientSampleId :
 CHRT28607

Integration File signal 1: autoint1.e
 Integration File signal 2: autoint2.e
 Quant Time: Mar 21 23:28:23 2025
 Quant Method : Z:\pestpcbsrv\HPCHEM1\ECD_S\Method\PS032025.M
 Quant Title : 8080.M
 QLast Update : Fri Mar 21 04:46:07 2025
 Response via : Initial Calibration
 Integrator: ChemStation

Volume Inj. : 1 µl
 Signal #1 Phase : ZB-MR1 Signal #2 Phase: ZB-MR2
 Signal #1 Info : 30M x 0.32mm x0.5 Signal #2 Info : 30M x 0.32mm x 0.25µm

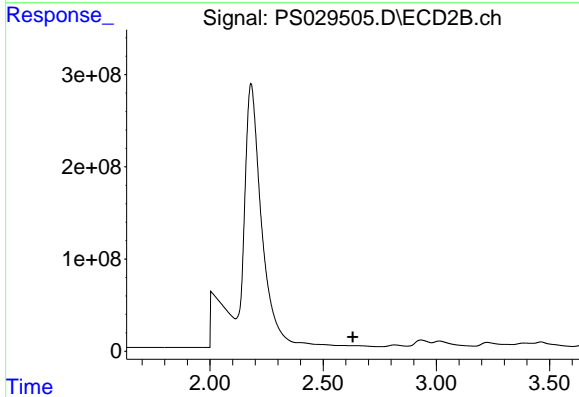




#1 Dalapon

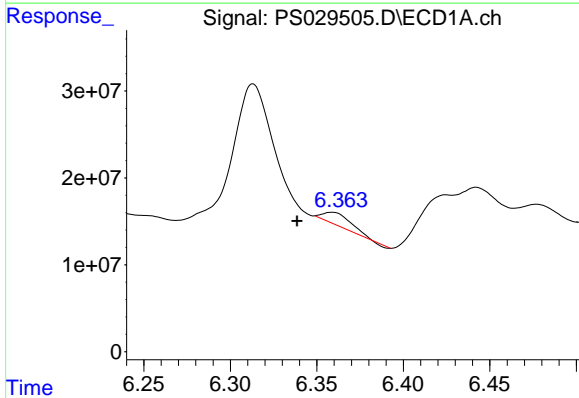
R.T.: 2.556 min
 Delta R.T.: -0.035 min
 Response: 709214775
 Conc: 126.43 ng/ml

Instrument :
 ECD_S
 ClientSampleId :
 CHRT28607



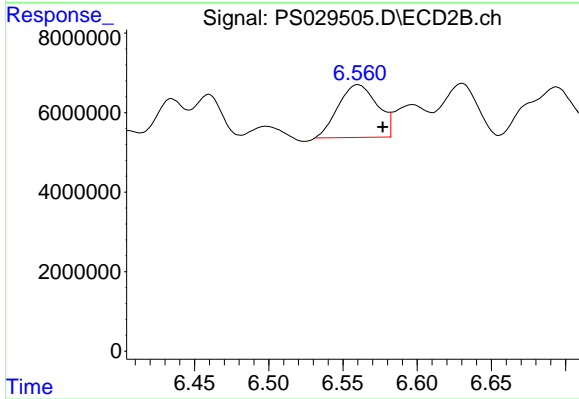
#1 Dalapon

R.T.: 0.000 min
 Exp R.T. : 2.631 min
 Response: 0
 Conc: N.D.



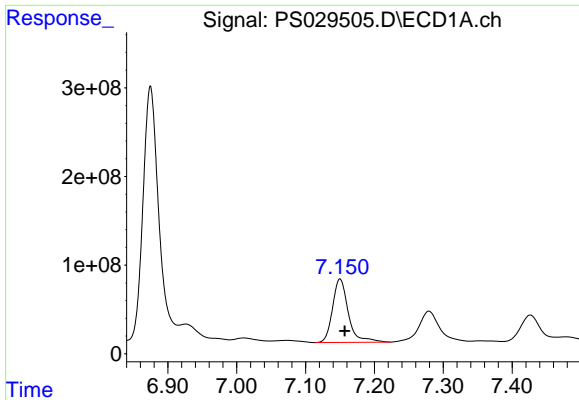
#2 3,5-DICHLOROBENZOIC ACID

R.T.: 6.359 min
 Delta R.T.: 0.020 min
 Response: 15753086
 Conc: 2.71 ng/ml



#2 3,5-DICHLOROBENZOIC ACID

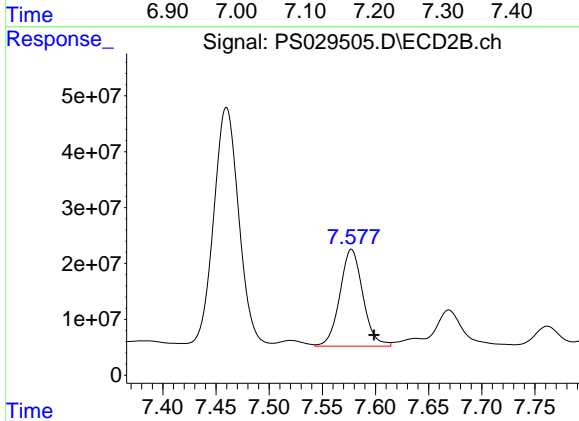
R.T.: 6.560 min
 Delta R.T.: -0.017 min
 Response: 24459259
 Conc: 18.35 ng/ml



#4 2,4-DCAA

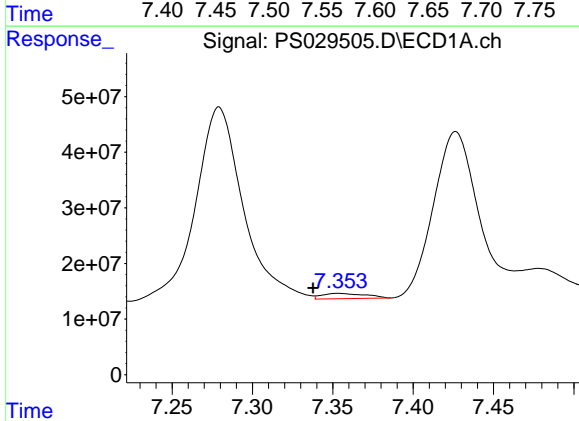
R.T.: 7.150 min
 Delta R.T.: -0.007 min
 Response: 1142226374
 Conc: 276.03 ng/ml

Instrument :
 ECD_S
 ClientSampleId :
 CHRT28607



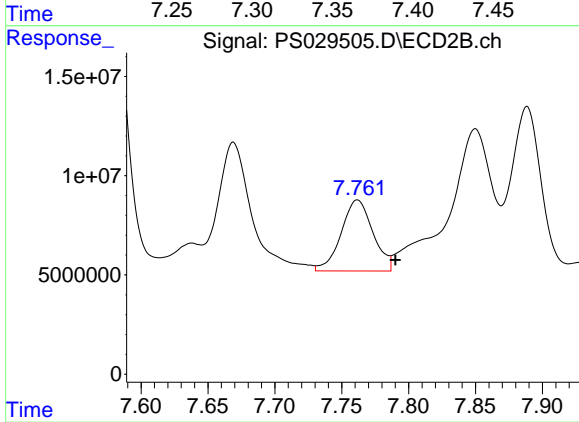
#4 2,4-DCAA

R.T.: 7.577 min
 Delta R.T.: -0.021 min
 Response: 261060628
 Conc: 300.25 ng/ml



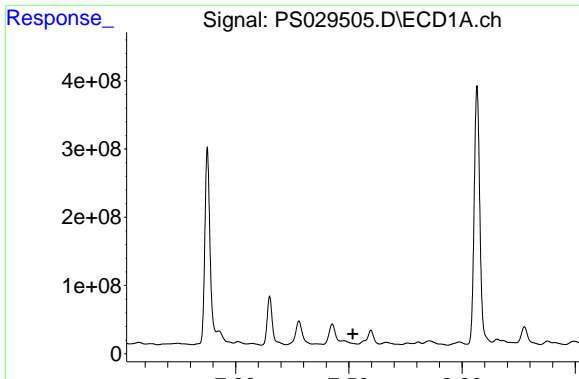
#5 DICAMBA

R.T.: 7.354 min
 Delta R.T.: 0.016 min
 Response: 17916671
 Conc: N.D.



#5 DICAMBA

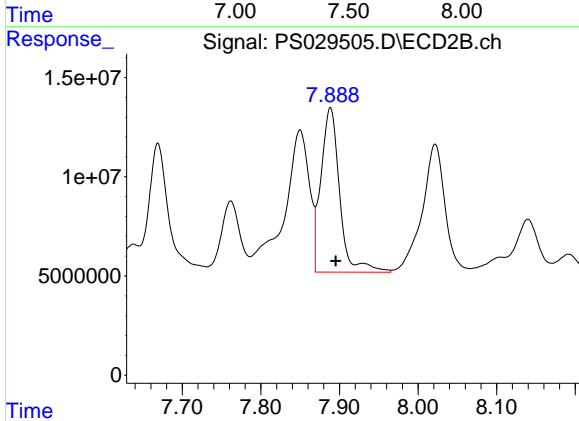
R.T.: 7.762 min
 Delta R.T.: -0.028 min
 Response: 59471963
 Conc: 11.60 ng/ml



#6 MCPP

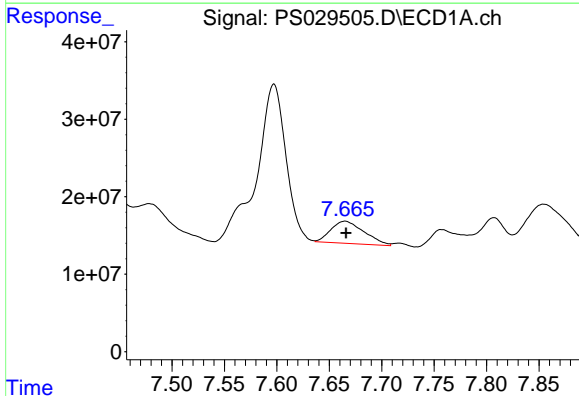
R.T.: 7.478 min
 Delta R.T.: -0.040 min
 Response: -15116866
 Conc: N.D.

Instrument :
 ECD_S
 ClientSampleId :
 CHRT28607



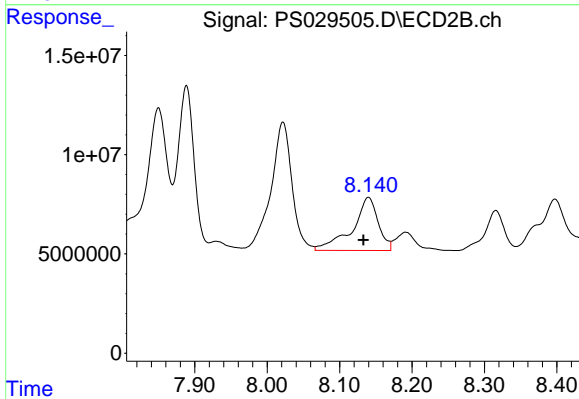
#6 MCPP

R.T.: 7.888 min
 Delta R.T.: -0.007 min
 Response: 137199989
 Conc: 59.37 ug/ml



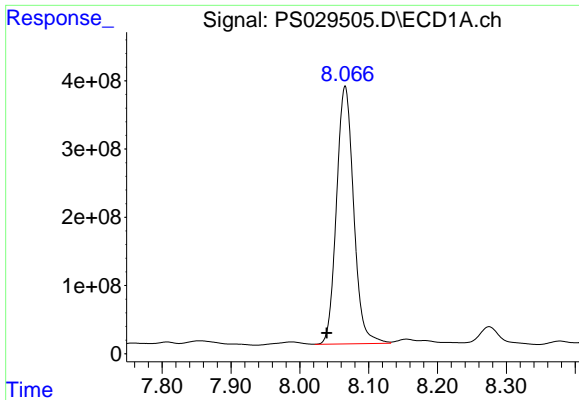
#7 MCPA

R.T.: 7.665 min
 Delta R.T.: -0.001 min
 Response: 63231028
 Conc: 3.67 ug/ml



#7 MCPA

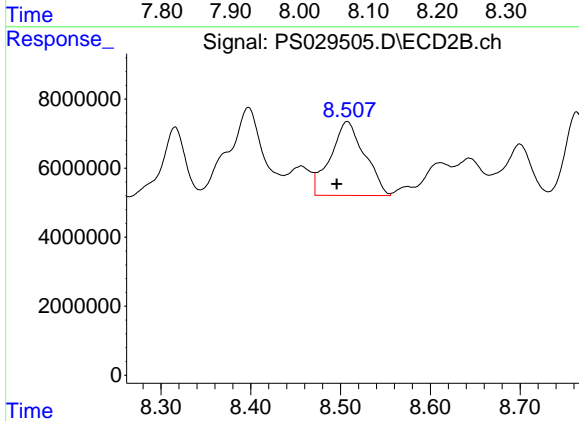
R.T.: 8.140 min
 Delta R.T.: 0.007 min
 Response: 66363139
 Conc: 22.11 ug/ml



#8 DICHLORPROP

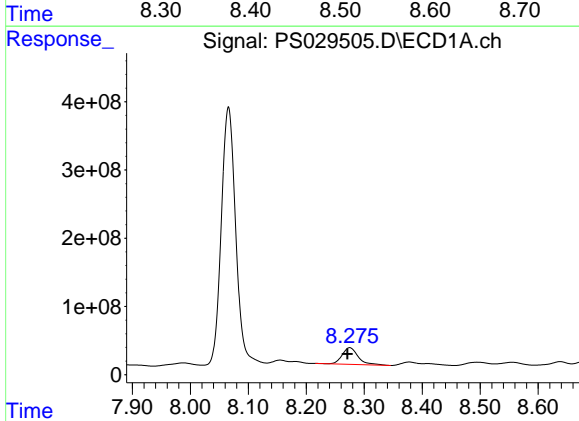
R.T.: 8.066 min
 Delta R.T.: 0.027 min
 Response: 6537621332
 Conc: 1415.80 ng/ml

Instrument :
 ECD_S
 ClientSampleId :
 CHRT28607



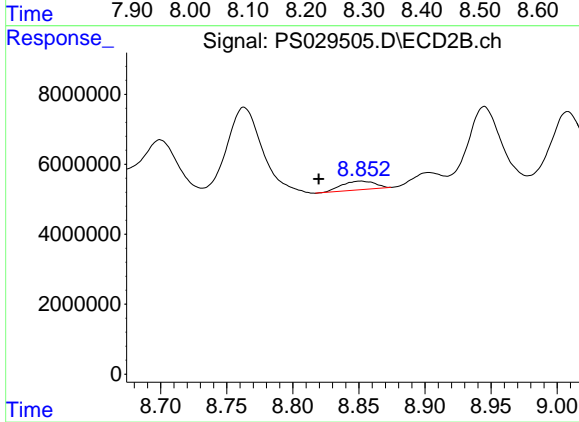
#8 DICHLORPROP

R.T.: 8.507 min
 Delta R.T.: 0.012 min
 Response: 56664853
 Conc: 46.82 ng/ml



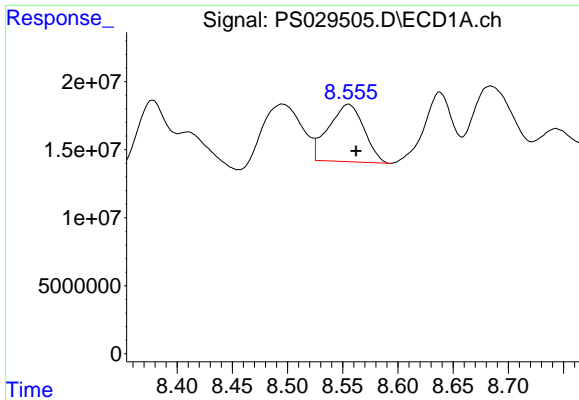
#9 2,4-D

R.T.: 8.275 min
 Delta R.T.: 0.004 min
 Response: 472927007
 Conc: 104.55 ng/ml



#9 2,4-D

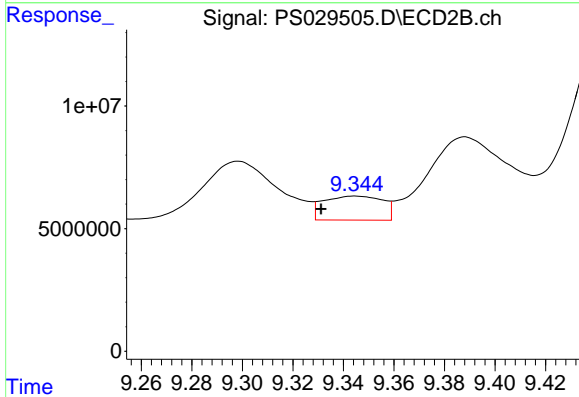
R.T.: 8.851 min
 Delta R.T.: 0.032 min
 Response: 4283831
 Conc: 3.57 ng/ml



#10 Pentachlorophenol

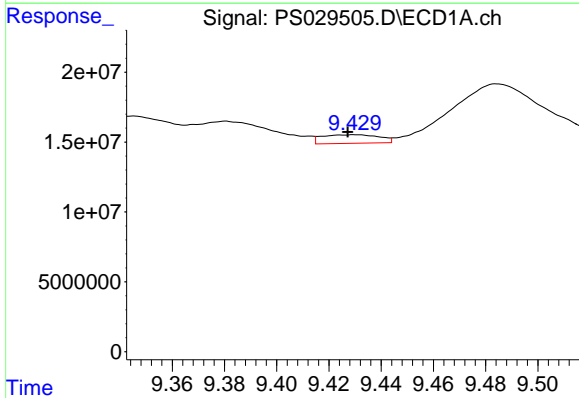
R.T.: 8.555 min
 Delta R.T.: -0.007 min
 Response: 93642528
 Conc: 1.67 ng/ml

Instrument :
 ECD_S
 ClientSampleId :
 CHRT28607



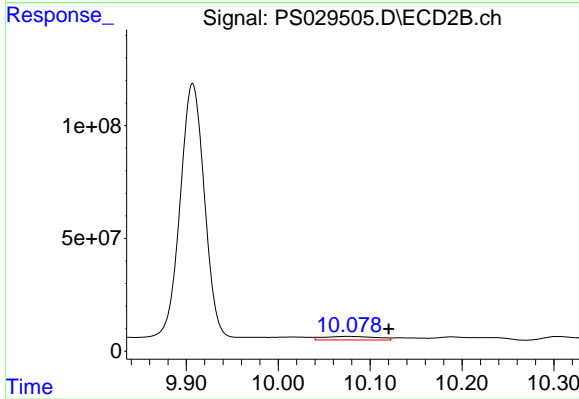
#10 Pentachlorophenol

R.T.: 9.345 min
 Delta R.T.: 0.014 min
 Response: 15931892
 Conc: N.D.



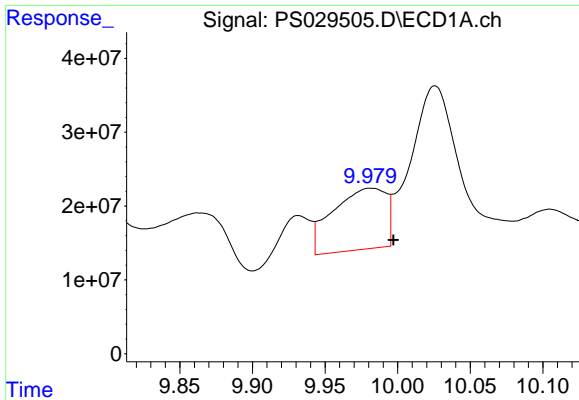
#12 2,4,5-T

R.T.: 9.429 min
 Delta R.T.: 0.002 min
 Response: 9281850
 Conc: N.D.



#12 2,4,5-T

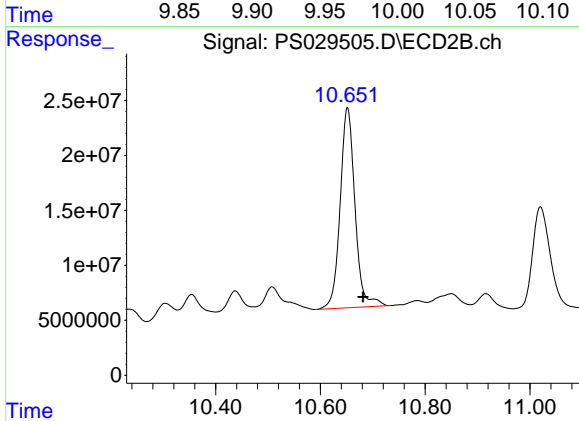
R.T.: 10.076 min
 Delta R.T.: -0.044 min
 Response: 63962899
 Conc: 8.21 ng/ml



#13 2,4-DB

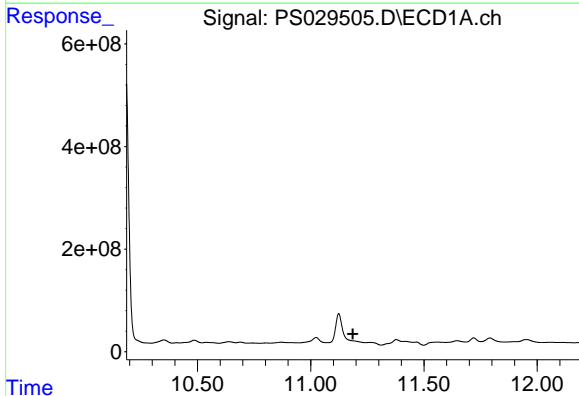
R.T.: 9.982 min
 Delta R.T.: -0.016 min
 Response: 212203357
 Conc: 58.05 ng/ml

Instrument :
 ECD_S
 ClientSampleId :
 CHRT28607



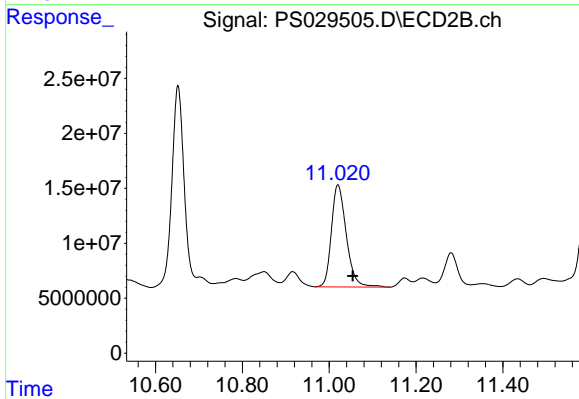
#13 2,4-DB

R.T.: 10.652 min
 Delta R.T.: -0.030 min
 Response: 357700894
 Conc: 475.35 ng/ml



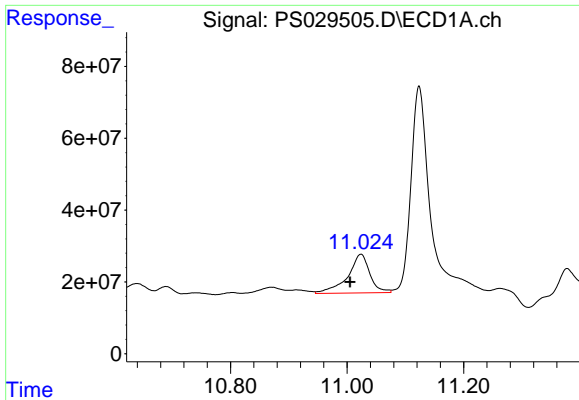
#14 DINOSEB

R.T.: 0.000 min
 Exp R.T. : 11.186 min
 Response: 0
 Conc: N.D.



#14 DINOSEB

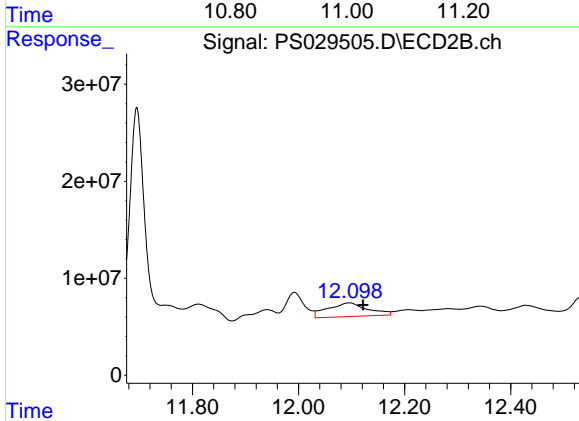
R.T.: 11.020 min
 Delta R.T.: -0.034 min
 Response: 220326536
 Conc: 38.17 ng/ml



#15 Picloram

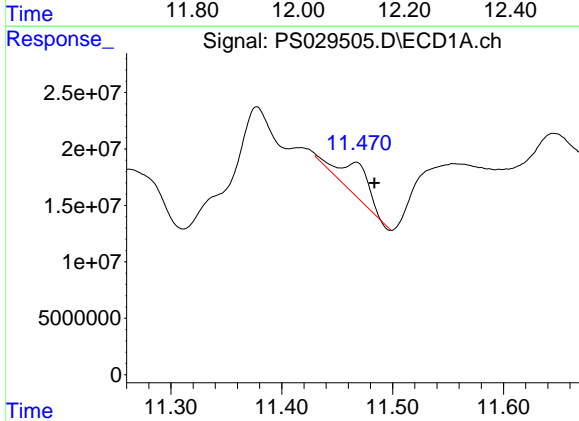
R.T.: 11.024 min
 Delta R.T.: 0.018 min
 Response: 284388936
 Conc: 9.44 ng/ml

Instrument :
 ECD_S
 ClientSampleId :
 CHRT28607



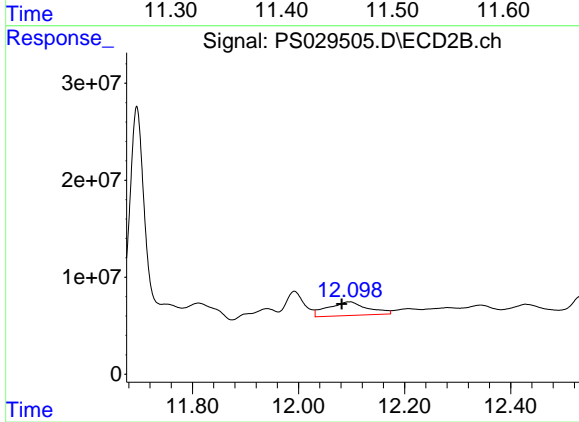
#15 Picloram

R.T.: 12.096 min
 Delta R.T.: -0.026 min
 Response: 73163888
 Conc: 6.45 ng/ml



#16 DCPA

R.T.: 11.467 min
 Delta R.T.: -0.017 min
 Response: 53212473
 Conc: 1.78 ng/ml



#16 DCPA

R.T.: 12.096 min
 Delta R.T.: 0.014 min
 Response: 73163888
 Conc: 6.12 ng/ml