

Data Path : Z:\pestpcbsrv\HPCHEM1\ECD\_S\Data\PS032221\  
 Data File : PS014303.D  
 Signal(s) : Signal #1: ECD1A.ch Signal #2: ECD2B.ch  
 Acq On : 22 Mar 2021 09:43  
 Operator : DD\AJ  
 Sample : HSTDCCC750  
 Misc :  
 ALS Vial : 3 Sample Multiplier: 1

Instrument :  
 ECD\_S  
 ClientSampleId :

Integration File signal 1: autoint1.e  
 Integration File signal 2: autoint2.e  
 Quant Time: Mar 22 13:04:20 2021  
 Quant Method : Z:\pestpcbsrv\HPCHEM1\ECD\_S\Method\PS031721.M  
 Quant Title : 8080.M  
 QLast Update : Thu Mar 18 02:23:19 2021  
 Response via : Initial Calibration  
 Integrator: ChemStation

Volume Inj. : 2 µl  
 Signal #1 Phase : Rtx-CLPesticides Signal #2 Phase: Rtx-CLPesticides2  
 Signal #1 Info : 30M x 0.32mm x0.5 Signal #2 Info : 30M x 0.32mm x 0.25µm

	Compound	RT#1	RT#2	Resp#1	Resp#2	ng/ml	ng/ml
-----							
System Monitoring Compounds							
4) S	2,4-DCAA	7.165	6.888	1073.1E6	353.2E6	751.041	748.722
Target Compounds							
1) T	Dalapon	3.007	2.602	1081.5E6	410.7E6	694.802	693.551
2) T	3,5-DICHL...	6.389	6.049	1358.5E6	514.2E6	703.670	690.547
3) T	4-Nitroph...	6.998	6.503	528.8E6	199.0E6	708.078	655.138
5) T	DICAMBA	7.353	7.054	3871.4E6	1439.6E6	719.877	718.588
6) T	MCPD	7.520	7.150	302.3E6	120.1E6	72.708	72.121
7) T	MCPA	7.668	7.366	422.1E6	172.4E6	73.365	70.760
8) T	DICHLORPROP	8.039	7.680	942.5E6	356.4E6	711.713	699.501
9) T	2,4-D	8.268	7.976	1061.5E6	400.3E6	720.178	670.483
10) T	Pentachlo...	8.573	8.399	14543.5E6	4915.7E6	730.661	719.758
11) T	2,4,5-TP ...	9.118	8.761	5506.3E6	1973.7E6	714.598	725.438
12) T	2,4,5-T	9.404	9.140	5604.5E6	1934.2E6	720.292	725.491
13) T	2,4-DB	9.951	9.645	992.0E6	252.7E6	641.470	712.721
14) T	DINOSEB	11.105	9.975	4308.4E6	1387.1E6	753.786	767.606
15) T	Picloram	10.928	10.958	7196.8E6	2538.5E6	689.190	669.128
16) T	DCPA	11.371	10.901	8488.0E6	2974.9E6	720.648	725.242

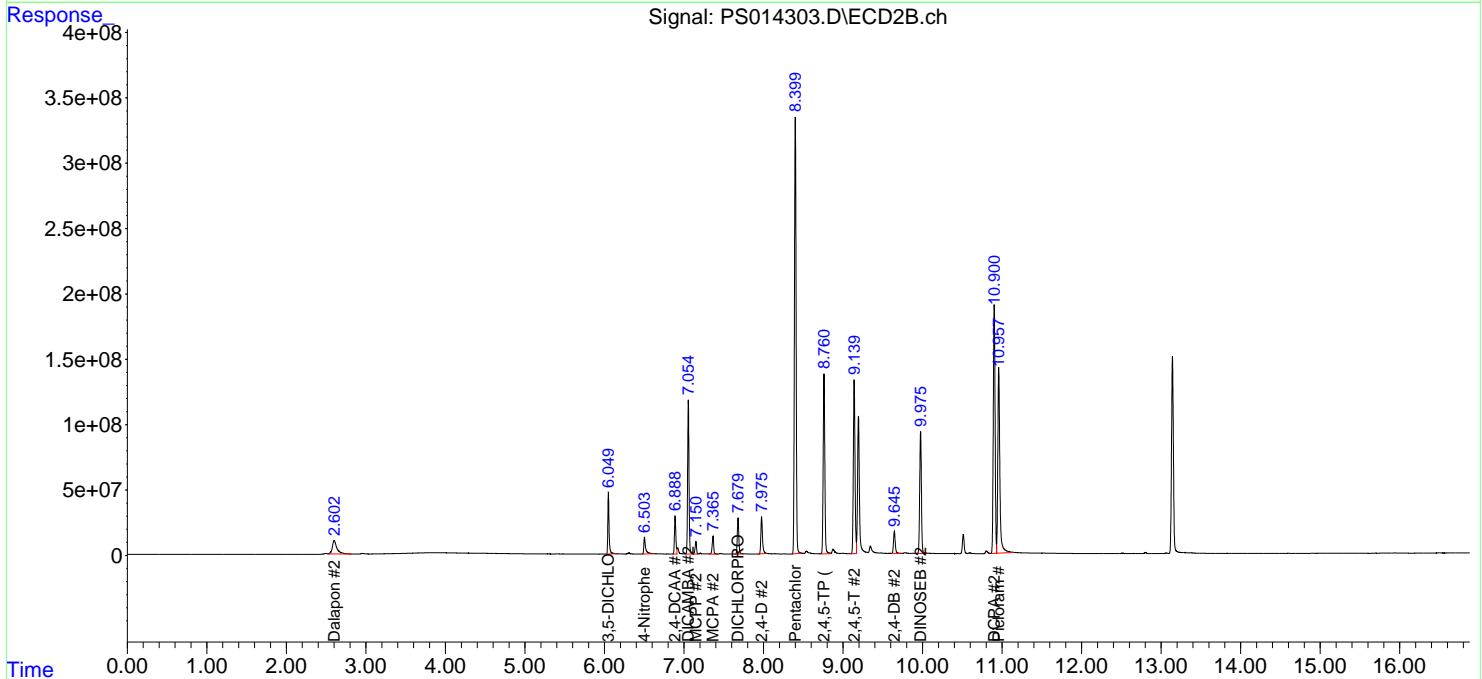
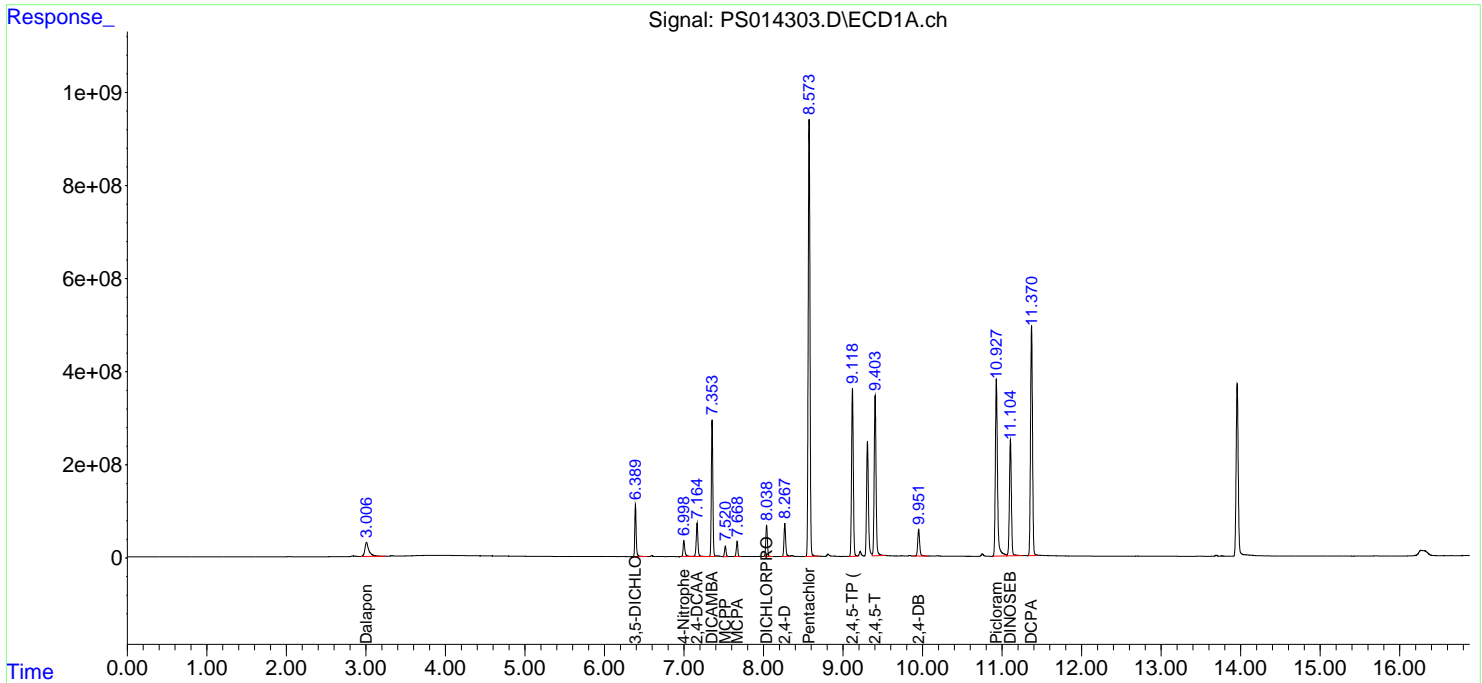
(f)=RT Delta > 1/2 Window (#)=Amounts differ by > 25% (m)=manual int.

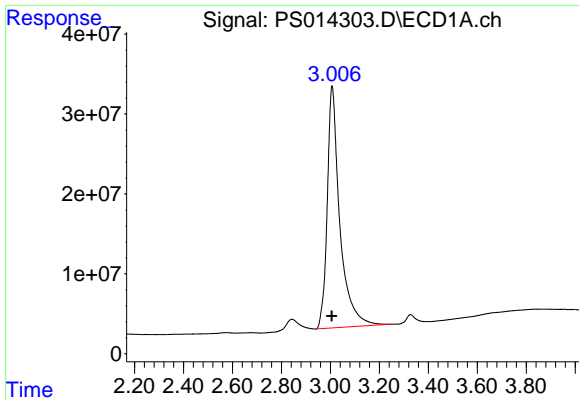
Data Path : Z:\pestpcbsrv\HPCHEM1\ECD\_S\Data\PS032221\  
 Data File : PS014303.D  
 Signal(s) : Signal #1: ECD1A.ch Signal #2: ECD2B.ch  
 Acq On : 22 Mar 2021 09:43  
 Operator : DD\AJ  
 Sample : HSTDCCC750  
 Misc :  
 ALS Vial : 3 Sample Multiplier: 1

Instrument :  
 ECD\_S  
 ClientSampled :

Integration File signal 1: autoint1.e  
 Integration File signal 2: autoint2.e  
 Quant Time: Mar 22 13:04:20 2021  
 Quant Method : Z:\pestpcbsrv\HPCHEM1\ECD\_S\Method\PS031721.M  
 Quant Title : 8080.M  
 QLast Update : Thu Mar 18 02:23:19 2021  
 Response via : Initial Calibration  
 Integrator: ChemStation

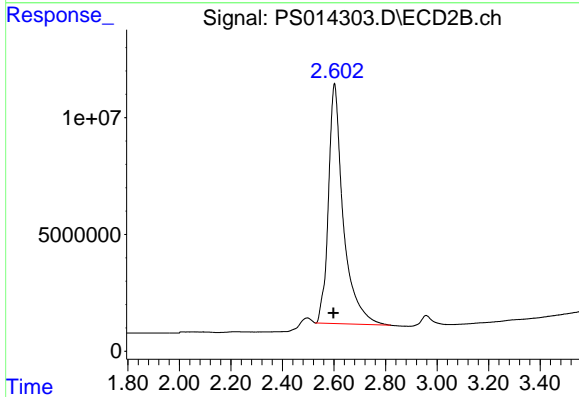
Volume Inj. : 2 µl  
 Signal #1 Phase : Rtx-CLPesticides Signal #2 Phase: Rtx-CLPesticides2  
 Signal #1 Info : 30M x 0.32mm x0.5 Signal #2 Info : 30M x 0.32mm x 0.25µm



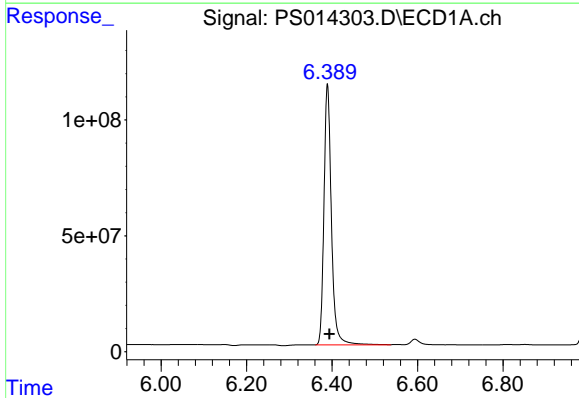


#1 Dalapon  
R.T.: 3.007 min  
Delta R.T.: 0.002 min  
Response: 1081458775  
Conc: 694.80 ng/ml

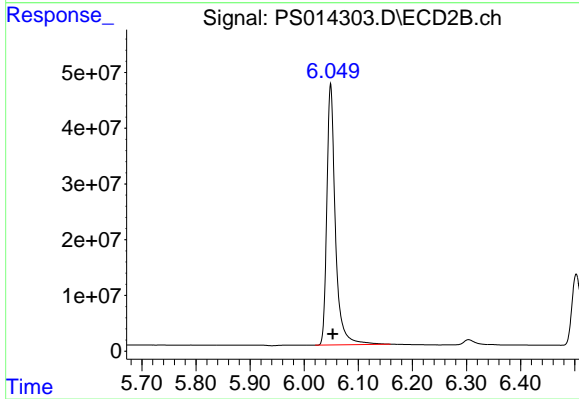
Instrument :  
ECD\_S  
ClientSampleId :



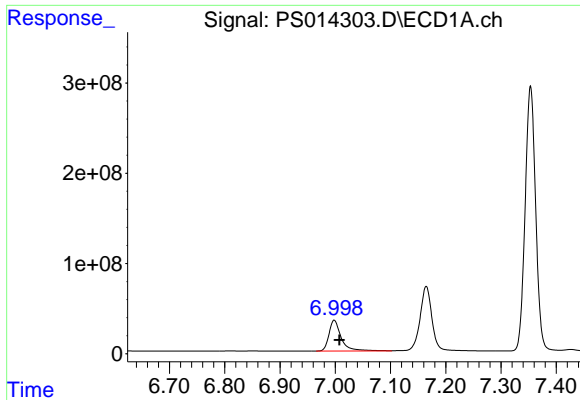
#1 Dalapon  
R.T.: 2.602 min  
Delta R.T.: 0.004 min  
Response: 410684813  
Conc: 693.55 ng/ml



#2 3,5-DICHLOROBENZOIC ACID  
R.T.: 6.389 min  
Delta R.T.: -0.005 min  
Response: 1358466905  
Conc: 703.67 ng/ml

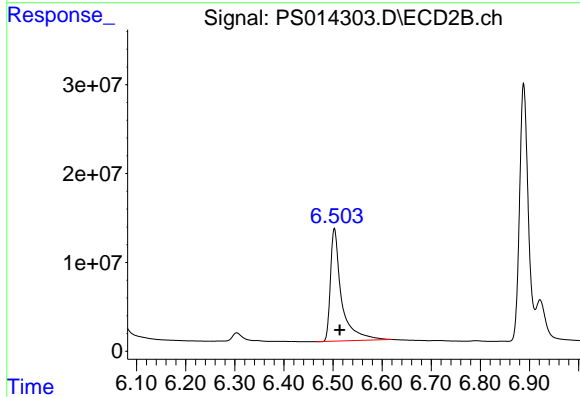


#2 3,5-DICHLOROBENZOIC ACID  
R.T.: 6.049 min  
Delta R.T.: -0.004 min  
Response: 514158782  
Conc: 690.55 ng/ml

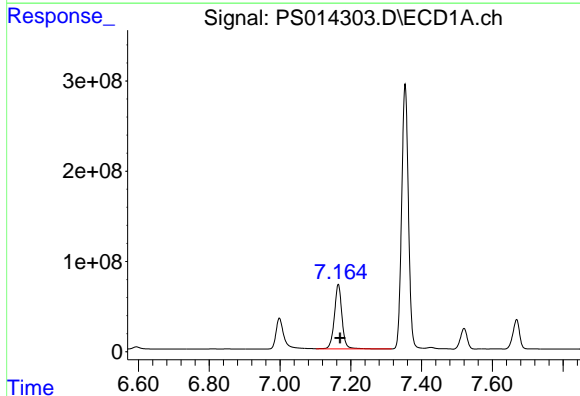


#3 4-Nitrophenol  
R.T.: 6.998 min  
Delta R.T.: -0.009 min  
Response: 528788575  
Conc: 708.08 ng/ml

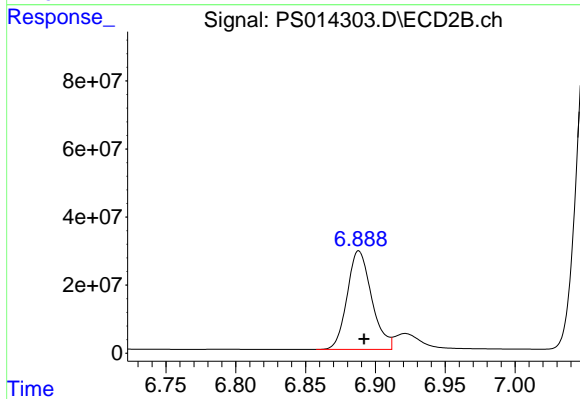
Instrument :  
ECD\_S  
ClientSampleId :



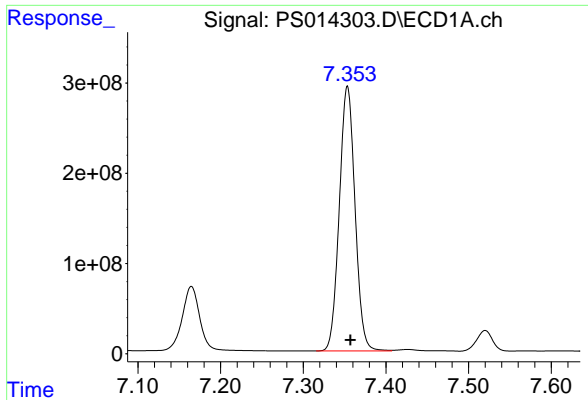
#3 4-Nitrophenol  
R.T.: 6.503 min  
Delta R.T.: -0.011 min  
Response: 199010463  
Conc: 655.14 ng/ml



#4 2,4-DCAA  
R.T.: 7.165 min  
Delta R.T.: -0.005 min  
Response: 1073119717  
Conc: 751.04 ng/ml



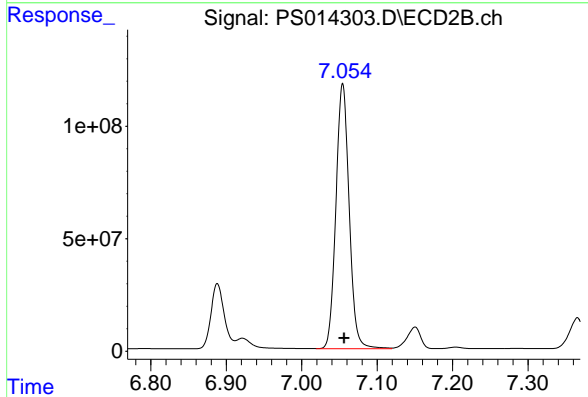
#4 2,4-DCAA  
R.T.: 6.888 min  
Delta R.T.: -0.004 min  
Response: 353223914  
Conc: 748.72 ng/ml



#5 DICAMBA

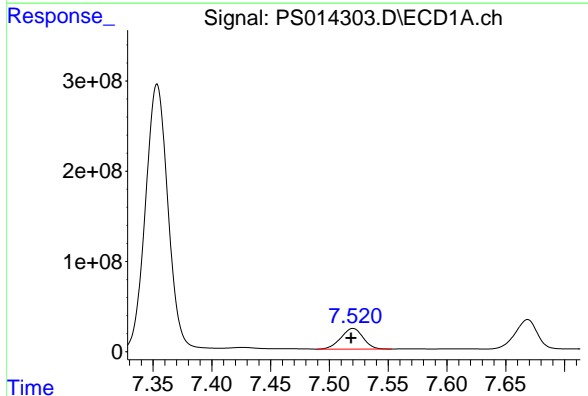
R.T.: 7.353 min  
 Delta R.T.: -0.004 min  
 Response: 3871355034  
 Conc: 719.88 ng/ml

Instrument :  
 ECD\_S  
 ClientSampleId :



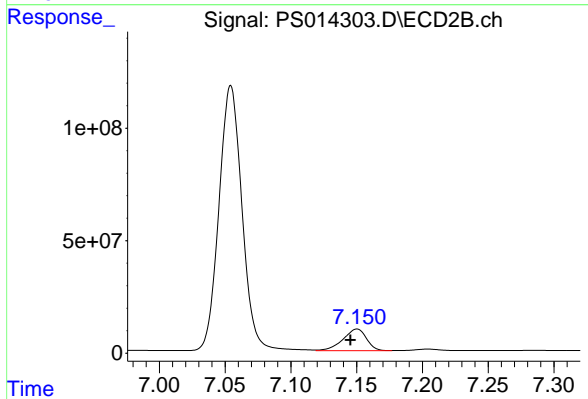
#5 DICAMBA

R.T.: 7.054 min  
 Delta R.T.: -0.002 min  
 Response: 1439555757  
 Conc: 718.59 ng/ml



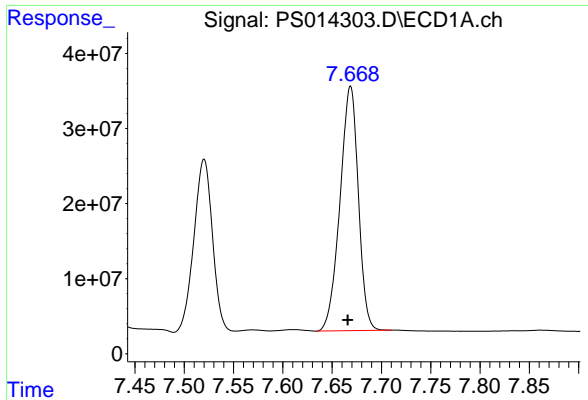
#6 MCP

R.T.: 7.520 min  
 Delta R.T.: 0.002 min  
 Response: 302309074  
 Conc: 72.71 ug/ml



#6 MCP

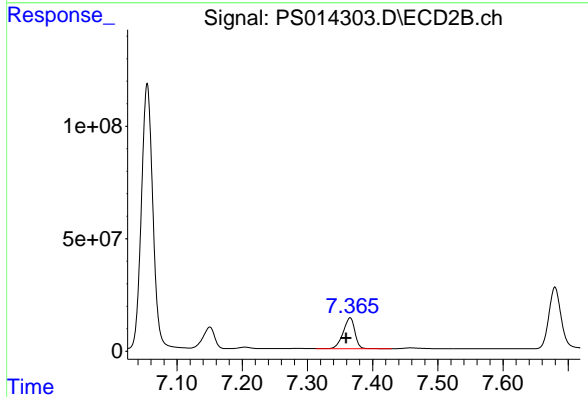
R.T.: 7.150 min  
 Delta R.T.: 0.005 min  
 Response: 120088604  
 Conc: 72.12 ug/ml



#7 MCPA

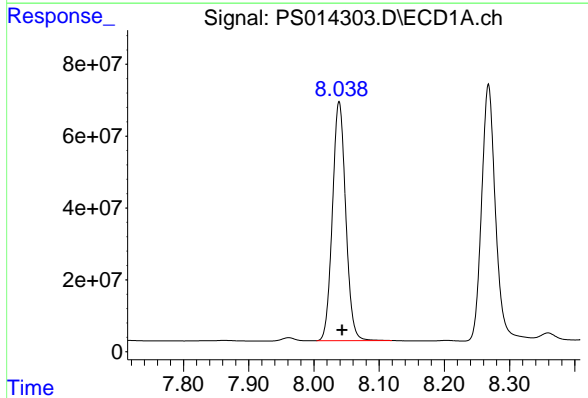
R.T.: 7.668 min  
 Delta R.T.: 0.003 min  
 Response: 422075455  
 Conc: 73.37 ug/ml

Instrument :  
 ECD\_S  
 ClientSampleId :



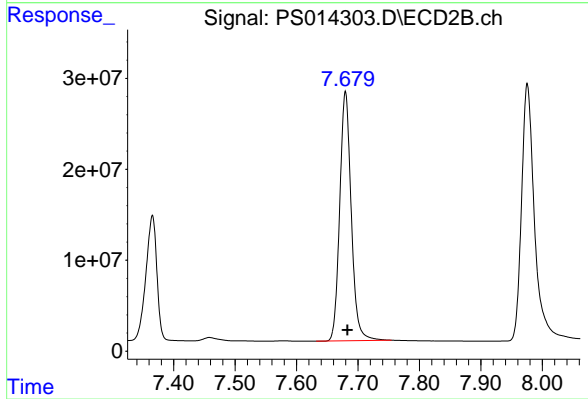
#7 MCPA

R.T.: 7.366 min  
 Delta R.T.: 0.006 min  
 Response: 172416172  
 Conc: 70.76 ug/ml



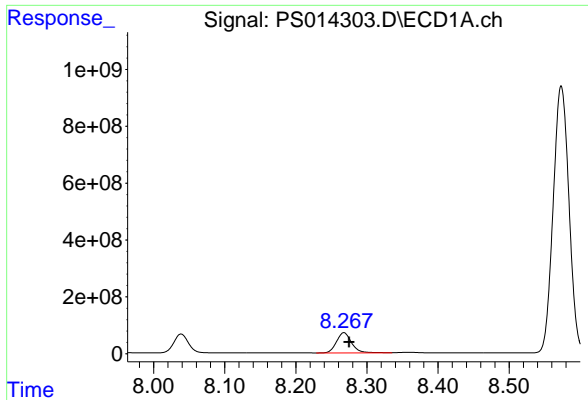
#8 DICHLORPROP

R.T.: 8.039 min  
 Delta R.T.: -0.004 min  
 Response: 942480577  
 Conc: 711.71 ng/ml



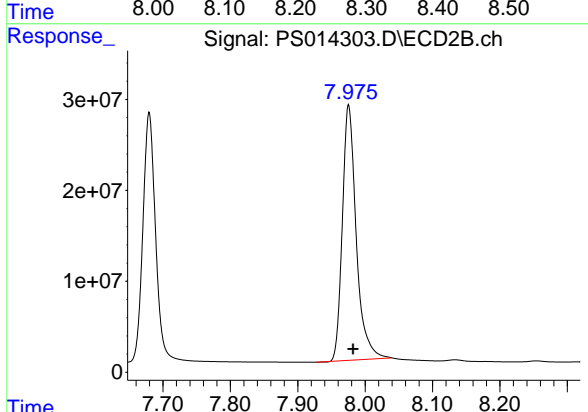
#8 DICHLORPROP

R.T.: 7.680 min  
 Delta R.T.: -0.003 min  
 Response: 356408743  
 Conc: 699.50 ng/ml

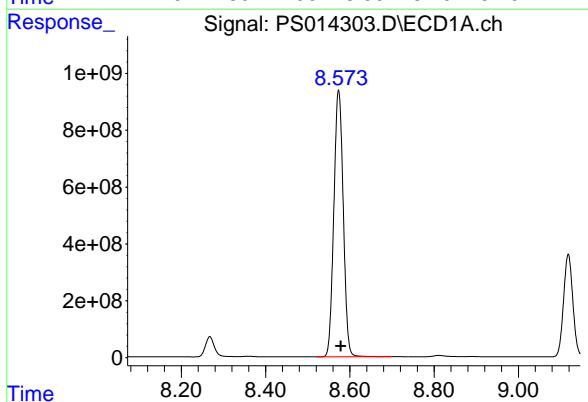


#9 2,4-D  
 R.T.: 8.268 min  
 Delta R.T.: -0.007 min  
 Response: 1061529162  
 Conc: 720.18 ng/ml

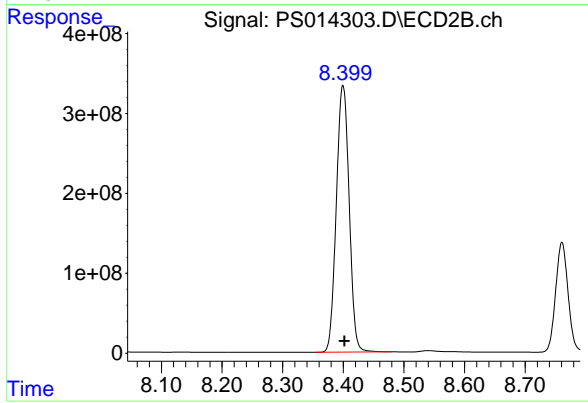
Instrument :  
 ECD\_S  
 ClientSampleId :



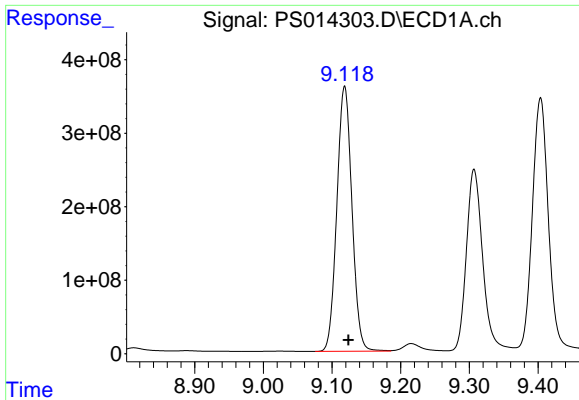
#9 2,4-D  
 R.T.: 7.976 min  
 Delta R.T.: -0.007 min  
 Response: 400340009  
 Conc: 670.48 ng/ml



#10 Pentachlorophenol  
 R.T.: 8.573 min  
 Delta R.T.: -0.005 min  
 Response: 14543530114  
 Conc: 730.66 ng/ml

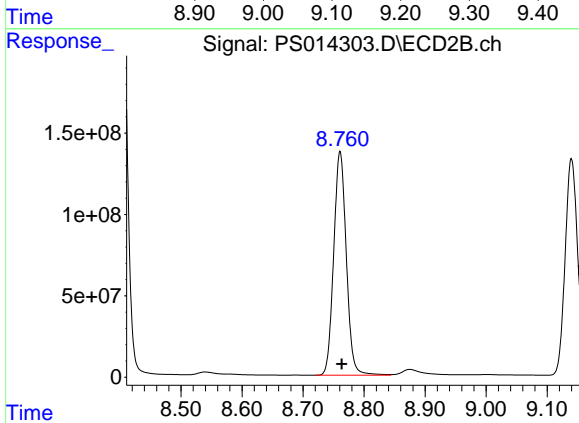


#10 Pentachlorophenol  
 R.T.: 8.399 min  
 Delta R.T.: -0.002 min  
 Response: 4915662136  
 Conc: 719.76 ng/ml

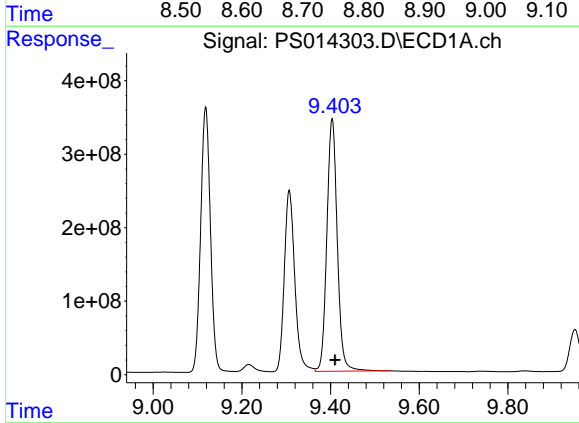


#11 2,4,5-TP (SILVEX)  
 R.T.: 9.118 min  
 Delta R.T.: -0.005 min  
 Response: 5506293170  
 Conc: 714.60 ng/ml

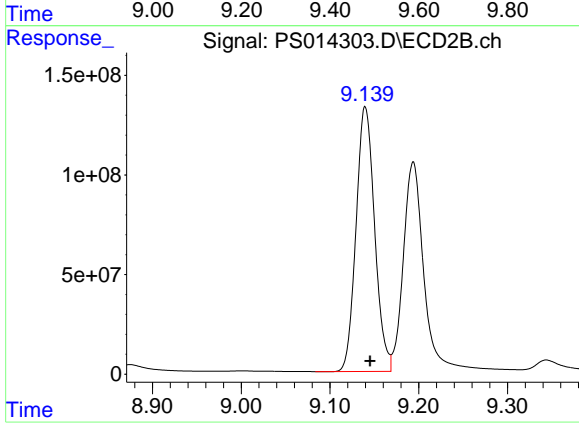
Instrument :  
 ECD\_S  
 ClientSampled :



#11 2,4,5-TP (SILVEX)  
 R.T.: 8.761 min  
 Delta R.T.: -0.003 min  
 Response: 1973671690  
 Conc: 725.44 ng/ml

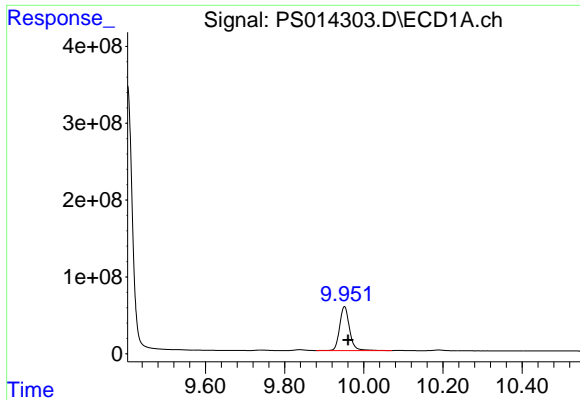


#12 2,4,5-T  
 R.T.: 9.404 min  
 Delta R.T.: -0.007 min  
 Response: 5604513847  
 Conc: 720.29 ng/ml



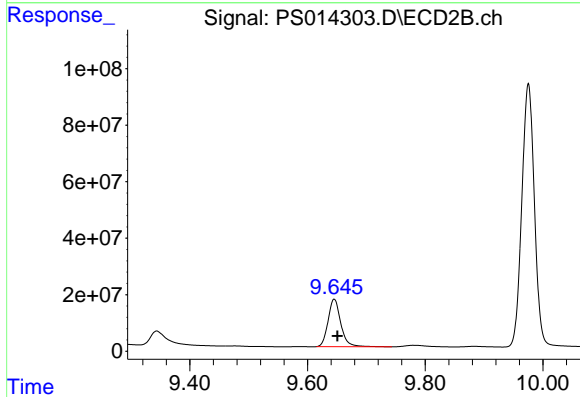
#12 2,4,5-T  
 R.T.: 9.140 min  
 Delta R.T.: -0.005 min  
 Response: 1934215320  
 Conc: 725.49 ng/ml



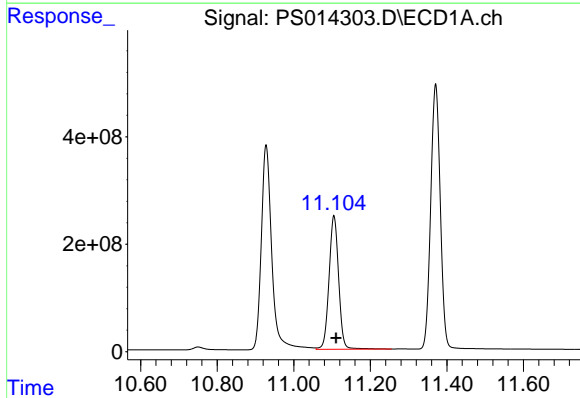


#13 2,4-DB  
 R.T.: 9.951 min  
 Delta R.T.: -0.009 min  
 Response: 991962255  
 Conc: 641.47 ng/ml

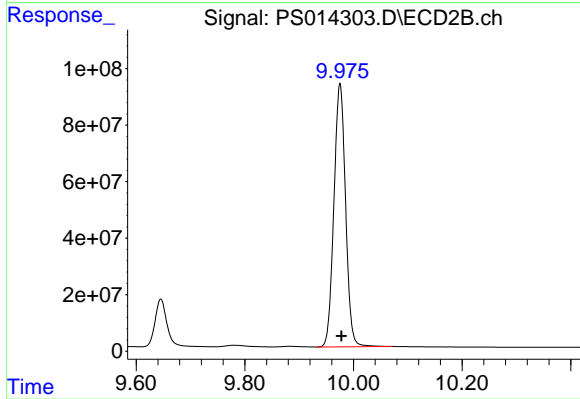
Instrument :  
 ECD\_S  
 ClientSampleId :



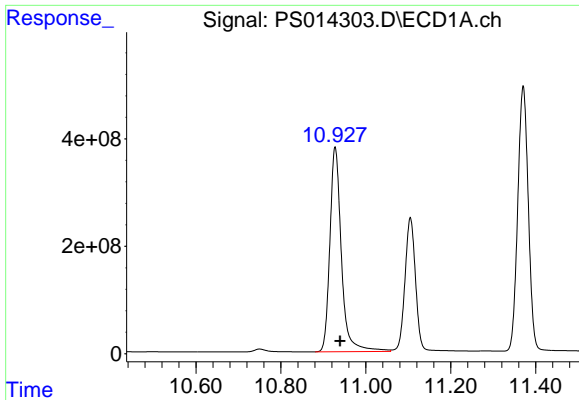
#13 2,4-DB  
 R.T.: 9.645 min  
 Delta R.T.: -0.005 min  
 Response: 252746358  
 Conc: 712.72 ng/ml



#14 DINOSEB  
 R.T.: 11.105 min  
 Delta R.T.: -0.005 min  
 Response: 4308419057  
 Conc: 753.79 ng/ml

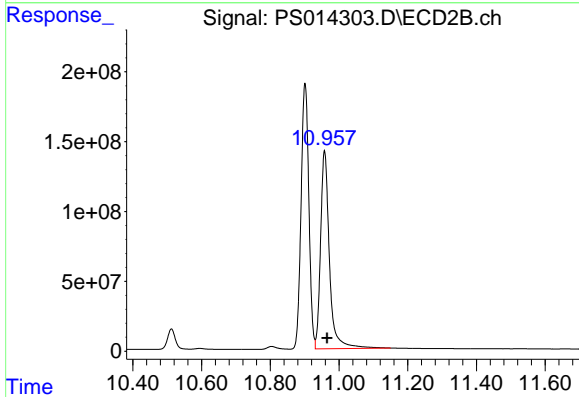


#14 DINOSEB  
 R.T.: 9.975 min  
 Delta R.T.: -0.003 min  
 Response: 1387125553  
 Conc: 767.61 ng/ml

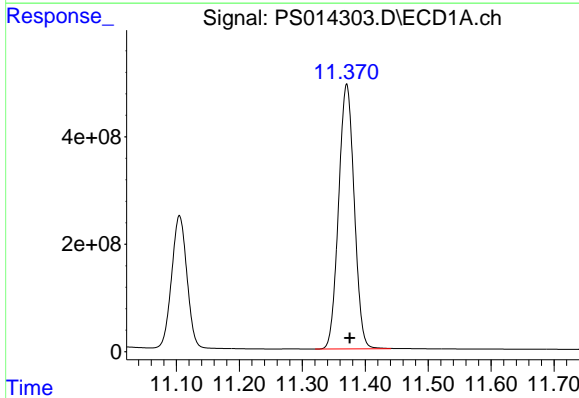


#15 Picloram  
 R.T.: 10.928 min  
 Delta R.T.: -0.012 min  
 Response: 7196773514  
 Conc: 689.19 ng/ml

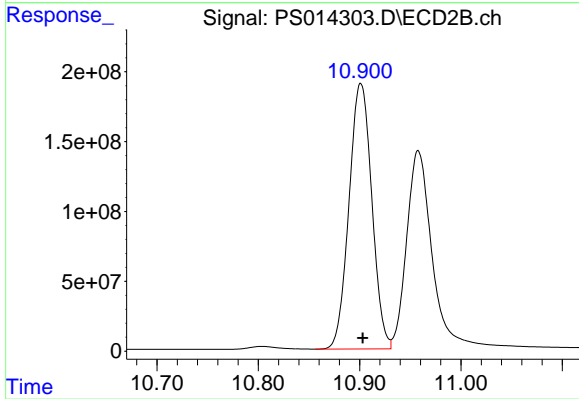
Instrument :  
 ECD\_S  
 ClientSampled :



#15 Picloram  
 R.T.: 10.958 min  
 Delta R.T.: -0.007 min  
 Response: 2538451245  
 Conc: 669.13 ng/ml



#16 DCPA  
 R.T.: 11.371 min  
 Delta R.T.: -0.005 min  
 Response: 8487962877  
 Conc: 720.65 ng/ml



#16 DCPA  
 R.T.: 10.901 min  
 Delta R.T.: -0.002 min  
 Response: 2974859230  
 Conc: 725.24 ng/ml