

Data Path : Z:\pestpcbsrv\HPCHEM1\ECD_S\Data\PS032222\
 Data File : PS018692.D
 Signal(s) : Signal #1: ECD1A.ch Signal #2: ECD2B.ch
 Acq On : 22 Mar 2022 22:34
 Operator : AJ\MA
 Sample : N1962-14
 Misc :
 ALS Vial : 24 Sample Multiplier: 1

Instrument :
 ECD_S
 ClientSampleId :

Integration File signal 1: autoint1.e
 Integration File signal 2: autoint2.e
 Quant Time: Mar 23 01:19:46 2022
 Quant Method : Z:\pestpcbsrv\HPCHEM1\ECD_S\Method\PS031422.M
 Quant Title : 8080.M
 QLast Update : Mon Mar 14 11:41:05 2022
 Response via : Initial Calibration
 Integrator: ChemStation

Volume Inj. : 2 µl
 Signal #1 Phase : Rtx-CLPesticides Signal #2 Phase: Rtx-CLPesticides2
 Signal #1 Info : 30M x 0.32mm x0.5 Signal #2 Info : 30M x 0.32mm x 0.25µm

Compound	RT#1	RT#2	Resp#1	Resp#2	ng/ml	ng/ml

System Monitoring Compounds						
4) S 2,4-DCAA	7.229	6.809	1113.5E6	333.0E6	391.257	473.301
Target Compounds						
1) T Dalapon	2.980f	2.527	89539824	26745755	23.027	32.362 #
2) T 3,5-DICHL...	6.486f	6.007	20484837	84047355	5.316	80.342 #
3) T 4-Nitroph...	0.000	6.406	0	3583148	N.D.	8.820
5) T DICAMBA	7.457	6.977	-4793084	33370797	N.D.	11.204
6) T MCPP	7.591	7.038f	9034140	784263	1.064	<MDL #
7) T MCPA	7.742	7.241f	63695305	4077.5E6	5.267	1167.635 #
8) T DICHLORPROP	8.182f	7.623	17062449	78708371	6.195	99.428 #
9) T 2,4-D	8.364	7.877	149.1E6	106.3E6	44.492	113.587 #
10) T Pentachlo...	8.659	8.321	776.0E6	129.5E6	21.435	13.182 #
11) T 2,4,5-TP ...	9.178f	8.704	473.5E6	30255857	31.136	6.936 #
12) T 2,4,5-T	9.547f	9.088	208.8E6	409.1E6	13.975	98.760 #
13) T 2,4-DB	10.042	9.586	1138.5E6	666.7E6	416.224	1174.297 #
14) T DINOSEB	11.178	9.899	562.6E6	423.7E6	52.610	138.296 #
15) T Picloram	11.011	10.892	48829.0E6	3933.1E6	2375.442	739.844 #
16) T DCPA	11.481	10.833	-176238732	68545627	N.D.	13.033

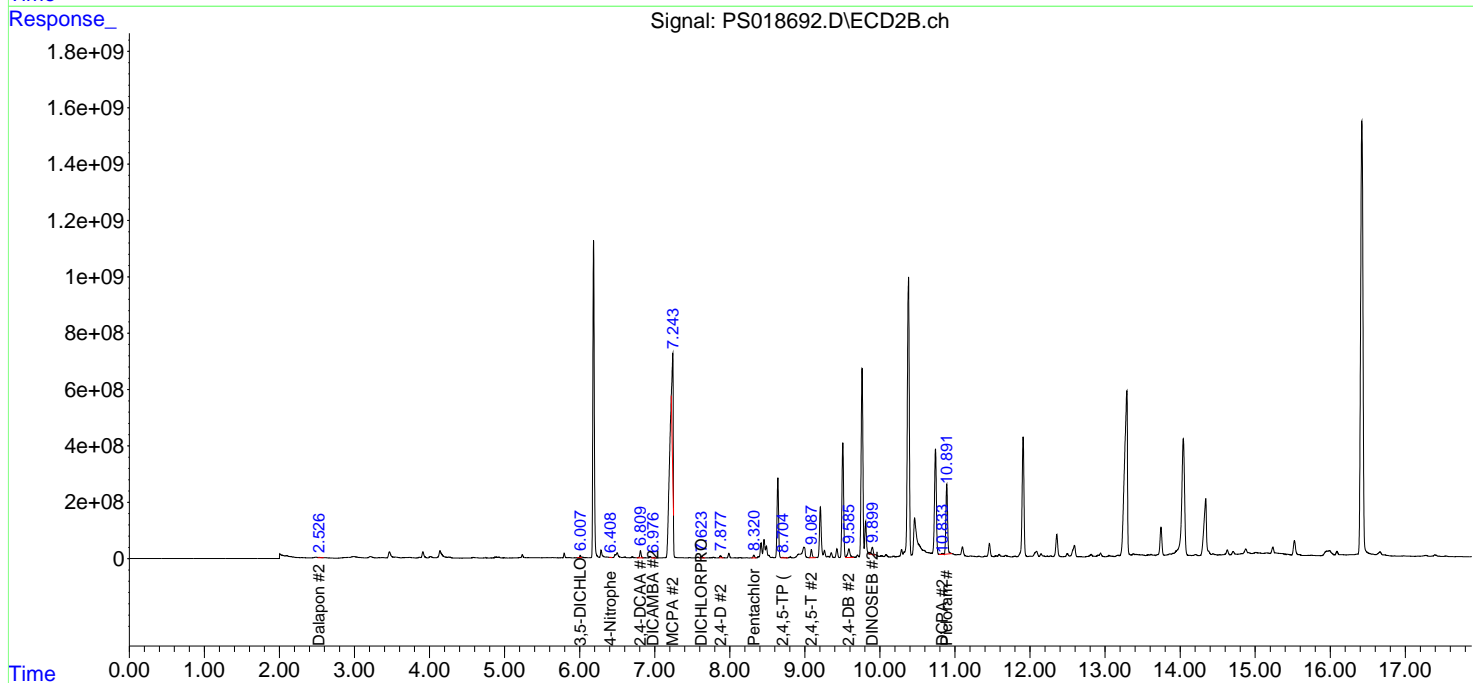
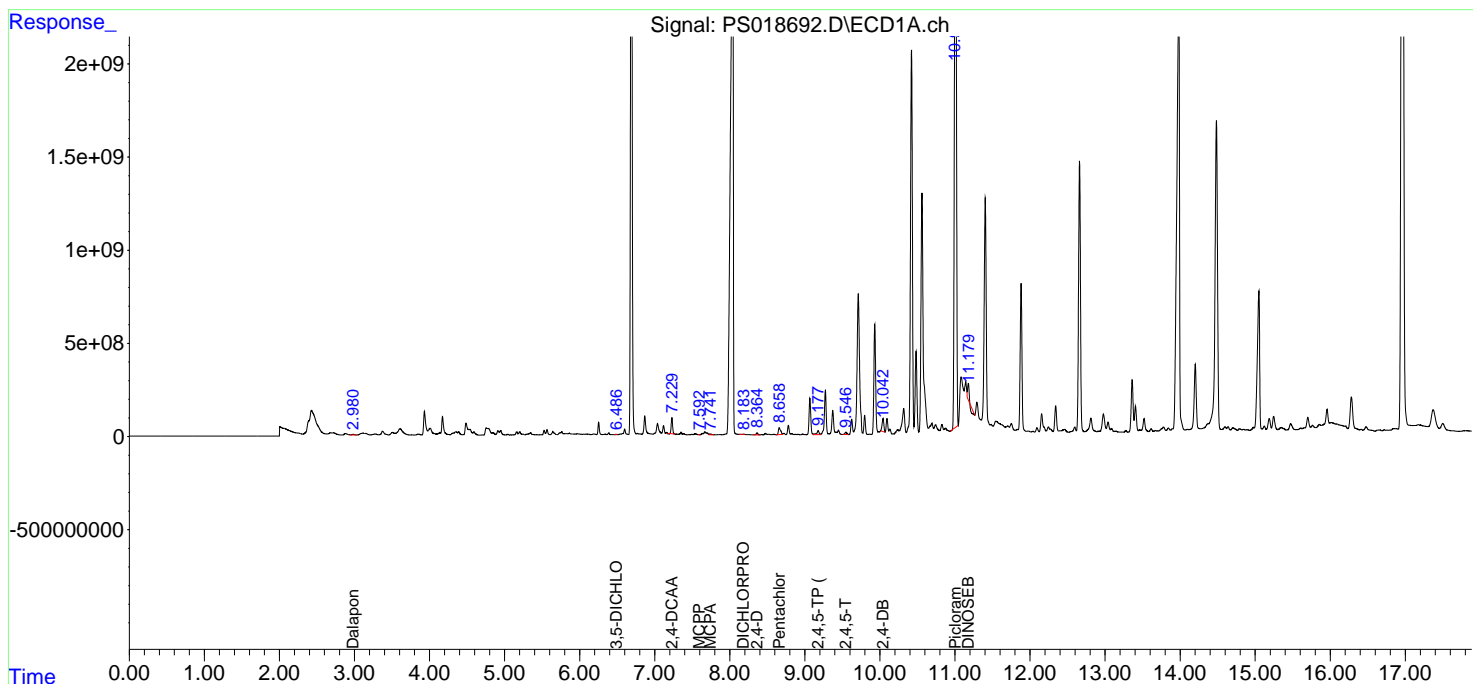
(f)=RT Delta > 1/2 Window (#)=Amounts differ by > 25% (m)=manual int.

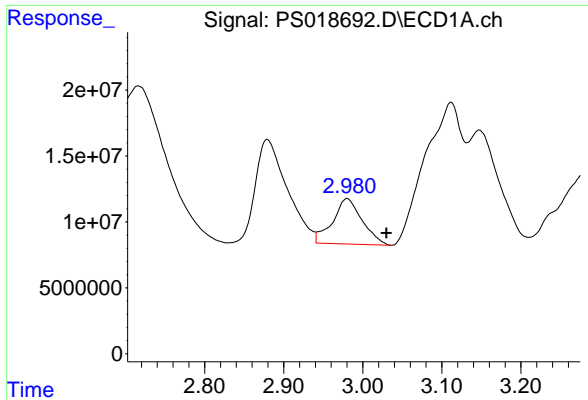
Data Path : Z:\pestpcbsrv\HPCHEM1\ECD_S\Data\PS032222\
 Data File : PS018692.D
 Signal(s) : Signal #1: ECD1A.ch Signal #2: ECD2B.ch
 Acq On : 22 Mar 2022 22:34
 Operator : AJ\MA
 Sample : N1962-14
 Misc :
 ALS Vial : 24 Sample Multiplier: 1

Instrument :
 ECD_S
 ClientSampleId :

Integration File signal 1: autoint1.e
 Integration File signal 2: autoint2.e
 Quant Time: Mar 23 01:19:46 2022
 Quant Method : Z:\pestpcbsrv\HPCHEM1\ECD_S\Method\PS031422.M
 Quant Title : 8080.M
 QLast Update : Mon Mar 14 11:41:05 2022
 Response via : Initial Calibration
 Integrator: ChemStation

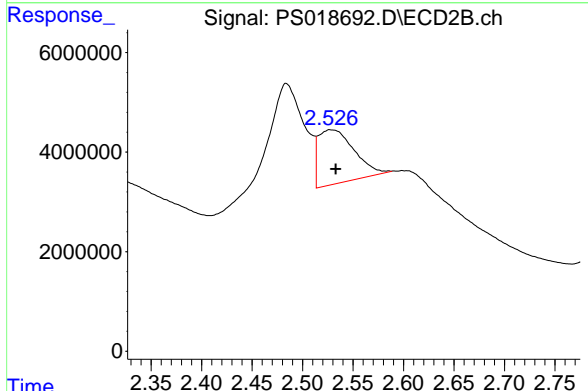
Volume Inj. : 2 µl
 Signal #1 Phase : Rtx-CLPesticides Signal #2 Phase: Rtx-CLPesticides2
 Signal #1 Info : 30M x 0.32mm x 0.5 Signal #2 Info : 30M x 0.32mm x 0.25µm



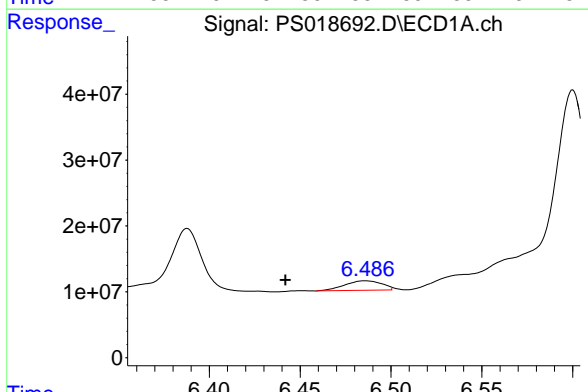


#1 Dalapon
 R.T.: 2.980 min
 Delta R.T.: -0.050 min
 Response: 89539824
 Conc: 23.03 ng/ml

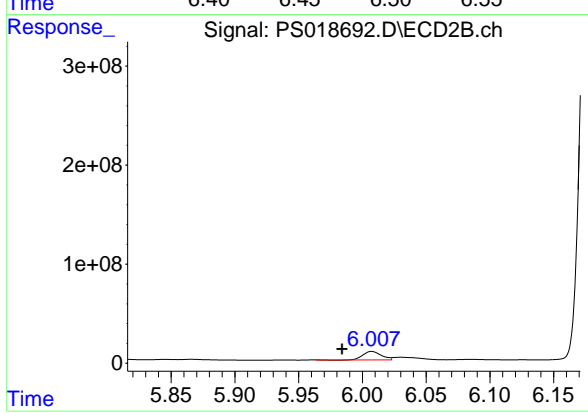
Instrument :
 ECD_S
 ClientSampleId :



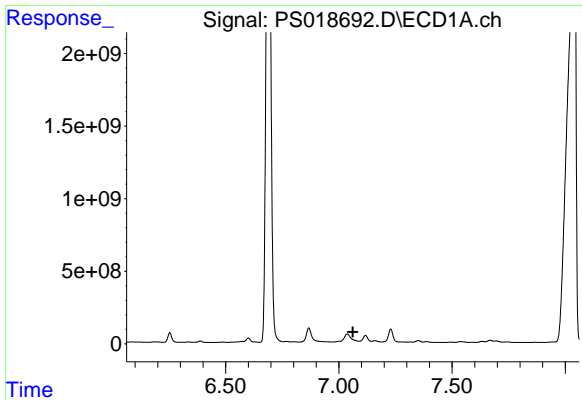
#1 Dalapon
 R.T.: 2.527 min
 Delta R.T.: -0.006 min
 Response: 26745755
 Conc: 32.36 ng/ml



#2 3,5-DICHLOROBENZOIC ACID
 R.T.: 6.486 min
 Delta R.T.: 0.044 min
 Response: 20484837
 Conc: 5.32 ng/ml



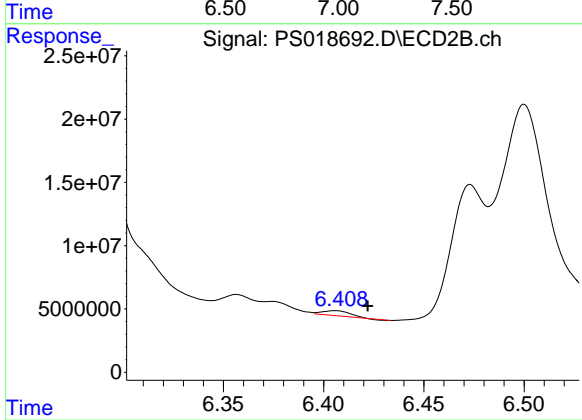
#2 3,5-DICHLOROBENZOIC ACID
 R.T.: 6.007 min
 Delta R.T.: 0.023 min
 Response: 84047355
 Conc: 80.34 ng/ml



#3 4-Nitrophenol

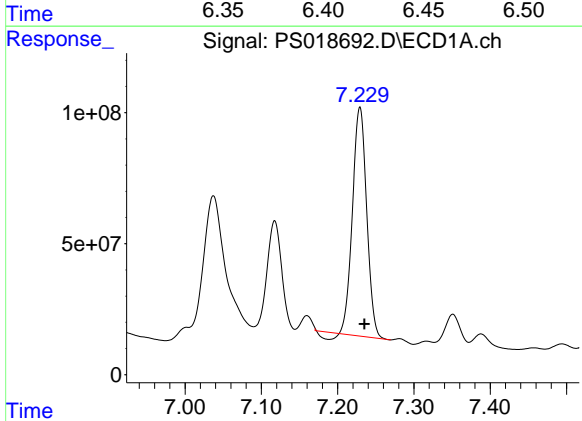
R.T.: 0.000 min
 Exp R.T.: 7.062 min
 Response: 0
 Conc: N.D.

Instrument :
 ECD_S
 ClientSampleId :



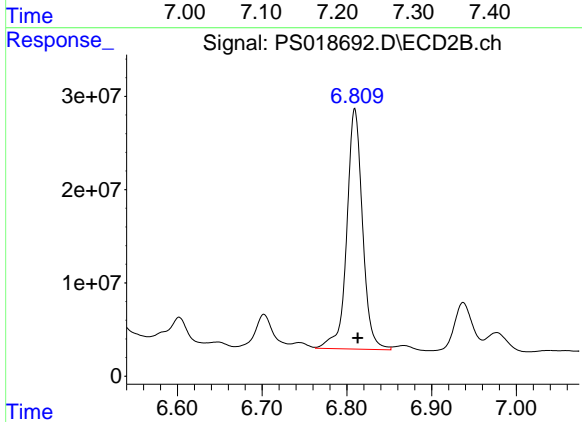
#3 4-Nitrophenol

R.T.: 6.406 min
 Delta R.T.: -0.016 min
 Response: 3583148
 Conc: 8.82 ng/ml



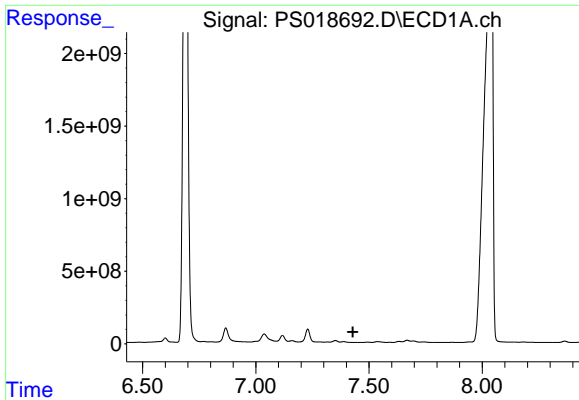
#4 2,4-DCAA

R.T.: 7.229 min
 Delta R.T.: -0.006 min
 Response: 1113486016
 Conc: 391.26 ng/ml



#4 2,4-DCAA

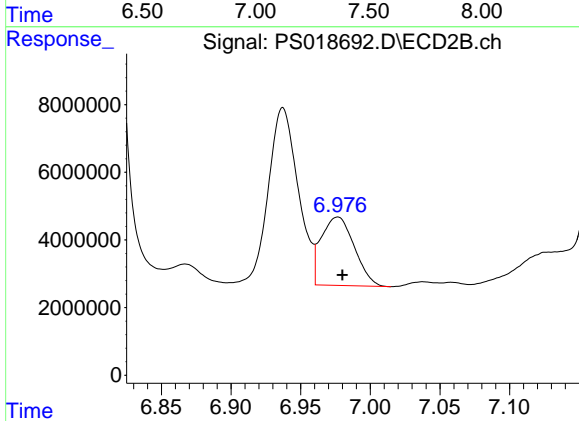
R.T.: 6.809 min
 Delta R.T.: -0.004 min
 Response: 333040965
 Conc: 473.30 ng/ml



#5 DICAMBA

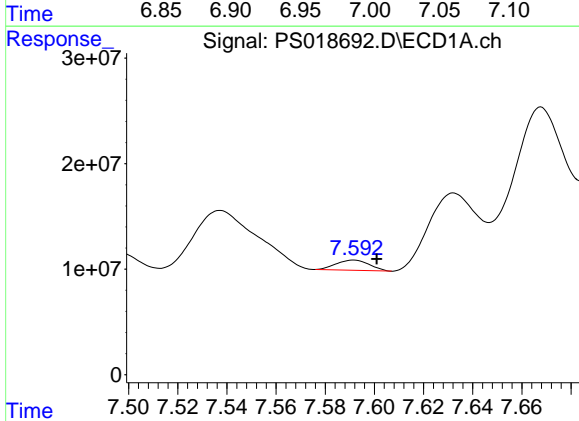
R.T.: 7.457 min
 Delta R.T.: 0.028 min
 Response: -4793084
 Conc: N.D.

Instrument :
 ECD_S
 ClientSampleId :



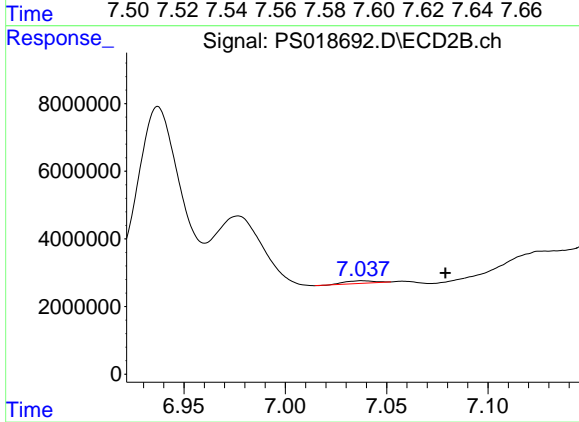
#5 DICAMBA

R.T.: 6.977 min
 Delta R.T.: -0.003 min
 Response: 33370797
 Conc: 11.20 ng/ml



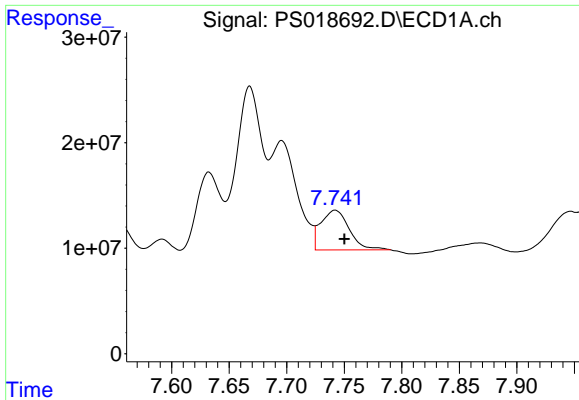
#6 MCPP

R.T.: 7.591 min
 Delta R.T.: -0.010 min
 Response: 9034140
 Conc: 1.06 ug/ml



#6 MCPP

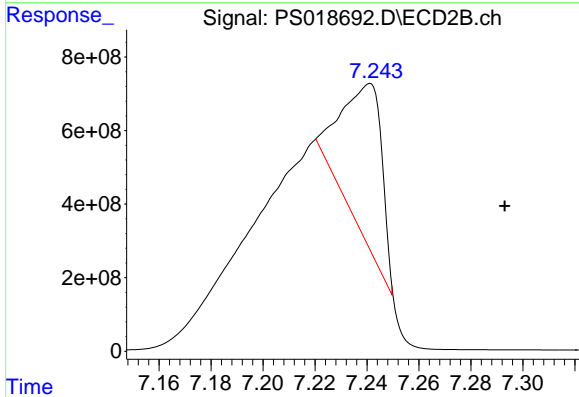
R.T.: 7.038 min
 Delta R.T.: -0.041 min
 Response: 784263
 Conc: N.D.



#7 MCPA

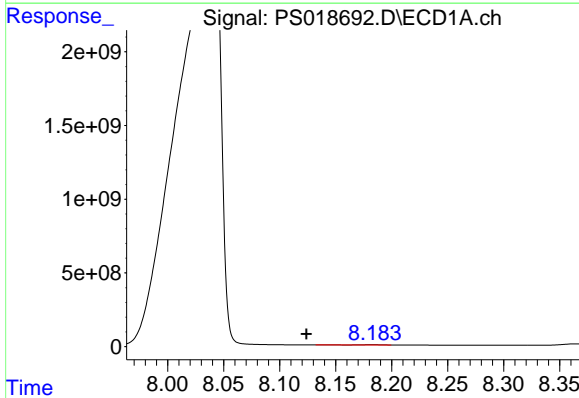
R.T.: 7.742 min
 Delta R.T.: -0.008 min
 Response: 63695305
 Conc: 5.27 ug/ml

Instrument :
 ECD_S
 ClientSampleId :



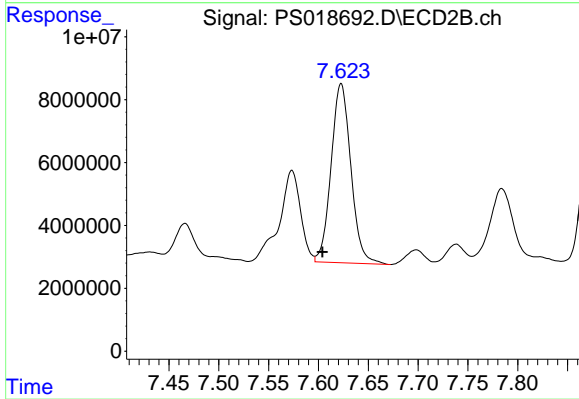
#7 MCPA

R.T.: 7.241 min
 Delta R.T.: -0.052 min
 Response: 4077494306
 Conc: 1167.63 ug/ml



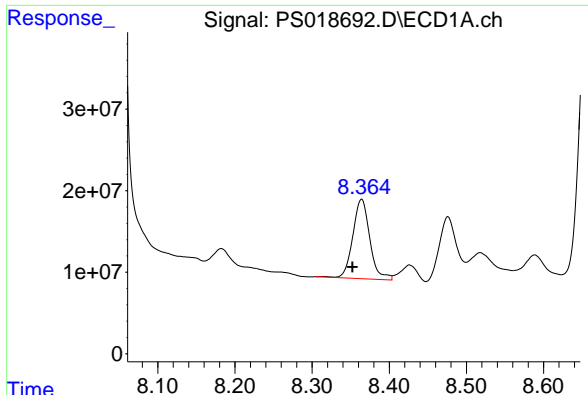
#8 DICHLORPROP

R.T.: 8.182 min
 Delta R.T.: 0.058 min
 Response: 17062449
 Conc: 6.19 ng/ml



#8 DICHLORPROP

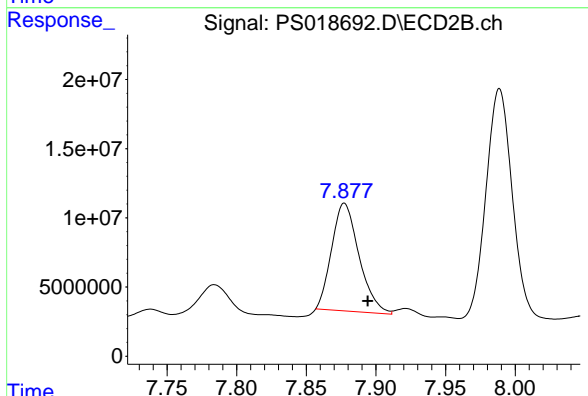
R.T.: 7.623 min
 Delta R.T.: 0.019 min
 Response: 78708371
 Conc: 99.43 ng/ml



#9 2,4-D

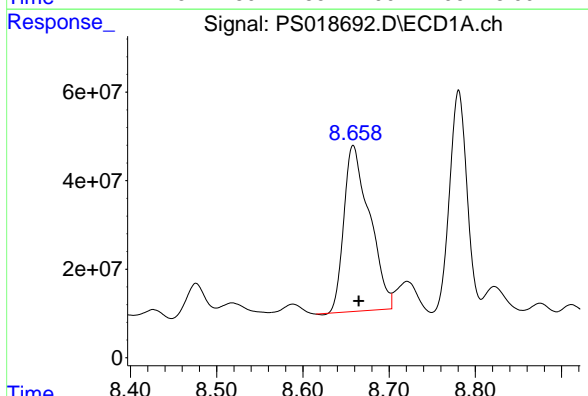
R.T.: 8.364 min
 Delta R.T.: 0.012 min
 Response: 149077151
 Conc: 44.49 ng/ml

Instrument :
 ECD_S
 ClientSampleId :



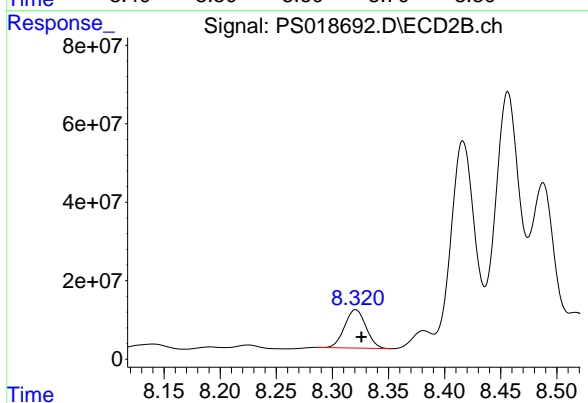
#9 2,4-D

R.T.: 7.877 min
 Delta R.T.: -0.017 min
 Response: 106319296
 Conc: 113.59 ng/ml



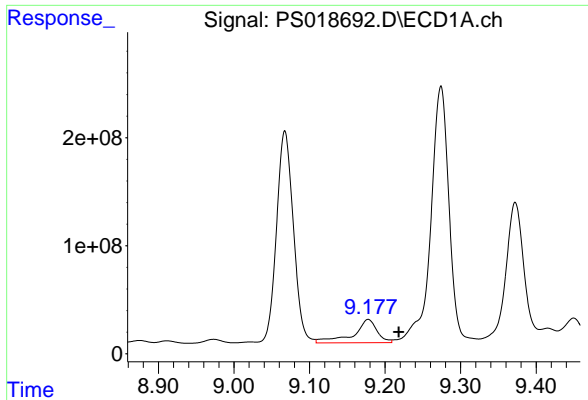
#10 Pentachlorophenol

R.T.: 8.659 min
 Delta R.T.: -0.006 min
 Response: 776009425
 Conc: 21.44 ng/ml



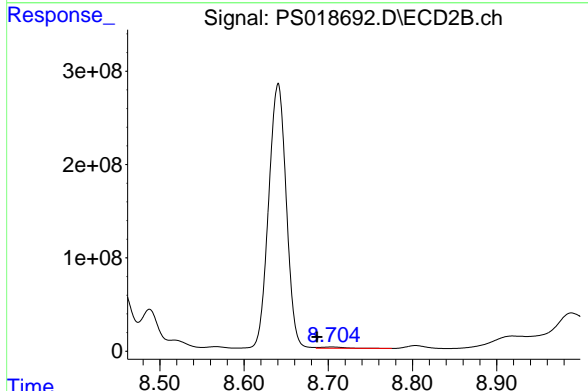
#10 Pentachlorophenol

R.T.: 8.321 min
 Delta R.T.: -0.005 min
 Response: 129454280
 Conc: 13.18 ng/ml

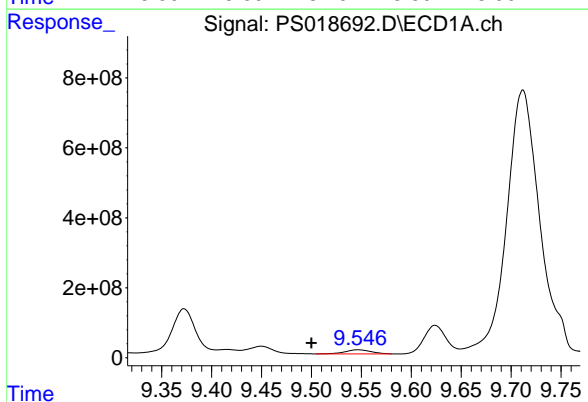


#11 2,4,5-TP (SILVEX)
 R.T.: 9.178 min
 Delta R.T.: -0.040 min
 Response: 473516142
 Conc: 31.14 ng/ml

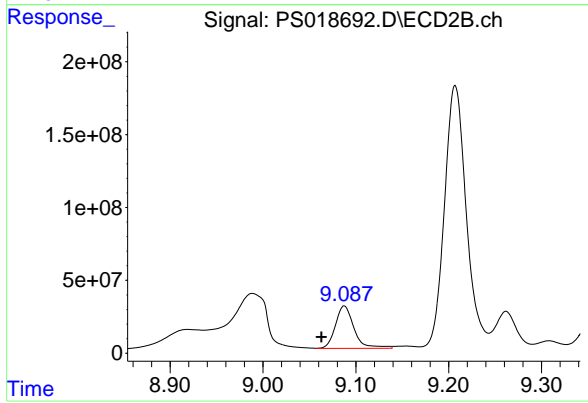
Instrument :
 ECD_S
 ClientSampleId :



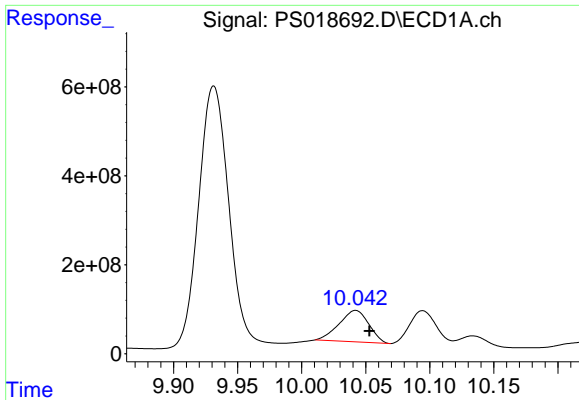
#11 2,4,5-TP (SILVEX)
 R.T.: 8.704 min
 Delta R.T.: 0.017 min
 Response: 30255857
 Conc: 6.94 ng/ml



#12 2,4,5-T
 R.T.: 9.547 min
 Delta R.T.: 0.047 min
 Response: 208763911
 Conc: 13.97 ng/ml



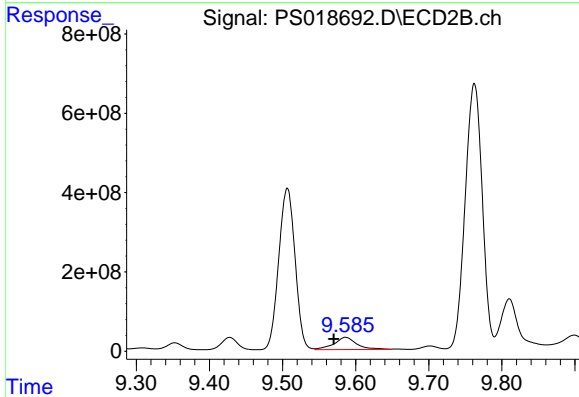
#12 2,4,5-T
 R.T.: 9.088 min
 Delta R.T.: 0.025 min
 Response: 409080718
 Conc: 98.76 ng/ml



#13 2,4-DB

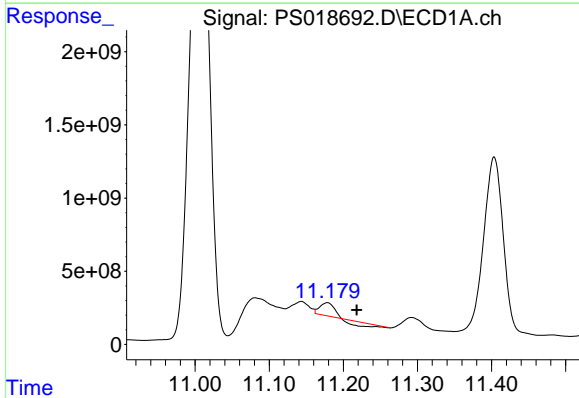
R.T.: 10.042 min
 Delta R.T.: -0.011 min
 Response: 1138542700
 Conc: 416.22 ng/ml

Instrument :
 ECD_S
 ClientSampleId :



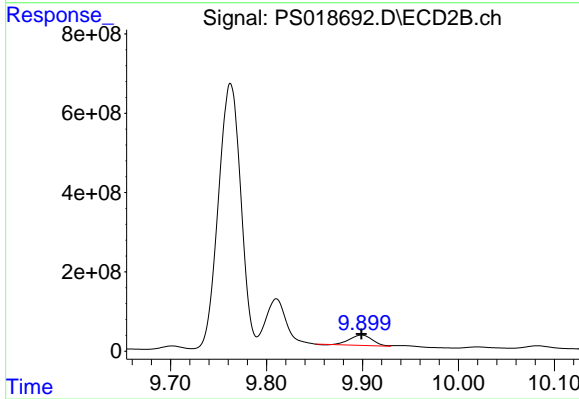
#13 2,4-DB

R.T.: 9.586 min
 Delta R.T.: 0.016 min
 Response: 666705334
 Conc: 1174.30 ng/ml



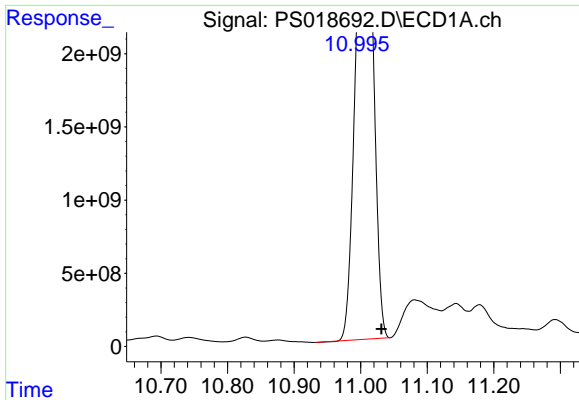
#14 DINOSEB

R.T.: 11.178 min
 Delta R.T.: -0.040 min
 Response: 562570084
 Conc: 52.61 ng/ml



#14 DINOSEB

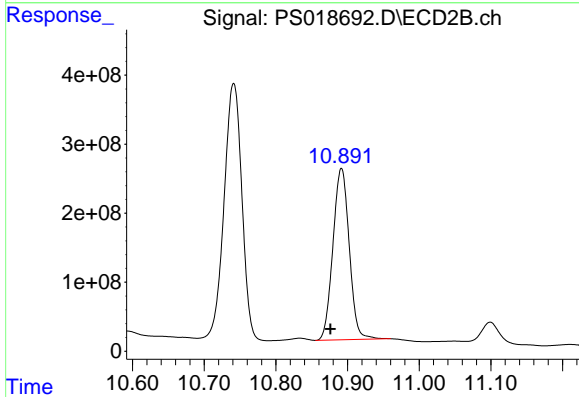
R.T.: 9.899 min
 Delta R.T.: 0.000 min
 Response: 423716422
 Conc: 138.30 ng/ml



#15 Picloram

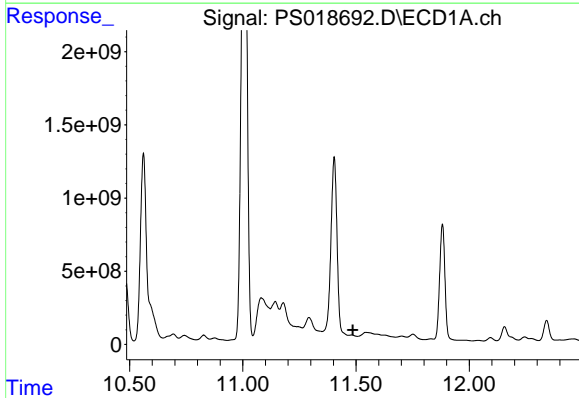
R.T.: 11.011 min
 Delta R.T.: -0.020 min
 Response: 48828970915
 Conc: 2375.44 ng/ml

Instrument :
 ECD_S
 ClientSampleId :



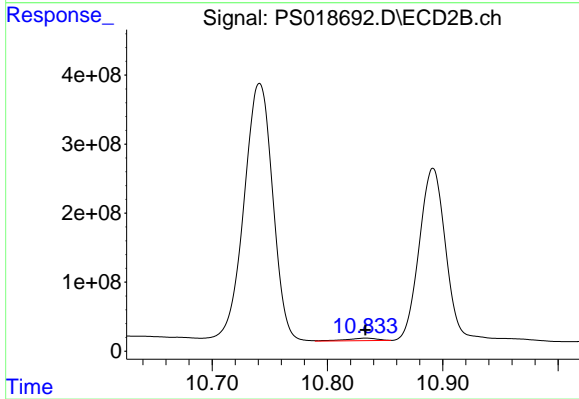
#15 Picloram

R.T.: 10.892 min
 Delta R.T.: 0.016 min
 Response: 3933082391
 Conc: 739.84 ng/ml



#16 DCPA

R.T.: 11.481 min
 Delta R.T.: -0.005 min
 Response: -176238732
 Conc: N.D.



#16 DCPA

R.T.: 10.833 min
 Delta R.T.: 0.000 min
 Response: 68545627
 Conc: 13.03 ng/ml