

Data Path : Z:\pestpcbsrv\HPCHEM1\ECD_S\Data\PS032222\
 Data File : PS018710.D
 Signal(s) : Signal #1: ECD1A.ch Signal #2: ECD2B.ch
 Acq On : 23 Mar 2022 09:18
 Operator : AJ\MA
 Sample : N1908-02MSD
 Misc :
 ALS Vial : 38 Sample Multiplier: 1

Instrument :
 ECD_S
 ClientSampleId :

Integration File signal 1: autoint1.e
 Integration File signal 2: autoint2.e
 Quant Time: Mar 23 14:08:24 2022
 Quant Method : Z:\pestpcbsrv\HPCHEM1\ECD_S\Method\PS031422.M
 Quant Title : 8080.M
 QLast Update : Mon Mar 14 11:41:05 2022
 Response via : Initial Calibration
 Integrator: ChemStation

Volume Inj. : 2 µl
 Signal #1 Phase : Rtx-CLPesticides Signal #2 Phase: Rtx-CLPesticides2
 Signal #1 Info : 30M x 0.32mm x0.5 Signal #2 Info : 30M x 0.32mm x 0.25µm

	Compound	RT#1	RT#2	Resp#1	Resp#2	ng/ml	ng/ml

System Monitoring Compounds							
4) S	2,4-DCAA	7.228	6.808	1480.9E6	412.3E6	520.360	585.915
Target Compounds							
1) T	Dalapon	3.029	2.538	1540.8E6	336.0E6	396.249	406.555
2) T	3,5-DICHL...	6.436	5.982	1855.3E6	578.3E6	481.451	552.824
3) T	4-Nitroph...	7.059	6.419	30576898	24607813	17.745	60.569 #
5) T	DICAMBA	7.420	6.976	4995.2E6	1442.8E6	457.990	484.395
6) T	MCP P	7.590	7.073	409.8E6	122.7E6	48.278	50.109
7) T	MCPA	7.738	7.285	562.0E6	161.4E6	46.472	46.215
8) T	DICHLORPROP	8.115	7.599	1339.7E6	405.1E6	486.400	511.765
9) T	2,4-D	8.343	7.889	1647.0E6	505.1E6	491.544	539.642
10) T	Pentachlo...	8.655	8.320	19251.5E6	5208.6E6	531.772	530.392
11) T	2,4,5-TP ...	9.207	8.681	8012.0E6	2253.2E6	526.822	516.550
12) T	2,4,5-T	9.491	9.057	7423.2E6	2043.5E6	496.912	493.337
13) T	2,4-DB	10.045	9.565	978.1E6	285.8E6	357.568	503.459 #
14) T	DINOSEB	11.208	9.894	5207.3E6	1325.5E6	486.972	432.640
15) T	Picloram	11.023	10.872	9964.1E6	2434.0E6	484.733	457.853
16) T	DCPA	11.477	10.827	9135.6E6	2660.8E6	510.629	505.925

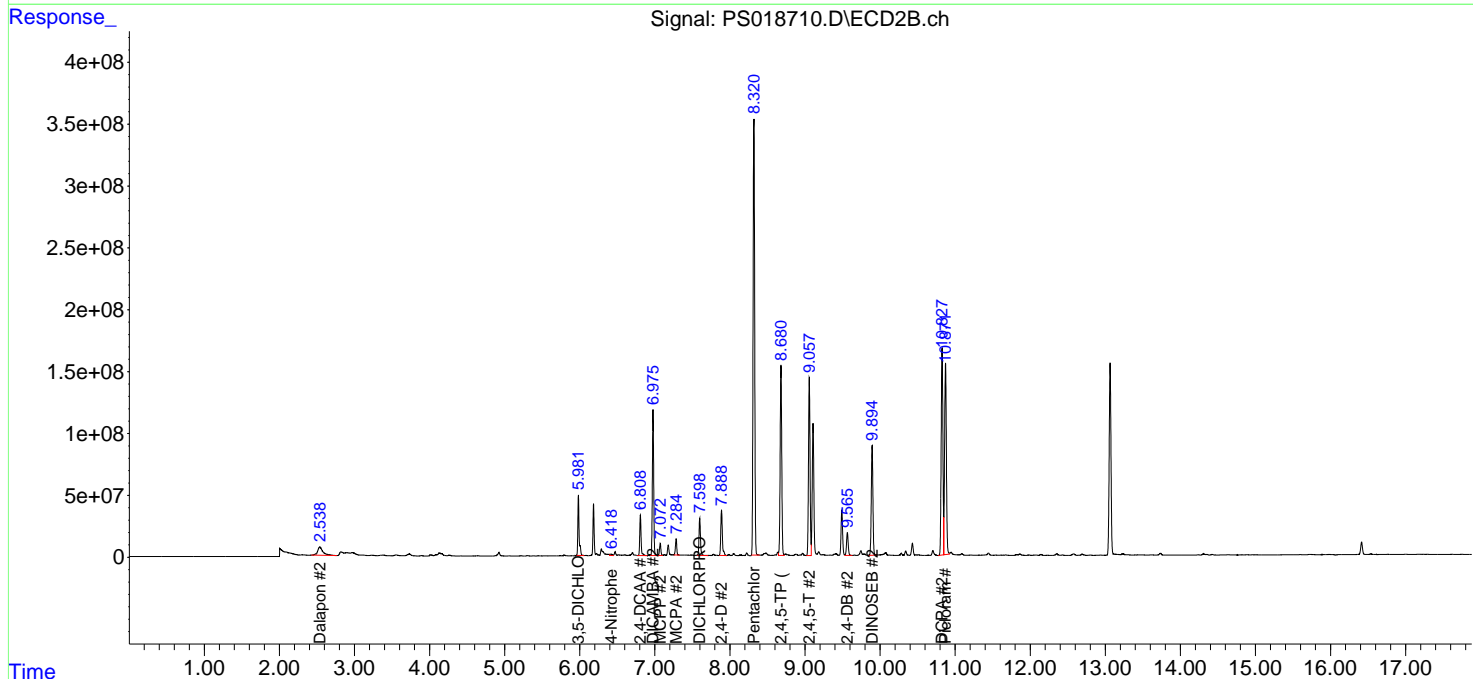
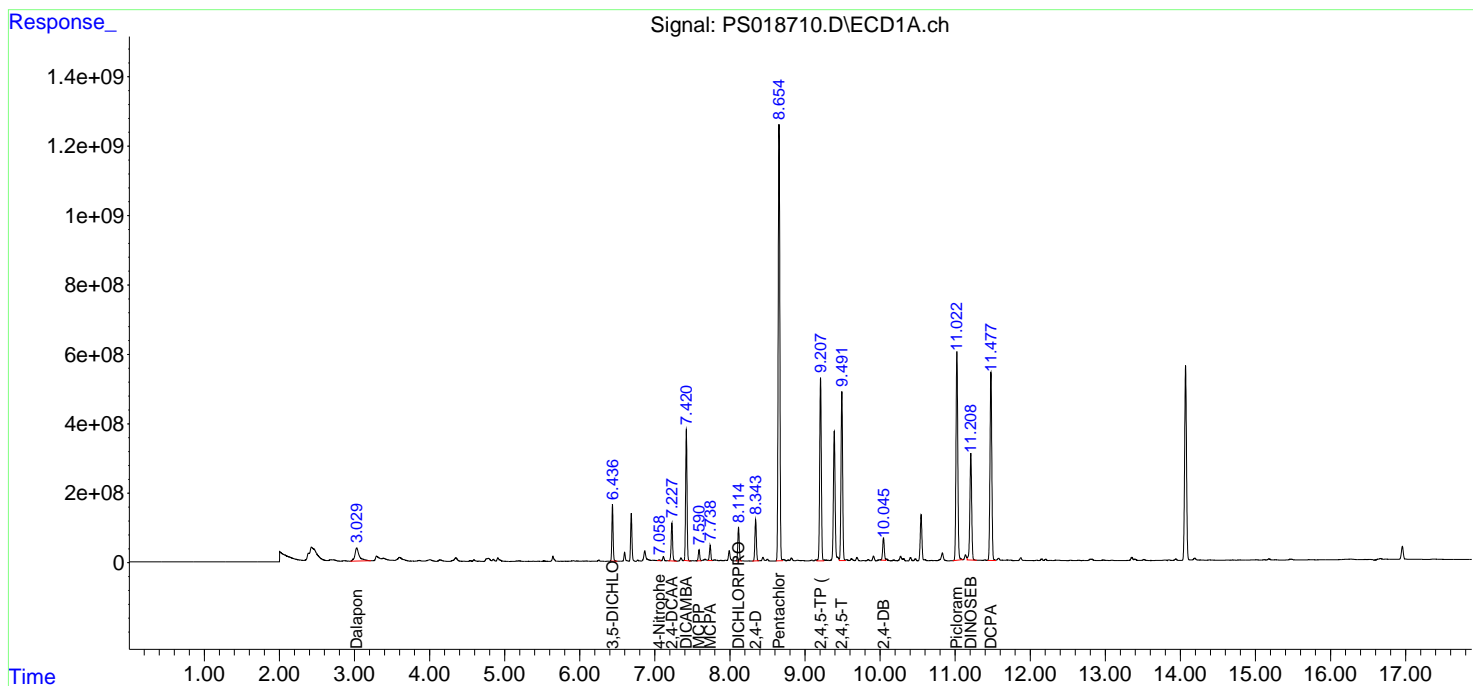
(f)=RT Delta > 1/2 Window (#)=Amounts differ by > 25% (m)=manual int.

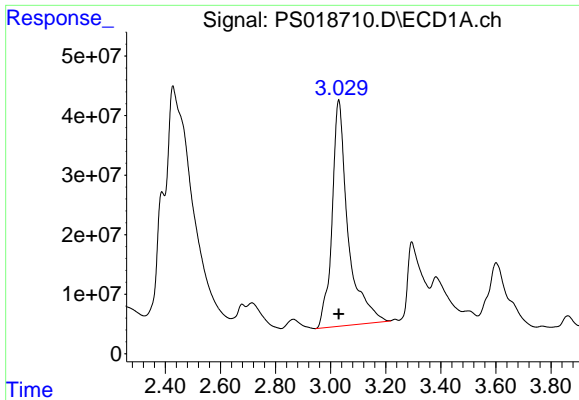
Data Path : Z:\pestpcbsrv\HPCHEM1\ECD_S\Data\PS032222\
 Data File : PS018710.D
 Signal(s) : Signal #1: ECD1A.ch Signal #2: ECD2B.ch
 Acq On : 23 Mar 2022 09:18
 Operator : AJ\MA
 Sample : N1908-02MSD
 Misc :
 ALS Vial : 38 Sample Multiplier: 1

Instrument :
 ECD_S
 ClientSampleId :

Integration File signal 1: autoint1.e
 Integration File signal 2: autoint2.e
 Quant Time: Mar 23 14:08:24 2022
 Quant Method : Z:\pestpcbsrv\HPCHEM1\ECD_S\Method\PS031422.M
 Quant Title : 8080.M
 QLast Update : Mon Mar 14 11:41:05 2022
 Response via : Initial Calibration
 Integrator: ChemStation

Volume Inj. : 2 µl
 Signal #1 Phase : Rtx-CLPesticides Signal #2 Phase: Rtx-CLPesticides2
 Signal #1 Info : 30M x 0.32mm x0.5 Signal #2 Info : 30M x 0.32mm x 0.25µm

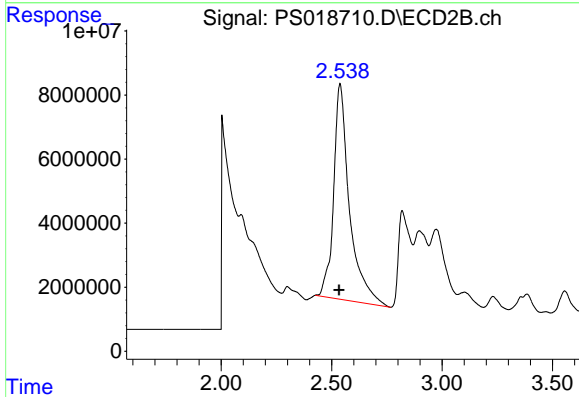




#1 Dalapon

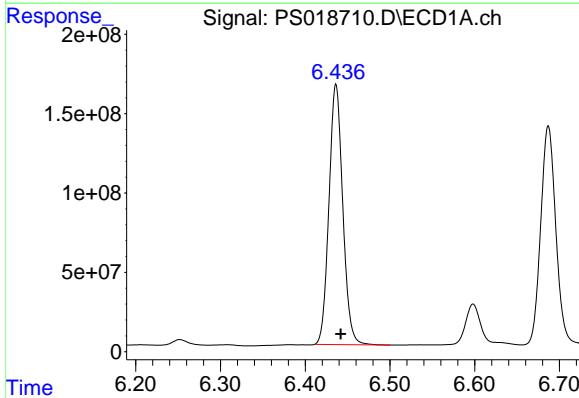
R.T.: 3.029 min
 Delta R.T.: 0.000 min
 Response: 1540813248
 Conc: 396.25 ng/ml

Instrument :
 ECD_S
 ClientSampleId :



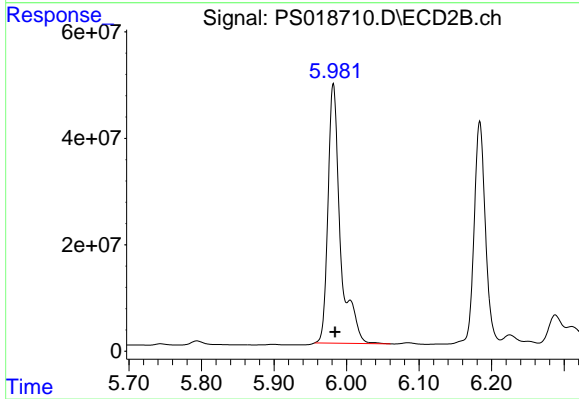
#1 Dalapon

R.T.: 2.538 min
 Delta R.T.: 0.005 min
 Response: 336004074
 Conc: 406.55 ng/ml



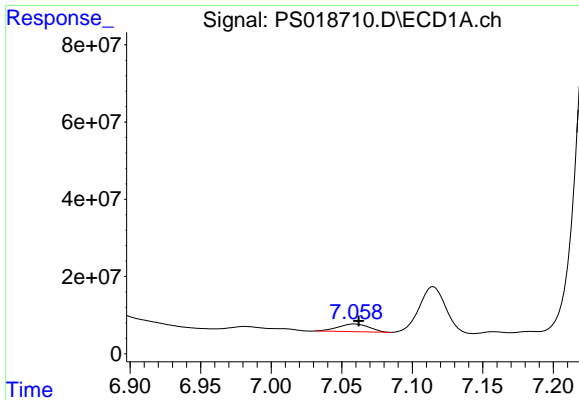
#2 3,5-DICHLOROBENZOIC ACID

R.T.: 6.436 min
 Delta R.T.: -0.006 min
 Response: 1855299742
 Conc: 481.45 ng/ml



#2 3,5-DICHLOROBENZOIC ACID

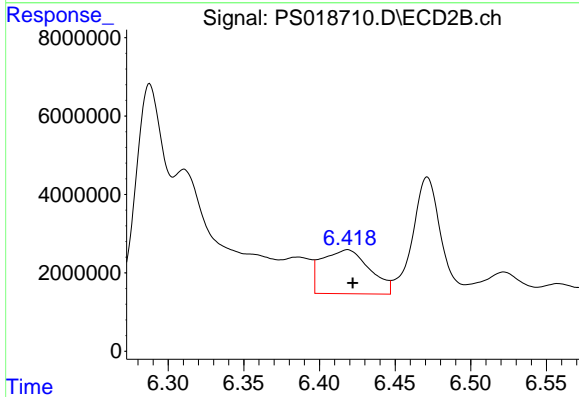
R.T.: 5.982 min
 Delta R.T.: -0.002 min
 Response: 578317706
 Conc: 552.82 ng/ml



#3 4-Nitrophenol

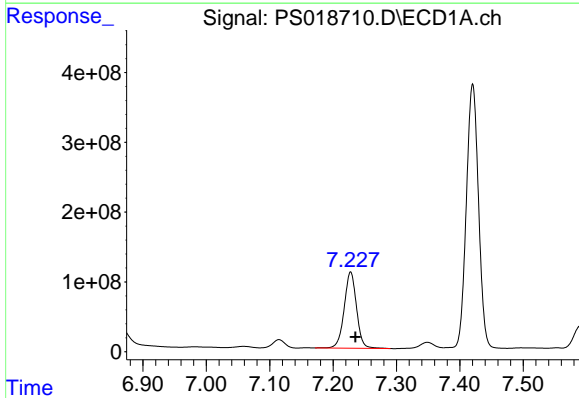
R.T.: 7.059 min
 Delta R.T.: -0.003 min
 Response: 30576898
 Conc: 17.75 ng/ml

Instrument :
 ECD_S
 ClientSampleId :



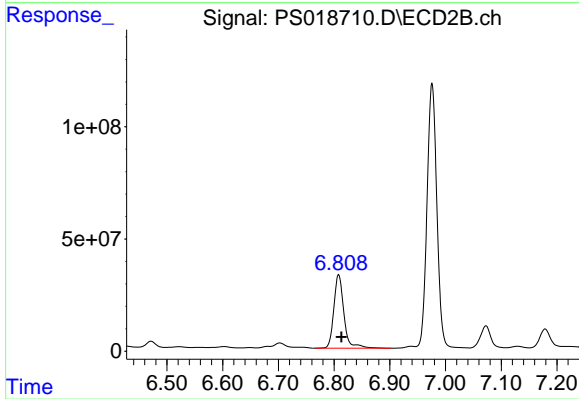
#3 4-Nitrophenol

R.T.: 6.419 min
 Delta R.T.: -0.003 min
 Response: 24607813
 Conc: 60.57 ng/ml



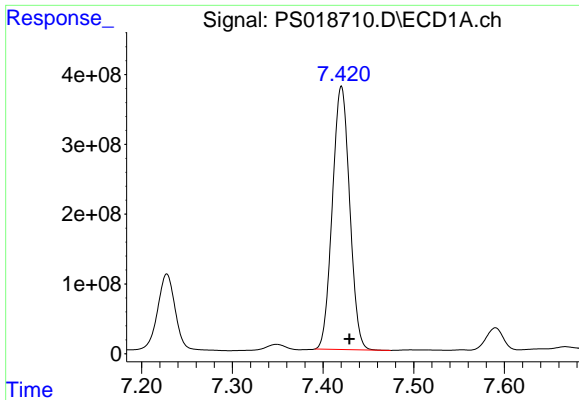
#4 2,4-DCAA

R.T.: 7.228 min
 Delta R.T.: -0.007 min
 Response: 1480902082
 Conc: 520.36 ng/ml



#4 2,4-DCAA

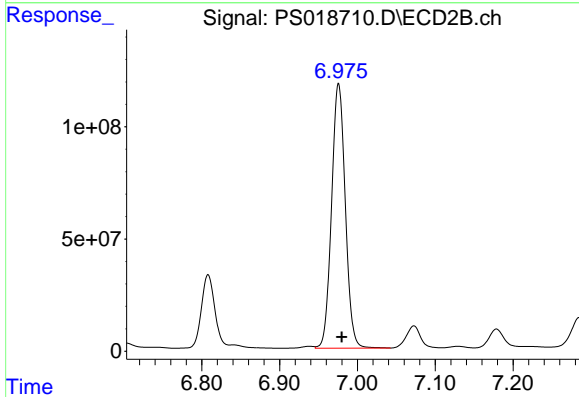
R.T.: 6.808 min
 Delta R.T.: -0.005 min
 Response: 412281694
 Conc: 585.91 ng/ml



#5 DICAMBA

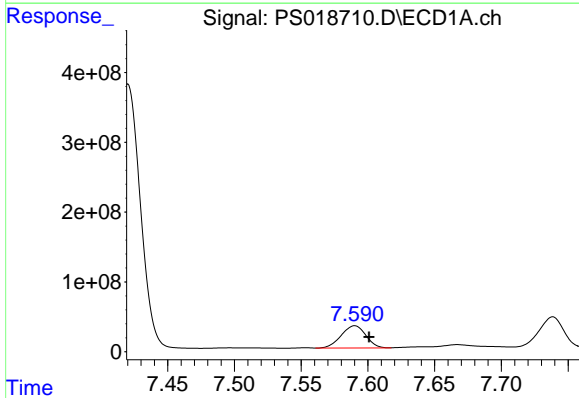
R.T.: 7.420 min
 Delta R.T.: -0.009 min
 Response: 4995172341
 Conc: 457.99 ng/ml

Instrument :
 ECD_S
 ClientSampleId :



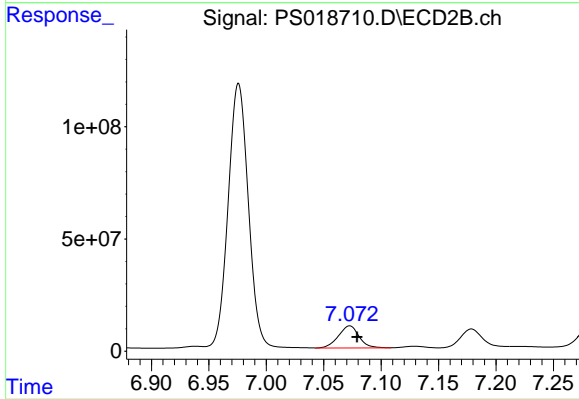
#5 DICAMBA

R.T.: 6.976 min
 Delta R.T.: -0.004 min
 Response: 1442795987
 Conc: 484.40 ng/ml



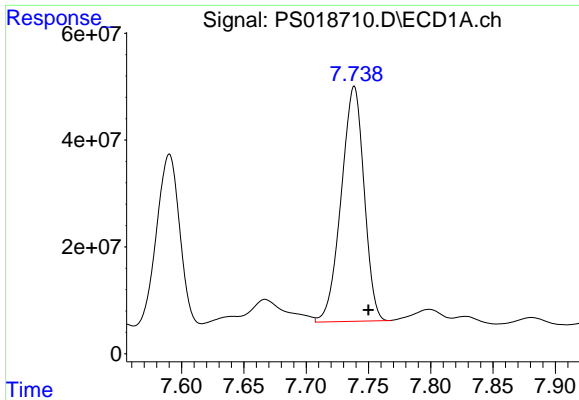
#6 MCP

R.T.: 7.590 min
 Delta R.T.: -0.011 min
 Response: 409808217
 Conc: 48.28 ug/ml



#6 MCP

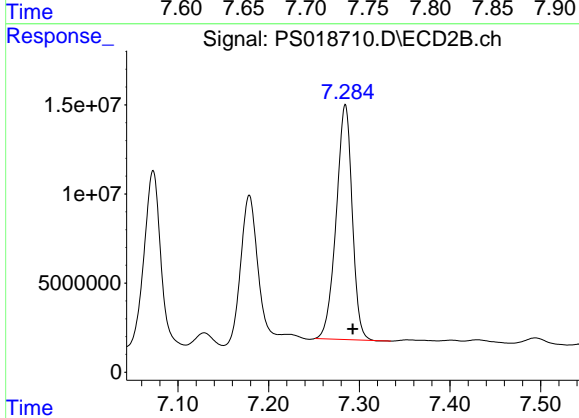
R.T.: 7.073 min
 Delta R.T.: -0.006 min
 Response: 122671199
 Conc: 50.11 ug/ml



#7 MCPA

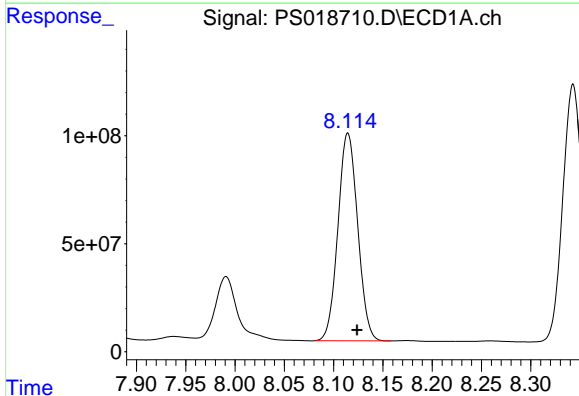
R.T.: 7.738 min
 Delta R.T.: -0.012 min
 Response: 562045608
 Conc: 46.47 ug/ml

Instrument :
 ECD_S
 ClientSampleId :



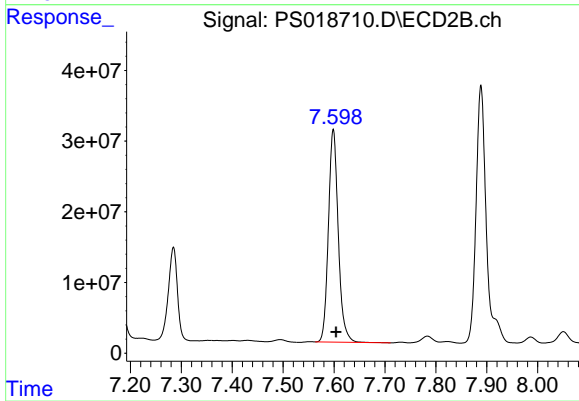
#7 MCPA

R.T.: 7.285 min
 Delta R.T.: -0.008 min
 Response: 161386937
 Conc: 46.21 ug/ml



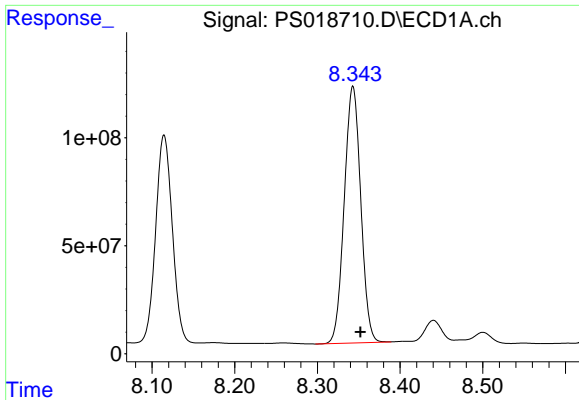
#8 DICHLORPROP

R.T.: 8.115 min
 Delta R.T.: -0.009 min
 Response: 1339736480
 Conc: 486.40 ng/ml



#8 DICHLORPROP

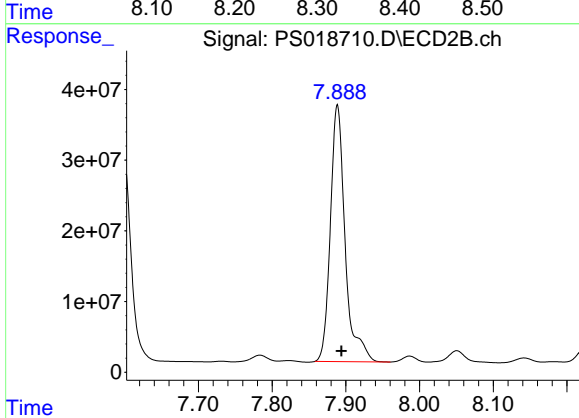
R.T.: 7.599 min
 Delta R.T.: -0.005 min
 Response: 405119581
 Conc: 511.76 ng/ml



#9 2,4-D

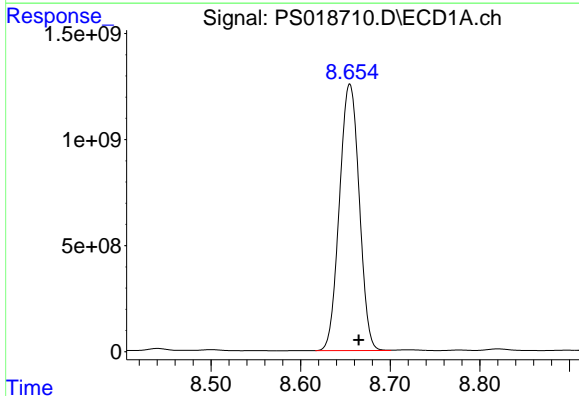
R.T.: 8.343 min
 Delta R.T.: -0.009 min
 Response: 1646981305
 Conc: 491.54 ng/ml

Instrument :
 ECD_S
 ClientSampleId :



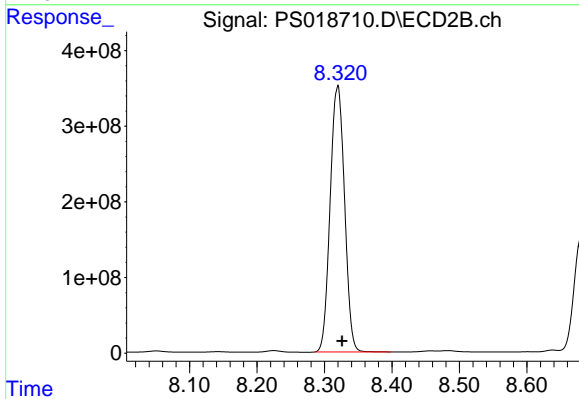
#9 2,4-D

R.T.: 7.889 min
 Delta R.T.: -0.005 min
 Response: 505113205
 Conc: 539.64 ng/ml



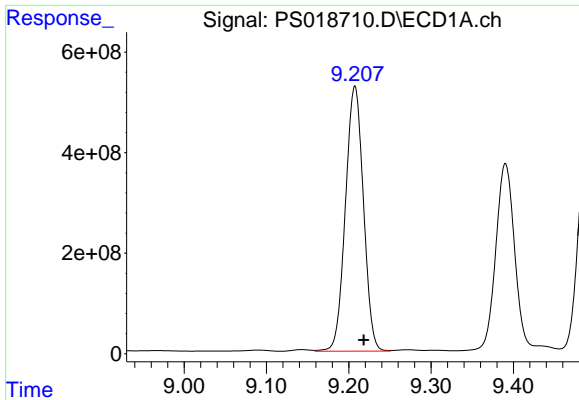
#10 Pentachlorophenol

R.T.: 8.655 min
 Delta R.T.: -0.010 min
 Response: 19251526752
 Conc: 531.77 ng/ml



#10 Pentachlorophenol

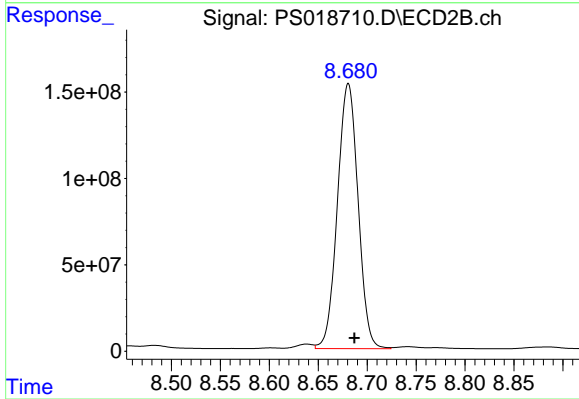
R.T.: 8.320 min
 Delta R.T.: -0.006 min
 Response: 5208614141
 Conc: 530.39 ng/ml



#11 2,4,5-TP (SILVEX)

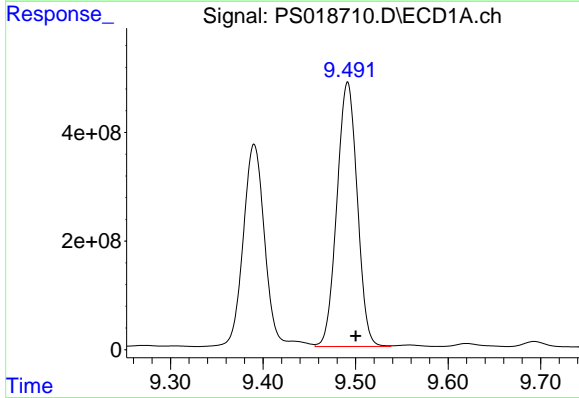
R.T.: 9.207 min
 Delta R.T.: -0.011 min
 Response: 8012016530
 Conc: 526.82 ng/ml

Instrument :
 ECD_S
 ClientSampleId :



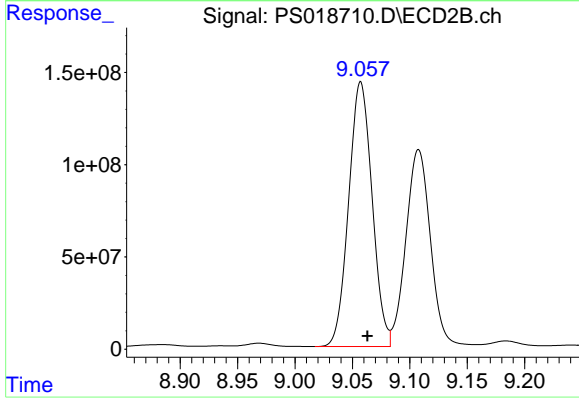
#11 2,4,5-TP (SILVEX)

R.T.: 8.681 min
 Delta R.T.: -0.006 min
 Response: 2253188421
 Conc: 516.55 ng/ml



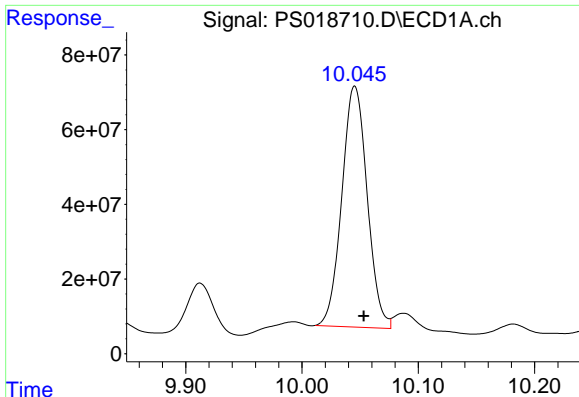
#12 2,4,5-T

R.T.: 9.491 min
 Delta R.T.: -0.009 min
 Response: 7423234534
 Conc: 496.91 ng/ml



#12 2,4,5-T

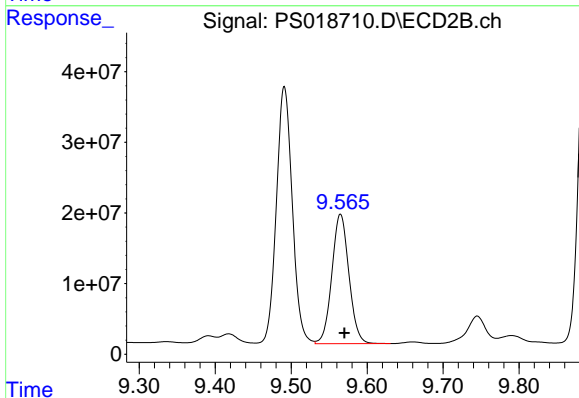
R.T.: 9.057 min
 Delta R.T.: -0.006 min
 Response: 2043495971
 Conc: 493.34 ng/ml



#13 2,4-DB

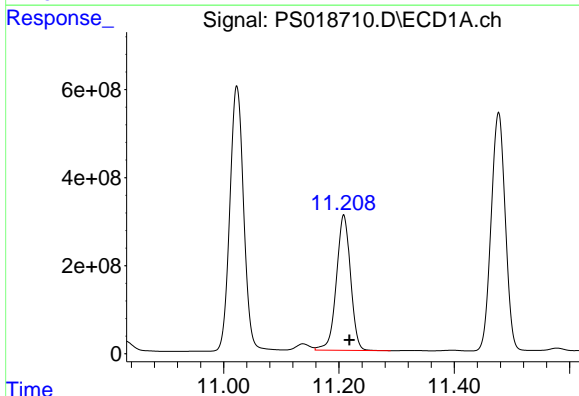
R.T.: 10.045 min
 Delta R.T.: -0.008 min
 Response: 978094227
 Conc: 357.57 ng/ml

Instrument :
 ECD_S
 ClientSampleId :



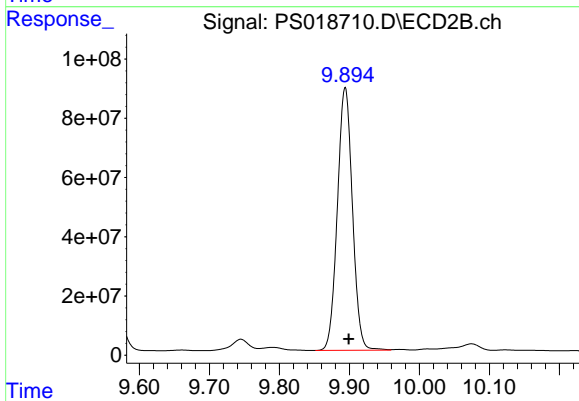
#13 2,4-DB

R.T.: 9.565 min
 Delta R.T.: -0.005 min
 Response: 285837785
 Conc: 503.46 ng/ml



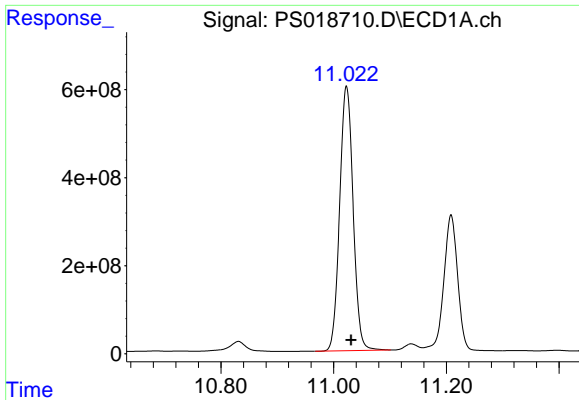
#14 DINOSEB

R.T.: 11.208 min
 Delta R.T.: -0.010 min
 Response: 5207252955
 Conc: 486.97 ng/ml



#14 DINOSEB

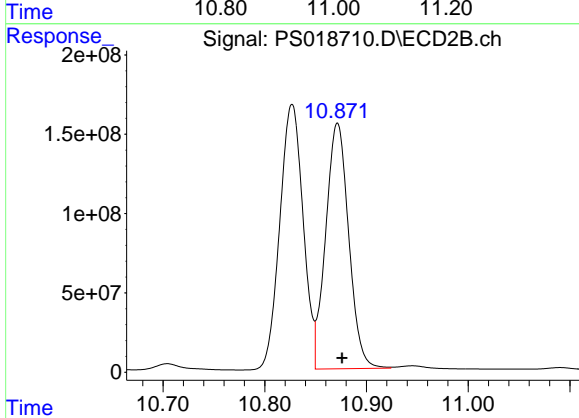
R.T.: 9.894 min
 Delta R.T.: -0.005 min
 Response: 1325539425
 Conc: 432.64 ng/ml



#15 Picloram

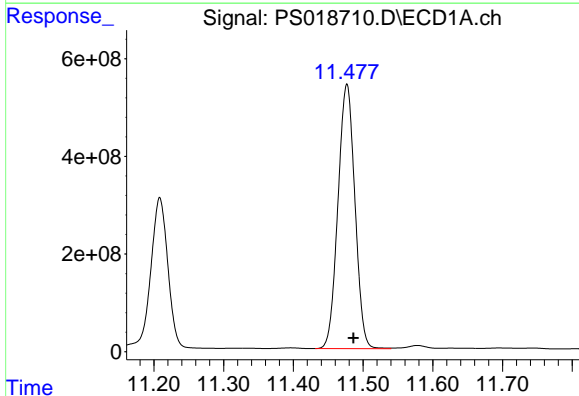
R.T.: 11.023 min
 Delta R.T.: -0.008 min
 Response: 9964052453
 Conc: 484.73 ng/ml

Instrument :
 ECD_S
 ClientSampleId :



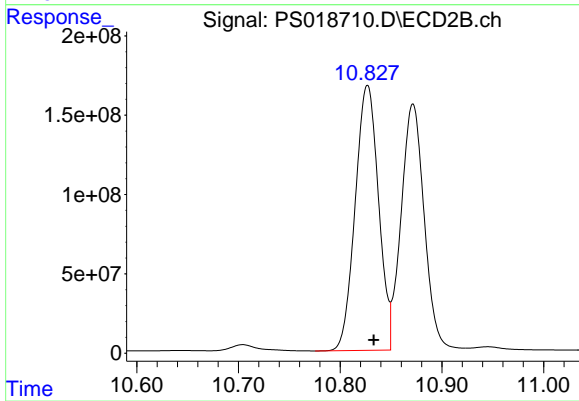
#15 Picloram

R.T.: 10.872 min
 Delta R.T.: -0.004 min
 Response: 2433989362
 Conc: 457.85 ng/ml



#16 DCPA

R.T.: 11.477 min
 Delta R.T.: -0.009 min
 Response: 9135552543
 Conc: 510.63 ng/ml



#16 DCPA

R.T.: 10.827 min
 Delta R.T.: -0.006 min
 Response: 2660801114
 Conc: 505.93 ng/ml