

Data Path : Z:\pestpcbsrv\HPCHEM1\ECD_S\Data\PS032222\
 Data File : PS018720.D
 Signal(s) : Signal #1: ECD1A.ch Signal #2: ECD2B.ch
 Acq On : 23 Mar 2022 14:03
 Operator : AJ\MA
 Sample : HSTDCCC750
 Misc :
 ALS Vial : 3 Sample Multiplier: 1

Instrument :
 ECD_S
 ClientSampleId :

Integration File signal 1: autoint1.e
 Integration File signal 2: autoint2.e
 Quant Time: Mar 23 14:21:32 2022
 Quant Method : Z:\pestpcbsrv\HPCHEM1\ECD_S\Method\PS031422.M
 Quant Title : 8080.M
 QLast Update : Mon Mar 14 11:41:05 2022
 Response via : Initial Calibration
 Integrator: ChemStation

Volume Inj. : 2 µl
 Signal #1 Phase : Rtx-CLPesticides Signal #2 Phase: Rtx-CLPesticides2
 Signal #1 Info : 30M x 0.32mm x0.5 Signal #2 Info : 30M x 0.32mm x 0.25µm

	Compound	RT#1	RT#2	Resp#1	Resp#2	ng/ml	ng/ml

System Monitoring Compounds							
4) S	2,4-DCAA	7.227	6.808	2129.6E6	546.4E6	748.314	776.489
Target Compounds							
1) T	Dalapon	3.030	2.532	2574.2E6	574.9E6	662.013	695.558
2) T	3,5-DICHL...	6.436	5.981	2691.1E6	750.5E6	698.335	717.399
3) T	4-Nitroph...	7.054	6.419	1063.4E6	276.2E6	617.154	679.844
5) T	DICAMBA	7.420	6.976	7745.4E6	2171.0E6	710.146	728.885
6) T	MCP P	7.592	7.074	608.9E6	172.3E6	71.728	70.370
7) T	MCPA	7.742	7.288	857.4E6	248.2E6	70.893	71.064
8) T	DICHLORPROP	8.115	7.598	1975.0E6	578.1E6	717.031	730.283
9) T	2,4-D	8.343	7.889	2409.8E6	674.3E6	719.197	720.353
10) T	Pentachlo...	8.655	8.320	26913.5E6	7085.5E6	743.413	721.512
11) T	2,4,5-TP ...	9.207	8.681	11285.4E6	3140.2E6	742.060	719.891
12) T	2,4,5-T	9.491	9.058	11265.6E6	2972.5E6	754.118	717.625
13) T	2,4-DB	10.043	9.565	2054.8E6	399.8E6	751.180	704.195
14) T	DINOSEB	11.209	9.894	8299.9E6	2168.1E6	776.188	707.626
15) T	Picloram	11.024	10.872	15819.8E6	3815.7E6	769.605	717.764
16) T	DCPA	11.476	10.827	14122.2E6	3795.1E6	789.355	721.592

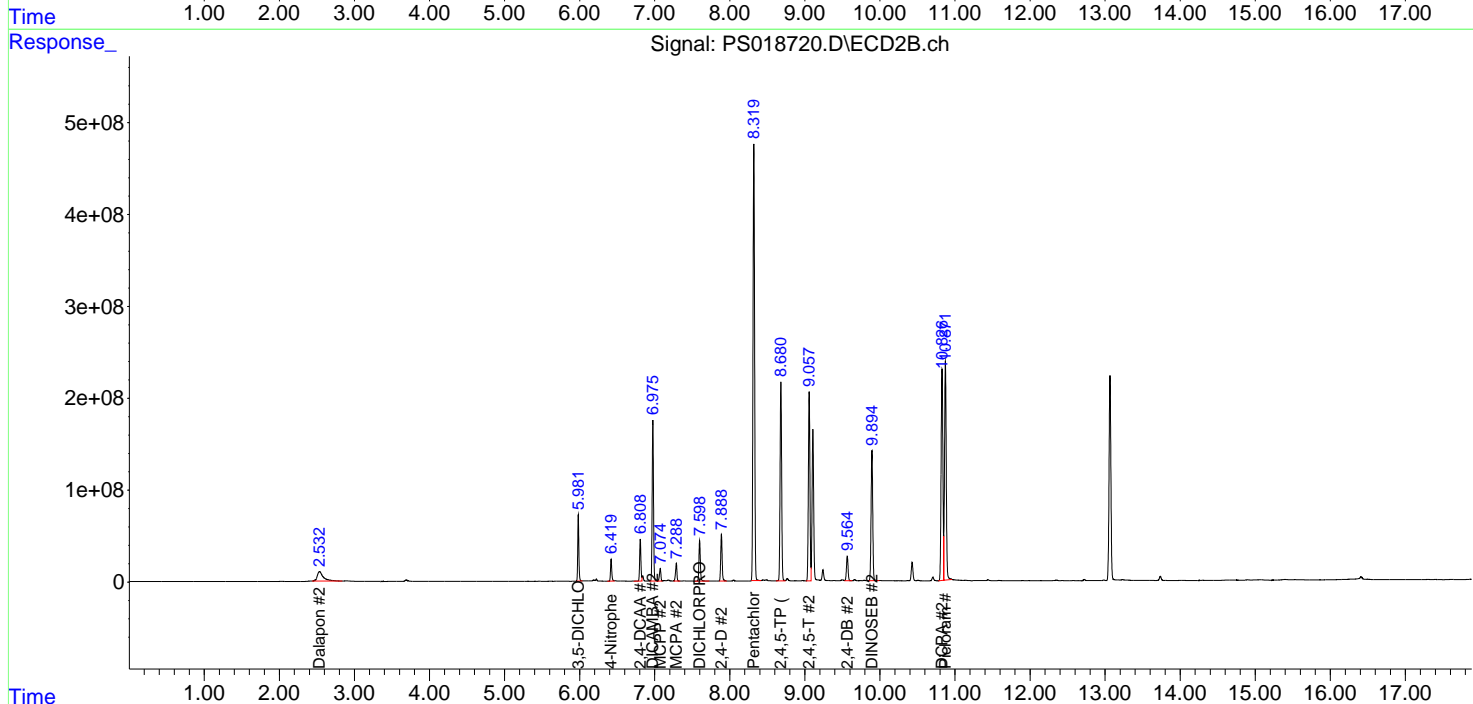
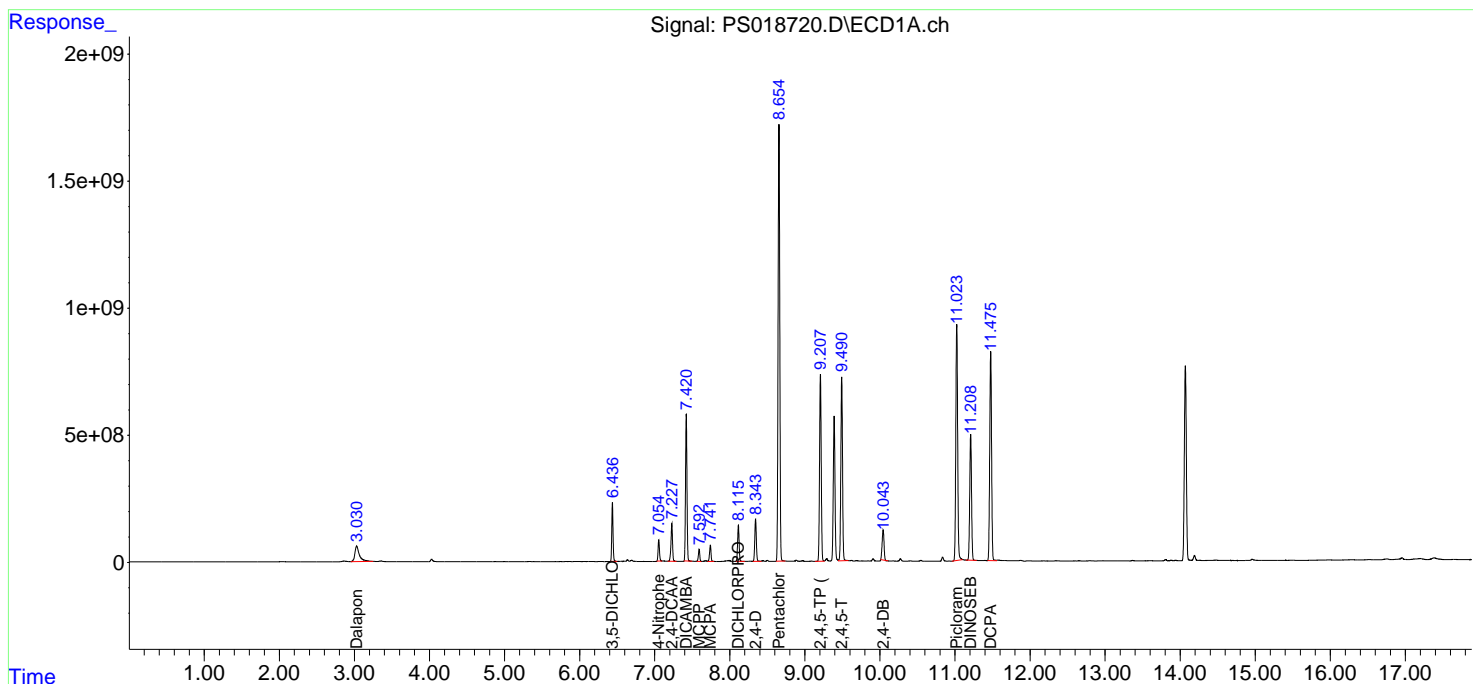
(f)=RT Delta > 1/2 Window (#)=Amounts differ by > 25% (m)=manual int.

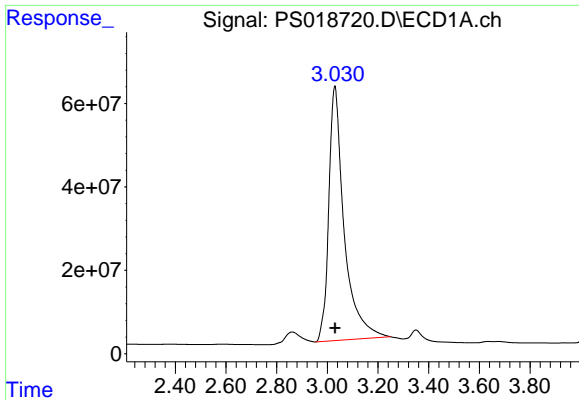
Data Path : Z:\pestpcbsrv\HPCHEM1\ECD_S\Data\PS032222\
 Data File : PS018720.D
 Signal(s) : Signal #1: ECD1A.ch Signal #2: ECD2B.ch
 Acq On : 23 Mar 2022 14:03
 Operator : AJ\MA
 Sample : HSTDCCC750
 Misc :
 ALS Vial : 3 Sample Multiplier: 1

Instrument :
 ECD_S
 ClientSampleId :

Integration File signal 1: autoint1.e
 Integration File signal 2: autoint2.e
 Quant Time: Mar 23 14:21:32 2022
 Quant Method : Z:\pestpcbsrv\HPCHEM1\ECD_S\Method\PS031422.M
 Quant Title : 8080.M
 QLast Update : Mon Mar 14 11:41:05 2022
 Response via : Initial Calibration
 Integrator: ChemStation

Volume Inj. : 2 µl
 Signal #1 Phase : Rtx-CLPesticides Signal #2 Phase: Rtx-CLPesticides2
 Signal #1 Info : 30M x 0.32mm x0.5 Signal #2 Info : 30M x 0.32mm x 0.25µm

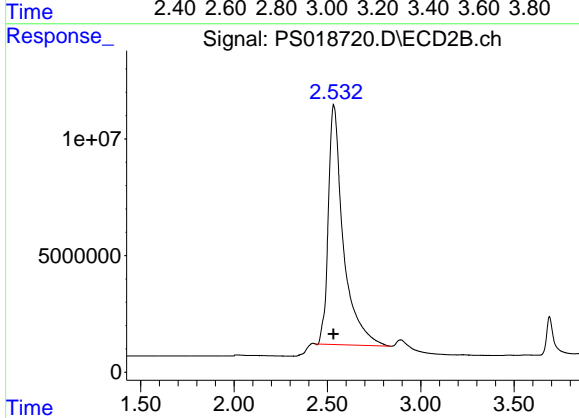




#1 Dalapon

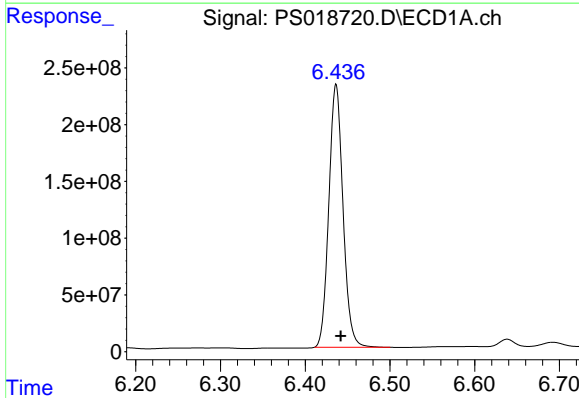
R.T.: 3.030 min
 Delta R.T.: 0.000 min
 Response: 2574234957
 Conc: 662.01 ng/ml

Instrument :
 ECD_S
 ClientSampleId :



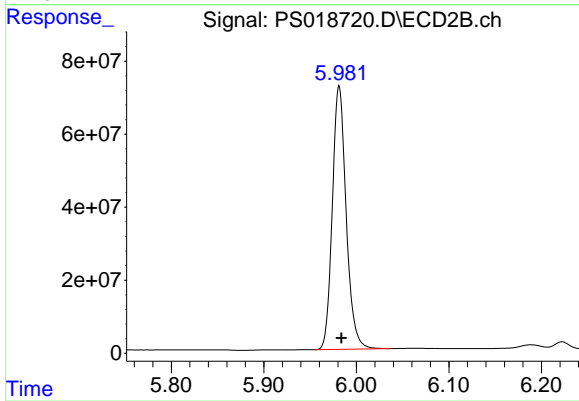
#1 Dalapon

R.T.: 2.532 min
 Delta R.T.: 0.000 min
 Response: 574855782
 Conc: 695.56 ng/ml



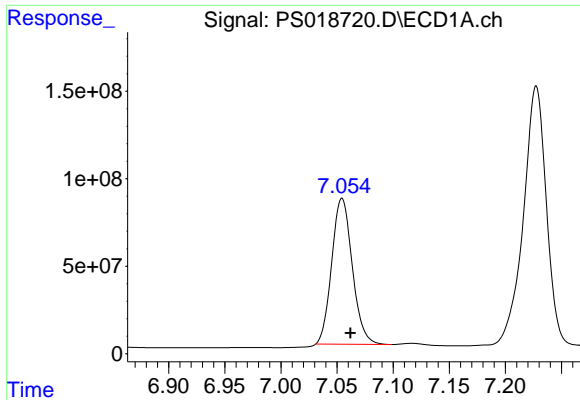
#2 3,5-DICHLOROBENZOIC ACID

R.T.: 6.436 min
 Delta R.T.: -0.006 min
 Response: 2691073216
 Conc: 698.33 ng/ml



#2 3,5-DICHLOROBENZOIC ACID

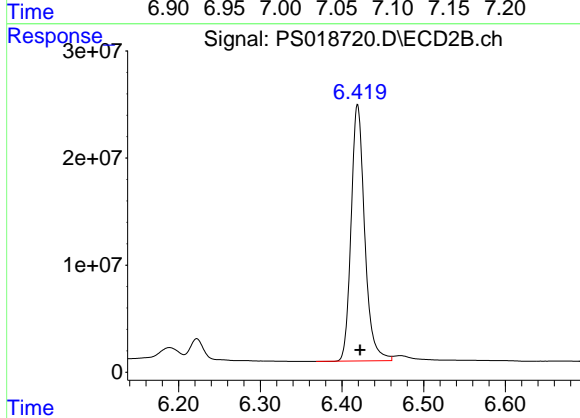
R.T.: 5.981 min
 Delta R.T.: -0.003 min
 Response: 750481755
 Conc: 717.40 ng/ml



#3 4-Nitrophenol

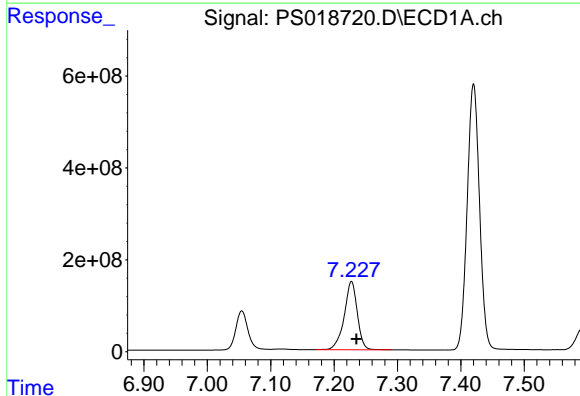
R.T.: 7.054 min
 Delta R.T.: -0.008 min
 Response: 1063426714
 Conc: 617.15 ng/ml

Instrument :
 ECD_S
 ClientSampleId :



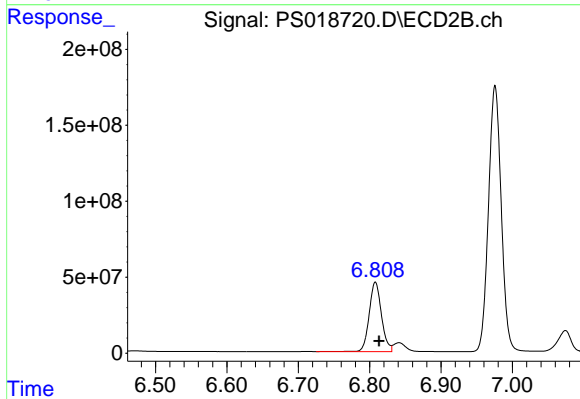
#3 4-Nitrophenol

R.T.: 6.419 min
 Delta R.T.: -0.003 min
 Response: 276203572
 Conc: 679.84 ng/ml



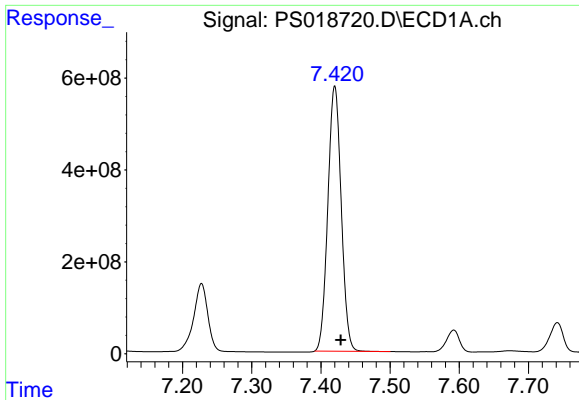
#4 2,4-DCAA

R.T.: 7.227 min
 Delta R.T.: -0.008 min
 Response: 2129639112
 Conc: 748.31 ng/ml



#4 2,4-DCAA

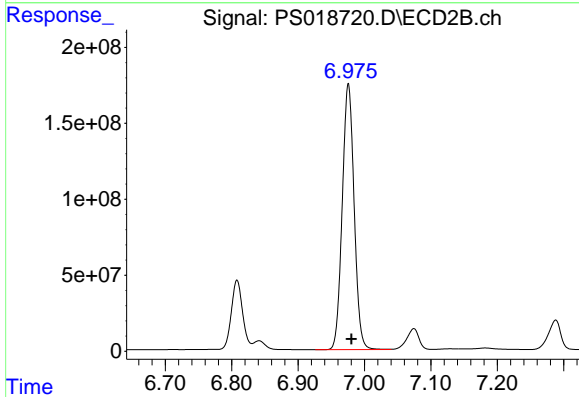
R.T.: 6.808 min
 Delta R.T.: -0.005 min
 Response: 546380135
 Conc: 776.49 ng/ml



#5 DICAMBA

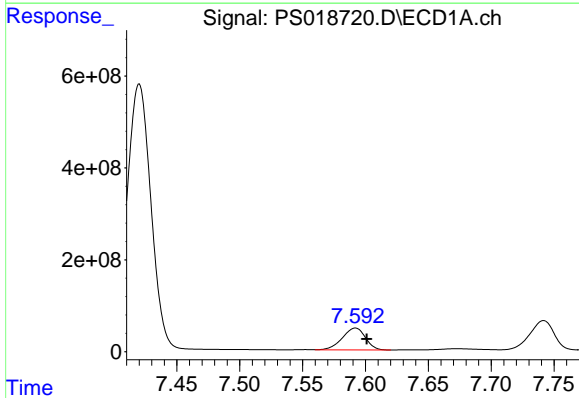
R.T.: 7.420 min
 Delta R.T.: -0.009 min
 Response: 7745372367
 Conc: 710.15 ng/ml

Instrument :
 ECD_S
 ClientSampleId :



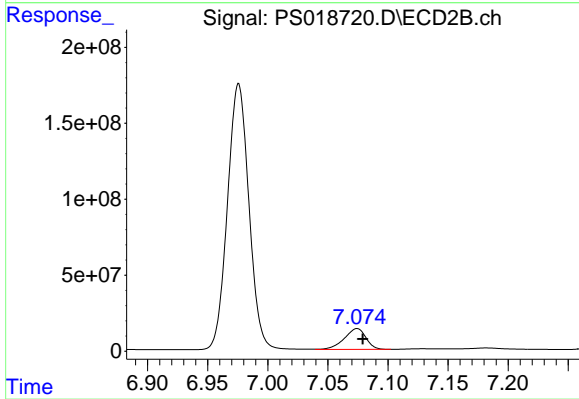
#5 DICAMBA

R.T.: 6.976 min
 Delta R.T.: -0.004 min
 Response: 2171021289
 Conc: 728.88 ng/ml



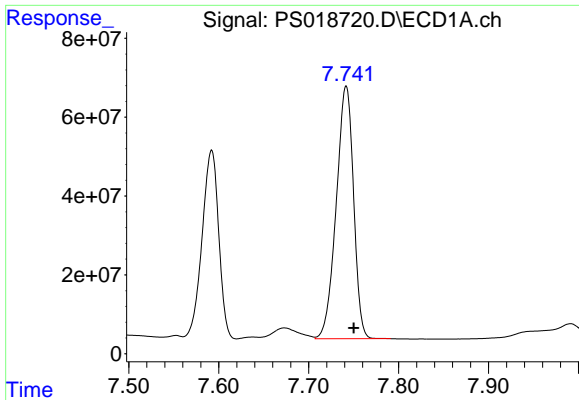
#6 MCP

R.T.: 7.592 min
 Delta R.T.: -0.009 min
 Response: 608856927
 Conc: 71.73 ug/ml



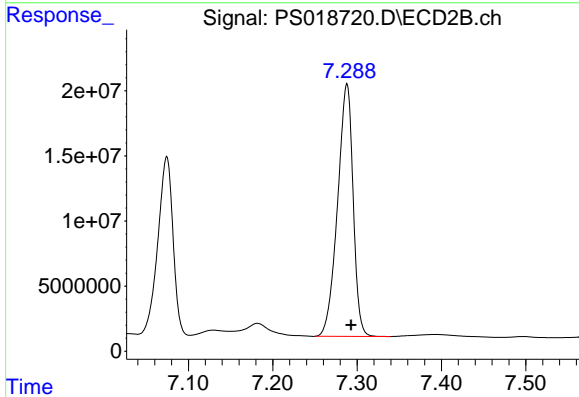
#6 MCP

R.T.: 7.074 min
 Delta R.T.: -0.005 min
 Response: 172271905
 Conc: 70.37 ug/ml

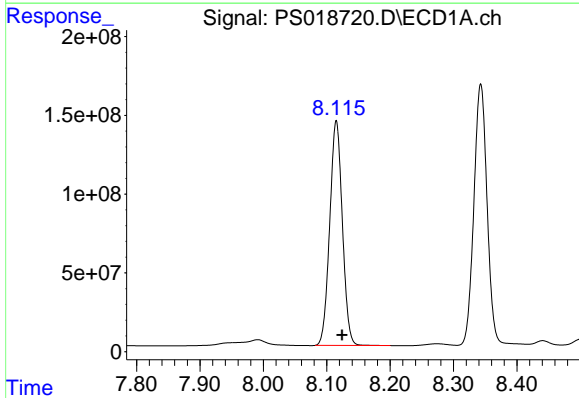


#7 MCPA
 R.T.: 7.742 min
 Delta R.T.: -0.008 min
 Response: 857400478
 Conc: 70.89 ug/ml

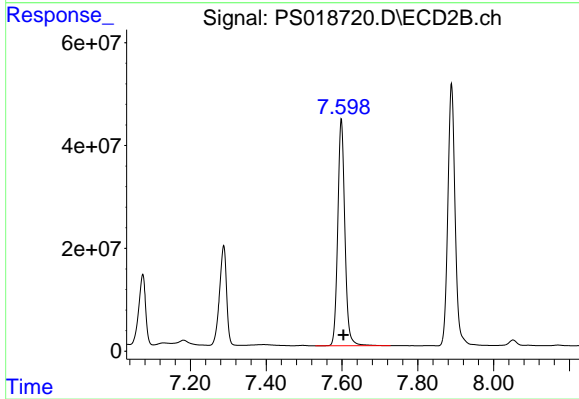
Instrument :
 ECD_S
 ClientSampleId :



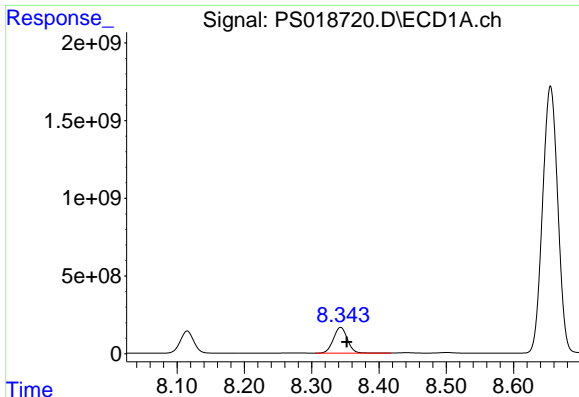
#7 MCPA
 R.T.: 7.288 min
 Delta R.T.: -0.005 min
 Response: 248161308
 Conc: 71.06 ug/ml



#8 DICHLORPROP
 R.T.: 8.115 min
 Delta R.T.: -0.009 min
 Response: 1974982792
 Conc: 717.03 ng/ml



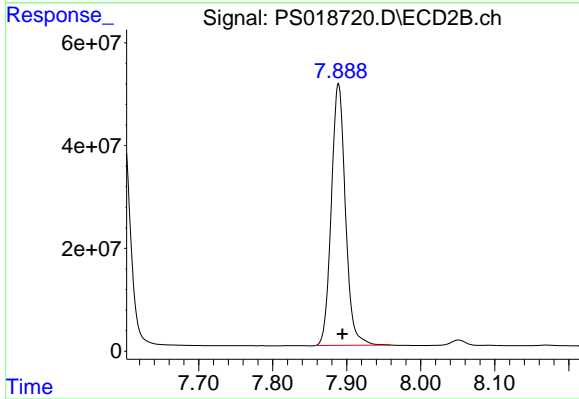
#8 DICHLORPROP
 R.T.: 7.598 min
 Delta R.T.: -0.006 min
 Response: 578101381
 Conc: 730.28 ng/ml



#9 2,4-D

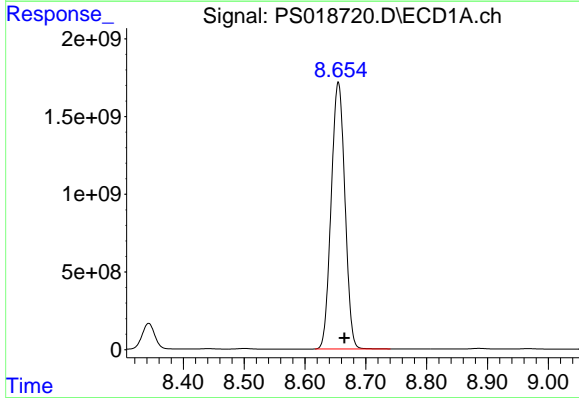
R.T.: 8.343 min
Delta R.T.: -0.009 min
Response: 2409763117
Conc: 719.20 ng/ml

Instrument :
ECD_S
ClientSampleId :



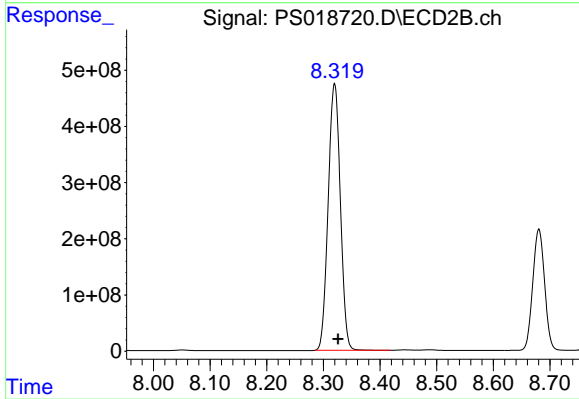
#9 2,4-D

R.T.: 7.889 min
Delta R.T.: -0.005 min
Response: 674261439
Conc: 720.35 ng/ml



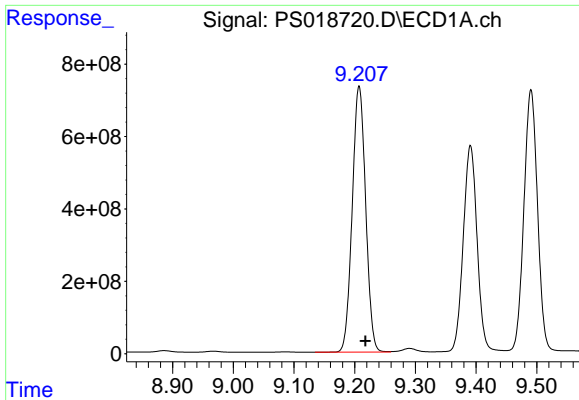
#10 Pentachlorophenol

R.T.: 8.655 min
Delta R.T.: -0.010 min
Response: 26913513192
Conc: 743.41 ng/ml



#10 Pentachlorophenol

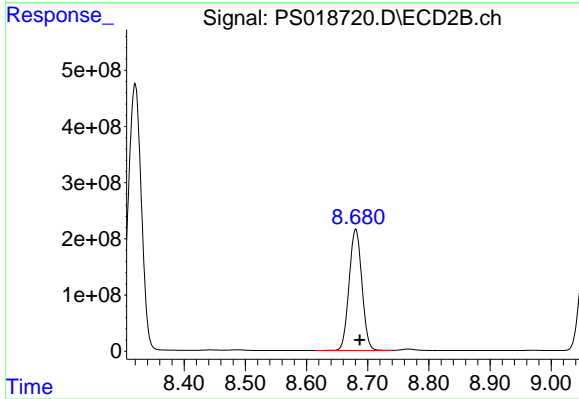
R.T.: 8.320 min
Delta R.T.: -0.006 min
Response: 7085468428
Conc: 721.51 ng/ml



#11 2,4,5-TP (SILVEX)

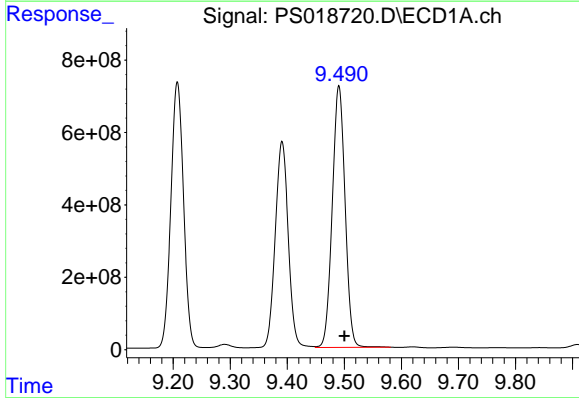
R.T.: 9.207 min
 Delta R.T.: -0.011 min
 Response: 11285389063
 Conc: 742.06 ng/ml

Instrument :
 ECD_S
 ClientSampleId :



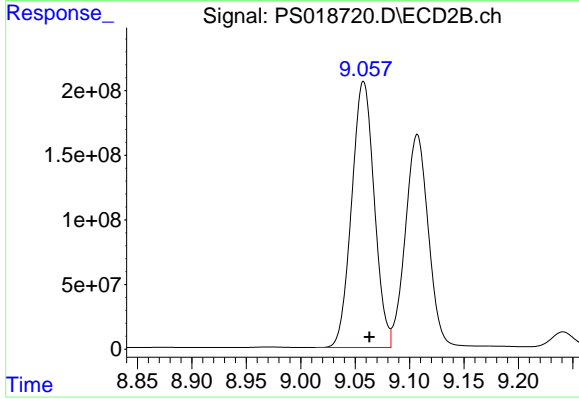
#11 2,4,5-TP (SILVEX)

R.T.: 8.681 min
 Delta R.T.: -0.006 min
 Response: 3140162075
 Conc: 719.89 ng/ml



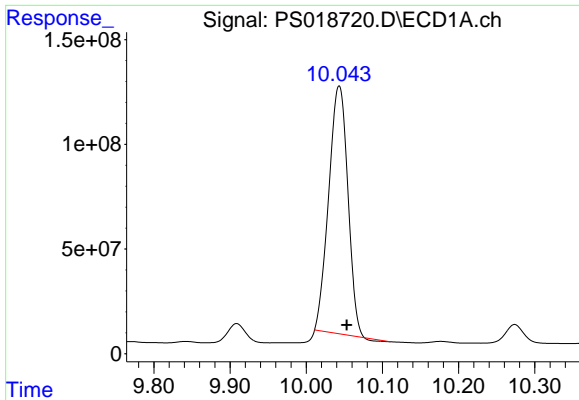
#12 2,4,5-T

R.T.: 9.491 min
 Delta R.T.: -0.009 min
 Response: 11265555214
 Conc: 754.12 ng/ml



#12 2,4,5-T

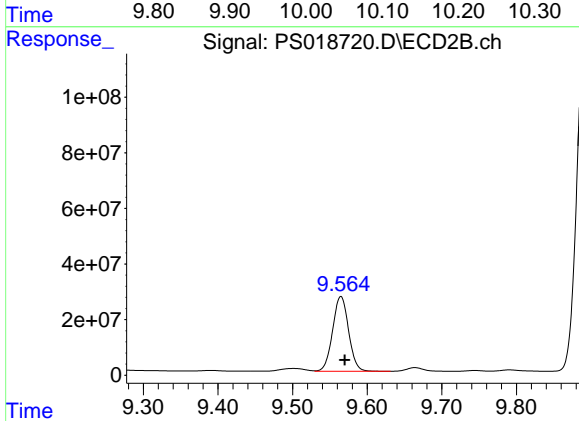
R.T.: 9.058 min
 Delta R.T.: -0.005 min
 Response: 2972538712
 Conc: 717.63 ng/ml



#13 2,4-DB

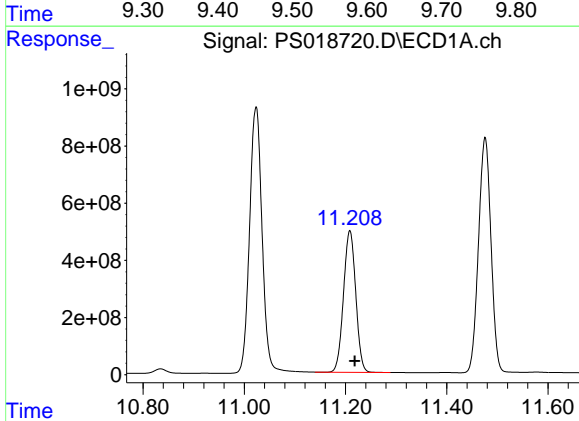
R.T.: 10.043 min
Delta R.T.: -0.010 min
Response: 2054785845
Conc: 751.18 ng/ml

Instrument :
ECD_S
ClientSampleId :



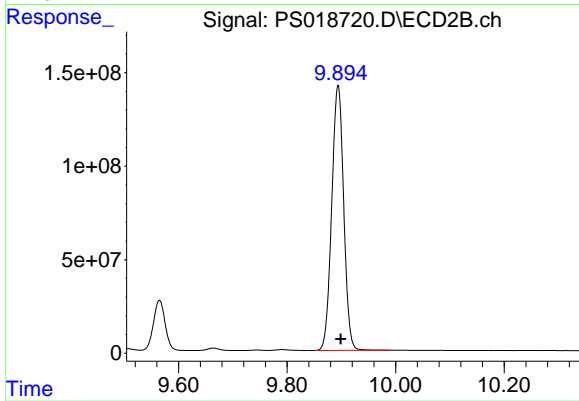
#13 2,4-DB

R.T.: 9.565 min
Delta R.T.: -0.005 min
Response: 399805462
Conc: 704.19 ng/ml



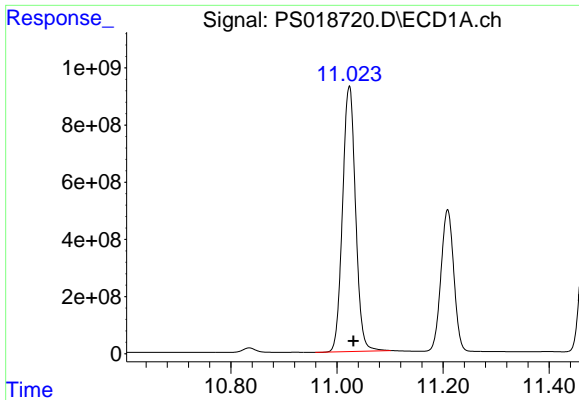
#14 DINOSEB

R.T.: 11.209 min
Delta R.T.: -0.009 min
Response: 8299882019
Conc: 776.19 ng/ml



#14 DINOSEB

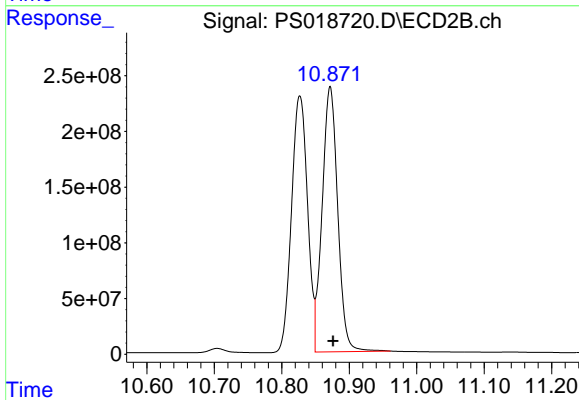
R.T.: 9.894 min
Delta R.T.: -0.005 min
Response: 2168052887
Conc: 707.63 ng/ml



#15 Picloram

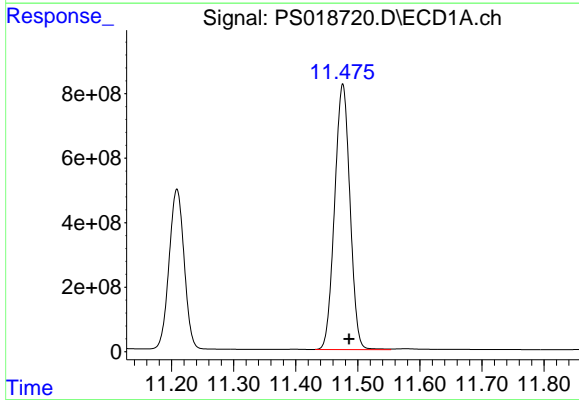
R.T.: 11.024 min
 Delta R.T.: -0.008 min
 Response: 15819787902
 Conc: 769.60 ng/ml

Instrument :
 ECD_S
 ClientSampleId :



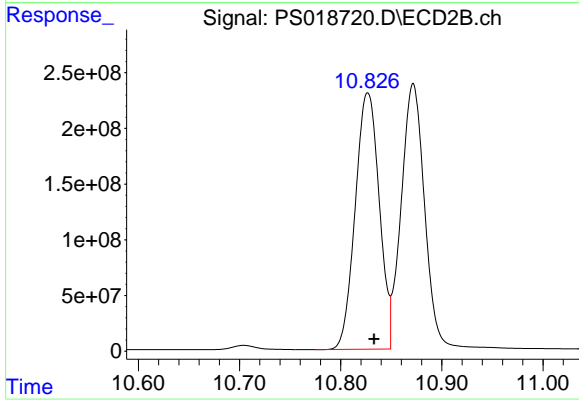
#15 Picloram

R.T.: 10.872 min
 Delta R.T.: -0.004 min
 Response: 3815702056
 Conc: 717.76 ng/ml



#16 DCPA

R.T.: 11.476 min
 Delta R.T.: -0.010 min
 Response: 14122177027
 Conc: 789.35 ng/ml



#16 DCPA

R.T.: 10.827 min
 Delta R.T.: -0.006 min
 Response: 3795050989
 Conc: 721.59 ng/ml