

Data Path : Z:\pestpcbsrv\HPCHEM1\ECD_S\Data\PS032223\
 Data File : PS022472.D
 Signal(s) : Signal #1: ECD1A.ch Signal #2: ECD2B.ch
 Acq On : 22 Mar 2023 23:41
 Operator : AR\AJ
 Sample : 02020-31
 Misc :
 ALS Vial : 17 Sample Multiplier: 1

Instrument :
 ECD_S
 ClientSampleId :

Integration File signal 1: autoint1.e
 Integration File signal 2: autoint2.e
 Quant Time: Mar 23 01:58:12 2023
 Quant Method : Z:\pestpcbsrv\HPCHEM1\ECD_S\Method\PS032023.M
 Quant Title : 8080.M
 QLast Update : Mon Mar 20 15:46:44 2023
 Response via : Initial Calibration
 Integrator: ChemStation

Volume Inj. : 2 µl
 Signal #1 Phase : Rtx-CLPesticides Signal #2 Phase: Rtx-CLPesticides2
 Signal #1 Info : 30M x 0.32mm x0.5 Signal #2 Info : 30M x 0.32mm x 0.25µm

Compound	RT#1	RT#2	Resp#1	Resp#2	ng/ml	ng/ml
System Monitoring Compounds						
4) S 2,4-DCAA	6.294	6.717	988.0E6	912.3E6	404.188	442.927
Target Compounds						
1) T Dalapon	2.363f	2.442	1340.9E6	408.1E6	429.954	125.053 #
2) T 3,5-DICHL...	5.664	5.923	11006400	34082697	2.956	10.688 #
3) T 4-Nitroph...	6.117	6.321	70196953	56649460	51.232	40.349
5) T DICAMBA	6.420	6.837f	6922450	81925614	<MDL	8.305 #
6) T MCPP	6.632	6.970	61487540	65066617	8.088	8.359
7) T MCPA	6.736	7.174	24392293	94719783	2.337	9.016 #
8) T DICHLORPROP	7.000	7.521	-9291899	7863.4E6	N.D.	3157.946
9) T 2,4-D	7.218	7.811	2280539	74338059	<MDL	25.127 #
10) T Pentachlo...	7.380f	8.209	804.7E6	1315497	22.869	<MDL #
11) T 2,4,5-TP ...	7.978	8.530	947.3E6	49452.5E6	63.373	3630.373 #
12) T 2,4,5-T	8.218	8.954	408.5E6	343.1E6	24.873	27.275
13) T 2,4-DB	8.741	9.456	22625.7E6	-10309411905	7503.641	N.D. #
14) T DINOSEB	9.712f	9.766	109583.2E6	-26472909	8455.652	N.D. #
15) T Picloram	0.000	10.756	0	1052.0E6	N.D.	52.424
16) T DCPA	10.092f	10.692	617.0E6	2983.1E6	29.911	188.063 #

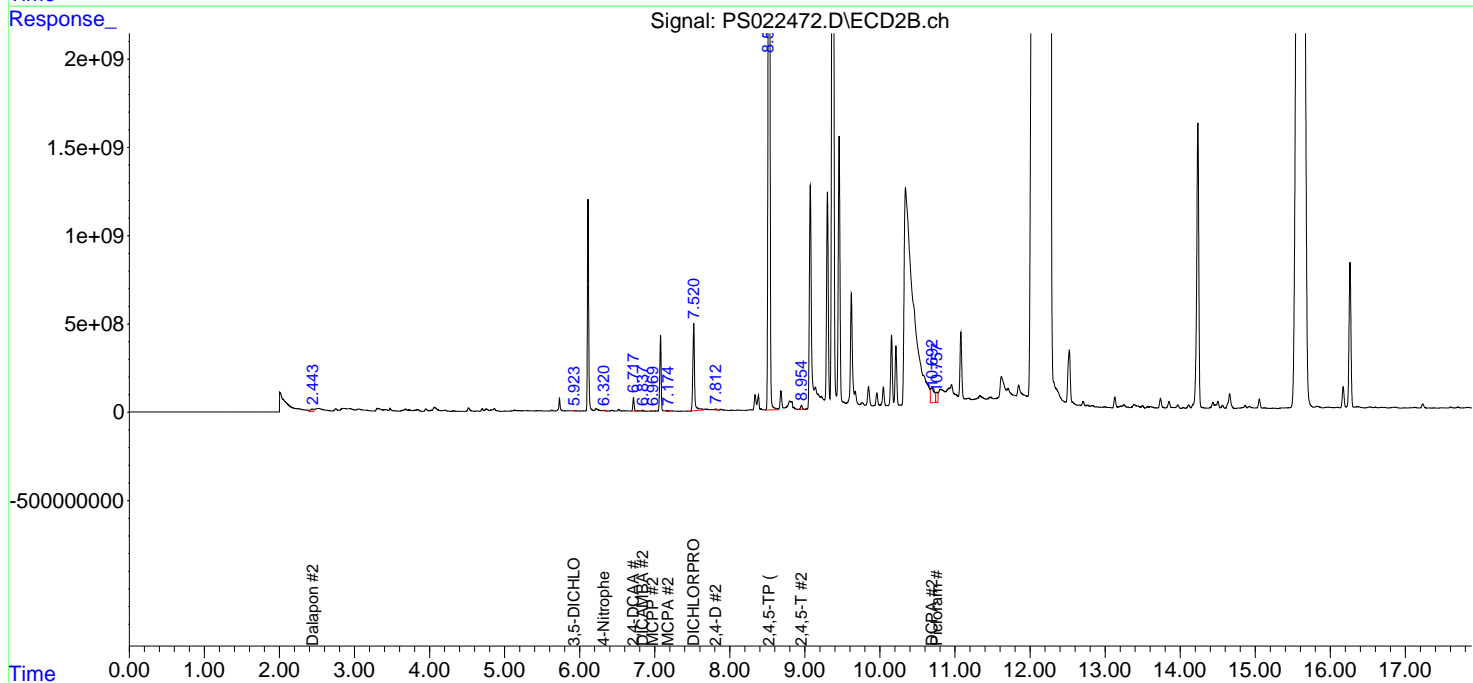
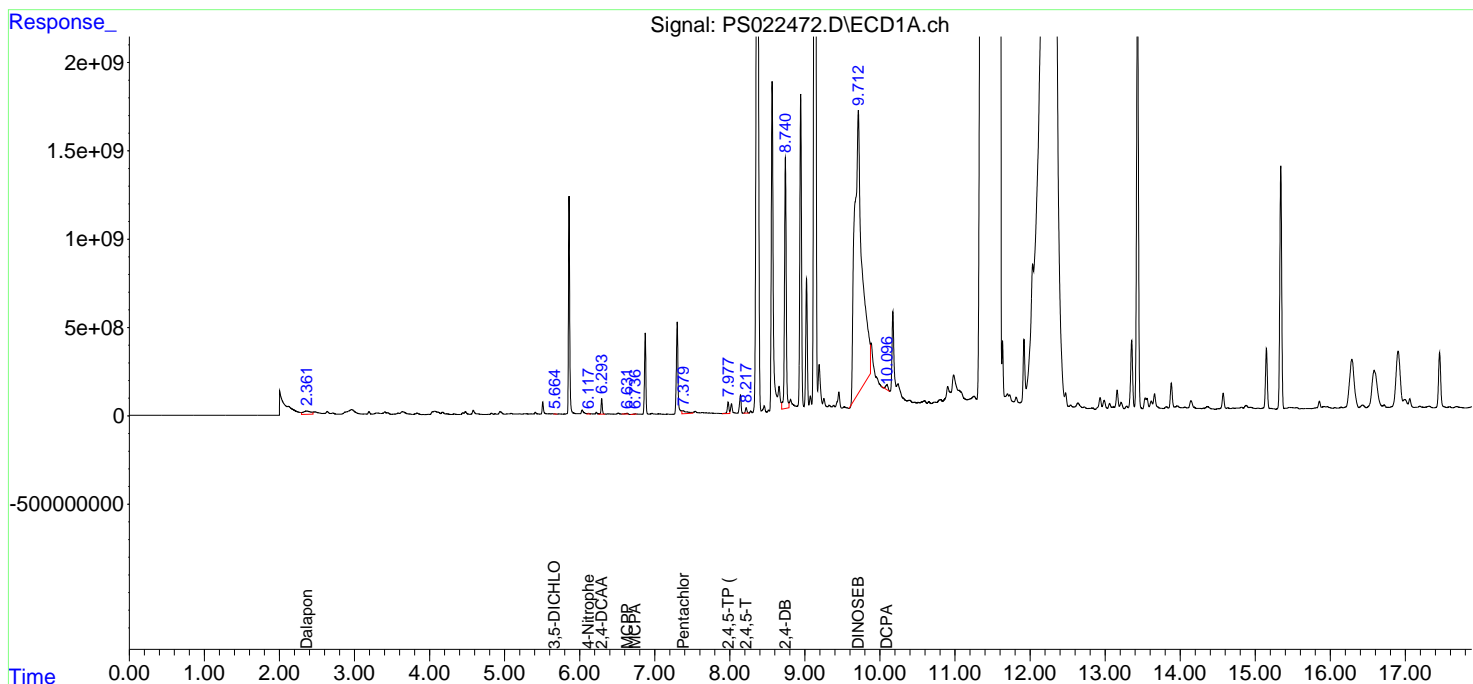
(f)=RT Delta > 1/2 Window (#)=Amounts differ by > 25% (m)=manual int.

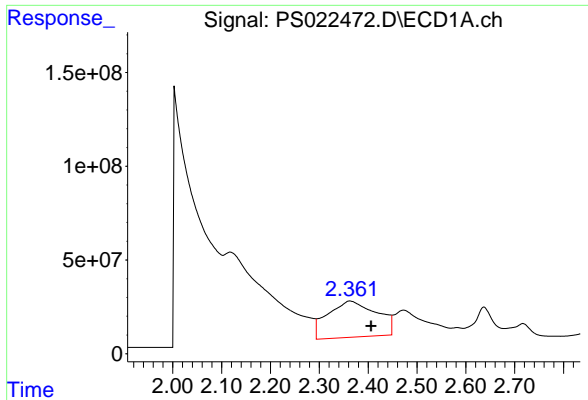
Data Path : Z:\pestpcbsrv\HPCHEM1\ECD_S\Data\PS032223\
 Data File : PS022472.D
 Signal(s) : Signal #1: ECD1A.ch Signal #2: ECD2B.ch
 Acq On : 22 Mar 2023 23:41
 Operator : AR\AJ
 Sample : 02020-31
 Misc :
 ALS Vial : 17 Sample Multiplier: 1

Instrument :
 ECD_S
 ClientSampleId :

Integration File signal 1: autoint1.e
 Integration File signal 2: autoint2.e
 Quant Time: Mar 23 01:58:12 2023
 Quant Method : Z:\pestpcbsrv\HPCHEM1\ECD_S\Method\PS032023.M
 Quant Title : 8080.M
 QLast Update : Mon Mar 20 15:46:44 2023
 Response via : Initial Calibration
 Integrator: ChemStation

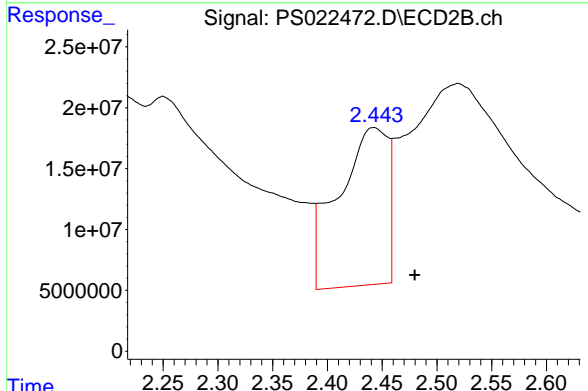
Volume Inj. : 2 µl
 Signal #1 Phase : Rtx-CLPesticides Signal #2 Phase: Rtx-CLPesticides2
 Signal #1 Info : 30M x 0.32mm x0.5 Signal #2 Info : 30M x 0.32mm x 0.25µm



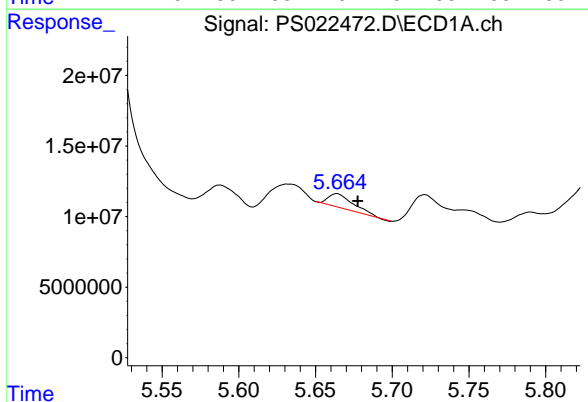


#1 Dalapon
 R.T.: 2.363 min
 Delta R.T.: -0.043 min
 Response: 1340854196
 Conc: 429.95 ng/ml

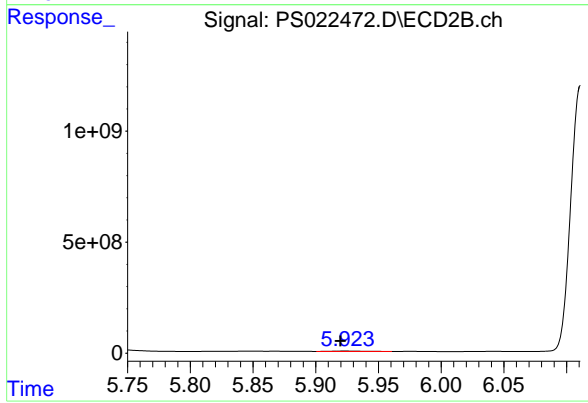
Instrument :
 ECD_S
 ClientSampleId :



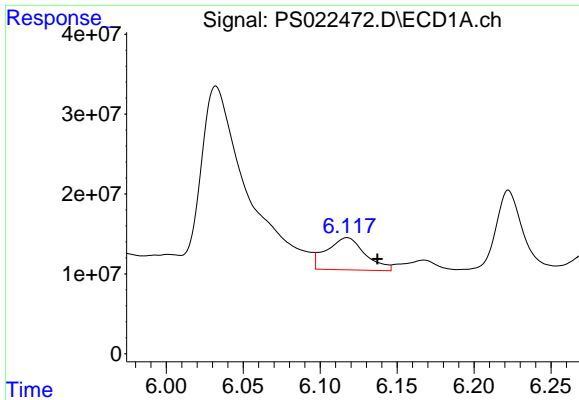
#1 Dalapon
 R.T.: 2.442 min
 Delta R.T.: -0.038 min
 Response: 408112271
 Conc: 125.05 ng/ml



#2 3,5-DICHLOROBENZOIC ACID
 R.T.: 5.664 min
 Delta R.T.: -0.014 min
 Response: 11006400
 Conc: 2.96 ng/ml



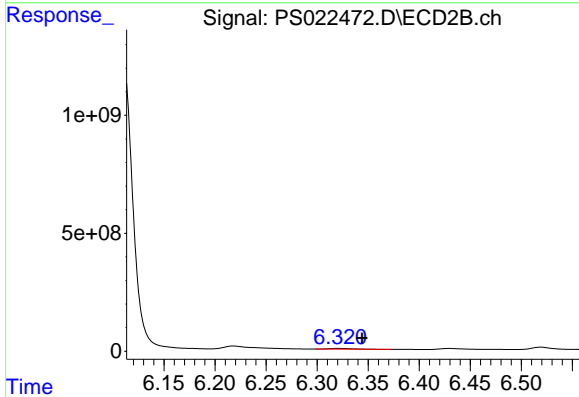
#2 3,5-DICHLOROBENZOIC ACID
 R.T.: 5.923 min
 Delta R.T.: 0.004 min
 Response: 34082697
 Conc: 10.69 ng/ml



#3 4-Nitrophenol

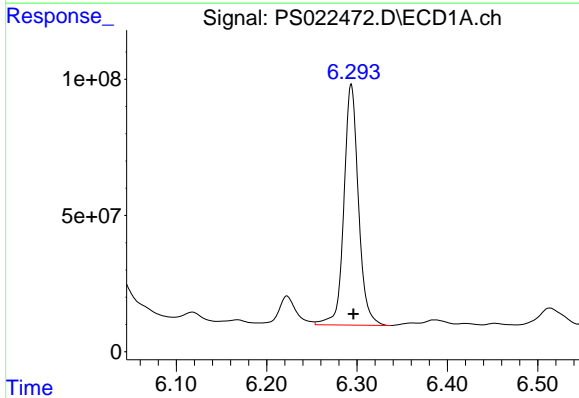
R.T.: 6.117 min
 Delta R.T.: -0.020 min
 Response: 70196953
 Conc: 51.23 ng/ml

Instrument :
 ECD_S
 ClientSampleId :



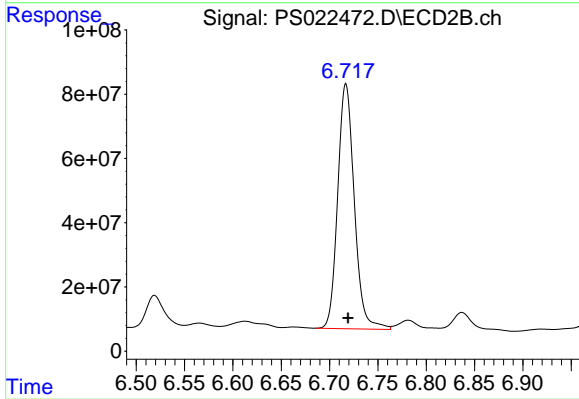
#3 4-Nitrophenol

R.T.: 6.321 min
 Delta R.T.: -0.023 min
 Response: 56649460
 Conc: 40.35 ng/ml



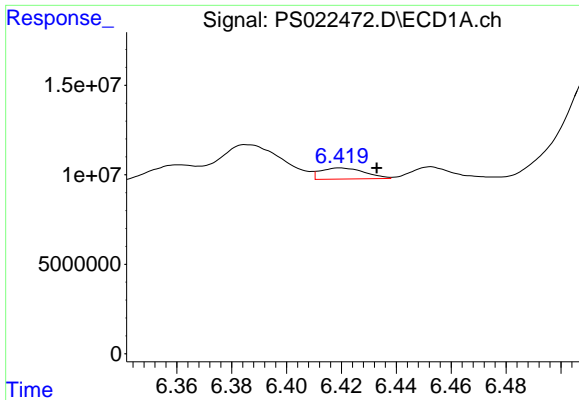
#4 2,4-DCAA

R.T.: 6.294 min
 Delta R.T.: -0.002 min
 Response: 987988995
 Conc: 404.19 ng/ml



#4 2,4-DCAA

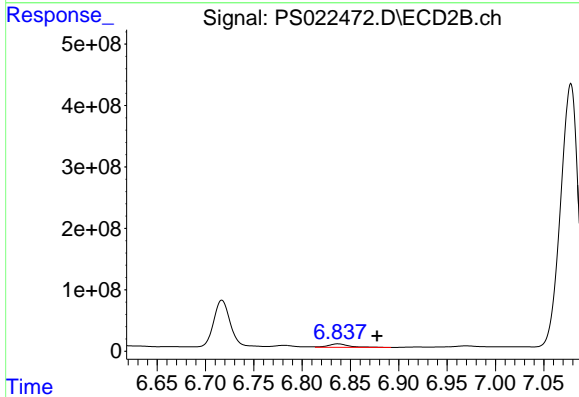
R.T.: 6.717 min
 Delta R.T.: -0.002 min
 Response: 912290619
 Conc: 442.93 ng/ml



#5 DICAMBA

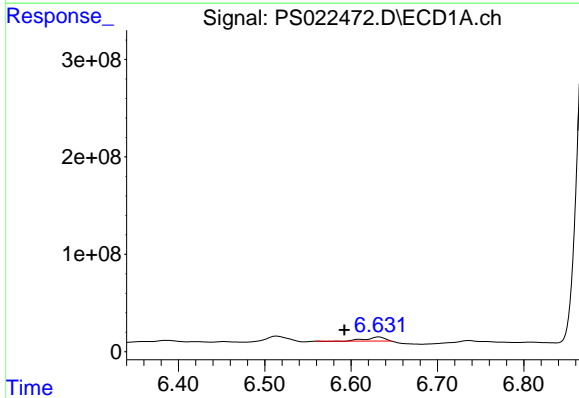
R.T.: 6.420 min
 Delta R.T.: -0.013 min
 Response: 6922450
 Conc: N.D.

Instrument :
 ECD_S
 ClientSampleId :



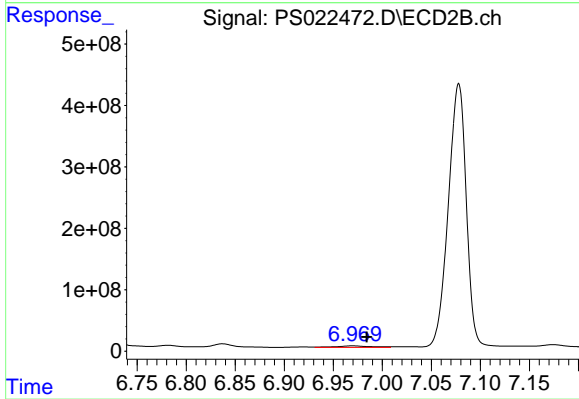
#5 DICAMBA

R.T.: 6.837 min
 Delta R.T.: -0.041 min
 Response: 81925614
 Conc: 8.30 ng/ml



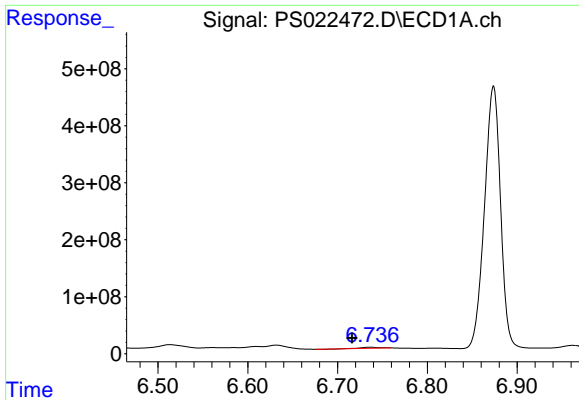
#6 MCP

R.T.: 6.632 min
 Delta R.T.: 0.039 min
 Response: 61487540
 Conc: 8.09 ug/ml



#6 MCP

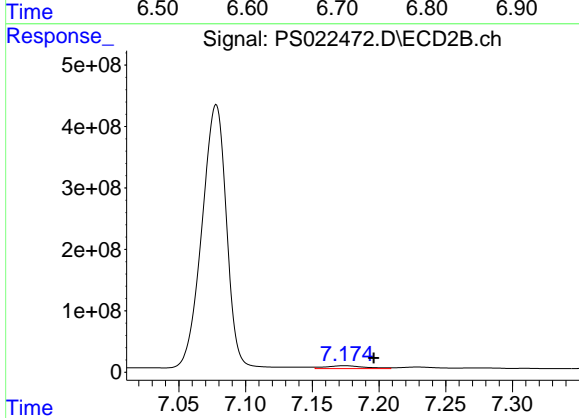
R.T.: 6.970 min
 Delta R.T.: -0.014 min
 Response: 65066617
 Conc: 8.36 ug/ml



#7 MCPA

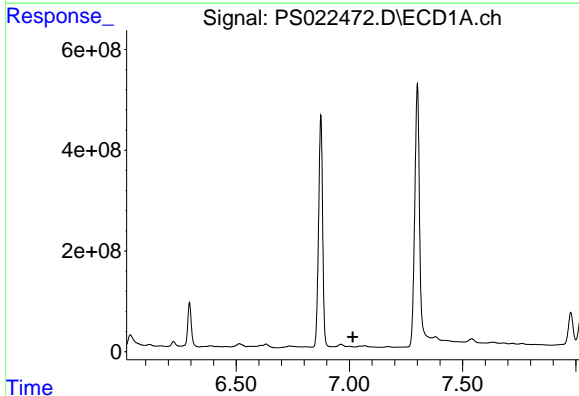
R.T.: 6.736 min
 Delta R.T.: 0.020 min
 Response: 24392293
 Conc: 2.34 ug/ml

Instrument :
 ECD_S
 ClientSampleId :



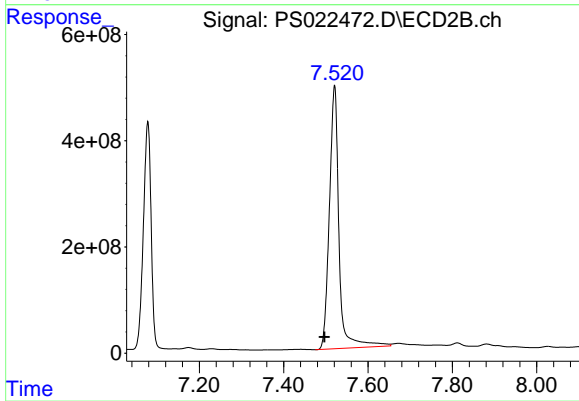
#7 MCPA

R.T.: 7.174 min
 Delta R.T.: -0.022 min
 Response: 94719783
 Conc: 9.02 ug/ml



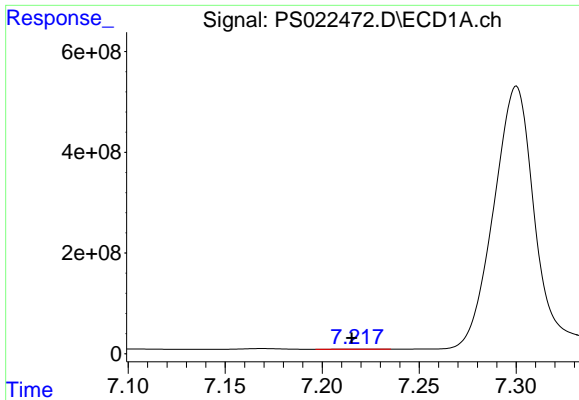
#8 DICHLORPROP

R.T.: 7.000 min
 Delta R.T.: -0.016 min
 Response: -9291899
 Conc: N.D.



#8 DICHLORPROP

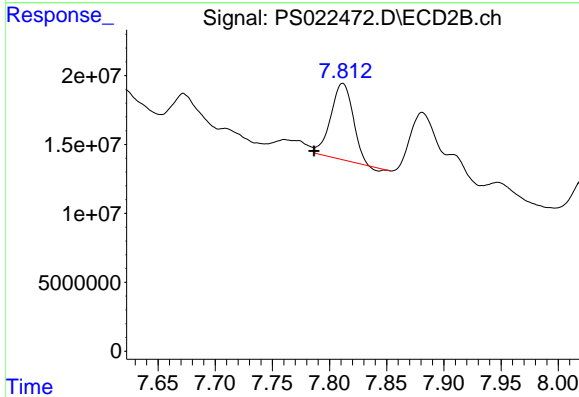
R.T.: 7.521 min
 Delta R.T.: 0.024 min
 Response: 7863361577
 Conc: 3157.95 ng/ml



#9 2,4-D

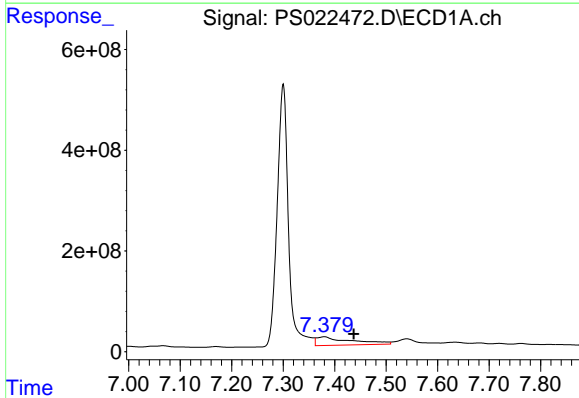
R.T.: 7.218 min
 Delta R.T.: 0.003 min
 Response: 2280539
 Conc: N.D.

Instrument :
 ECD_S
 ClientSampleId :



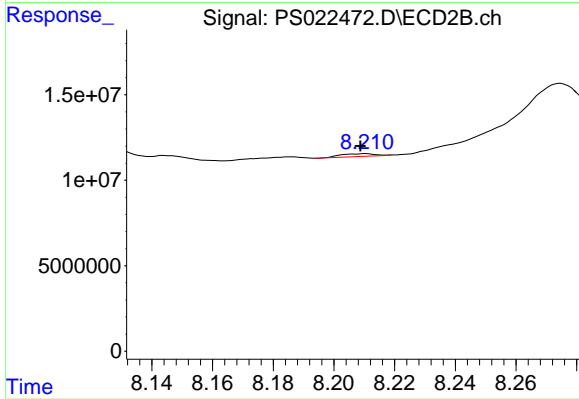
#9 2,4-D

R.T.: 7.811 min
 Delta R.T.: 0.025 min
 Response: 74338059
 Conc: 25.13 ng/ml



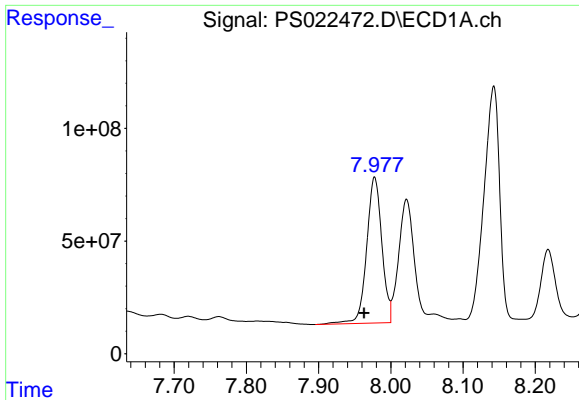
#10 Pentachlorophenol

R.T.: 7.380 min
 Delta R.T.: -0.057 min
 Response: 804656408
 Conc: 22.87 ng/ml



#10 Pentachlorophenol

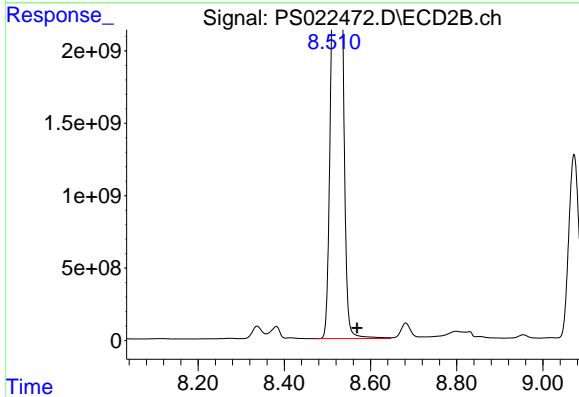
R.T.: 8.209 min
 Delta R.T.: 0.000 min
 Response: 1315497
 Conc: N.D.



#11 2,4,5-TP (SILVEX)

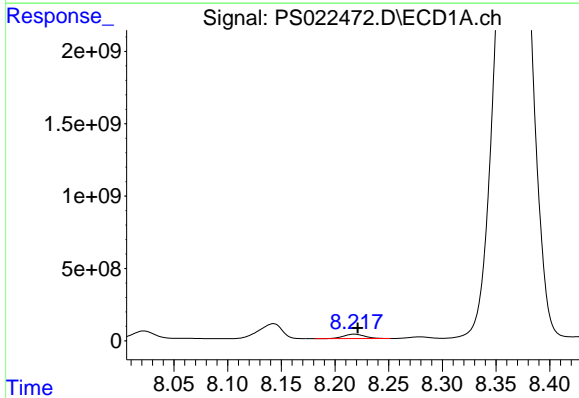
R.T.: 7.978 min
 Delta R.T.: 0.014 min
 Response: 947274820
 Conc: 63.37 ng/ml

Instrument :
 ECD_S
 ClientSampleId :



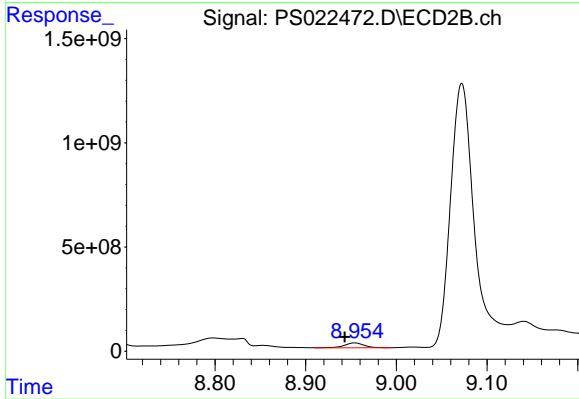
#11 2,4,5-TP (SILVEX)

R.T.: 8.530 min
 Delta R.T.: -0.040 min
 Response: 4945246157
 Conc: 3630.37 ng/ml



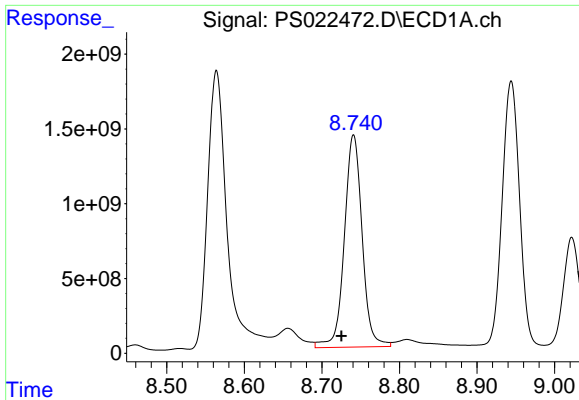
#12 2,4,5-T

R.T.: 8.218 min
 Delta R.T.: -0.003 min
 Response: 408451888
 Conc: 24.87 ng/ml



#12 2,4,5-T

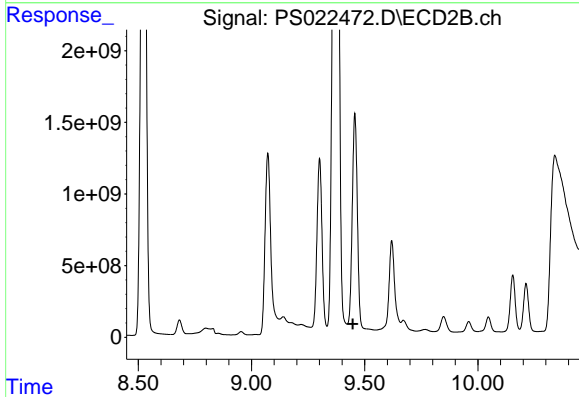
R.T.: 8.954 min
 Delta R.T.: 0.011 min
 Response: 343112432
 Conc: 27.27 ng/ml



#13 2,4-DB

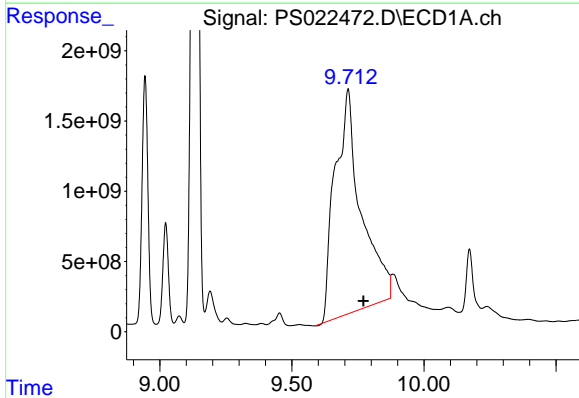
R.T.: 8.741 min
 Delta R.T.: 0.016 min
 Response: 22625670392
 Conc: 7503.64 ng/m

Instrument :
 ECD_S
 ClientSampleId :



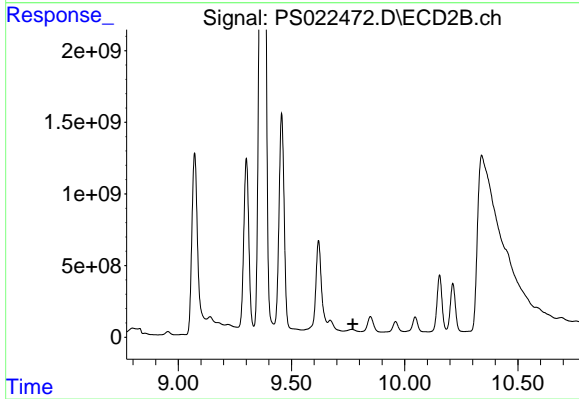
#13 2,4-DB

R.T.: 9.456 min
 Delta R.T.: 0.008 min
 Response: -10309411905
 Conc: N.D.



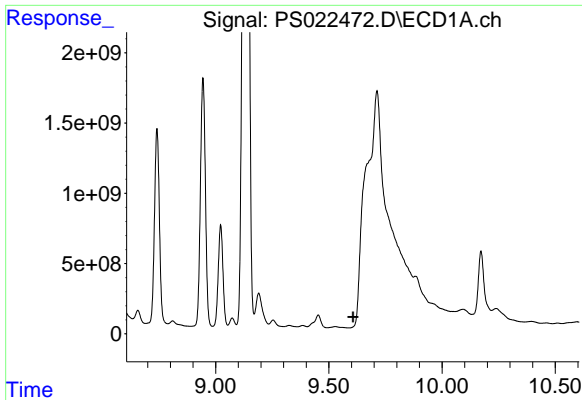
#14 DINOSEB

R.T.: 9.712 min
 Delta R.T.: -0.058 min
 Response: 1.09583e+011
 Conc: 8455.65 ng/ml



#14 DINOSEB

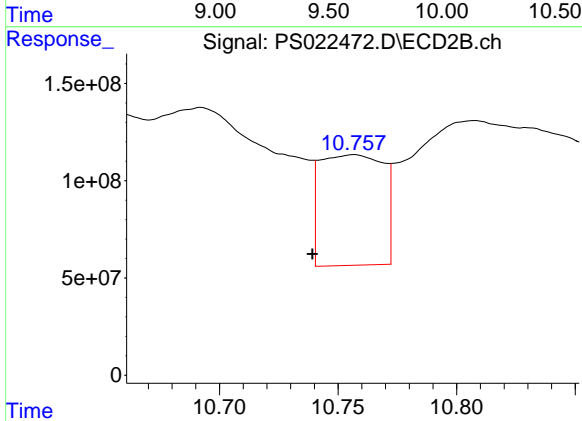
R.T.: 9.766 min
 Delta R.T.: -0.005 min
 Response: -26472909
 Conc: N.D.



#15 Picloram

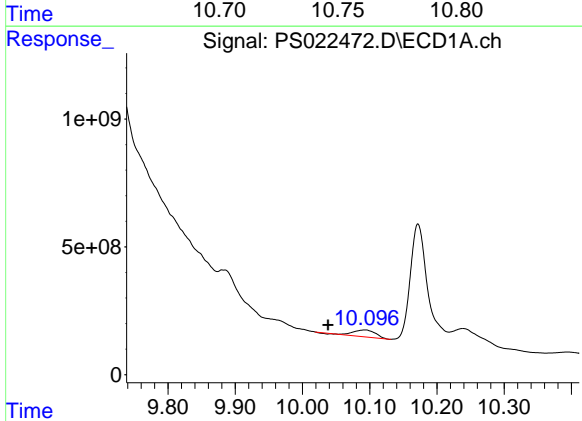
R.T.: 0.000 min
 Exp R.T.: 9.607 min
 Response: 0
 Conc: N.D.

Instrument :
 ECD_S
 ClientSampleId :



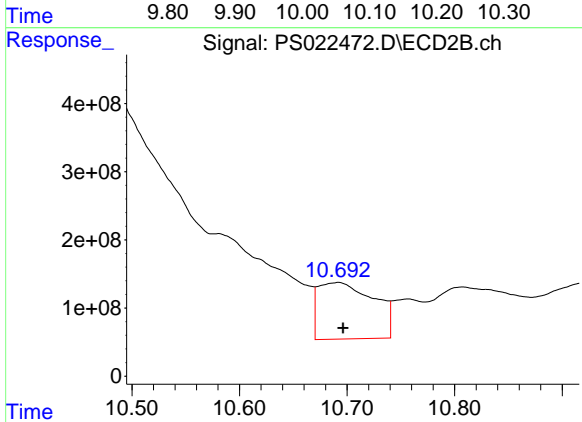
#15 Picloram

R.T.: 10.756 min
 Delta R.T.: 0.017 min
 Response: 1051987766
 Conc: 52.42 ng/ml



#16 DCPA

R.T.: 10.092 min
 Delta R.T.: 0.054 min
 Response: 616951828
 Conc: 29.91 ng/ml



#16 DCPA

R.T.: 10.692 min
 Delta R.T.: -0.005 min
 Response: 2983115149
 Conc: 188.06 ng/ml