

Data Path : Z:\pestpcbsrv\HPCHEM1\ECD_S\Data\PS032321\
 Data File : PS014325.D
 Signal(s) : Signal #1: ECD1A.ch Signal #2: ECD2B.ch
 Acq On : 23 Mar 2021 10:19
 Operator : DD\AJ
 Sample : M1718-01
 Misc :
 ALS Vial : 4 Sample Multiplier: 1

Instrument :
 ECD_S
 ClientSampleId :

Integration File signal 1: autoint1.e
 Integration File signal 2: autoint2.e
 Quant Time: Mar 23 12:15:47 2021
 Quant Method : Z:\pestpcbsrv\HPCHEM1\ECD_S\Method\PS031721.M
 Quant Title : 8080.M
 QLast Update : Thu Mar 18 02:23:19 2021
 Response via : Initial Calibration
 Integrator: ChemStation

Volume Inj. : 2 µl
 Signal #1 Phase : Rtx-CLPesticides Signal #2 Phase: Rtx-CLPesticides2
 Signal #1 Info : 30M x 0.32mm x0.5 Signal #2 Info : 30M x 0.32mm x 0.25µm

	Compound	RT#1	RT#2	Resp#1	Resp#2	ng/ml	ng/ml

System Monitoring Compounds							
4) S	2,4-DCAA	7.163	6.884	724.2E6	268.6E6	506.822	569.440
Target Compounds							
1) T	Dalapon	2.979	2.583	73161396	25803621	47.004	43.576
2) T	3,5-DICHL...	6.456f	6.074	7627711	28522057	3.951	38.307 #
3) T	4-Nitroph...	7.001	6.518	5434419	6980161	7.277	22.979 #
5) T	DICAMBA	7.382	7.060	13042416	6547378	2.425	3.268 #
6) T	MCP P	7.512	7.093f	16162998	6528104	3.887	3.921
7) T	MCPA	7.703	7.344	15268332	22515865	2.654	9.241 #
8) T	DICHLORPROP	7.986f	7.703	13019534	49925742	9.832	97.986 #
9) T	2,4-D	8.242	7.944	15706463	16657124	10.656	27.897 #
10) T	Pentachlo...	8.627f	8.407	65860488	4282463	3.309	<MDL #
11) T	2,4,5-TP ...	9.138	8.728	12532183	117.0E6	1.626	43.007 #
12) T	2,4,5-T	9.418	9.139	15087927	12496077	1.939	4.687 #
13) T	2,4-DB	9.949	9.661	67015392	3258417	43.337	9.188 #
14) T	DINOSEB	11.073	9.990	123.0E6	16670079	21.520	9.225 #
15) T	Picloram	10.941	10.969	102.3E6	46485614	9.800	12.253 #
16) T	DCPA	11.387	10.898	4622491	8394628	<MDL	2.047 #

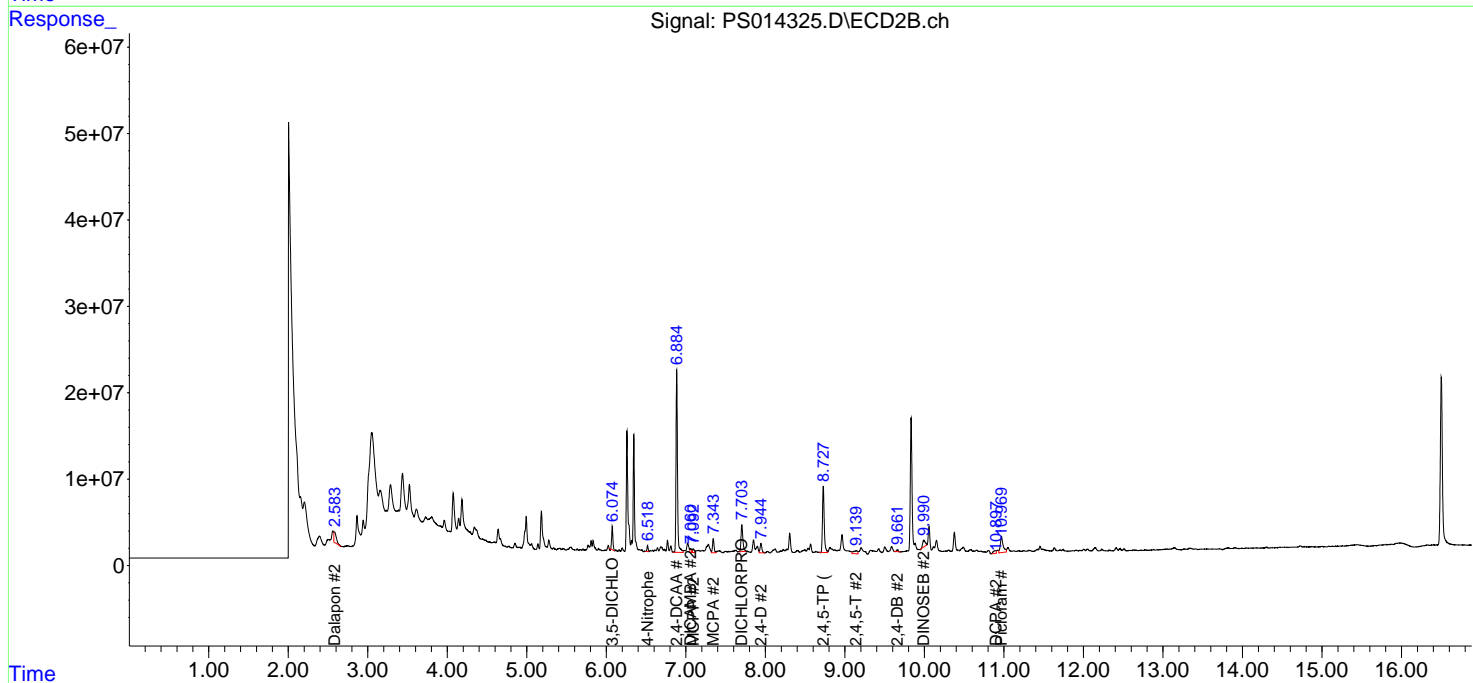
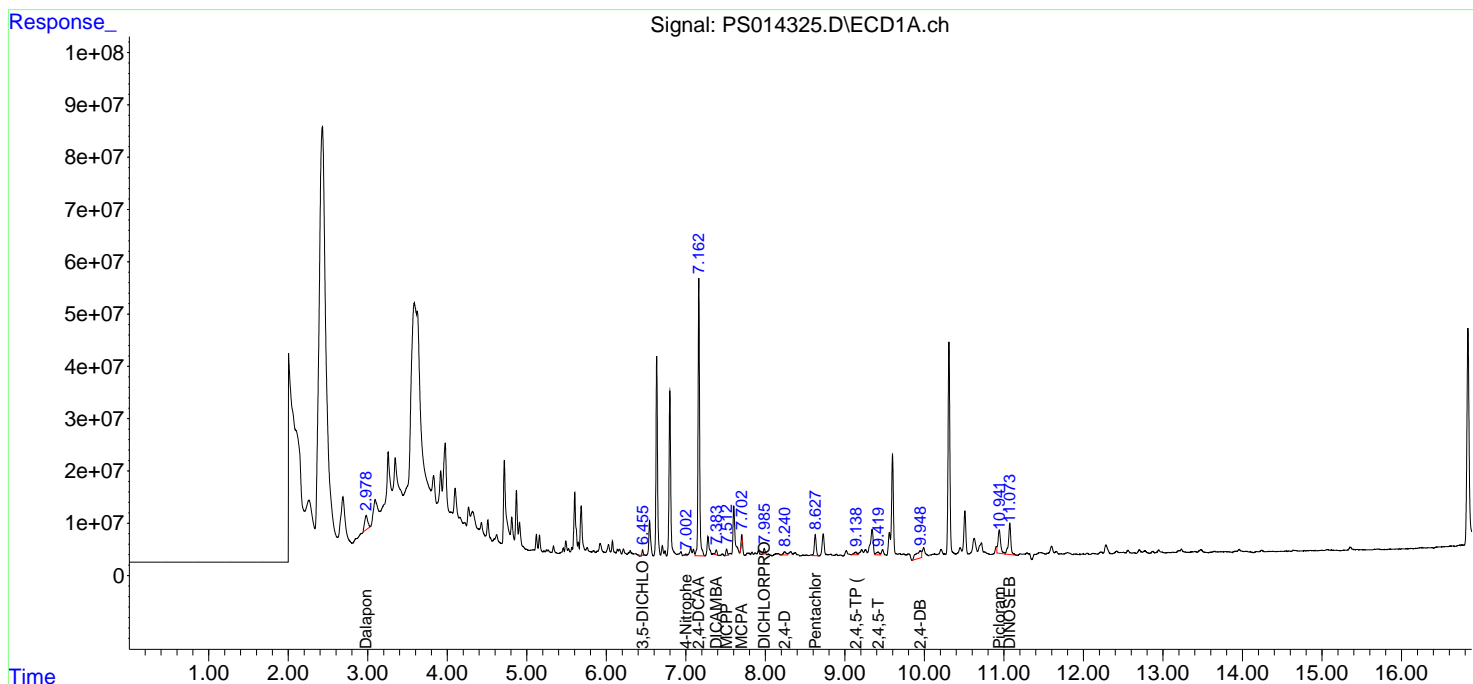
(f)=RT Delta > 1/2 Window (#)=Amounts differ by > 25% (m)=manual int.

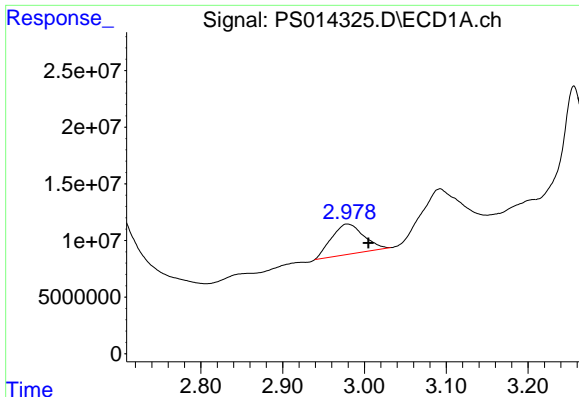
Data Path : Z:\pestpcbsrv\HPCHEM1\ECD_S\Data\PS032321\
 Data File : PS014325.D
 Signal(s) : Signal #1: ECD1A.ch Signal #2: ECD2B.ch
 Acq On : 23 Mar 2021 10:19
 Operator : DD\AJ
 Sample : M1718-01
 Misc :
 ALS Vial : 4 Sample Multiplier: 1

Instrument :
 ECD_S
 ClientSampled :

Integration File signal 1: autoint1.e
 Integration File signal 2: autoint2.e
 Quant Time: Mar 23 12:15:47 2021
 Quant Method : Z:\pestpcbsrv\HPCHEM1\ECD_S\Method\PS031721.M
 Quant Title : 8080.M
 QLast Update : Thu Mar 18 02:23:19 2021
 Response via : Initial Calibration
 Integrator: ChemStation

Volume Inj. : 2 µl
 Signal #1 Phase : Rtx-CLPesticides Signal #2 Phase: Rtx-CLPesticides2
 Signal #1 Info : 30M x 0.32mm x0.5 Signal #2 Info : 30M x 0.32mm x 0.25µm

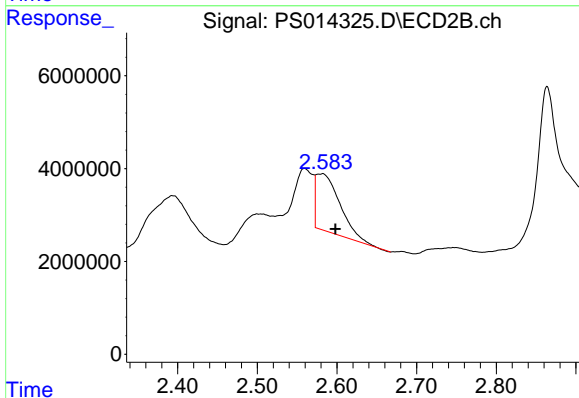




#1 Dalapon

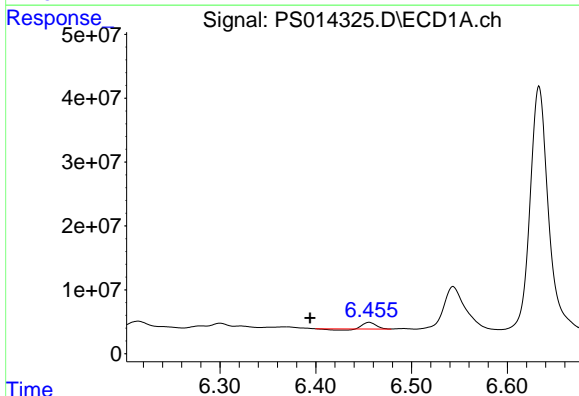
R.T.: 2.979 min
 Delta R.T.: -0.026 min
 Response: 73161396
 Conc: 47.00 ng/ml

Instrument :
 ECD_S
 ClientSampleId :



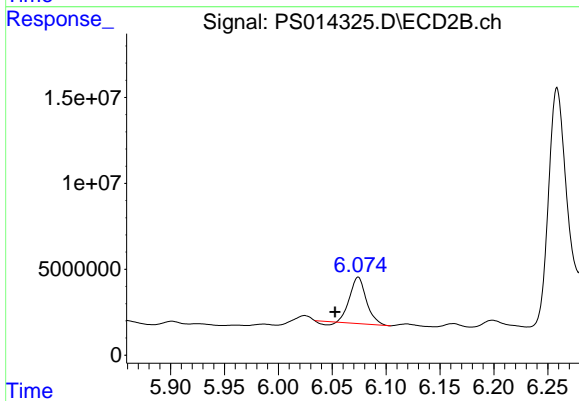
#1 Dalapon

R.T.: 2.583 min
 Delta R.T.: -0.015 min
 Response: 25803621
 Conc: 43.58 ng/ml



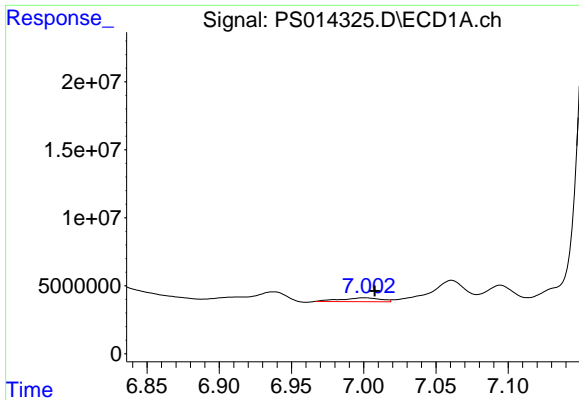
#2 3,5-DICHLOROBENZOIC ACID

R.T.: 6.456 min
 Delta R.T.: 0.062 min
 Response: 7627711
 Conc: 3.95 ng/ml



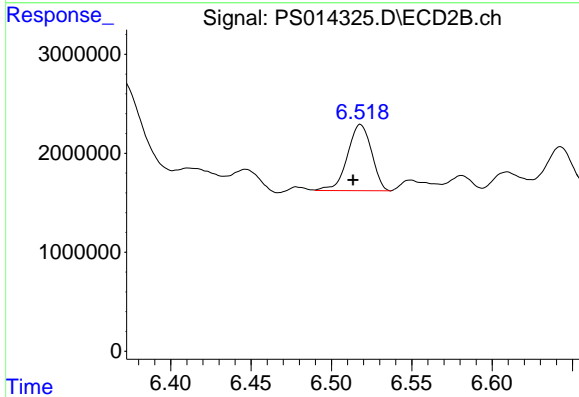
#2 3,5-DICHLOROBENZOIC ACID

R.T.: 6.074 min
 Delta R.T.: 0.022 min
 Response: 28522057
 Conc: 38.31 ng/ml

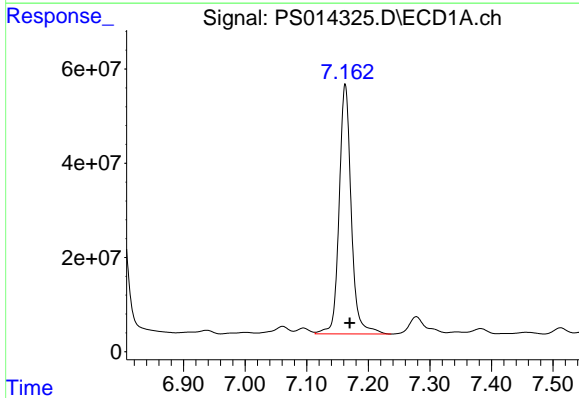


#3 4-Nitrophenol
 R.T.: 7.001 min
 Delta R.T.: -0.007 min
 Response: 5434419
 Conc: 7.28 ng/ml

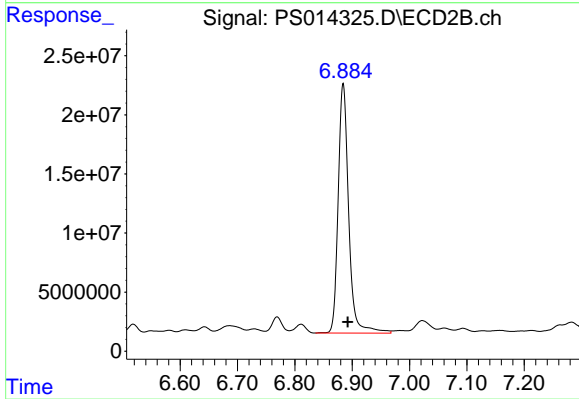
Instrument :
 ECD_S
 ClientSampleId :



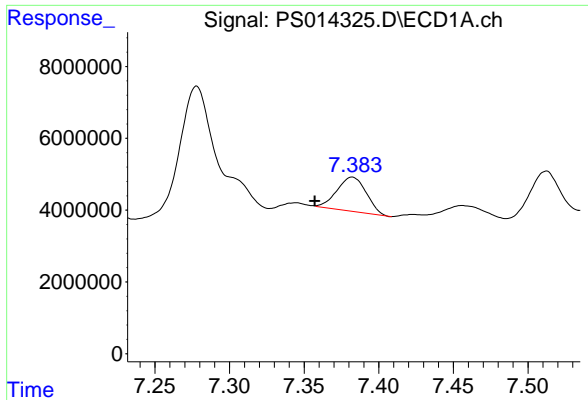
#3 4-Nitrophenol
 R.T.: 6.518 min
 Delta R.T.: 0.005 min
 Response: 6980161
 Conc: 22.98 ng/ml



#4 2,4-DCAA
 R.T.: 7.163 min
 Delta R.T.: -0.008 min
 Response: 724168943
 Conc: 506.82 ng/ml

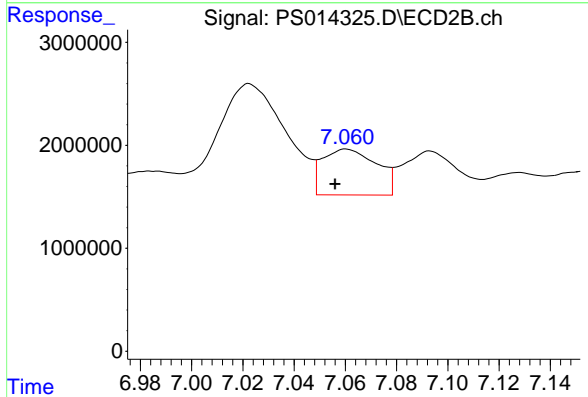


#4 2,4-DCAA
 R.T.: 6.884 min
 Delta R.T.: -0.008 min
 Response: 268644185
 Conc: 569.44 ng/ml

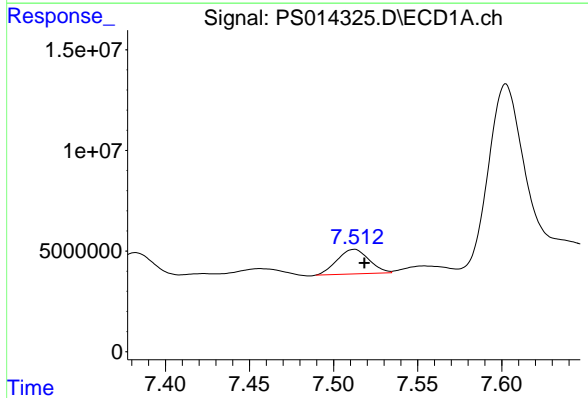


#5 DICAMBA
 R.T.: 7.382 min
 Delta R.T.: 0.025 min
 Response: 13042416
 Conc: 2.43 ng/ml

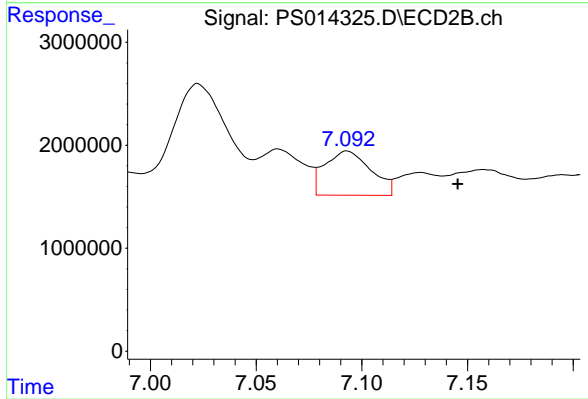
Instrument :
 ECD_S
 ClientSampleId :



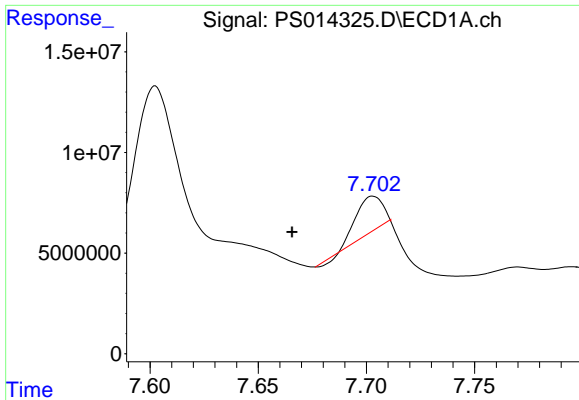
#5 DICAMBA
 R.T.: 7.060 min
 Delta R.T.: 0.004 min
 Response: 6547378
 Conc: 3.27 ng/ml



#6 MCPP
 R.T.: 7.512 min
 Delta R.T.: -0.006 min
 Response: 16162998
 Conc: 3.89 ug/ml

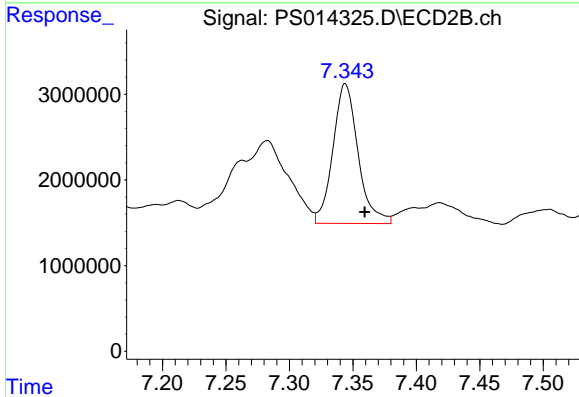


#6 MCPP
 R.T.: 7.093 min
 Delta R.T.: -0.052 min
 Response: 6528104
 Conc: 3.92 ug/ml

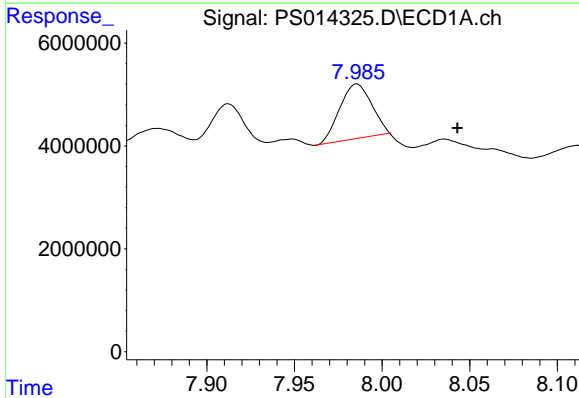


#7 MCPA
 R.T.: 7.703 min
 Delta R.T.: 0.037 min
 Response: 15268332
 Conc: 2.65 ug/ml

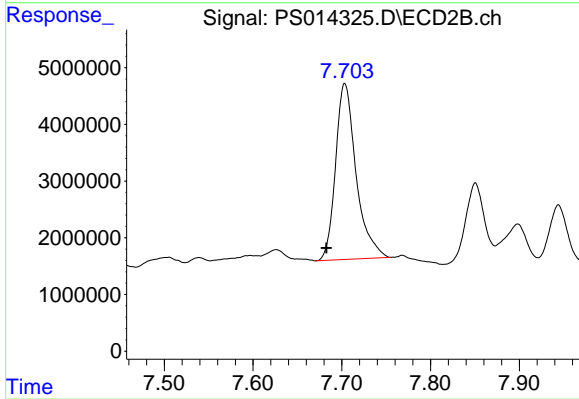
Instrument :
 ECD_S
 ClientSampled :



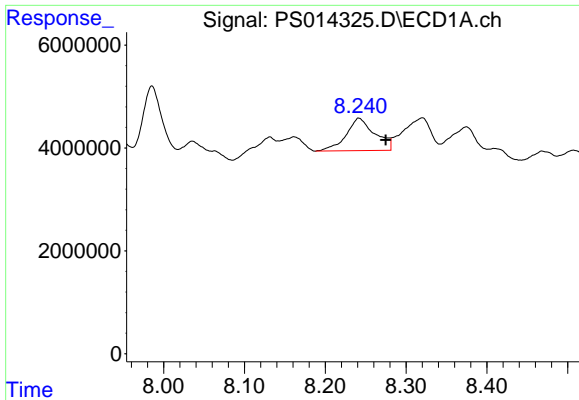
#7 MCPA
 R.T.: 7.344 min
 Delta R.T.: -0.015 min
 Response: 22515865
 Conc: 9.24 ug/ml



#8 DICHLORPROP
 R.T.: 7.986 min
 Delta R.T.: -0.057 min
 Response: 13019534
 Conc: 9.83 ng/ml

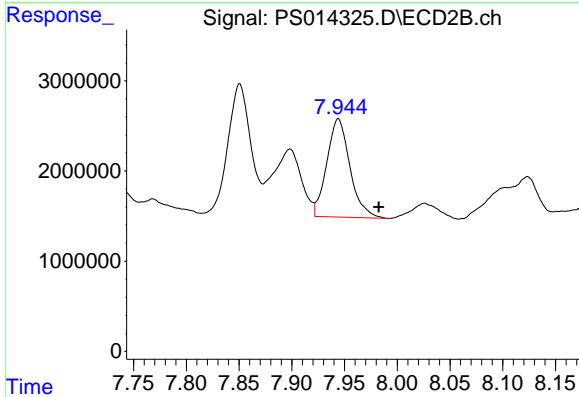


#8 DICHLORPROP
 R.T.: 7.703 min
 Delta R.T.: 0.021 min
 Response: 49925742
 Conc: 97.99 ng/ml

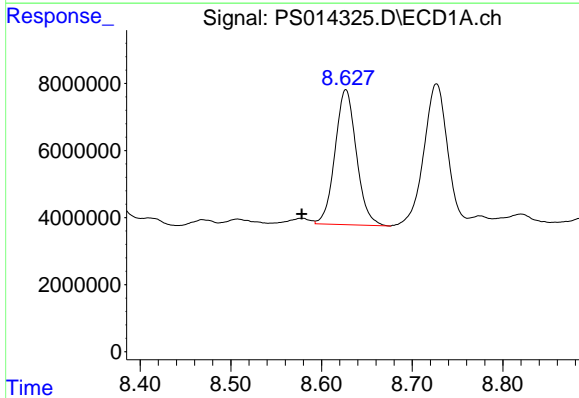


#9 2,4-D
 R.T.: 8.242 min
 Delta R.T.: -0.033 min
 Response: 15706463
 Conc: 10.66 ng/ml

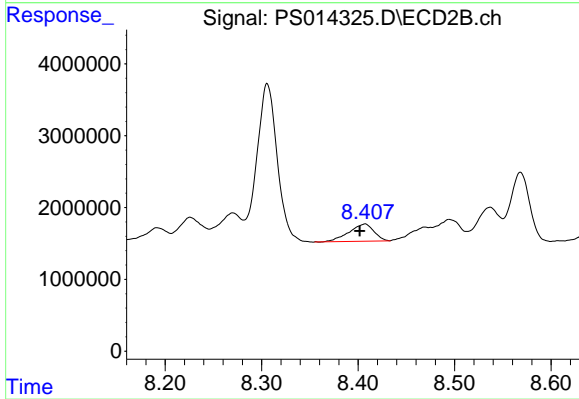
Instrument :
 ECD_S
 ClientSampleId :



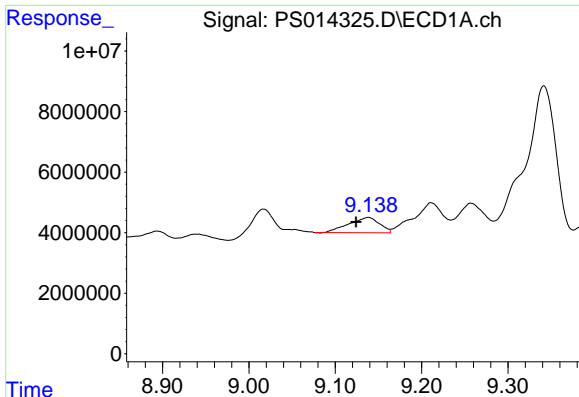
#9 2,4-D
 R.T.: 7.944 min
 Delta R.T.: -0.038 min
 Response: 16657124
 Conc: 27.90 ng/ml



#10 Pentachlorophenol
 R.T.: 8.627 min
 Delta R.T.: 0.049 min
 Response: 65860488
 Conc: 3.31 ng/ml



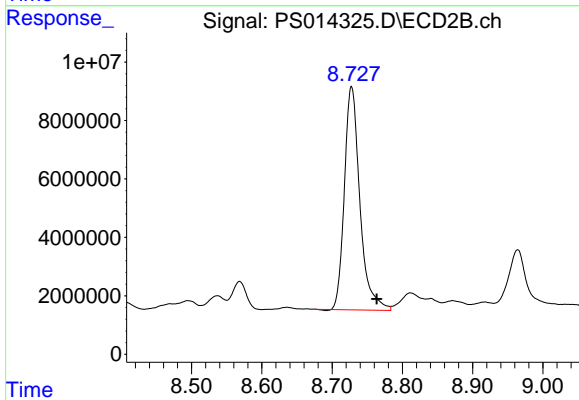
#10 Pentachlorophenol
 R.T.: 8.407 min
 Delta R.T.: 0.006 min
 Response: 4282463
 Conc: N.D.



#11 2,4,5-TP (SILVEX)

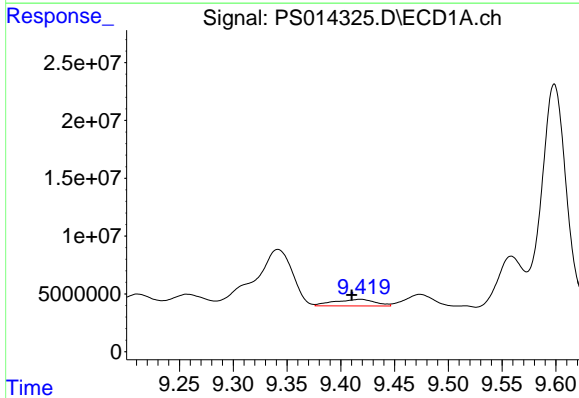
R.T.: 9.138 min
 Delta R.T.: 0.014 min
 Response: 12532183
 Conc: 1.63 ng/ml

Instrument :
 ECD_S
 ClientSampleId :



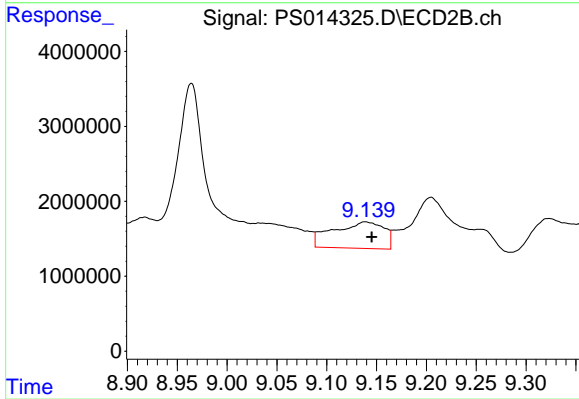
#11 2,4,5-TP (SILVEX)

R.T.: 8.728 min
 Delta R.T.: -0.036 min
 Response: 117006506
 Conc: 43.01 ng/ml



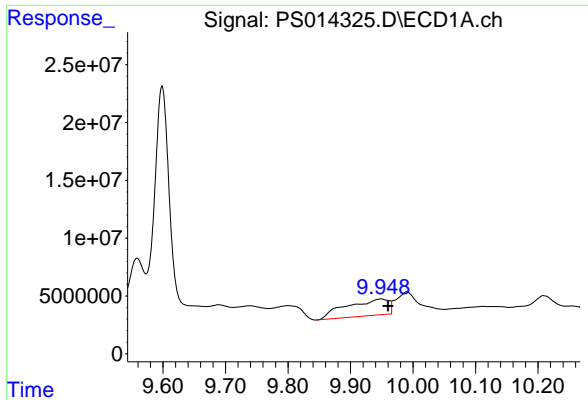
#12 2,4,5-T

R.T.: 9.418 min
 Delta R.T.: 0.008 min
 Response: 15087927
 Conc: 1.94 ng/ml



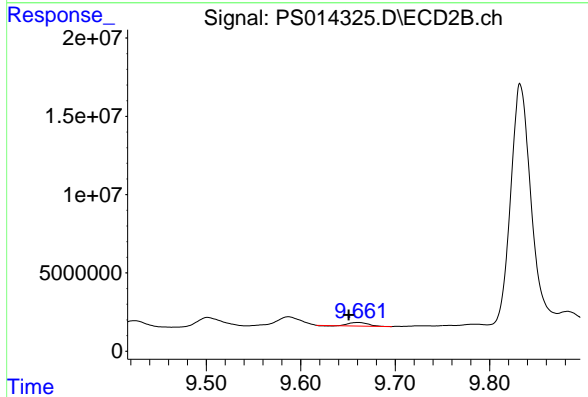
#12 2,4,5-T

R.T.: 9.139 min
 Delta R.T.: -0.006 min
 Response: 12496077
 Conc: 4.69 ng/ml

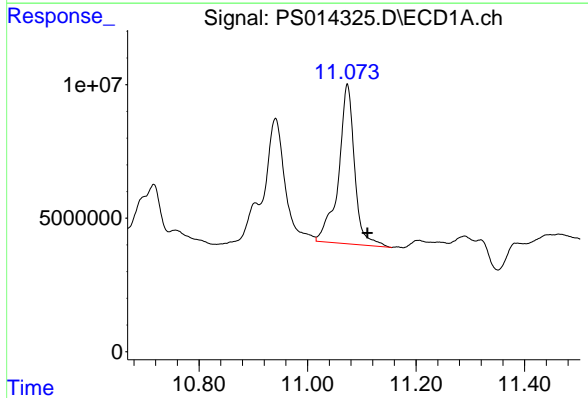


#13 2,4-DB
 R.T.: 9.949 min
 Delta R.T.: -0.011 min
 Response: 67015392
 Conc: 43.34 ng/ml

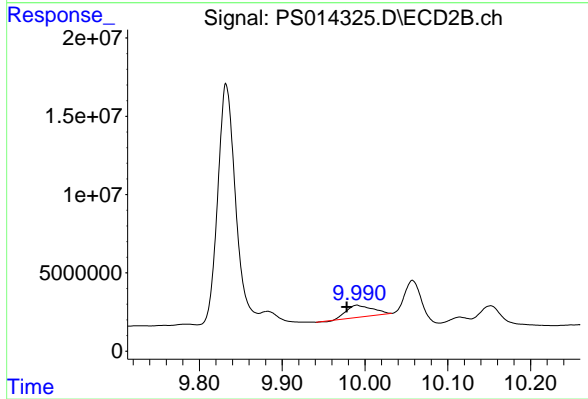
Instrument :
 ECD_S
 ClientSampled :



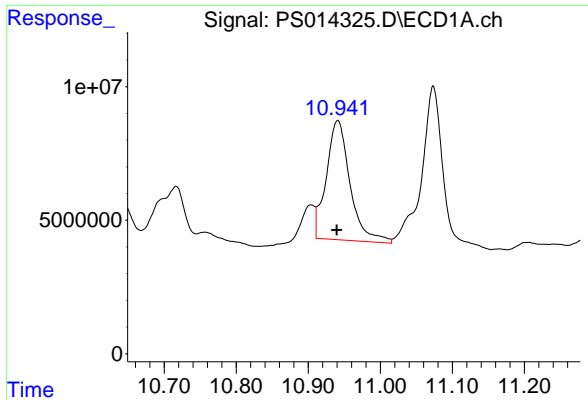
#13 2,4-DB
 R.T.: 9.661 min
 Delta R.T.: 0.010 min
 Response: 3258417
 Conc: 9.19 ng/ml



#14 DINOSEB
 R.T.: 11.073 min
 Delta R.T.: -0.037 min
 Response: 123000581
 Conc: 21.52 ng/ml

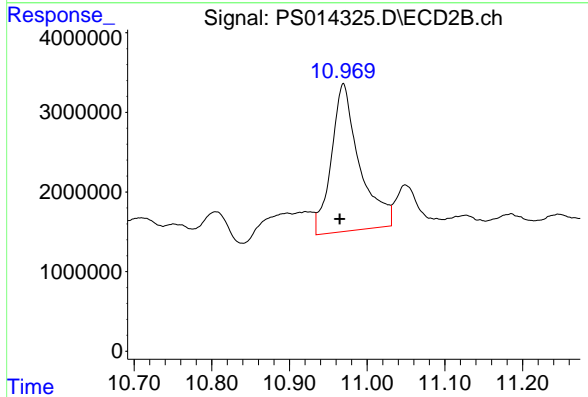


#14 DINOSEB
 R.T.: 9.990 min
 Delta R.T.: 0.012 min
 Response: 16670079
 Conc: 9.22 ng/ml

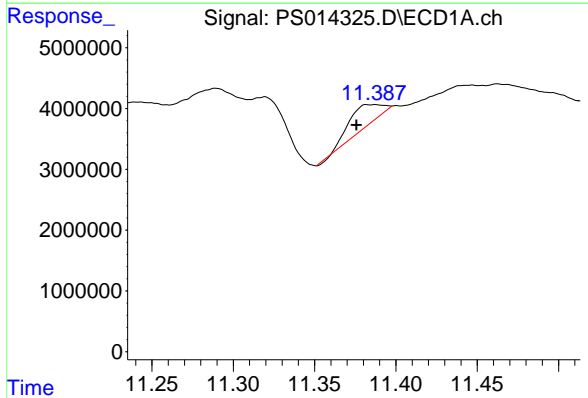


#15 Picloram
 R.T.: 10.941 min
 Delta R.T.: 0.002 min
 Response: 102331739
 Conc: 9.80 ng/ml

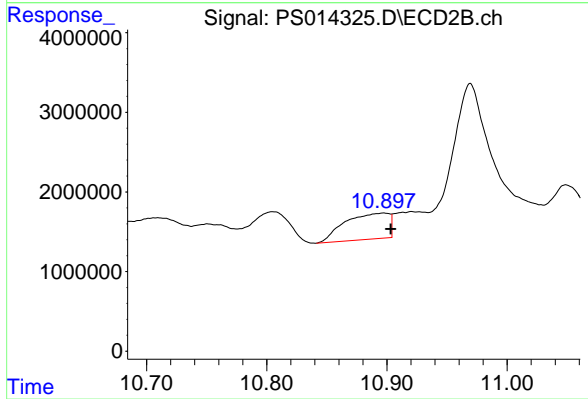
Instrument :
 ECD_S
 ClientSampleId :



#15 Picloram
 R.T.: 10.969 min
 Delta R.T.: 0.005 min
 Response: 46485614
 Conc: 12.25 ng/ml



#16 DCPA
 R.T.: 11.387 min
 Delta R.T.: 0.012 min
 Response: 4622491
 Conc: N.D.



#16 DCPA
 R.T.: 10.898 min
 Delta R.T.: -0.006 min
 Response: 8394628
 Conc: 2.05 ng/ml