

Data Path : Z:\pestpcbsrv\HPCHEM1\ECD_S\Data\PS032321\
 Data File : PS014327.D
 Signal(s) : Signal #1: ECD1A.ch Signal #2: ECD2B.ch
 Acq On : 23 Mar 2021 11:05
 Operator : DD\AJ
 Sample : M1718-03
 Misc :
 ALS Vial : 6 Sample Multiplier: 1

Instrument :
 ECD_S
 ClientSampleId :

Integration File signal 1: autoint1.e
 Integration File signal 2: autoint2.e
 Quant Time: Mar 23 12:16:28 2021
 Quant Method : Z:\pestpcbsrv\HPCHEM1\ECD_S\Method\PS031721.M
 Quant Title : 8080.M
 QLast Update : Thu Mar 18 02:23:19 2021
 Response via : Initial Calibration
 Integrator: ChemStation

Volume Inj. : 2 µl
 Signal #1 Phase : Rtx-CLPesticides Signal #2 Phase: Rtx-CLPesticides2
 Signal #1 Info : 30M x 0.32mm x0.5 Signal #2 Info : 30M x 0.32mm x 0.25µm

	Compound	RT#1	RT#2	Resp#1	Resp#2	ng/ml	ng/ml

System Monitoring Compounds							
4) S	2,4-DCAA	7.163	6.887	755.9E6	265.0E6	529.052	561.700
Target Compounds							
1) T	Dalapon	2.980	2.584	70568754	18932731	45.338	31.973 #
2) T	3,5-DICHL...	6.458f	6.077	9477259	26635833	4.909	35.774 #
3) T	4-Nitroph...	7.003	6.520	9324958	9437310	12.487	31.067 #
5) T	DICAMBA	7.381	7.062	22259505	4975497	4.139	2.484 #
6) T	MCP P	7.514	7.094f	17364444	4211201	4.176	2.529 #
7) T	MCPA	7.704	7.346	7979052	24310746	1.387	9.977 #
8) T	DICHLORPROP	7.986f	7.707	16266021	33806439	12.283	66.350 #
9) T	2,4-D	8.242	7.946	7638040	16865036	5.182	28.245 #
10) T	Pentachlo...	8.627f	8.409	63524812	3245870	3.191	<MDL #
11) T	2,4,5-TP ...	9.138	8.730	9051252	113.9E6	1.175	41.855 #
12) T	2,4,5-T	9.418	9.113	10130915	5692133	1.302	2.135 #
13) T	2,4-DB	9.944	9.661	70150291	1636389	45.364	4.614 #
14) T	DINOSEB	11.072	9.993	132.1E6	18518217	23.119	10.248 #
15) T	Picloram	10.948	10.982	16797197	17268483	1.609	4.552 #
16) T	DCPA	0.000	10.892	0	9865280	N.D.	2.405

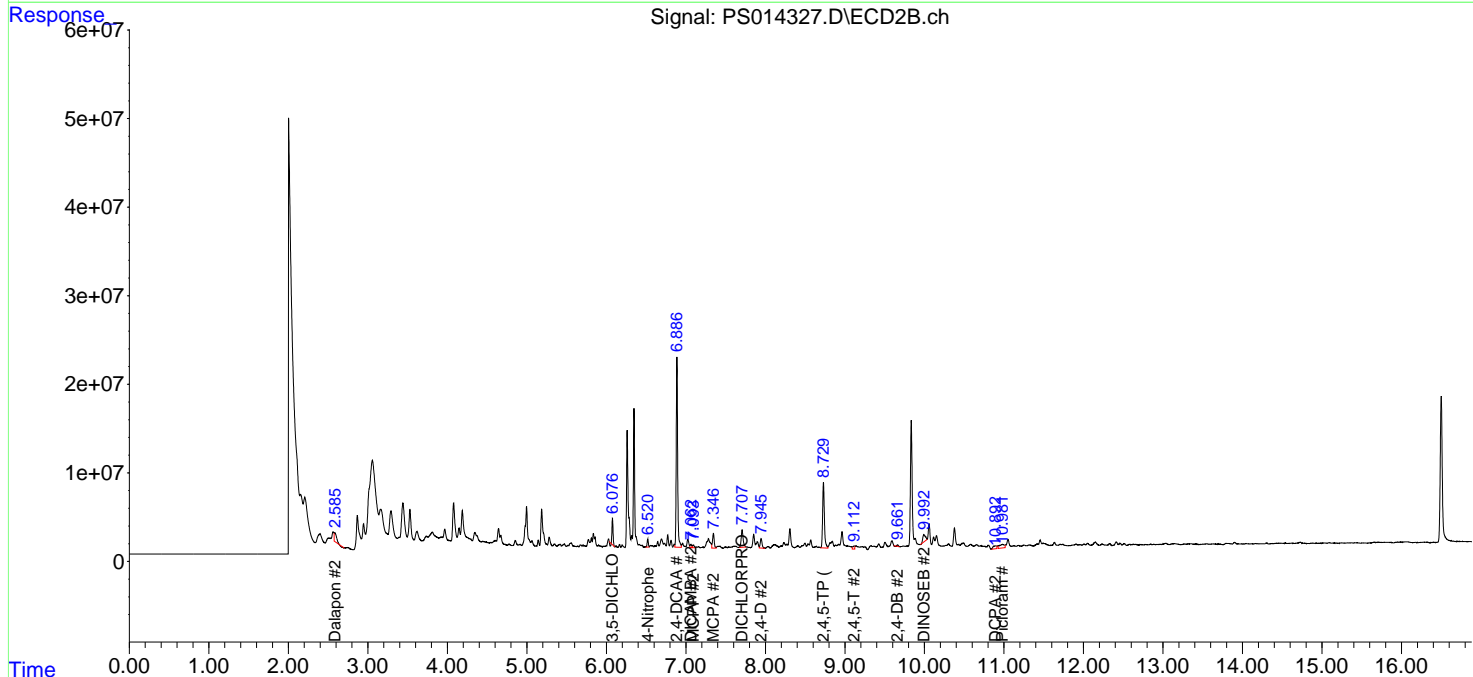
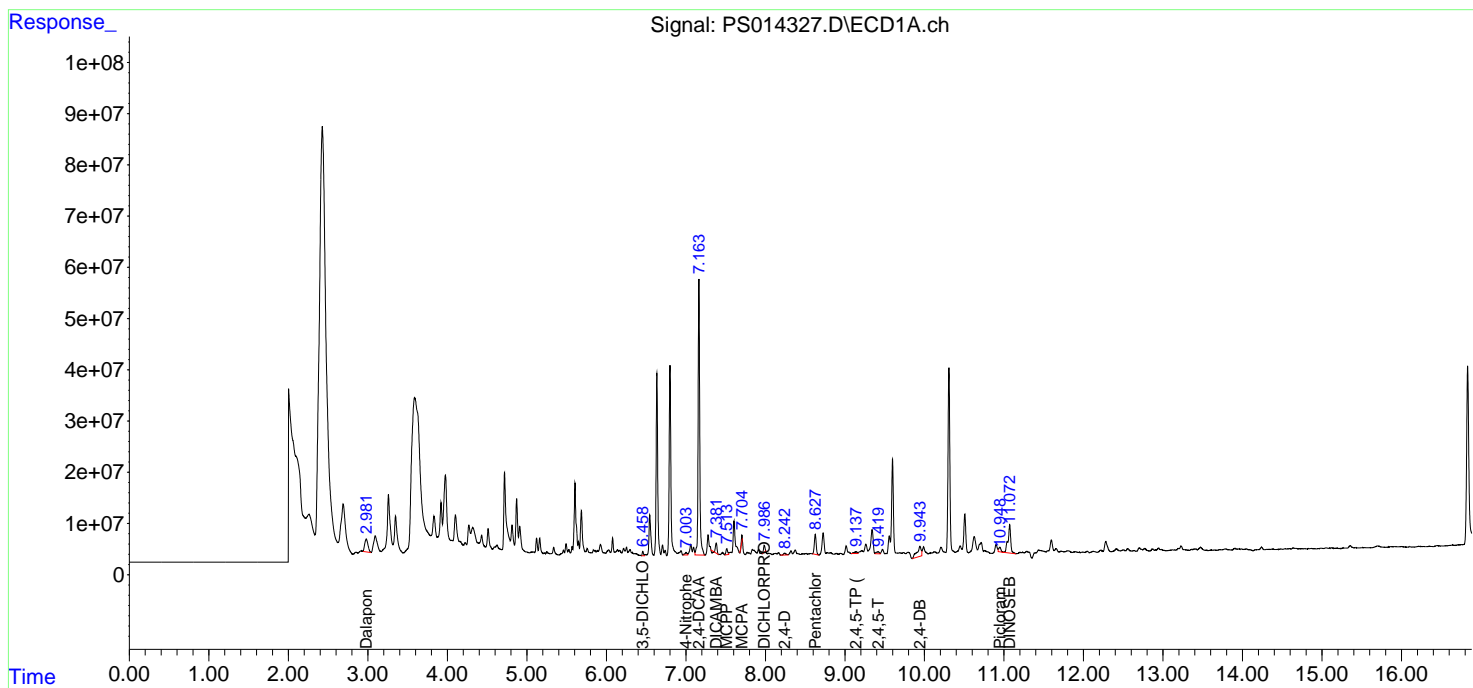
(f)=RT Delta > 1/2 Window (#)=Amounts differ by > 25% (m)=manual int.

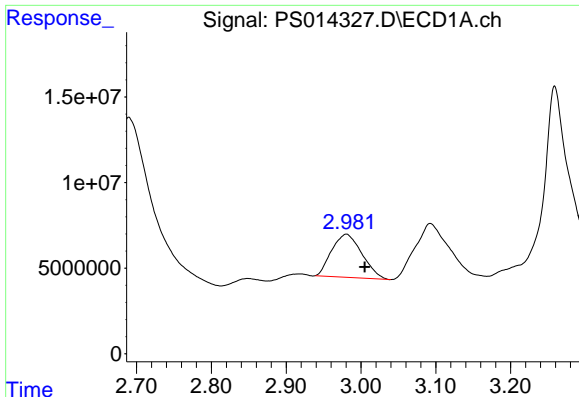
Data Path : Z:\pestpcbsrv\HPCHEM1\ECD_S\Data\PS032321\
 Data File : PS014327.D
 Signal(s) : Signal #1: ECD1A.ch Signal #2: ECD2B.ch
 Acq On : 23 Mar 2021 11:05
 Operator : DD\AJ
 Sample : M1718-03
 Misc :
 ALS Vial : 6 Sample Multiplier: 1

Instrument :
 ECD_S
 ClientSampled :

Integration File signal 1: autoint1.e
 Integration File signal 2: autoint2.e
 Quant Time: Mar 23 12:16:28 2021
 Quant Method : Z:\pestpcbsrv\HPCHEM1\ECD_S\Method\PS031721.M
 Quant Title : 8080.M
 QLast Update : Thu Mar 18 02:23:19 2021
 Response via : Initial Calibration
 Integrator: ChemStation

Volume Inj. : 2 µl
 Signal #1 Phase : Rtx-CLPesticides Signal #2 Phase: Rtx-CLPesticides2
 Signal #1 Info : 30M x 0.32mm x0.5 Signal #2 Info : 30M x 0.32mm x 0.25µm

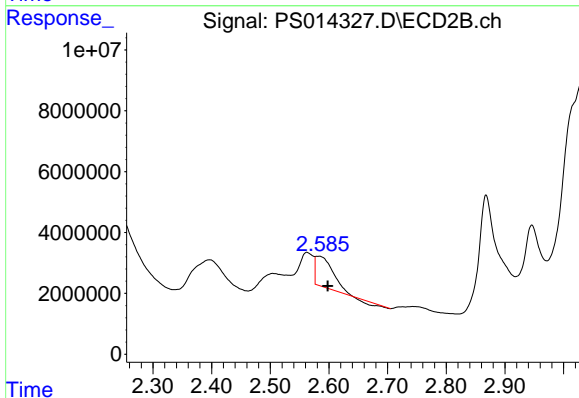




#1 Dalapon

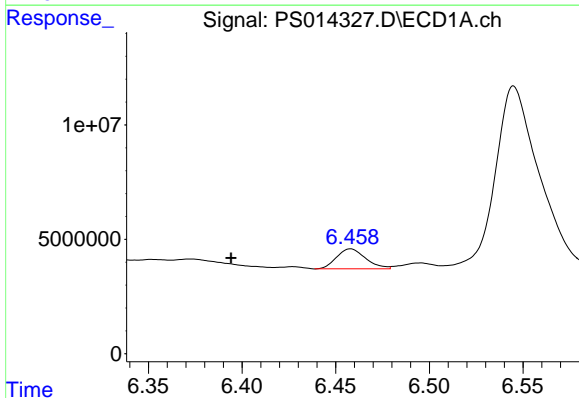
R.T.: 2.980 min
 Delta R.T.: -0.025 min
 Response: 70568754
 Conc: 45.34 ng/ml

Instrument :
 ECD_S
 ClientSampleId :



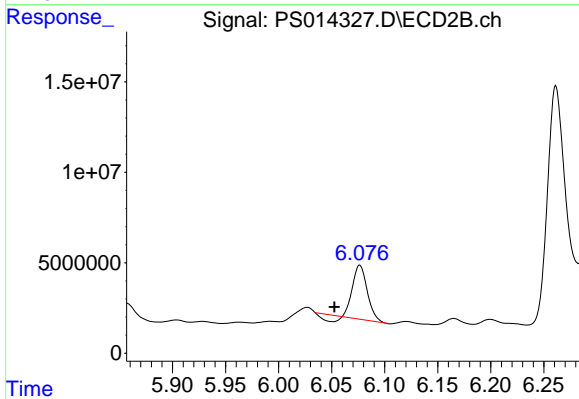
#1 Dalapon

R.T.: 2.584 min
 Delta R.T.: -0.014 min
 Response: 18932731
 Conc: 31.97 ng/ml



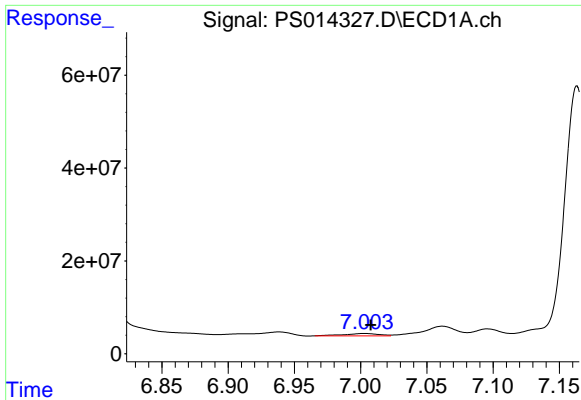
#2 3,5-DICHLOROBENZOIC ACID

R.T.: 6.458 min
 Delta R.T.: 0.064 min
 Response: 9477259
 Conc: 4.91 ng/ml



#2 3,5-DICHLOROBENZOIC ACID

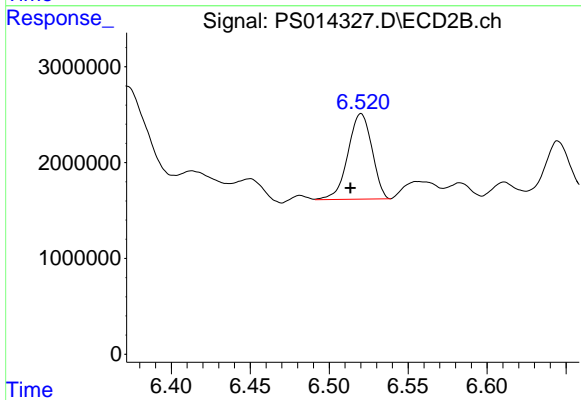
R.T.: 6.077 min
 Delta R.T.: 0.024 min
 Response: 26635833
 Conc: 35.77 ng/ml



#3 4-Nitrophenol

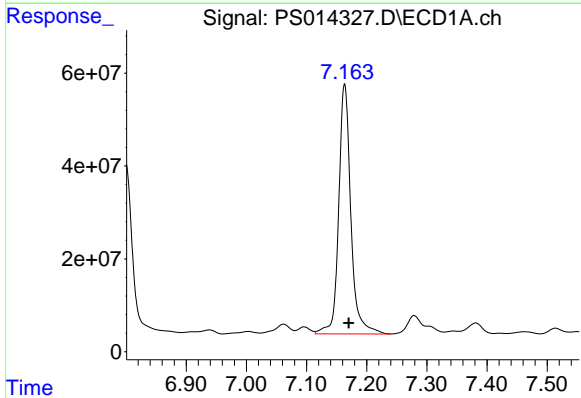
R.T.: 7.003 min
Delta R.T.: -0.005 min
Response: 9324958
Conc: 12.49 ng/ml

Instrument :
ECD_S
ClientSampleId :



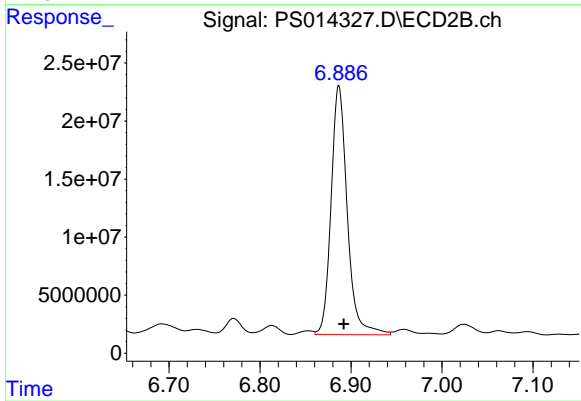
#3 4-Nitrophenol

R.T.: 6.520 min
Delta R.T.: 0.007 min
Response: 9437310
Conc: 31.07 ng/ml



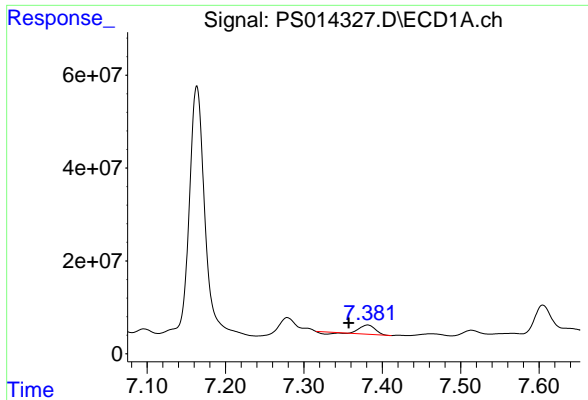
#4 2,4-DCAA

R.T.: 7.163 min
Delta R.T.: -0.007 min
Response: 755932251
Conc: 529.05 ng/ml



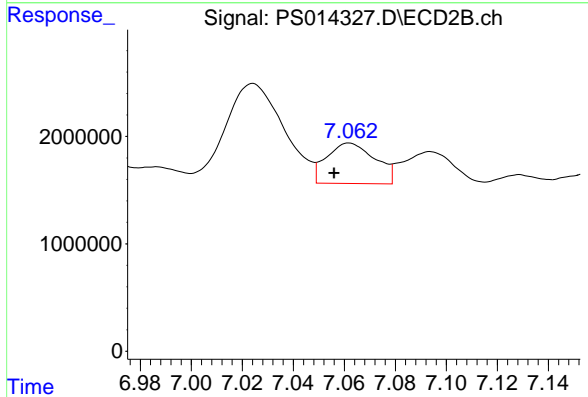
#4 2,4-DCAA

R.T.: 6.887 min
Delta R.T.: -0.005 min
Response: 264992735
Conc: 561.70 ng/ml

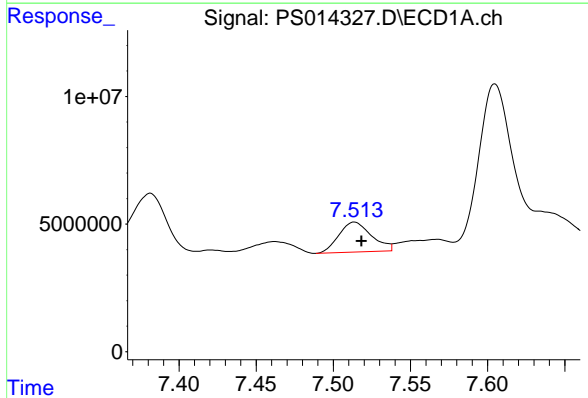


#5 DICAMBA
 R.T.: 7.381 min
 Delta R.T.: 0.024 min
 Response: 22259505
 Conc: 4.14 ng/ml

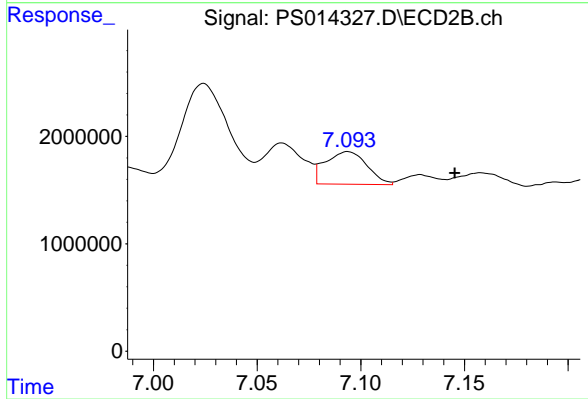
Instrument :
 ECD_S
 ClientSampleId :



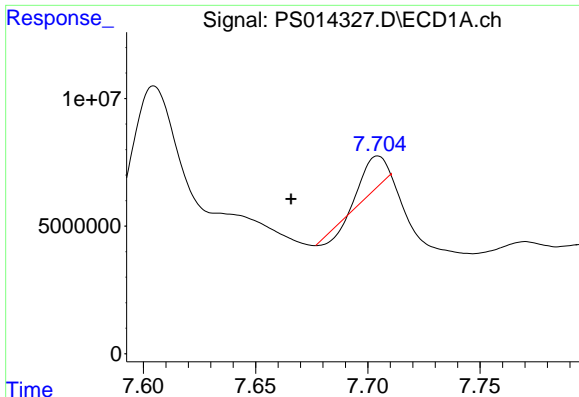
#5 DICAMBA
 R.T.: 7.062 min
 Delta R.T.: 0.006 min
 Response: 4975497
 Conc: 2.48 ng/ml



#6 MCP
 R.T.: 7.514 min
 Delta R.T.: -0.005 min
 Response: 17364444
 Conc: 4.18 ug/ml



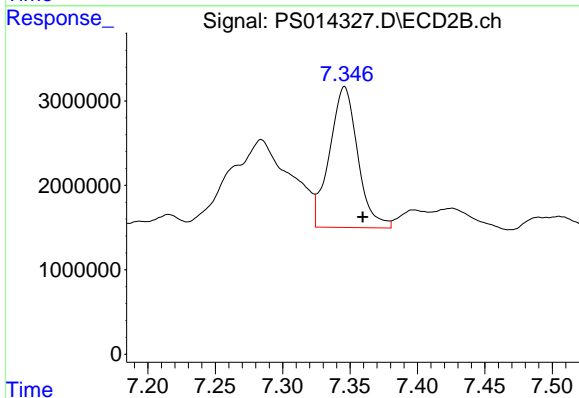
#6 MCP
 R.T.: 7.094 min
 Delta R.T.: -0.052 min
 Response: 4211201
 Conc: 2.53 ug/ml



#7 MCPA

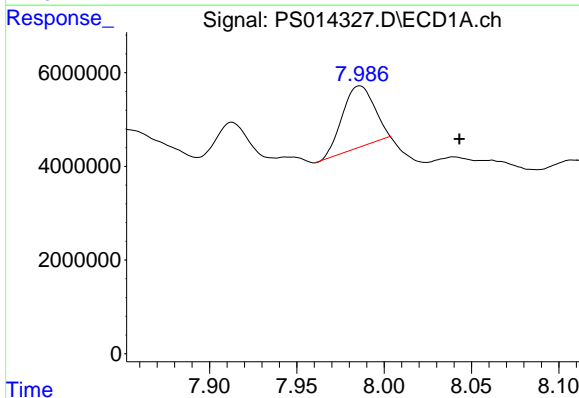
R.T.: 7.704 min
 Delta R.T.: 0.039 min
 Response: 7979052
 Conc: 1.39 ug/ml

Instrument :
 ECD_S
 ClientSampleId :



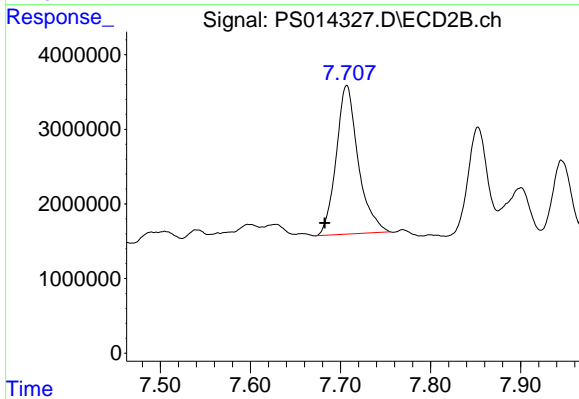
#7 MCPA

R.T.: 7.346 min
 Delta R.T.: -0.013 min
 Response: 24310746
 Conc: 9.98 ug/ml



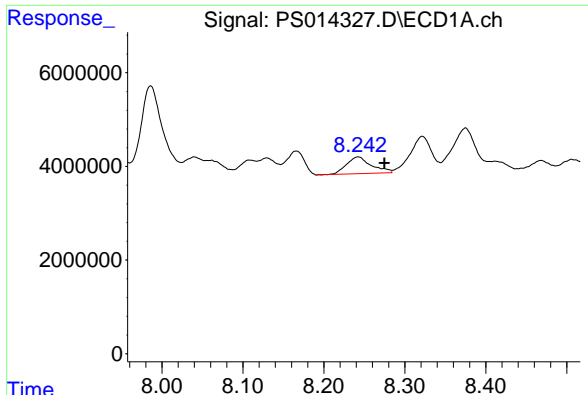
#8 DICHLORPROP

R.T.: 7.986 min
 Delta R.T.: -0.057 min
 Response: 16266021
 Conc: 12.28 ng/ml



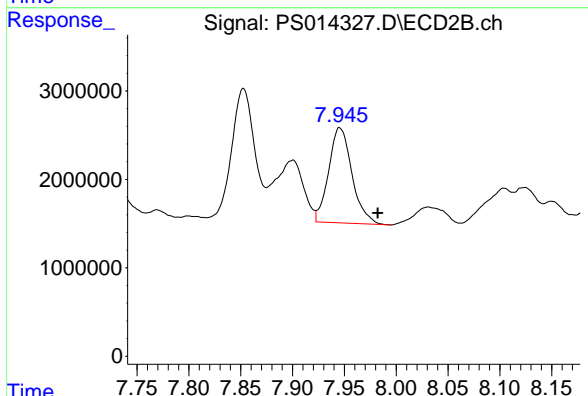
#8 DICHLORPROP

R.T.: 7.707 min
 Delta R.T.: 0.024 min
 Response: 33806439
 Conc: 66.35 ng/ml

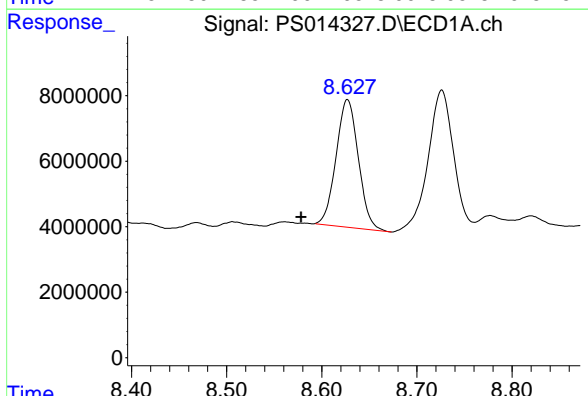


#9 2,4-D
 R.T.: 8.242 min
 Delta R.T.: -0.033 min
 Response: 7638040
 Conc: 5.18 ng/ml

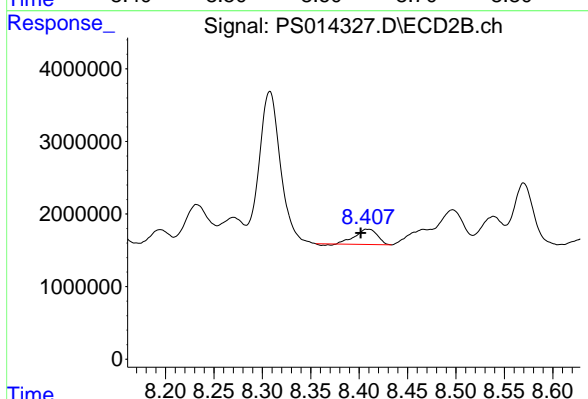
Instrument :
 ECD_S
 ClientSampleId :



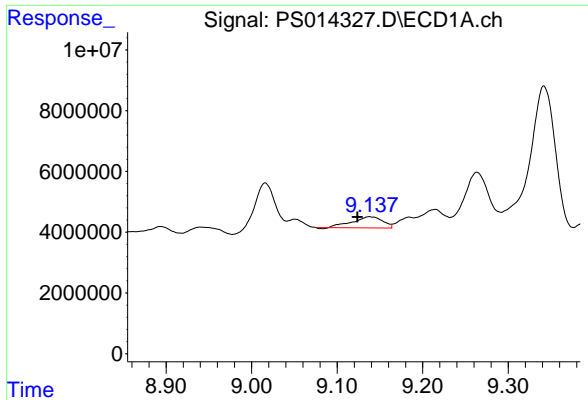
#9 2,4-D
 R.T.: 7.946 min
 Delta R.T.: -0.037 min
 Response: 16865036
 Conc: 28.25 ng/ml



#10 Pentachlorophenol
 R.T.: 8.627 min
 Delta R.T.: 0.049 min
 Response: 63524812
 Conc: 3.19 ng/ml

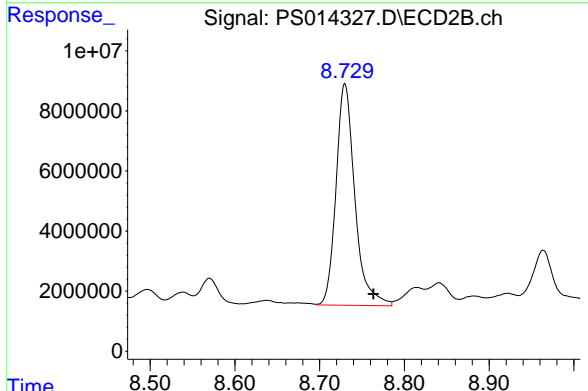


#10 Pentachlorophenol
 R.T.: 8.409 min
 Delta R.T.: 0.007 min
 Response: 3245870
 Conc: N.D.

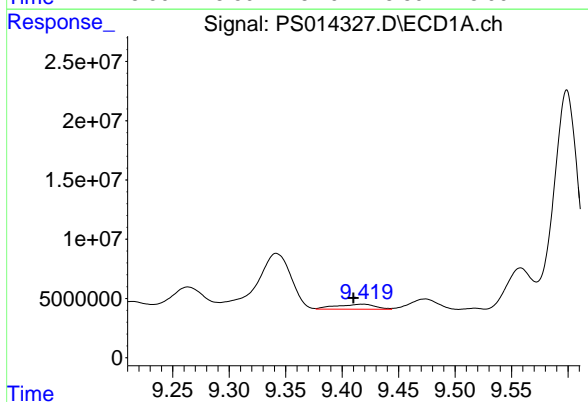


#11 2,4,5-TP (SILVEX)
 R.T.: 9.138 min
 Delta R.T.: 0.015 min
 Response: 9051252
 Conc: 1.17 ng/ml

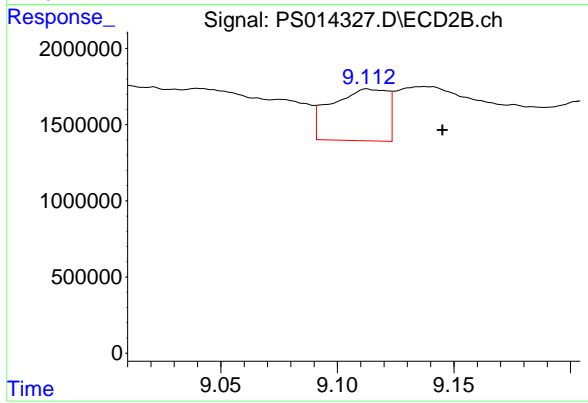
Instrument :
 ECD_S
 ClientSampleId :



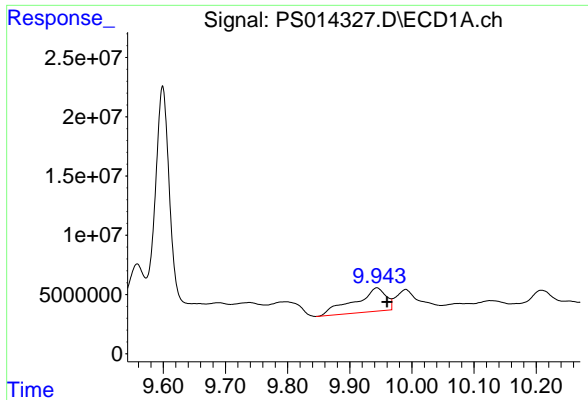
#11 2,4,5-TP (SILVEX)
 R.T.: 8.730 min
 Delta R.T.: -0.034 min
 Response: 113873984
 Conc: 41.86 ng/ml



#12 2,4,5-T
 R.T.: 9.418 min
 Delta R.T.: 0.008 min
 Response: 10130915
 Conc: 1.30 ng/ml

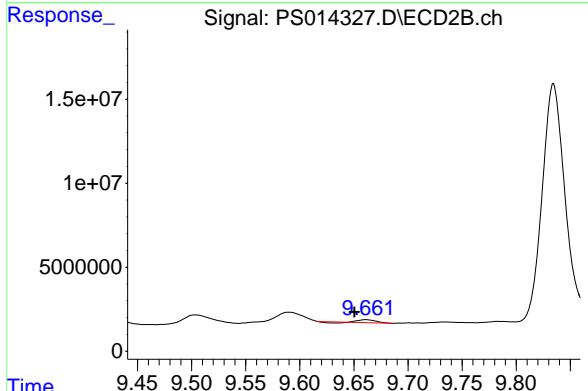


#12 2,4,5-T
 R.T.: 9.113 min
 Delta R.T.: -0.032 min
 Response: 5692133
 Conc: 2.14 ng/ml

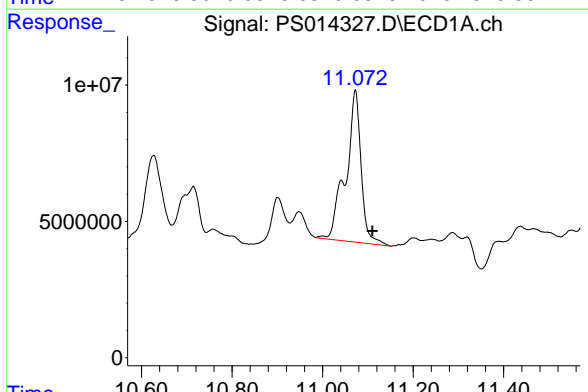


#13 2,4-DB
 R.T.: 9.944 min
 Delta R.T.: -0.016 min
 Response: 70150291
 Conc: 45.36 ng/ml

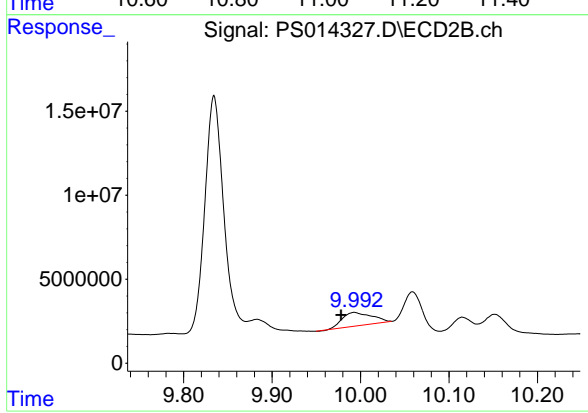
Instrument :
 ECD_S
 ClientSampleId :



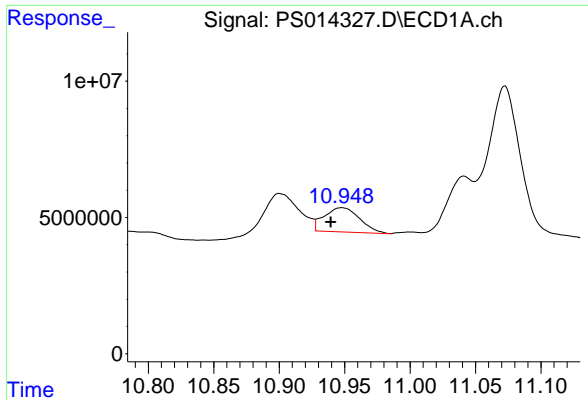
#13 2,4-DB
 R.T.: 9.661 min
 Delta R.T.: 0.011 min
 Response: 1636389
 Conc: 4.61 ng/ml



#14 DINOSEB
 R.T.: 11.072 min
 Delta R.T.: -0.038 min
 Response: 132143759
 Conc: 23.12 ng/ml



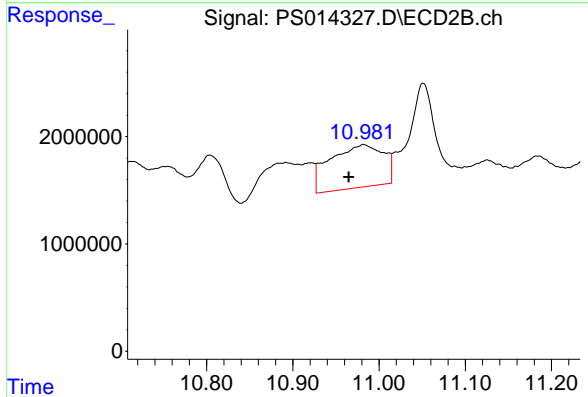
#14 DINOSEB
 R.T.: 9.993 min
 Delta R.T.: 0.015 min
 Response: 18518217
 Conc: 10.25 ng/ml



#15 Picloram

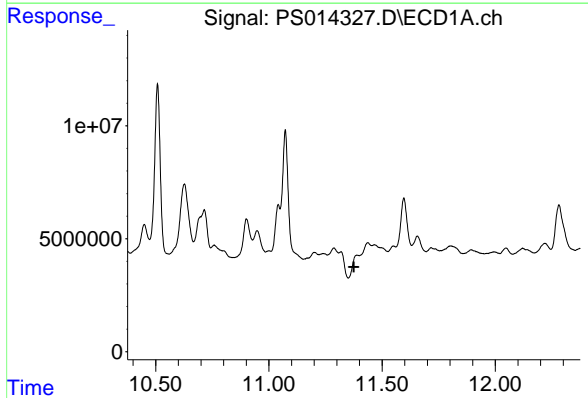
R.T.: 10.948 min
 Delta R.T.: 0.008 min
 Response: 16797197
 Conc: 1.61 ng/ml

Instrument :
 ECD_S
 ClientSampleId :



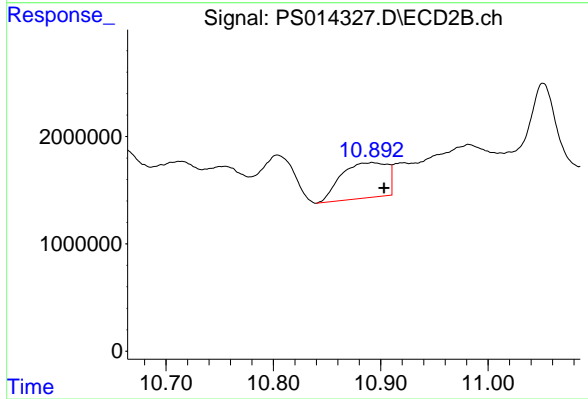
#15 Picloram

R.T.: 10.982 min
 Delta R.T.: 0.017 min
 Response: 17268483
 Conc: 4.55 ng/ml



#16 DCPA

R.T.: 0.000 min
 Exp R.T. : 11.376 min
 Response: 0
 Conc: N.D.



#16 DCPA

R.T.: 10.892 min
 Delta R.T.: -0.011 min
 Response: 9865280
 Conc: 2.41 ng/ml