

Data Path : Z:\pestpcbsrv\HPCHEM1\ECD_S\Data\PS032422\
 Data File : PS018731.D
 Signal(s) : Signal #1: ECD1A.ch Signal #2: ECD2B.ch
 Acq On : 24 Mar 2022 09:41
 Operator : AJ\MA
 Sample : I.BLK
 Misc :
 ALS Vial : 2 Sample Multiplier: 1

Instrument :
 ECD_S
 ClientSampleId :

Integration File signal 1: autoint1.e
 Integration File signal 2: autoint2.e
 Quant Time: Mar 24 15:32:53 2022
 Quant Method : Z:\pestpcbsrv\HPCHEM1\ECD_S\Method\PS031422.M
 Quant Title : 8080.M
 QLast Update : Mon Mar 14 11:41:05 2022
 Response via : Initial Calibration
 Integrator: ChemStation

Volume Inj. : 2 µl
 Signal #1 Phase : Rtx-CLPesticides Signal #2 Phase: Rtx-CLPesticides2
 Signal #1 Info : 30M x 0.32mm x0.5 Signal #2 Info : 30M x 0.32mm x 0.25µm

	Compound	RT#1	RT#2	Resp#1	Resp#2	ng/ml	ng/ml

System Monitoring Compounds							
4) S	2,4-DCAA	7.228	6.808	1281.7E6	359.3E6	450.353	510.642
Target Compounds							
8) T	DICHLORPROP	0.000	7.620	0	7532115	N.D.	9.515
9) T	2,4-D	8.411f	0.000	7494773	0	2.237	N.D. #
11) T	2,4,5-TP ...	0.000	8.638f	0	3294440	N.D.	<MDL
12) T	2,4,5-T	0.000	9.112f	0	1874044	N.D.	<MDL
15) T	Picloram	11.032	10.878	31447300	8847746	1.530	1.664
16) T	DCPA	0.000	10.878f	0	8847746	N.D.	1.682

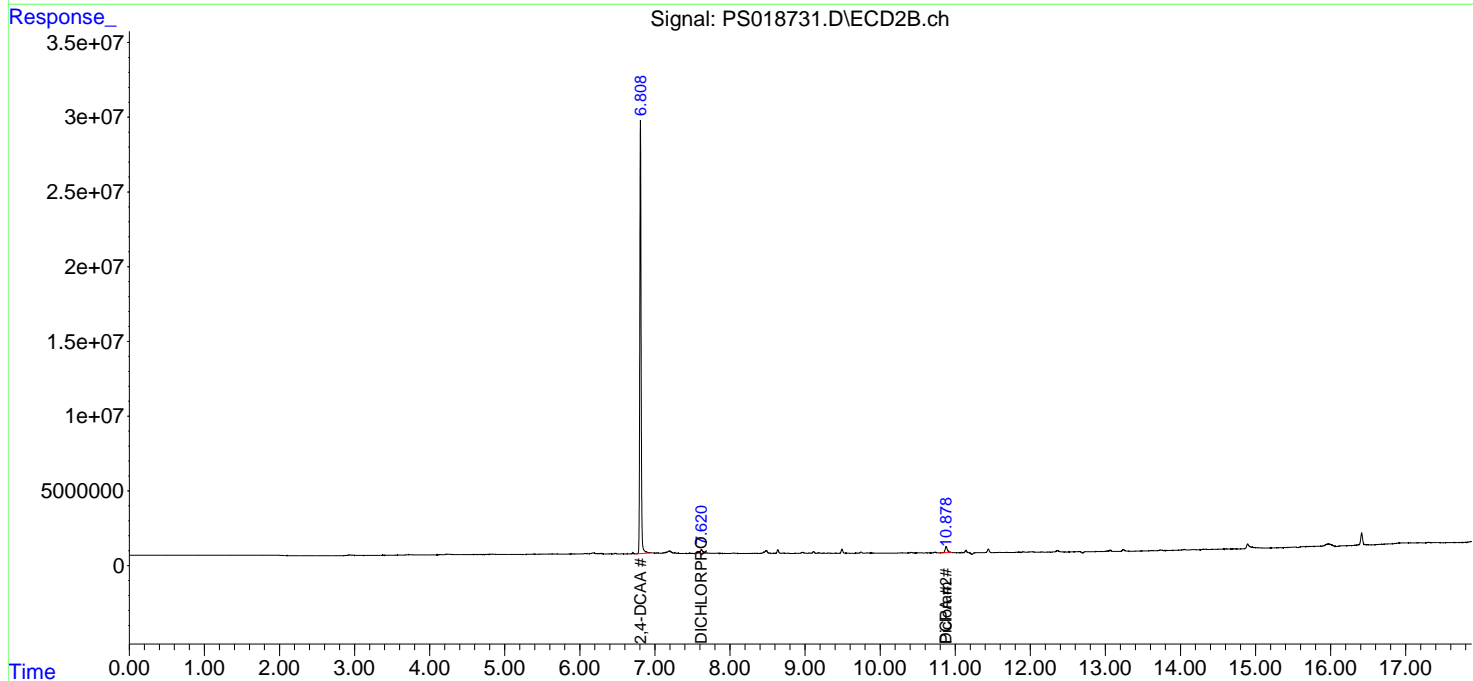
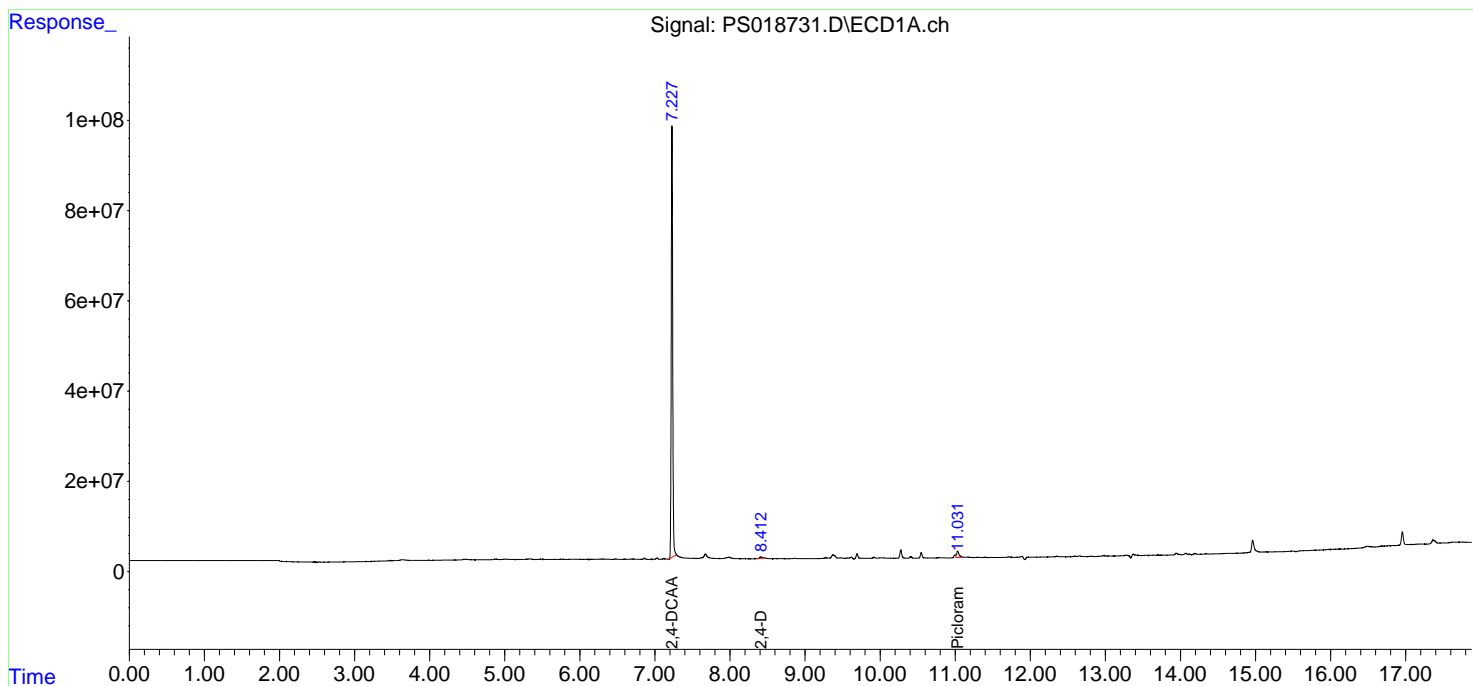
(f)=RT Delta > 1/2 Window (#)=Amounts differ by > 25% (m)=manual int.

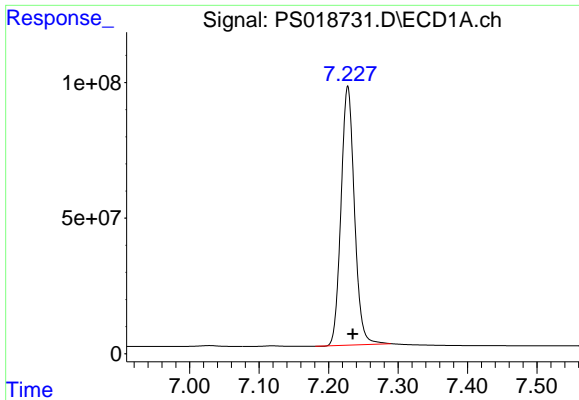
Data Path : Z:\pestpcbsrv\HPCHEM1\ECD_S\Data\PS032422\
 Data File : PS018731.D
 Signal(s) : Signal #1: ECD1A.ch Signal #2: ECD2B.ch
 Acq On : 24 Mar 2022 09:41
 Operator : AJ\MA
 Sample : I.BLK
 Misc :
 ALS Vial : 2 Sample Multiplier: 1

Instrument :
 ECD_S
 ClientSampleId :

Integration File signal 1: autoint1.e
 Integration File signal 2: autoint2.e
 Quant Time: Mar 24 15:32:53 2022
 Quant Method : Z:\pestpcbsrv\HPCHEM1\ECD_S\Method\PS031422.M
 Quant Title : 8080.M
 QLast Update : Mon Mar 14 11:41:05 2022
 Response via : Initial Calibration
 Integrator: ChemStation

Volume Inj. : 2 µl
 Signal #1 Phase : Rtx-CLPesticides Signal #2 Phase: Rtx-CLPesticides2
 Signal #1 Info : 30M x 0.32mm x 0.5 Signal #2 Info : 30M x 0.32mm x 0.25µm

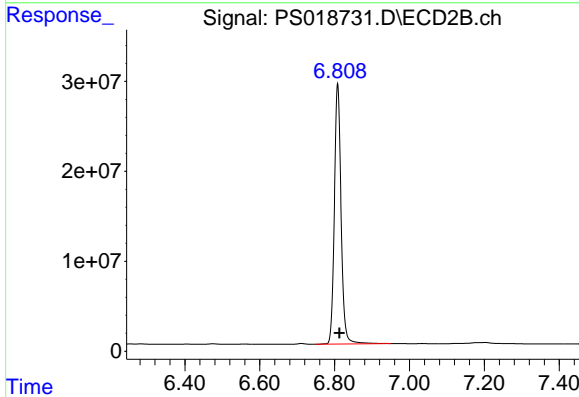




#4 2,4-DCAA

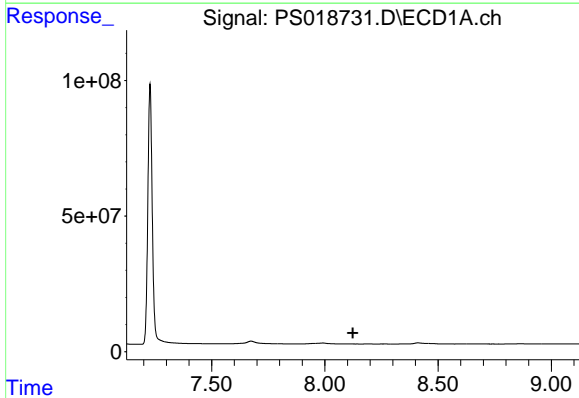
R.T.: 7.228 min
 Delta R.T.: -0.007 min
 Response: 1281668303
 Conc: 450.35 ng/ml

Instrument :
 ECD_S
 ClientSampleId :



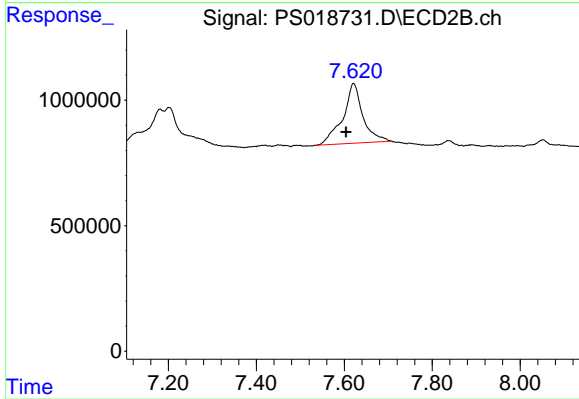
#4 2,4-DCAA

R.T.: 6.808 min
 Delta R.T.: -0.005 min
 Response: 359315518
 Conc: 510.64 ng/ml



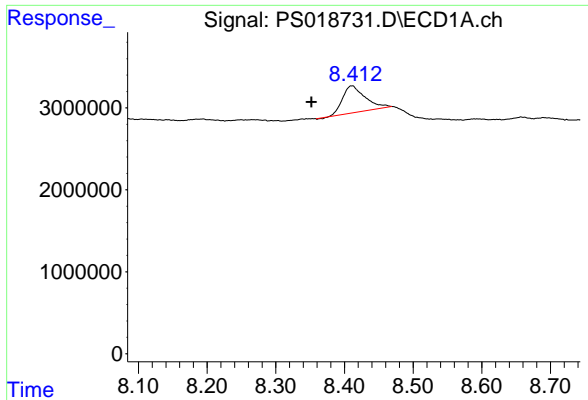
#8 DICHLORPROP

R.T.: 0.000 min
 Exp R.T. : 8.124 min
 Response: 0
 Conc: N.D.



#8 DICHLORPROP

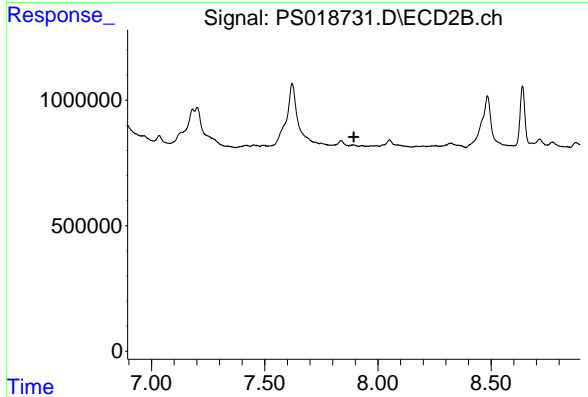
R.T.: 7.620 min
 Delta R.T.: 0.016 min
 Response: 7532115
 Conc: 9.51 ng/ml



#9 2,4-D

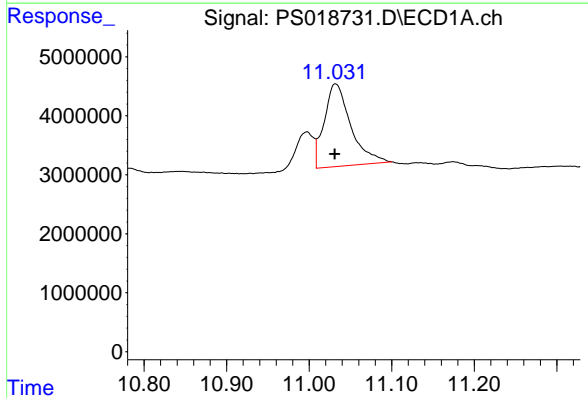
R.T.: 8.411 min
 Delta R.T.: 0.059 min
 Response: 7494773
 Conc: 2.24 ng/ml

Instrument :
 ECD_S
 ClientSampleId :



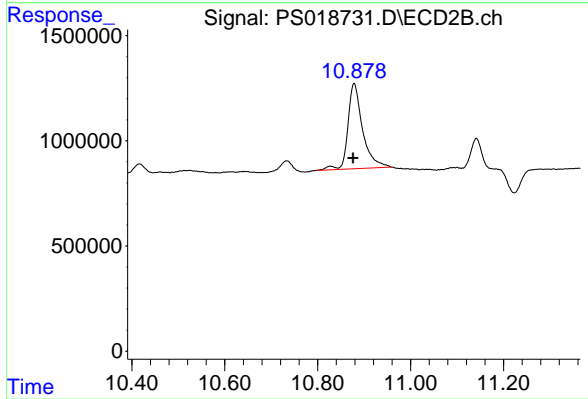
#9 2,4-D

R.T.: 0.000 min
 Exp R.T. : 7.894 min
 Response: 0
 Conc: N.D.



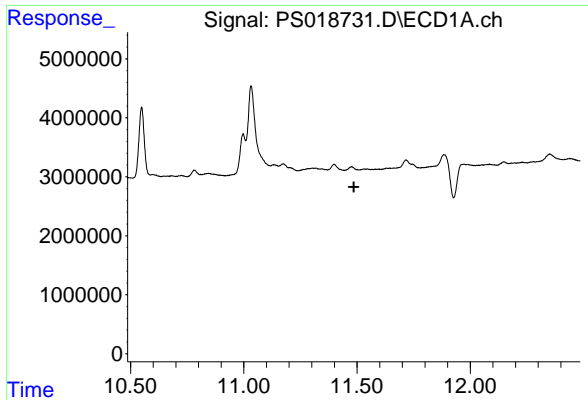
#15 Picloram

R.T.: 11.032 min
 Delta R.T.: 0.000 min
 Response: 31447300
 Conc: 1.53 ng/ml



#15 Picloram

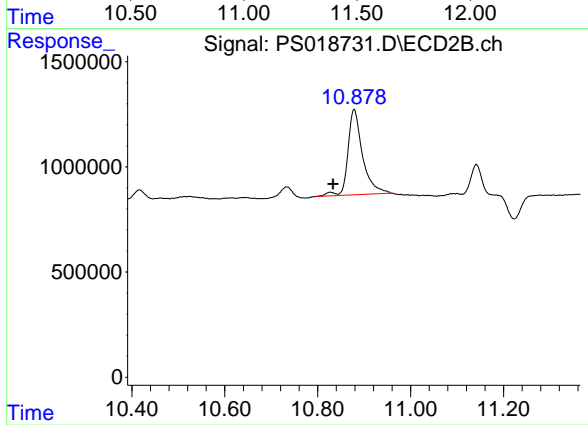
R.T.: 10.878 min
 Delta R.T.: 0.002 min
 Response: 8847746
 Conc: 1.66 ng/ml



#16 DCPA

R.T.: 0.000 min
Exp R.T.: 11.486 min
Response: 0
Conc: N.D.

Instrument :
ECD_S
ClientSampleId :



#16 DCPA

R.T.: 10.878 min
Delta R.T.: 0.045 min
Response: 8847746
Conc: 1.68 ng/ml