

Data Path : Z:\pestpcbsrv\HPCHEM1\ECD_S\Data\PS032422\
 Data File : PS018734.D
 Signal(s) : Signal #1: ECD1A.ch Signal #2: ECD2B.ch
 Acq On : 24 Mar 2022 11:03
 Operator : AJ\MA
 Sample : PB143538BSD (Sig #1); PB143538BS (Sig #2)
 Misc :
 ALS Vial : 5 Sample Multiplier: 1

Instrument :
 ECD_S
 ClientSampleId :

Integration File signal 1: autoint1.e
 Integration File signal 2: autoint2.e
 Quant Time: Mar 24 15:33:24 2022
 Quant Method : Z:\pestpcbsrv\HPCHEM1\ECD_S\Method\PS031422.M
 Quant Title : 8080.M
 QLast Update : Mon Mar 14 11:41:05 2022
 Response via : Initial Calibration
 Integrator: ChemStation

Volume Inj. : 2 µl
 Signal #1 Phase : Rtx-CLPesticides Signal #2 Phase: Rtx-CLPesticides2
 Signal #1 Info : 30M x 0.32mm x0.5 Signal #2 Info : 30M x 0.32mm x 0.25µm

	Compound	RT#1	RT#2	Resp#1	Resp#2	ng/ml	ng/ml

System Monitoring Compounds							
4) S	2,4-DCAA	7.230	6.809	1418.2E6	345.8E6	498.344	491.440
Target Compounds							
1) T	Dalapon	3.029	2.532	1745.2E6	388.2E6	448.813	469.726
2) T	3,5-DICHL...	6.439	5.981	1831.3E6	492.9E6	475.212	471.134
3) T	4-Nitroph...	7.058	6.420	652.3E6	185.7E6	378.587	457.074
5) T	DICAMBA	7.423	6.976	5303.4E6	1437.5E6	486.249	482.617
6) T	MCP P	7.593	7.072	391.9E6	111.2E6	46.174	45.432
7) T	MCPA	7.742	7.285	558.8E6	160.7E6	46.205	46.013
8) T	DICHLORPROP	8.118	7.600	1329.3E6	374.6E6	482.615	473.221
9) T	2,4-D	8.347	7.890	1621.7E6	439.3E6	483.984	469.349
10) T	Pentachlo...	8.658	8.321	19182.2E6	5064.2E6	529.856	515.691
11) T	2,4,5-TP ...	9.211	8.682	7712.5E6	2172.9E6	507.125	498.140
12) T	2,4,5-T	9.495	9.059	7716.6E6	2053.3E6	516.547	495.709
13) T	2,4-DB	10.047	9.566	1422.6E6	267.2E6	520.052	470.629
14) T	DINOSEB	11.211	9.895	5468.0E6	1449.0E6	511.356	472.933
15) T	Picloram	11.028	10.873	10360.7E6	2569.8E6	504.027	483.393
16) T	DCPA	11.479	10.828	9775.9E6	2647.2E6	546.421	503.340

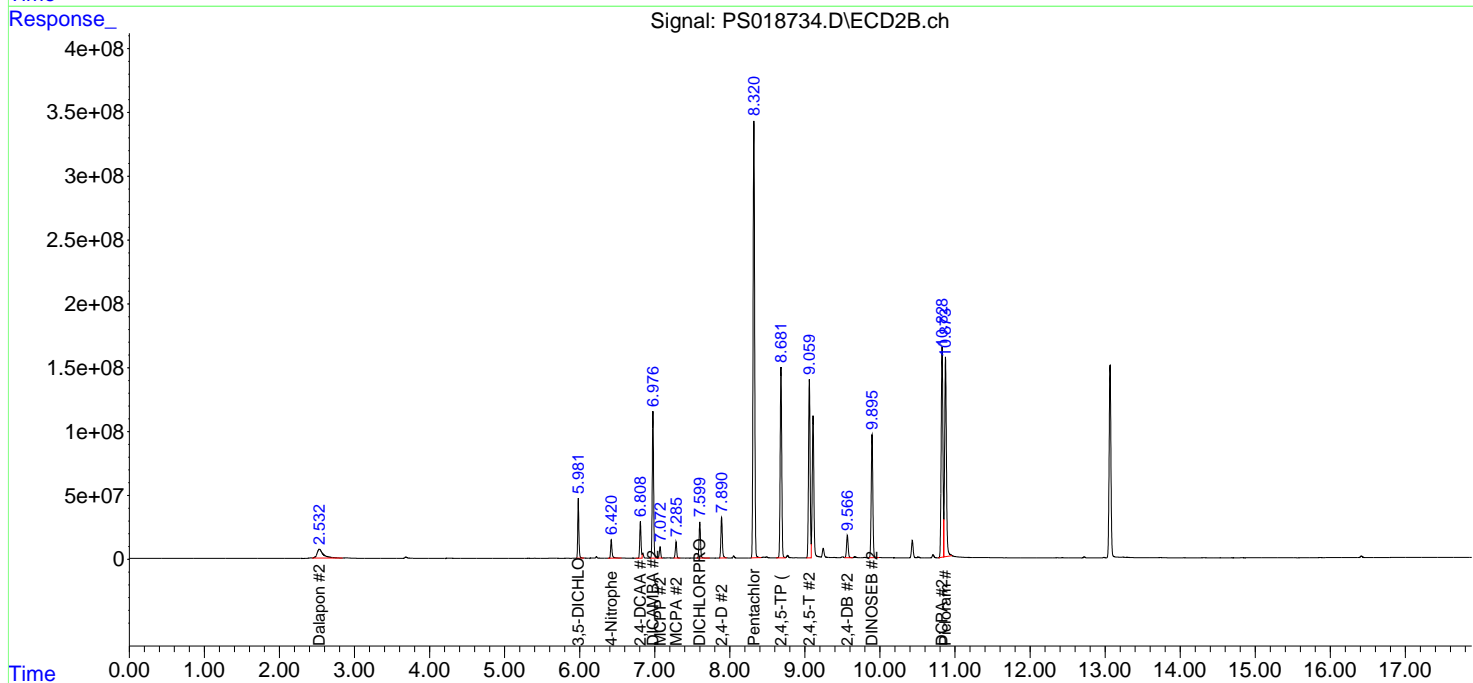
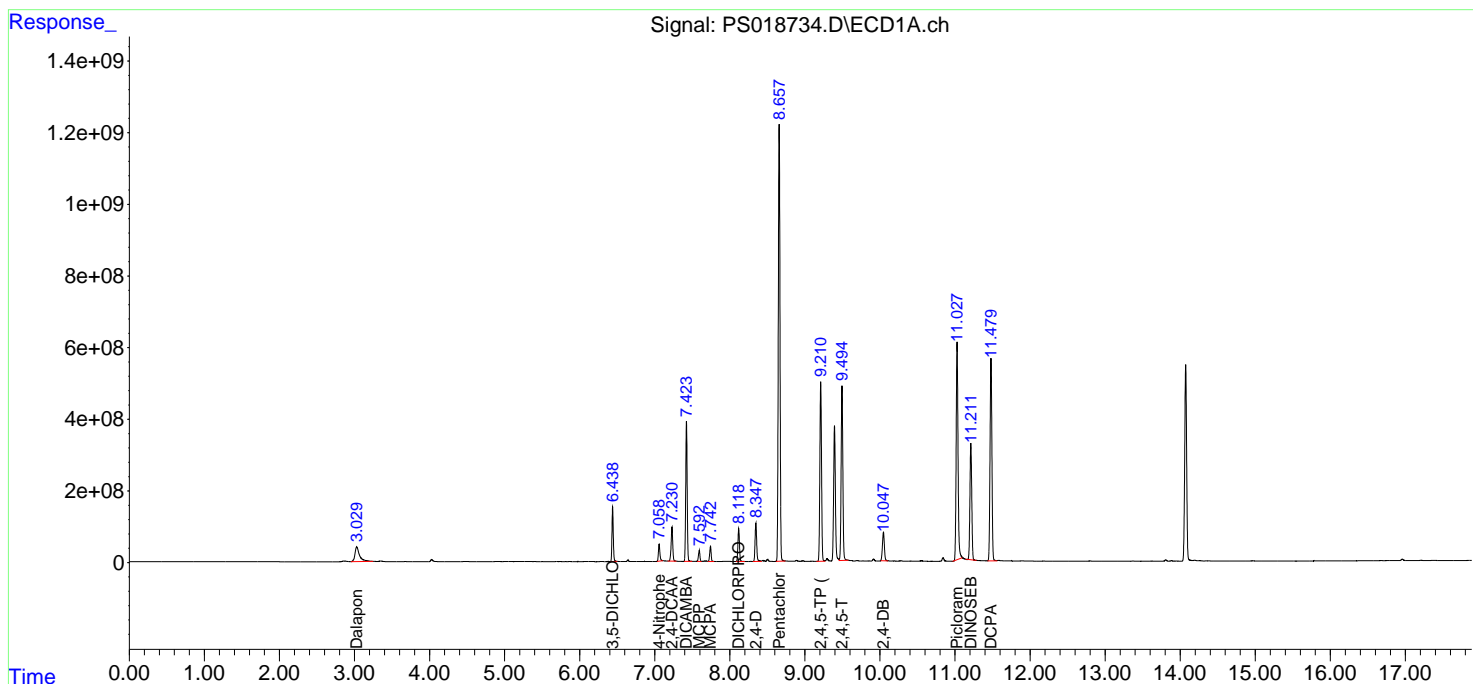
(f)=RT Delta > 1/2 Window (#)=Amounts differ by > 25% (m)=manual int.

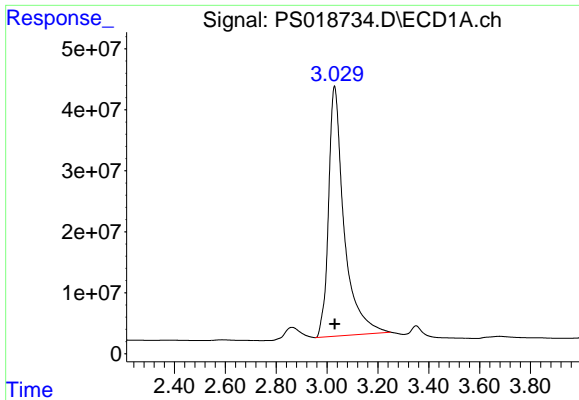
Data Path : Z:\pestpcbsrv\HPCHEM1\ECD_S\Data\PS032422\
 Data File : PS018734.D
 Signal(s) : Signal #1: ECD1A.ch Signal #2: ECD2B.ch
 Acq On : 24 Mar 2022 11:03
 Operator : AJ\MA
 Sample : PB143538BSD (Sig #1); PB143538BS (Sig #2)
 Misc :
 ALS Vial : 5 Sample Multiplier: 1

Instrument :
 ECD_S
 ClientSampleId :

Integration File signal 1: autoint1.e
 Integration File signal 2: autoint2.e
 Quant Time: Mar 24 15:33:24 2022
 Quant Method : Z:\pestpcbsrv\HPCHEM1\ECD_S\Method\PS031422.M
 Quant Title : 8080.M
 QLast Update : Mon Mar 14 11:41:05 2022
 Response via : Initial Calibration
 Integrator: ChemStation

Volume Inj. : 2 µl
 Signal #1 Phase : Rtx-CLPesticides Signal #2 Phase: Rtx-CLPesticides2
 Signal #1 Info : 30M x 0.32mm x0.5 Signal #2 Info : 30M x 0.32mm x 0.25µm

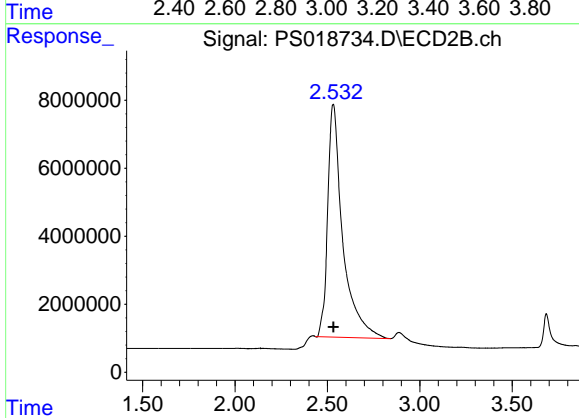




#1 Dalapon

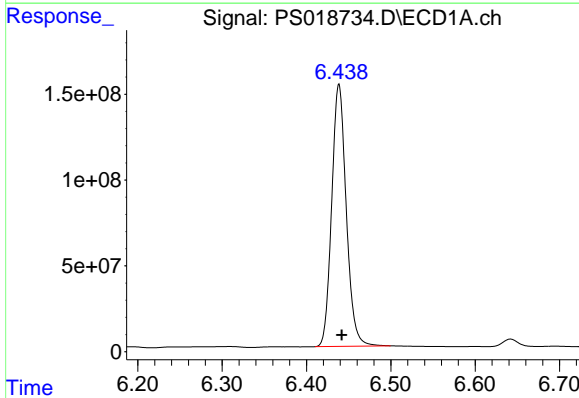
R.T.: 3.029 min
 Delta R.T.: 0.000 min
 Response: 1745206235
 Conc: 448.81 ng/ml

Instrument :
 ECD_S
 ClientSampleId :



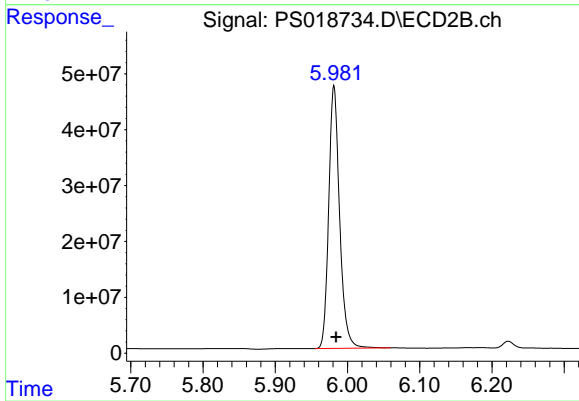
#1 Dalapon

R.T.: 2.532 min
 Delta R.T.: 0.000 min
 Response: 388212666
 Conc: 469.73 ng/ml



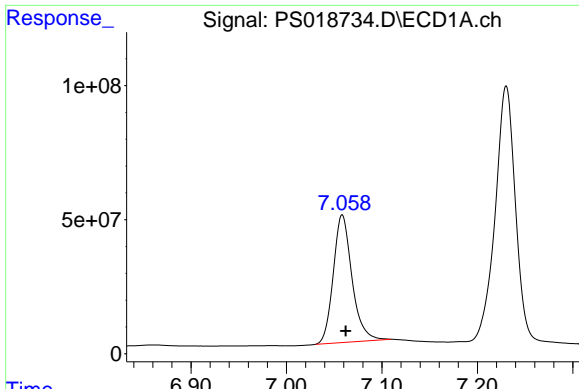
#2 3,5-DICHLOROBENZOIC ACID

R.T.: 6.439 min
 Delta R.T.: -0.003 min
 Response: 1831257580
 Conc: 475.21 ng/ml



#2 3,5-DICHLOROBENZOIC ACID

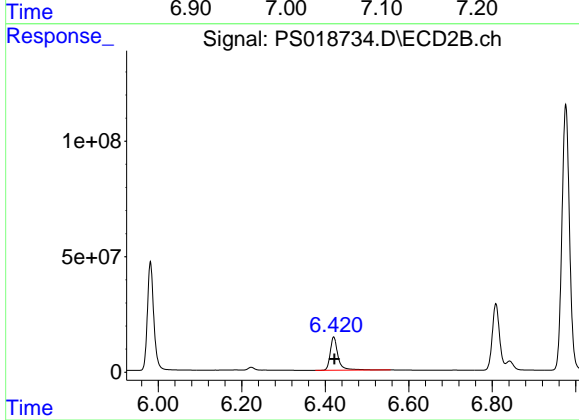
R.T.: 5.981 min
 Delta R.T.: -0.003 min
 Response: 492860519
 Conc: 471.13 ng/ml



#3 4-Nitrophenol

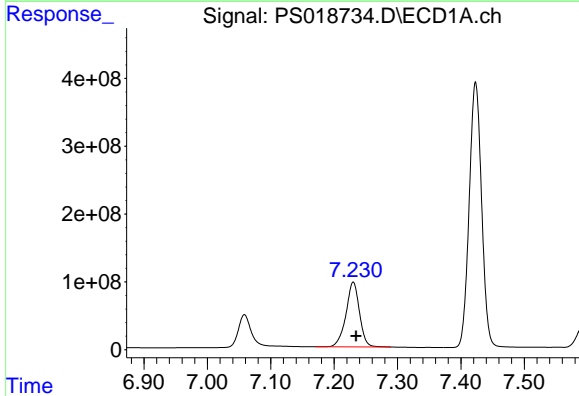
R.T.: 7.058 min
Delta R.T.: -0.004 min
Response: 652348044
Conc: 378.59 ng/ml

Instrument :
ECD_S
ClientSampleId :



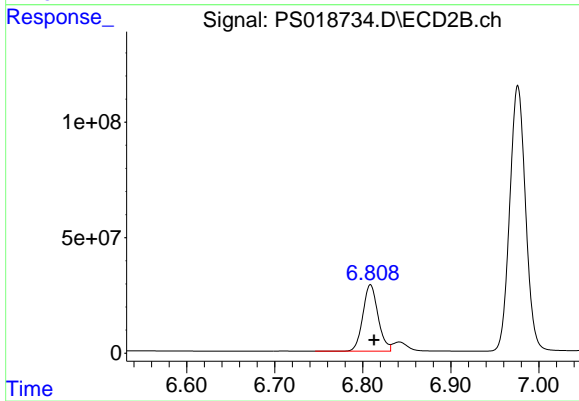
#3 4-Nitrophenol

R.T.: 6.420 min
Delta R.T.: -0.002 min
Response: 185697749
Conc: 457.07 ng/ml



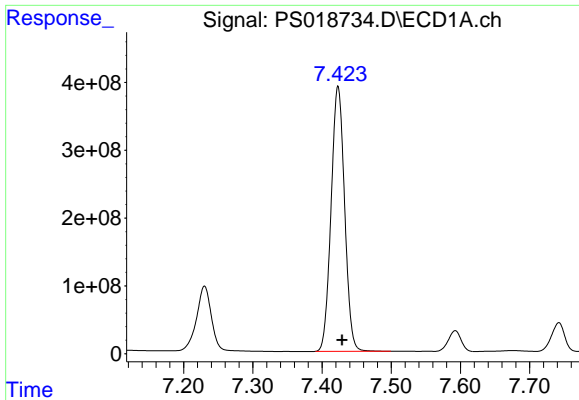
#4 2,4-DCAA

R.T.: 7.230 min
Delta R.T.: -0.005 min
Response: 1418244487
Conc: 498.34 ng/ml



#4 2,4-DCAA

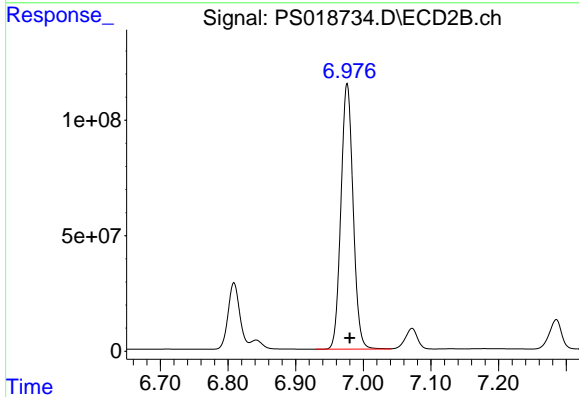
R.T.: 6.809 min
Delta R.T.: -0.004 min
Response: 345804166
Conc: 491.44 ng/ml



#5 DICAMBA

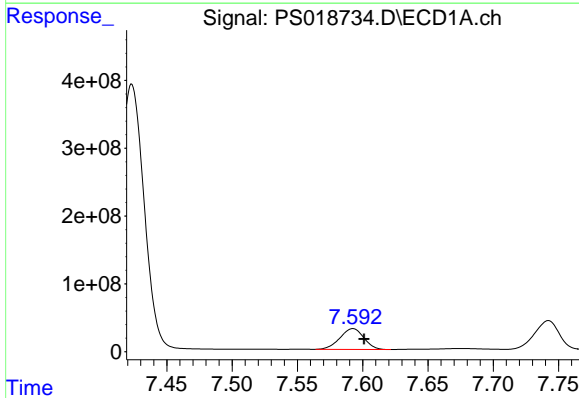
R.T.: 7.423 min
 Delta R.T.: -0.006 min
 Response: 5303390167
 Conc: 486.25 ng/ml

Instrument :
 ECD_S
 ClientSampleId :



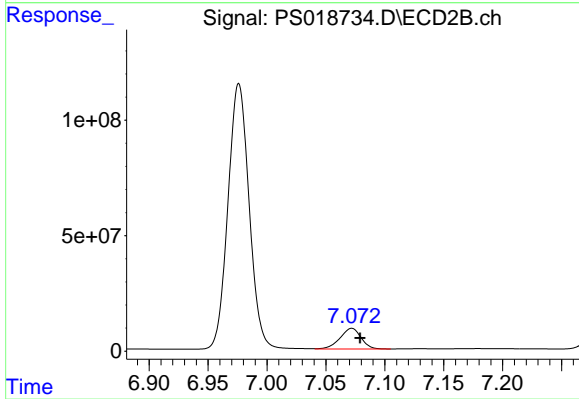
#5 DICAMBA

R.T.: 6.976 min
 Delta R.T.: -0.004 min
 Response: 1437500069
 Conc: 482.62 ng/ml



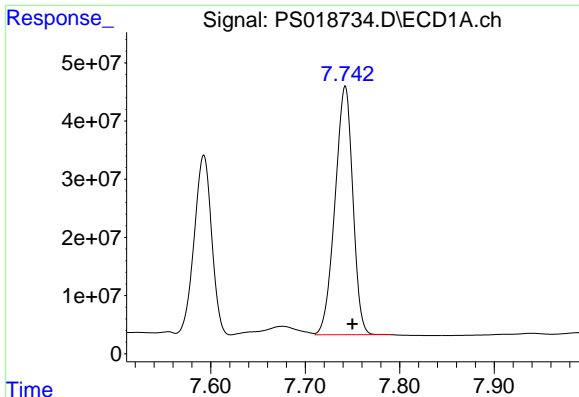
#6 MCP

R.T.: 7.593 min
 Delta R.T.: -0.008 min
 Response: 391945170
 Conc: 46.17 ug/ml



#6 MCP

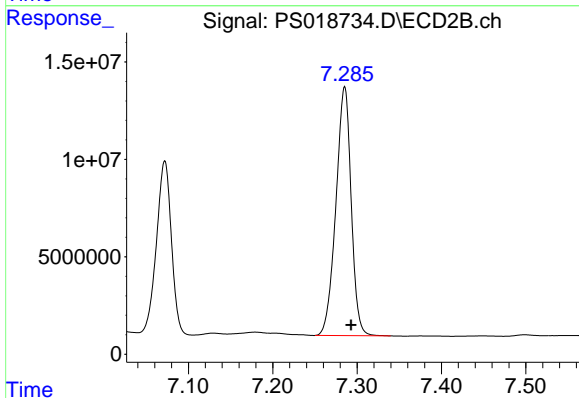
R.T.: 7.072 min
 Delta R.T.: -0.007 min
 Response: 111221206
 Conc: 45.43 ug/ml



#7 MCPA

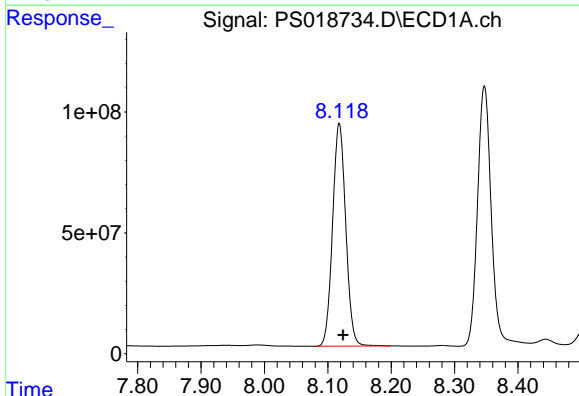
R.T.: 7.742 min
 Delta R.T.: -0.008 min
 Response: 558813926
 Conc: 46.21 ug/ml

Instrument :
 ECD_S
 ClientSampleId :



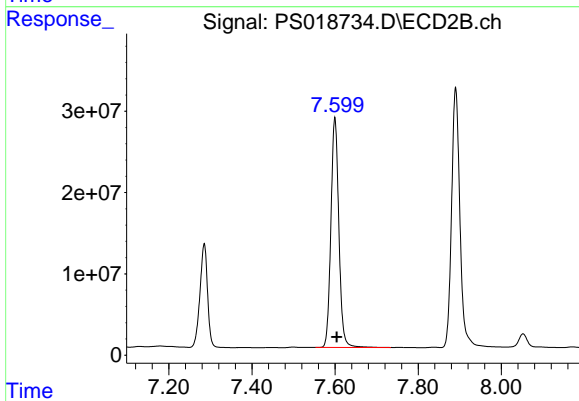
#7 MCPA

R.T.: 7.285 min
 Delta R.T.: -0.008 min
 Response: 160682906
 Conc: 46.01 ug/ml



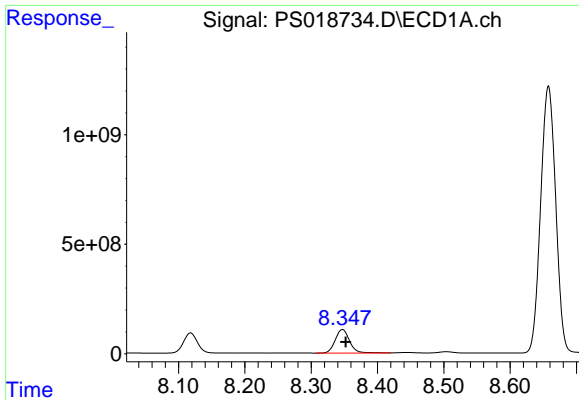
#8 DICHLORPROP

R.T.: 8.118 min
 Delta R.T.: -0.006 min
 Response: 1329309149
 Conc: 482.61 ng/ml



#8 DICHLORPROP

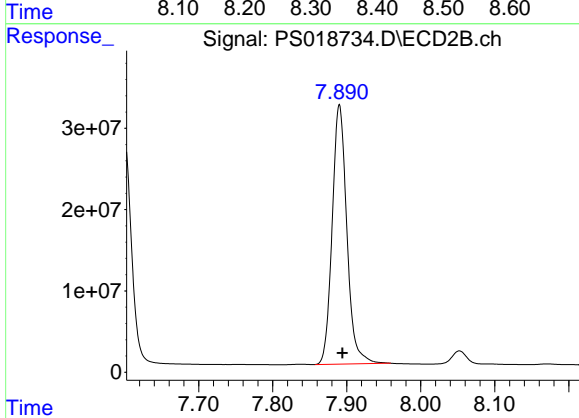
R.T.: 7.600 min
 Delta R.T.: -0.004 min
 Response: 374607981
 Conc: 473.22 ng/ml



#9 2,4-D

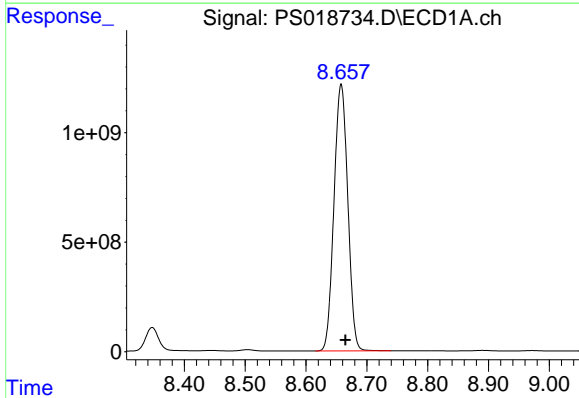
R.T.: 8.347 min
Delta R.T.: -0.005 min
Response: 1621650821
Conc: 483.98 ng/ml

Instrument :
ECD_S
ClientSampleId :



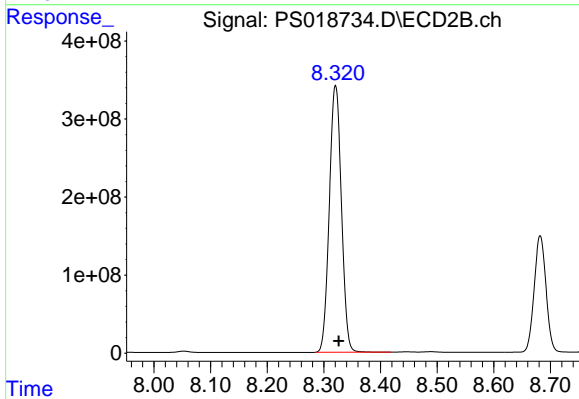
#9 2,4-D

R.T.: 7.890 min
Delta R.T.: -0.004 min
Response: 439317422
Conc: 469.35 ng/ml



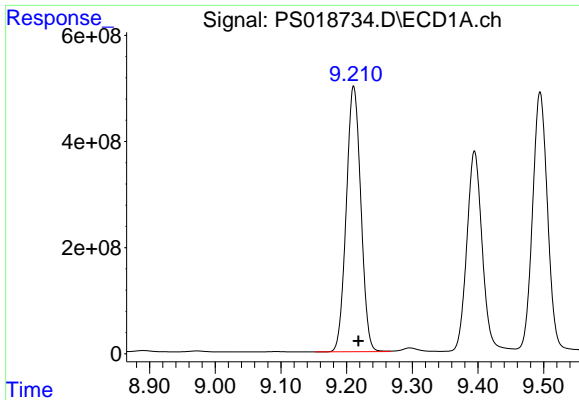
#10 Pentachlorophenol

R.T.: 8.658 min
Delta R.T.: -0.007 min
Response: 19182189794
Conc: 529.86 ng/ml



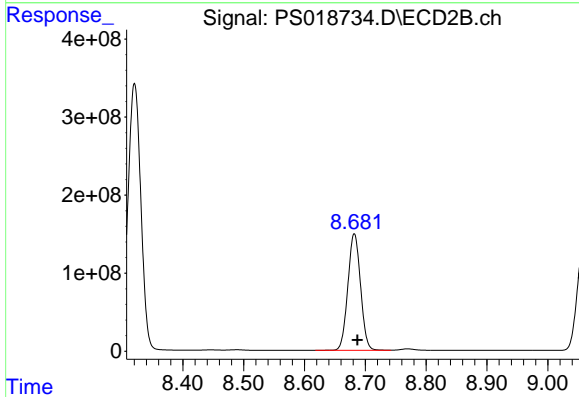
#10 Pentachlorophenol

R.T.: 8.321 min
Delta R.T.: -0.005 min
Response: 5064244627
Conc: 515.69 ng/ml

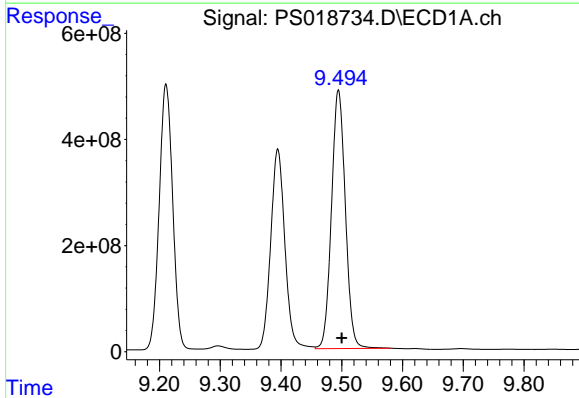


#11 2,4,5-TP (SILVEX)
 R.T.: 9.211 min
 Delta R.T.: -0.007 min
 Response: 7712462377
 Conc: 507.13 ng/ml

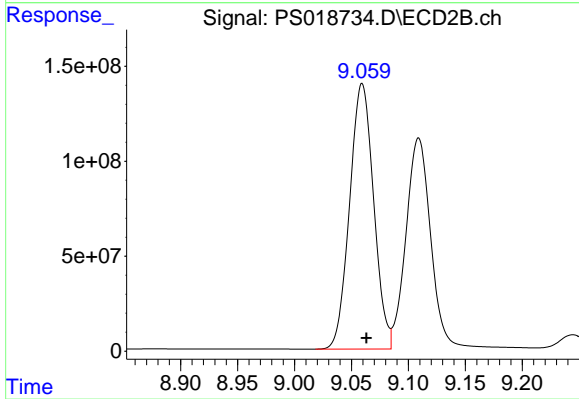
Instrument :
 ECD_S
 ClientSampleId :



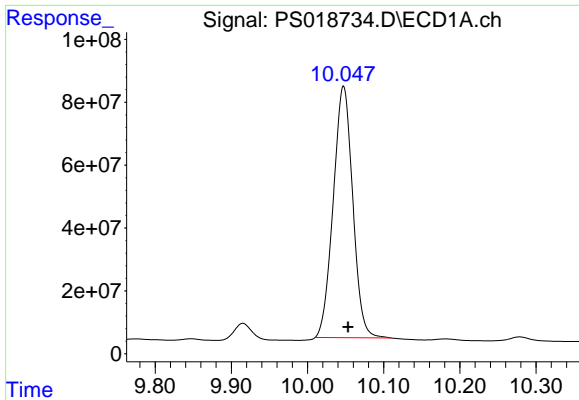
#11 2,4,5-TP (SILVEX)
 R.T.: 8.682 min
 Delta R.T.: -0.005 min
 Response: 2172884486
 Conc: 498.14 ng/ml



#12 2,4,5-T
 R.T.: 9.495 min
 Delta R.T.: -0.005 min
 Response: 7716553720
 Conc: 516.55 ng/ml



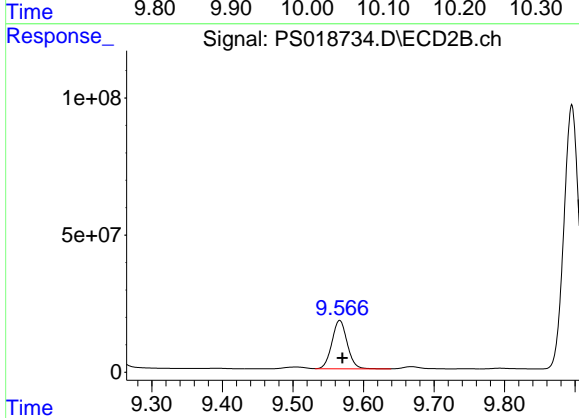
#12 2,4,5-T
 R.T.: 9.059 min
 Delta R.T.: -0.004 min
 Response: 2053321375
 Conc: 495.71 ng/ml



#13 2,4-DB

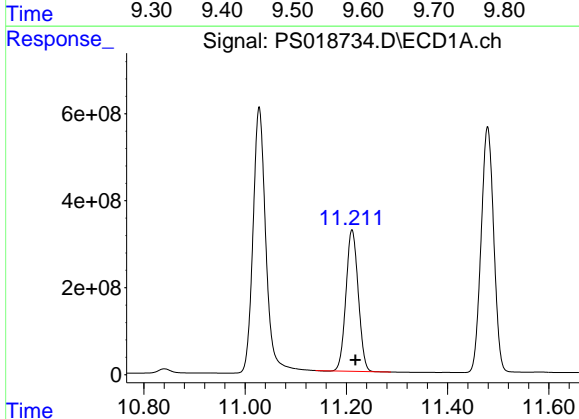
R.T.: 10.047 min
 Delta R.T.: -0.006 min
 Response: 1422554089
 Conc: 520.05 ng/ml

Instrument :
 ECD_S
 ClientSampleId :



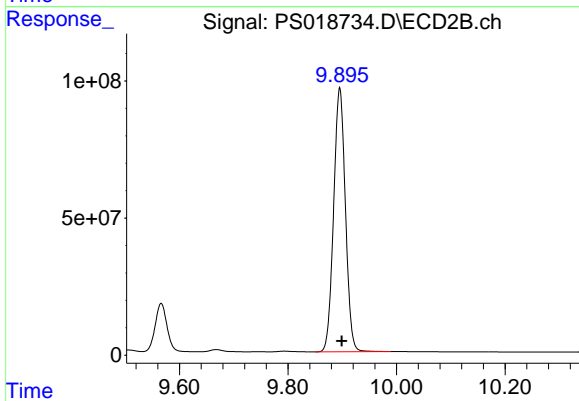
#13 2,4-DB

R.T.: 9.566 min
 Delta R.T.: -0.004 min
 Response: 267198622
 Conc: 470.63 ng/ml



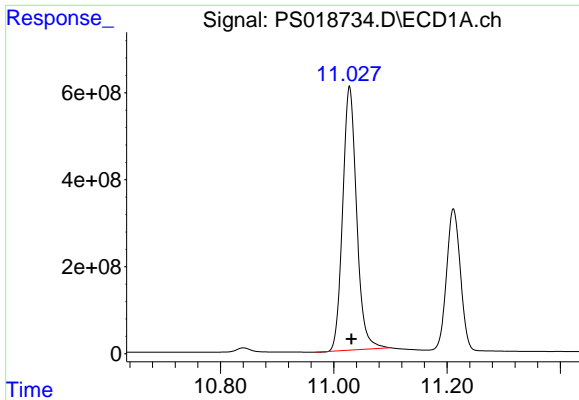
#14 DINOSEB

R.T.: 11.211 min
 Delta R.T.: -0.007 min
 Response: 5467995096
 Conc: 511.36 ng/ml



#14 DINOSEB

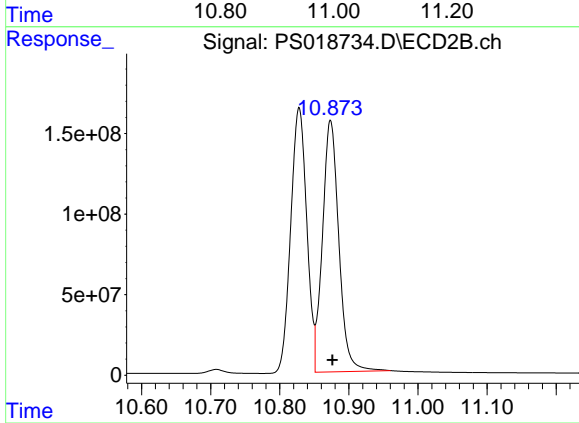
R.T.: 9.895 min
 Delta R.T.: -0.004 min
 Response: 1448992162
 Conc: 472.93 ng/ml



#15 Picloram

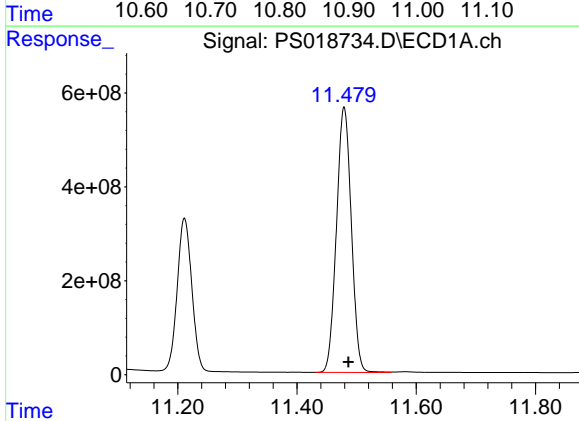
R.T.: 11.028 min
 Delta R.T.: -0.003 min
 Response: 10360656241
 Conc: 504.03 ng/ml

Instrument :
 ECD_S
 ClientSampleId :



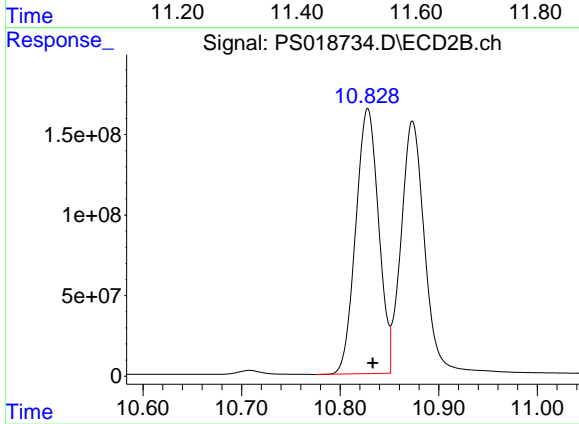
#15 Picloram

R.T.: 10.873 min
 Delta R.T.: -0.003 min
 Response: 2569764087
 Conc: 483.39 ng/ml



#16 DCPA

R.T.: 11.479 min
 Delta R.T.: -0.007 min
 Response: 9775898355
 Conc: 546.42 ng/ml



#16 DCPA

R.T.: 10.828 min
 Delta R.T.: -0.005 min
 Response: 2647206582
 Conc: 503.34 ng/ml