

Data Path : Z:\pestpcbsrv\HPCHEM1\ECD_S\Data\PS032422\
 Data File : PS018748.D
 Signal(s) : Signal #1: ECD1A.ch Signal #2: ECD2B.ch
 Acq On : 24 Mar 2022 19:25
 Operator : AJ\MA
 Sample : N2031-14
 Misc :
 ALS Vial : 17 Sample Multiplier: 1

Instrument :
 ECD_S
 ClientSampleId :

Integration File signal 1: autoint1.e
 Integration File signal 2: autoint2.e
 Quant Time: Mar 25 01:23:28 2022
 Quant Method : Z:\pestpcbsrv\HPCHEM1\ECD_S\Method\PS031422.M
 Quant Title : 8080.M
 QLast Update : Mon Mar 14 11:41:05 2022
 Response via : Initial Calibration
 Integrator: ChemStation

Volume Inj. : 2 µl
 Signal #1 Phase : Rtx-CLPesticides Signal #2 Phase: Rtx-CLPesticides2
 Signal #1 Info : 30M x 0.32mm x0.5 Signal #2 Info : 30M x 0.32mm x 0.25µm

Compound	RT#1	RT#2	Resp#1	Resp#2	ng/ml	ng/ml

System Monitoring Compounds						
4) S 2,4-DCAA	7.227	6.809	994.9E6	239.8E6	349.572	340.850
Target Compounds						
1) T Dalapon	2.978f	0.000	182.7E6	0	46.987	N.D. #
2) T 3,5-DICHL...	6.473	6.008	15289897	49490815	3.968	47.309 #
3) T 4-Nitroph...	7.065	6.389	26114780	3524004	15.156	8.674 #
5) T DICAMBA	7.430	6.967	19965381	10345308	1.831	3.473 #
6) T MCPP	7.592	7.080	65086633	2344097	7.668	<MDL #
7) T MCPA	7.730	7.274	41595568	11098472	3.439	3.178
8) T DICHLORPROP	8.131	7.617	6108197	28615961	2.218	36.149 #
9) T 2,4-D	8.329	7.877	38176079	31734518	11.394	33.904 #
10) T Pentachlo...	8.690	8.324	116.3E6	887801	3.212	<MDL #
11) T 2,4,5-TP ...	9.204	8.715	10496617	20748198	<MDL	4.757 #
12) T 2,4,5-T	9.516	9.063	1946603	10616367	<MDL	2.563 #
13) T 2,4-DB	10.039	9.577	16742133	33319903	6.121	58.688 #
15) T Picloram	11.000	10.887	70302098	42762648	3.420	8.044 #
16) T DCPA	11.498	10.828	-38261163	18700274	N.D.	3.556

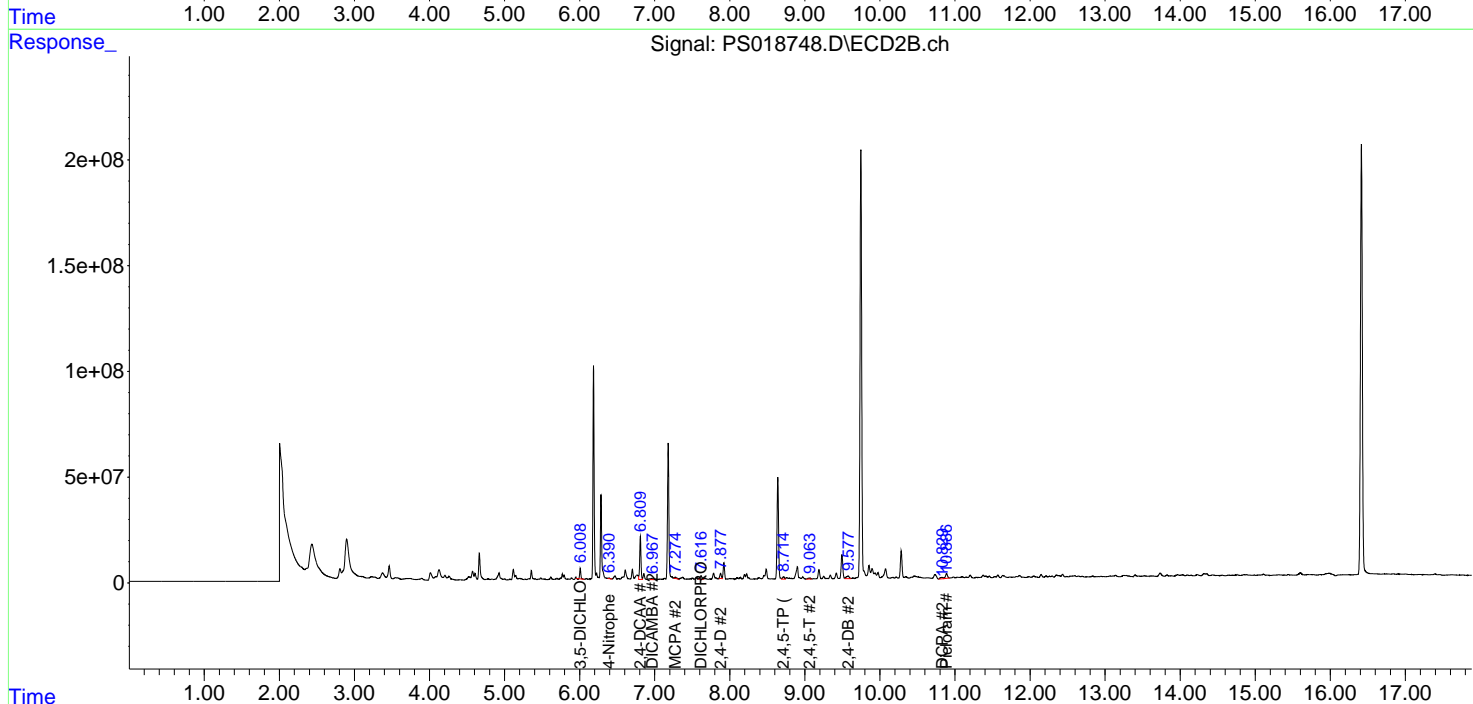
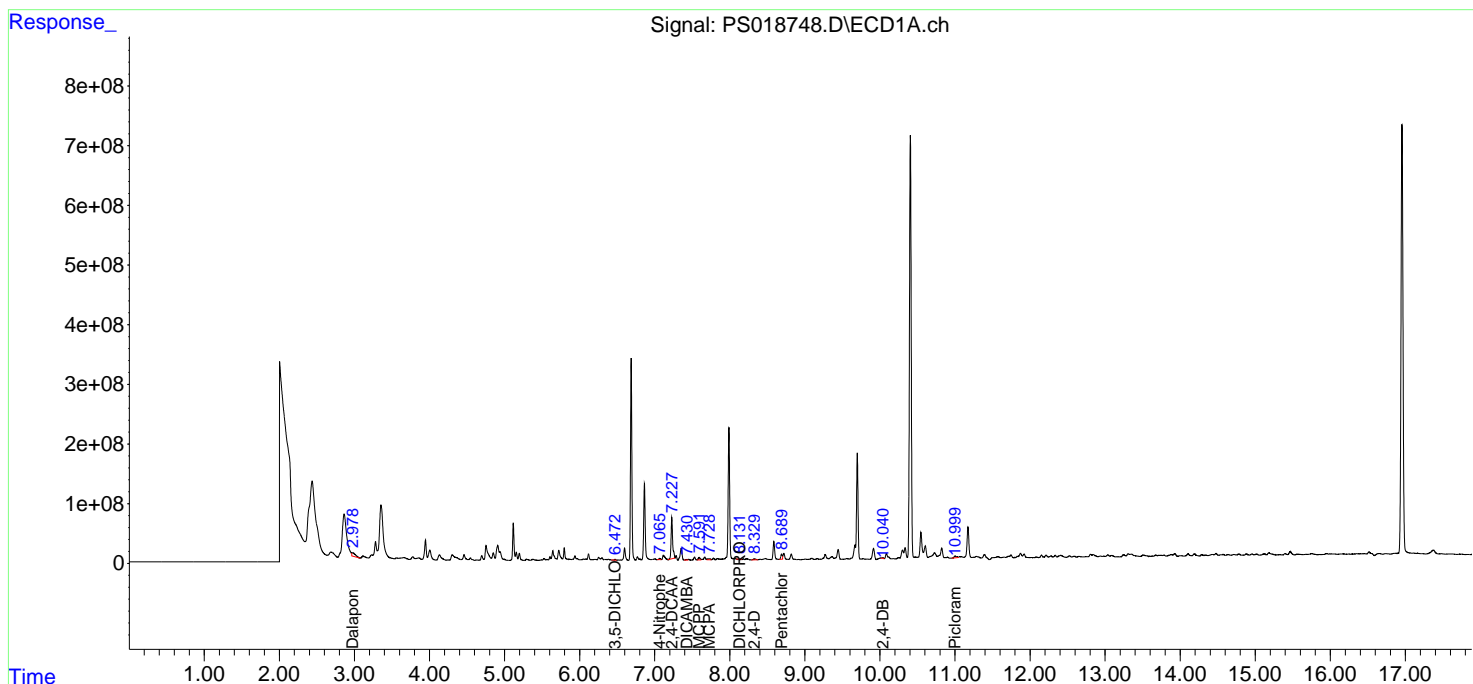
(f)=RT Delta > 1/2 Window (#)=Amounts differ by > 25% (m)=manual int.

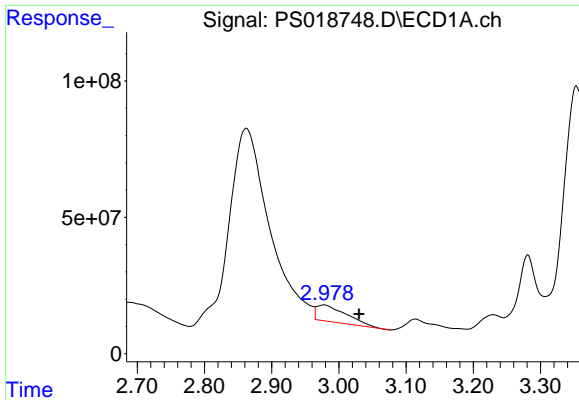
Data Path : Z:\pestpcbsrv\HPCHEM1\ECD_S\Data\PS032422\
 Data File : PS018748.D
 Signal(s) : Signal #1: ECD1A.ch Signal #2: ECD2B.ch
 Acq On : 24 Mar 2022 19:25
 Operator : AJ\MA
 Sample : N2031-14
 Misc :
 ALS Vial : 17 Sample Multiplier: 1

Instrument :
 ECD_S
 ClientSampleId :

Integration File signal 1: autoint1.e
 Integration File signal 2: autoint2.e
 Quant Time: Mar 25 01:23:28 2022
 Quant Method : Z:\pestpcbsrv\HPCHEM1\ECD_S\Method\PS031422.M
 Quant Title : 8080.M
 QLast Update : Mon Mar 14 11:41:05 2022
 Response via : Initial Calibration
 Integrator: ChemStation

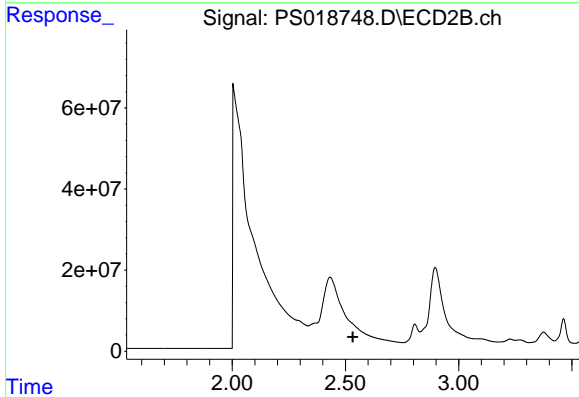
Volume Inj. : 2 µl
 Signal #1 Phase : Rtx-CLPesticides Signal #2 Phase: Rtx-CLPesticides2
 Signal #1 Info : 30M x 0.32mm x0.5 Signal #2 Info : 30M x 0.32mm x 0.25µm



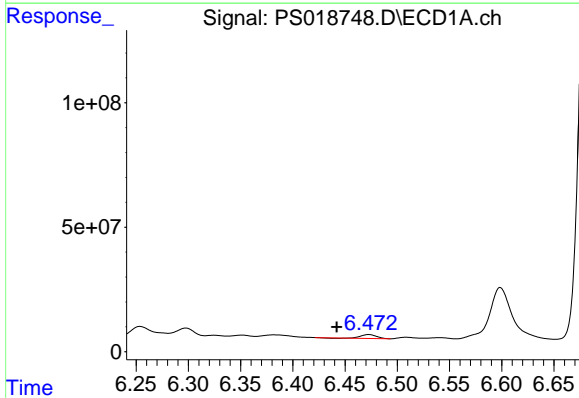


#1 Dalapon
 R.T.: 2.978 min
 Delta R.T.: -0.052 min
 Response: 182708937
 Conc: 46.99 ng/ml

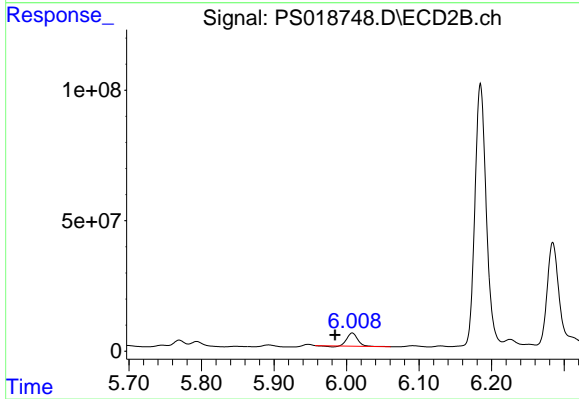
Instrument :
 ECD_S
 ClientSampleId :



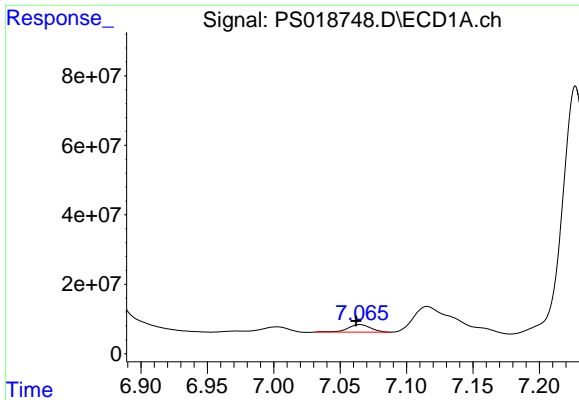
#1 Dalapon
 R.T.: 0.000 min
 Exp R.T. : 2.533 min
 Response: 0
 Conc: N.D.



#2 3,5-DICHLOROBENZOIC ACID
 R.T.: 6.473 min
 Delta R.T.: 0.031 min
 Response: 15289897
 Conc: 3.97 ng/ml



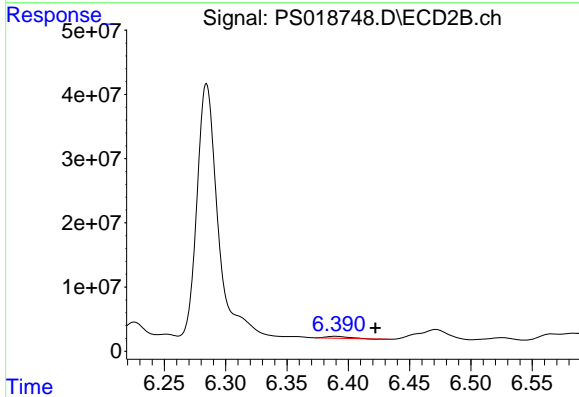
#2 3,5-DICHLOROBENZOIC ACID
 R.T.: 6.008 min
 Delta R.T.: 0.024 min
 Response: 49490815
 Conc: 47.31 ng/ml



#3 4-Nitrophenol

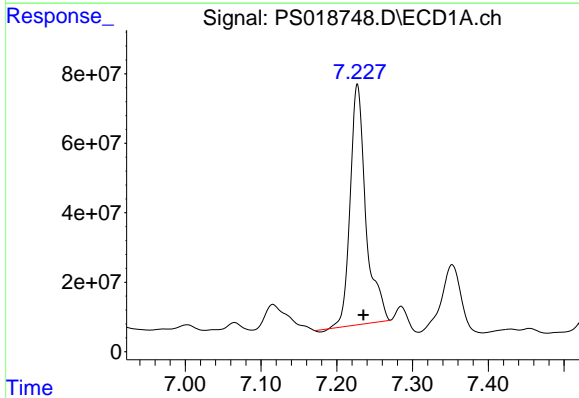
R.T.: 7.065 min
 Delta R.T.: 0.003 min
 Response: 26114780
 Conc: 15.16 ng/ml

Instrument :
 ECD_S
 ClientSampleId :



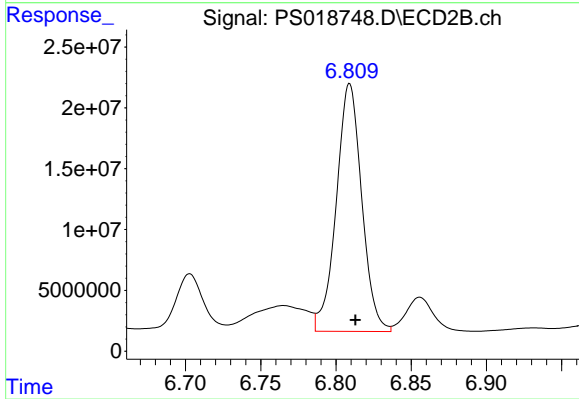
#3 4-Nitrophenol

R.T.: 6.389 min
 Delta R.T.: -0.033 min
 Response: 3524004
 Conc: 8.67 ng/ml



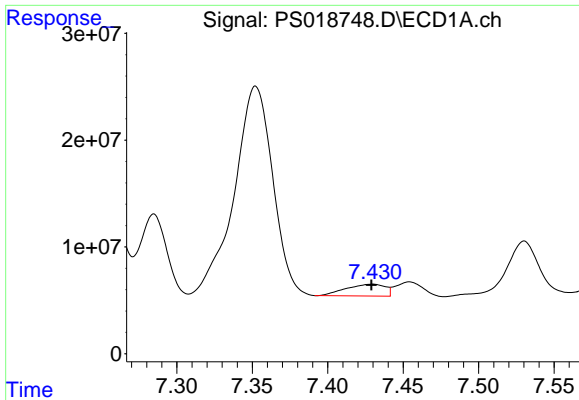
#4 2,4-DCAA

R.T.: 7.227 min
 Delta R.T.: -0.008 min
 Response: 994851447
 Conc: 349.57 ng/ml



#4 2,4-DCAA

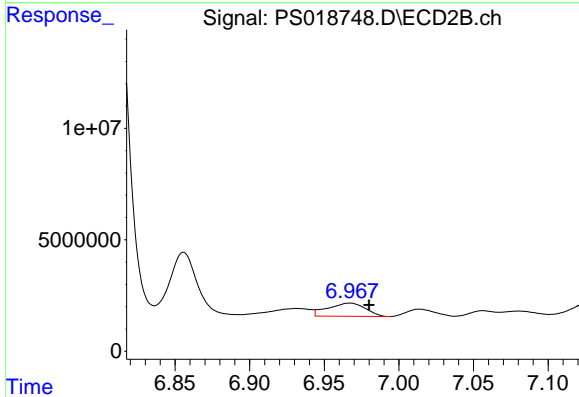
R.T.: 6.809 min
 Delta R.T.: -0.004 min
 Response: 239840964
 Conc: 340.85 ng/ml



#5 DICAMBA

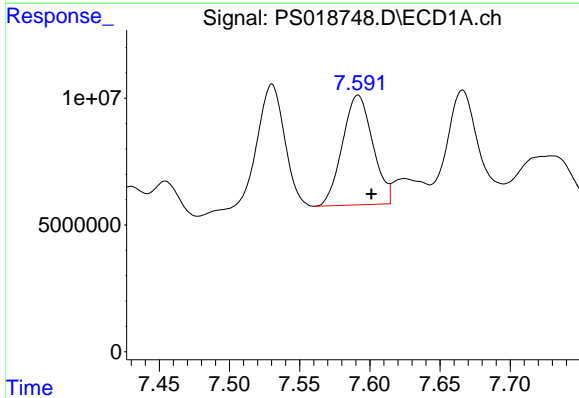
R.T.: 7.430 min
 Delta R.T.: 0.000 min
 Response: 19965381
 Conc: 1.83 ng/ml

Instrument :
 ECD_S
 ClientSampleId :



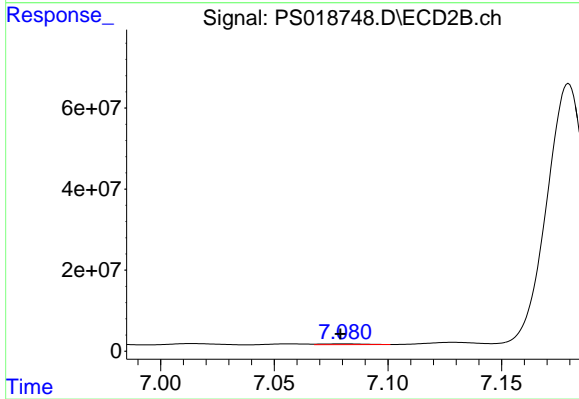
#5 DICAMBA

R.T.: 6.967 min
 Delta R.T.: -0.013 min
 Response: 10345308
 Conc: 3.47 ng/ml



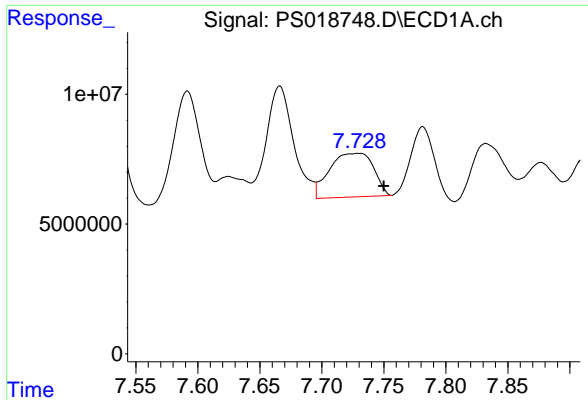
#6 MCPP

R.T.: 7.592 min
 Delta R.T.: -0.009 min
 Response: 65086633
 Conc: 7.67 ug/ml



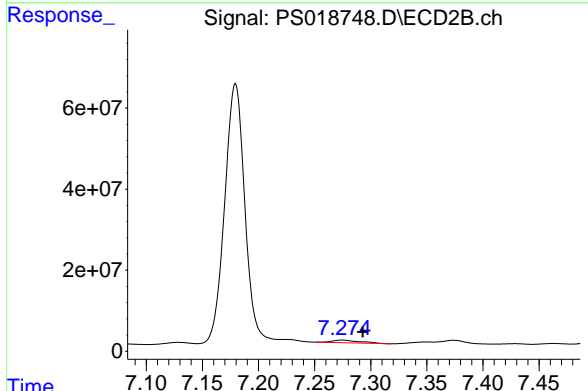
#6 MCPP

R.T.: 7.080 min
 Delta R.T.: 0.001 min
 Response: 2344097
 Conc: N.D.

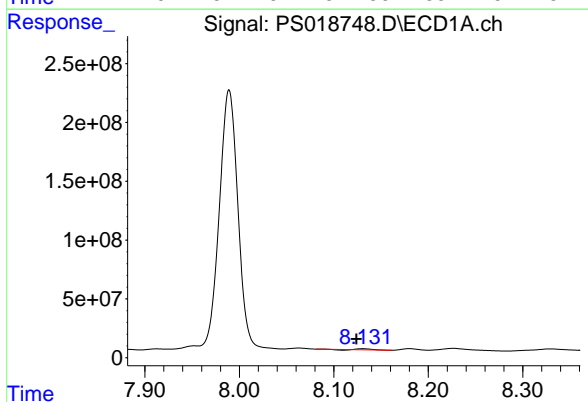


#7 MCPA
 R.T.: 7.730 min
 Delta R.T.: -0.020 min
 Response: 41595568
 Conc: 3.44 ug/ml

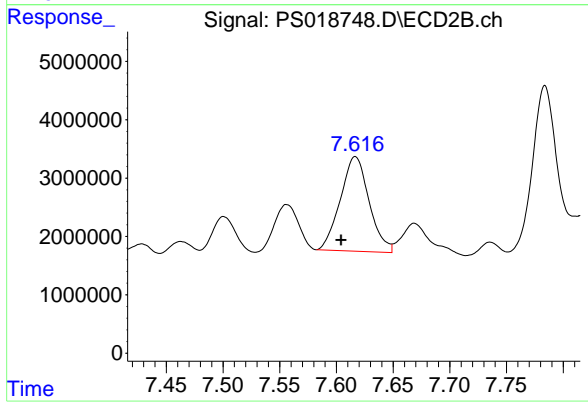
Instrument :
 ECD_S
 ClientSampleId :



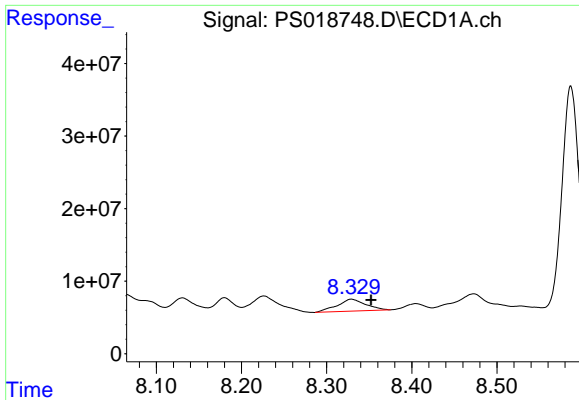
#7 MCPA
 R.T.: 7.274 min
 Delta R.T.: -0.019 min
 Response: 11098472
 Conc: 3.18 ug/ml



#8 DICHLORPROP
 R.T.: 8.131 min
 Delta R.T.: 0.007 min
 Response: 6108197
 Conc: 2.22 ng/ml



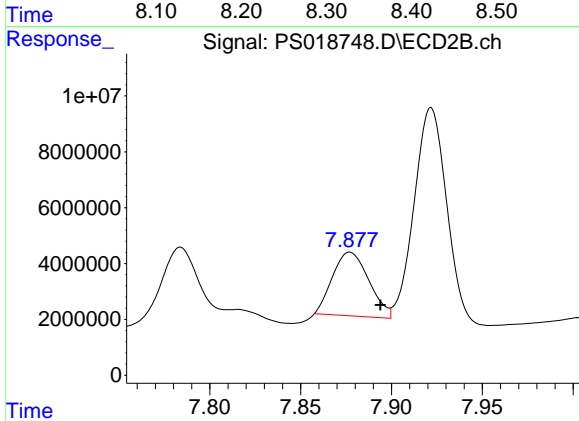
#8 DICHLORPROP
 R.T.: 7.617 min
 Delta R.T.: 0.013 min
 Response: 28615961
 Conc: 36.15 ng/ml



#9 2,4-D

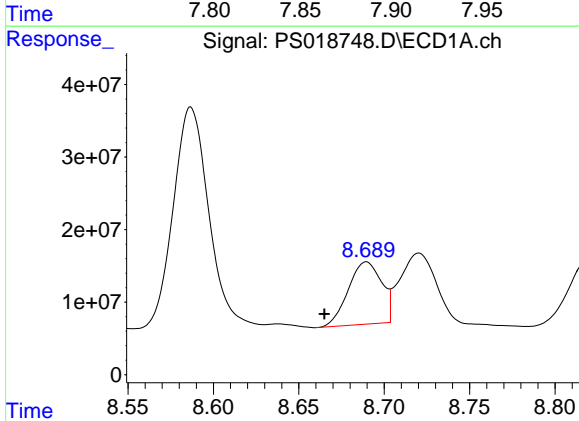
R.T.: 8.329 min
 Delta R.T.: -0.023 min
 Response: 38176079
 Conc: 11.39 ng/ml

Instrument :
 ECD_S
 ClientSampleId :



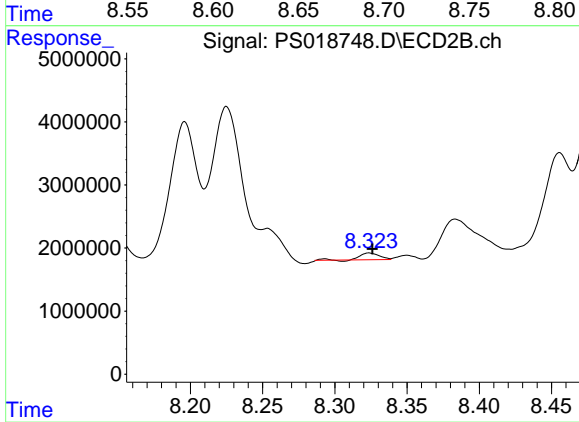
#9 2,4-D

R.T.: 7.877 min
 Delta R.T.: -0.017 min
 Response: 31734518
 Conc: 33.90 ng/ml



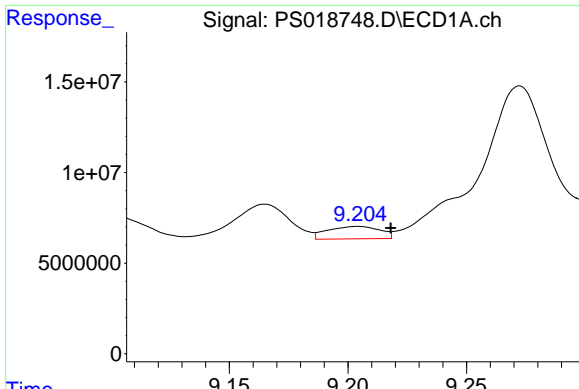
#10 Pentachlorophenol

R.T.: 8.690 min
 Delta R.T.: 0.025 min
 Response: 116276522
 Conc: 3.21 ng/ml



#10 Pentachlorophenol

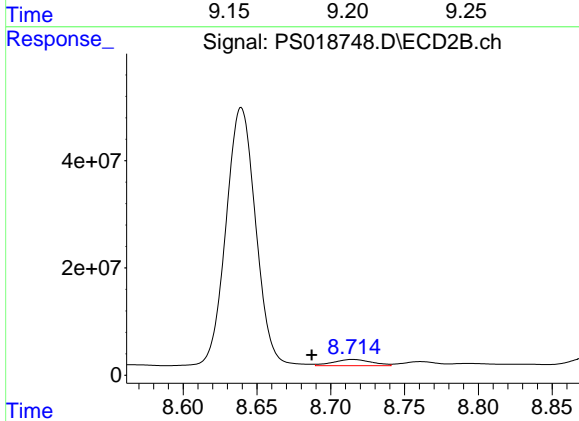
R.T.: 8.324 min
 Delta R.T.: -0.002 min
 Response: 887801
 Conc: N.D.



#11 2,4,5-TP (SILVEX)

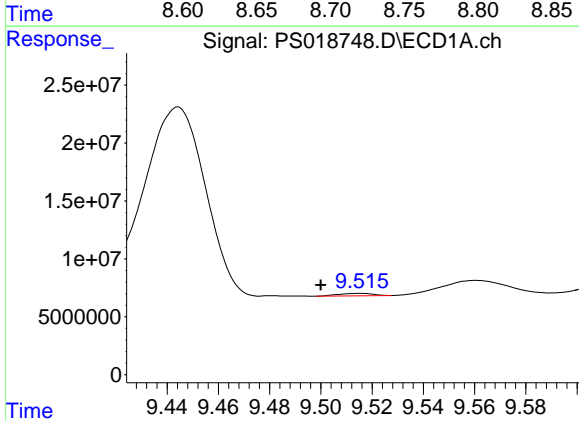
R.T.: 9.204 min
 Delta R.T.: -0.014 min
 Response: 10496617
 Conc: N.D.

Instrument :
 ECD_S
 ClientSampleId :



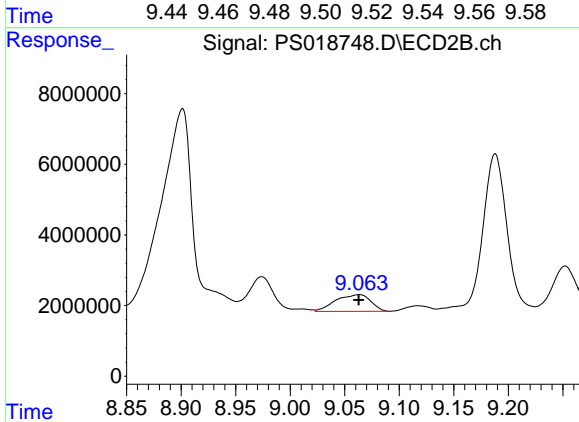
#11 2,4,5-TP (SILVEX)

R.T.: 8.715 min
 Delta R.T.: 0.028 min
 Response: 20748198
 Conc: 4.76 ng/ml



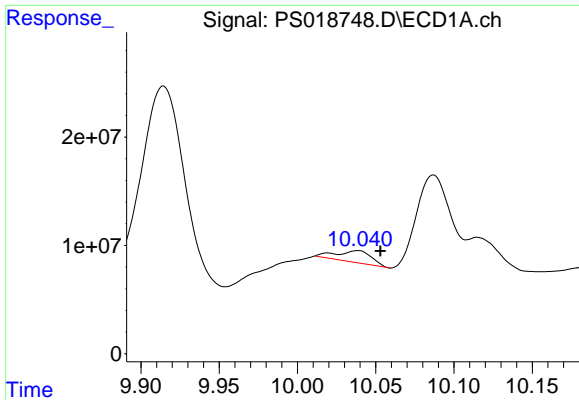
#12 2,4,5-T

R.T.: 9.516 min
 Delta R.T.: 0.016 min
 Response: 1946603
 Conc: N.D.



#12 2,4,5-T

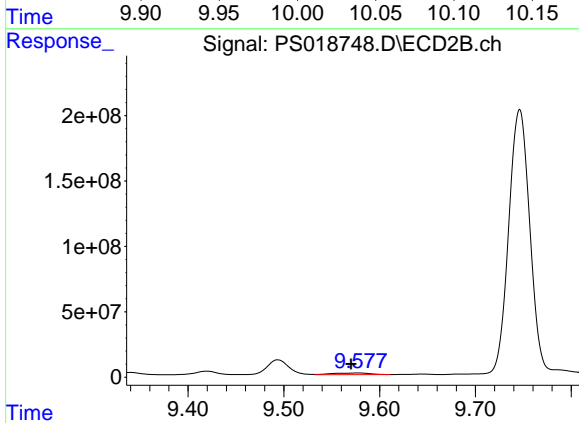
R.T.: 9.063 min
 Delta R.T.: 0.000 min
 Response: 10616367
 Conc: 2.56 ng/ml



#13 2,4-DB

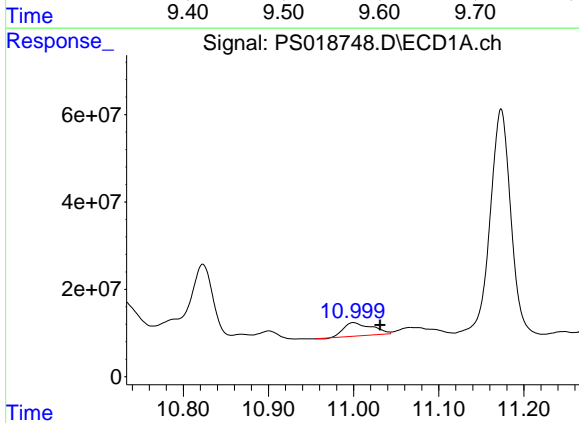
R.T.: 10.039 min
 Delta R.T.: -0.014 min
 Response: 16742133
 Conc: 6.12 ng/ml

Instrument :
 ECD_S
 ClientSampleId :



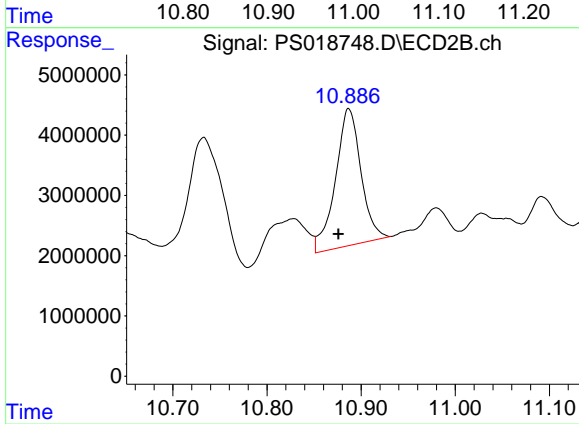
#13 2,4-DB

R.T.: 9.577 min
 Delta R.T.: 0.007 min
 Response: 33319903
 Conc: 58.69 ng/ml



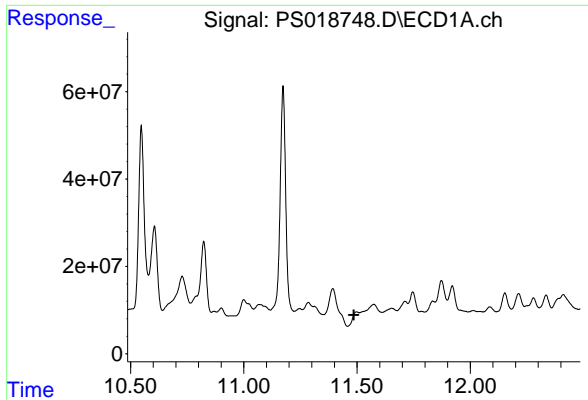
#15 Picloram

R.T.: 11.000 min
 Delta R.T.: -0.031 min
 Response: 70302098
 Conc: 3.42 ng/ml



#15 Picloram

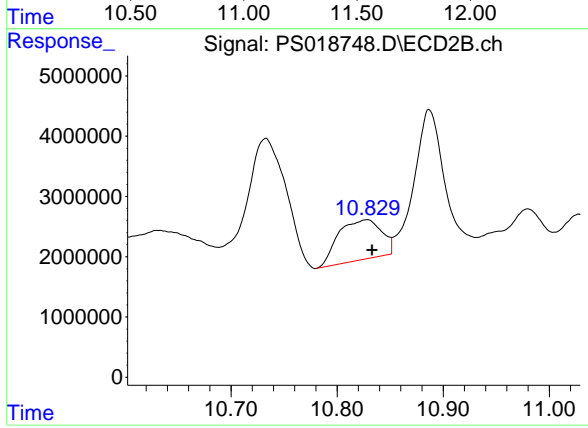
R.T.: 10.887 min
 Delta R.T.: 0.011 min
 Response: 42762648
 Conc: 8.04 ng/ml



#16 DCPA

R.T.: 11.498 min
 Delta R.T.: 0.012 min
 Response: -38261163
 Conc: N.D.

Instrument :
 ECD_S
 ClientSampleId :



#16 DCPA

R.T.: 10.828 min
 Delta R.T.: -0.005 min
 Response: 18700274
 Conc: 3.56 ng/ml